

What goes where?

APRIL 2018

Edmonton



Recycling

Include **ONLY** the items listed here in your recycling

Paper and Cardboard

- ✓ Newsprint and household paper (not shredded)
- ✓ Magazines and catalogues
- ✓ Non-foil gift wrap
- ✓ Paper egg cartons
- ✓ Paperback books
- ✓ Cardboard boxes (flatten and remove packaging)
- ✓ Pizza boxes (remove liner)



Plastic

- ✓ Household bottles and containers (e.g. vinegar, shampoo, detergent, margarine, yogurt, clamshells) - please rinse, labels OK
- ✓ Plastic bags (e.g. grocery, retail, bread, dry cleaning) - stuff into one bag and tie closed

Metal

- ✓ Metal food cans (labels OK)
- ✓ Aluminum trays (e.g. pie plate)
- ✓ Empty non-hazardous aerosol cans



Glass

- ✓ Glass jars and bottles only

Beverage Containers

- ✓ Milk containers, juice boxes, beverage bottles, soda cans



Remember!

Remove caps and lids and place them loosely in your recycling.



Eco Stations

Free Drop Off

Household Hazardous Waste

- ✓ Automotive oil, fluids and filters
- ✓ Batteries (all types)
- ✓ Corrosive and poisonous cleaners
- ✓ Light bulbs (all types) and fluorescent tubes
- ✓ Glues and adhesives
- ✓ Herbicides, pesticides and fertilizers
- ✓ Paints, stains and varnishes
- ✓ Pressurized containers (e.g. propane tanks, fire extinguishers)
- ✓ Syringes (put in a thick plastic container with screw-top lid, like a laundry detergent bottle)



Electronics and Appliances

- ✓ Anything with a battery or a cord (e.g. computers, TVs, toasters, stoves)
- ✓ VHS tapes



Scrap Metal

- ✓ BBQs, lawnmowers, automotive parts, etc.

Tires

- ✓ Passenger vehicle, motorcycle and ATV tires



Fees Apply

Bulky Items

- ✓ Mattresses, furniture
- ✓ Appliances needing CFC removal (e.g. fridges)

Loose or Mixed Waste

- ✓ Construction scrap
- ✓ Soil, gravel, tree roots, stumps, etc.

Fees: Bulky items: \$8 - \$15 (size dependent). Appliances requiring CFC removal: \$15. Loose or mixed loads: \$28 - \$48+ (size dependent).



Garbage

These items do not belong in your blue bag or blue bin

Food Waste

- ✓ Table scraps, peelings, spoiled food, etc.
- ✓ Cooking oil (up to 1L in a sealed, labelled container. Set beside garbage.)



Non-Recyclable Plastic

- ✓ CDs
- ✓ Chip bags and candy wrappers
- ✓ Coffee pods and K-cups
- ✓ Food wrap
- ✓ Garden hoses
- ✓ Plastic plates and cutlery
- ✓ Plastic toys

Non-Recyclable Paper

- ✓ Shredded paper (or take to a recycling depot)
- ✓ Coffee/drink cups
- ✓ Foil gift wrap and tissue paper
- ✓ Paper towels
- ✓ Pet food bags



Styrofoam

- ✓ All types

Others

- ✓ Disposable diapers
- ✓ Shoes and worn-out clothing

Items requiring double bagging

- ✓ Ashes
- ✓ Pet feces/kitty litter
- ✓ Floor sweepings, sawdust and vacuum cleaner bags

Don't see your waste item here?

Find it on our NEW WasteWise app. Visit edmonton.ca/waste.



Live in a house?



Remember to set out your waste by **7 a.m.** on your collection day.

Setting out your waste properly keeps your collector safe:

Keep it light. If you have trouble lifting your bag or can to the curb, it's too heavy.

Use the right can. Smaller than 100 L with fixed handles and no wheels.

Package sharps. Put sharps like broken glass, nails and metal scraps in a labelled box.

Put recyclables in a blue bag.

Keep them clean - don't forget to rinse your containers!



Setting out your waste

Edmonton



Live in an apartment?

Put your recyclables in your apartment's blue bin. No blue bin? Use a Recycling Depot.

There are 21 Recycling Depots around Edmonton. Find one at edmonton.ca/recyclingdepots.

Eco Stations

Eco Stations are convenient drop-off facilities for household hazardous waste, electronics, appliances and other items that don't belong in your household garbage. There are four locations in Edmonton:

Central Strathcona 5150-99 St
NE Kennedale 5355-127 Ave
NW Coronation 11440-143 St
SW Ambleside 14710 Ellerslie Rd



Hours:

Summer (April - October):

9 a.m. - 6:30 p.m., Monday - Saturday

Winter (November - March):

9 a.m. - 4:30 p.m., Tuesday - Saturday

Closed Holidays

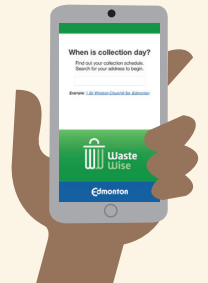
For more information, visit edmonton.ca/ecostations.



The Reuse Centre accepts a variety of everyday items and makes them available to residents and organizations for reuse. It is unique in that it deals with items not accepted for reuse elsewhere, such as arts and craft supplies, office and school supplies, paper and plastic products and more. For hours, fees and accepted items, visit edmonton.ca/reusecentre.

WasteWise tool

This free tool helps you sort your garbage, recycling and Eco Station items. You can also find your collection day, sign up for collection day reminders and play a fun waste sorting game. Download it as an app or use it online at edmonton.ca/waste.



Big Bin events

Big Bin Events accept bulky items & mixed waste at no cost. Twelve events are held May-September. See edmonton.ca/bigbinevents for dates and locations.



Have questions? Contact us.

Phone 311, email wasteman@edmonton.ca or visit edmonton.ca/waste.

100% post-consumer waste