



# 2009 – 2015 Artificial Turf Plan

Approved by  
Community Services Committee  
November 2008



## Purpose of the 2009 – 2015 Artificial Turf Plan

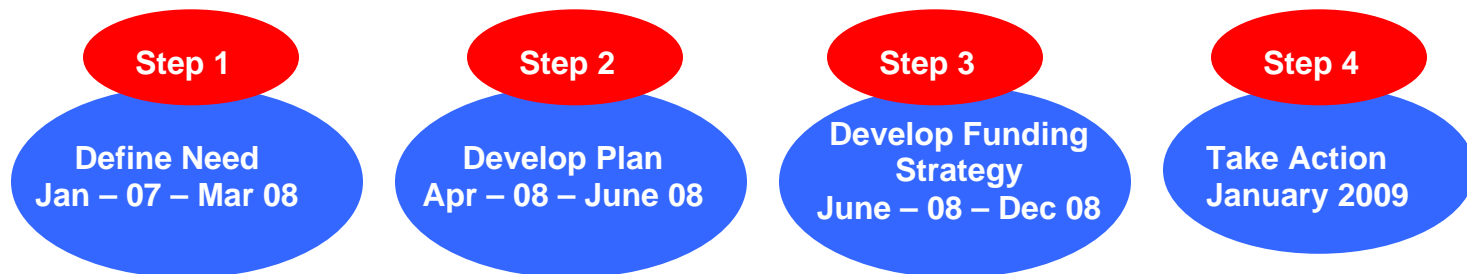
The City of Edmonton's Artificial Turf Plan (2009 – 2015) is intended to assist the City in identifying the short and mid-term rectangular artificial turf field locations and field design preference (Multi-field (2) & Single field sites ) recommendations.

As a planning tool, this also presents the City with the opportunity to work within a strategic and comprehensive framework to ensure capital priorities are appropriately identified and that this is a long-term investment in facility effectiveness.

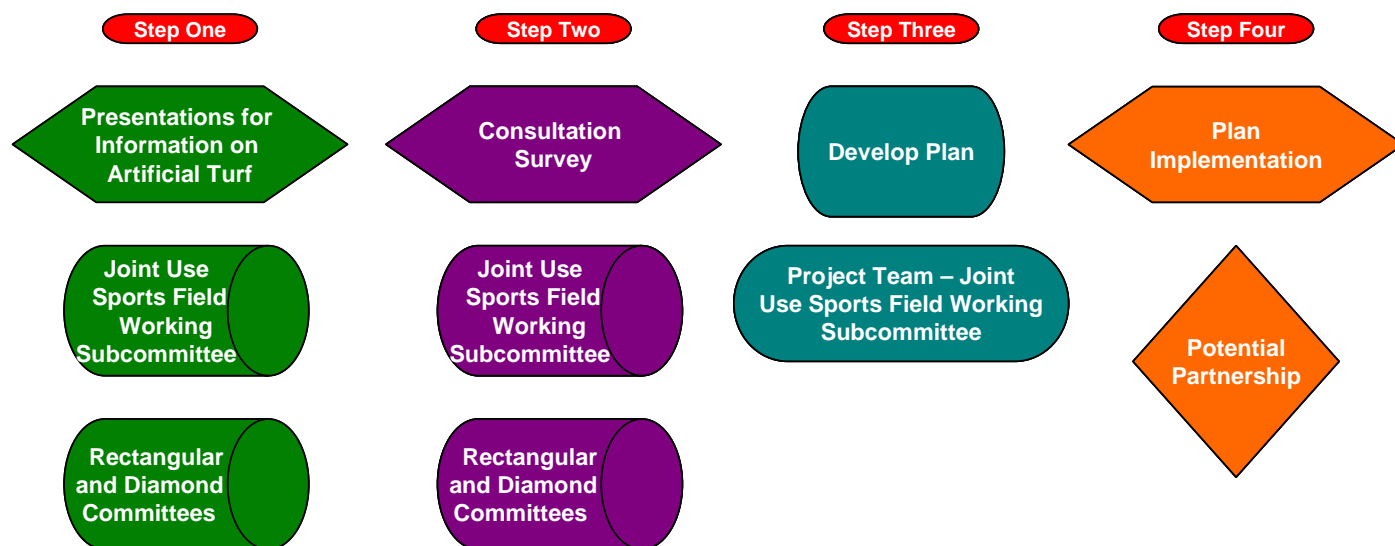
The Plan will deliver:

- Location recommendations and priorities for development/redevelopment.
- Number of sites to be developed
- Multi-field (2) & single field design preference recommendations

## Developing the Strategy



## Community Consultation Process



## Principles for Artificial Turf Development

The Artificial Turf Plan identifies the geographic locations, amenities and configurations for Artificial turf fields in Edmonton. The principles for Artificial Turf field Development are:

- **Flexible design:** Accommodate a wide range of sports and activities.
- **Allow for greater volume of field use:** Approximately 5-6 times more hours of use can be accommodated on artificial turf fields.
- **Extend the season use:** An additional 3 to 4 months per year of usage.
- **Make more efficient use of allocated land:** Land allotment for one artificial turf field equals approximate land allotment of 5-6 natural grass fields.
- **Reduced wear on existing grass fields:** Must play games can be played on artificial turf during inclement weather reducing damage to grass fields.

- **Greater flexibility of use for inclement weather:** Play can continue in most weather conditions on an artificial turf field.
- **Physical Linkages and Access:** Fair and equitable distribution across the entire City of Edmonton.
- **Integration of facilities:** Increase opportunities for integration of services and amenities.
- **A mix of Multi-field and Single fields:** A balance of multi-field designs that compliment single field sites within the central core of the City.

## Criteria for Identifying Artificial Turf Location and Priority

A wide range of criteria were used to determine development / redevelopment priorities and locations. Key considerations were:

- Geographic representation across the entire city
- Sport Organization preferences for development / redevelopment priorities
- Specific sites able to accommodate an Artificial Turf Field(s)
- Multi-fields or single field site design
- Parking availability
- Connection to High Schools for daytime utilization
- Partner Interest

Many other factors were considered including community support, funding, environmental considerations, proximity to other artificial turf field sites, staff location / availability, and transportation linkages.

## Draft Recommendations for Artificial Turf Plan

Considering community consultation surveys, research on recent successful design trends, short and long term site availability, site amenities and geographic representation across the City the following is recommended:

- The recommended time lines for development are:
  - 2009 - JP Bowl (single field)
  - 2010 - Mill Woods District Park (multi-field)
  - 2011 - Clareview District Park (multi-field)
  - 2013 - Leger District Park (multi-field)
  - 2015 – Multi-Sport Tournament and Recreation Site (Partner developed single field)
- All planned sites with the exception of JP Bowl will be designed as multi field sites.

This plan must be flexible enough to respond appropriately to emerging opportunities and changing demand and conditions. It is intended to provide a clear direction for identification of the City's short and long term artificial turf needs and emerging capital priorities.

This plan is for rectangular fields as the consultation process with diamond user groups indicated a low priority for diamond artificial turf fields beyond Telus Field.

# 2009 – 2015 Artificial Turf Plan

Inventory of Artificial Turf Fields	Central	North	West (Northwest)	Southwest	Southeast
Now – 3	Now - 2	Now - 0	Now - 1	Now - 0	Now - 0
Future Fields – up to 9	Future - 1	Future – 1/2	Future - 1	Future – 1/2	Future – 2/3
Total Fields – up to 12	Fields - 3	Fields – 1/2	Fields - 2	Fields – 1/2	Fields – 2/3

