



NEIGHBOURHOOD DESIGN

Streetlight Design

The Streetlight System is upgraded to energy efficient LED lighting



Edmonton



114 Avenue Shared Use Path (SUP) 106 Street to 102 Street

Comments received from the April 5, 2017 Spruce Avenue Neighbourhood Renewal open house included adding bicycle infrastructure to the neighbourhood.

The City hosted a workshop on bike infrastructure on January 16, 2018 and invited stakeholders and those adjacent to 114 Avenue to discuss bicycle infrastructure options.

A shared use path (SUP) will be implemented along the north side of 114 Avenue from 106 street to 102 Street.

A SUP is a 3 meter pathway that is separate from traffic and provides a space shared by pedestrians and bicycles.

The operations of the road remain unchanged and remain as 2-way traffic with parking on both sides.

Clearing of snow on the SUP from 114 Avenue from 106 Street to 102 Street becomes the responsibility of the City of Edmonton.

Potential connections further east of 102 Street can be considered in conjunction with bike infrastructure plans for the Alberta Avenue Neighbourhood.

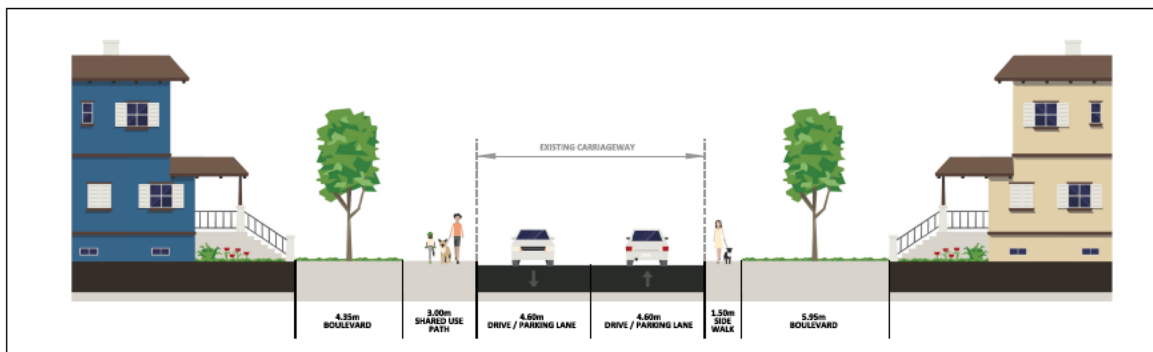




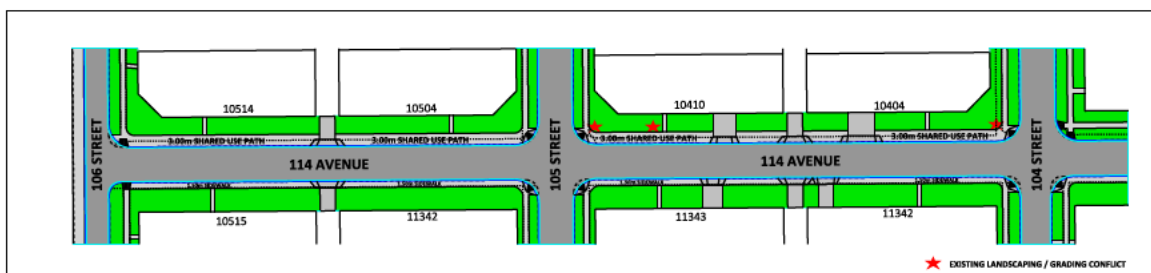
THE WAY AHEAD

BUILDING GREAT NEIGHBOURHOODS

SHARED USE PATH 114 AVENUE - FROM 106 STREET TO 104 STREET



CROSS SECTION - NOT TO SCALE



PLAN VIEW - SCALE: 1:500



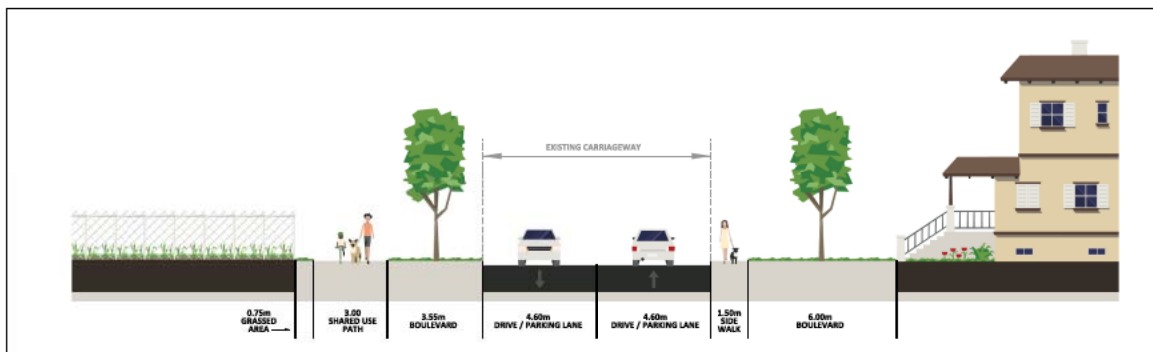
Edmonton



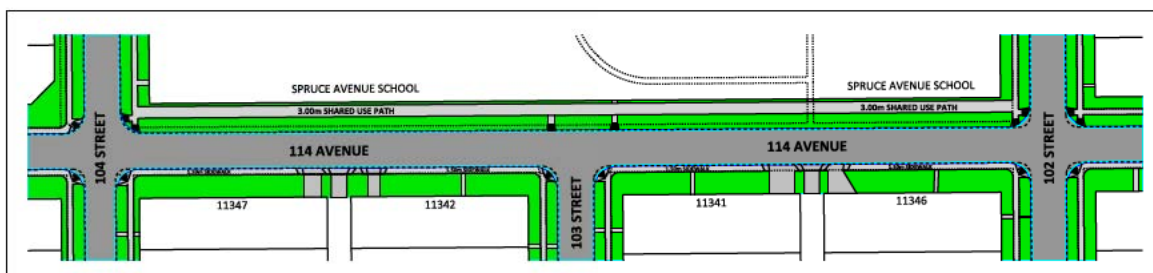
THE WAY AHEAD

BUILDING GREAT NEIGHBOURHOODS

SHARED USE PATH 114 AVENUE - FROM 104 STREET TO 102 STREET



CROSS SECTION - NOT TO SCALE



PLAN VIEW - SCALE: 1:500



Edmonton



106 Street Shared Use Path (SUP) 112 Avenue to Princess Elizabeth Avenue

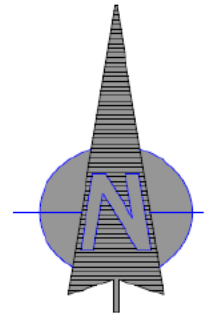
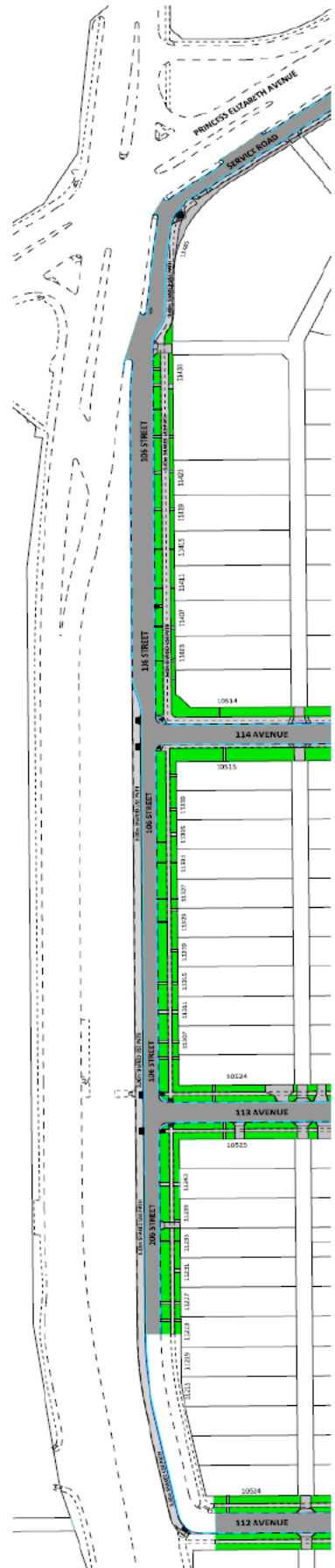
Comments received from the April 5, 2017 Spruce Avenue Neighbourhood Renewal open house included adding bicycle infrastructure to the neighbourhood.

Adding the north-south connection along 106 Street ensures connectivity with the existing shared use path, reduces conflicts/crossings due to the LRT, provides a connection from Spruce Avenue into the bicycle network and is a potential connection to NAIT.

The 3 meter shared use path (SUP) will be implemented:

- 1) From 112 Avenue to 114 Avenue on the west side of the 106 Street service road.
- 2) From 114 Avenue to Princess Elizabeth Avenue on the east side of the 106 Street service road, replacing the existing 1.5m boulevard sidewalk.

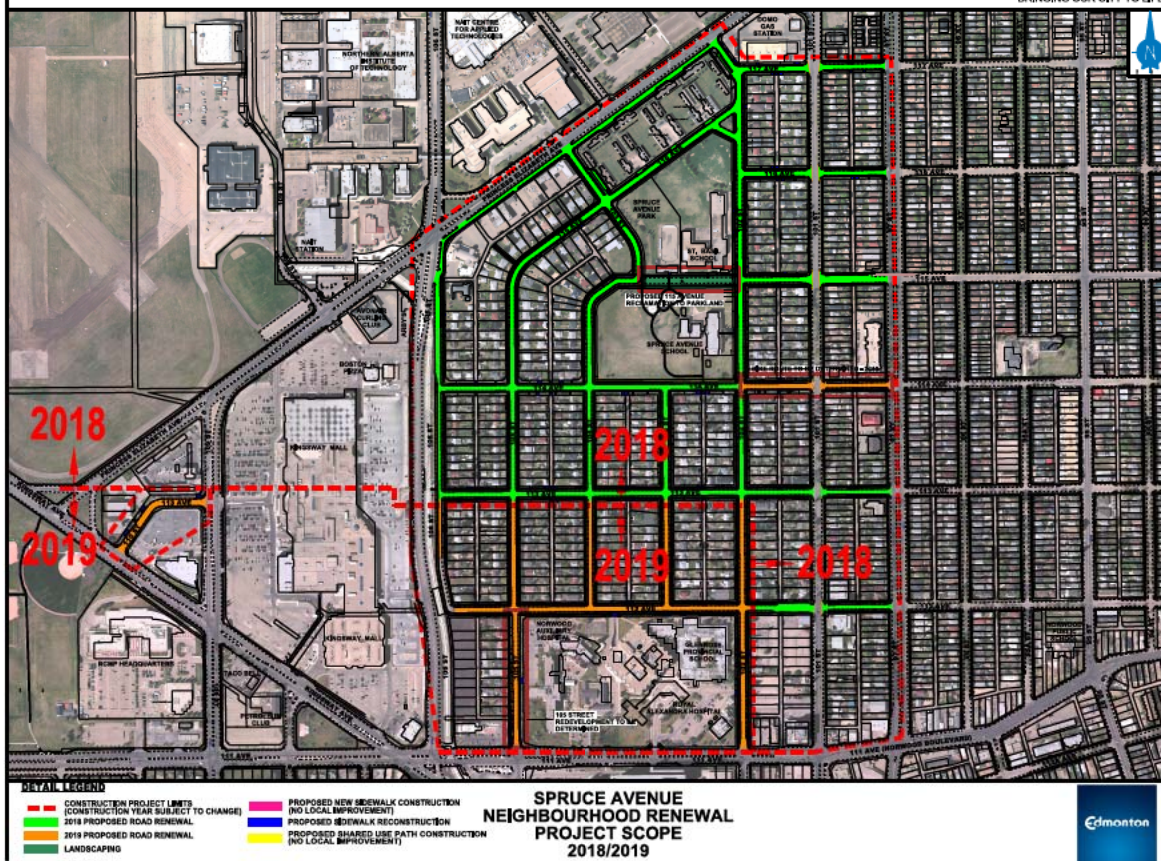
Clearing of snow from the SUP on 106 Street from 112 Avenue to Princess Elizabeth Avenue becomes the responsibility of the City of Edmonton.



THE WAY AHEAD

**BUILDING GREAT
NEIGHBOURHOODS**

TRANSFORMING | EDMONTON
BRINGING OUR CITY TO LIFE

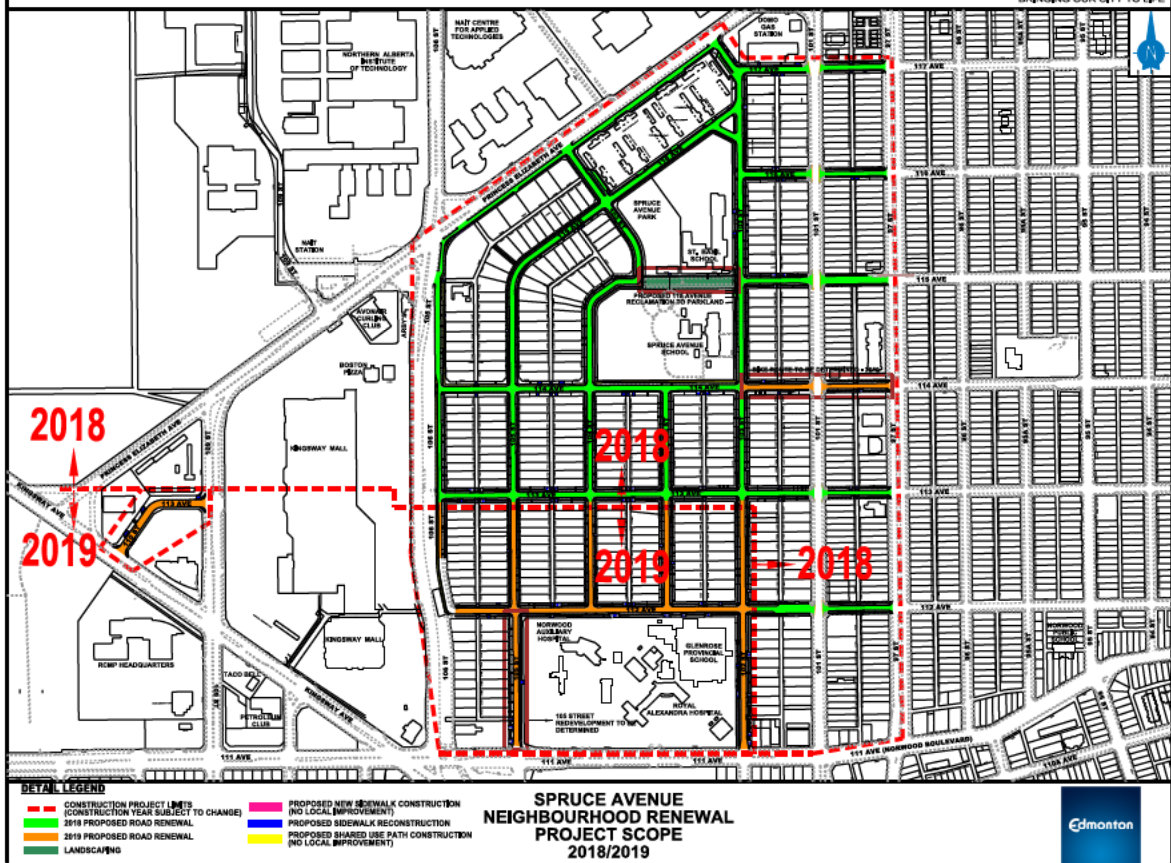




THE WAY AHEAD

BUILDING GREAT NEIGHBOURHOODS

TRANSFORMING **EDMONTON**
BRINGING OUR CITY TO LIFE

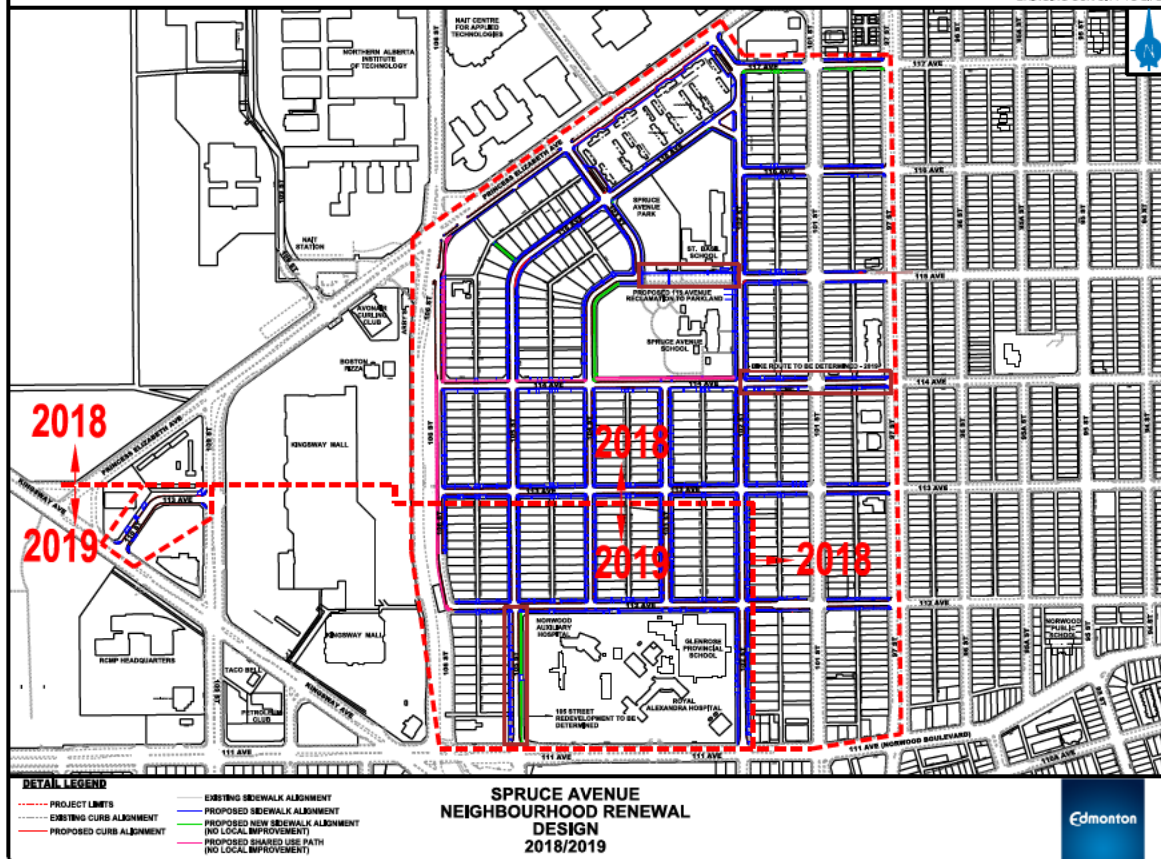




THE WAY AHEAD

BUILDING GREAT NEIGHBOURHOODS

TRANSFORMING **EDMONTON**
BRINGING OUR CITY TO LIFE

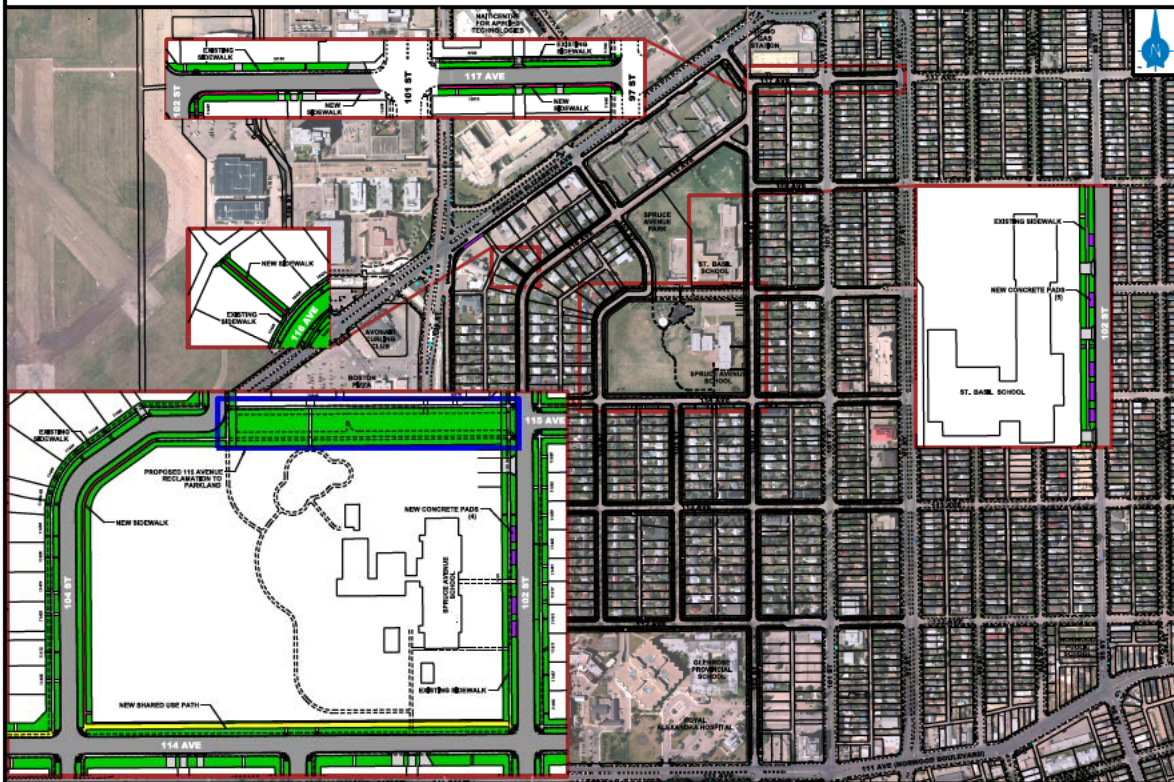




THE WAY AHEAD

BUILDING GREAT NEIGHBOURHOODS

TRANSFORMING **EDMONTON**
BRINGING OUR CITY TO LIFE



- DETAIL LEGEND**
- NEW CONCRETE PADS
 - RECONSTRUCT SIDEWALK
 - NEW SIDEWALK
 - GRASS
 - NEW SHARED USE PATH

**SPRUCE AVENUE
NEIGHBOURHOOD RENEWAL
SIDEWALK ENHANCEMENTS
2018/2019**

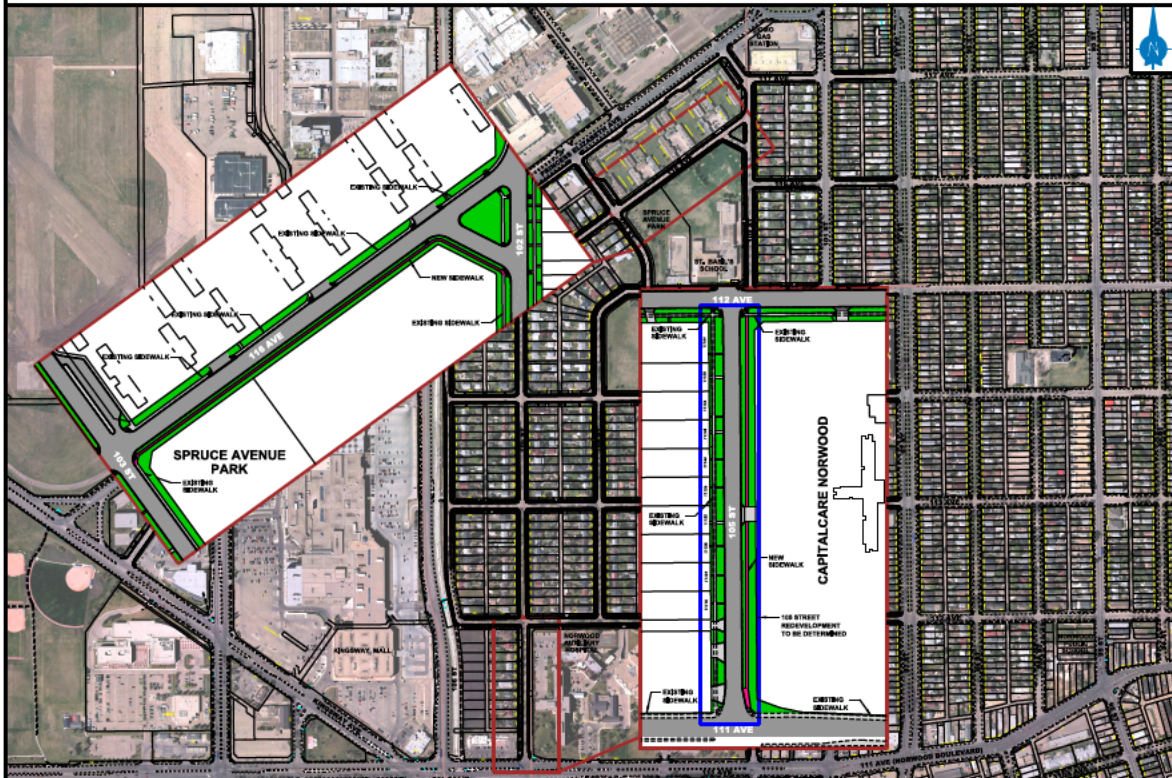
Edmonton



THE WAY AHEAD

BUILDING GREAT NEIGHBOURHOODS

TRANSFORMING **EDMONTON**
BRINGING OUR CITY TO LIFE



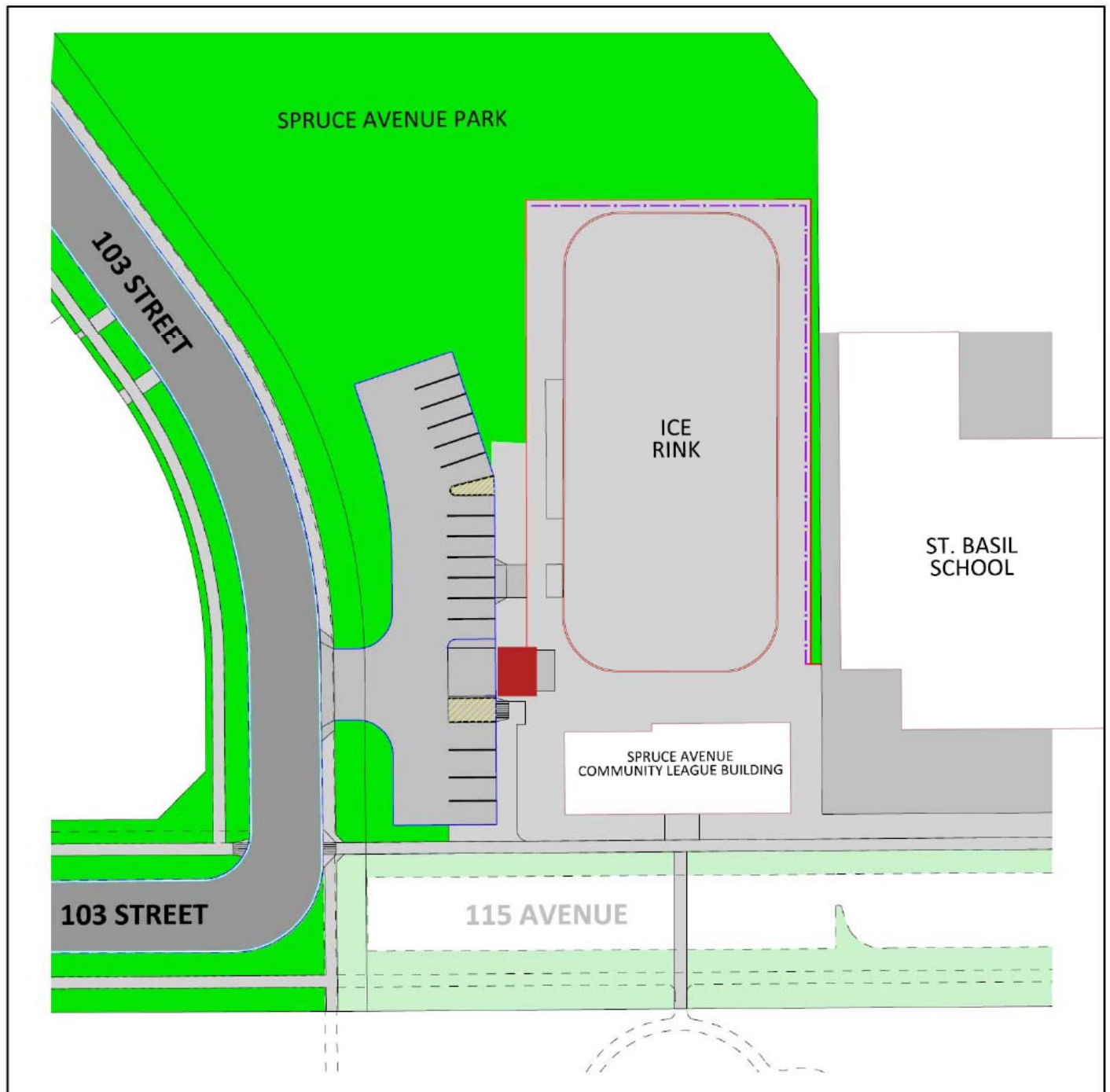
DETAIL LEGEND
RECONSTRUCT SIDEWALK
NEW SIDEWALK
GRASS

**SPRUCE AVENUE
NEIGHBOURHOOD RENEWAL
SIDEWALK ENHANCEMENTS
2018/2019**

Edmonton

Spruce Avenue Community League Parking Lot

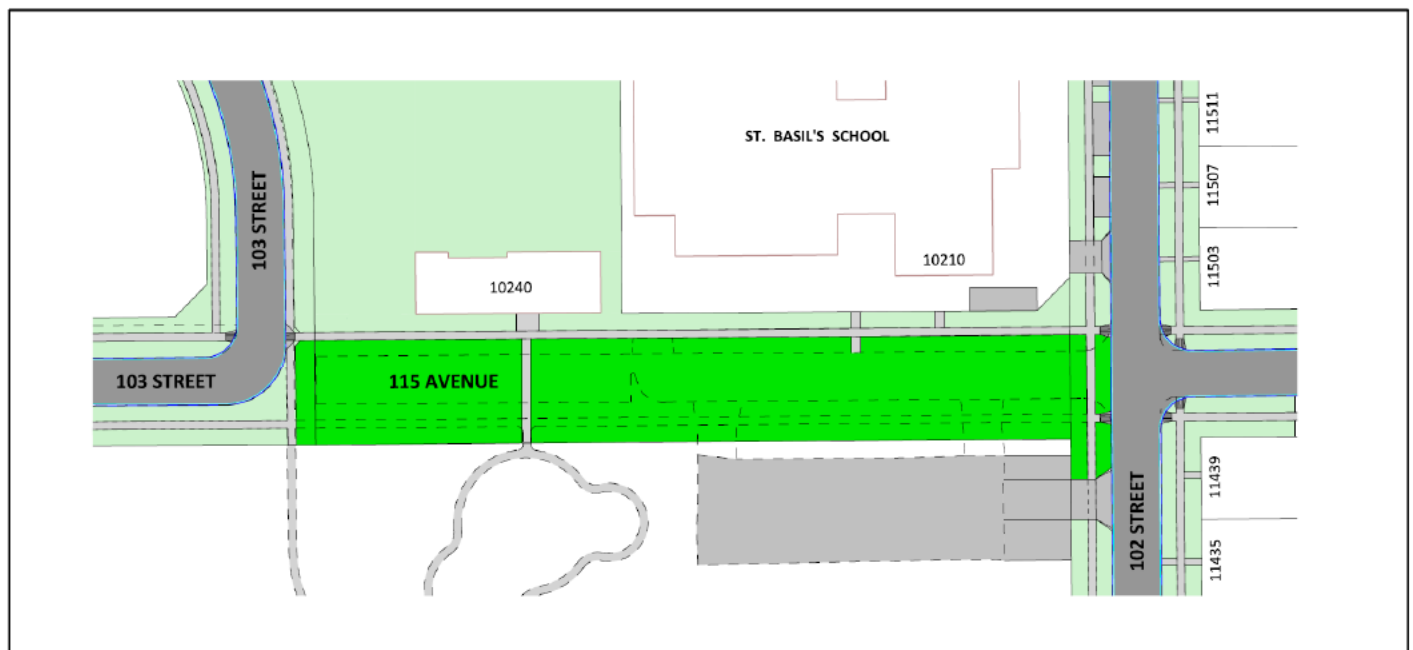
A new parking lot will be built along the west side of the Community League Hall and Ice Rink. The parking lot has 17 stalls and is funded by the Spruce Avenue Community League. Construction will occur in 2018 with Neighbourhood Renewal.



115 Avenue Reclamation to Parkland

The proposed project includes:

Removal of road base, replacement of sidewalk, installation of pedestrian level lights, sod and sidewalk connections to the playground. In addition, the intersection on 102 Street & 115 Avenue will be changed to an all way stop, with marked pedestrian crossings on both the north and south side of the intersection. Please see the signage display for more information.



In 1977, 115 Avenue was closed and rezoned to parkland. At that time the west side of 115 Avenue was closed.

In 2007, a master plan was developed for the entire park space. The community league applied for grants and were denied the as the reclamation of park space is a municipal responsibility.

In 2015, the City developed a concept plan showing the reclamation of park space and delayed the implementation to coordinate with the Neighbourhood Renewal Program to ensure the construction of the area around the park was done at one time.

Reclamation to parkland is anticipated to begin in 2018.

