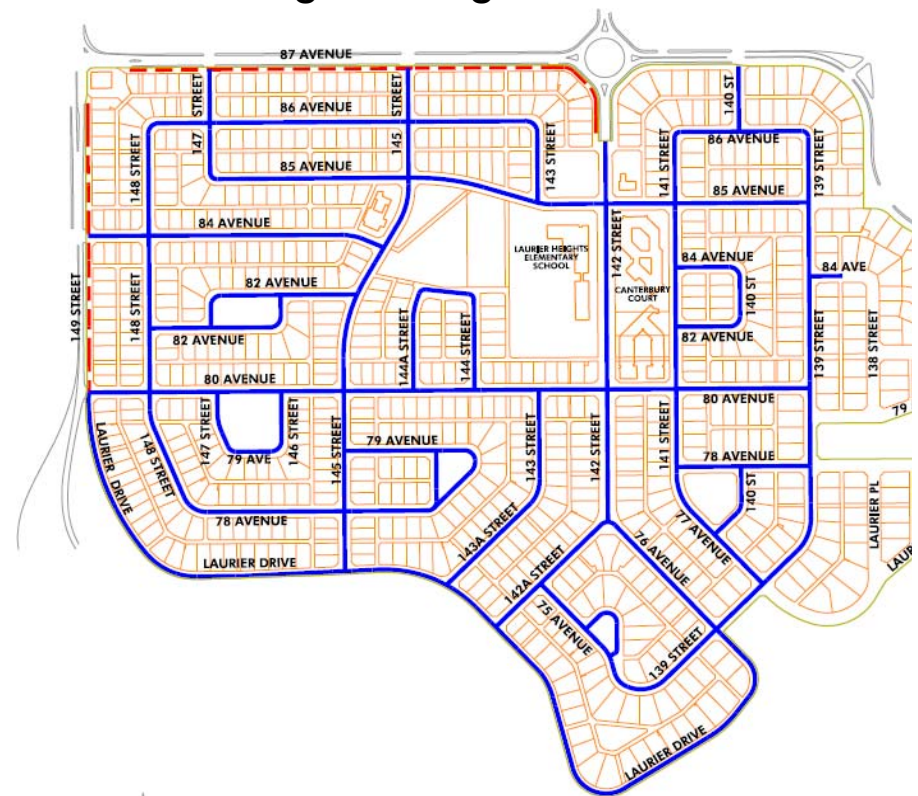


LAURIER HEIGHTS NEIGHBOURHOOD RENEWAL PROGRAM

Condition & Reconstruction Scope

- Age: +50 years (1958-84)
- Pavement: poor condition
- Concrete: poor condition (west of 139 St)
- Surface works: \$33 million (conceptual)
- Cost includes road overlay east of 139 St; replacement of pavement, sidewalks, curb and gutter west of 139 St; streetlight upgrades for the entire neighbourhood and upgrading Buena Vista Road
- does NOT include alleys or arterial roadways

Laurier Heights Neighbourhood Renewal



Design Considerations

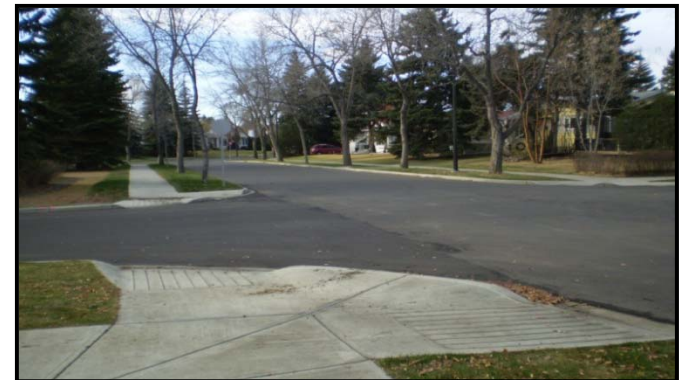
Active Modes

- Addressing accessibility issues by providing new sidewalk/trail connections



Intersections

- Adding curb ramps, improving curb radius, and improving the overall operation



Design Considerations

Road Width

- Where possible, roads are sized to current standards
Collector = 11.5 m
Local = 9.0 m



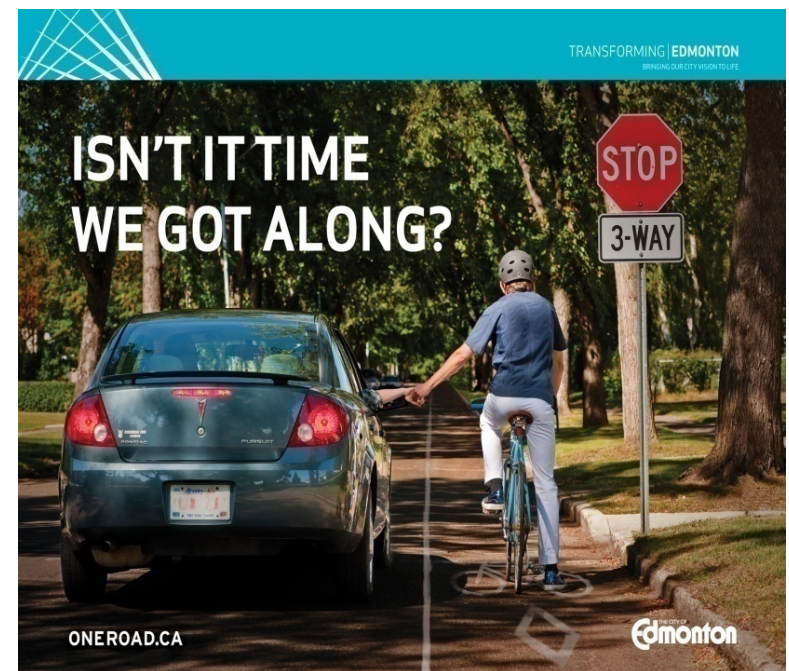
Curb Type

- Roll face curb
- Straight face curb

Active Transportation

Improve infrastructure

- **Sidewalks:** In residential neighbourhoods, ensure accessibility to all bus stops and provide a sidewalk on at least one side of the street.
- **Bicycle routes:** Use the Bicycle Transportation Plan to implement bike lanes, shared-use lanes and shared-use pathways.



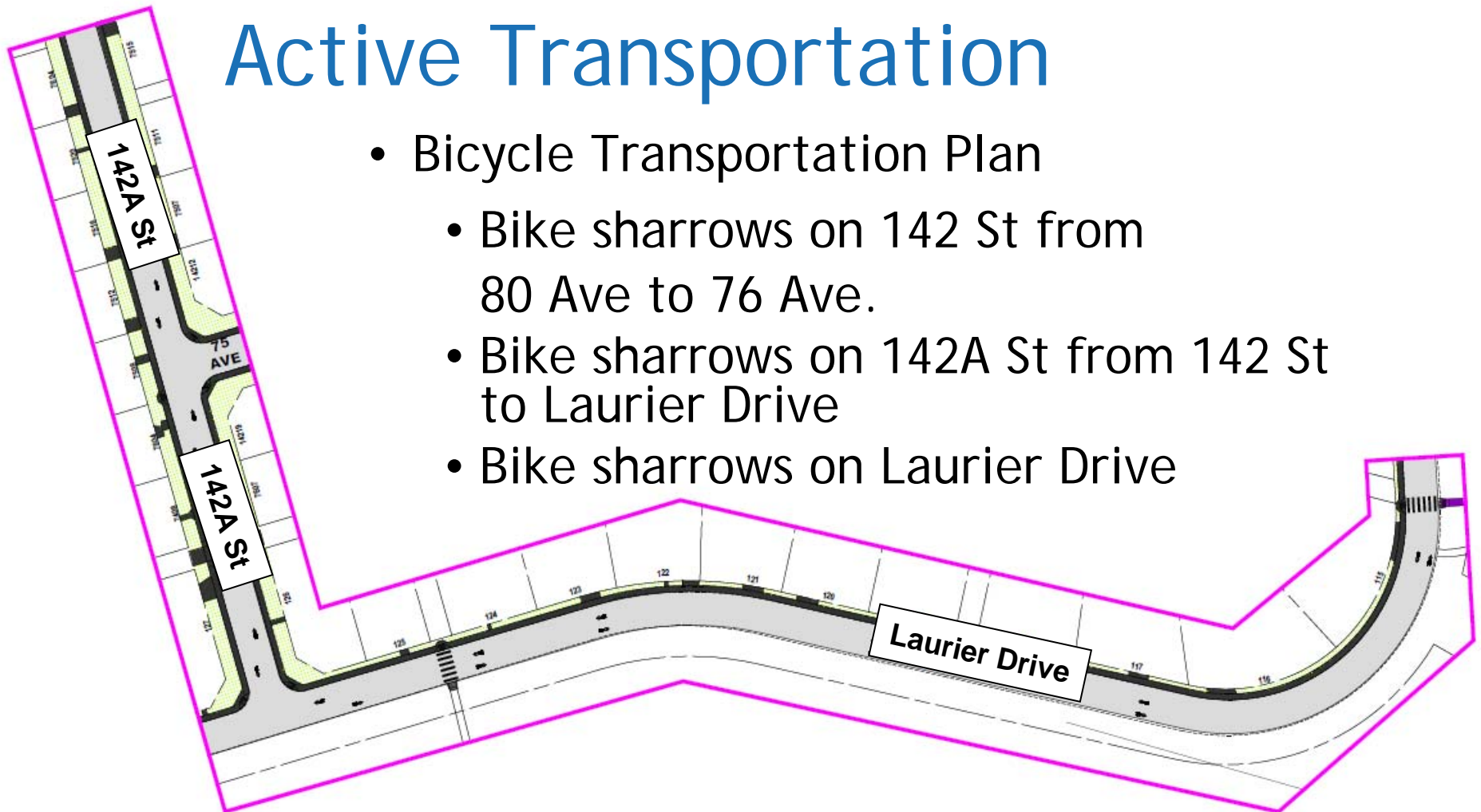
Active Transportation

- Bicycle Transportation Plan
 - Northbound and Southbound bike lanes on 142 St from 85 Ave to 80 Ave



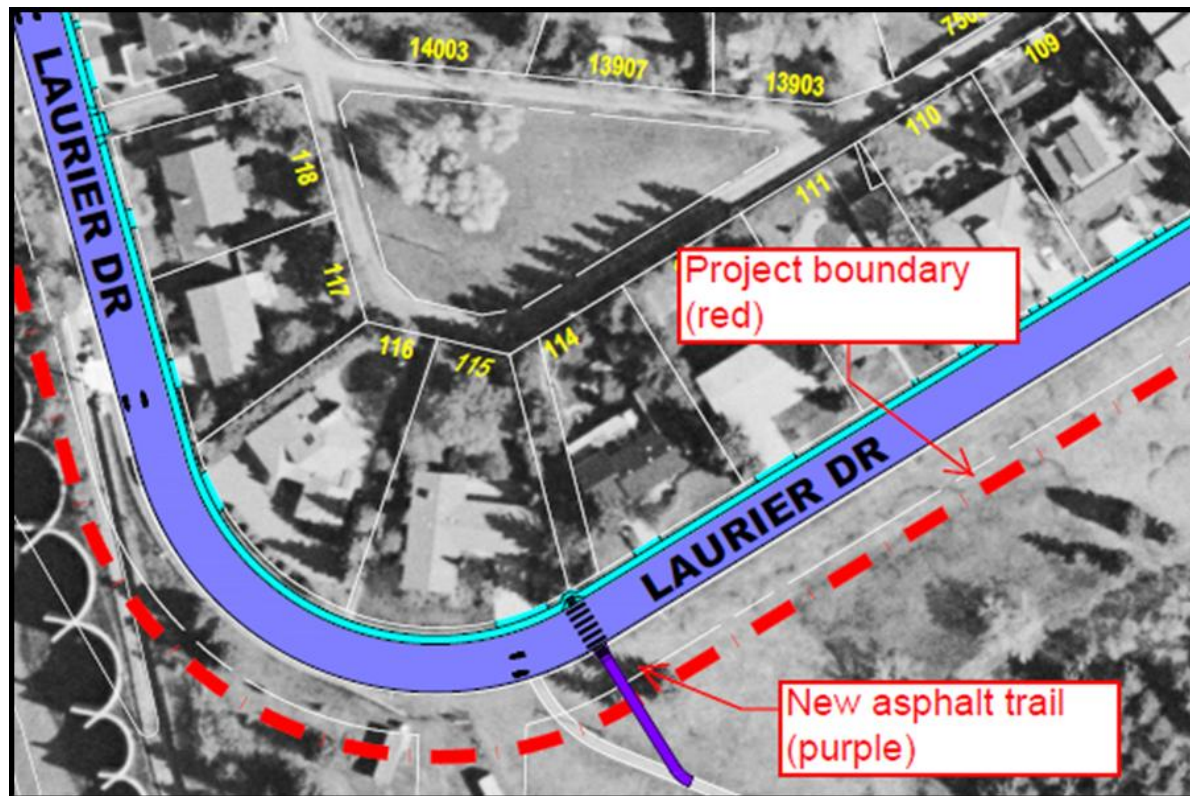
Active Transportation

- Bicycle Transportation Plan
 - Bike sharrows on 142 St from 80 Ave to 76 Ave.
 - Bike sharrows on 142A St from 142 St to Laurier Drive
 - Bike sharrows on Laurier Drive



Active Transportation

- Realignment of asphalt trail



Active Transportation

- New sidewalk on service road:
 - 87 Ave from 149 St to 142 St, south side of service road
 - 149 St from 87 Ave to 80 Ave, east side of service road



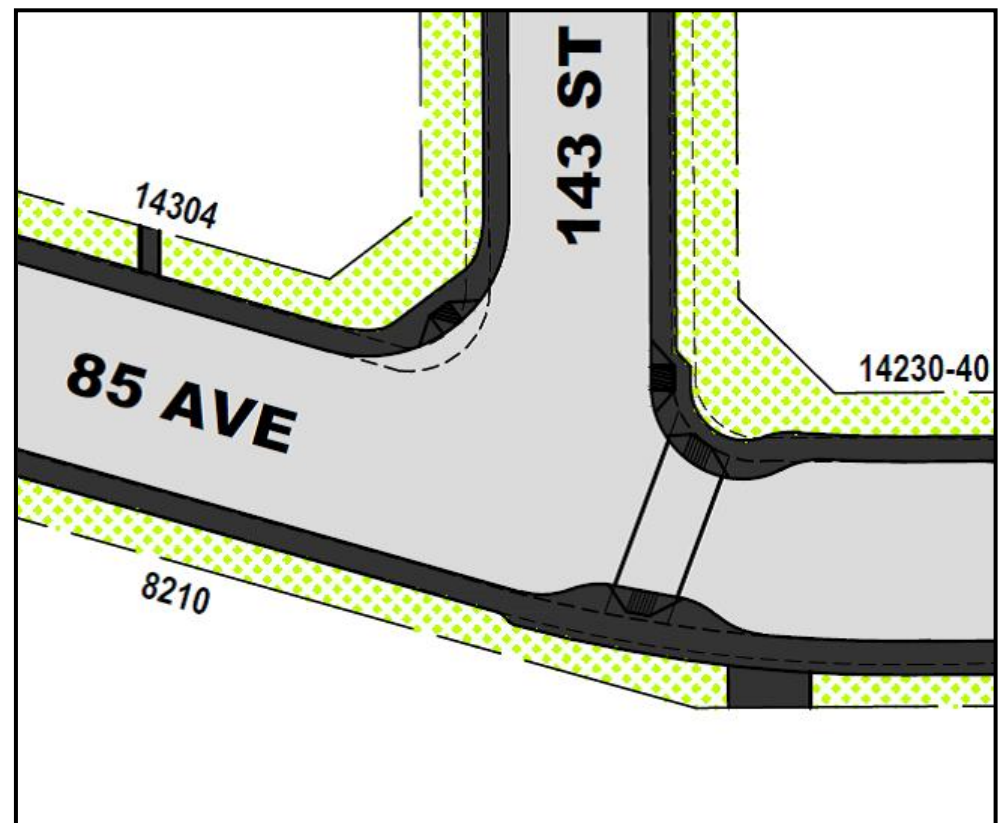
Active Transportation

- New sidewalk:
 - 83 Ave from 144A St to 144 St
 - North of 144 St/83 Ave



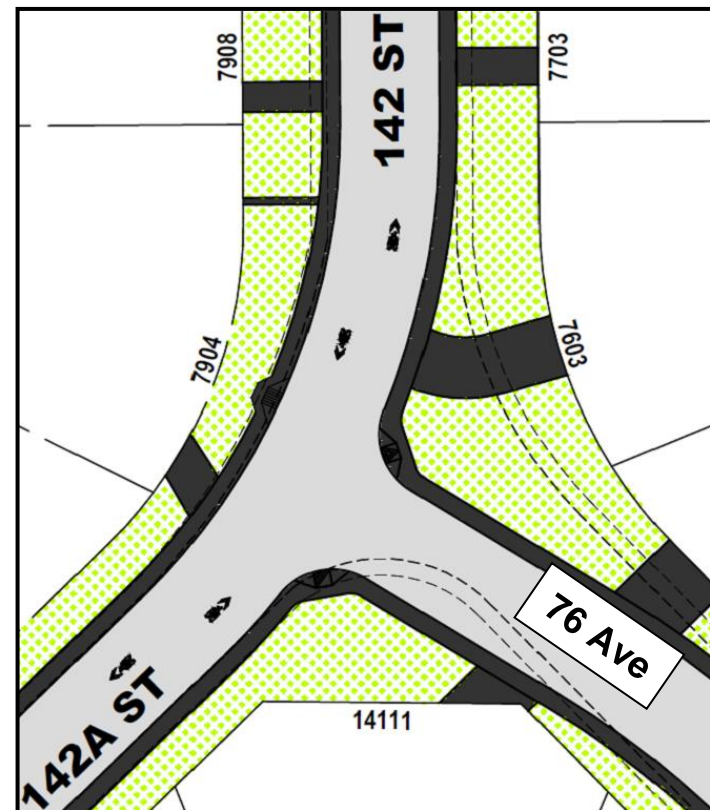
Intersection Improvements

- Curb Extension at 85 Ave/ 143 St
 - Reduce pedestrian crossing distance



Intersection Improvements

- 142A St/76 Ave/142 St
 - T-intersection
 - Improves vehicle sightlines from all directions of the intersection, improves operations and reduces the pedestrian crossing distance at this location.

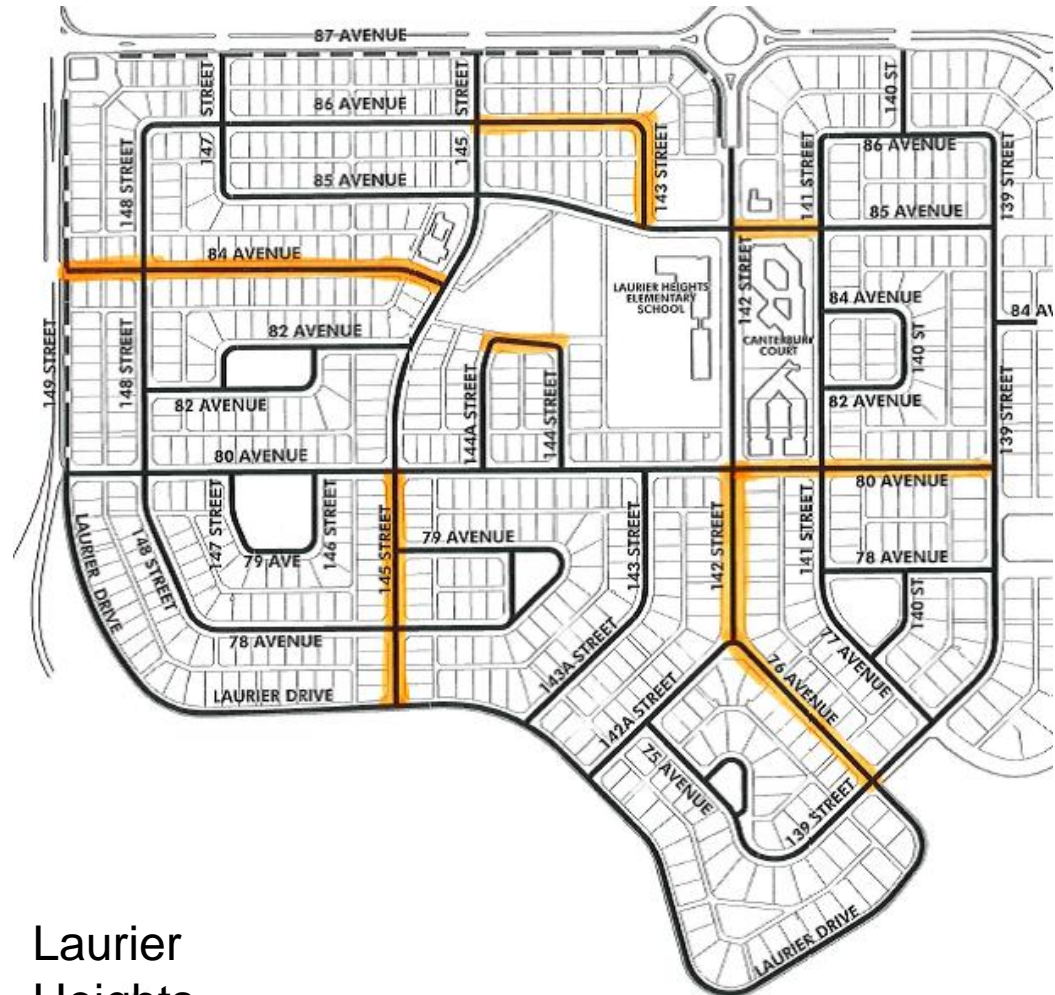


Road Width

- Narrowing of local roadways to 9 m to adhere to current City standards:
 - 86 Ave from 145 St to 143 St
 - 143 St from 86 Ave to 85 Ave
 - 85 Ave from 142 St to 141 St
 - 84 Ave from 149 St to 145 St
 - 145 St from 80 Ave to Laurier Drive
 - 142 St from 80 Ave to 76 Ave
 - 76 Ave from 142 St to 139 St
 - 80 Ave from 142 St to 139 St
 - 83 Ave from 144A St to 144 St

Road Width

- Orange highlights: narrowing of local roadways to 9 m to adhere to current City standards.



Laurier
Heights

Buena Vista Road

- Four lanes to two lanes
- Bike lanes on both sides of road
- New boulevard sidewalk
- Proposed curb extensions
- Proposed intersection realignment
- Removal of centre median

Curb Design

- Straight face curb
 - Collector roadways
 - Bus routes
 - School areas
 - Park areas
- Roll faced curb
 - Local roadways



Curb Design

ROLL FACE MONOWALK



STRAIGHT FACE MONOWALK



Streetlight Design Standards

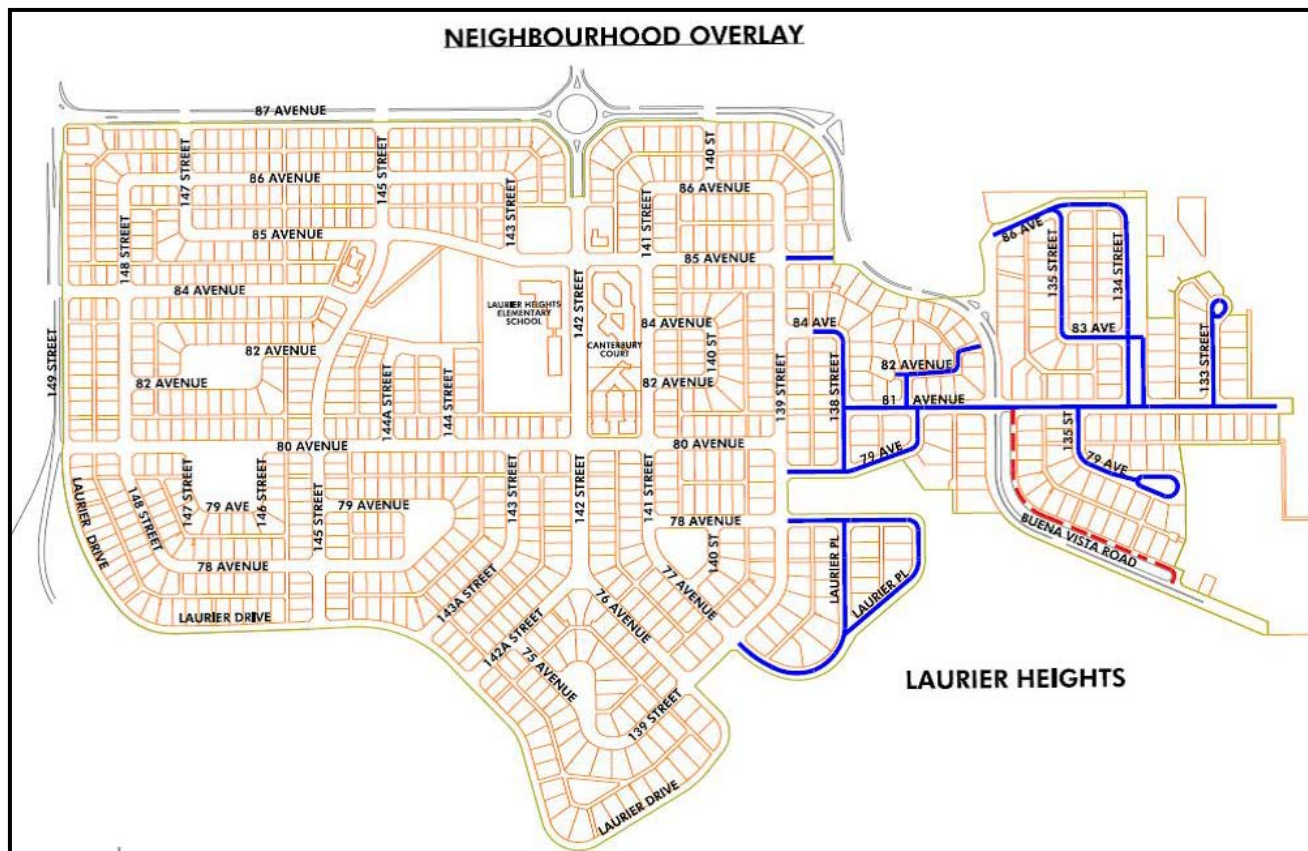
Neighbourhood streetlight system

- Upgraded to energy efficient LED lighting, the new City standard for streetlights.



Construction Staging

- Neighbourhood overlay staged over one year: 2013



Construction Staging

- Reconstruction west of 139 St staged over two years (2014-15)
- Ultimate staging dependant on weather conditions, coordination with utilities, and unforeseen design and construction issues.
- To create minimal disturbance for students, construction activities around the schools will be scheduled during the summer months.

