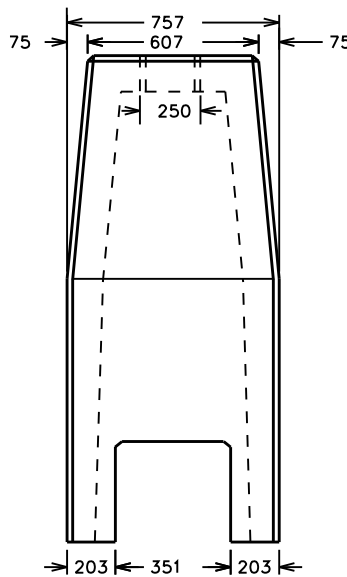
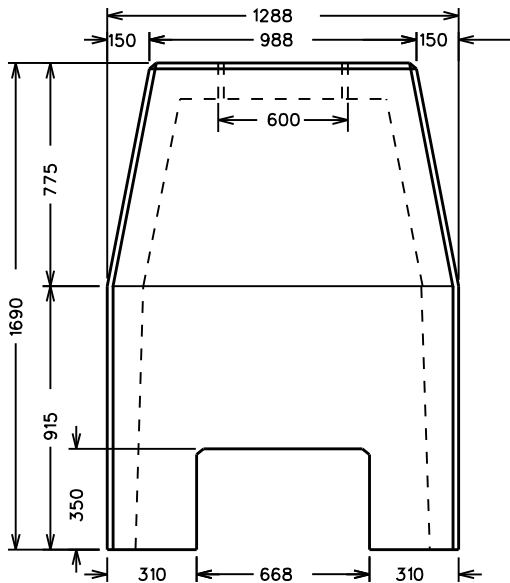
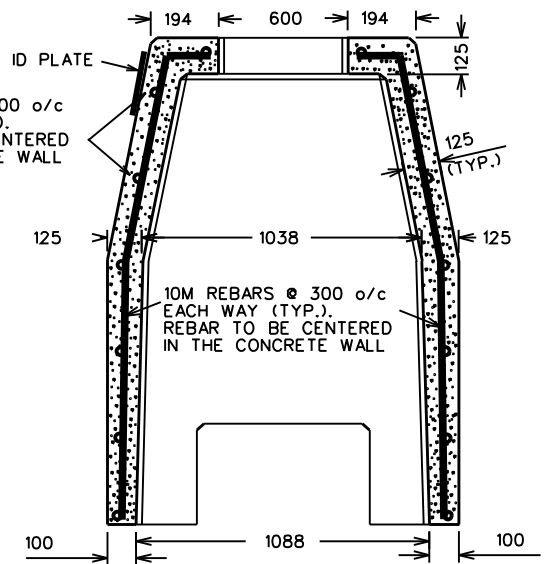


10M REBARS @ 300 o/c EACH WAY (TYP.). REBAR TO BE CENTERED IN THE CONCRETE WALL



NOTES

1. 10M reinforcements shall be placed @ 300 o/c each way and at the center of the concrete wall. All reinforcements shall be of grd. 400, CSA G30.18
2. Concrete:
 - 30 MPa @ 28 days
 - 5% to 8% air
 - 70mm to 100mm slump
 - Type 50 cement
 - 14mm aggregate
3. All reinforcements shall have a min. concrete cover of 75mm
4. Top of base shall be smooth and levelled. Provide 25mm chamfers around the top and 4 corner edges of the base.
5. Placement of concrete and reinforcements shall conformed to the latest of CSA, CAN3 A23.1
6. All dimensions are in mm unless otherwise noted.

	TRANSPORTATION SERVICES TRAFFIC OPERATIONS BRANCH
	TRAFFIC SIGNALS
PRECAST CONCRETE BASE FOR	
TRAFFIC M1 BASE	
NOT TO SCALE	DWG. NO. M1 BASE