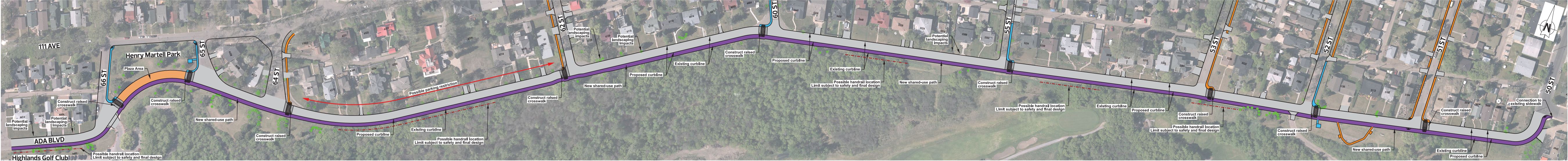


Ada Boulevard



What We Heard	What We Considered	What We Decided
<ul style="list-style-type: none">▪ People highly value Ada Boulevard, where people who drive, bike, and walk all use the road▪ Neighbourhood gem that is treasured for its connection to the river valley and other neighbourhoods▪ People generally have a high level of comfort with the idea of a shared-use path on the south side of Ada Boulevard▪ Pedestrian safety, connectivity, and accessibility are important priorities along Ada Boulevard▪ No sidewalk on the north side of Ada Boulevard▪ Residents preferred to maintain parking and two-way traffic▪ Fencing/rail to be natural and blend into the area▪ Consistent and attractive design along the corridor	<ul style="list-style-type: none">▪ People actively gather and socialize on the south boulevard▪ Previous woonerf and boardwalk options have high maintenance and construction costs▪ Maintenance and snow clearing▪ Minimal impacts to trees	<ul style="list-style-type: none">▪ Provide a safe corridor for all modes of travel▪ Retain as much of the original feel of Ada Boulevard as possible while keeping overall safety as a priority▪ Add a shared-use path along the south side of Ada Boulevard▪ Add a new plaza area in front of Henry Martell Park▪ Maintain two-way traffic▪ Maintain on-street parking in most areas▪ Narrow the roadway and add raised crosswalks to slow traffic, increase pedestrian safety and accessibility▪ Raised crosswalks will have red paving stones to reflect the heritage of Ada Boulevard▪ Parking may be restricted from 62–64 Street in some areas to preserve mature trees (Final locations to be determined)▪ Shift the road slightly to the north (0.5–1.0m) Exact width to be determined during field designs to preserve trees and shorten the length of the handrails required▪ Maintain existing mature trees▪ Create a consistent design along the corridor by adding a 3.0m shared-use path on the south side of Ada Boulevard and a 7.5m road width where possible

Please place a dot on your preferred type of railing (Note: Images are samples)



Railing locations, type and design will be finalized after completion of safety review

