

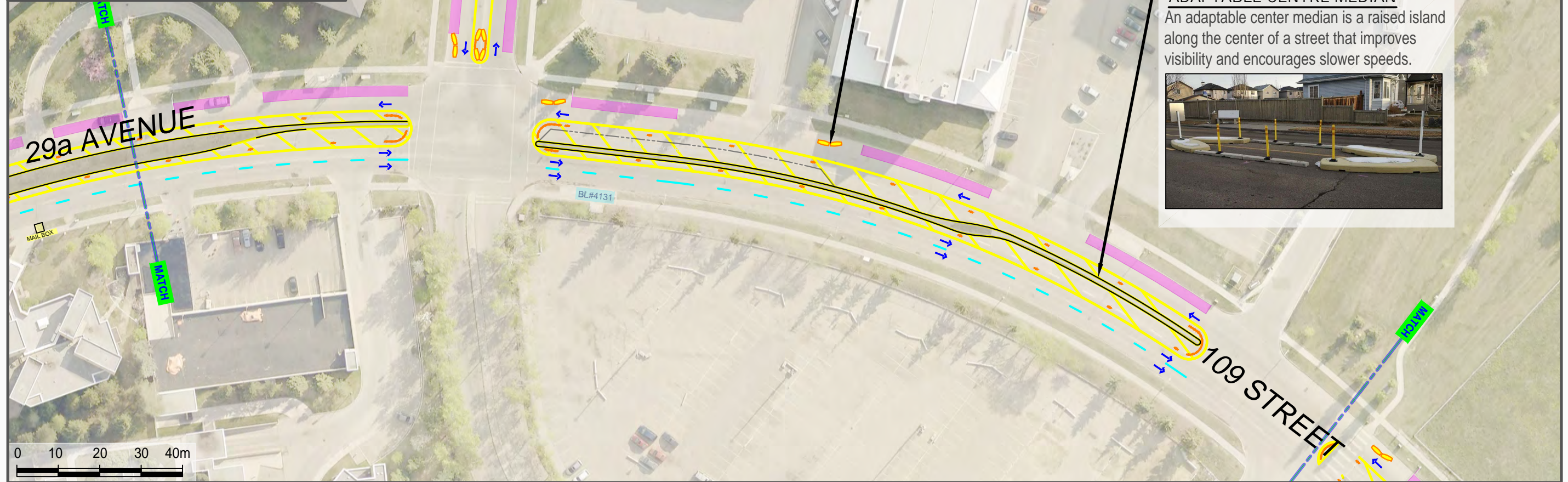
- LEGEND:**
- TRAVELED WAY
  - PARKING
  - CURB (CONCRETE)
  - CURB (PLASTIC)
  - PAINT (YELLOW)
  - PAINT (WHITE)

**ADAPTABLE CURB EXTENSION**

Adaptable curb extensions extend into the roadway, either at crossings or midblock and help to define the use of the road. They are typically placed to provide shorter crossing distances near pedestrian crossings or to help define where parking is permitted.

**ADAPTABLE CENTRE MEDIAN**

An adaptable center median is a raised island along the center of a street that improves visibility and encourages slower speeds.



TOWARDS 40  
 SAFE MOBILITY IMPROVEMENTS  
 DRAFT DESIGN - SUBJECT TO REVIEW AND SITE CONDITIONS

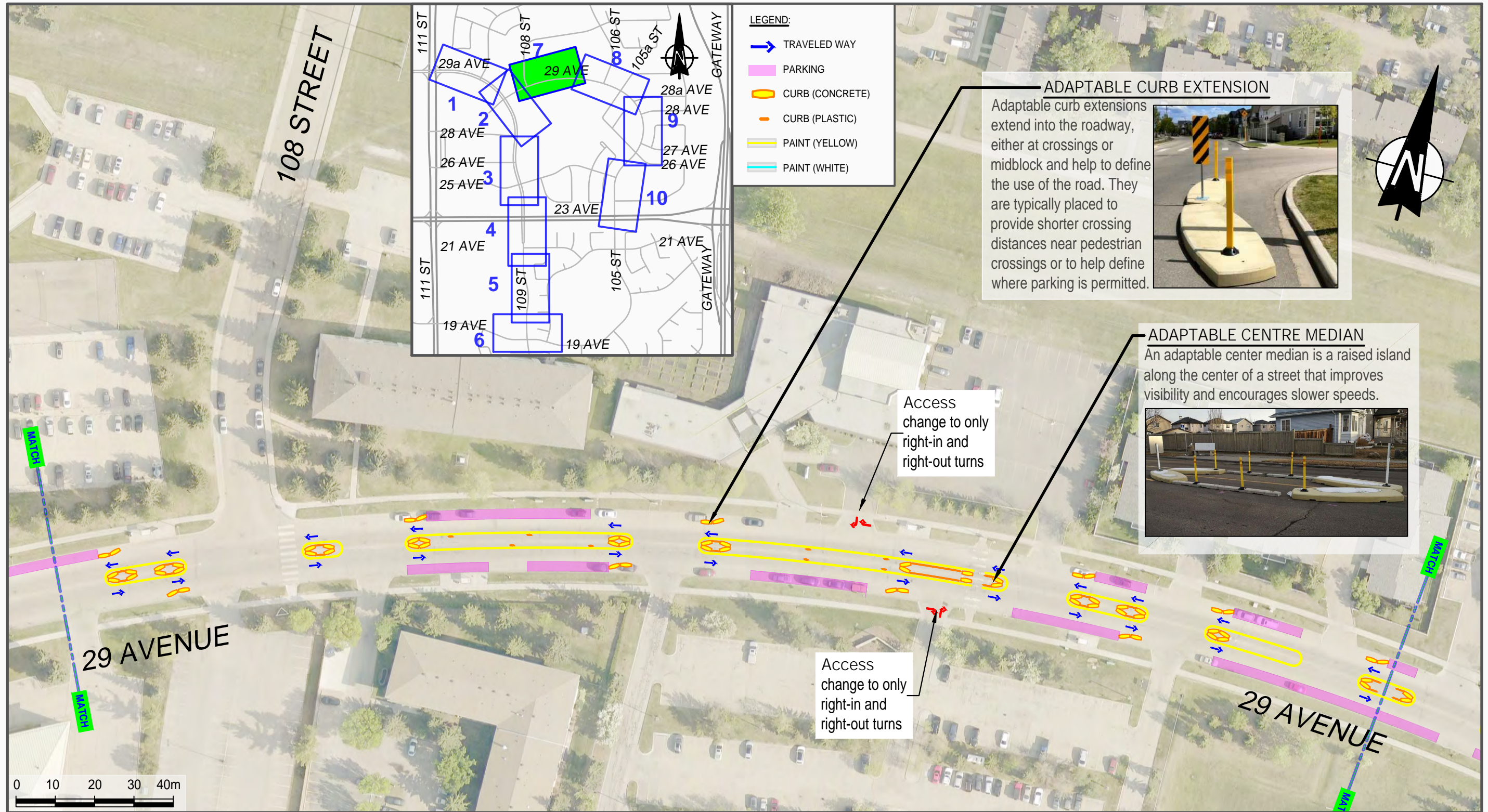
29a Avenue / 109 Street and 29 Avenue / 105 Street (Ermineskin / Keheewin)

C-2

SAFE MOBILITY  
 PARKS AND ROADS  
 CITY OPERATIONS

June 3, 2026





TOWARDS 40  
 SAFE MOBILITY IMPROVEMENTS  
 DRAFT DESIGN - SUBJECT TO REVIEW AND SITE CONDITIONS

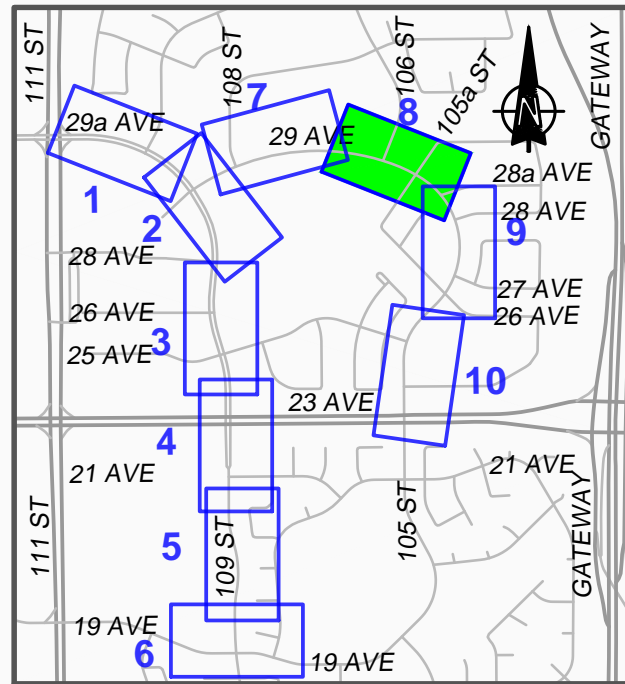
29a Avenue / 109 Street and 29 Avenue / 105 Street (Ermineskin / Keheewin)

C-7

SAFE MOBILITY  
 PARKS AND ROADS  
 CITY OPERATIONS

June 4, 2026





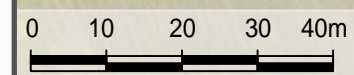
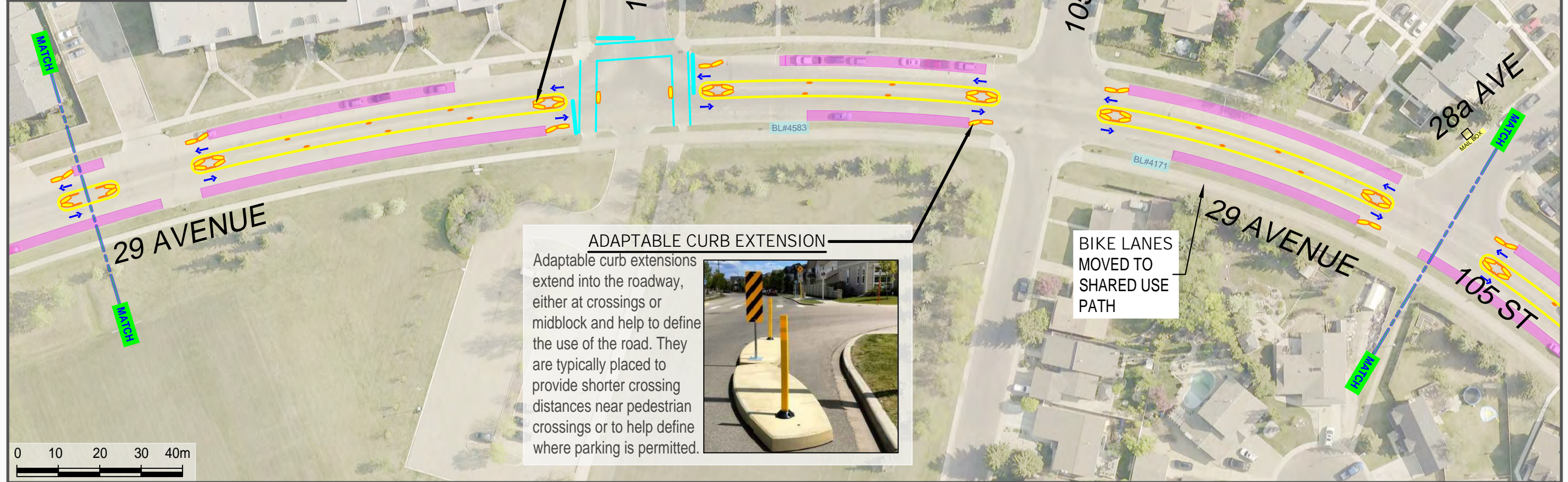
**LEGEND:**

- TRAVELED WAY
- PARKING
- CURB (CONCRETE)
- CURB (PLASTIC)
- PAINT (YELLOW)
- PAINT (WHITE)

**ADAPTABLE CENTRE MEDIAN**  
 An adaptable center median is a raised island along the center of a street that improves visibility and encourages slower speeds.

**ADAPTABLE CURB EXTENSION**  
 Adaptable curb extensions extend into the roadway, either at crossings or midblock and help to define the use of the road. They are typically placed to provide shorter crossing distances near pedestrian crossings or to help define where parking is permitted.

BIKE LANES  
 MOVED TO  
 SHARED USE  
 PATH



TOWARDS 40  
 SAFE MOBILITY IMPROVEMENTS  
 DRAFT DESIGN - SUBJECT TO REVIEW AND SITE CONDITIONS

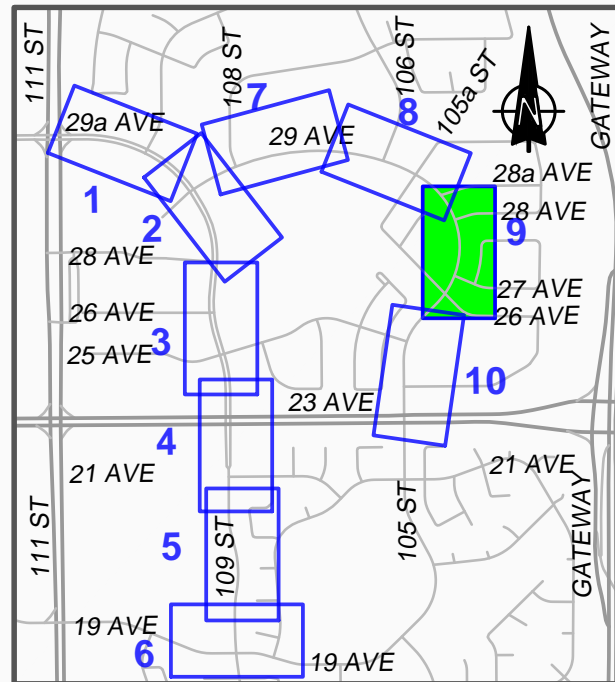
29a Avenue / 109 Street and 29 Avenue / 105 Street (Ermineskin / Keheewin)

C-8

SAFE MOBILITY  
 PARKS AND ROADS  
 CITY OPERATIONS

June 4, 2026



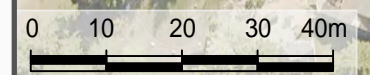
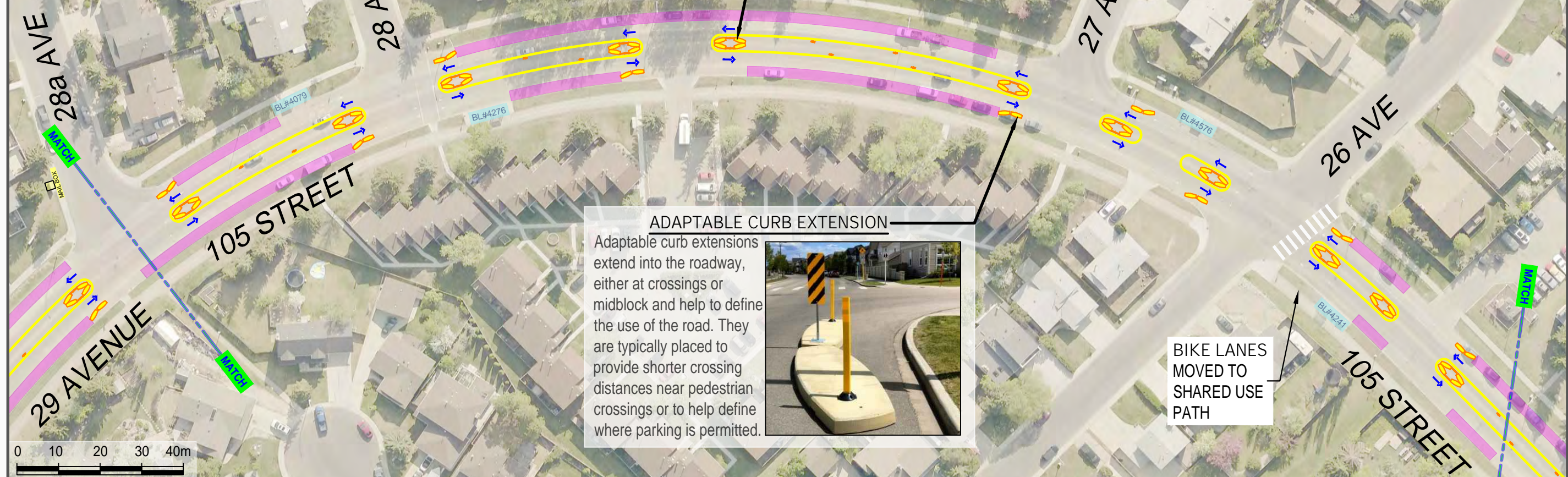


- LEGEND:**
- TRAVELED WAY
  - PARKING
  - CURB (CONCRETE)
  - CURB (PLASTIC)
  - PAINT (YELLOW)
  - PAINT (WHITE)

**ADAPTABLE CENTRE MEDIAN**  
 An adaptable center median is a raised island along the center of a street that improves visibility and encourages slower speeds.

**ADAPTABLE CURB EXTENSION**  
 Adaptable curb extensions extend into the roadway, either at crossings or midblock and help to define the use of the road. They are typically placed to provide shorter crossing distances near pedestrian crossings or to help define where parking is permitted.

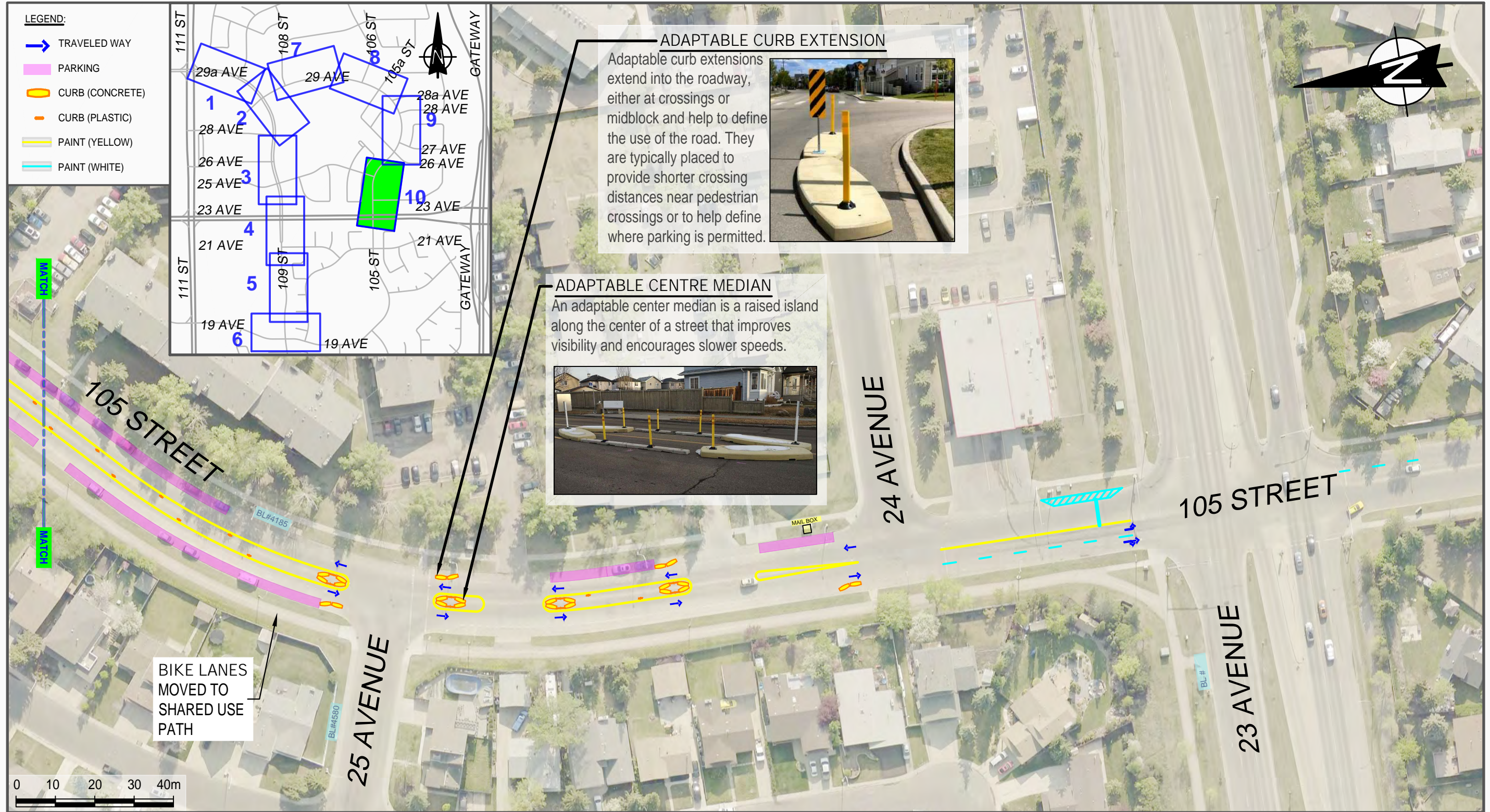
BIKE LANES  
 MOVED TO  
 SHARED USE  
 PATH



TOWARDS 40  
 SAFE MOBILITY IMPROVEMENTS  
 DRAFT DESIGN - SUBJECT TO REVIEW AND SITE CONDITIONS

SAFE MOBILITY  
 PARKS AND ROADS  
 CITY OPERATIONS





TOWARDS 40  
 SAFE MOBILITY IMPROVEMENTS  
 DRAFT DESIGN - SUBJECT TO REVIEW AND SITE CONDITIONS

29a Avenue / 109 Street and 29 Avenue / 105 Street (Ermineskin / Keheewin)

C-10

SAFE MOBILITY  
 PARKS AND ROADS  
 CITY OPERATIONS

June 4, 2026

