

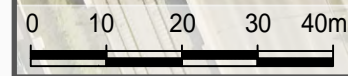
- LEGEND:**
- TRAVELED WAY
 - PARKING
 - CURB (CONCRETE)
 - CURB (PLASTIC)
 - PAINT (YELLOW)
 - PAINT (WHITE)

ADAPTABLE CURB EXTENSION

Adaptable curb extensions extend into the roadway, either at crossings or midblock and help to define the use of the road. They are typically placed to provide shorter crossing distances near pedestrian crossings or to help define where parking is permitted.

ADAPTABLE CENTRE MEDIAN

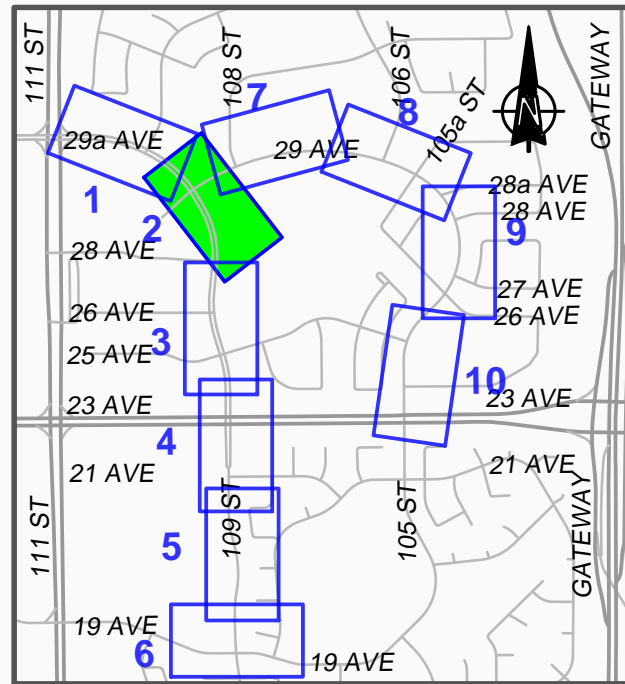
An adaptable center median is a raised island along the center of a street that improves visibility and encourages slower speeds.



TOWARDS 40
 SAFE MOBILITY IMPROVEMENTS
 DRAFT DESIGN - SUBJECT TO REVIEW AND SITE CONDITIONS

SAFE MOBILITY
 PARKS AND ROADS
 CITY OPERATIONS





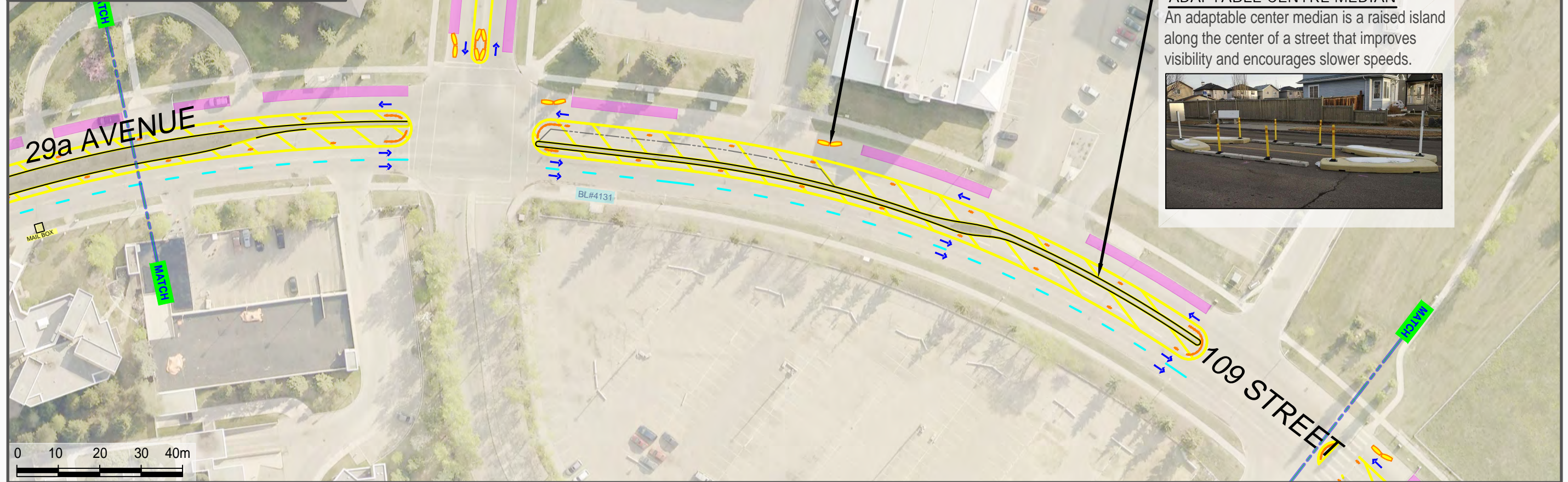
- LEGEND:**
- TRAVELED WAY
 - PARKING
 - CURB (CONCRETE)
 - CURB (PLASTIC)
 - PAINT (YELLOW)
 - PAINT (WHITE)

ADAPTABLE CURB EXTENSION

Adaptable curb extensions extend into the roadway, either at crossings or midblock and help to define the use of the road. They are typically placed to provide shorter crossing distances near pedestrian crossings or to help define where parking is permitted.

ADAPTABLE CENTRE MEDIAN

An adaptable center median is a raised island along the center of a street that improves visibility and encourages slower speeds.



TOWARDS 40
 SAFE MOBILITY IMPROVEMENTS
 DRAFT DESIGN - SUBJECT TO REVIEW AND SITE CONDITIONS

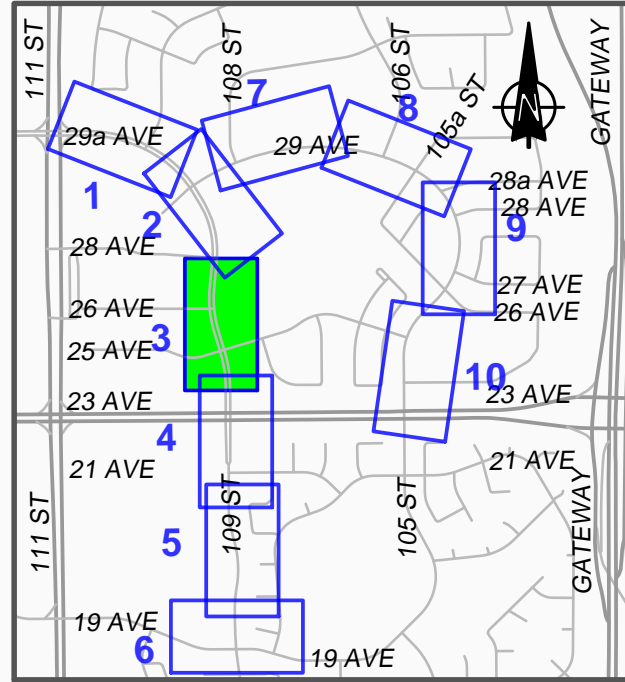
29a Avenue / 109 Street and 29 Avenue / 105 Street (Ermineskin / Keheewin)

C-2

SAFE MOBILITY
 PARKS AND ROADS
 CITY OPERATIONS

June 3, 2026



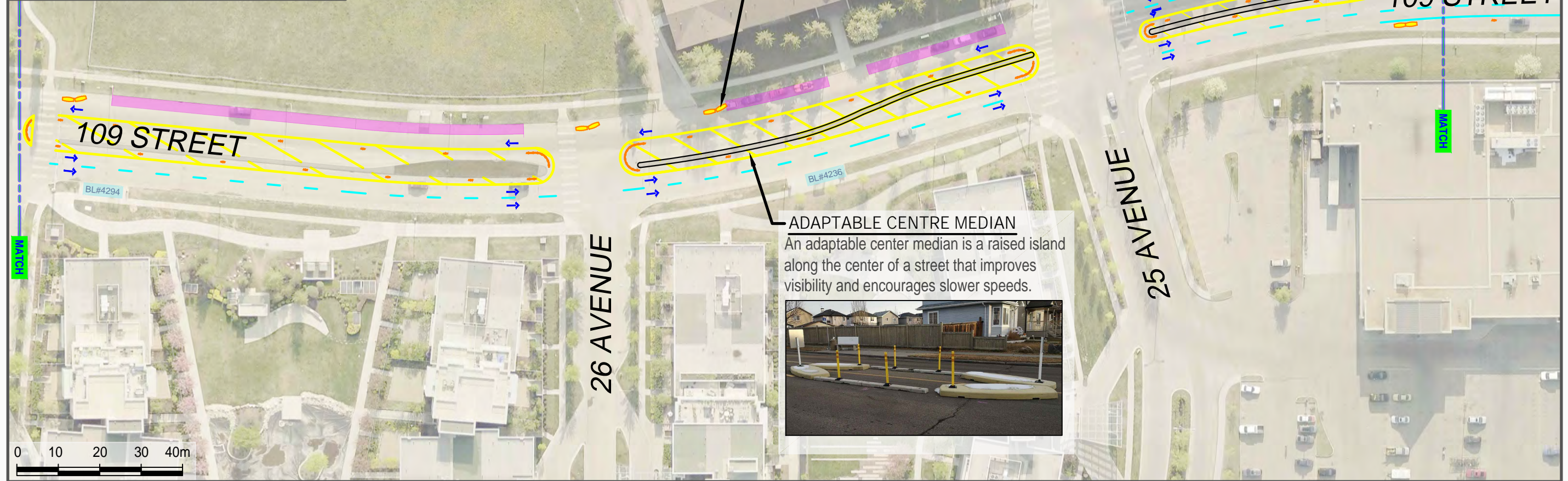


LEGEND:

- TRAVELED WAY
- PARKING
- CURB (CONCRETE)
- CURB (PLASTIC)
- PAINT (YELLOW)
- PAINT (WHITE)

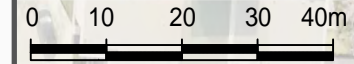
ADAPTABLE CURB EXTENSION

Adaptable curb extensions extend into the roadway, either at crossings or midblock and help to define the use of the road. They are typically placed to provide shorter crossing distances near pedestrian crossings or to help define where parking is permitted.



ADAPTABLE CENTRE MEDIAN

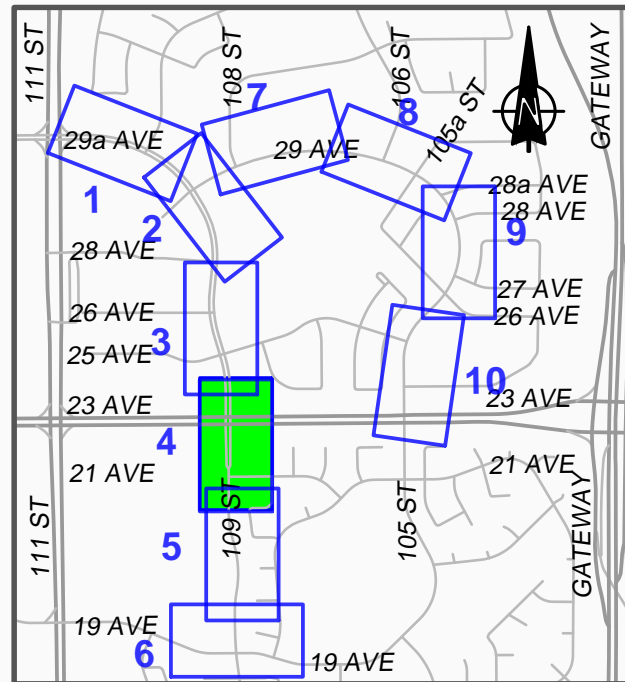
An adaptable center median is a raised island along the center of a street that improves visibility and encourages slower speeds.



TOWARDS 40
 SAFE MOBILITY IMPROVEMENTS
 DRAFT DESIGN - SUBJECT TO REVIEW AND SITE CONDITIONS

29a Avenue / 109 Street and 29 Avenue / 105 Street (Ermineskin / Keheewin)





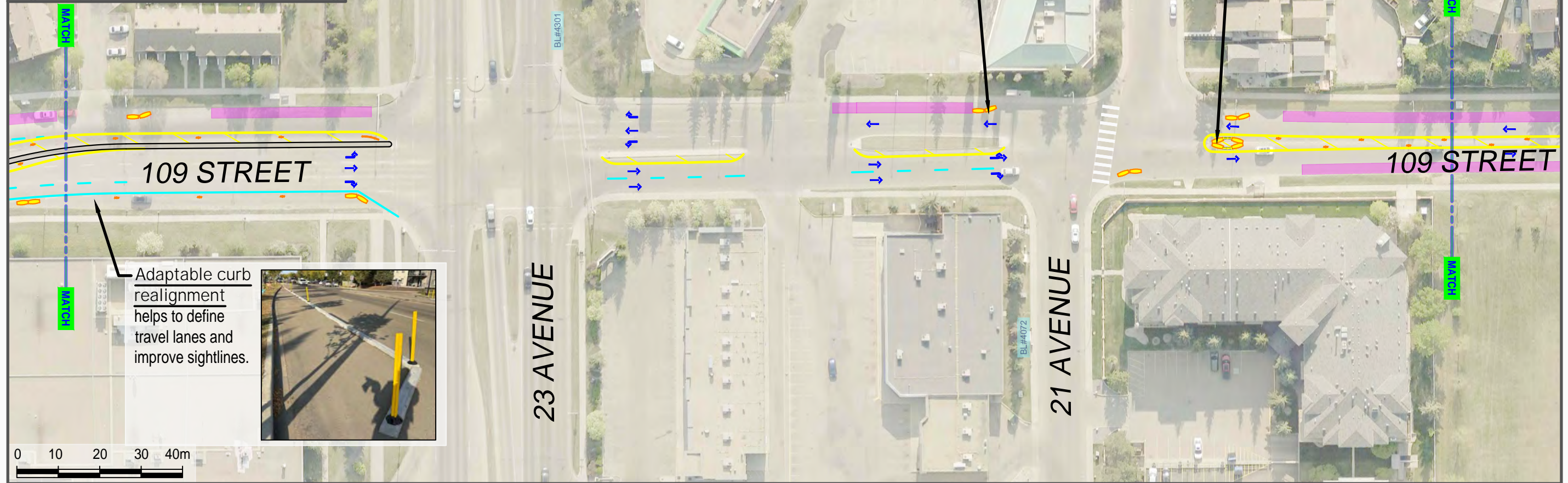
- LEGEND:**
- TRAVELED WAY
 - PARKING
 - CURB (CONCRETE)
 - CURB (PLASTIC)
 - PAINT (YELLOW)
 - PAINT (WHITE)

ADAPTABLE CURB EXTENSION

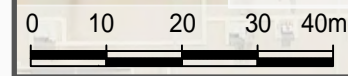
Adaptable curb extensions extend into the roadway, either at crossings or midblock and help to define the use of the road. They are typically placed to provide shorter crossing distances near pedestrian crossings or to help define where parking is permitted.

ADAPTABLE CENTRE MEDIAN

An adaptable center median is a raised island along the center of a street that improves visibility and encourages slower speeds.



Adaptable curb realignment helps to define travel lanes and improve sightlines.



TOWARDS 40
 SAFE MOBILITY IMPROVEMENTS
 DRAFT DESIGN - SUBJECT TO REVIEW AND SITE CONDITIONS

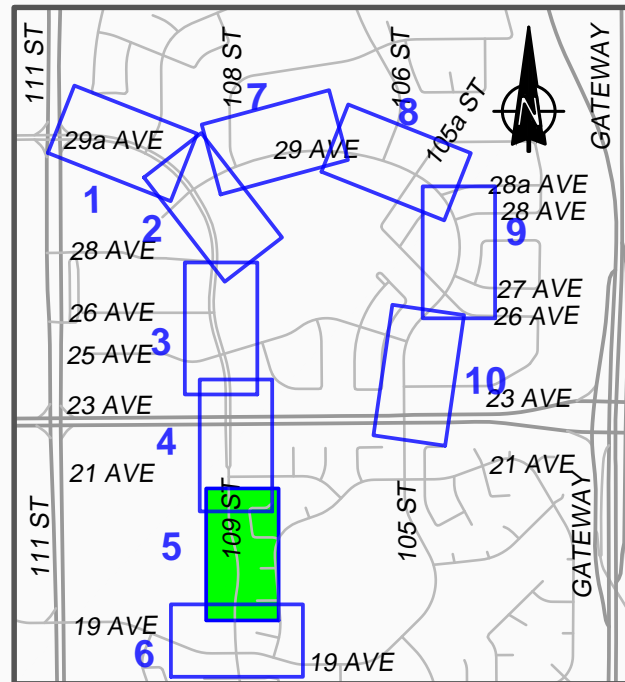
29a Avenue / 109 Street and 29 Avenue / 105 Street (Ermineskin / Keheewin)

C-4

SAFE MOBILITY
 PARKS AND ROADS
 CITY OPERATIONS

June 3, 2026





- LEGEND:**
- TRAVELED WAY
 - PARKING
 - CURB (CONCRETE)
 - CURB (PLASTIC)
 - PAINT (YELLOW)
 - PAINT (WHITE)

ADAPTABLE CURB EXTENSION

Adaptable curb extensions extend into the roadway, either at crossings or midblock and help to define the use of the road. They are typically placed to provide shorter crossing distances near pedestrian crossings or to help define where parking is permitted.



ADAPTABLE CENTRE MEDIAN

An adaptable center median is a raised island along the center of a street that improves visibility and encourages slower speeds.

TOWARDS 40
 SAFE MOBILITY IMPROVEMENTS
 DRAFT DESIGN - SUBJECT TO REVIEW AND SITE CONDITIONS

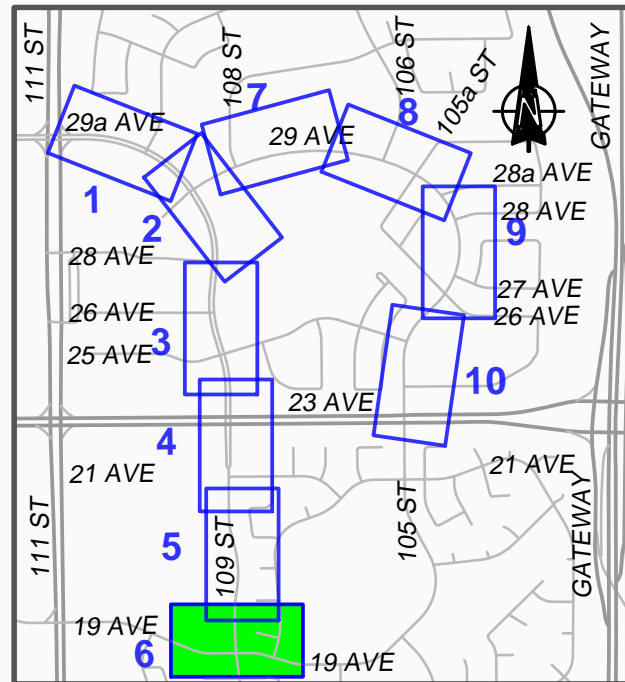
29a Avenue / 109 Street and 29 Avenue / 105 Street (Ermineskin / Keheewin)

C-5

SAFE MOBILITY
 PARKS AND ROADS
 CITY OPERATIONS

June 3, 2026

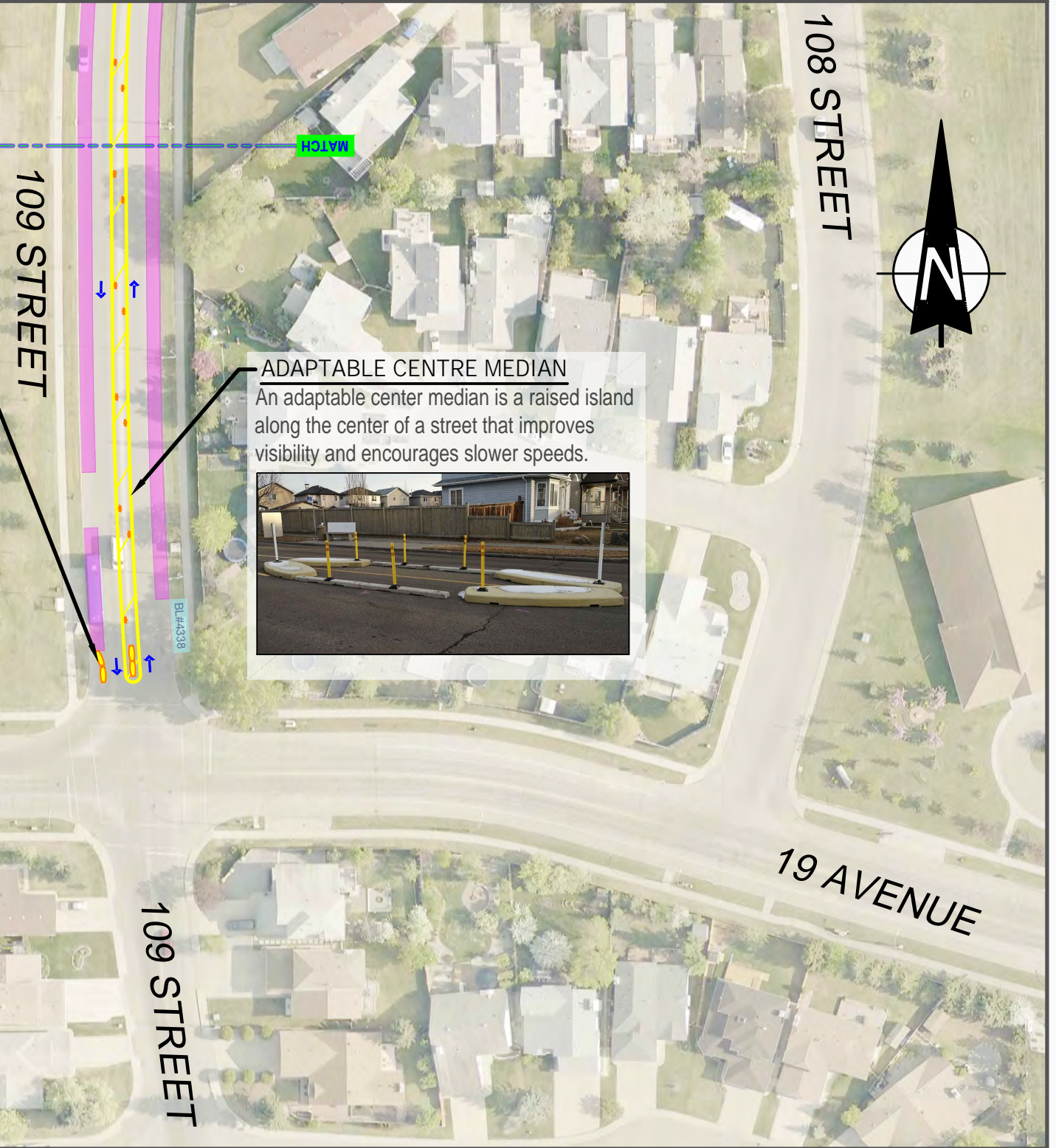




- LEGEND:**
- TRAVELED WAY
 - PARKING
 - CURB (CONCRETE)
 - CURB (PLASTIC)
 - PAINT (YELLOW)
 - PAINT (WHITE)

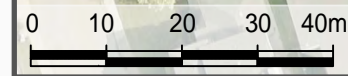
ADAPTABLE CURB EXTENSION

Adaptable curb extensions extend into the roadway, either at crossings or midblock and help to define the use of the road. They are typically placed to provide shorter crossing distances near pedestrian crossings or to help define where parking is permitted.



ADAPTABLE CENTRE MEDIAN

An adaptable center median is a raised island along the center of a street that improves visibility and encourages slower speeds.



TOWARDS 40
 SAFE MOBILITY IMPROVEMENTS
 DRAFT DESIGN - SUBJECT TO REVIEW AND SITE CONDITIONS

29a Avenue / 109 Street and 29 Avenue / 105 Street (Ermineskin / Keheewin)

C-6

SAFE MOBILITY
 PARKS AND ROADS
 CITY OPERATIONS

June 3, 2026

