

# Terwillegar Drive Expansion Construction Update

# Welcome!

Public Information Session  
April 2026

Edmonton

# Terwillegar Drive Expansion: Overview

- + Terwillegar Drive is a key north–south route in southwest Edmonton and an important link to 170 Street, which will become a future connection to Highway 19.
- + Due to significant growth in southwest Edmonton, this vital corridor exceeded its capacity causing congestion, delays, increased collisions, as well as the reduction in speed and reliability of transit services.
- + The corridor also poorly accommodates active transportation, such as walking and cycling.
- + To accommodate current and future needs, the City is constructing an integrated expansion plan for Terwillegar Drive.



Learn more by going to: [edmonton.ca/terwillegardrive](https://edmonton.ca/terwillegardrive)



# Terwillegar Drive Expansion: Program Purpose

- Major city-building initiative.
- Build out of roadway, transit and active transportation (walk, bike, roll) to safely and efficiently accommodate future needs.
- Help achieve the outcomes of the City Plan to accommodate a population of 2 million.
- Alleviate congestion.
- Improve access and connectivity for pedestrians and cyclists.
- Accommodate all users safely and efficiently.



Learn more by going to: [edmonton.ca/terwillegardrive](https://edmonton.ca/terwillegardrive)

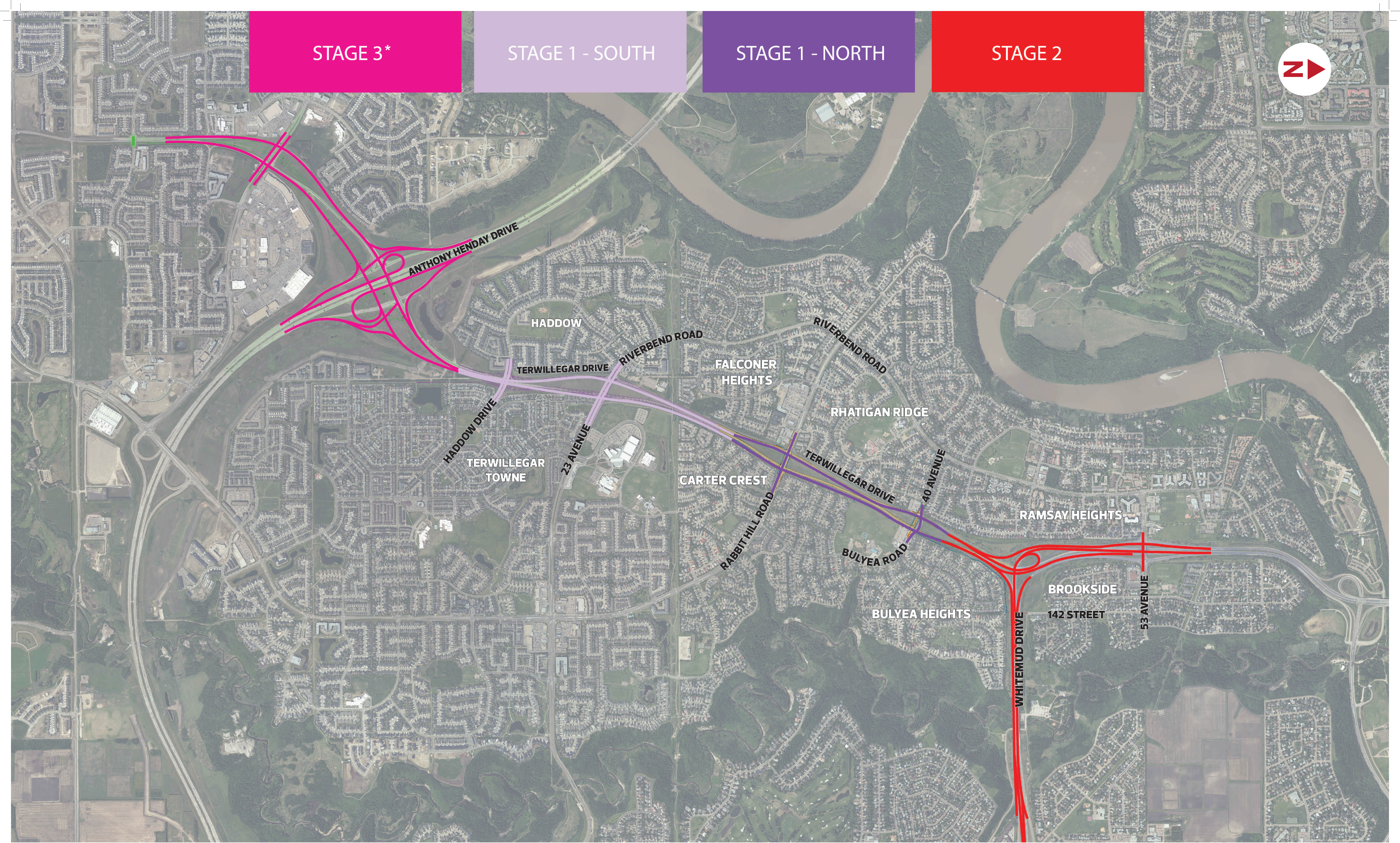
Edmonton

STAGE 3\*

STAGE 1 - SOUTH

STAGE 1 - NORTH

STAGE 2



# Program Stages

\* Final design to be determined