

## Public Notice – Emergency Response Plan during upcoming 12 Avenue west intersection closure

The City and Leducor are aware of community concerns regarding emergency vehicle access in and out of Twin Brooks during the upcoming [12 Avenue west intersection closure](#) starting in late May. Below are further details on how the City and Leducor are managing emergency access plans to ensure safe and reliable access remains in place.

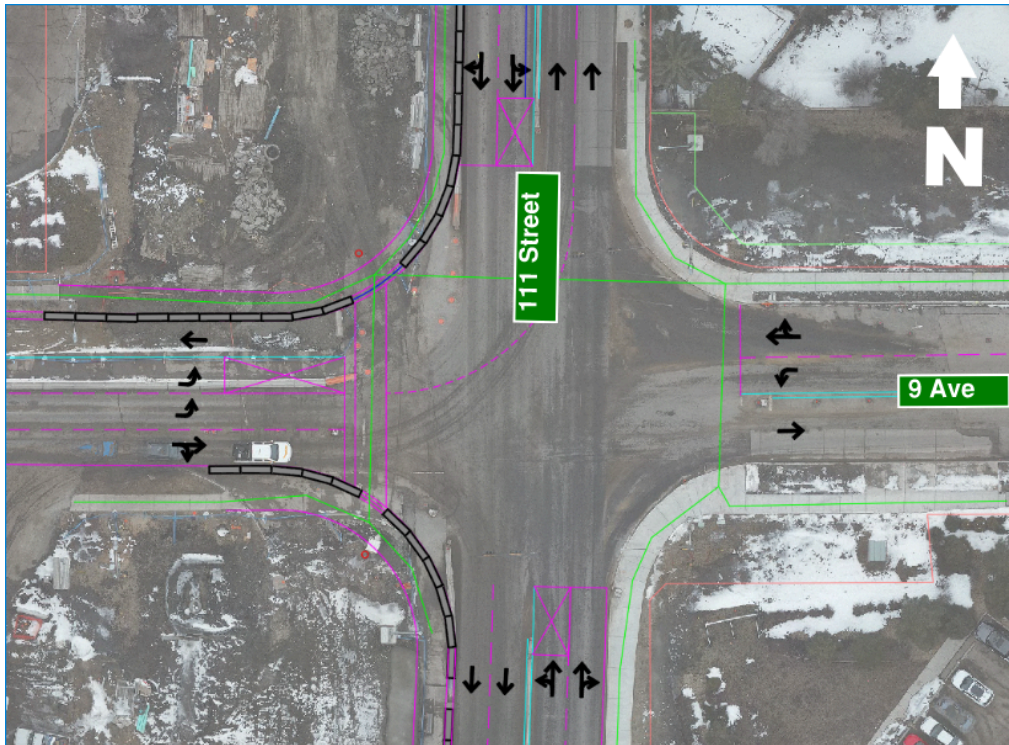
### 12 Avenue west closure - starting on/around May 24

- 12 Avenue west will be temporarily closed, for approximately 10 weeks, to allow critical construction work to proceed safely and efficiently.
- Emergency vehicle access will be available at all times (24/7) at the closed intersection.
- Emergency services will use 9 Avenue as the primary access for Twin Brooks; however, Leducor will maintain an access point for emergency vehicles (even during active excavation) through the closed intersection.
- Emergency access will need to shift within the construction zone depending on construction activities.
- Leducor will maintain an access point to accommodate emergency vehicles (an opening in the hard barriers), along with either a temporary access built off to the side of the construction zone or through the construction zone.
- "Construction access only" signage will be in place at the closed intersection to instruct emergency services on the access location, along with ongoing communication with emergency responders.

### Traffic flow at 9 Avenue west (during 12 Avenue west closure)

- Four traffic lanes will be open at 9 Avenue west
  - Two eastbound to northbound left-turn lanes out of Twin Brooks
  - One eastbound through/right-turn lane (southbound) out of Twin Brooks
    - The "no-right-on-red" turn movement (southbound) will be temporarily removed to support better traffic flow.
  - One westbound through lane into Twin Brooks to support traffic flow and reliable access for emergency vehicles. **See map below for details.**
- The Traffic Operations team will continue to monitor conditions and adjust signal timing or signage where possible.

**Map: 9 Avenue traffic configuration (during 12 Avenue west closure)**



### **Emergency Response Coordination**

- **During construction, primary emergency access is planned from the south via Anthony Henday Drive.**
- The City and Ledcor are in regular communication with ambulance services, Edmonton Fire Rescue Services and the Edmonton Police Service.
- Emergency services are proactively informed of all construction impacts and closures.
- To ensure public safety, emergency services utilize established protocols and mitigations when navigating lane closures and construction zones across the city.

### **In the event of a collision or stall along 111 Street/Blackmud Creek Bridge**

- Construction crews are prepared to work directly with emergency responders to manage incidents quickly and safely along constrained corridors when safe and feasible.
  - Whenever possible, emergency services will dispatch vehicles from the south via Anthony Henday Drive to avoid delays at the bridge.
- This includes flagging, temporarily holding or redirecting traffic and assisting with clearing the area.
- In certain areas, hard barriers have been replaced with smaller, movable directional panels, allowing emergency vehicles to navigate through traffic more easily, if

required.

### **Why full closures are necessary**

- A full closure at 12 Avenue west (followed by 9 Avenue west once 12 Avenue reopens) allows crews to complete the highest volume of work in the shortest timeframe, reducing the overall duration of disruption.
- The closures at 12 and 9 Avenue west are necessary for critical removals, civil drainage, ductbank and utility work, roadwork and trackwork.
- Crews will be working extended hours to accelerate progress wherever possible.
- Following this construction season, Ledcor does not anticipate any further full closures in the area.

### **For More Information**

#### **City of Edmonton**

(general project inquiries)

Visit: [edmonton.ca/capitalsw](https://edmonton.ca/capitalsw)

Email: [lrtprojects@edmonton.ca](mailto:lrtprojects@edmonton.ca)

Call: LRT Projects Information Centre at  
780-496-4874 (voicemail)

#### **Ledcor Group of Companies**

(construction-specific inquiries)

Email: [capitalinesouth@ledcor.com](mailto:capitalinesouth@ledcor.com)

Call: Capital Line South public inquiry line at  
780-540-7013 (voicemail)