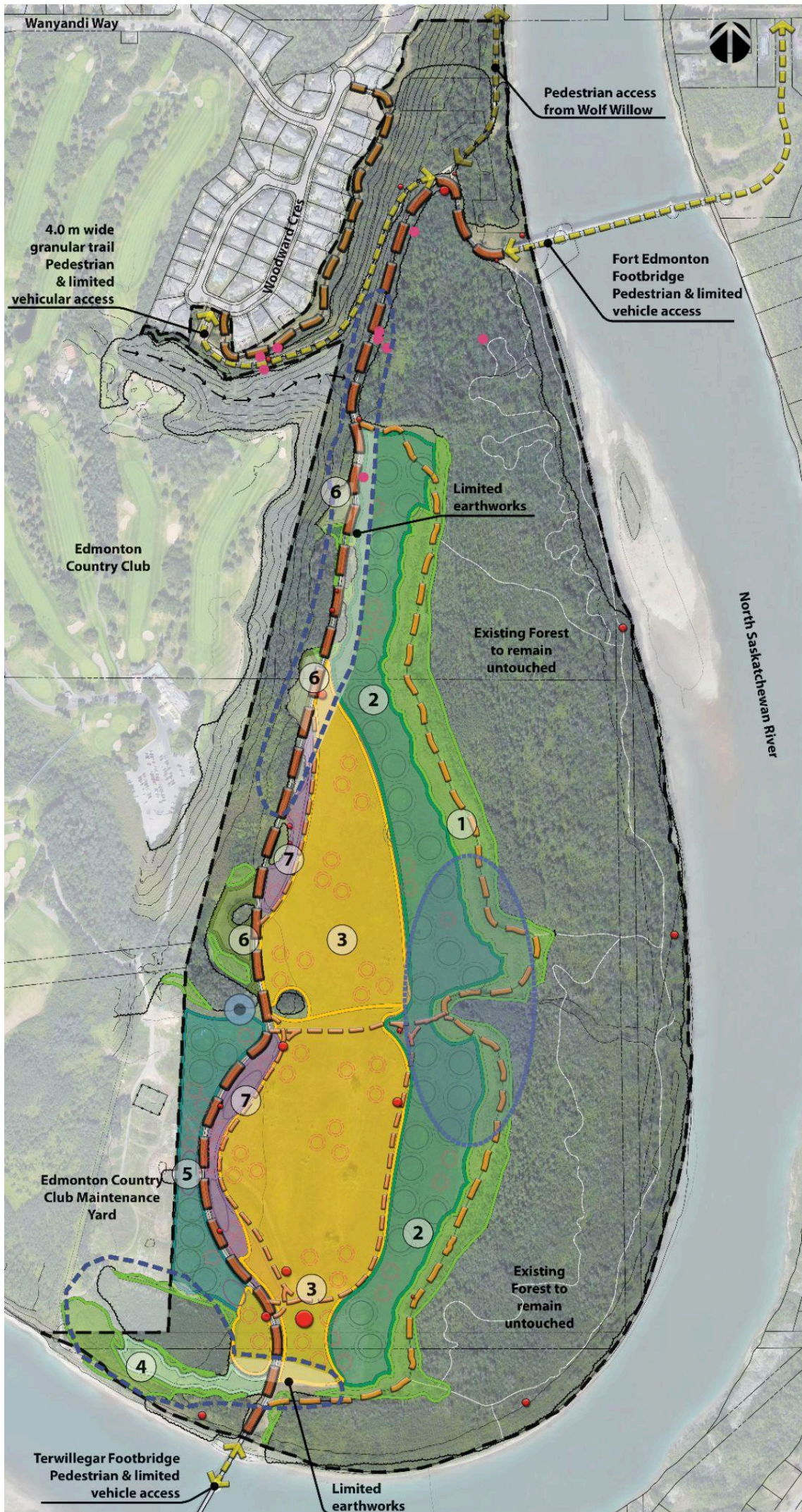


Draft Restoration Concept Design



Legend

- Park Boundary
- Existing Shared Use Paths
- Existing Natural/ Gravel Trails
- Future Meadow Trails (Master Plan)
- Future Amenity Locations (Master Plan)
- Existing Forest Natural Trails
- Location of Rare Plants
Sweet Cicely found within restoration area.
- Approximate location of known Archaeological Sites
- Plants of Interest: Yellow Lady Slipper / Wood Lily
Unique plants have been noted in this area & will be preserved. A Plant Survey will identify their locations and the plants will be protected by fencing to limit ground disturbance.
- Forest Planting Bed
Planting bed consisting mainly of trees but will include shrubs and wildflowers.
- Wildflower Planting Bed
Planting bed consisting mainly wildflowers plugs.
- Shrub Planting Module
Planting bed consisting mainly of shrubs.
- Areas of Limited Earthworks (white overlay)
Site preparation within the known archaeological site boundaries will limit ground disturbance. No intensive site preparation will take place to aid with the preservation of cultural artifacts located in these areas.

- 1** **AREA 1: Existing Natural Forest Regeneration (4.2ha)**
Area just east of the Existing Forest is currently naturally regenerating. Minimal intervention (noxious weed management) and let it continue to naturally regenerate.
- 2** **AREA 2: East Forest Restoration (10.1ha)**
The ultimate goal of this area is forest restoration. Intensive site preparation and weed management will be employed to allow establishment of native plant communities. A complete forest community will be established including wildflowers, shrubs & trees. Federal tree planting program grant can be used for forest restoration.
- 3** **AREA 3 North & South: Restoration of Prairie Meadow (11.1ha)**
The ultimate goal for this area is to restore native prairie vegetation in the open meadow. Intensive site preparation and weed management will be undertaken to aid with the prairie establishment. The area will be seeded with native grasses supplemented by wildflower planting modules.
- 4** **AREA 4: South West Forest Regeneration (10.1ha)**
This small meadow is currently regenerating with shrubs and trees. Minimal intervention (weed removal) is proposed, to allow it to continue to naturally regenerate into native forest.
- 5** **Area 5: West Forest Restoration (2.3ha)**
Area along the west property line and golf course storage area is an open disturbed landscape. Intensive site preparation will be employed to aid with native plant establishment. Forest restoration is the ultimate goal & a complete forest community consisting of some grasses, wildflowers, shrubs & tree will be planted.
- 6** **Area 6: North West Forest Restoration (.7ha)**
Restoration efforts in this area will concentrate on the disturbed open flat areas. Alternative site preparation techniques and weed management will be employed in this area. Forest restoration is the ultimate goal with a concentration on shrubs and wildflowers.
- 7** **Area 7: Shrub Transition Area (6440m²)**
Restoration efforts in this area will concentrate on creating a shrub transitional zone between the Aspen tree stand and the native prairie meadow.

ADVISE

Learn more about this project at:
edmonton.ca/JanReimerPark

SHARE YOUR VOICE
SHAPE OUR CITY

Edmonton