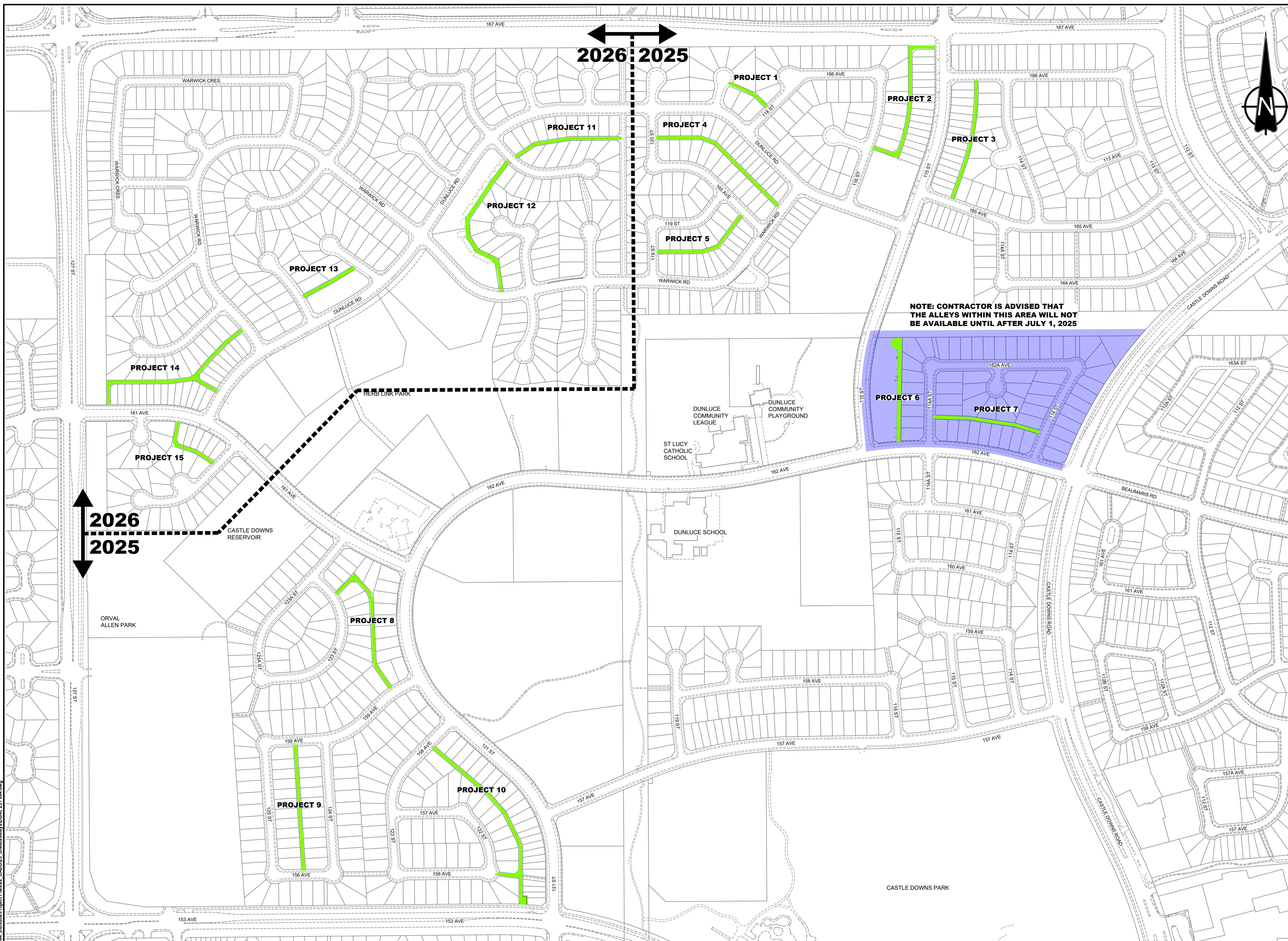


DETAIL LEGEND

- RESIDENTIAL ALLEY
- 100mm 10mm-LT ASPHALT
- 150mm 3-20 GRANULAR
- 175mm 3-63 GRANULAR
- BIAXIAL GEOGRID
- NON-WOVEN GEOTEXTILE
- PREPARED SUBGRADE



NOTE: CONTRACTOR IS ADVISED THAT THE ALLEYS WITHIN THIS AREA WILL NOT BE AVAILABLE UNTIL AFTER JULY 1, 2025

NOTE:
1. ALLEYWAY PHASING AND AVAILABILITY IS DEPENDANT ON ATCO RELOCATION SCHEDULE.

Jeremy Johnson / May 13, 2025 / C:\ASK\KAC\Projects\16504_Dunluce\Project Files\97_CADD\23_Sheets\Alleys\DUNL 251 004.dwg

Issues / Revisions					
Ltr.#	Date	Author	Review	Check	Description
A	MAY 21, 2025	JJ	NK	SM	ISSUED FOR TENDER
B					
C					

Consultant

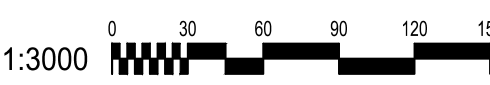



Job Number : 16504

FOR INFORMATION ONLY

Branch BUILDING GREAT NEIGHBOURHOODS

Dept INTEGRATED INFRASTRUCTURE SERVICE

Scale 1:3000 

Project	DUNLUCE ALLEY RENEWAL	
Location	127 ST TO CASTLE DOWNS RD 167 AVE TO 153 AVE	
Drawing Title	STAGING PLAN	
Drawing Number	DUNL 251 004	
Program No		Contract No 2502