

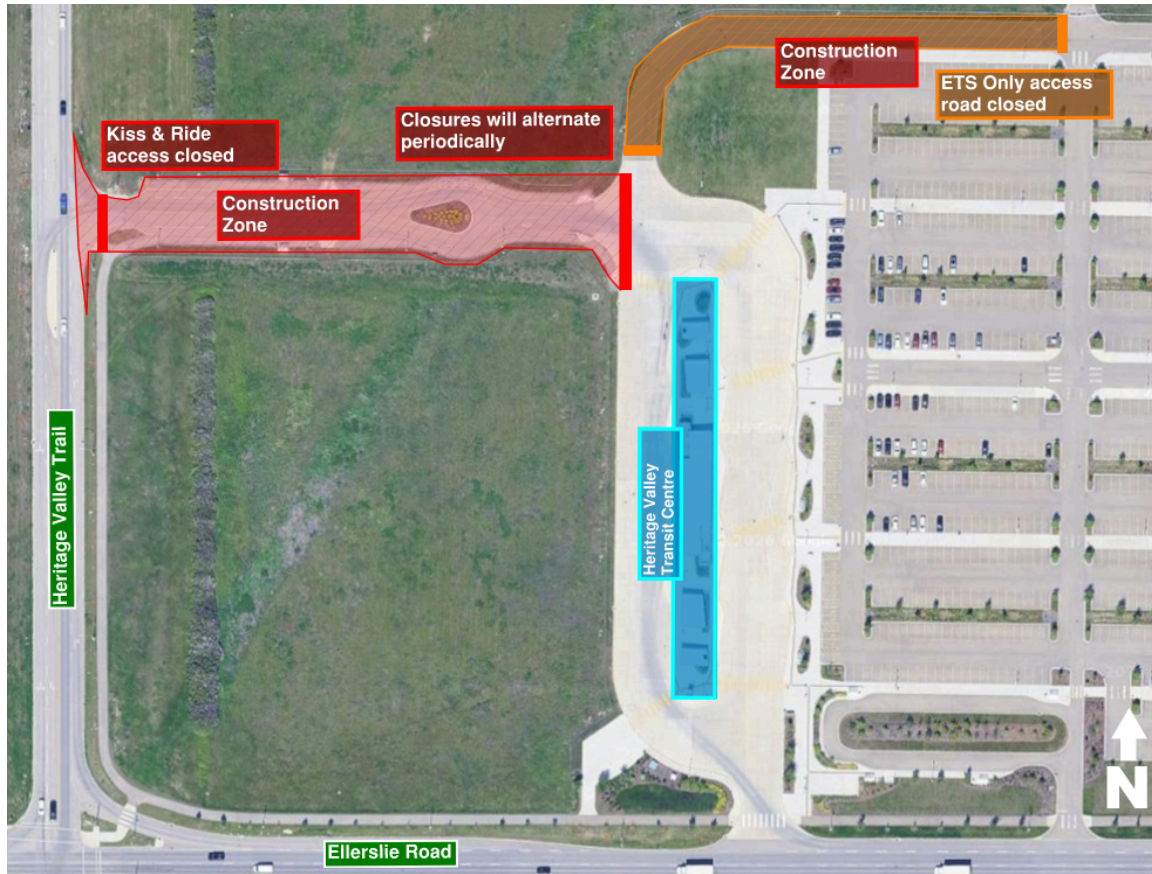
Construction Notice – Heritage Valley Transit Centre + Kiss & Ride Access Closures

Beginning **on/around June 24**, Ledcor will periodically close sections of the access points to the **Kiss & Ride entrance** (on Heritage Valley Trail) and the **ETS only access, north of Heritage Valley Transit Centre**, to accommodate utility and drainage installation for the future Heritage Valley North LRT Station.

These access closures will occur until the **end of 2026** and alternate periodically due to the phasing of construction work, with signage adjusted accordingly. When the Kiss & Ride entrance closes, motorists can access the Heritage Valley Transit Centre via the other entrances.

These closures have been communicated to ETS in advance and will not interrupt transit service.

Map 1: Heritage Valley Transit Centre and Kiss & Ride Access Closures



Traffic impacts

- Periodic access closures around the Heritage Valley Transit Centre, including Kiss & Ride and ETS only access.
- Construction signage and delineation devices will be installed along the temporary closures.

Other impacts

- Pedestrian and cyclist routes will be closed during the Kiss & Ride access closure, and signage and wayfinding will be installed. Temporary ramps will be used to ensure safe travel through the work zone.

For More Information

City of Edmonton (general project inquiries)

Visit: edmonton.ca/capitalsw

Email: lrtprojects@edmonton.ca

Call: LRT Projects Information Centre at 780-496-4874 (voicemail)

Ledcor Group of Companies (construction-specific inquiries)

Email: capitalinesouth@ledcor.com

Call: Capital Line South public inquiry line at 780-540-7013 (voicemail)