

Construction Notice - ATCO Pipeline Lowering Along Ellerslie Road

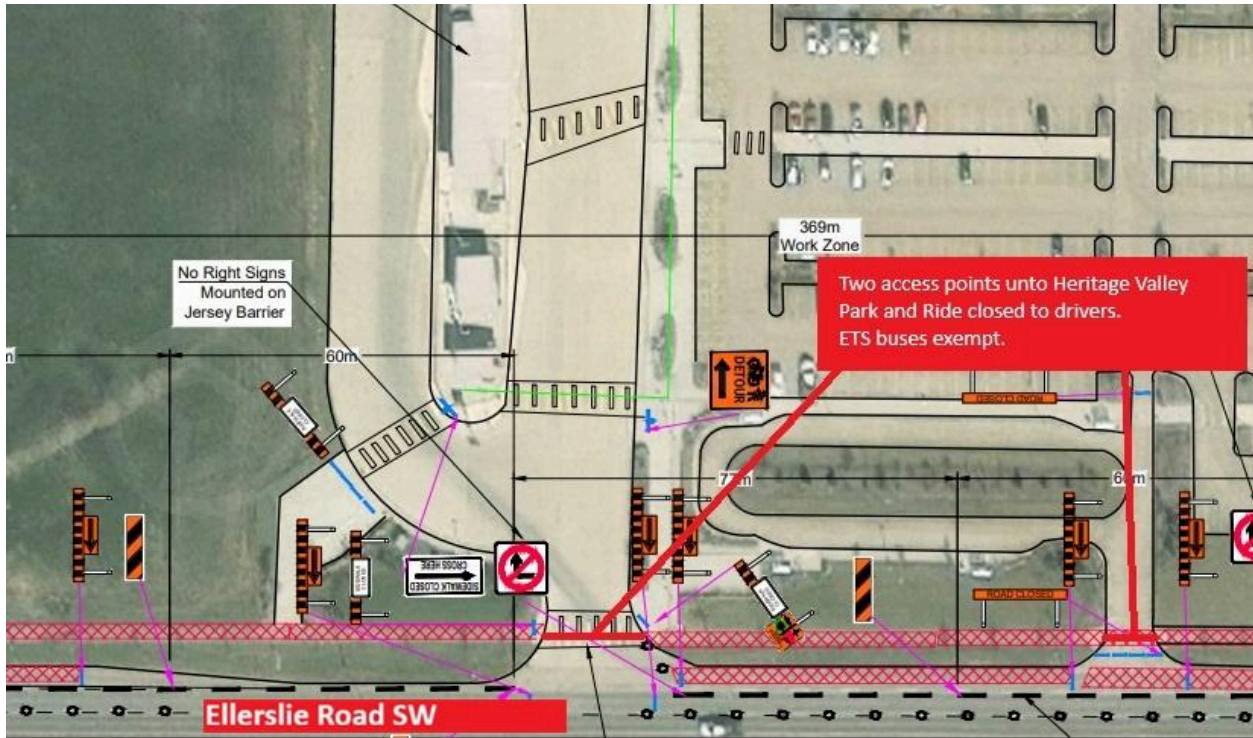
Beginning **on/around June 15**, ATCO Pipelines will implement temporary traffic and access changes along sections of Ellerslie Road to accommodate pipeline lowering as part of Capital Line South LRT construction. This work is expected to be **complete by August 15**.

During construction:

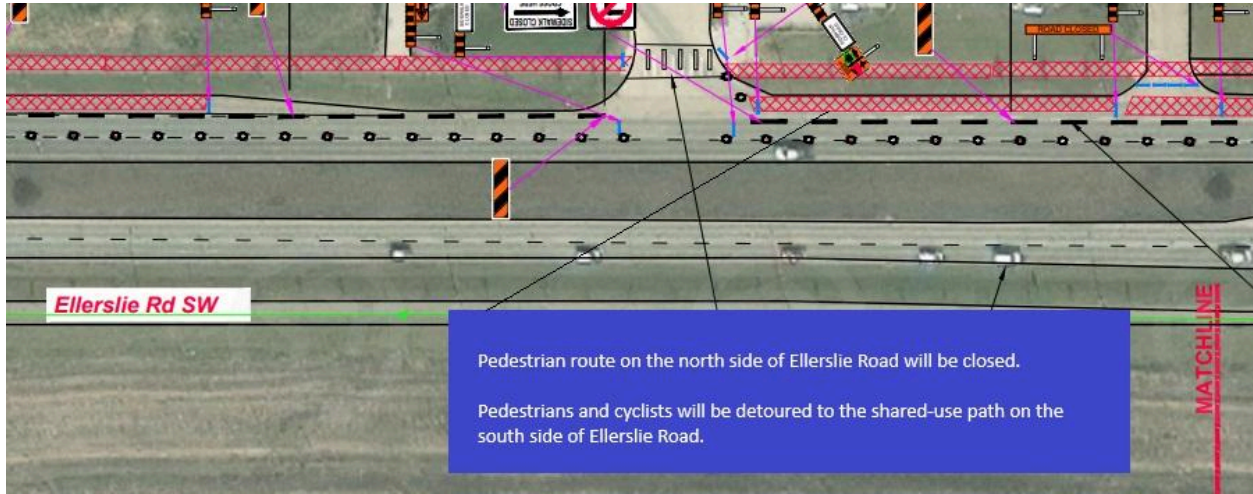
- Two westbound to northbound turn bays along Ellerslie Road, turning into the Heritage Valley Park and Ride between 127 Street and 135 Street, will be temporarily closed.
- **Drivers can continue to access the Park and Ride and transit centre via 127 Street and 135 Street.**
- The shared-use path on the north side of Ellerslie Road will be closed. Pedestrians and cyclists will be detoured to the shared-use path on the south side of Ellerslie Road.
- **There will be no impacts to transit service or transit centre operations.** ETS buses are exempt from these closures and can continue to access the facility as usual.

Please see the maps below for more information.

Map 1: Temporary Access Changes to Heritage Valley Park & Ride from Ellerslie Road



Map 2: Shared-use path detour at Ellerslie Road



Other Impacts

- Traffic control measures and signage will be in place to help guide motorists, pedestrians and cyclists safely through the area.
- Access will be maintained where possible, and construction schedules may be adjusted based on weather conditions and other factors.

For More Information

City of Edmonton (general project inquiries)

Visit: edmonton.ca/capitalsw

Email: lrtprojects@edmonton.ca

Call: LRT Projects Information Centre at 780-496-4874 (voicemail)

Ledcor Group of Companies (construction-specific inquiries)

Email: capitallinesouth@ledcor.com

Call: Capital Line South public inquiry line at 780-540-7013 (voicemail)