

2026 CHILD CARE SERVICES SURVEY (CLOSED-ENDED RESULTS)

Prepared by Corporate Research

MARCH 2026



SHARE YOUR VOICE
SHAPE OUR CITY

Edmonton



Background & Objectives

The City is proposing to reduce regulatory barriers to child care service development. Currently, the Zoning Bylaw lists child care services as a discretionary use in some residential zones and a permitted use in other residential zones. The City is proposing to make child care services a permitted use in all residential zones and add floor area and location limitations to support the integration of child care services within neighbourhoods.

Survey Objectives

To inform these proposed changes, the City conducted an online survey among Edmonton residents during early 2026. The survey objectives were to:

- Determine level of agreement or disagreement with the proposed changes.
- Understand the demographics of those in agreement and those opposed.
- Understand the potential benefits of the proposed changes.
- Understand the potential consequences of the proposed changes.
- Identify any additional considerations not captured in the proposals.

Methodology

Between January 14 and February 4, 2026, a total of **2,143** Edmonton Insight Community (EIC) members responded to the online Child Care Services survey, sent via email.

Additionally, **224** respondents accessed the survey through the open link, which was shared on the survey webpage and distributed via email to community and stakeholder organizations*.

This report contains closed-ended results for all respondents (**n=2,367**).

**Edmonton Federation of Community Leagues (EFCL), Edmonton Community Leagues, Business Improvement Areas (BIAs), the Chamber of Commerce, the WAVE Committee, the Council for Early Learning and Care, 9 non-profit organizations that provide family services, 10 small-scale child care facilities included in a traffic and parking study, and school boards.*

As this is a non-random online survey, a margin of error is not reported for these results. However, if a probability sample had been used, results for a random sample of 2,367 would be accurate to +2.0 percentage points (19 times out of 20).

Any demographic or other sub-groups results framed as “more”, “less” “most” or “least likely” have been identified during analysis as being 10%+ higher/lower than the aggregate total. The framing of sub-group differences does not denote statistical significance; instead, it highlights directional differences that may warrant attention and/or study.

A person is sitting at a desk, working on a laptop. To the left of the laptop is a tablet displaying text. To the right is a red mug. The person is wearing a dark jacket and a watch. The background is a blurred office or home workspace. The entire image is overlaid with a semi-transparent blue filter. On the left side, there is a vertical line with a green-to-orange gradient.

Summary of Findings

Summary of Findings

Current Landscape & Usage

- Among Edmonton residents surveyed, the majority (58%) live near a child care facility. Respondents living near a child care facility are more likely to report benefits (53%) than challenges (29%) from that experience.
- Most respondents (63%) do not currently use or anticipate (within next 5 years) needing child care services.
- Respondents who currently use child care services rely heavily on personal vehicles for drop-off and pick-up (92%), followed by walking (45%) and biking (25%).

Policy Proposals

- Just over one third of respondents agree (somewhat or strongly) with each policy proposal; reducing *on-site parking* (35%) and *utilizing street parking* (36%) draw similar levels of support, while the *combined* approach is supported by slightly fewer (32%).
 - Respondents who are younger (35 or under), anticipating future child care use, residing in Central Edmonton or 2SLGBTQIA+ are more likely to agree with *reducing on-site parking*, *utilizing street parking* and a *combination* of both proposals.
 - Gender diverse respondents are more likely to agree with the reducing on-site parking proposal and with the combination of both proposals
 - Current child care users are more likely to agree with the proposal to reduce on-site parking.
- Greater flexibility in site design (39-42%) and more variety in child care service locations/types (37%) are the most widely recognized potential benefits.
- On-street parking impacts on neighbouring residents (62-66%) and traffic safety (61-66%) in residential areas are the main concerns across proposals.
- Nearly one third (27-29%) see no potential benefits across all three proposals. Fewer (6-9%) see no potential challenges.

A person is sitting at a desk, working on a laptop. To the left of the laptop is a tablet displaying a document. To the right is a red mug. The person is wearing a dark jacket and a watch. The background is a blurred office or home workspace. The entire image is overlaid with a semi-transparent blue filter. On the left side, there is a vertical line with a green-to-orange gradient.

Detailed Results

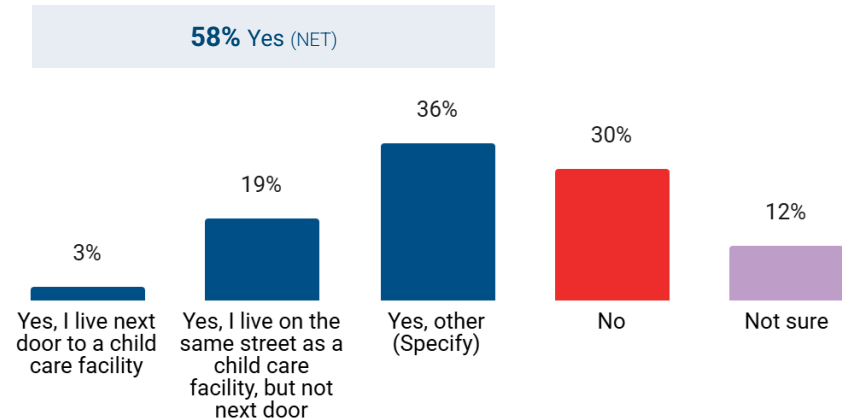
Current Landscape & Usage

Live Near Child Care Facility in Edmonton

Nearly three fifths (58%) of Edmonton residents (n=2,313) surveyed report living near a child care facility: 19% on the same street (but not next door), 3% immediately next door, and 36% nearby in another manner.

Three in ten (30%) report not living near a child care facility, while 12% are unsure.

Do you currently live near a child care facility in the city of Edmonton?



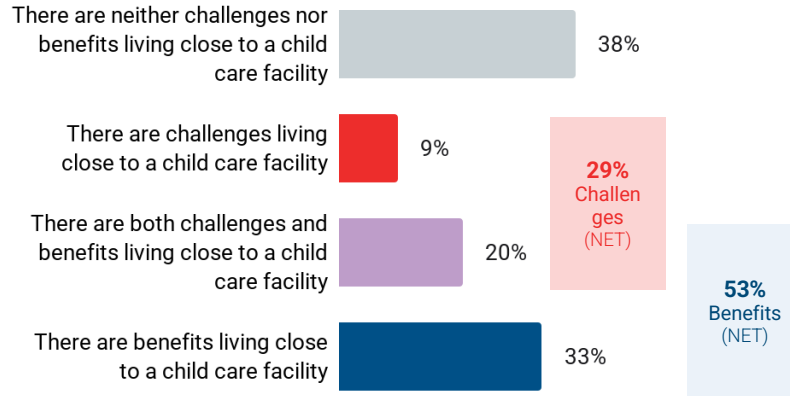
Base: Reside in Edmonton
[n=2,313]

Experience Living Near a Child Care Facility

Among residents living near a child care facility in Edmonton (n=1,334), about half (53%) report that there are benefits.

Many (38%) report neither benefits nor challenges, while about three in ten (29%) report experiencing challenges.

What is your experience living close to a child care facility?



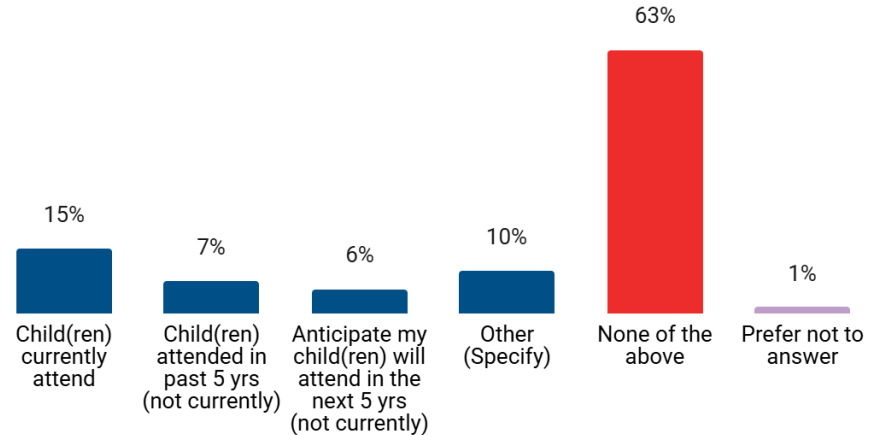
Base: Currently resides near child care facility in Edmonton [n=1,334]

Usage of Child Care Services in Edmonton

Among all respondents (n=2,367), nearly two thirds (63%) have no current or anticipated, and had no past need for child care services (within the past 5 years) in Edmonton.

About one in six (15%) have children currently attending a child care facility, 7% have children who attended within the past five years and 6% anticipate their children will attend within the next five years.

Which of the following describe your usage of child care services in the city of Edmonton?
Select all that apply.



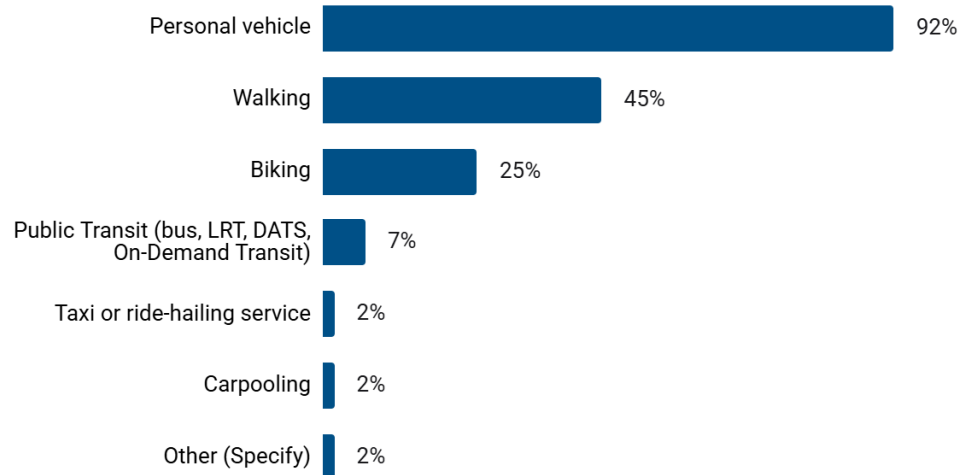
Base: All respondents
[n=2,367]

Transportation Modes for Drop-Off and Pick-Up

Among those whose children attend or have attended a child care facility in Edmonton in the past five years (n=523), a personal vehicle is/was the most common mode of transportation for drop-off and pick-up, used by 92%.

Walking is the second most common form of transportation to and from child care (45%), followed by biking (25%). Fewer use public transit (7%), while carpooling, taxi or ride-hailing services, and other modes are each used by 2%.

What form(s) of transportation do or did you use to drop-off and pick-up your child(ren) at the child care facility? Select all that apply.



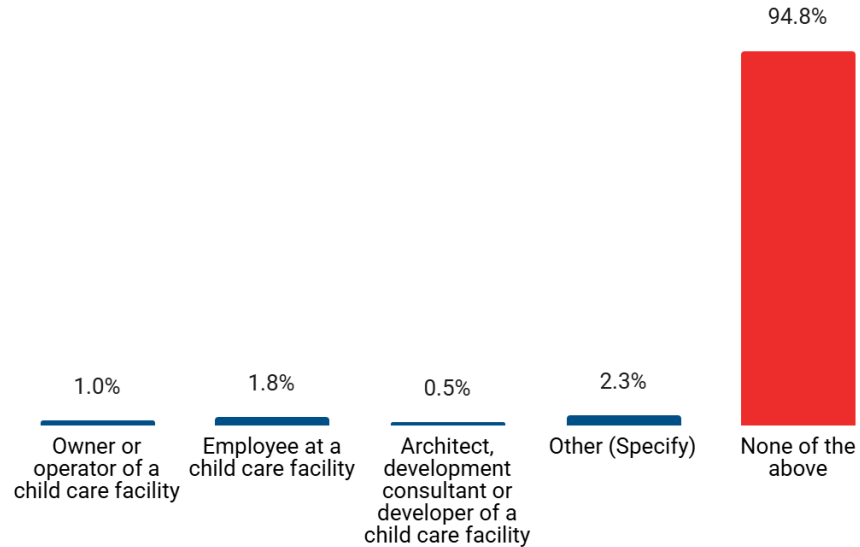
Base: Child(ren) attends or attended (within past 5 years) a child care facility in Edmonton [n=523]

Developing or Running Child Care Services in Edmonton

The vast majority (94.8%) have no involvement in developing or running child care services in Edmonton.

Of those with some involvement, 2.3% selected other, 1.8% are employees at a child care facility, 1.0% are owners or operators, and 0.5% are architects, development consultants, or developers of a child care facility.

Does any of the following apply to you with regard to developing or running a child care service in the city of Edmonton? Select all that apply.



Base: All respondents
[n=2,367]



Detailed Results

Proposal 1: Reducing On-Site Requirements

Reducing On-Site Requirements: Agreement

Respondents were first shown a scenario with reduced on-site parking requirements (to 1 space for every 10 children; see Figure 1).

About one in three (35%) somewhat or strongly agree and four in ten (42%) somewhat or strongly disagree, with about one in five (18%) neutral and 5% are unsure. Nearly half (45%) currently using child care services in Edmonton somewhat or strongly agree.

The following subgroups are **most** likely to agree (% somewhat+strongly):

- Anticipate using Edmonton child care in next 5 yrs (60%)
- Aged 35 or under (57%)
- Live in Central Edmonton (53%)
- 2SLGBTQIA+ (50%)
- Gender diverse (48%)

Base: All respondents
[n=2,367]

Overall, what is your level of agreement with reducing the pick-up and drop-off requirement to 1 space for every 10 children?

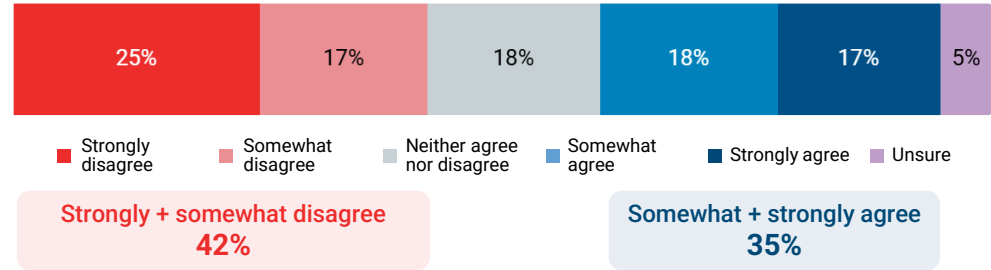
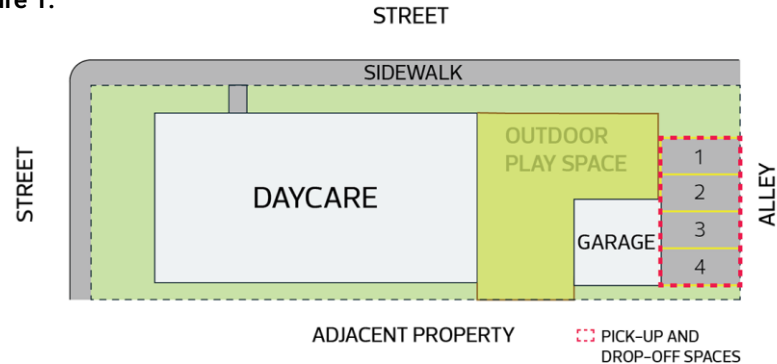


Figure 1.



Reducing On-Site Requirements: Potential Benefits

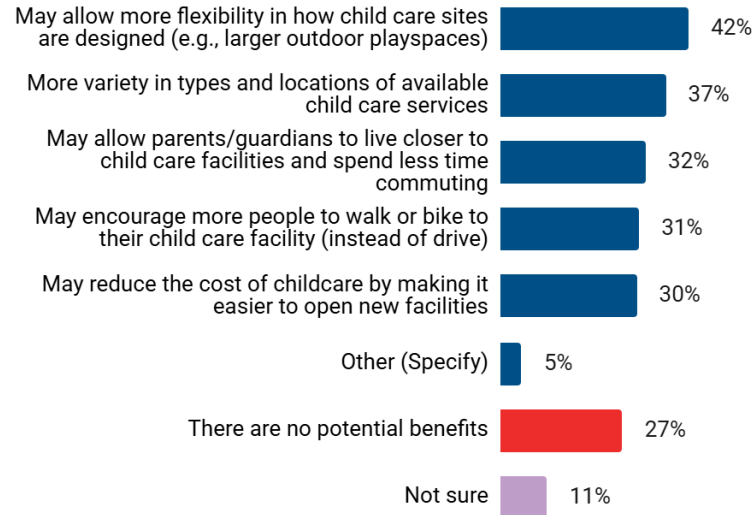
Among the potential benefits identified, greater flexibility in how child care sites are designed is the most commonly cited, noted by about two in five (42%).

Over a third (37%) cite more variety in types and locations of available child care services, and about one in three cite the potential for parents and guardians to live closer to facilities (32%), encouraging more walking or biking (31%), or potential cost reductions.

About one in four (27%) see no potential benefits while 11% are unsure.

Base: All respondents
[n=2,367]

What are potential benefits of reducing the pick-up and drop-off requirement to 1 space for every 10 children? Choose all that apply.

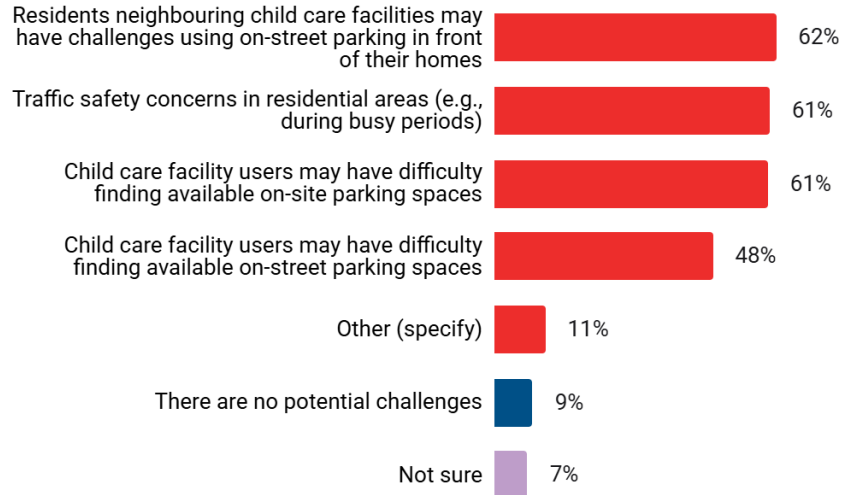


Reducing On-Site Requirements: Potential Challenges

Challenges for neighbouring residents using on-street parking (62%), traffic safety concerns in residential areas (61%), and difficulty for facility users finding on-site parking (61%) are the top potential challenges identified. About half (48%) cite difficulty finding on-street parking for child care users.

About one tenth (9%) see no potential for challenges, while 7% are unsure.

What are potential challenges of reducing the pick-up and drop-off requirement to 1 space for every 10 children? Choose all that apply.



Base: All respondents
[n=2,367]

A person is sitting at a desk, working on a laptop. To the left of the laptop is a tablet displaying a document. To the right is a red mug. The person is wearing a dark jacket and a watch. The background is a blurred office or home workspace. The entire image is overlaid with a semi-transparent blue filter. On the left side, there is a vertical line with a color gradient from green at the top to orange at the bottom.

Detailed Results

Proposal 2: Utilizing Street Parking

Utilizing Street Parking: Agreement

Next, respondents were shown a scenario where street parking is utilized (allowing up to half of the pick-up and drop-off spaces to be located on the street, where street parking is available; see Figure 2).

Similar proportions either somewhat or strongly agree (36%) or somewhat or strongly disagree (42%) with this proposal.

The following subgroups are **most** likely to agree (% somewhat+strongly):

- Anticipate using Edmonton child care in next 5 yrs (54%)
- Aged 35 or under (54%)
- Live in Central Edmonton (49%)
- 2SLGBTQIA+ (49%)

Base: All respondents
[n=2,367]

Overall, what is your level of agreement with allowing street parking to meet up to half of the pick-up and drop-off needs?

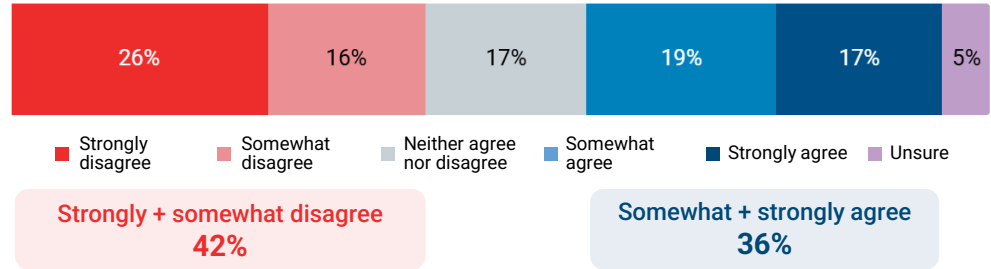
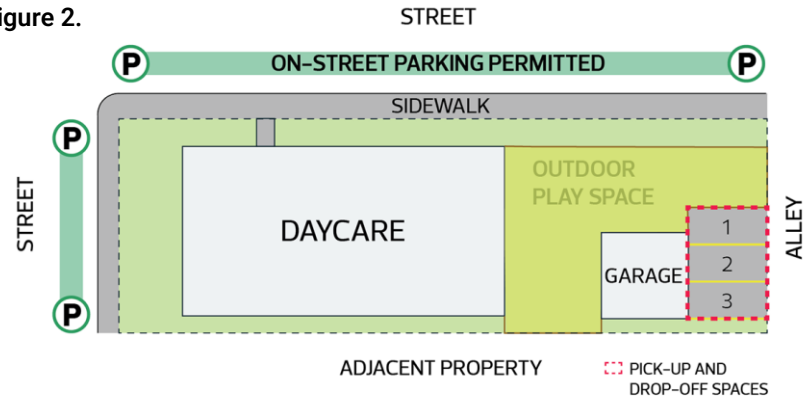


Figure 2.



Utilizing Street Parking: Potential Benefits

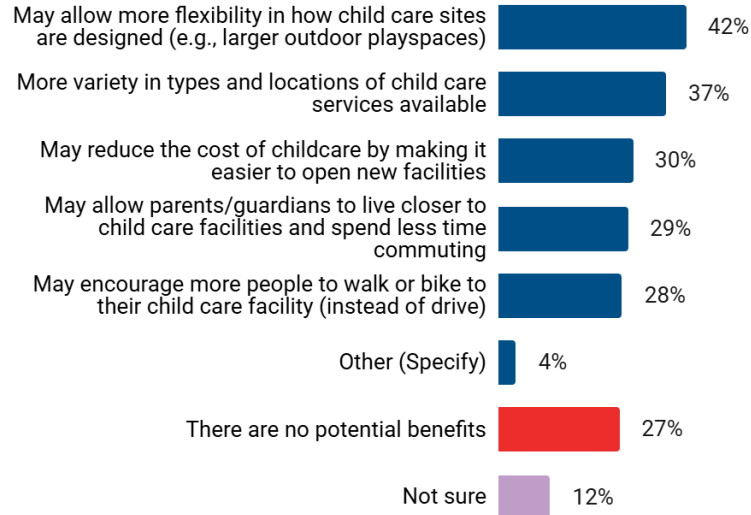
Greater flexibility in how child care sites are designed is the most commonly cited potential benefit, noted by about two in five (42%).

Over a third (37%) cite more variety in types and locations of available child care services, 30% potential cost reductions, 29% potential for parents and guardians to live closer to facilities and 28% encouraging more walking or biking. About one in four (27%) see no potential benefits while 12% are unsure.

Respondents under 35 years of age and those identifying as 2SLGBTQIA+ are more likely to identify potential benefits.

Base: All respondents
[n=2,367]

What are potential benefits of allowing street parking to meet up to half of the pick-up and drop-off needs? Choose all that apply.



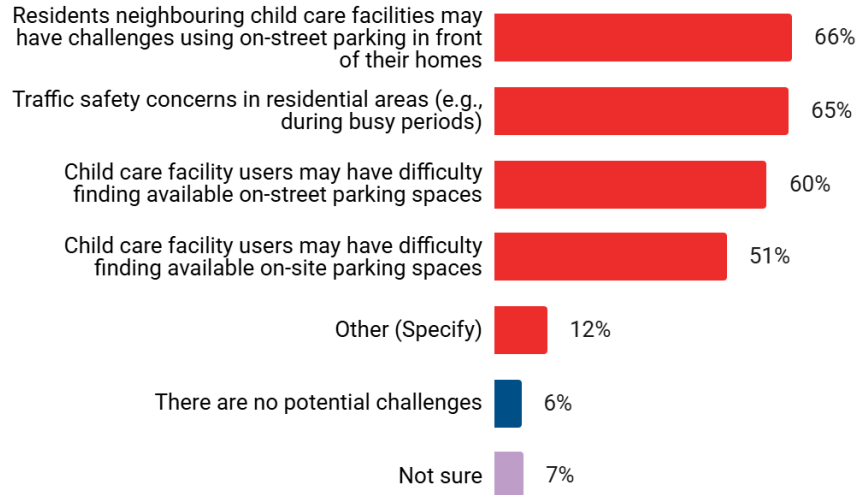
Utilizing Street Parking: Potential Challenges

Challenges for neighbouring residents using on-street parking (66%) and traffic safety concerns in residential areas (65%) are the top potential challenges identified, each cited by about two thirds of respondents.

Three in five (60%) cite difficulty for facility users finding on-street parking, and about half (51%) cite difficulty finding on-site parking.

About one in twenty (6%) see no potential challenges, while 7% are unsure.

What are potential challenges of allowing street parking to meet up to half of the pick-up and drop-off needs? Choose all that apply.



Base: All respondents
[n=2,367]

A person is sitting at a desk, working on a laptop. There is a tablet to the left of the laptop and a red mug to the right. The person is wearing a dark jacket and a watch. The background is a blurred office setting. The entire image has a blue overlay.

Detailed Results

Proposal 3: Combined Approach

Combined Approach: Agreement

Next, respondents were asked to indicate their level of agreement with implementing both proposals (reducing on-site parking and allowing available street parking to meet half of needs; see Figure 3).

About one third (32%) somewhat or strongly agree, while nearly half (44%) somewhat or strongly disagree with a combination of proposals 1 and 2 (17% are neutral and 6% are unsure).

The following subgroups are **most** likely to agree (% somewhat+strongly):

- Anticipate using Edmonton child care in next 5 yrs (46%)
- Aged 35 or under (53%)
- Gender diverse (48%)
- Live in Central Edmonton (47%)
- 2SLGBTQIA+ (46%)

Base: All respondents
[n=2,367]

Overall, what is your level of agreement with a combination of reducing the on-site pick-up and drop-off requirement and allowing available street parking to meet up to half of the pick up and drop-off needs?

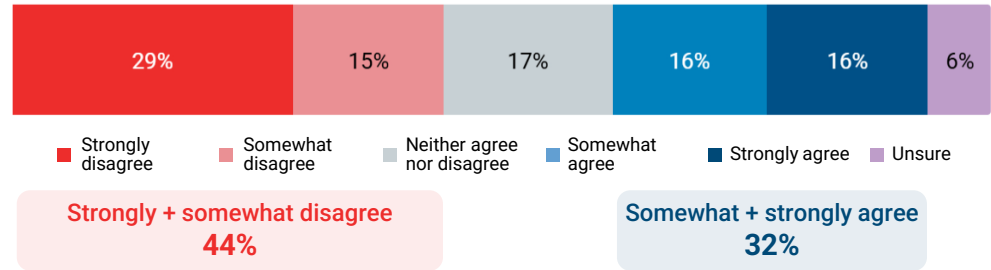
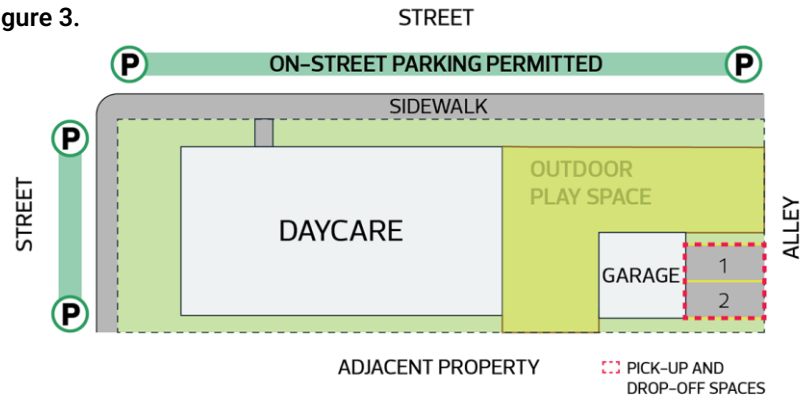


Figure 3.



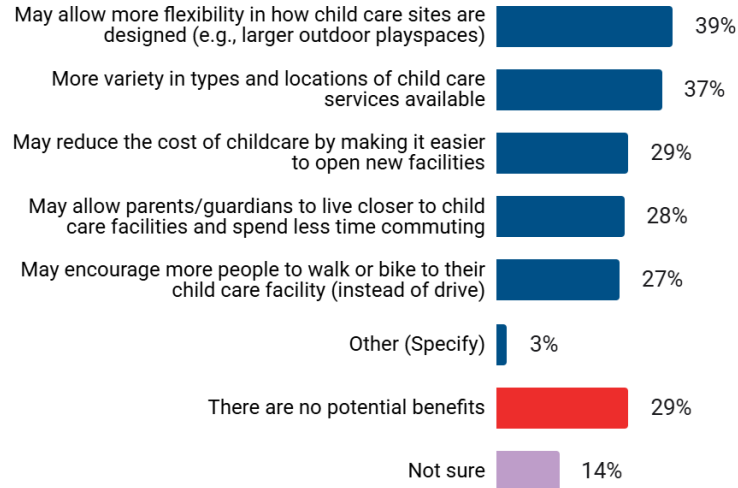
Combined Approach: Potential Benefits

Greater flexibility in how child care sites are designed is the most commonly cited potential benefit of the combined approach, noted by about two in five (39%), follow by over a third (37%) citing more variety in types and locations of available child care services.

About three in ten cite potential cost reductions (29%), potential for parents/guardians to live closer to facilities (28%), and encouraging more walking or biking (27%).

Another 29% see no potential benefits, while 14% are unsure.

What are potential benefits of BOTH reducing the on-site pick-up and drop-off requirement and allowing available street parking to meet some of the pick up and drop-off needs? Choose all that apply.



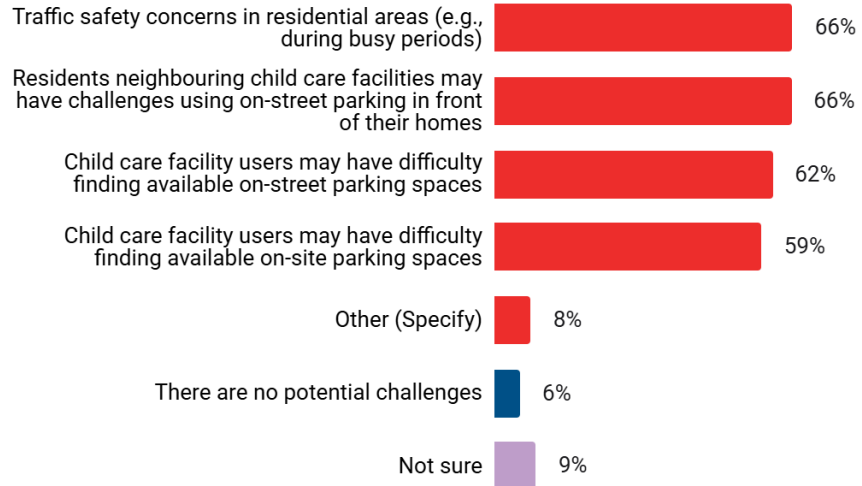
Base: All respondents
[n=2,367]

Combined Approach: Potential Challenges

Traffic safety concerns in residential areas (66%) and challenges for neighbouring residents using on-street parking (66%) are the top potential challenges of the combined approach.

Nearly as many (62%) cite difficulty for facility users finding on-street parking, and about three in five (59%) cite difficulty finding on-site parking. Few (6%) see no potential challenges, while 8% indicated other and 9% are unsure.

What are potential challenges of BOTH reducing the on-site pick-up and drop-off requirement and allowing available street parking to meet some of the pick up and drop-off needs? Choose all that apply.



Base: All respondents
[n=2,367]



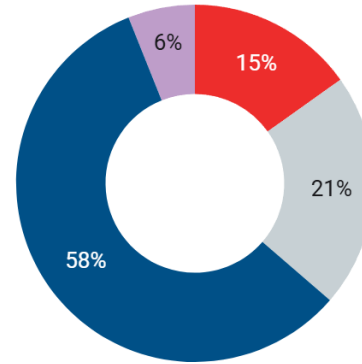
Detailed Results
Development Proposals

Impact of Proposed Changes on Development

The majority of owners and/or operators, architects, development consultants and developers of child care facilities (n=33) say that these proposed changes would make it easier overall to develop child care facilities in Edmonton.

Fewer than one in six (15%) say these changes would make development more difficult, while about one in five (21%) are neutral. 6% are unsure how this would impact development of child care facilities in Edmonton

In your opinion, how would the proposed changes to the on-site pick up and drop off space requirement impact the development of child care facilities in the city?

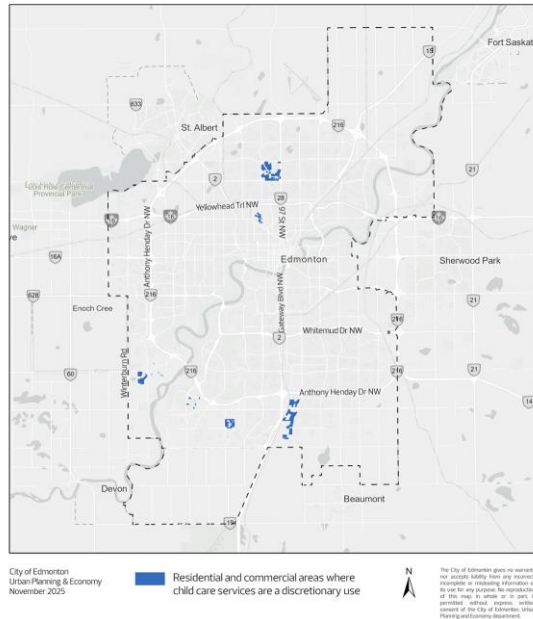


- Make it more difficult overall to develop child care facilities
- The proposed changes would not make it easier or more difficult to develop child care facilities
- Make it easier overall to develop child care facilities
- Not sure

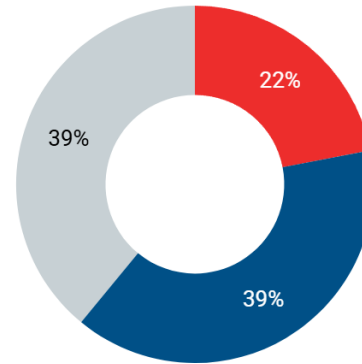
Base: Owners/operators and architects/development consultant/developers of child care facilities [n=33]

Support For Permitted Use in Specific Areas

Figure 4.



In the residential and commercial areas identified on the map above, should child care services be changed to a permitted use?



- No, should remain a discretionary use
- Yes, should be changed to a permitted use
- Not sure / No opinion

About four in ten (39%) of architects, development consultants and/or developers of child care facilities of child care facilities, along with those residing in relevant neighbourhoods, (n=41) support changing child care services in these areas to permitted use.

Another 39% are not sure, while 22% say it should remain a discretionary use.

Base: Architects/development consultant/developers of child care facilities and those residing in neighbourhoods identified on map (Ambleside, Blatchford, Greisbach, Paisley, River's Edge, Stillwater, The Orchards in Ellerslie, Uplands) [n=41]

A person is sitting at a desk, working on a laptop. To the left of the laptop is a tablet displaying a document. To the right is a red mug. The person is wearing a dark jacket and a watch. The background is a blurred office or home workspace. The entire image is overlaid with a semi-transparent blue filter. On the left side, there is a vertical line with a color gradient from green to red.

Survey Demographics

Survey Demographics

AGE	%
Under 18	<1%
18-24	1%
25-34	9%
35-44	26%
45-54	15%
55-64	17%
65-74	23%
75+	8%
Prefer not to answer	<1%

GENDER	%
Woman	57%
Man	39%
Non-binary	2%
Transgender	1%
Two-spirit	<1%
Prefer not to answer	2%

HOUSEHOLD INCOME	%
Under \$30,000	5%
\$30,000 to \$59,999	11%
\$60,000 to \$99,999	22%
\$100,000 to \$149,999	23%
\$150,000 and over	27%
Prefer not to answer	12%

IDENTITY GROUP	%
Persons with disabilities	11%
Born outside of Canada	9%
Racialized / visible minority	9%
2SLGBTQIA+	6%
Indigenous	3%
New to Canada (less than 5 years)	1%
Other (Specify)	6%
None of the above	60%
Prefer not to answer	<1%

REGION	%
Northwest	19%
Northeast	14%
Central	16%
Southwest	30%
Southeast	18%
Not sure	2%
Prefer not to answer	1%

YEARS IN EDMONTON	%
Less than 1 year	<1%
1 to less than 3 years	1%
3 to less than 5 years	3%
5 to less than 10 years	6%
10+ Years	90%
Prefer not to answer	1%

Base: All respondents
[n=2,367]

Have questions?
We're here to help!

Email: research@edmonton.ca



edmonton.ca/surveys



edmonton.ca/insightcommunity

Corporate Research is a centralized team that supports all market research and public opinion research work for the entire organization.

Our team **(1)** provides full-service market research & public opinion research consultancy services; **(2)** manages corporate tools such as the Edmonton Insight Community (the City's online survey panel of 25,000 Edmontonians); **(3)** provides education and training on research best practices; and **(4)** advances corporate research standards.

We utilize statistically relevant methodologies, providing robust insights and support unbiased data driven decision making. Online/phone/mail-in/intercept surveys and focus group discussions are the most commonly used research methods and techniques by the City.



Corporate Research is a corporate member of the Canadian Research Insights Council (CRIC), committing to ethical, high-quality research. Our practices are aligned with industry-leading standards, including the ICC/ESOMAR Code & CRIC's Public Opinion Research Standards.