

Wayfinding Signage

River Valley Trail System January 2014



New Option #1

Identification Signage Applications

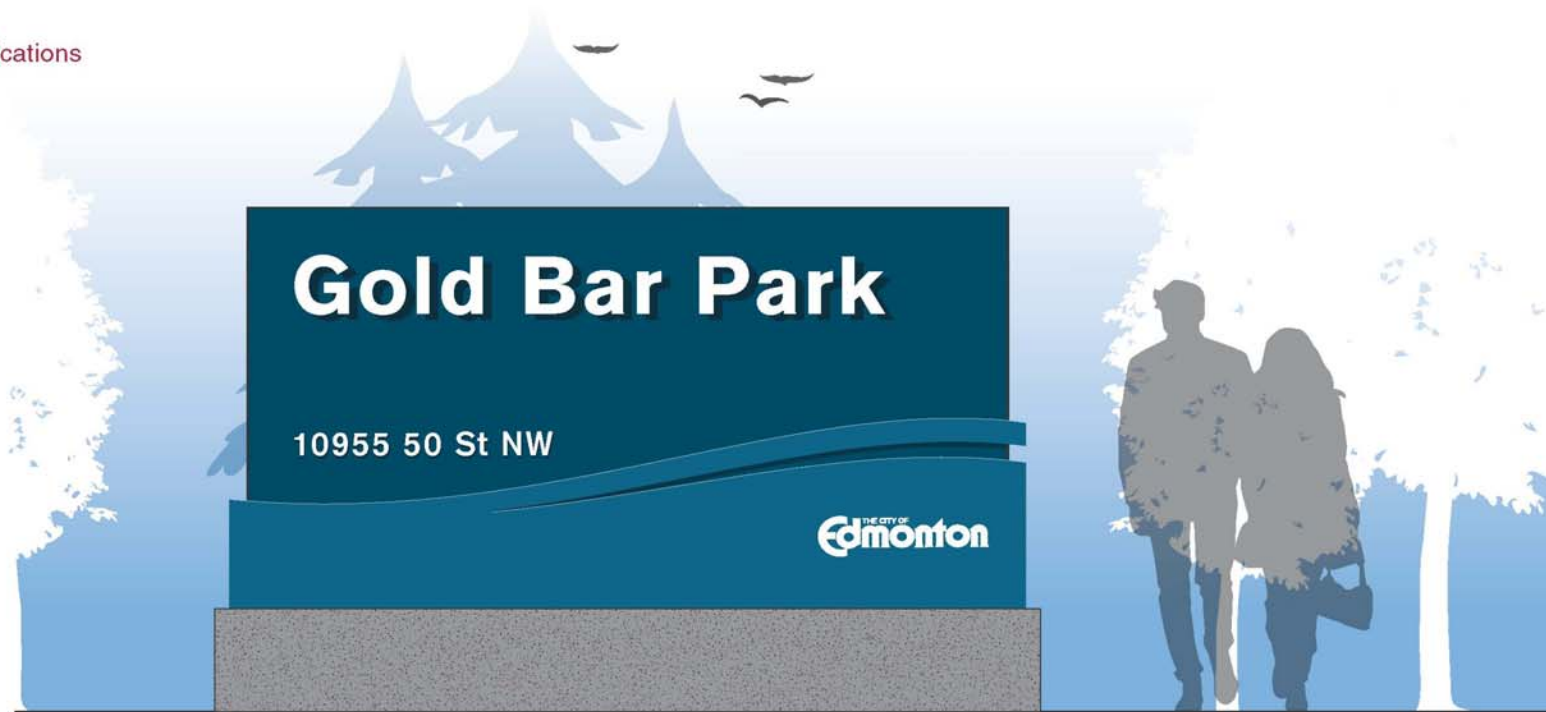
Main Park Identification

Entrance identification sign selection dictated by park size.

Dimensional letters, numbers and wave add visual interest and depth on primary and secondary applications.

Metal sign face and concrete structure, or metal posts.

Tertiary application reflects painted text and wave.



Primary Identification



Secondary Identification



Tertiary Identification

New Option #1

Information and Orientation Hub

Scale and presence should be an obvious landmark.

One per park located at a key pedestrian gathering point, such as the parking lot.

Opportunity to provide detailed information prior to the user's journey.

Metal sign face and concrete structure.



Primary Information Hub

Front View

Side View

Contents:

- › Park Map/Name
- › Symbols representing activities/ regulations within the park
- › Park code of conduct
- › Paws for Parks initiative

BEVERLY HEIGHTS



River Valley System

Edmonton Area Parks

Hermitage
Rundle
Dawson
Louise McKinney
Riverside
Irene Parby
Government House
Victoria
Buena Vista
Sir Wilfrid Laurier

PARKLAND COUNTY
LEDUC COUNTY
DEVON



Legend

- | | | |
|-----------------|-----------------|-------------------|
| Non Paved Trail | Emergency Phone | Washrooms |
| Paved Trail | Picnic Site | Drinking Fountain |
| Primary Trail | Parking Lot | Playground |
| Distance Marker | Boat Launch | Dogs Off-Leash |

Capilano Footbridge

TRAIL 0.3 km

TRAIL 1.0 km

NORTH SASKATCHEWAN RIVER

RUNDLE HEIGHTS

Capilano Park

Gold Bar Park

50 STREET

Downtown Edmonton



P

911

1

2

3

4

TRAIL 0.4 km

TRAIL 0.6 km

TRAIL 0.4 km

TRAIL 0.6 km

TRAIL 0.8 km

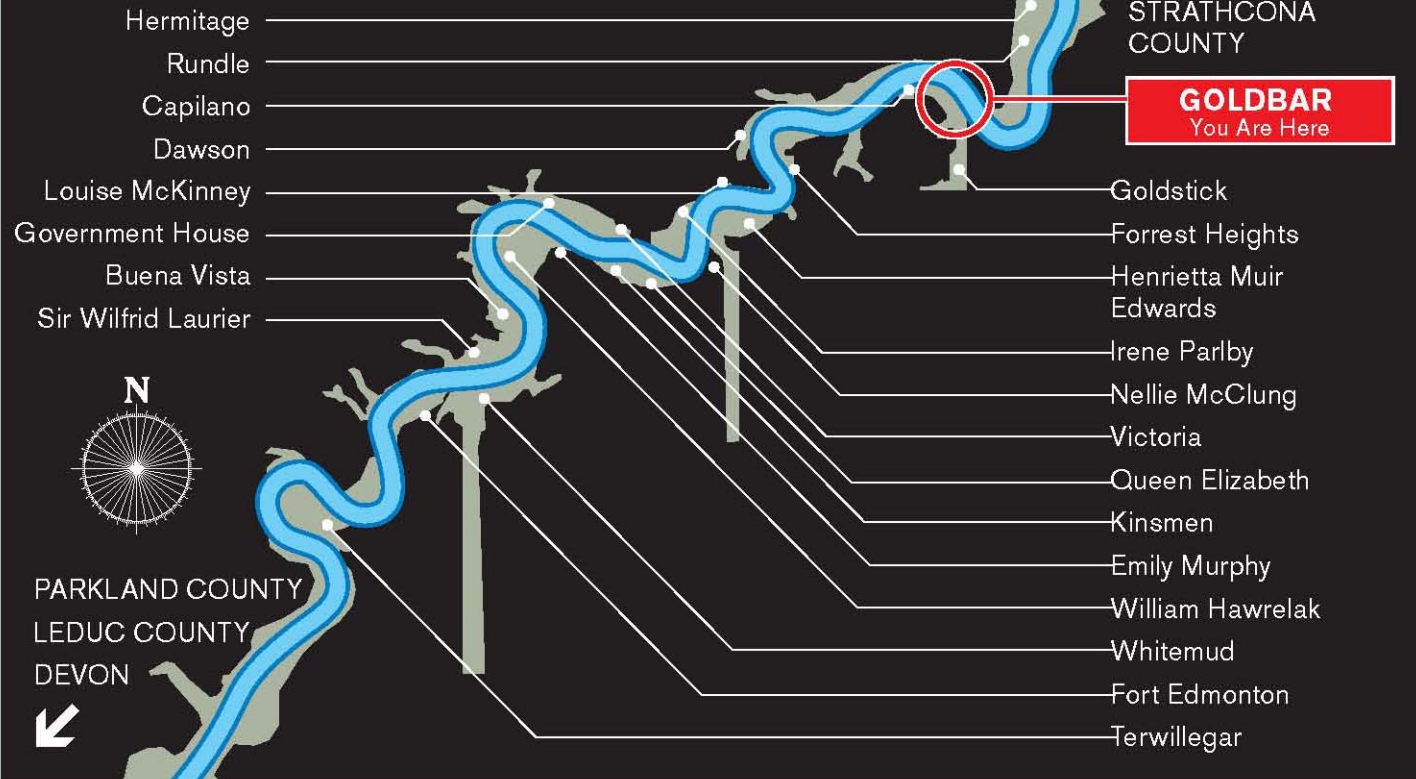
TRAIL 0.4 km

Ainsworth Dyer Footbridge

Goldstick Park

River Valley Park

Edmonton Area Parks



GRAPHIC ELEMENTS

System Hierarchy

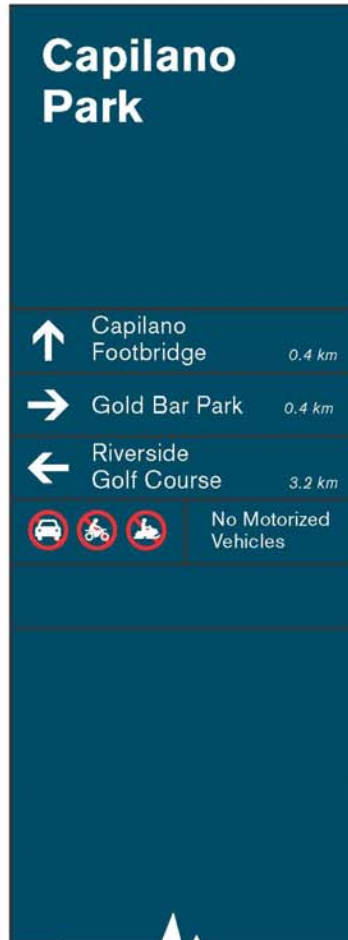
Sign system is made of modular components allowing for flexibility

Primary, secondary and tertiary messages are dictated by the sign location

Primary Message
Top location
Full size panel

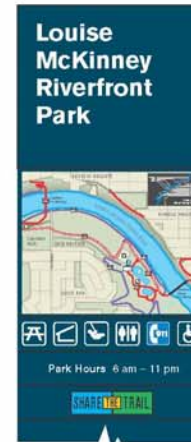
Secondary Message
Mid location
Half panel

Tertiary Message
Lower location
Half or quarter panel



Mid Pathway Entrance ID

Typical Location Examples



Park to Park Cross-over ID



Trail Head



Picnic Site ID



Boat Launch ID

New Option #1

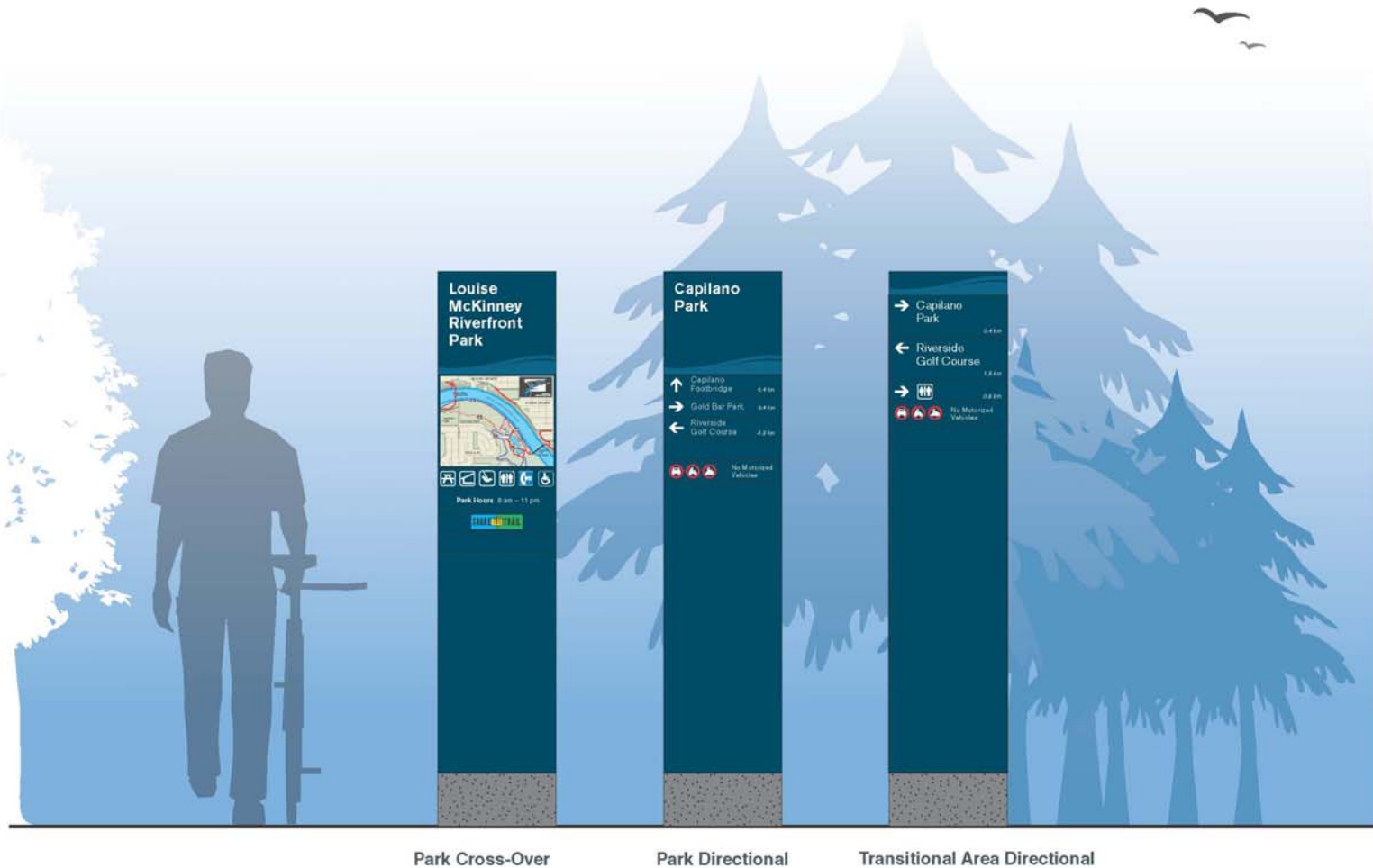
Pathway Signage Applications

System Components - Pathways

Modular metal panel system that can be updated.

Sign type use is dictated by information and location requirements.

Wave graphic applied consistently for all pathway signs, both in parks and transitional areas.



New Option #1

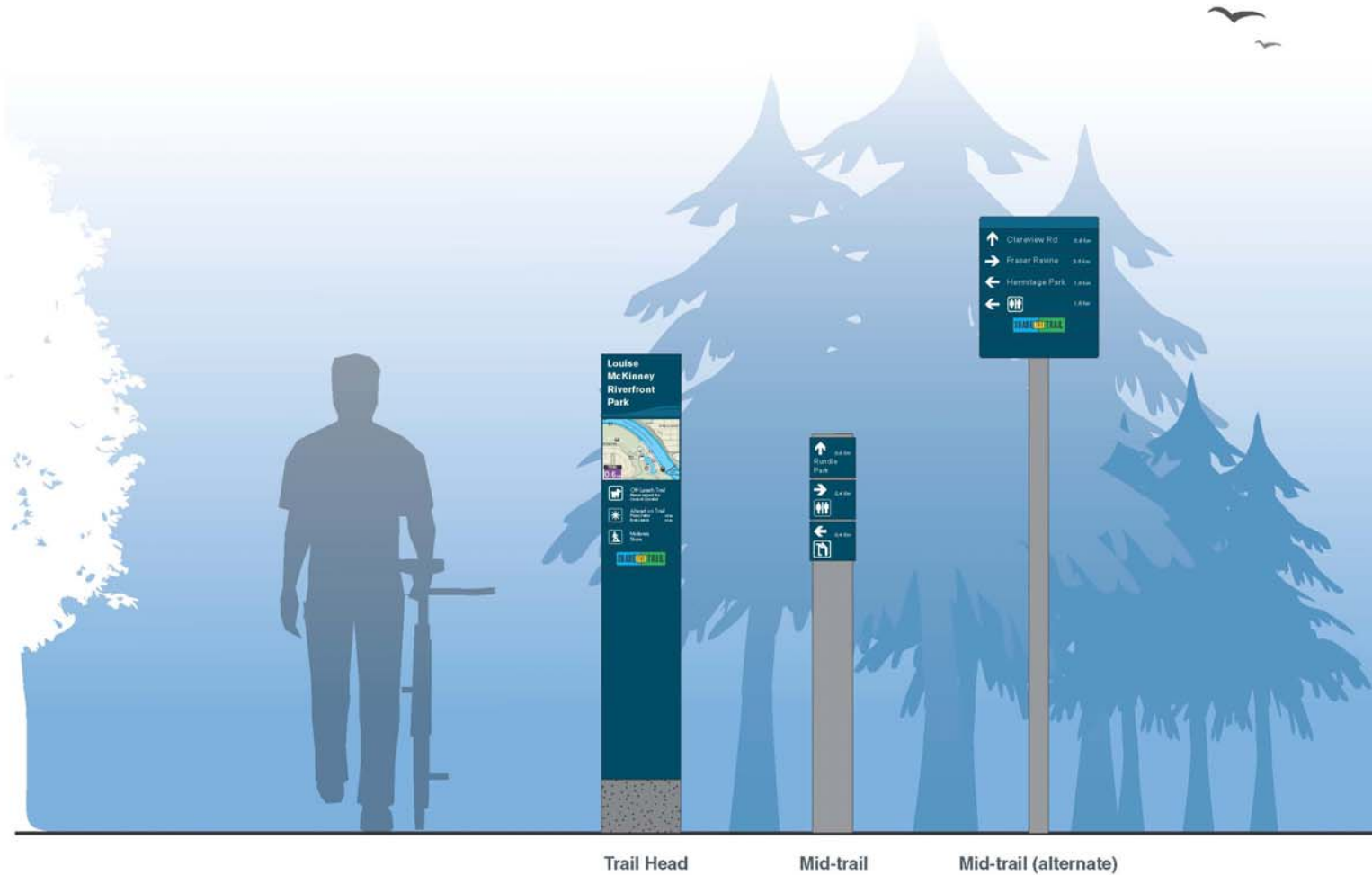
Trail Signage Applications

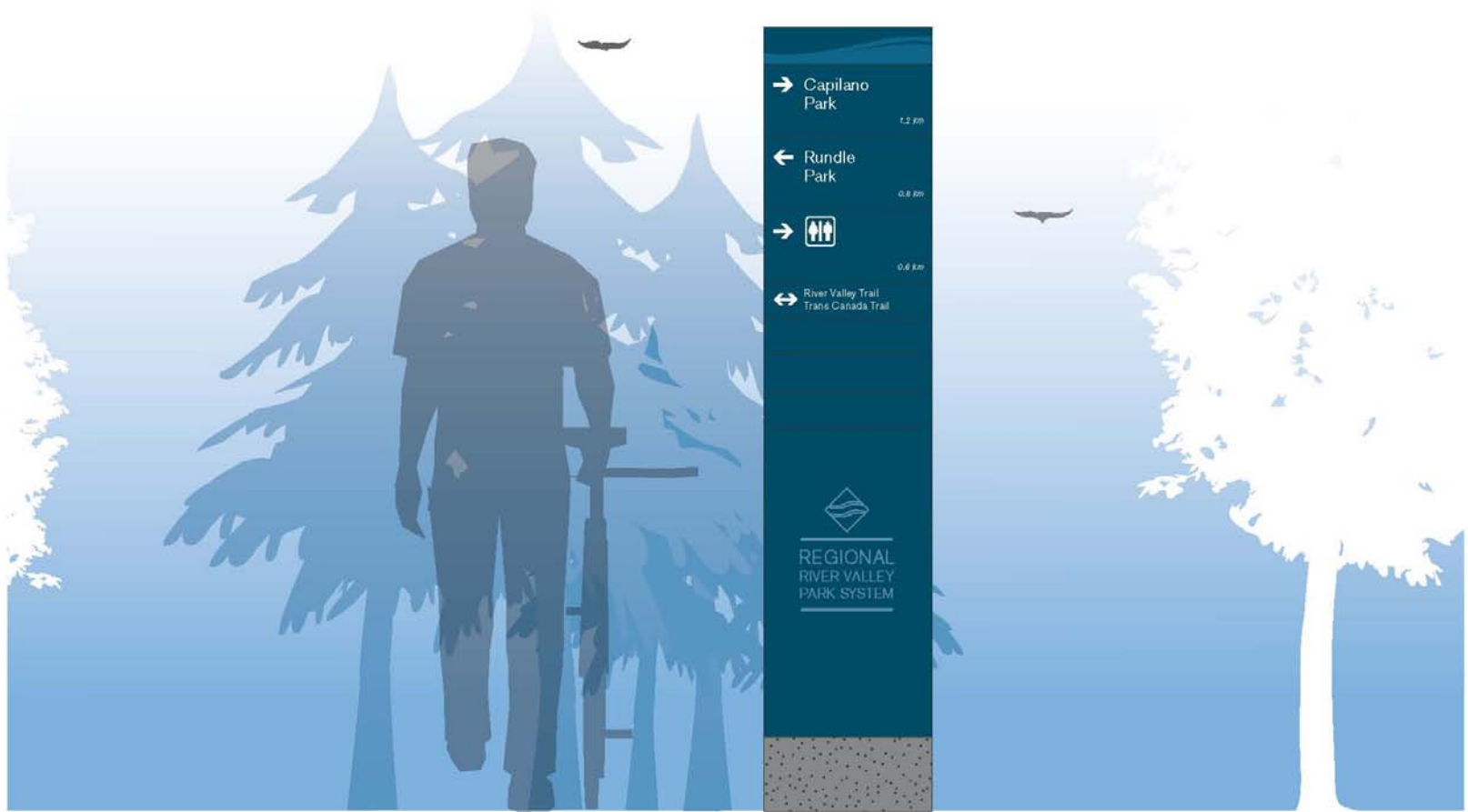
System Components - Trails

Modular metal panel system that can be updated.

Sign type use is dictated by information and location requirements.

Mid-trail signs to contain only three pieces of information. If more information needs to be given, a post and panel directional sign is recommended.





→ Capilano
Park

1.2 km

← Rundle
Park

0.8 km

→ 

0.6 km

↔ River Valley Trail
Trans Canada Trail



REGIONAL
RIVER VALLEY
PARK SYSTEM

New Option #1

Misc. Signage Applications

System Components - Misc. Messages

Modular metal post and panel system.

Sign type use is dictated by information and content requirements.

Signs can be augmented to accommodate changeable information, as reflected in the picnic sign shown.



Picnic Site

Boat Launch
Identification

Off-Leash Area
Code of Conduct

New Option #1

Regulatory Signage Applications

System Components

Regulatory signs utilize road sign standards.

Metal post and panel.

Graphics follow the signage family look and feel.

Temporary signs accommodate changeable information.



Regulatory

Temporary/Special Event/Disruption

Both Options

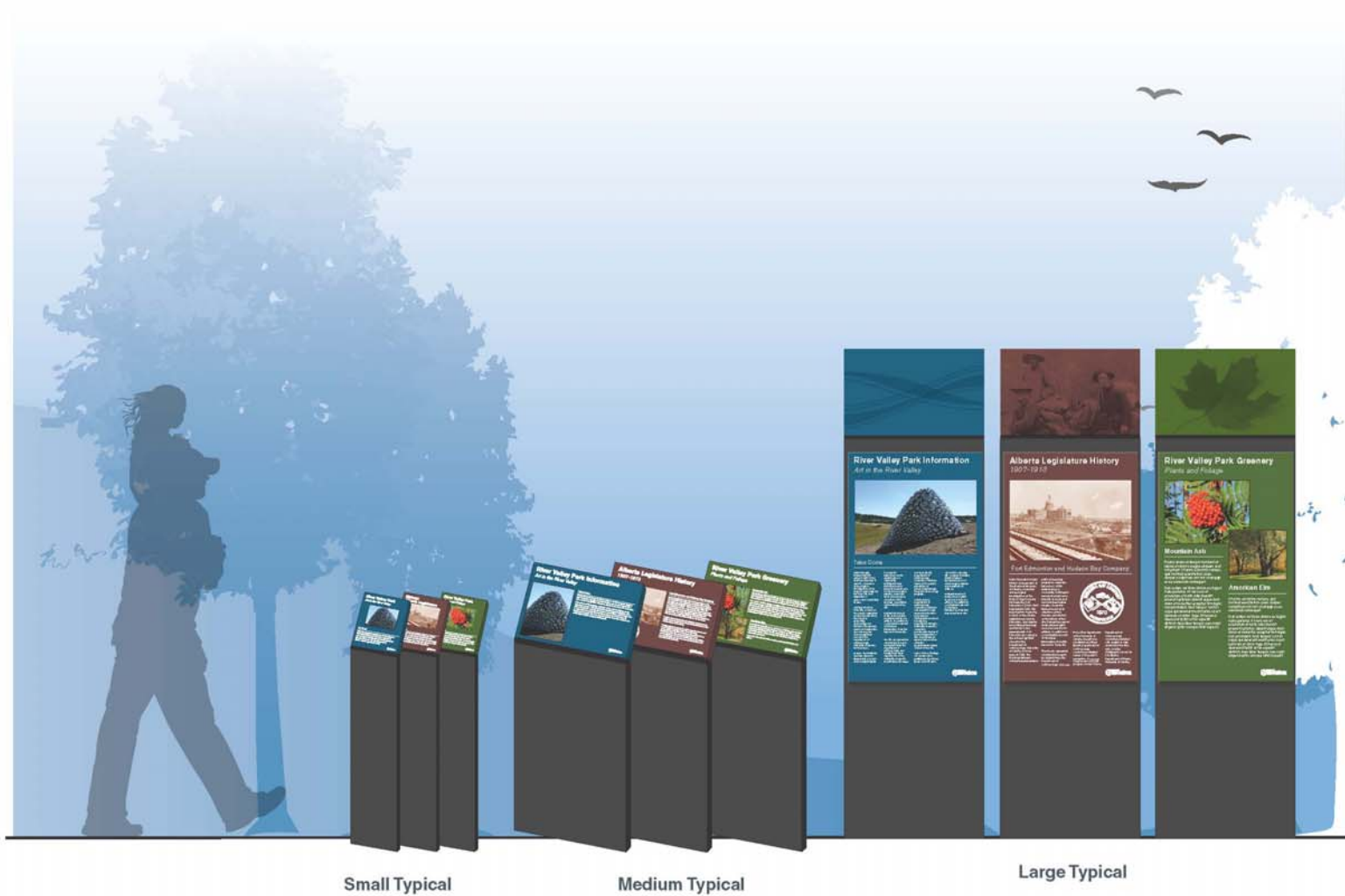
Interpretive Signage Applications

Interpretive Signage

Uniquely different colours for ecological, historic and 'other' (as yet undefined) categories.

Metal body with porcelain enamel graphics for longevity.

A single grey body color is recommended to allow interpretive signage colours to remain distinct and stand apart from wayfinding signage.



Small Typical

Medium Typical

Large Typical

New Option #1

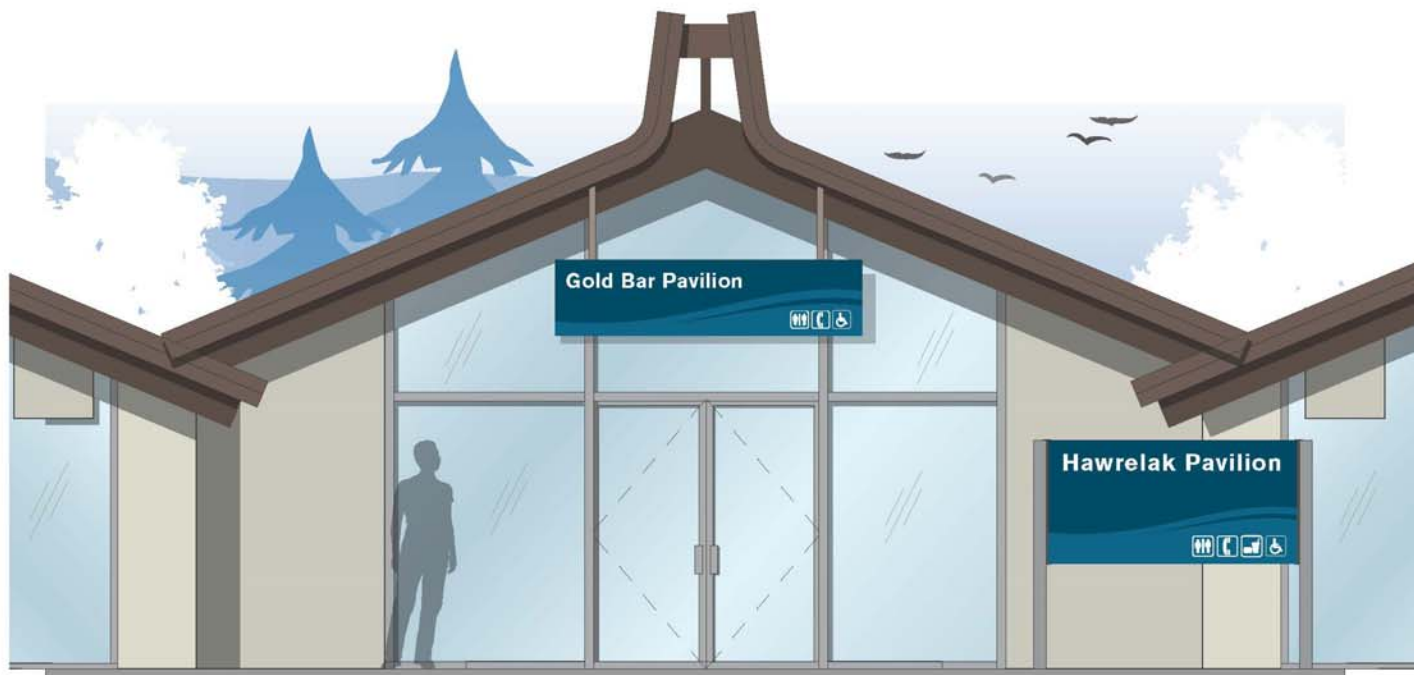
Pavilion Exterior Applications

Amenities Building

Hanging, freestanding and wall mounted options to suit building architecture.

Entrances feature washroom icons as their main function where appropriate.

Metal panel signs and graphics with painted accent walls.



Hanging Identification

Freestanding Identification



Wall Mounted Identification



Exterior Washroom Identification

New Option #1

Parking Directional Applications

Primary Parking Directional

Metal post and panel system.

For use in parks with multiple parking areas/destinations, or complex roads that are not straightforward to navigate.



New Option #1

Parking Directional Applications

Secondary Parking Directional

Metal post and panel system.

For use in parks with multiple parking areas/destinations, or complex roads that are not straightforward to navigate.

