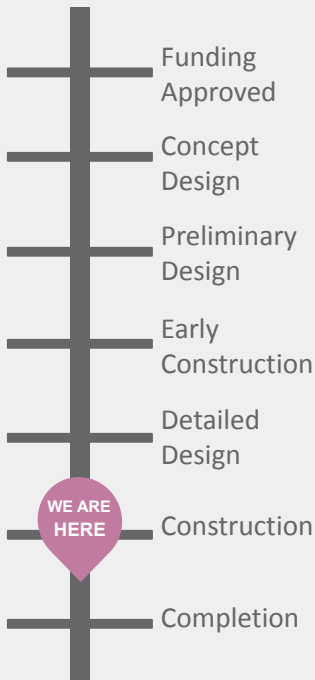


50 Street Widening and Railway Grade Separation

Edmonton

NEWSLETTER 7, Fall 2025

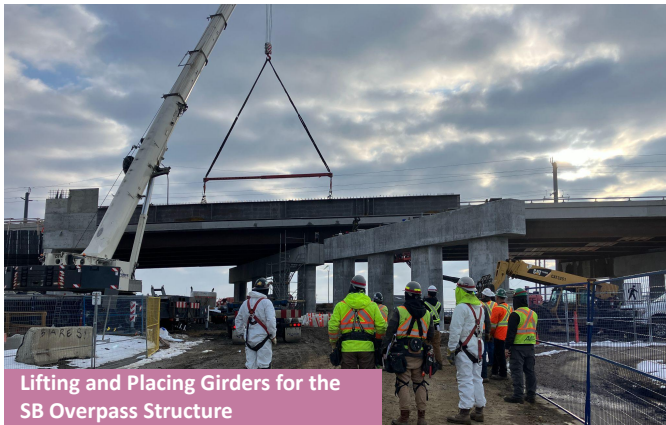
PROJECT TIMELINE



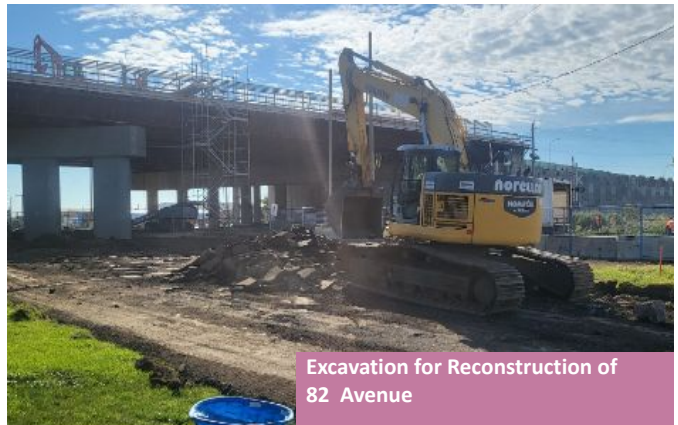
Project Update

Construction on the 50 Street Widening and Railway Grade Separation project began in May 2022. In 2025, the majority of construction on the southbound overpass was completed, including the substructure, girders, deck and associated MSE retaining walls. Significant progress was also made in the reconstruction of 82 Avenue with the grading and road gravel base completed. The paving of 82 Avenue will be completed in 2026, which will restore access from 50 Street to the businesses and neighborhood.

The southbound overpass structure and associated retaining walls are anticipated to be completed and opened to traffic in December 2025. Following the opening of the southbound overpass, finishing work on both the north and south overpasses and ramps (barriers, sidewalk and shared pathway), and final tie-in roadwork on 80 Avenue, 82 Avenue and 90 Avenue remain. The entire overpass will be fully operational in 2026.



Lifting and Placing Girders for the SB Overpass Structure



Excavation for Reconstruction of 82 Avenue



Deck Pour for the SB Overpass Structure



Formwork Installation for new Concrete Island at 90 Avenue Intersection

Upcoming in 2026

- + Both the south and north overpasses will be fully completed with three lanes of traffic in each direction.
- + 82 Avenue will be paved and fully operational.
- + Pedestrian access along 50 Street above the CP tracks will be constructed in both the northbound and southbound directions.
- + Landscaping work will be completed.



Sidewalk Construction on the SB Overpass



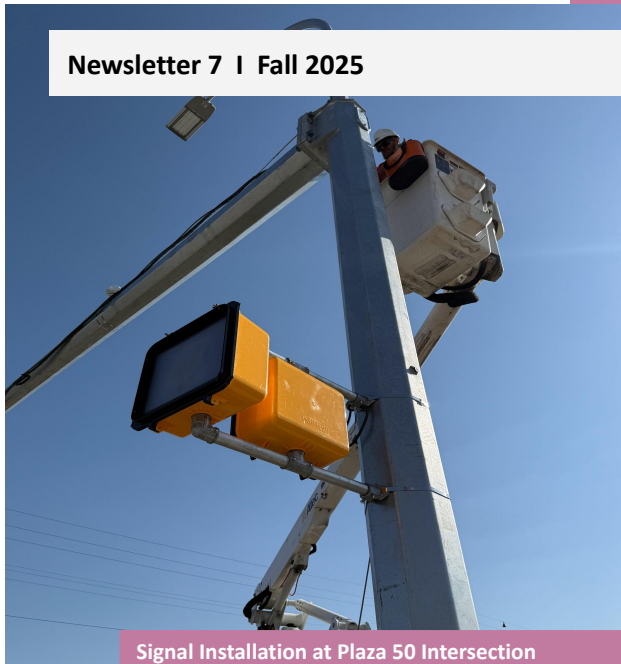
Pedestrian Rail Installation on the SB Overpass



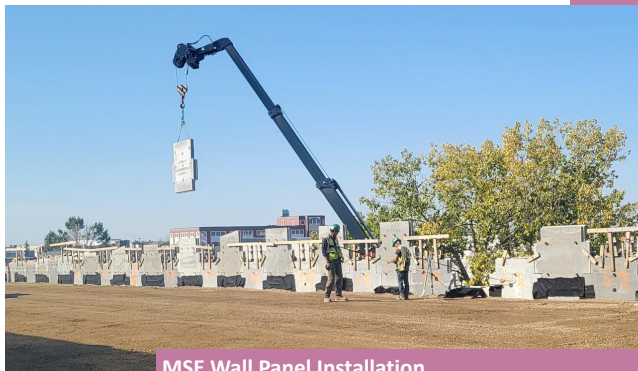
South Approach Ramp Paving



MSE Wall Strap Installation



Signal Installation at Plaza 50 Intersection



MSE Wall Panel Installation



Drainage Installation at 90 Avenue

The completed overpass will include:

- + A sidewalk on the southbound overpass/west side and a shared pathway on the northbound overpass/east side.
- + Widening 50 Street from four lanes to six lanes from north of the Sherwood Park Freeway to 90 Avenue.
- + A new connection underneath the overpass connecting 82 Avenue on the west with 84 Avenue on the east.
- + Streetlights located in the centre median of the overpass.
- + A restored green space between Kenilworth and 50 Street. The majority of trees will remain as they are.

Stay informed

Visit edmonton.ca/50StreetWidening to:

- + Get the latest project updates
- + Learn more about this important city-building project