

Construction Notice – Reminder about Full Closure of 12 Ave West

Starting **on/around May 24**, Ledcor will implement a **full closure of 12 Avenue west of 111 Street**. This closure is necessary for critical removals, civil drainage, ductbank and utility work, roadwork and trackwork. This closure is expected to last approximately **10 weeks**.

During the 12 Avenue west closure, motorists will be **detoured to 9 Avenue**. Below are details of this closure and mitigation measures.

- Four traffic lanes will be open at 9 Avenue west:
 - Two eastbound to northbound left-turn lanes
 - One eastbound through/right-turn lane (southbound) out of Twin Brooks
 - The “no-right-on-red” turn movement (southbound) will be temporarily removed to support better traffic flow during the 12 Avenue west closure.
 - One westbound through lane into Twin Brooks to support traffic flow and reliable access for emergency vehicles.
- The Traffic Operations team will continue to monitor conditions and adjust signal timing or signage where possible.
- Crews will work extended hours and overnight when necessary to complete the work as quickly and safely as possible.
- Once 12 Avenue west reopens, work will shift to 9 Avenue west with a similar full closure, and traffic will be detoured to 12 Avenue. **A future construction notice will be issued prior to the 9 Avenue closure.** Throughout this period, at least one access into Twin Brooks will be fully open.
- By completing these closures in 2026, the vast majority of critical work can be finalized at each intersection in the shortest possible time, minimizing the remaining work in future years. **Following this construction season, Ledcor does not anticipate any further full closures in the area.**
- We know the closure of 12 Avenue west will be challenging for residents, businesses, commuters and parents dropping off/picking up students at George P. Nicholson school. Ongoing coordination and communication with the school will continue.

The City and Ledcor are aware of community concerns regarding emergency vehicle access in and out of Twin Brooks during the upcoming closure. Below are further details on how

the City and Ledcor are managing emergency access plans to ensure safe and reliable access remains in place.

- Emergency services will primarily dispatch vehicles from the south via Anthony Henday Drive to avoid delays at the Blackmud Creek bridge.
- Emergency services will use 9 Avenue as the primary access for Twin Brooks; however, Ledcor is maintaining an access point for emergency vehicles (even during active excavation) through the closed intersection at all times (24/7).
- The access point will be large enough to accommodate emergency vehicles (an opening in the hard barriers), along with either a temporary access built off to the side or through the construction zone.
- Signage will be in place at the construction zone to instruct emergency services on the access location, along with ongoing communication with emergency responders.
- See the [Public Notice](#) for more information on emergency access during the closure.

Critical work must also continue along 111 Street near Blackmud Creek, and **111 Street is anticipated to remain one lane southbound and one lane northbound until fall 2026.**

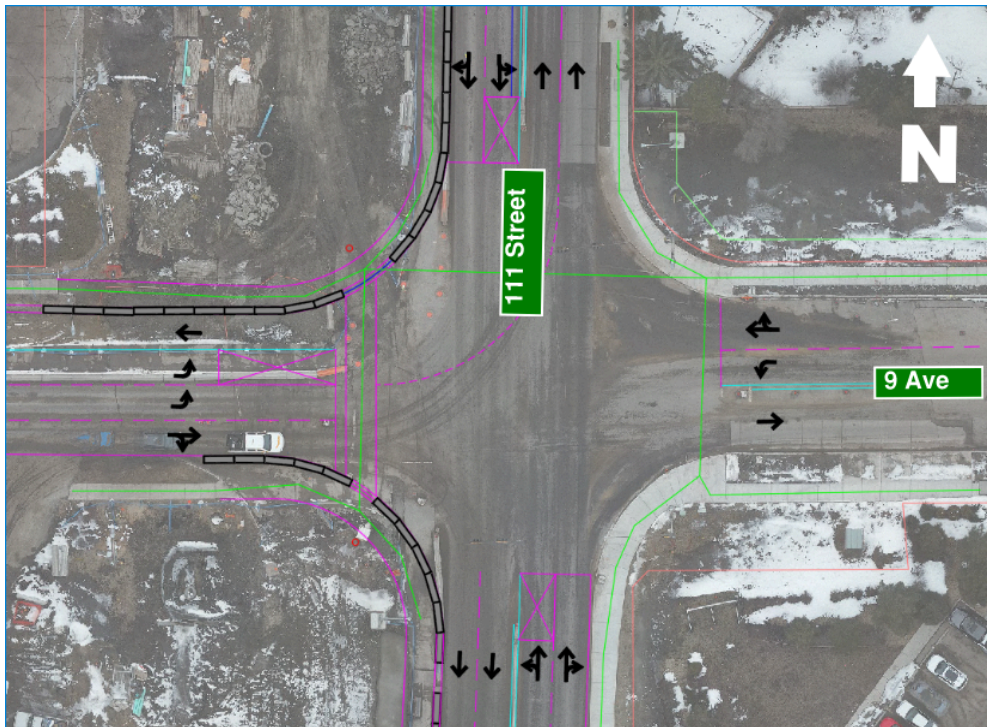
We recognize lane reductions on 111 Street, along with the full closures of 12 Avenue west and 9 Avenue west, will be very challenging for residents, especially those entering and exiting Twin Brooks.

We thank nearby residents for their patience and understanding as we complete this important work. Please refer to the maps below for details.

Map 1: Full closure of 12 Avenue west - starting on/around May 24



Map 2: 9 Avenue traffic configuration (during 12 Avenue west closure)



Map 3: ETS bus detour route along 9 Avenue and 113 Street



What to Expect

Traffic Impacts

- Motorists will be unable to use 12 Avenue west to access or exit onto 111 Street. Motorists will be detoured to 9 Avenue.
- The speed limit on 111 Street approaching the work zones continues to be reduced to 40 km/h in both directions.

Emergency Response Coordination

- **During construction, primary emergency access is planned from the south via Anthony Henday Drive.**
- The City and Ledcor are in regular communication with ambulance services, Edmonton Fire Rescue Services and the Edmonton Police Service.
- Emergency services are proactively informed of all construction impacts and closures.
- To ensure public safety, emergency services utilize established protocols and mitigations when navigating lane closures and construction zones across the city.

In the event of a collision or stall along 111 Street/Blackmud Creek Bridge

- Construction crews are prepared to work directly with emergency responders to manage incidents quickly and safely along constrained corridors when safe and feasible.
- This includes flagging, temporarily holding or redirecting traffic and assisting with

clearing the area.

- In certain areas, hard barriers have been replaced with smaller, movable directional panels, allowing emergency vehicles to navigate through traffic more easily, if required.

Pedestrian Detour

- Pedestrians and cyclists travelling north-south can use the crosswalk on the east side of 111 Street at 12 Avenue.
- At least two of the four crosswalks will be maintained at the 12 Avenue intersection, with proper detour signage.
- Walkways may be shifted around work areas depending on construction. Fencing, barriers and ramps will be used to ensure pedestrians and cyclists can travel safely through the work zone.

Other Impacts

- For bus route 713, stops #4535 and #4348 will be temporarily closed, with Bus Stop #4428 (113 Street / 12 Avenue WB) being the alternate stop.
- For bus routes 521, 667, 718, 719, 721, 722, and 729, Bus Stop #4105 - 111 Street & 12 Avenue (SB) will be temporarily closed, halfway between 12 Avenue and 9 Avenue.
- Bus Route 713 will detour to 9 Avenue and 113 Street during this work. **No parking will be allowed along the east side of 113 Street to maintain bus access.**
- Efforts will be made to minimize noise, vibration and dust. Mitigation measures will be implemented to monitor and reduce these impacts. Ledcor is committed to complying with all City of Edmonton bylaws* and regulations and will obtain an overnight permit to allow work during overnight hours.

*City of Edmonton Bylaw C14600.

For More Information

City of Edmonton (general project inquiries)

Visit: edmonton.ca/capitalsw

Email: lrtprojects@edmonton.ca

Call: LRT Projects Information Centre at 780-496-4874 (voicemail)

Ledcor Group of Companies (construction-specific inquiries)

Email: capitallinesouth@ledcor.com

Call: Capital Line South public inquiry line at 780-540-7013 (voicemail)