



Welcome

112 Avenue Bridge Rehabilitation Pre-construction information session

Learn more by going to: edmonton.ca/112AveBridgeRehab

Edmonton

Project overview

112 Avenue Bridge Rehabilitation

- + The 112 Avenue Bridge will be rehabilitated to ensure the continued safety of all users and extend bridge's service life
- + Originally constructed in 1972, the 112 Avenue Bridge carries eastbound and westbound vehicle traffic, as well as pedestrians and cyclists, over Wayne Gretzky Drive
- + The bridge underwent its first rehabilitation in 1997 and is now due for second-generation rehabilitation
- + The work will address deteriorating bridge deck conditions and corrosion of the bridge rails and to ensure the bridge continues to operate safely and reliably

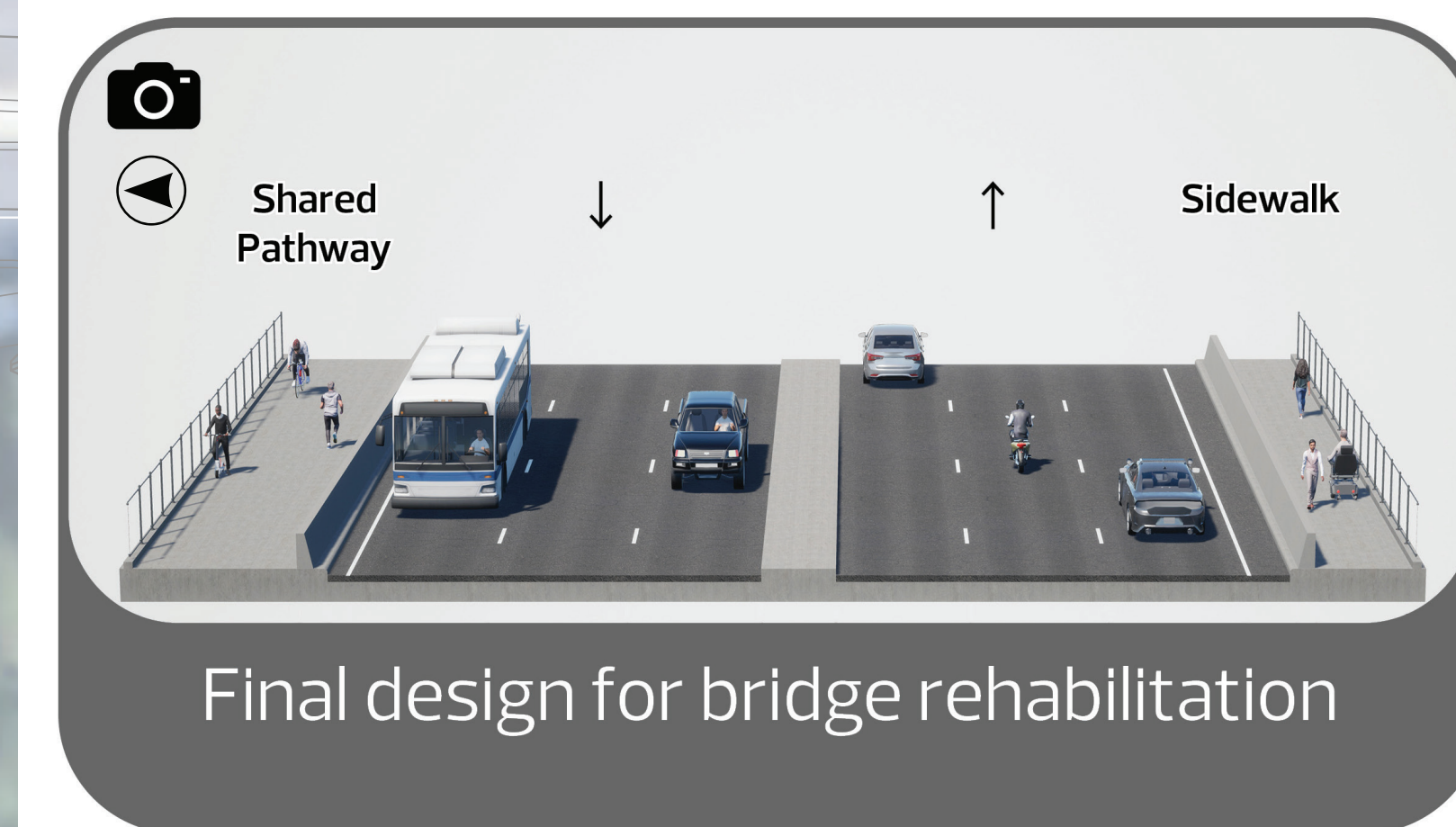
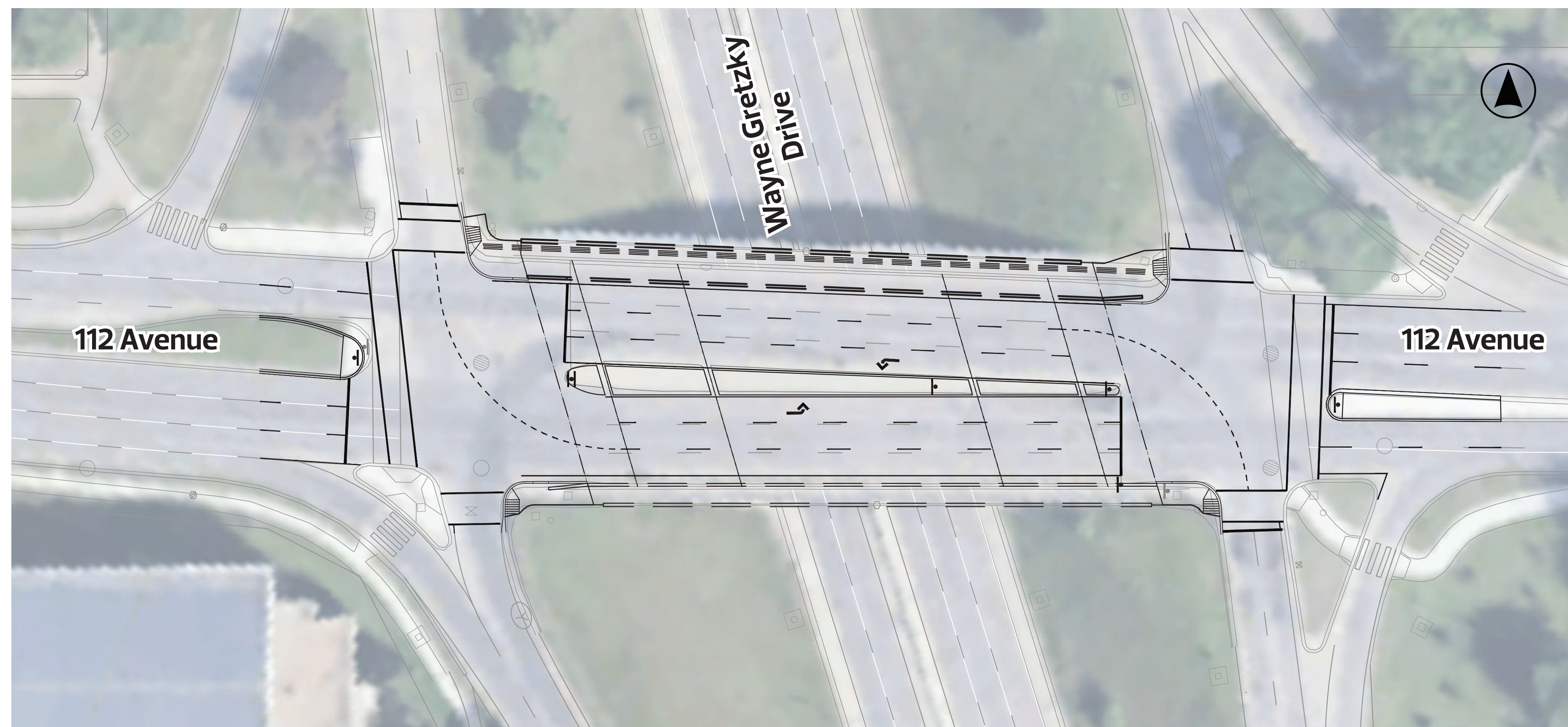
Learn more by going to: edmonton.ca/112AveBridgeRehab

The Edmonton logo, featuring the word "Edmonton" in white text on a blue rectangular background. The background of the slide is a photograph of a street scene with a black signpost. The signpost has three signs: a top sign for "70 STREET" with "EST. BELLEVUE 1976" above it, a middle sign for "112 AVENUE" with "Knox Avenue" below it, and a bottom sign for "112 AVENUE" with "Knox Avenue" below it. A silver car is visible on the road to the right.

Bridge rehabilitation

Final design for the rehabilitated bridge

- + Two travel lanes in each direction and dedicated left turn lanes
- + Sidewalk maintained on the south side of the bridge
- + A new shared pathway will be added on the north side of the bridge to connect to the wider active transportation network



Learn more by going to: edmonton.ca/112AveBridgeRehab



During construction

Impacts

- + Construction is scheduled to start in April 2026 and will be completed in two phases
- + Traffic and pedestrian access will be shifted to one side of the bridge while construction activities are underway
- + There will be reduced lanes on 112 Avenue, one through lane and a turning lane on the bridge in each direction
- + Temporary lane closures on Wayne Gretzky Drive will be required at times to safely accommodate construction activities
- + The bridge will reopen all lanes of traffic during the winter months

- + All ramp access on to Wayne Gretzky Drive will remain open, with lane reductions off of Wayne Gretzky Drive to one turning lane in each direction

Detours

- + No planned detours are required during construction
- + Limited overnight or weekend full closures may be required for rehabilitation work. We will provide advance notice to the community and motorists prior to any disruptions

Learn more by going to: edmonton.ca/112AveBridgeRehab

Phase 1 Construction Plans



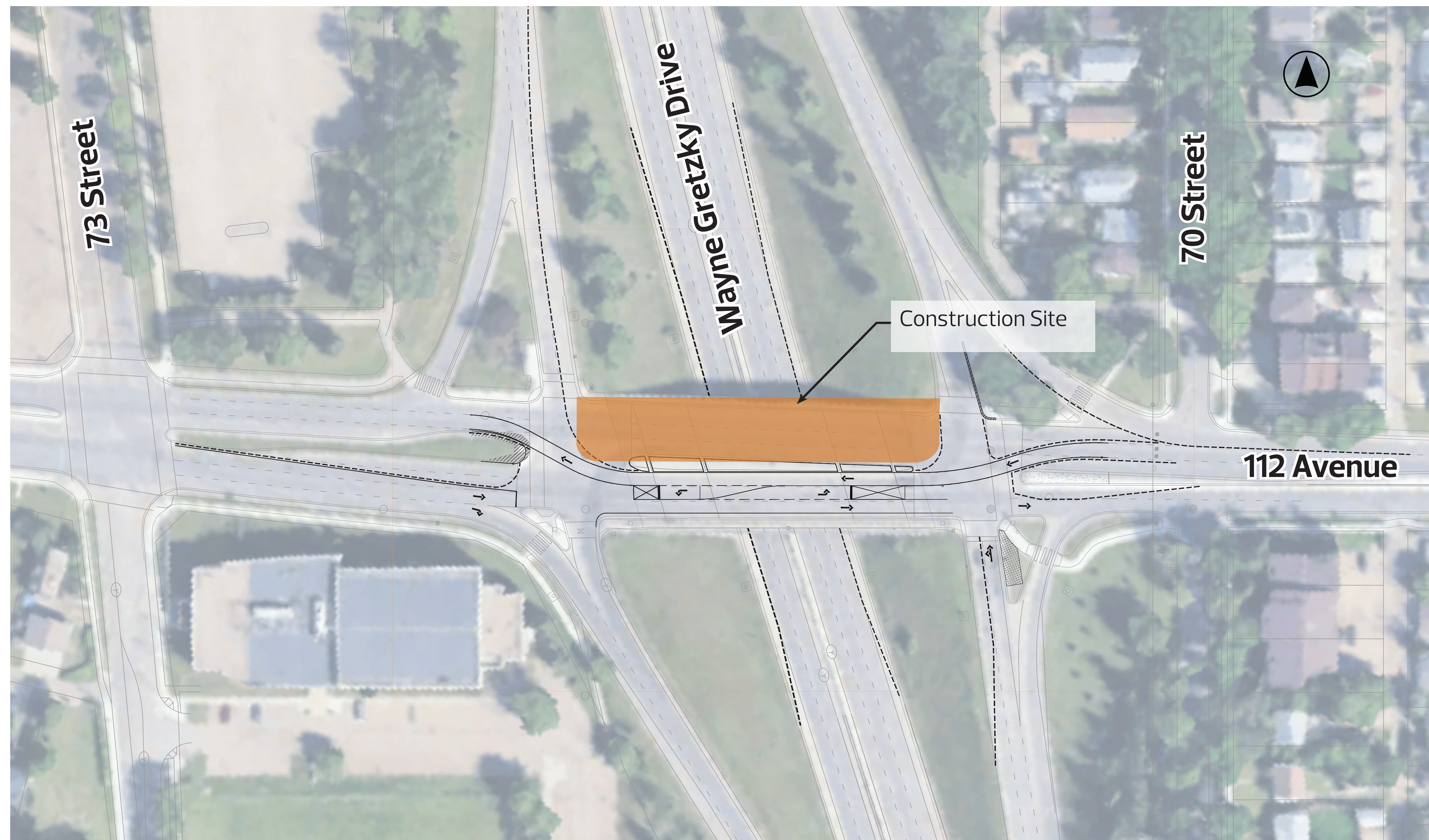
- + Construction activities on the south side of the bridge
- + Vehicle traffic will be diverted to the north side of the bridge
- + The north sidewalk will remain open during construction
- + Off ramps will be reduced to one left turn lane

Learn more by going to: edmonton.ca/112AveBridgeRehab

Edmonton



Phase 2 Construction Plans



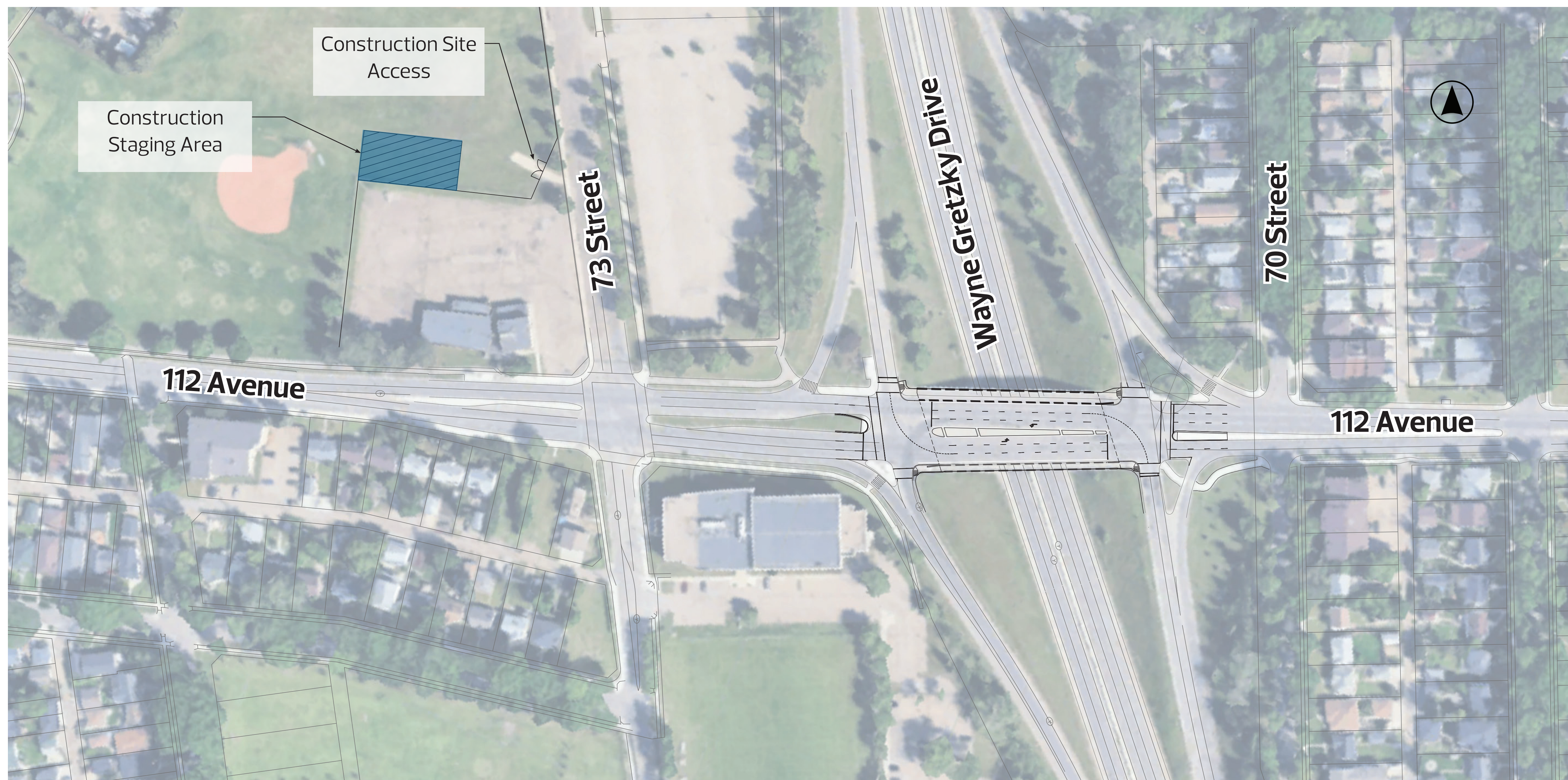
- + Construction activities on the south side of the bridge
- + Vehicle traffic will be diverted to the south side of the bridge
- + The south sidewalk will remain open during construction
- + Off ramps will be reduced to one left turn lane

Learn more by going to: edmonton.ca/112AveBridgeRehab

Edmonton



Construction staging



Learn more by going to: edmonton.ca/112AveBridgeRehab