

107 Street Streetscaping: 99 Avenue to Jasper Avenue Design Booklet

June 2026

Project Vision

Create a vibrant, people-first corridor that supports community and strengthens environmental resilience for the next generation.

Table of Contents

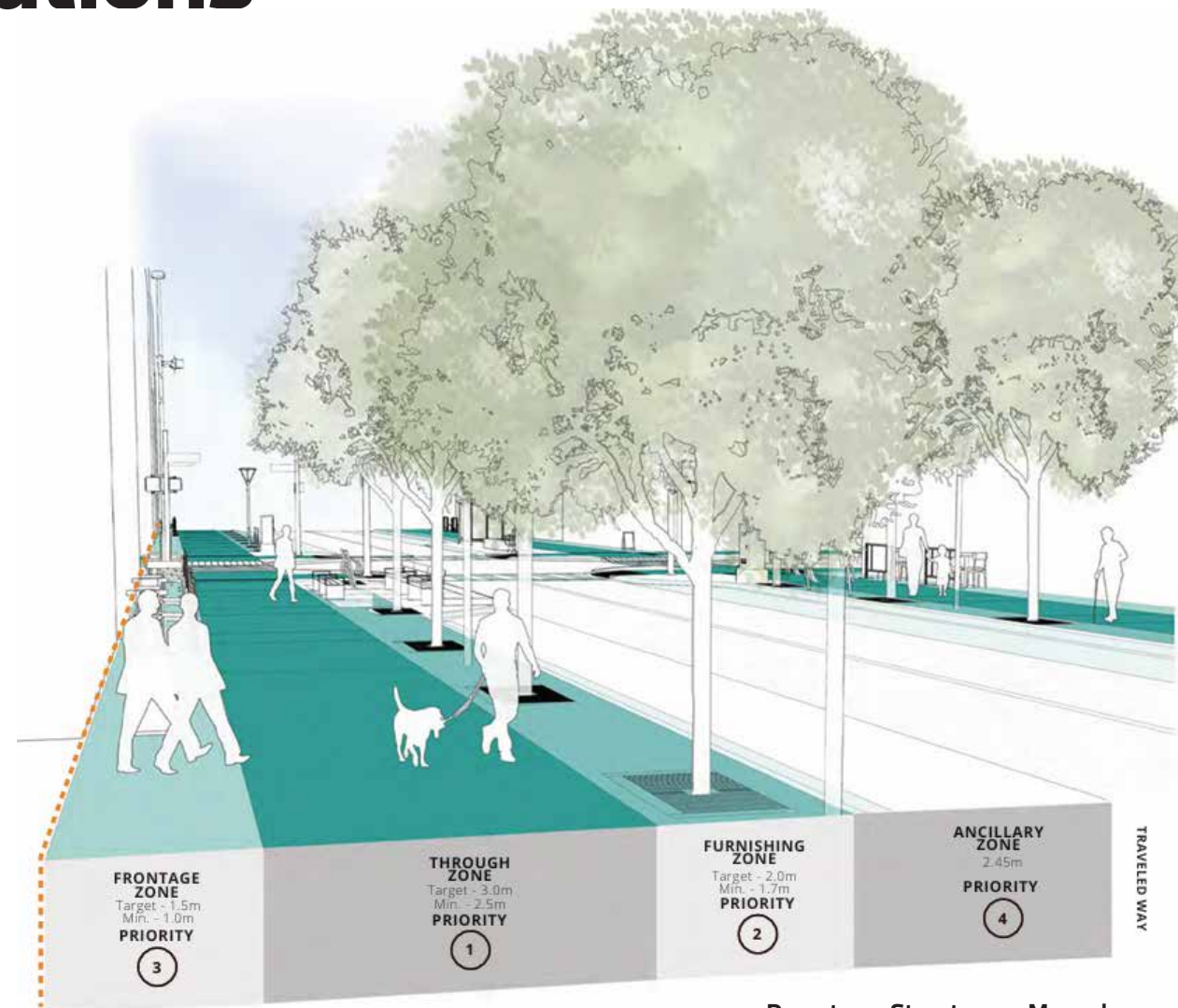
Project Considerations	2
Design Overview	3
107 Street: 99 Avenue to 100 Avenue	4
107 Street: 100 Avenue to Jasper Avenue	5
Material Palette	6
Bus Stops	7

Project Considerations

In addition to the current context, challenges and constraints such as trees and utilities, the Downtown Streetscape Design Manual provides clear guidance to inform the 107 Street streetscape design.

In planning, the Project Team considered the needs of all modes of transportation (pedestrians, cyclists, transit riders, E-scooters, strollers, mobility scooters and vehicle drivers) and how each might use the specific zones at different times of day through all seasons.

The team also considered needs such as deliveries, drop-offs and pick-ups, ride sharing, etc. and the specific needs of individual properties and businesses.



Downtown Streetscape Manual:
Typical zones considered in streetscape designs

Design Overview

Active Transportation

- + Sidewalk widened for an unobstructed pedestrian experience
- + Existing bi-directional (two-way) bike lanes between 99 Avenue and 100 Avenue will be converted to raised, one-way bike lanes (one on each side of the street)
- + The mid-block crossing raised to sidewalk level, providing improved accessibility for pedestrians

Driving and Parking

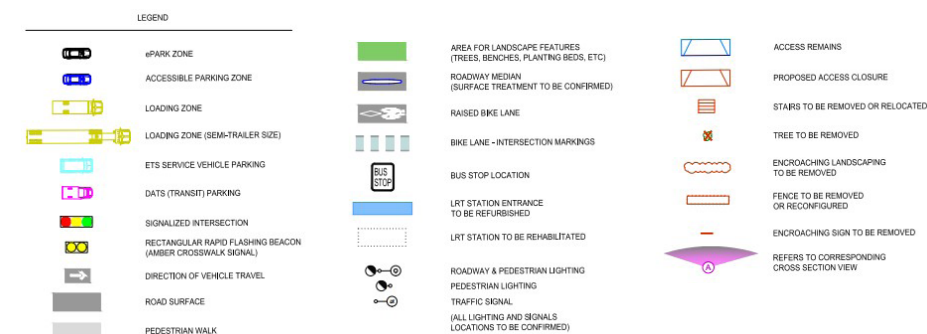
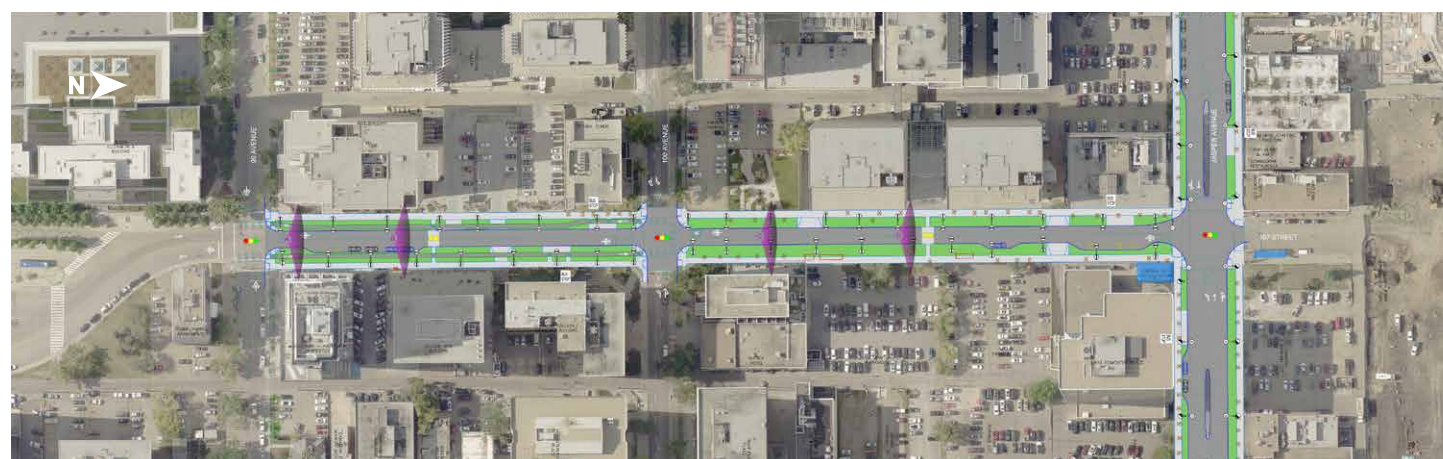
- + Most on-street parking re-allocated to create space for streetscape elements such as trees, planting beds and seating areas
- + Removal of existing dedicated southbound and northbound left turn lanes at 100 Avenue
- + Two vehicle travel lanes (one in each direction) maintained

Transit

- + Bus stop locations in southbound direction maintained
- + Bus stops in northbound direction consolidated from two stops into one
- + Bus stops in curbside travel lane for efficient boarding and exiting of transit riders

Public Space

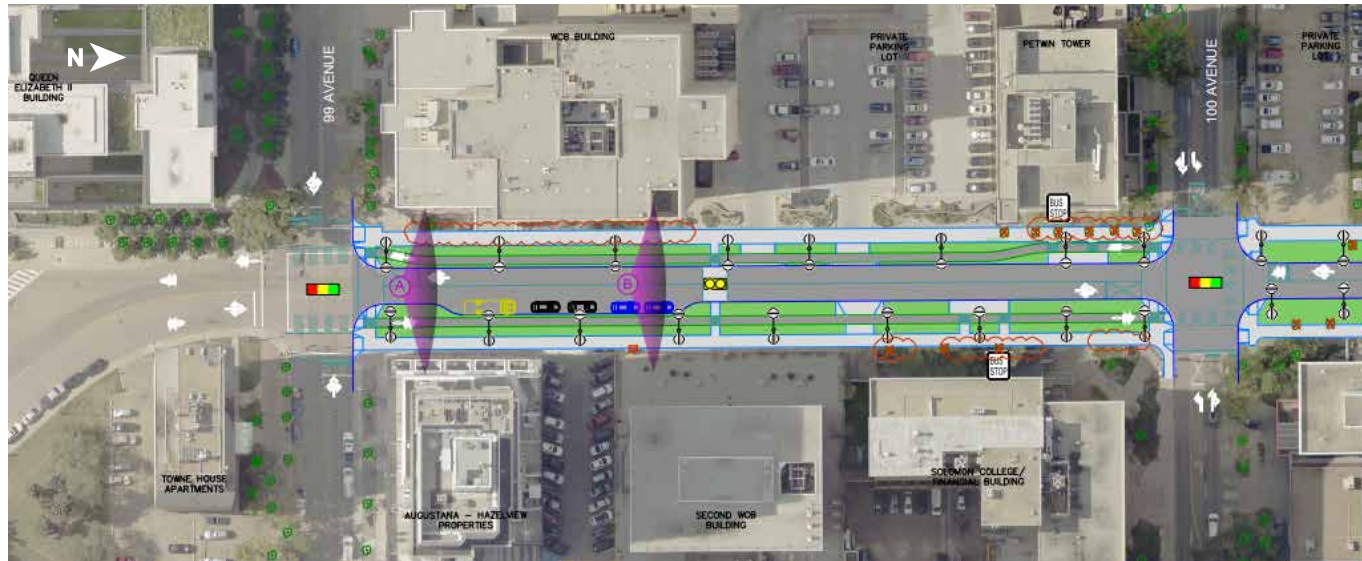
- + Some existing landscaping will be removed to widen the pedestrian space. New trees will be planted in the furnishing zone (adjacent to the road)
- + Street lighting upgraded
- + Access to adjacent properties maintained



[Click to view larger image.](#)

Construction timelines are yet to be determined.

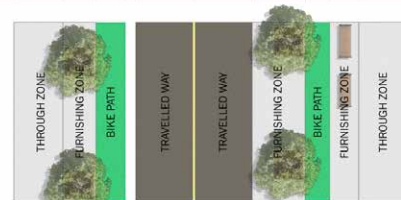
107 Street: 99 Avenue to 100 Avenue



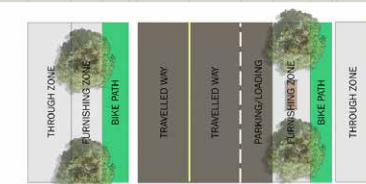
Rendering: West side of 107 Street, just south of 100 Avenue, looking north.

LEGEND			
	@PARK ZONE		BUS STOP LOCATION
	ACCESSIBLE PARKING ZONE		LRT STATION ENTRANCE TO BE REFURBISHED
	LOADING ZONE		LRT STATION TO BE REHABILITATED
	LOADING ZONE (SEMI-TRAILER SIZE)		ROADWAY & PEDESTRIAN LIGHTING
	ETS SERVICE VEHICLE PARKING		PEDESTRIAN LIGHTING
	DATS (TRANSIT) PARKING		TRAFFIC SIGNAL
	SIGNALIZED INTERSECTION		(ALL LIGHTING AND SIGNALS LOCATIONS TO BE CONFIRMED)
	RECTANGULAR RAPID FLASHING BEACON (AMBER CROSSWALK SIGNAL)		ACCESS REMAINS
	DIRECTION OF VEHICLE TRAVEL		PROPOSED ACCESS CLOSURE
	ROAD SURFACE		STAIRS TO BE REMOVED OR RELOCATED
	PEDESTRIAN WALK		TREE TO BE REMOVED
	AREA FOR LANDSCAPE FEATURES (TREES, BENCHES, PLANTING BEDS, ETC)		ENCROACHING LANDSCAPING TO BE REMOVED
	ROADWAY MEDIAN (SURFACE TREATMENT TO BE CONFIRMED)		FENCE TO BE REMOVED OR RECONFIGURED
	RAISED BIKE LANE		ENCROACHING SIGN TO BE REMOVED
	BIKE LANE - INTERSECTION MARKINGS		REFERS TO CORRESPONDING CROSS SECTION VIEW

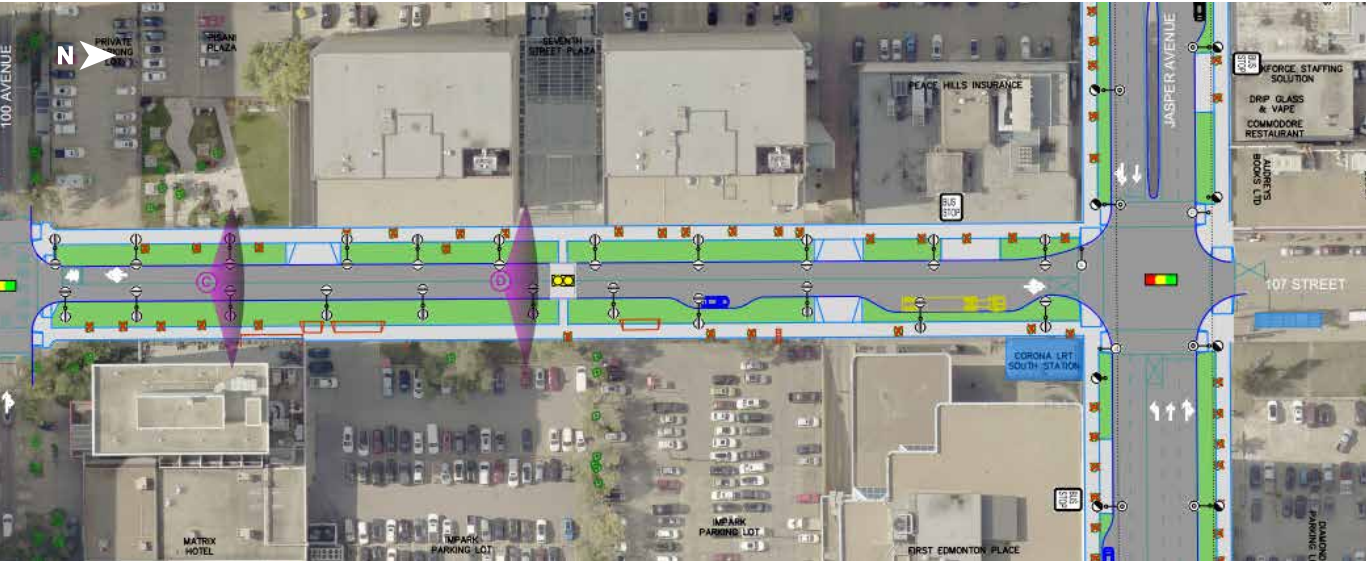
View A



View B



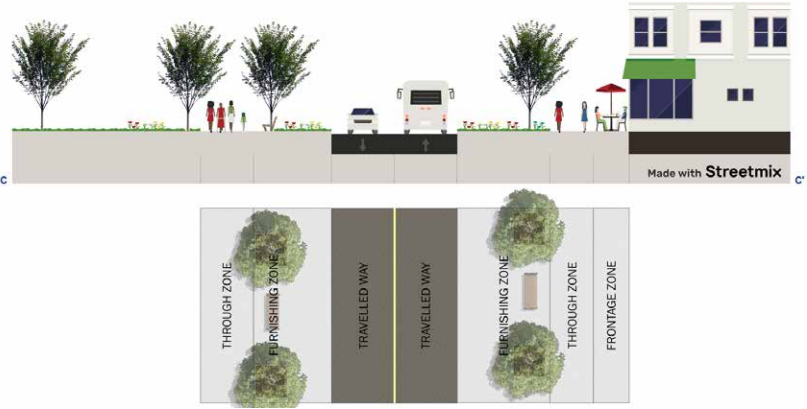
107 Street: 100 Avenue to Jasper Avenue



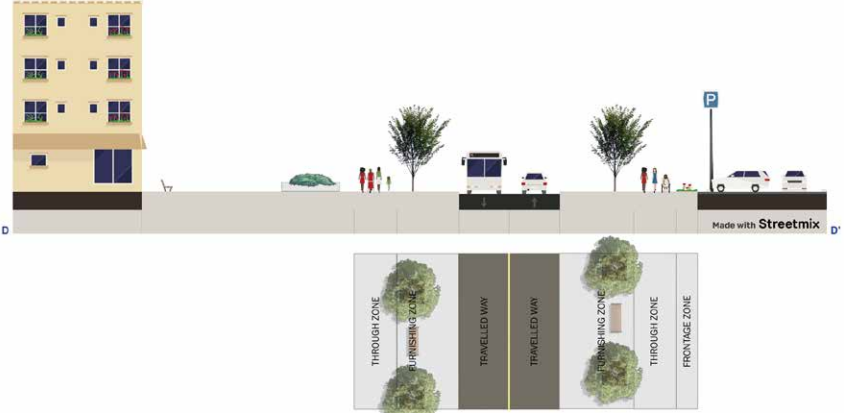
Rendering: 107 Street mid block between 100 Avenue and Jasper Avenue facing west

LEGEND			
	#PARK ZONE		BUS STOP LOCATION
	ACCESSIBLE PARKING ZONE		LRT STATION ENTRANCE TO BE REHABILITATED
	LOADING ZONE		LRT STATION TO BE REHABILITATED
	LOADING ZONE (SEM-TRAILER SIZE)		ROADWAY & PEDESTRIAN LIGHTING
	ETS SERVICE VEHICLE PARKING		PEDESTRIAN LIGHTING
	DATS (TRANSIT) PARKING		TRAFFIC SIGNAL
	SIGNALIZED INTERSECTION		ALL LIGHTING AND SIGNALS LOCATIONS TO BE CONFIRMED
	RECTANGULAR RAPID FLASHING BEACON (AMBER CROSSWALK SIGNAL)		ACCESS REMAINS
	DIRECTION OF VEHICLE TRAVEL		PROPOSED ACCESS CLOSURE
	ROAD SURFACE		STAIRS TO BE REMOVED OR RELOCATED
	PEDESTRIAN WALK		TREE TO BE REMOVED
	AREA FOR LANDSCAPE FEATURES (TREES, BENCHES, PLANTING BEDS, ETC)		ENCROACHING LANDSCAPING TO BE REMOVED
	ROADWAY MEDIAN (SURFACE TREATMENT TO BE CONFIRMED)		FENCE TO BE REMOVED OR RECONFIGURED
	RAISED BIKE LANE		ENCROACHING SIGN TO BE REMOVED
	BIKE LANE - INTERSECTION MARKINGS		REFERS TO CORRESPONDING CROSS SECTION VIEW

View C

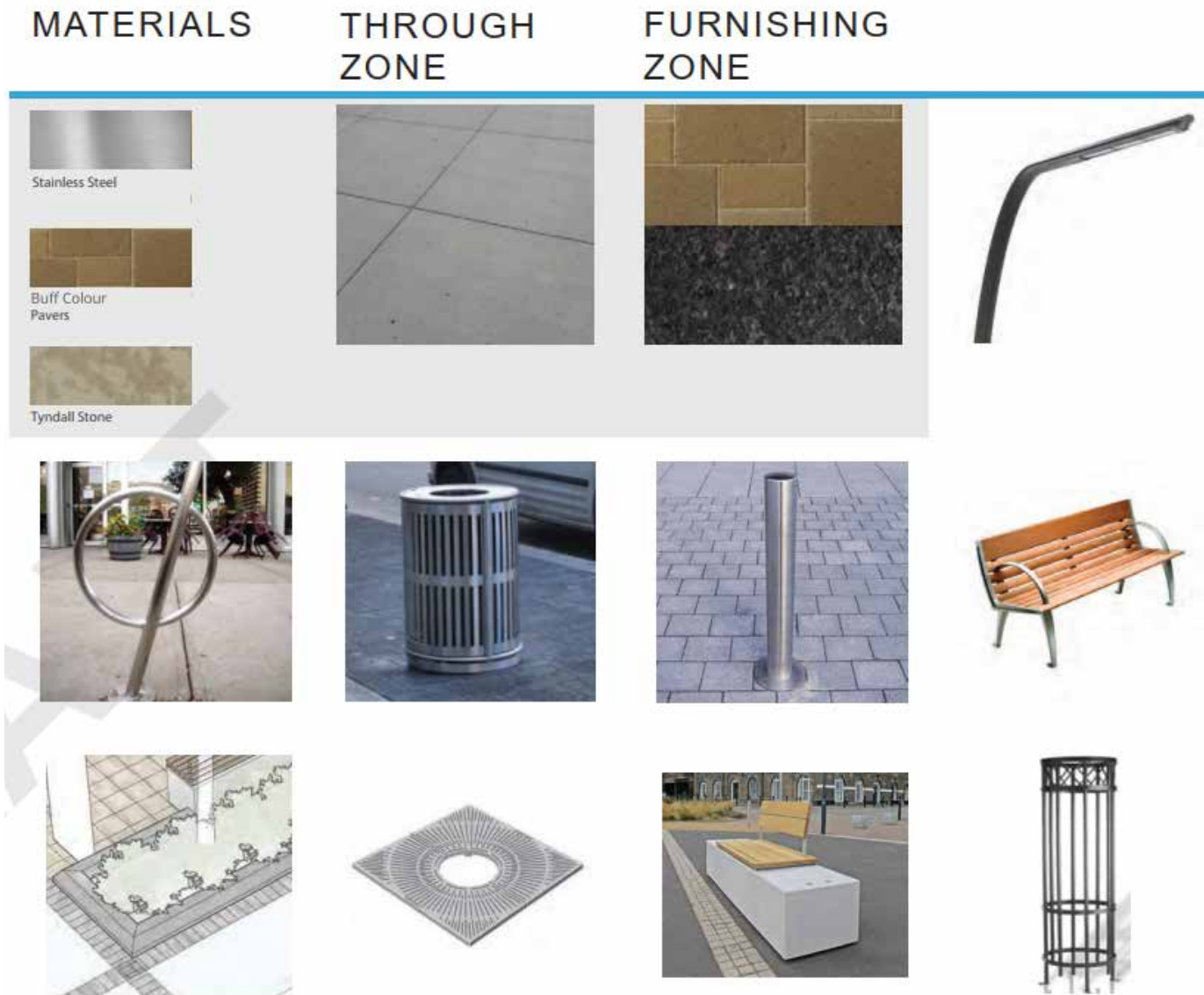


View D



Materials Palette

In accordance with the Downtown Streetscape Design Manual, 107 Street is designated as a Neighbourhood Mixed-Use Street found within the Capital City District character area.



Bus Stops

While bus routes are not planned to change, some bus stops will be relocated based on previous ETS route planning.

