

Construction Notice – Off-peak lane closures on Ellerslie Road and Heritage Valley Trail SW

Starting **on/around January 16**, Leducor will start hydrovac work in three areas on/near Ellerslie Road and Heritage Valley Trail SW. This work is anticipated to take approximately **two weeks**.

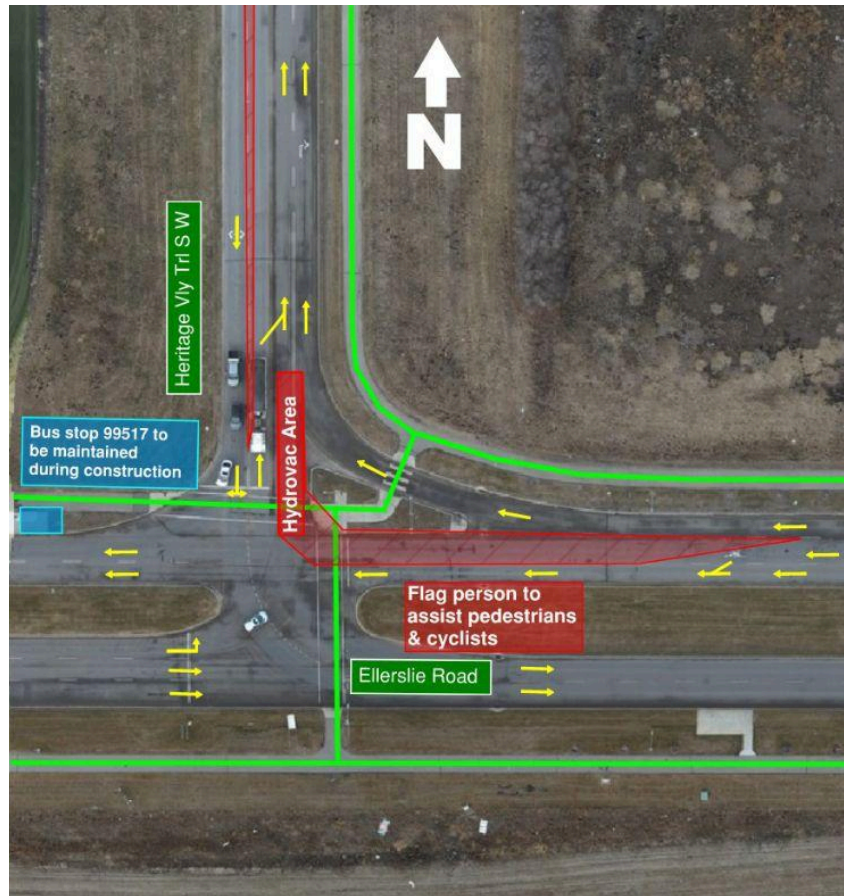
- For the first phase of work, westbound traffic on Ellerslie Road will be **reduced to one lane** near the Heritage Valley Trail SW intersection.
- For the second phase of work, northbound traffic on Heritage Valley Trail SW will be **reduced to one lane** near the access to the Heritage Valley Kiss & Ride.
- For the third phase of work, hydrovac work will occur just east of Heritage Valley Trail SW at the access to the Heritage Valley Kiss & Ride. **No lane closures** are associated with this phase.

This work and the lane closures are expected to occur during **off-peak hours** between 9:00 a.m. and 3:00 p.m and will be implemented one phase at a time. Each phase is expected to last **one or two days**.

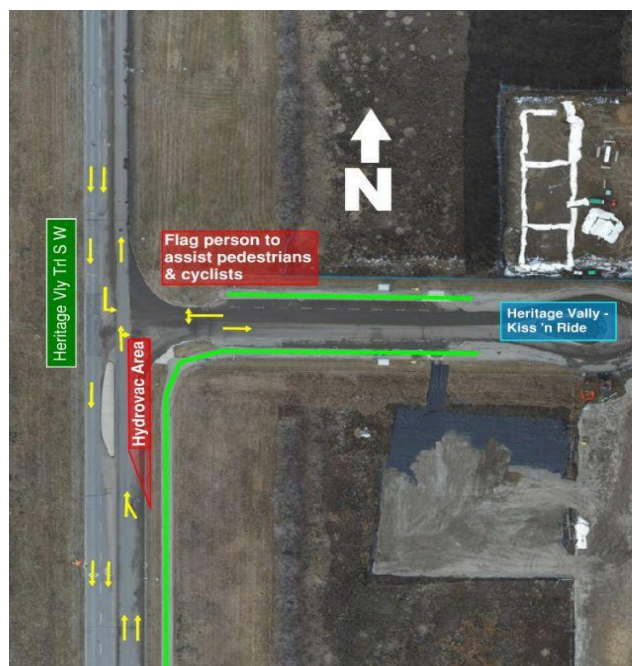
Turning lanes and bus access will be maintained. Flag persons will be on site to assist pedestrians and cyclists. Speed limits will be reduced to 40 km/hr when workers are present. Please see the maps below for details.

Hydrovac is a digging method using high-pressure water to locate utilities in preparation for construction for the future Heritage Valley North LRT Station and Utility Complex.

Phase 1 Map: Lane Closure on Ellerslie Road



Phase 2 Map: Lane Closure on Heritage Valley Trail SW



Traffic impacts

- Single left and right turn lanes will be maintained at the intersection.
- Speed limits in the work zone will be reduced to 40 km/hr in each direction.

Other impacts

- Work will occur on weekdays between 9:00 a.m. and 3:00 p.m.
- Flaggers will be on site to assist pedestrians and cyclists when work is occurring.
- The routes for pedestrians and cyclists will be maintained, and appropriate signage will be installed for the lane closures. The sidewalks will not be impacted.
- Efforts will be made to minimize noise, vibration and dust. Mitigation measures will be implemented to monitor and reduce these impacts.

For More Information

City of Edmonton (general project inquiries)

Visit: edmonton.ca/capitalsw

Email: lrtprojects@edmonton.ca

Call: LRT Projects Information Centre at 780-496-4874 (voicemail)

Ledcor Group of Companies (construction-specific inquiries)

Email: capitalinesouth@ledcor.com

Call: Capital Line South public inquiry line at 780-540-7013 (voicemail)