

102 ST. STOP

QUARTERS STOP

TAWATINÂ BRIDGE

CHURCHILL STOP

MUTTART STOP

STRATHEARN STOP

HOLYROOD STOP

BONNIE DOON STOP

AVONMORE STOP

DAVIES RAMP

DAVIES STATION

MILLBOURNE/WOODVALE STOP

GREY NUNS STOP

MILL WOODS STOP

PUBLIC ART ON THE VALLEY LINE SE



TOUR THE PUBLIC ART ON THE VALLEY LINE SOUTHEAST LRT

The **Valley Line Southeast LRT** project is adding a splash of colour and texture to communities along the route thanks to the City's **Public Art Policy**, managed by the Edmonton Arts Council.

The Valley Line Southeast LRT public art collection includes art glass, sculptures, a mosaic and a series of paintings, for a total of 14 works of art along the 13-kilometre LRT route. Behind the artworks are four Edmonton-based artists, three Alberta-based artists, one international artist, one Indigenous artist team and one Métis artist. Most of the artists consulted with locals to develop and finalize their concepts – making the pieces even more meaningful to the communities surrounding each stop along the line.

About Public Art

Public art exists in the public realm and is freely accessible to everyone. Artworks in the City of Edmonton Public Art Collection can be found in public spaces and City facilities throughout Edmonton.

Browse the interactive Online Gallery that features the Public Art Collection, plan a tour, or share with visitors: edmontonpublicart.ca

Public Art Policy : Public Art to Enhance Edmonton's Public Realm

Art in public spaces is essential for integrating art, design and creative ideas into public life. Public art:

- Actively engages citizens and artistic leaders in planning and building an inclusive, attractive, liveable, healthy, and thriving city for the future.
- Connects communities in cultural experiences that create a sense of belonging and connectedness to people, places, stories and creative ideas.
- Builds memorable urban places, neighbourhood vibrancy and unique city identity.

By investing in public art, the City of Edmonton supports the local economy and helps build an attractive, healthy and thriving city where creative spaces emerge and art, design, and culture flourish.

Edmonton Arts Council (EAC)

The Edmonton Arts Council is a not-for-profit society and charitable organization that supports and promotes the arts community in Edmonton. The EAC works to increase the profile and involvement of arts and culture in all aspects of our community.



Holyrood Stop

Holyrood Lanterns by Adah Hannah • *Holyrood Lanterns* is a community inventory of colours, textures, people, buildings, and other objects that make up the Holyrood neighbourhood. The photographs used in this project were taken by community members during a series of workshops in 2018.



Bonnie Doon Stop

Four Seasons in Silver Heights Peony Garden by Oksana Movchan • The artwork draws inspiration from the history of the Bonnie Doon Silver Heights Peony Garden, a prominent attraction and business in the area from 1923 until the 1940s. Each glass shelter represents one of the four seasons and illustrates a transformation of a peony garden throughout the year.



Strathearn Stop

Of Birds and Such by Public Studio • These contemporary dioramas depict the species and habitats that formerly surrounded the area. Public Studio created these tableaux to share concern for the current state of the planet due to humanity's impact on nature and offer a moment of reflection on the beauty of the natural world.



Mill Woods Stop

If the Drumming Stops by Tania Willard, Peter Morin and Cheryl L'Hirondelle • *If The Drumming Stops* symbolically connects transit users to stories of the Papaschase Cree territory. It is the intention of the artists to give voice to the spirit of the language, land, histories and present realities of Indigenous peoples in the current neighborhood of Mill Woods.



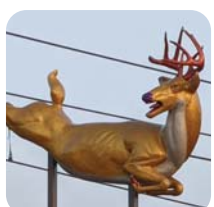
102 Street Stop

You Are Here by Hello Kirsten • Collected from a wide variety of household items, the patterns and motifs in this artwork represent the population of contemporary Edmonton. Placed at the center of the city, the message is simple: You are here. We are all here: collaborating, teaching, learning from, and inspiring one another.



Grey Nuns Stop

A Pattern Language by Karen Ho Fatt Lee • *A Pattern Language* showcases and celebrates the diversity of the surrounding community through the visual language of fabric motifs. By referencing the traditional folk and tribal textiles of the many cultural groups from the area, the artist explores the rich history of cloth, one of cross-cultural exchange and storytelling.



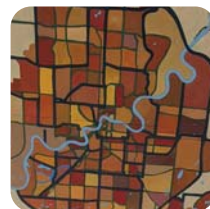
Avonmore Stop

High Jinx by Paul Freeman • This artwork is inspired by the proximity to the Mill Creek ravine and the pleasant surprise of encountering wildlife on a river valley stroll. Drawn from ongoing explorations in the artist's sculptural practice, these whimsical life-size deer merrily slide down the roofs of the transit shelter, evoking fun pastimes such as the simple joy of sliding downhill.



Muttart Stop

Best Fronds by Stephanie Jonsson • This botanically themed sculpture references the flora and fauna of the Muttart Conservatory and offers an organic contrast to its glass pyramids, so prominent in our city's skyline. Through this nature-inspired design, the artist challenges the idea that humans and nature are binary concepts.



Tawatinâ Bridge

Tawatinâ Bridge by David Garneau • This shared-use pathway features over 500 paintings of the river valley's flora and fauna, and the First Nations, Métis, and settler histories of the area. Bridging the city, the art works show the intertwined lives of the people and the non-human beings who live and travel through here.



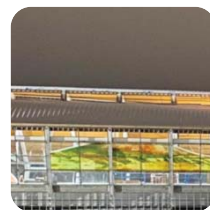
Quarters Stop

龍的傳人 / Descendants of the Dragon by Paul Reimer • This modern interpretation of traditional Chinese calligraphy in bands of steel, hand-forged using traditional blacksmithing techniques, evokes the image of a dragon. The folds and curves of the interwoven bands symbolize the movement of people on transit.



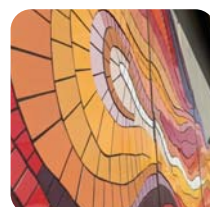
Churchill Connector at Churchill Stop

Helios by Max Streicher • The inflated sculpture consists of three white horses, suspended from above, and inspired by depictions of Helios, the personification of the sun god who daily races his fiery chariot across the sky. The horses are made of a coated polyester material that glows in the sun and changes throughout the day with the shifting light.



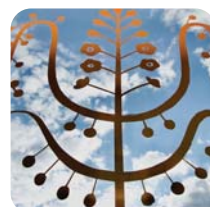
Davies Station

Fluid Landscape by Shan Shan Sheng • The large-scale activation in alternating bands of clear and translucent glass spans more than 26 windows, with imagery that subtly blends Canadian prairie, forest, lakes, and mountains, suggesting the diverse natural and cultural history in the region.



Davies Ramp

Confluence by Erin Pankratz • *Confluence* is comprised of two abstract mosaic works, one on either side of the ramp. With the artworks' organic shapes, the artist evokes the visual merging of Edmonton's sky, water, and land.



Millbourne/Woodvale Stop

of sustenance (heartening, ever-reaching, embraces between dawn and dusk) by Marigold Santos • For this work, Santos created four groupings of drawings, based on the flowers, leaves, stems, and fruit of the gooseberry plant, the highbush cranberry plant, the chokecherry plant, and the saskatoon berry plant.