

The logo for the City of Edmonton, featuring the word "Edmonton" in a white, sans-serif font on a dark blue rectangular background.

Edmonton

A scenic view of Dawson Park and Kinnaird Ravine in Edmonton, Alberta. The foreground is filled with lush green trees and grass. A wide river flows through the center of the park. In the background, the city skyline is visible under a bright blue sky with scattered white clouds.

# DAWSON PARK AND KINNAIRD RAVINE MASTER PLAN

---

What We Heard Report  
Phase 4: Preferred Concept Option  
February 2018



## Table of Contents

---

Project Overview 1

---

Engagement Plan 4

---

What We Did 6

---

What We Heard 10

---

Next Steps 28

# Project Overview

**The Dawson Park and Kinnaird Ravine Master Plan project is an opportunity for Edmontonians to work with the City of Edmonton to develop a 25-year vision and guiding principles for the park. As part of the region's green space network, Dawson Park and Kinnaird Ravine are essential outdoor places for Edmontonians to relax, learn, explore and reconnect to the North Saskatchewan River Valley.**

---

Dawson Park and Kinnaird Ravine is an established River Valley park within the North Saskatchewan River Valley, adjacent to Edmonton's downtown core. The area offers visitors the chance to run, hike, walk their dogs and cycle through the ravine landscape — an escape from the city for urban dwellers. The park provides opportunities to meet with friends, family and neighbours and access to the river for boating, fishing and relaxation.

No comprehensive planning process for the project area has been conducted since the 1970s, when the Capital City Recreation Park Concept (CCRPC) Plan was implemented. As part of the CCRPC Plan, Dawson Park was identified as a rest area that offered a 45-stall parking lot, hiking and biking trails, rest areas with rest rooms, benches, telephones and conserved natural areas.

In addition to planned infrastructure, Dawson Park currently provides visitors with an off-leash area between Dawson Bridge and Capilano Bridge, picnic tables, and granular trails for people who are visually impaired. The project area occupies

approximately 76 hectares and contains over 10 kilometres of trails, with a continuous 2.4 km stretch of trails starting at the parking lot in the south to Wayne Gretzky Drive NW to the east. As part of the 10-Year Capital Investment Agenda, The River Valley Park Renewal program has identified Dawson Park and Kinnaird Ravine Master Plan as a key project that will direct investment for the park. The City of Edmonton has started this Master Plan process for Dawson Park and Kinnaird Ravine to build on and update the planning work that was completed almost 40 years ago.

Through community consultation that reaches a broad audience using a variety of engagement tools and techniques, the City will develop a vision for Dawson Park and Kinnaird Ravine and establish the guiding principles that will form the basis of the Master Plan. Public input is a critical component in shaping the plan and the vision for the park.

This report summarizes What We Heard from the final phase of public engagement for the Dawson Park and Kinnaird Ravine Master Plan.

## Dawson Park & Kinnaird Ravine Neighbourhood Context





## The Master Plan Process

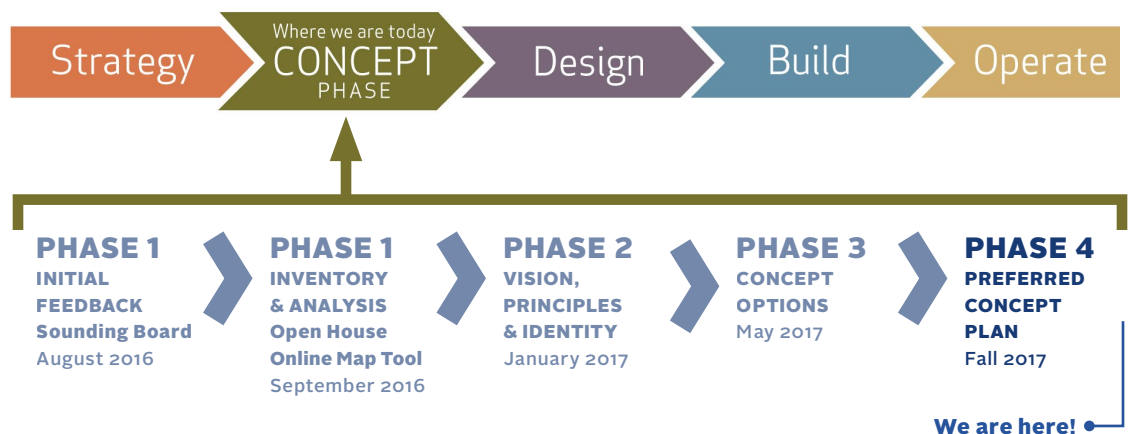
Dawson Park and Kinnaird Ravine offers an escape into nature that people love and enjoy. The park is a natural gem in Edmonton in part because of forward-looking policy, planning and community involvement. This type of planning can be traced all the way back to the recommendations of Frederick G. Todd in 1907. With the incredible growth and changing demographics that will occur around the park in the coming years, there is a need to look ahead to create a vision that protects the park while reflecting the needs of citizens and what they would like to see in the future.

The River Valley Park Renewal Program identifies a long-term strategic approach to renew parks located in the River Valley. The program is initiated by key drivers such as city policies, changing demographics, demand, recreational needs and aging infrastructure. Park renewal within the River Valley is based on an analysis of the physical condition and functionality of park elements as well as the ability to meet existing (and future) capacity. Parks with safety concerns, decreased usability and aging infrastructure are considered 'higher needs' parks. Without renewal, existing park infrastructure that is close to the end of its useful life will continue to deteriorate, decreasing park functionality, usability, safety and cost-effectiveness.

The Master Plan for Dawson Park and Kinnaird Ravine will establish a vision and management plan for the next 25 years, and build upon existing plans, policies and initiatives while identifying public needs and priorities. It will provide direction for environmental management, as well as recommendations for civic, cultural and recreational uses that are appropriate to the park.

The Master Plan is currently in the CONCEPT Phase of the Park and Facility Development Process. In this phase, public consultation will be critical to informing the Master Plan from now until its completion in the Spring of 2018. Existing policy, City Administration and public input will inform the process and outcome of the CONCEPT Phase, at the end of which the Master Plan report and concept plan will be submitted to City Council as part of the 2019–2022 budget cycle to seek funding for implementation.

*City of Edmonton's Park and Facility Development Process. This project is in the CONCEPT phase.*



*Dawson Park and Kinnaird Ravine Master Plan Timeline (within the CONCEPT phase).*

# Engagement Plan

**An engagement strategy using multiple consultation techniques will facilitate the ability for the public to provide input into the development of the Dawson Park and Kinnaird Ravine Master Plan. Four phases of public engagement will help develop a Master Plan for the park that responds to community needs and City priorities.**

---

Policy C513 for Public Involvement is guided by the City of Edmonton's Public Involvement Framework which outlines the strategic approach to be used in all City hosted public involvement processes. As outlined in Policy C513, the City of Edmonton is committed to involving stakeholders and the public in the Master Planning process. During the engagement, Edmontonians were asked to identify key uses, needs and strategies for the park and participate in an ongoing dialogue about what Dawson Park and Kinnaird Ravine might look like in the future. Ecological and infrastructure needs, as well as how this space can support the surrounding neighbourhoods and the larger Edmonton community was discussed.

The public was invited to participate in four phases of engagement to help develop the Master Plan for Dawson Park and Kinnaird Ravine. Each phase includes internal and external stakeholder sessions, online engagement and public open houses. External stakeholders include interest groups, neighbourhood groups and other organizations who have expressed an interest in being more deeply involved in the Master Plan process. Internal stakeholders are City of Edmonton employees who can provide input or advice on specific aspects of the park.

Online engagement, in the form of surveys, interactive mapping and activities, gave the public an opportunity to provide their input at their convenience. This option was offered to facilitate input from those who were unable to attend in-person sessions and for those who want to provide additional comments. Material shared at public events was also available online: [edmonton.ca/dawsonparkmasterplan](http://edmonton.ca/dawsonparkmasterplan)

## **Phase 1: Project Introduction, Inventory & Analysis**

August – September 2016

In Phase 1, the City received feedback on the existing conditions of the park. We wanted to know what the public likes about the park, why it is important to them and what they want to see in the future. Presented information included the project scope and boundaries, key existing features, systems and functions of the park and the relationship of the Dawson Park and Kinnaird Ravine Master Plan with parallel projects such as BREATHE: Edmonton's Green Network Strategy.

The public and stakeholder input that was captured identified key dreams, desires, issues and themes that informed the development of a vision, identity and program for the park.

## **Phase 2: Vision, Principles & Identity**

January 2017

In Phase 2, the City asked the public to help improve our understanding of the opportunities and constraints in the park to help inform the vision. In addition, the themes and concerns that emerged from Phase 1 were available to the public in a What We Heard Report and helped us choose which park elements would be included in the Phase 2 engagement activities.

The public and stakeholders provided input on the material presented, prioritizing words and phrases for the vision statement and choosing park elements that they wanted to see in the concept options.





### Phase 3: Concept Options

Spring 2017

The City sought feedback on two concept options for the park in Phase 3. The refined themes and concerns that emerged during Phase 2 were integrated into the presentation of two distinct concept options for the park.

Variations on proposed activities, features and elements for the park were included in the two concept plans. The City asked the public and stakeholders to choose which vision they preferred and to prioritize the various elements proposed in each.

### Phase 4: Preferred Concept Plan

November 2017

In Phase 4, the City presented a refined concept plan for the park that integrated the priorities and feedback received in Phase 3.

The public and stakeholders were provided with the opportunity to give feedback on the preferred concept plan to help fine-tune the program and concept plan. This feedback supported the development of a preferred concept plan that responds to the needs of the community and park users. The public was also provided with information about next steps and how to stay involved in the future park development.

#### Public Involvement in the Master Plan Process

The City of Edmonton prioritizes public engagement as part of the Master Plan process. It is integral to decision-making.

### Discover

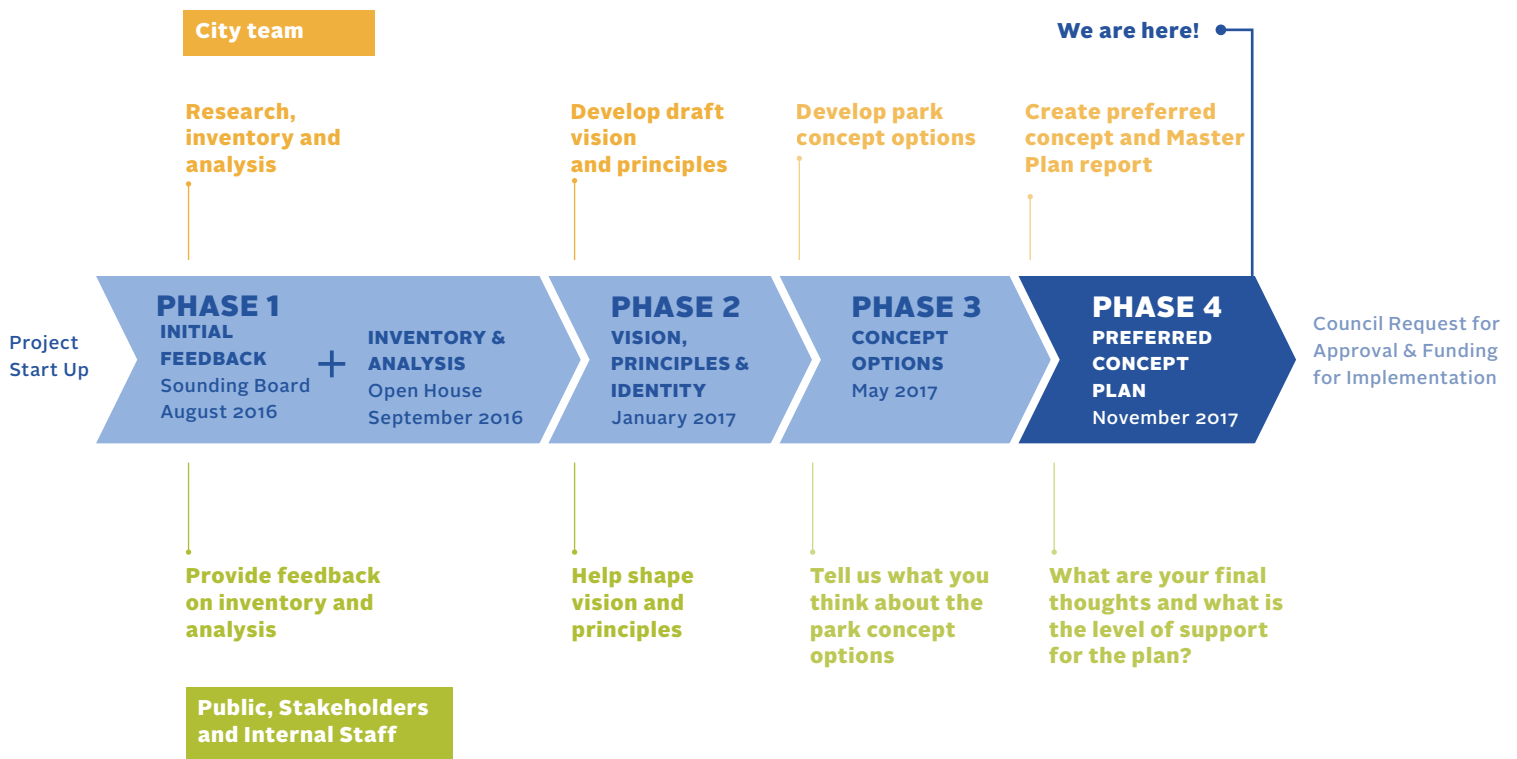
As part of the 10-Year Capital Investment Agenda, The River Valley Park Renewal Program has identified Dawson Park & Kinnaird Ravine for Master Plan development to direct investment for the park.

### Develop

Along with City priorities and technical data, public input will be used at each stage in the process to develop the Master Plan.

### Deliver

The goal is to fund the next stages of implementation as part of the 2019–22 budget cycle.



# What We Did

**In November 2017, the City presented a consolidated vision and concept plan for Dawson Park and Kinnaird Ravine for public and stakeholder input. The City wanted to understand the level of public and stakeholder support for the concept plan and its various components.**

---

In this phase, a consolidated vision and concept plan was presented to the public and stakeholders for feedback. The engagement process was designed to ensure that perspectives with potentially diverging insights were heard and engaged.

## What were the engagement opportunities?

Four opportunities for participation were available to stakeholders and citizens during this phase:

### Public Open House

November 21, 2017 | E4C, Alex Taylor School Gymnasium, 5-8pm  
69 Attendees

Visitors to the Dawson Park and Kinnaird Ravine Phase 4 open house were welcomed at the door and provided with an overview of the event setup. Participants had the opportunity to read background information on the project, including the City's decision-making process and the various inputs that guided the plan. The vision and concept plan for the park was presented in a series of five key areas: Gateways, Slopes and Trails; Top-of-Bank Parks; Main Activity Node; Kinnaird Ravine; and River Edge.

Finally, participants were asked to comment on their overall support for the Master Plan as well as the proposed park elements and management practices at four activity stations.

Forty-eight of the attendees came from adjacent neighbourhoods; the remainder of attendees came from across the city. Feedback from the event survey reported mixed feedback on the event advertising. Participants enjoyed the layout of the event, the presentation material and the ability to speak to staff with their questions and concerns.

### Online Survey

November 24 - December 8, 2017 | 271 survey respondents

The presentation material from the open house was provided on the project website for the public to view on their own time. Participants of the online survey were encouraged to read the open house material prior to beginning the survey.

The survey outlined the main features in the Concept Plan as well as some of the management practices proposed in the Master Plan. Participants were asked to provide their level of support for the concept plan and management practices and were given the opportunity to leave open-ended comments.

### External Stakeholder Workshop

November 22, 2017 | E4C, Alex Taylor School Gymnasium, 5:30 – 7:30pm  
10 Participants

Participants of the external stakeholder workshop were welcomed to the event and given half an hour to peruse the open house presentation material. Participants were split into three groups and asked to contribute to small group discussions on the following themes:

- » Park Use and Amenities
- » Connectivity and Circulation
- » Nature and Ecology
- » Overall Concept Plan

Stakeholders confirmed elements of the plan that they supported and provided suggestions for areas they felt could be improved through facilitated group conversations. Participants were also provided with surveys with the same questions from the open house and online survey in which they could provide comments during the evening or to be mailed in at a later date.



#### Represented Organizations:

- » Edmonton and Area Land Trust
- » Edmonton Dragon Boat Racing Club
- » Edmonton River Valley Coalition
- » Friends of Kinnaird Ravine
- » Off-Leash Ambassador
- » Parkdale Cromdale Community League
- » River Valley Parks
- » RiverWatch
- » Sierra Club Canada

#### Internal Stakeholder Open House

A two-hour open house on the morning of November 21, 2017 allowed city staff to provide their input on the consolidated vision and concept plan for Dawson Park and Kinnaird Ravine. The staff who attended provided their overall support for the plan as well as recommendations for implementation and connections with other City initiatives.

#### Additional Public Outreach Methods

In addition to the City's needs assessment for the park, which involves understanding the park's existing use and activities, the City reached out to the following communities throughout the Master Plan process to gain a more holistic understanding of public needs for the park:

- » Braille Trail users through an online survey
- » Accessibility and Senior Friendly Committees with the City of Edmonton
- » Indigenous Nations through outreach efforts associated with multiple City projects including BREATHE: Edmonton's Green Network Strategy, the River Access Strategy and the Southwest Ribbon of Green Master Plan
- » Members of the community who presently rough sleep in the park or who have previously camped in the park to inform the service needs of this population
- » Multi-cultural communities through workshops aided by the Multicultural Health Brokers Co-op
- » Consultation and discussions with the river users as part of the development of the River Access Strategy

#### How were engagements advertised?



#### What background information was provided?

Participants of all engagement opportunities in Phase 4 were provided with information on the project process and approach to decision-making. Public input received during previous phases of engagement was summarized, including its influence on the consolidated concept plan presented in Phase 4. Finally, an overview of the park history and the evolution of the landscape was presented.

## What questions were asked?

Four main questions were presented to encourage and direct feedback:



**Thinking about Park Use and Amenities, do you agree that the plan achieves the goals of the guiding principles?**

Participants were presented with a map of the park use and amenities in the concept plan. They were asked to comment on their level of agreement with the proposed amenities and programs and if they thought the goals and objectives of the guiding principles were met.



**Thinking about Connectivity and Circulation, do you agree that the plan achieves the guiding principles?**

Participants were presented with a map of the proposed trail network, entrances and circulation features (i.e. stairs and bridges). The open-house boards (available online) also included a signage plan. Participants were asked to comment on their level of agreement with the proposed park access and circulation features and if they thought the goals and objectives of the guiding principles were met.



**Thinking about Nature and Ecology, do you agree that the plan achieves the guiding principles?**

Participants were presented with a map of the proposed vegetation cover and natural area management in each area of the concept plan. They were asked to comment on their level of agreement with the proposed natural area management for Dawson Park and Kinnaird Ravine and if they thought the goals and objectives of the guiding principles were met.



**Do you support the Master Plan?**

After reviewing all the presentation material, participants were asked if they supported the Master Plan in its entirety. Participants were provided with opportunities to share a rationale for their decision during in-person events as well as online.

## How did we analyze the feedback?

A rigorous process was used to analyze the engagement feedback. Comments from all sources were transcribed into a spreadsheet and tagged for ideas, recommendations and themes. Quantitative information, such as 'votes' of support for various aspects of the plan are summarized and presented graphically in this report. Both types of information helped to inform decisions for the Master Plan.



## Who participated in Phase 4?



69 attendees



10 attendees



271 participants



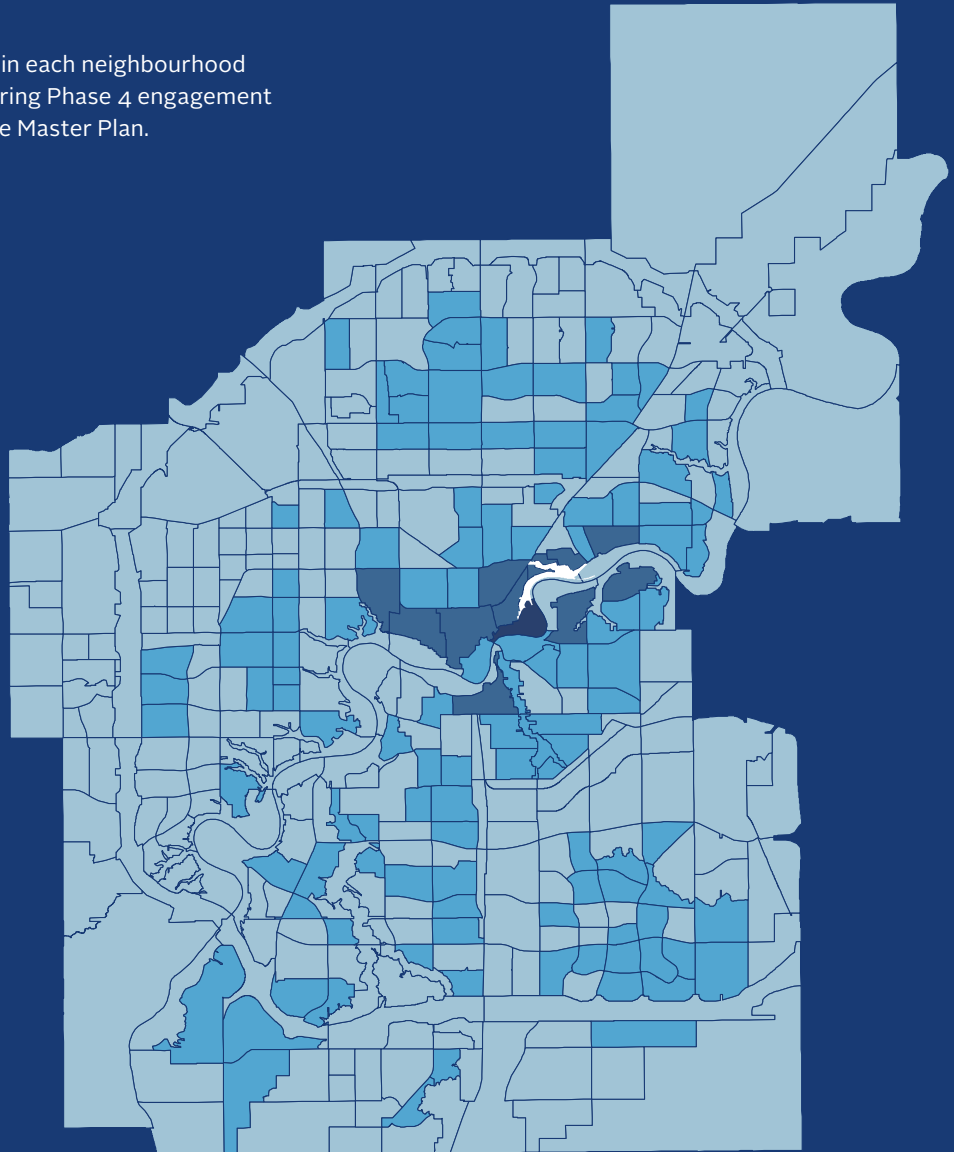
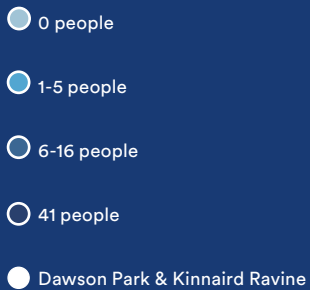
13 attendees

# 350

engaged citizens

## City-wide Engagement

This map depicts the number of people in each neighbourhood who participated in-person or online during Phase 4 engagement for the Dawson Park and Kinnaird Ravine Master Plan.



# What We Heard

Phase 4 of engagement allowed participants to share their thoughts on the consolidated park vision and concept plan. Below is a summary of themes that emerged through open-ended responses during in-person and online engagement events. Many comments related to items that participants want to see addressed in the Master Plan.

---

## Themes Emerging from Phase 4 Feedback:

### Accessibility

Participants think that the proposed concept plan increases accessibility into and throughout the park for a wide variety of park users and creates more connections into the surrounding communities.

### Enforcement

Participants wanted to know how the proposed features, such as the off-leash area, would be enforced. They also wanted to know if the plan includes any additional policing of the park.

### Amenities

We heard from many that the proposed amenities will increase their ability to use the park. Some wanted to see even more amenities, including washrooms and water bottle fill stations.

### Impacts

Participants, particularly those who live in adjacent communities, shared concern over impacts to their community, including those resulting from increased park use and street parking.

### Suspension Bridge

One of the most popular discussion topics was the suspension bridge. We heard a split reaction, with positive and negative comments relating to the bridge and its impacts.

### Development

Some participants appreciated the proposed infrastructure improvements, while others thought the plan included too many trails and built facilities.

### User Conflict

Some participants want to know how the plan will address user conflict on trails, particularly with pedestrians, cyclists and off-leash dogs.

### Informal Camping

Participants feel that the proposed plan does not address the informal camping occurring in the park and its impacts, including garbage from abandoned camp sites.

### Restoration

Many participants are excited about the proposed restoration in the park, especially the daylighting of Rat Creek and restored vegetation.

### Cost

Participants shared their concerns over the cost of the implementation and maintenance of the proposed features in the concept plan.

# 350

**engaged citizens**

**1,121**  
open-ended  
comments

**1,180**  
preferences

**2,301**  
in-person and online  
interactions

---

“The proposal looks great! You’ve really listened to the community. But still concerned that no one has addressed homelessness which has been brought up in all 3 phases!”

“The plan makes Dawson Park a focal point and provides access to other areas.”

“By trying to over achieve the Connectivity for these areas you are impacting the communities around it. Having access points in residential areas will increase vehicle, bicycle and human traffic on residential streets that are not made to accommodate increased traffic.”

“I support all aspects of the stated plan. I hope the improved suspension bridge increases access to and use of the park.”

“The enhanced connectivity increases safety, access, diversity of users, connects to neighbouring communities, and connects to NS River Valley and Ravine system.”

“Go around the block and use the new or old stairs instead! We walk so we get exercise. The bridge will mar one of the nicest views in this city.”

“River valley parks present great opportunity for grade 1 - 6 education.”

“Like the idea of moving back toward natural grasses and vegetation, if possible, if feasible, maintainable.”

“Love the off-leash decision!”



# What concept was presented?

Those who participated in Phase 4 of engagement in-person or online were presented with a comprehensive vision and concept plan for Dawson Park and Kinnaird Ravine. The following pages provide a summary of the key features proposed in the Master Plan as well as the level of agreement from participants.

The vision statement for the park presented in Phase 4 engagement is:

Dawson Park and Kinnaird Ravine is an ecological corridor in the city that balance recreational activity with habitat conservation and restoration. The park offers an escape from the city and year-round access to the North Saskatchewan River and Ravine System in a safe and inclusive environment for Edmonton's diverse and growing population.

The Dawson Park and Kinnaird Ravine Master Plan aims to promote ecological protection and restoration, provide amenities and programs complimentary to a River Valley park and improve access and circulation for all visitors. The plan to the right highlights key features of the Master Plan.

A more detailed description of proposed features can be found in the Phase 4 engagement presentation material online at [edmonton.ca/dawsonparkmasterplan](http://edmonton.ca/dawsonparkmasterplan)







Kinnaird Suspension Bridge

Prairie Garden in Kinnaird Park

Restored Rat Creek

NORTH SASKATCHEWAN RIVER

250 m N



# Park Use & Amenities

The following material was presented at the open house and online to inform participants of components in the Master Plan related to Park Use & Amenities.

Proposed activities are based on public input, a needs assessment, City priorities and environmental sensitivities in the park. Key features in the Master Plan include:

## Informal Use

- » Trail-based activities (e.g. running, cycling, snowshoeing)
- » Picnicking, gathering, enjoying river views
- » Nature appreciation and interpretation
- » Potential for community / cultural / winter programming

## Festivals and Events

- » Running meets, orienteering, boating races, charity walks and art / winter events

## Education and Play

- » New natural play elements
- » Potential for programming with an educational / community group

## River Access

- » Accessible boat launch and dock
- » Potential expansion of facilities (Expansion of the amenity building and/or the boat launch may occur if there is partner interest in providing increased programming based out of Dawson Park.)

## Dogs Off Leash

- » Off-leash use along the multi-use trail and Cromdale top-of-bank park
- » Leash-up zone around the restoration at Rat Creek







# Park Use & Amenities

268 online preferences  
170 online comments  
33 in-person preferences  
58 in-person comments

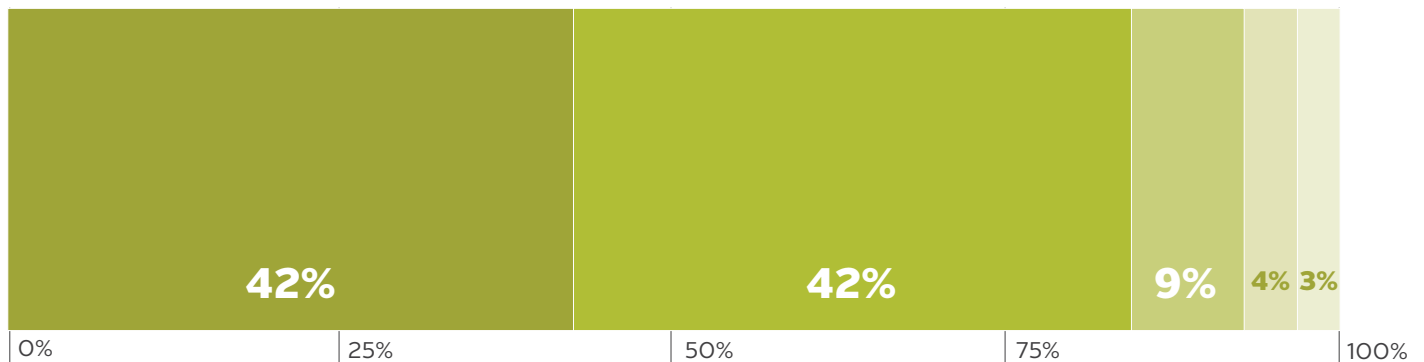
After reviewing the presentation material and concept plans, participants were presented with a set of Guiding Principles related to Park Use & Amenities that were used to develop the Master Plan. They were then asked if they felt the plan achieves the goals that the Guiding Principles set out for the park.

## Guiding Principles:

- » The park should be a place to experience rejuvenation and health benefits associated with being in nature.
- » The park should be active in winter months and should incorporate winter experiences.
- » The cultural and natural heritage of the site should be celebrated and should reflect the layered history of the site.
- » Amenities and programs in the park should be appropriate to the site's environmental sensitivities while meeting the recreational needs of a growing population.
- » Community partnerships and community stewardship of the park should be promoted.
- » User conflict should be mitigated.

## Do you think the plan achieves the goals of the guiding principles?

■ STRONGLY AGREE    ■ SOMEWHAT DISAGREE  
■ SOMEWHAT AGREE    ■ STRONGLY DISAGREE  
■ NEUTRAL





**Participants feel the plan achieves the goals of the guiding principles because:**

**...it provides a variety of amenities and recreational opportunities for different users.**

Participants feel the plan is well balanced and provides a variety of amenities for a broad spectrum of users. The plan's off-leash area and multi-use trails will increase park usage for dog walkers, cyclists and pedestrians. Some participants stated their desire for more amenities, including washrooms and water bottle fill stations in the eastern portion of the park. Others want to see more emphasis on winter use.

**...it balances ecological and recreational needs in the park.**

Participants feel the amenities presented are low-impact and maintain the natural character of the park. They appreciate that amenities are included in disturbed areas of the park while natural areas are protected.

**Participants feel the plan does not achieve the goals of the guiding principles because:**

**...it appears to have too many amenities.**

Participants showed concern over the increase in amenities and their impact on costs (maintenance and implementation) and environmental sensitivities. Some participants do not see a need for new amenities such as new play areas and gathering areas with constructed features.

**...they perceive conflicts from proposed amenities.**

Participants commented that the plan does not offer a solution or concrete plan for addressing trail user conflict, particularly around the off-leash and cyclist use of the multi-use trail. Some feel that impacts to surrounding communities relating to parking, safety and policing have not been considered in the plan. Some also questioned how the plan would affect those camping in the park.

---

“Provides usage opportunities to a broad spectrum of users...”

“It is great to have a park with so many ways to enjoy it for all ages”

“There is a small off-leash dog area included; leash-up in the more sensitive and multi-use areas to mitigate user conflict.”

“In order to accommodate more people to take advantage of the park expansion, I think we need to improve on parking and access to the park.”

“Do I need all this stuff to enjoy my surroundings in nature?”

“The break in off leash... seems very inconvenient.”





# Connectivity & Circulation

The following material was presented at the open house and online to inform participants of components in the Master Plan related to Connectivity & Circulation.

Visitors to the park value its connection to the River Valley trail network and its accessibility from surrounding communities. Key features in the Master Plan include:

## Pedestrian Circulation

- » All trails in the park may be used for multiple activities (i.e. walking, jogging, hiking, etc.)
- » The multi-use regional trail, Braille Trail and pathways near the activity node provide an accessible connection for users with limited mobility to experience the park and river views
- » Enhanced connectivity into the park from Jasper Avenue to improve access from adjacent communities
- » A suspension bridge and top-of-bank entrances with wayfinding signs improve connections to surrounding communities
- » A new trail in Kinnaird Ravine improves the connection to Stadium Station

## Cyclist Circulation

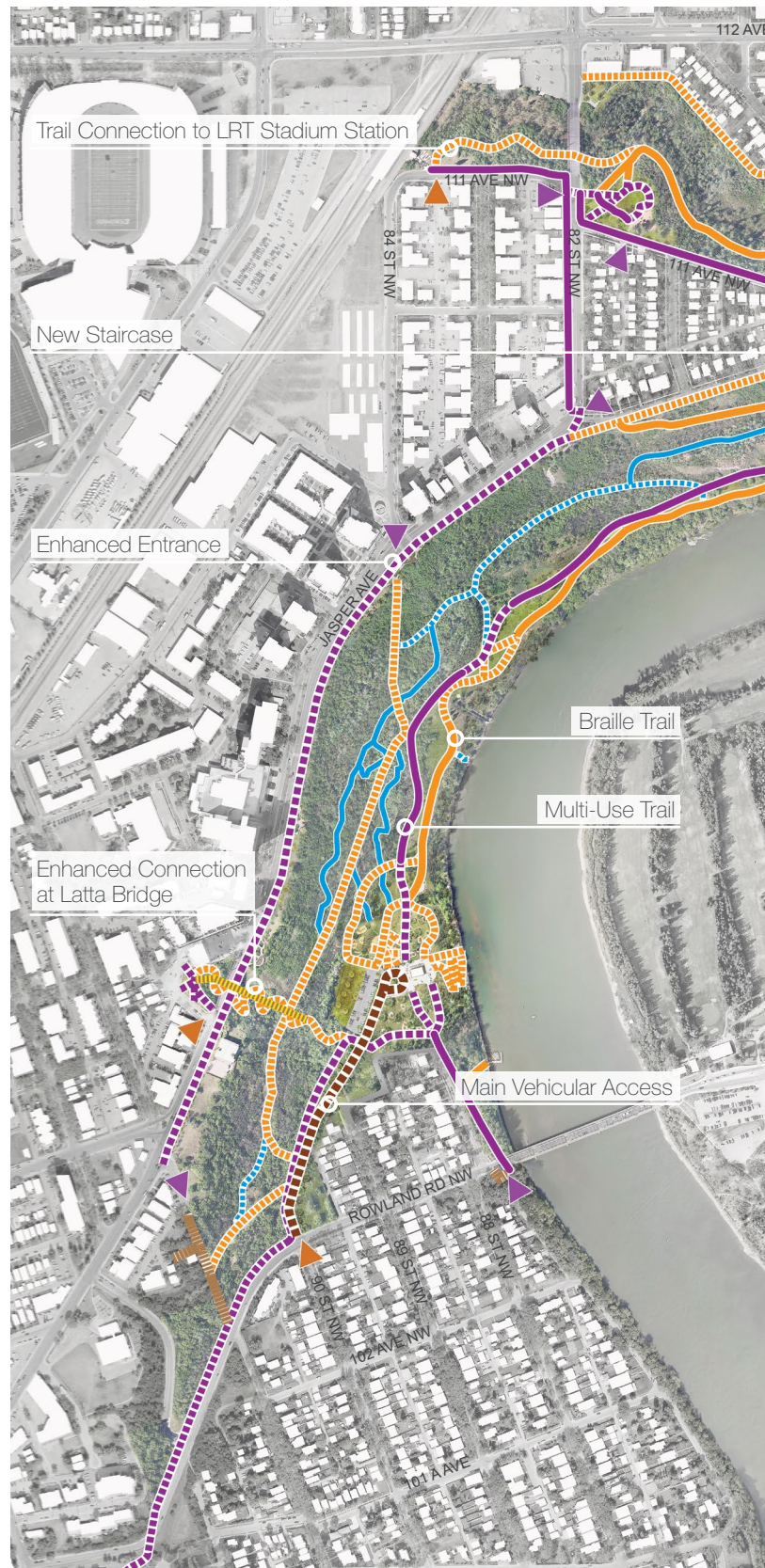
- » All trails in the park may be used by cyclists with varying experiences and levels of difficulty.

## Vehicular Circulation

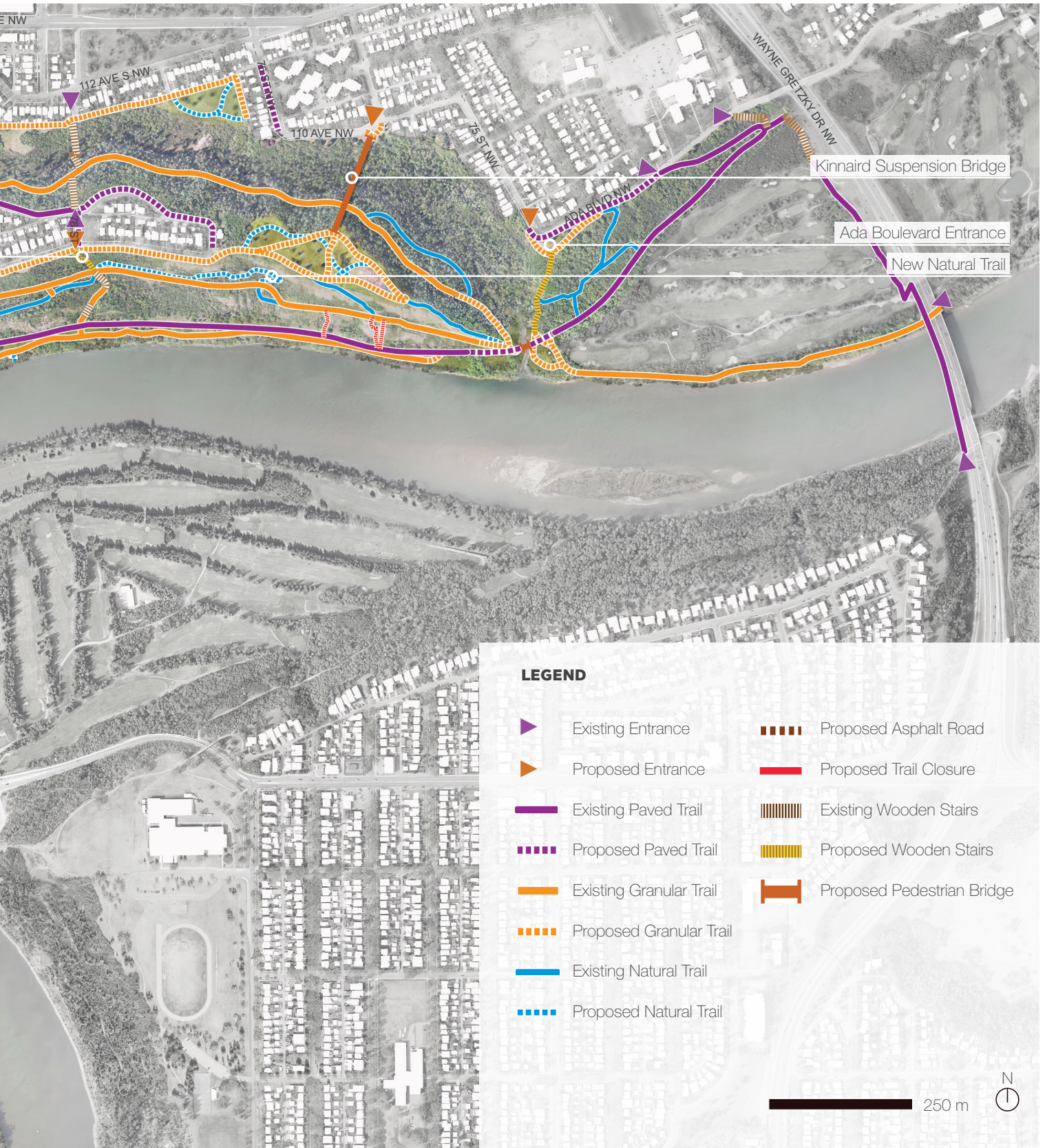
- » Public vehicular access is restricted to the southern portion of the park by a dedicated access point which connects to the parking lot and a vehicle turnaround.

## Winter

- » The paved, multi-use trail will be cleared of snow.
- » Other trails may be used for winter activities including informal cross-country skiing and snowshoeing.







# Connectivity & Circulation

269 online preferences  
135 online comments  
14 in-person preferences  
27 in-person comments

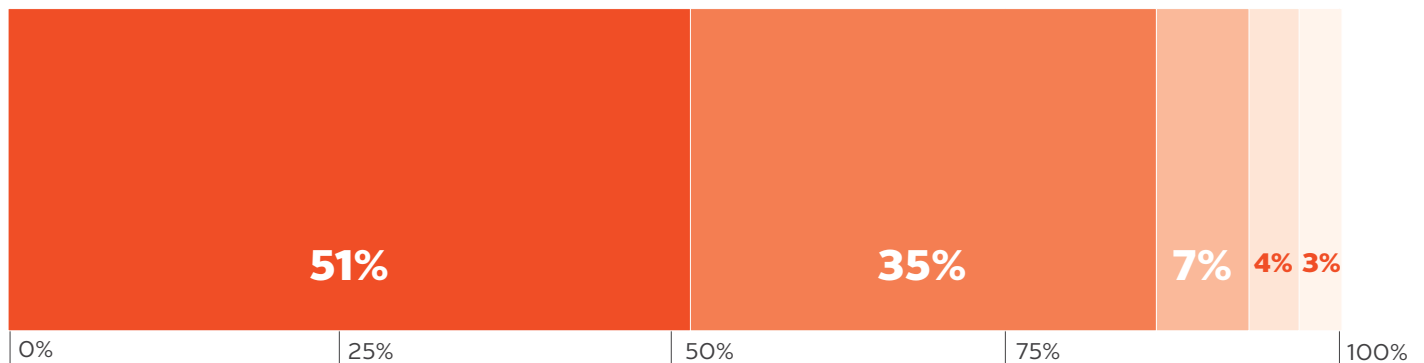
After reviewing the presentation material and concept plans, participants were presented with a set of Guiding Principles related to Connectivity & Circulation that were used to develop the Master Plan. They were then asked if they felt the plan achieves the goals that the Guiding Principles set out for the park.

## Guiding Principles

- » Dawson Park and Kinnaird Ravine should be a safe and secure space for all who occupy the park.
- » The park should be accessible and welcoming to all people and should support a diversity of park users.
- » The park should serve neighbouring citizens and Edmonton's broader community.
- » The park should provide Edmontonians a connection to the North Saskatchewan River Valley and Ravine system.
- » Dawson Park and Kinnaird Ravine will be connected with the City's active transportation network through access and trail connections.

## Do you think the plan achieves the goals of the guiding principles?

STRONGLY AGREE    SOMEWHAT DISAGREE  
SOMEWHAT AGREE    STRONGLY DISAGREE  
NEUTRAL





**Participants feel the plan achieves the goals of the guiding principles because:**

**...it increases accessibility to the park.**

Participants appreciate enhanced gateways with greater visibility and improvements to the trail system. Some would like to see even more universally accessible park entrances.

**...it introduces new connections and new routes in the park.**

Participants like that there are more options to enter and exit the park. The trail to the LRT Stadium Station is especially popular. Some appreciate the connection provided by the suspension bridge to communities to the north.

**...it brings more users into the park.**

More options to enter the park are positive for many different user groups. Some want to see more detail on river connectivity for boaters.

**Participants feel the plan does not achieve the goals of the guiding principles because:**

**...it is too complex.**

Participants feel the plan is too overdeveloped (i.e. too many trails) and does not prioritize environmental stewardship. Some do not see the need for new entrance points, such as staircases and the suspension bridge.

**...they feel it does not address safety concerns.**

Participants want more detail on how recommendations in the plan will be enforced and how trail conflict will be reduced.

**...they feel it will impact surrounding communities.**

Participants from surrounding communities want to understand the impacts of new access points, such as the suspension bridge and new staircases, on parking and potential increases in crime in their neighbourhoods.

“I think the suspension bridge will open the area up to use and enhanced imagination for use.”

“Great new dedicated vehicle access to Pavilion Park. This will lighten the traffic along the residential streets.”

“Trail connections to transit are great.”

“The suspension bridge does meet goals for access, but is intrusive to neighbors. Such a good idea but not feasible in this site.”

“Current access points are very abundant, some are just not maintained. So why put in even more and create additional maintenance challenges.”



# Nature & Ecology

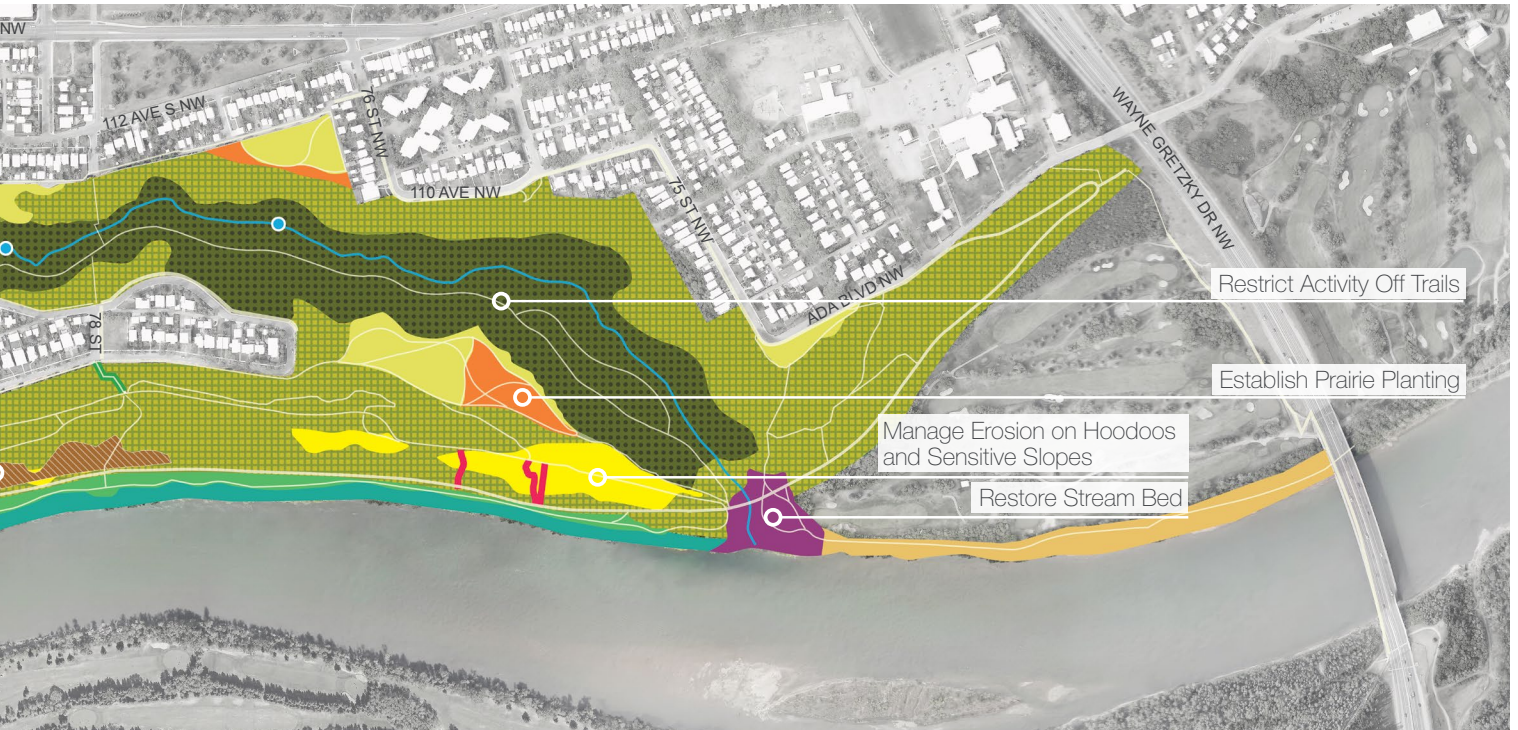
The following material was presented at the open house and online to inform participants of components in the Master Plan related to Nature & Ecology.

The Master Plan focuses on the maintenance and enhancement of ecological connections. Key features in the Master Plan include:

- » Areas of existing high-quality habitat, ecological connections and native vegetation are protected.
- » Activity in the park occurs on trails and in areas that are already disturbed, encouraging people and dogs to stay out of sensitive natural areas.
- » Where there are sensitive slopes, these areas will be managed for erosion.
- » Fences or natural barriers in combination with public education efforts are recommended to protect the areas of highest sensitivity, such as wetlands and the hoodoos.
- » Restoration along the river edge, along pathways and in top-of-bank parks enhances wildlife habitat.
- » The City will explore options for managing invasive species on the River Valley slopes and the river edge.







**LEGEND**

- Restore Rat Creek
- Establish Prairie and Native Shrubs
- Manage Sandy Shoreline
- Manage Sensitive Slopes
- Manage Mixedwood (White Spruce) Forest
- Manage Mixedwood Forest and Closed Shrub
- Maintain Turf and Manicured Vegetation
- Restore Native Ground Cover
- Maintain and Restore Riparian Vegetation
- Maintain Areas of Native Grasses
- Disturbed Landscape / Hardscape



# Nature & Ecology

265 online preferences  
107 online comments  
12 in-person preferences  
28 in-person comments

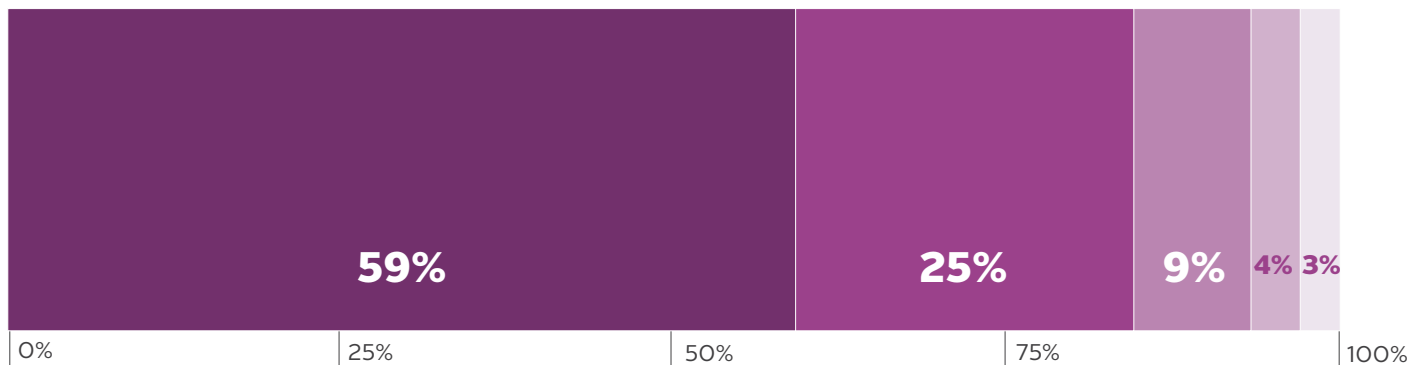
After reviewing the presentation material and concept plans, participants were presented with a set of Guiding Principles related to Nature & Ecology that were used to develop the Master Plan. They were then asked if they felt the plan achieves the goals that the Guiding Principles set out for the park.

## Guiding Principles:

- » The natural character of Dawson Park and Kinnaird Ravine should be maintained.
- » Sensitive species and habitats in the park should be protected.
- » Rehabilitation and restoration of natural systems throughout the park should be promoted.
- » Improvements to the park should be sustainable, maintainable and low impact.

## Do you think the plan achieves the goals of the guiding principles?

STRONGLY AGREE    SOMEWHAT DISAGREE  
SOMEWHAT AGREE    STRONGLY DISAGREE  
NEUTRAL





**Participants feel the plan achieves the goals of the guiding principles because:**

**...it incorporates restoration work throughout the park.**  
Participants are receptive to the proposed restoration in the park, especially the daylighting of Rat Creek.

**...it maintains the natural character of the park.**  
Participants feel that the natural character of the park is maintained in the plan and that there is a balance between keeping the park natural and making an enjoyable space for people to use. They appreciate that existing vegetation is maintained and disturbed areas are used for activity.

**Participants feel the plan does not achieve the goals of the guiding principles because:**

**...it is not explicit in how park use will be enforced in sensitive areas.**  
Participants are unsure how park use will be enforced, particularly with dogs off leash in restored areas.

**...it does not address the clean up of garbage and debris.**  
Participants are concerned about garbage from historical dumping and abandoned campsites in the park. They want to ensure the City will address these safety and environmental concerns before introducing new features.

**...it seems labour and cost intensive.**  
Restoration and invasive species removal can be costly and labour intensive. Participants are unsure if the effort is worth the proposed results.

---

“As a kid, I spent many hours playing in the Kinnaird Ravine and I am happy to see it and Rat Creek being rehabilitated. Rat Creek needs considerable clean-up and restoration work.”

“Nice balance between leaving it natural, but also making it an enjoyable space for people to use.”

“You cannot keep natural vegetation (especially sensitive species) and restore natural systems and still have it be sustainable, maintainable and low impact.”

“Appears to be an ambitious plan which may not be easily maintained.”



# Do you support the Master Plan?

268 online preferences  
542 online comments  
51 in-person preferences  
54 in-person comments

After reviewing all of the presentation material, participants were asked to state their level of support for the Master Plan on a scale of 5-1 (5 being strongly support and 1 being do not support). They were then asked which areas of the plan they supported and what changes would increase their level of support for the Master Plan. The results are summarized on the following page.

---

“I love your proposed trails and new, open and welcoming access points. I especially like the huge area of off leash dog trails. This is something I would make a special trip down to enjoy.”

“I like that the off leash will be maintained”

“I am supportive of a more connected Edmonton, however I feel that the proposed suspension bridge is going a step too far.”

“We do not need anymore playgrounds in the city. There are plenty of wonderful things for children to do in this area without building a formal playground with swings and slides.”

“I like how there are more access points to the park. I believe this will lead me to walk/cycle more and drive less.”

“I am not clear on parking capacity and accessibility for those with mobility challenges.”



## What areas of the plan do you support?

### Ecological restoration and protection

- » Support for restoration, especially the daylighting and restoration of Rat Creek
- » Some concern over the maintenance requirements of restoration efforts

### Greater connectivity

- » Support for proposed trails and the multi-user trail system, especially the connection to LRT Stadium Station in Kinnaird Ravine
- » Excitement for the suspension bridge with some apprehension around the feasibility of the project

### Encouraging greater use of the park

- » Support for elements (i.e. washrooms, trail network) that support use by a wide spectrum of the population

### Increasing the feeling of safety

- » Support for increasing park access and updating the amenity building to improve visibility

### Lower impact amenities

- » Some participants appreciate the lower impact of the amenities proposed in the plan

### Natural trails

- » Support for the maintenance of the natural trail network

### Off-leash area

- » Support for the maintenance of much of the off-leash area



## What would increase your level of support for the plan?

### Less impact to surrounding communities

- » Some participants feel that increased park use and elements (i.e. the suspension bridge) would increase safety concerns and parking impacts in surrounding neighbourhoods

### Address conflict between park users on trails

- » Participants want more detail on how conflict on multi-user trails will be mitigated

### Make the plan less intrusive

- » Some participants want to see the plan scaled back with fewer amenities and alterations to the existing park
- » Many participants prefer to have a focus on restoration over recreation

### Decrease the cost and simplify the plan

- » Participants shared concerns over the cost of the plan

### Include a plan to remove garbage from the park

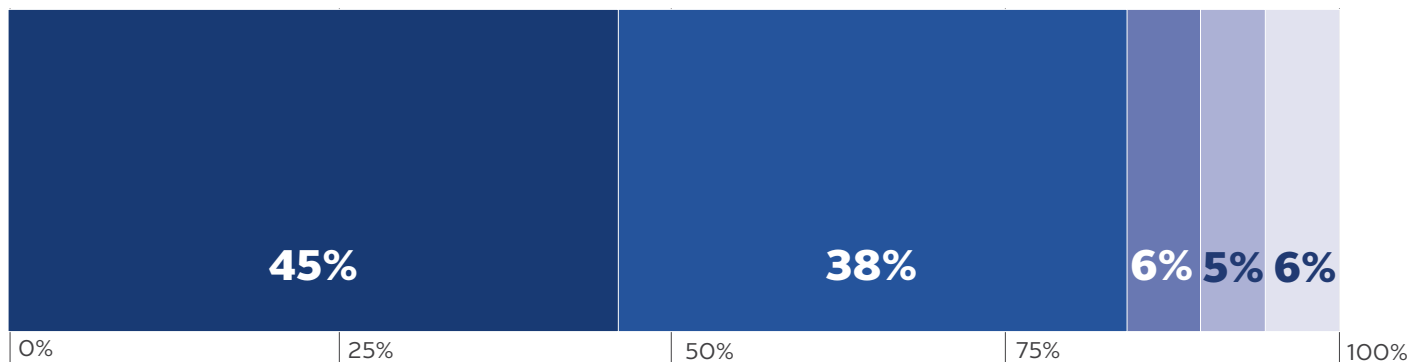
- » Participants want a clear plan for the removal of garbage from abandoned campsites in the park and a plan to address garbage from historical dumping along the river edge

### Off-leash area

- » Some participants feel the off-leash area is too extensive and conflicts with the restoration goals

### Include amenities for greater user comfort and safety

- » Some participants want more amenities to support greater use of the park (i.e. more washrooms)



# Next Steps

**Thank you to all participants who provided their feedback during all phases of engagement for the Dawson Park and Kinnaird Ravine Master Plan!**

---

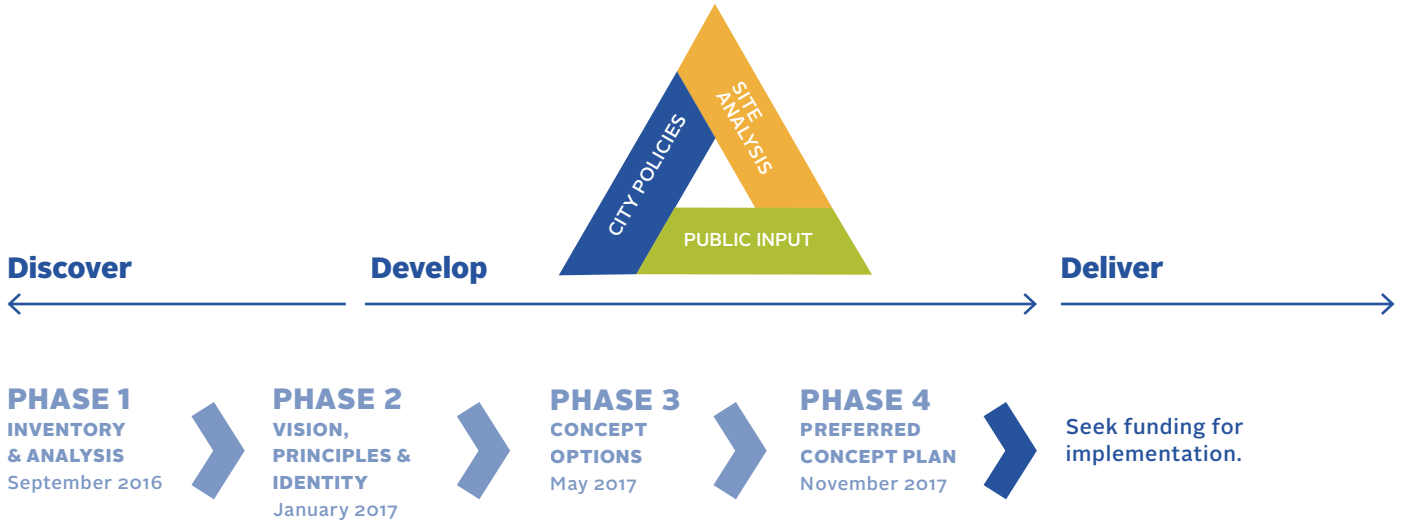
Input from the open house, the online survey, and stakeholder workshops will give the City direction in the preparation of the Master Plan for Dawson Park and Kinnaird Ravine.

The Master Plan is currently in the CONCEPT Phase of the Park and Facility Development Process. In this phase, public consultation will be critical to informing the Master Plan from now until its completion in the Spring of 2018. Existing policy, City Administration and public input will inform the process and outcome of the CONCEPT Phase, at the end of which the Master Plan report and concept plan will be submitted to City Council as part of the 2019–2022 budget cycle to seek funding for implementation.

Council will review the Environmental Impact Assessment and Site Location Study associated with the Dawson Park and Kinnaird Ravine Master Plan. When these are approved, the City will prepare a request for funding and implementation of the Master Plan using a phased approach.

If you would like to stay updated on the progress of the project, updates will be available on the project website at [edmonton.ca/dawsonparkmasterplan](http://edmonton.ca/dawsonparkmasterplan)





**Engagement Inputs and Results**

Feedback from each phase of engagement has been incorporated into the Master Plan along with input from City policies and site analysis. The resulting concept plan will be presented to Council for funding as part of the 2019-22 budget cycle.

