

Primary Entries

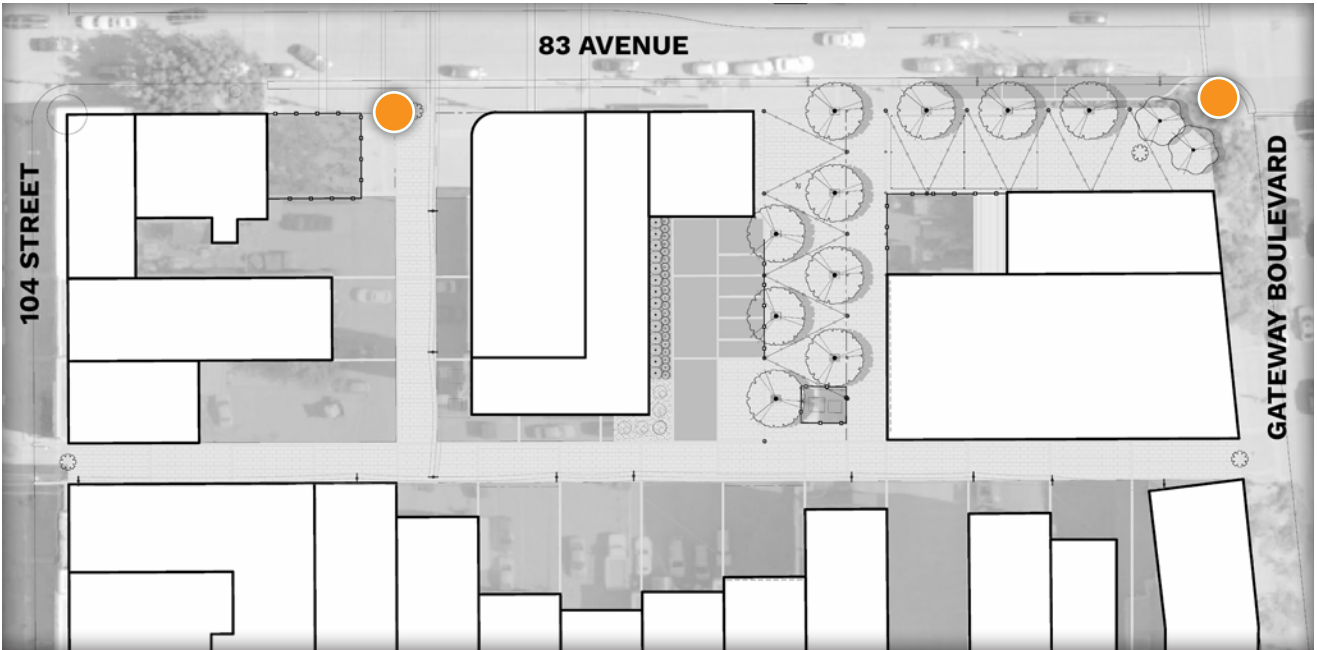


KEYPLAN

Highlighted Locations

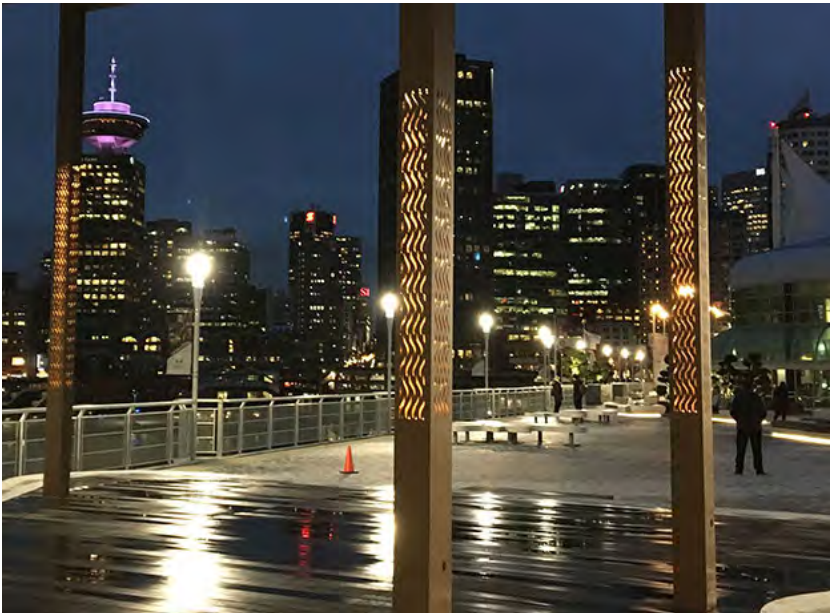


Secondary Entries

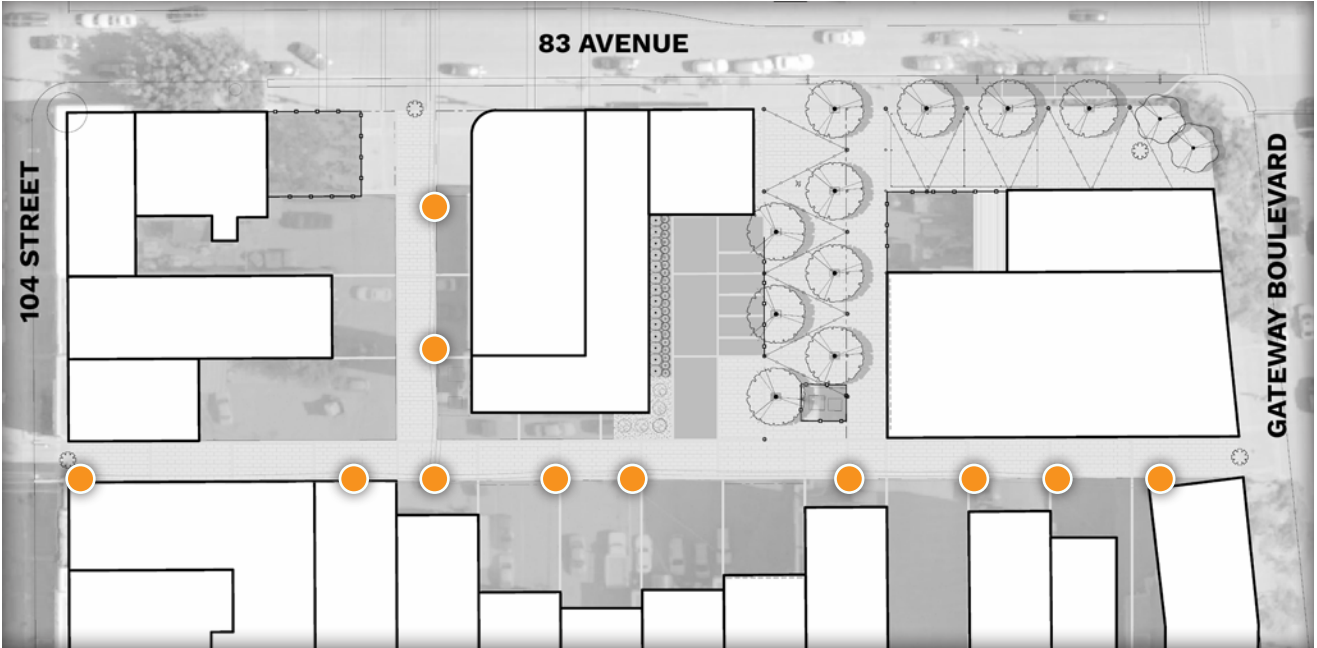


KEYPLAN

Highlighted Locations



Cantilevered Luminaires



KEYPLAN

Highlighted Locations 

Plaza Catenary Lighting

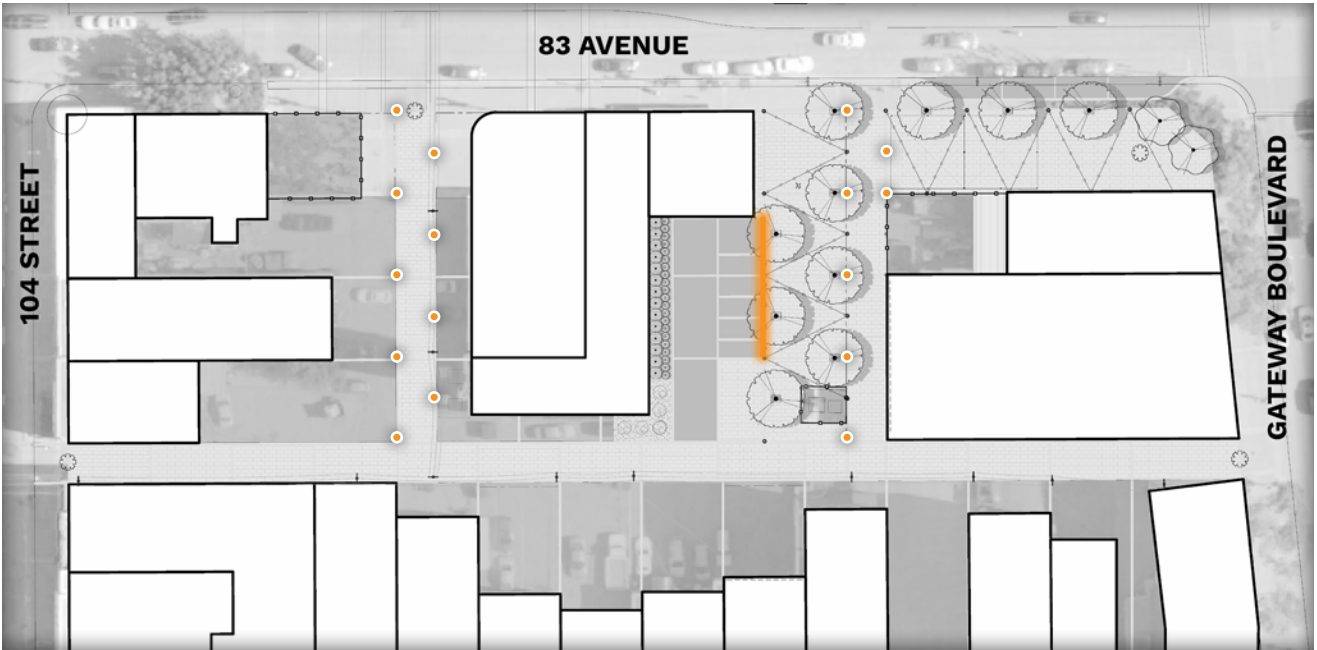


KEYPLAN

Highlighted Locations 



Ground Level Lighting



Benches & Planters

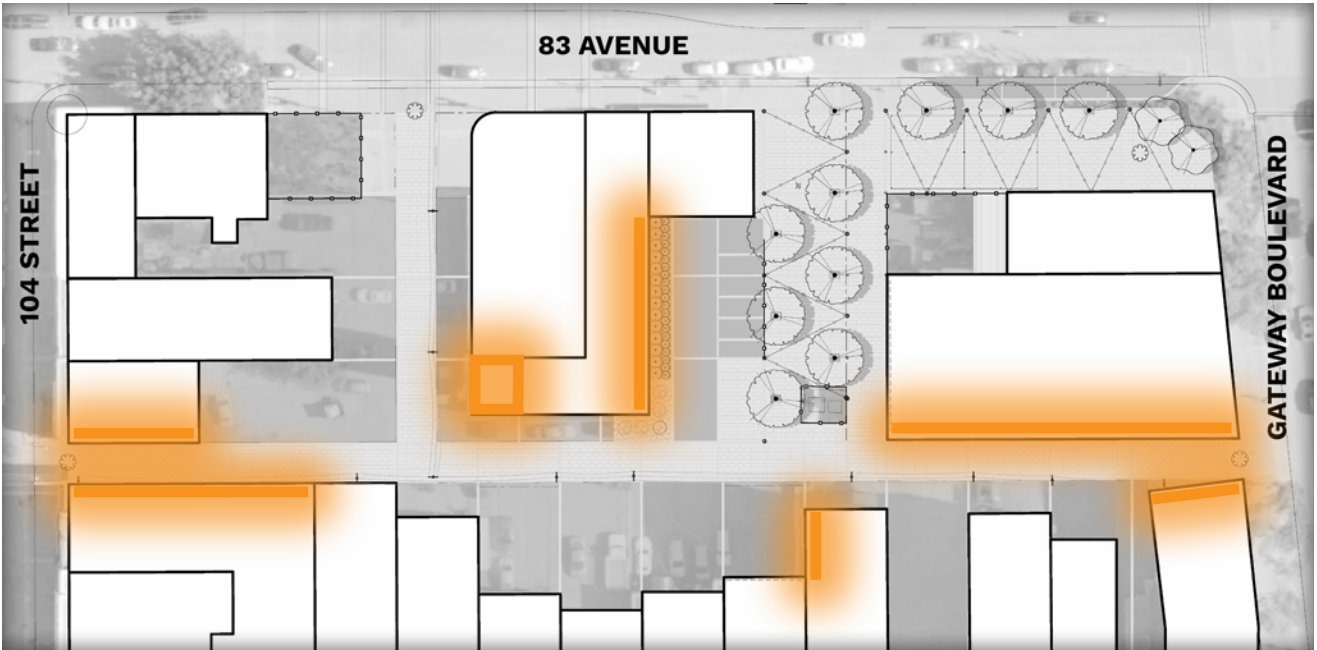


KEYPLAN

Highlighted Locations



Private Art & Lighting Partnerships

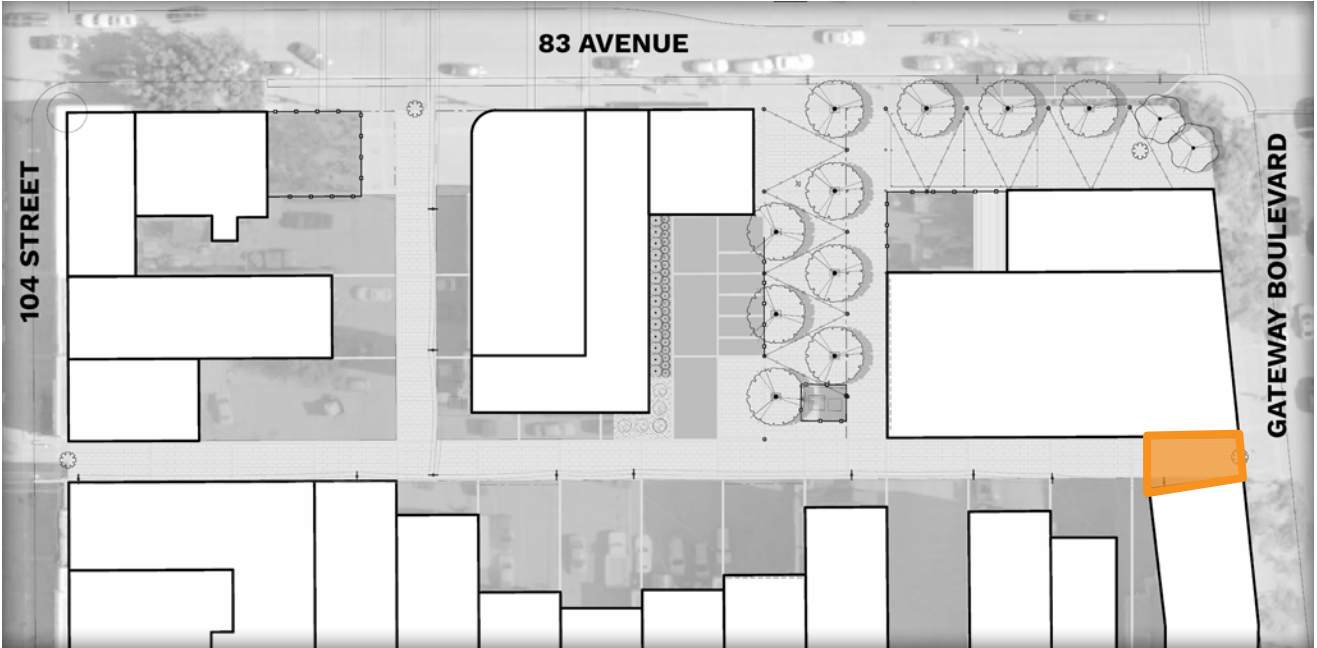
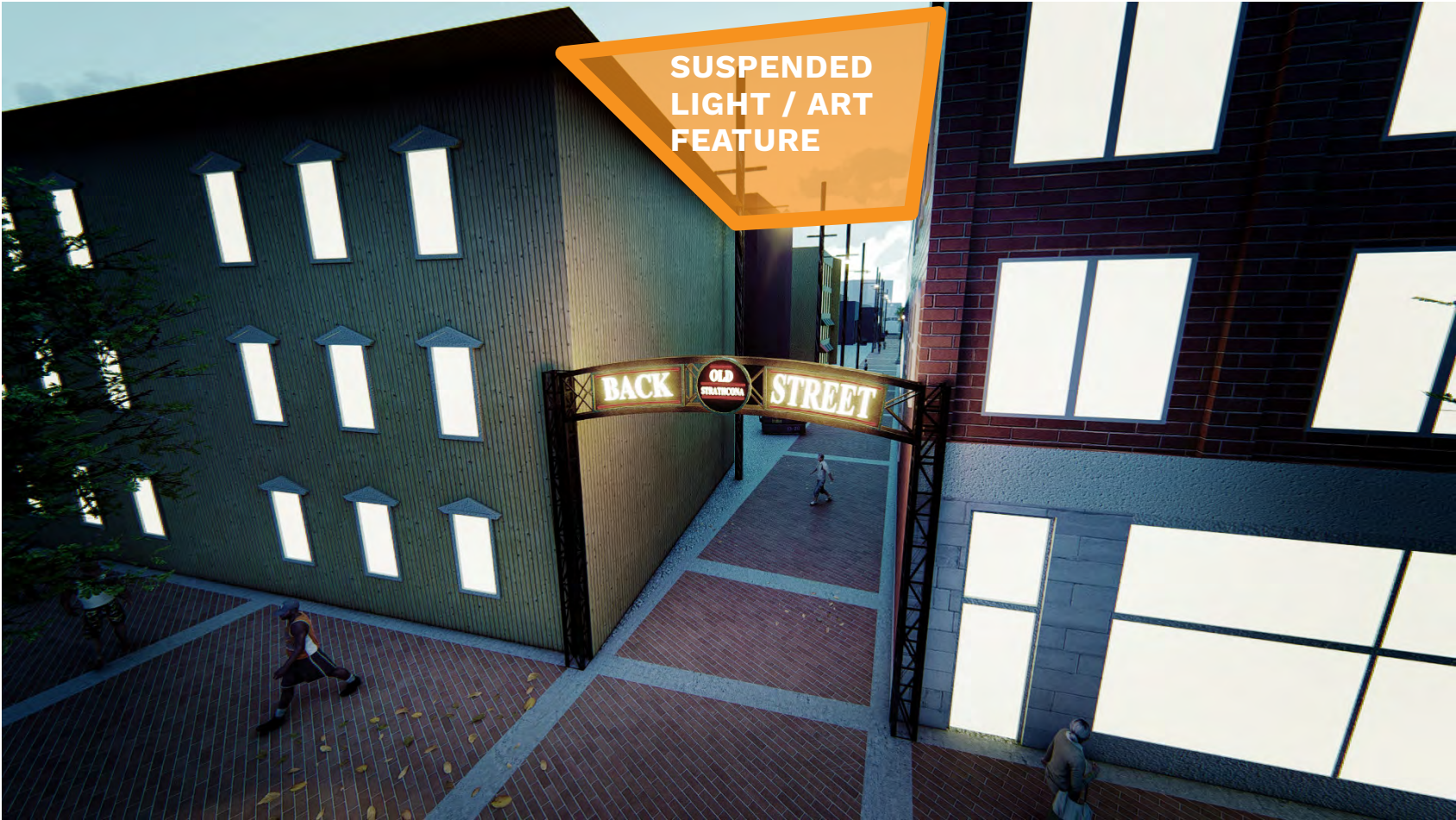


KEYPLAN

Highlighted Locations 



Private Art & Lighting Partnerships



KEYPLAN

Highlighted Locations



Concept Renderings: East Alley (104 Street) Entrance



Lighting / Entry Options

- Primary Entry: Freestanding industrial style entry features with lit neon signage
- Cantilevered luminaire lighting on every utility pole
- No possibility to have building to building suspension of catenary lights or lit public artwork, as the overhead power pole constraints exist at this entry
- Wall / mural artwork on the building facades that is lit with wash lighting are possible with private partnerships

Concept Renderings: West Alley (Gateway BLVD) Entrance



Lighting / Entry Options

- Primary Entry: Freestanding industrial style entry features with lit neon signage
- Cantilevered luminaire lighting on every alley pole
- Possibility to have lighting feature installed on the facades or mural artwork lit with wash lighting with private partnerships, would require coordination and confirmation with heritage planning
- The line of utility poles end west of the Strathcona hotel in the alley, and therefore there are less overhead utility constraints between the hotel and Crawford building. Opportunity to explore suspended artwork and lighting

Concept Renderings: North(west) Varscona Alley Entrance



Lighting / Entry Options

- Secondary Entry: Because it doesn't have the same spatially defining characteristics of a narrow passage-way between buildings, no traditional entry feature considered as per the east / west alley entrances
- Cantilevered luminaire lighting on every utility pole

Concept Renderings: North(east) Main Plaza Entrance



Lighting / Entry Options

- Secondary entry: Because it doesn't have the same spatially defining characteristics of a narrow passage-way between buildings, no traditional entry feature considered as per the east / west alley entrances
- Black powder coated catenary poles that suspend a zigzag pattern of lighting alternating with the tree spacing west of the alley ROW
- Same catenary poles east of the alley ROW north of the El Cortez facade

Project Decisions: Ideas We Explored

1. ORIGINAL CONCEPT: CATENARY LIGHTING IN EAST / WEST ALLEY

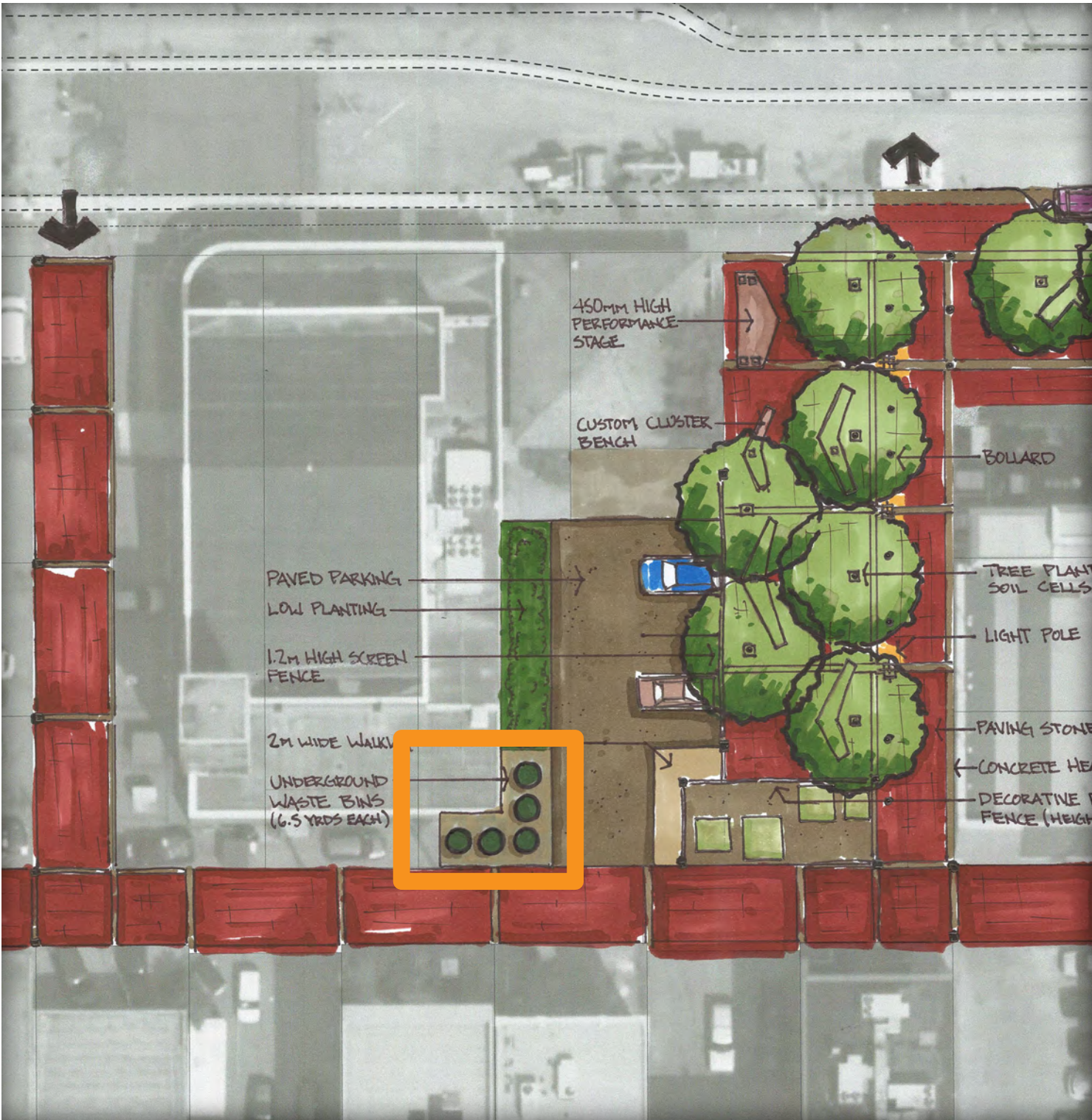


2. LED LIGHTING ON UTILITY POLES



Project Decisions: Ideas We Explored

1. ORIGINAL CONCEPT: MOLOK (IN-GROUND WASTE LOCATIONS)



2. CURRENT CONCEPT: MOLOK (IN-GROUND WASTE LOCATIONS)

