



THE WAY AHEAD

# Building Great Neighbourhoods

TRANSFORMING | **EDMONTON**

BRINGING OUR CITY VISION TO LIFE



## We are here today to:

- Explain what Building Great Neighbourhoods is and the processes and timing for your neighbourhood.
- Ask about any neighbourhood projects/initiatives already underway that may align with, or impact, opportunities for City capital investment.
- Listen to your suggestions for capital investments to improve pedestrian/cycling access, traffic access and overall livability.
- Ask your help in advertising future Building Great Neighbourhoods public meetings.

# Presentation Overview

- Building Great Neighbourhoods
- Selecting Neighbourhoods
- Drainage Neighbourhood Renewal Program
- Neighbourhood Renewal Program
  - Design Standards
- Local Improvements
  - Sidewalks
  - Street lights
- Great Neighbourhoods Capital Program
- Discussion

Building Great Neighbourhoods is an initiative that coordinates three City infrastructure investment programs to renew and improve Edmonton neighbourhoods.

## Building Great Neighbourhoods

Drainage  
Neighbourhood Renewal  
Program  
(Financial Services &  
Utilities)

Neighbourhood Renewal  
Program  
(Transportation  
Services)

Office of Great  
Neighbourhoods Capital  
Program  
(Community Services)

Great neighbourhoods are the building blocks of a great city. The City invests approximately \$25 million on average to reconstruct a neighbourhood.

- Renew and replace sanitary and storm sewers.
- Renew and replace roads, curbs, sidewalks and streetlights on City road right-of-way.
- Improve pedestrian/cycling accessibility.
- Identify enhancements to the neighbourhood's livability.
- Ask residents for feedback on preliminary designs that include proposed improvements to pedestrian/cycling accessibility and overall neighbourhood livability.

## In Addition:

Property owners have the opportunity to choose:

- To pay for the additional cost of installing decorative street lighting in the neighbourhood.
- To petition against sidewalk reconstruction. Sidewalk maintenance work is then done: mud-jacking, grinding and asphalt patching.

# Before & After



# Before & After





# Selecting Neighbourhoods

Annually over a four year cycle, City crews examine the condition of pavement and concrete in Edmonton's 300+ neighbourhoods.

Selection and timing depends on various factors:

- Street-level and underground infrastructure conditions
- Available budget
- Coordination with underground utilities



# Drainage Neighbourhood Renewal

Involves a combination of relining and open cut work:

- The majority of the work is done by relining. This involves minor disruption to your neighbourhood.
- Sometimes an open cut is required which involves cutting the road open.

# Relining



You may already be seeing drainage renewal work in your area.

# Neighbourhood Renewal

Three components:

- Microsurfacing
- Overlay
- Reconstruction

Glenora will be reconstructed.

This involves repaving roads, replacing curbs, gutters and streetlights and replacing sidewalks (through Local Improvement).



\* All City property tax bills include a 1.5% property tax levy for Neighbourhood Renewal.

## Design Standards

The City reviews current design standards before reconstruction begins. These include:

- Road design
- Curb design
- Traffic signage
- Active transportation
- Streetlights

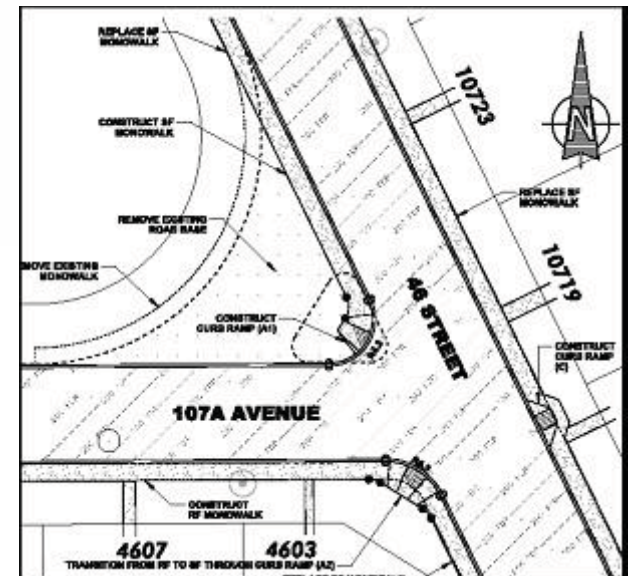
# Road Design Standards

## Intersections

- Adding curb ramps, eliminating 'overdesign' and improving curb radius.

## Road Width

- Where possible, roads are sized to current standards.
  - Collector = 11.5 m
  - Local = 9 m
- Shift curblane walks to boulevards.



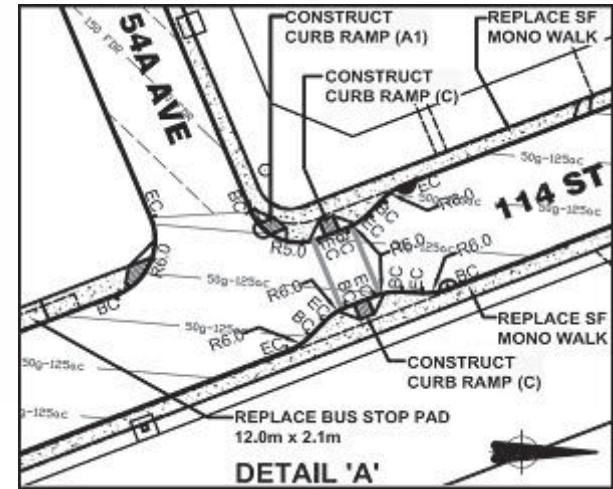
# Curb Design Standards

## Curb extensions

- Considered at key pedestrian crossings near schools, community halls, playgrounds.

## Curb types

- Generally install mountable curbs except on collector roads, bus routes, and around schools, parks and commercial areas.



# Traffic Signage Design Standards

Review circulation/traffic control signage and determine if changes required.





# Active Transportation Design Standards

## Improve infrastructure

- **Sidewalks:** In residential neighbourhoods ensure accessibility to all bus stops, provide a sidewalk on at least one side of the street.
- **Bicycle routes:** Use the Bicycle Transportation Plan to implement bike lanes, shared-use lanes and shared-use pathways.



# Streetlight Design Standards

## Neighbourhood streetlight system

- Upgraded to energy efficient LED lighting, the new City standard for street lights.



# Local Improvements

What are they?

- Construction projects undertaken near or adjacent to your property.
- Projects City Council considers of greater benefit to an area of the municipality rather than to the whole municipality.
- Paid for in whole or part by property owners through a local improvement tax on annual municipal property tax bill.

# Local Improvements

Two types involved with neighbourhood reconstruction:

## City initiated

- City proposes improvement and advises property owners of improvement and projected costs.

Example: Sidewalk reconstruction

## Property owner initiated

- Property owners propose improvement through an Expression of Interest (EOI) and gather support for it.

Example: Decorative streetlighting

# Sidewalk Reconstruction



# Sidewalk Reconstruction

- City and property owner share costs (50/50) of sidewalk reconstruction adjacent to the owner's property.
- 51% of property owners in a project area needed to *petition against the improvement* to defeat sidewalk reconstruction.
- Deadline for petition is 30 days after Local Improvement notice received by property owners.

# Sidewalk Reconstruction

- If one reconstruction sidewalk project is defeated, other projects proceed if supported by majority of property owners.
- Map of your project area is provided with your Local Improvement notice.



# Sidewalk Reconstruction Outcomes

Sidewalk Reconstruction



Sidewalk Maintenance





# Great Neighbourhoods Capital Program

The Great Neighbourhoods Capital Program makes improvements in neighbourhoods on City property:

- Investments are coordinated with work planned in the neighbourhood to maximize the investments made and increases the livability of a neighbourhood.
- Investments are unique to each neighbourhood.

# Great Neighbourhoods Capital Program



Neighbourhood Park in  
Fulton Place BEFORE



Neighbourhood Park in  
Fulton Place AFTER

# Great Neighbourhoods Capital Program



Sherbrooke Neighbourhood  
BEFORE



Sherbrooke Neighbourhood  
AFTER

# Project Stages - Concept



Your feedback today will help inform preliminary design.

Preliminary designs will be presented at a neighbourhood public meeting in early 2013.

Residents will see detailed maps that show the proposed changes to the neighbourhood and around their property. Resident input and feedback will inform the final design prior to construction in 2014.

# Timing



Community League meeting

**Fall 2012**



Preliminary Design Public Meeting

**Spring 2013**

(Opportunity for Decorative Street Lighting Committee to get signatures)



Preconstruction community meeting

**Nov 2013 - Feb 2014**

Follows Local Improvement notices mailed to property owners

Construction starts

**Spring 2014**

# Discussion

Are there any projects/initiatives you have underway that may align with or impact opportunities for Building Great Neighbourhoods?

Any suggestions around pedestrian and cycling access, traffic access or opportunities to improve the livability of your neighbourhood?

# Thanks!

We ask your help with the next two Building Great Neighbourhoods public meetings:

- Does your community have a contact for newsletter content and advertising suggestions?

For more information about work in your neighbourhood:

[www.edmonton.ca/BuildingGreatNeighbourhoods](http://www.edmonton.ca/BuildingGreatNeighbourhoods)

[BuildingGreatNeighbourhoods@edmonton.ca](mailto:BuildingGreatNeighbourhoods@edmonton.ca)