

Tonight's Agenda

- | | |
|-----------|-----------------------------------|
| 6:00-6:30 | Welcome and Tour Panels with Team |
| 6:30-7:30 | Presentation |
| 7:30-8:45 | Break-Out Session |
| 8:45-9:30 | Feedback & Next Steps |



Welcome

Public Open House #2

TRANSIT ORIENTED DEVELOPMENT

MCKERNAN/BELGRAVIA

STATION AREA PLAN



Tonight's Presentation

Project Overview

The Station Area

What we learned at Workshop #1

Draft Vision and Principles

Toward a Station Area Framework

Exploring Options

Breakout Group Discussions



The Project Team



ParioPlan Incorporated

Armin Preiksaitis, Sara McCartney



Urban Strategies Incorporated

Mark Reid, Pascale Dionne



Bunt & Associates

Ray Davis



Colliers International

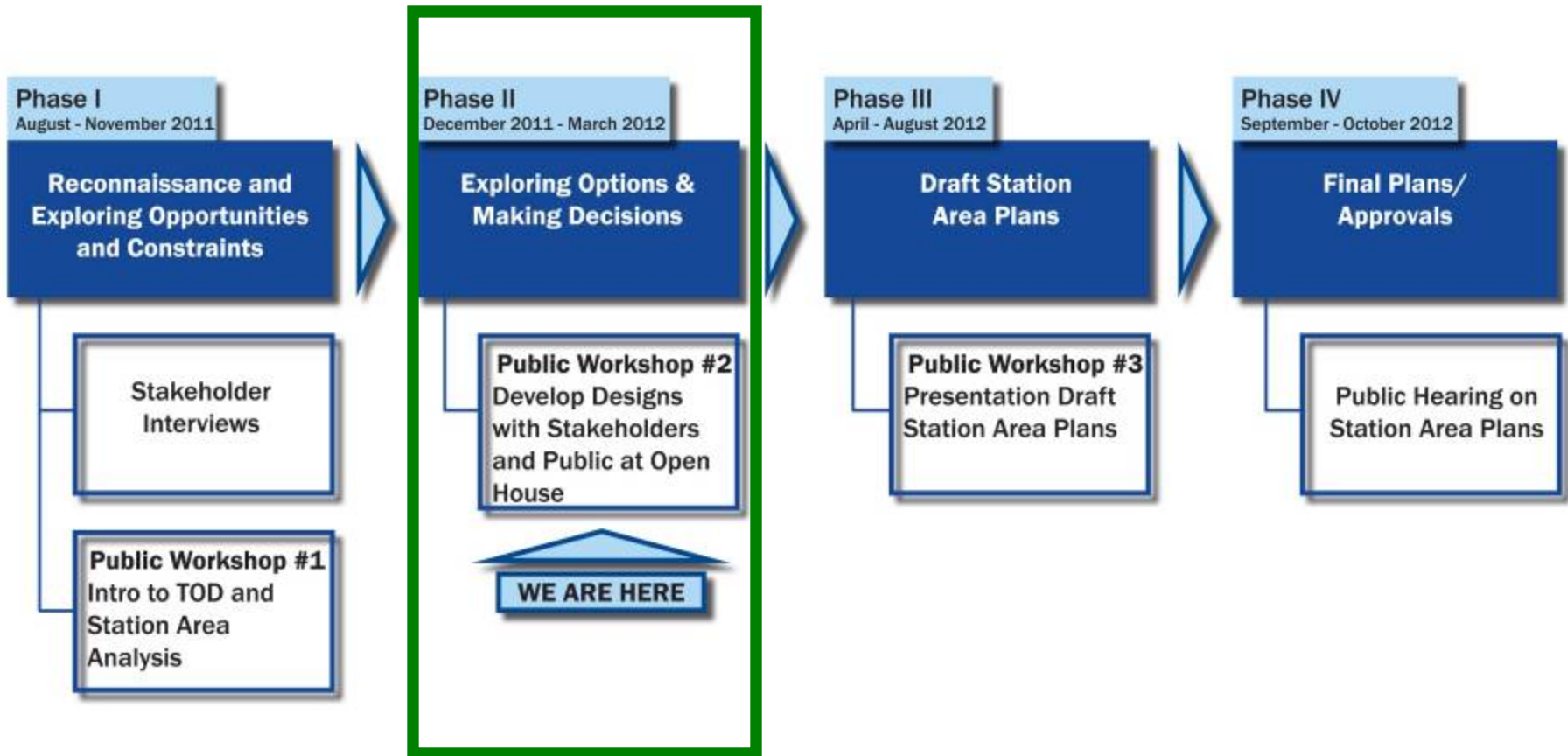
James Smerdon



Associated Engineering Alberta Limited

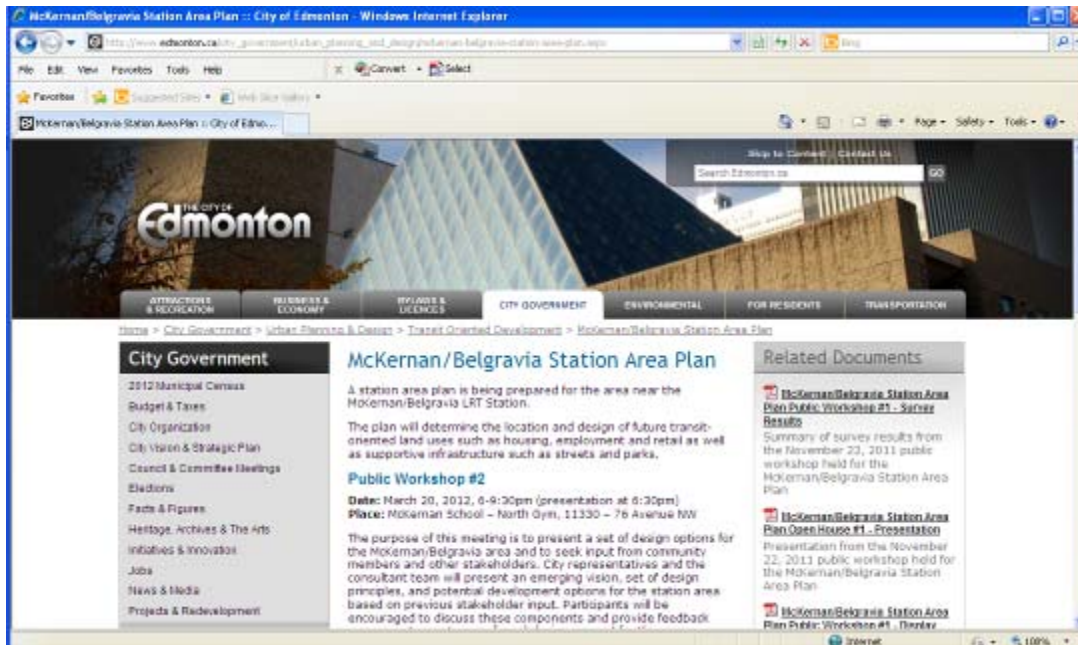
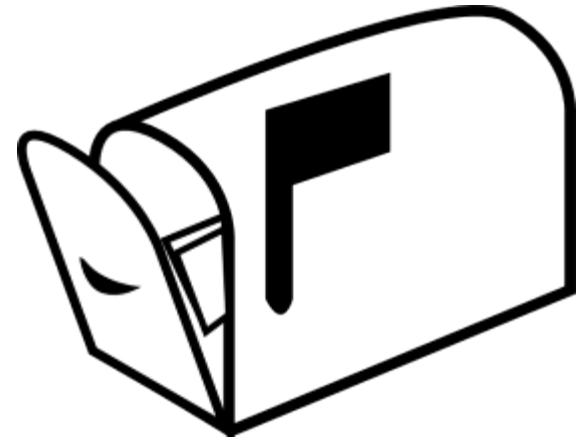
Graham Sterparn

The Process



Notification

- Mailout notices
- Flyer drop
- The Examiner newspaper
- Website
- Email notices
- Twitter



Edmonton
Examiner



Project Overview



McKernan/Belgravia Station Area Plan

Study Purpose:

Support Transit Oriented Development (TOD) in the McKernan and Belgravia neighbourhoods

Goal:

Preserve and strengthen local neighbourhood character while capitalizing on the existence of the McKernan/Belgravia LRT Station



Key Study Objectives

- To determine a plan of action for managing growth and change in the area.
- To develop appropriate recommendations for:
 - Where and how redevelopment and infill development should occur
 - The location and design of new transit oriented land uses.
 - Amendments to or repeal of the existing community development plan; and,
 - Adoption of a new station area plan (Area Redevelopment Plan).



Transit Oriented Development (TOD)

Transit Oriented Development (TOD) is defined as

Urban development that is *planned* and *integrated* with an LRT station at its core. In a TOD, housing, shopping and employment are concentrated along a network of walkable and bikeable streets generally within 400 metres of the transit station

Transit and TOD

- LRT is a smart alternative for getting around as it reduces congestion, CO2 emissions.
- Transit use can be part of an active healthy lifestyle.



Development and TOD

- Creating a plan to manage change around station areas can create more complete communities with greater local amenities, that encourage more people to use transit



Benefits of TOD

- Efficient use of land and infrastructure to counter sprawl
- Supports sustainable urban development
- Safe and complete communities
- Mixed use and increased housing choice
- Creates opportunities to live and work
- Local economic and community development
- Vitality, energy and positive change
- Improved public places
- Healthy lifestyle through active transportation

TOD a Catalyst for Urban Regeneration

San Diego



Toronto

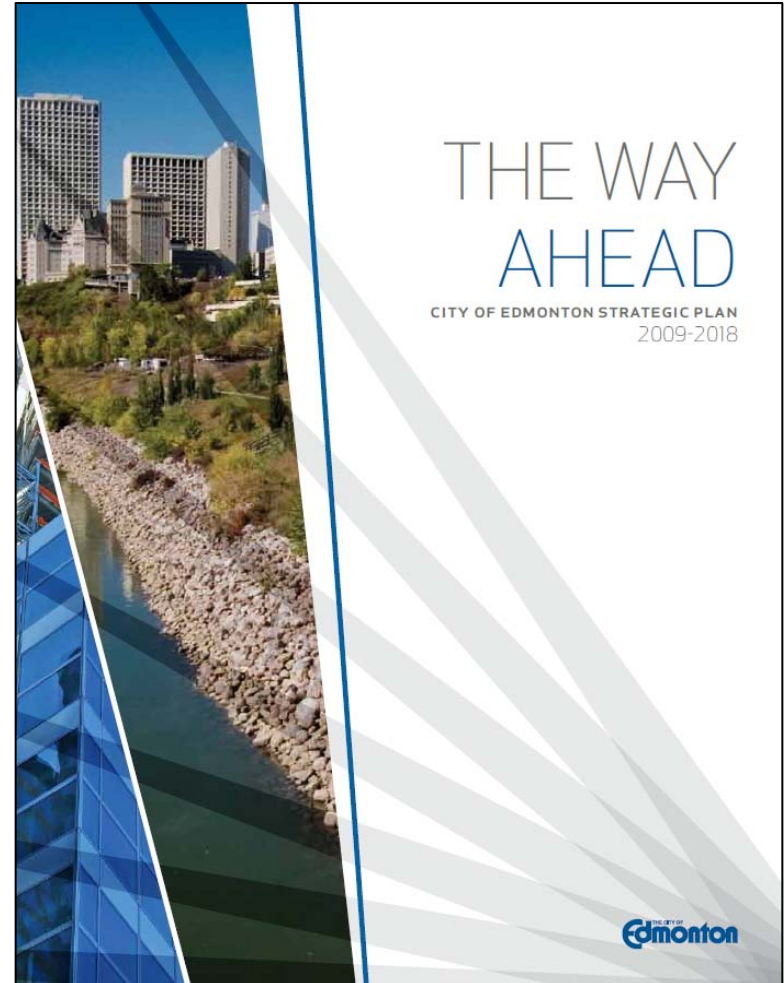


Salt Lake City



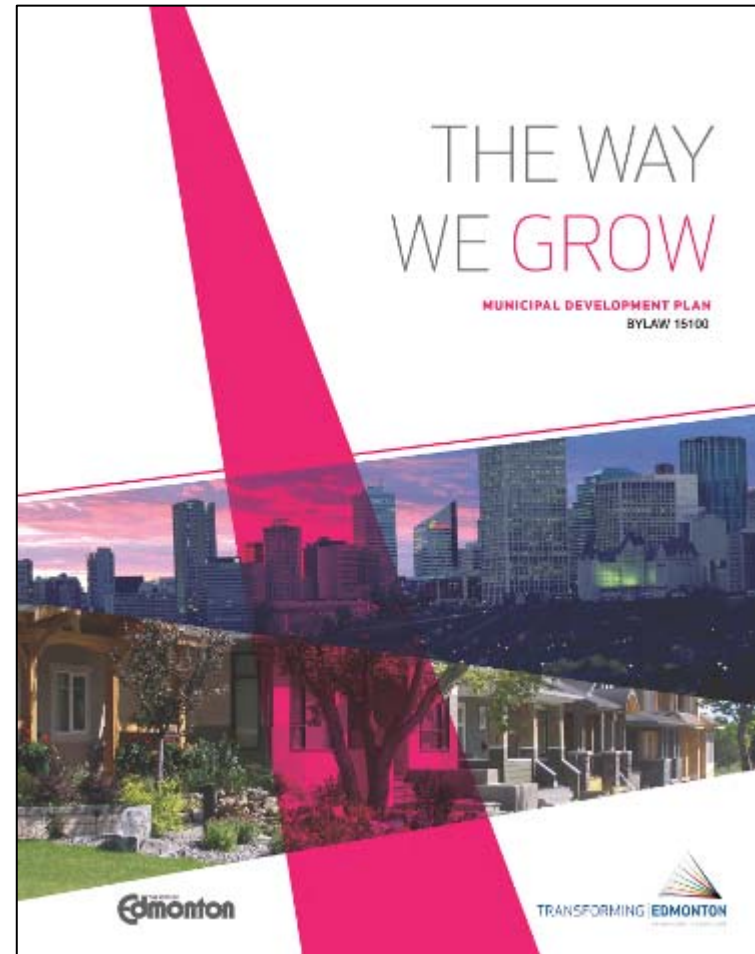
Prioritizing TOD - City of Edmonton Strategic Plan

- Transform urban form
- Shift transportation modes
- Improve liveability
- Preserve and sustain the environment
- Ensure financial stability



Prioritizing TOD - Municipal Development Plan

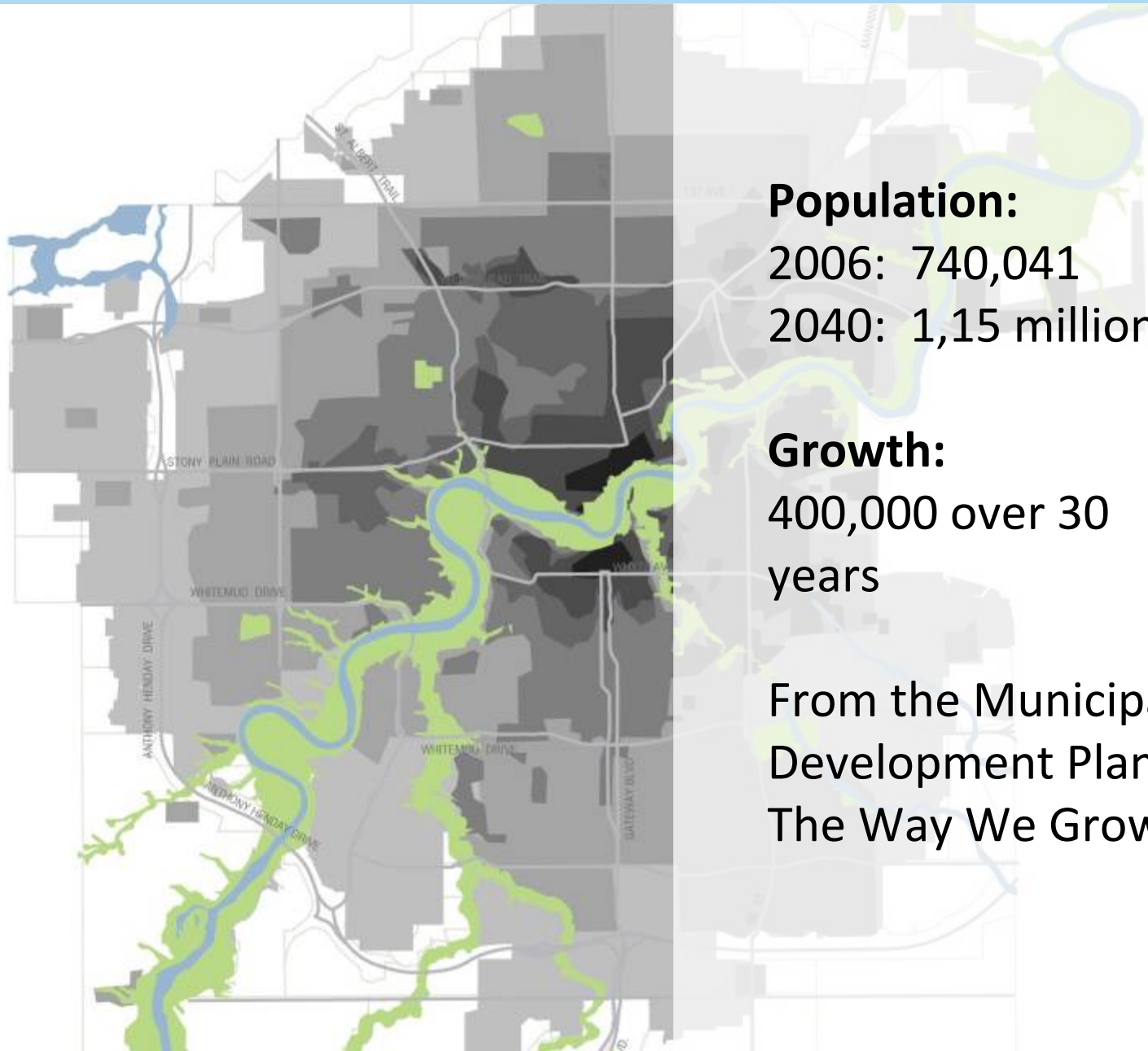
- Integrate higher density development with LRT stations and transit centres
- Goal: a minimum 25% housing unit growth as infill city-wide
- Prepare transit oriented development (TOD) plans around existing LRT nodes, and in association with expansion of the LRT system
- Facilitate partnerships and collaborative efforts to develop TOD



Prioritizing TOD - Transportation Master Plan

- Pursue expansion of the LRT to all sectors of the city to increase transit ridership and transit mode split, and spur the development of compact, urban communities
- Integrate land use planning and transportation to create an accessible, efficient and compact urban form





Population:

2006: 740,041

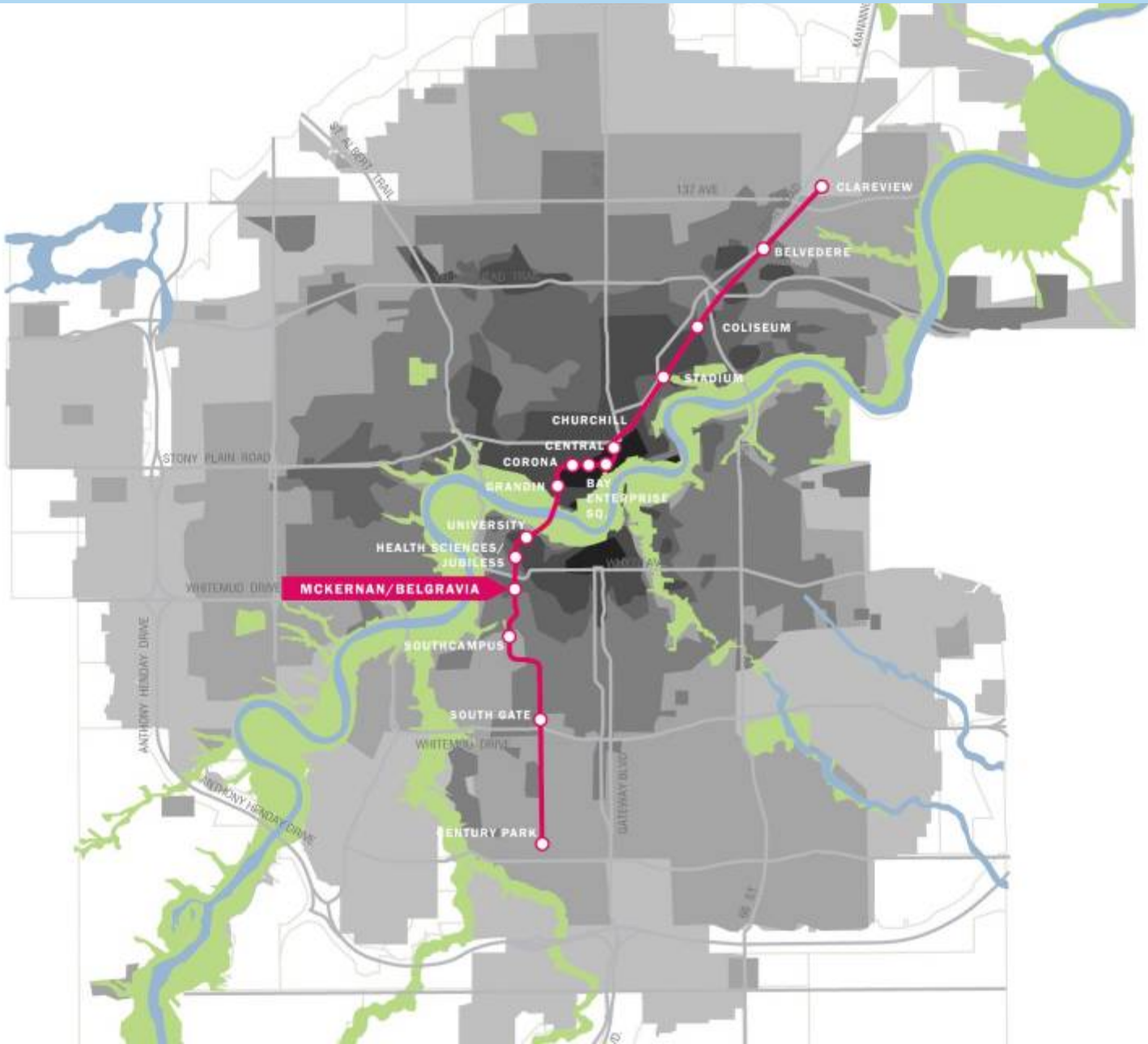
2040: 1,15 million

Growth:

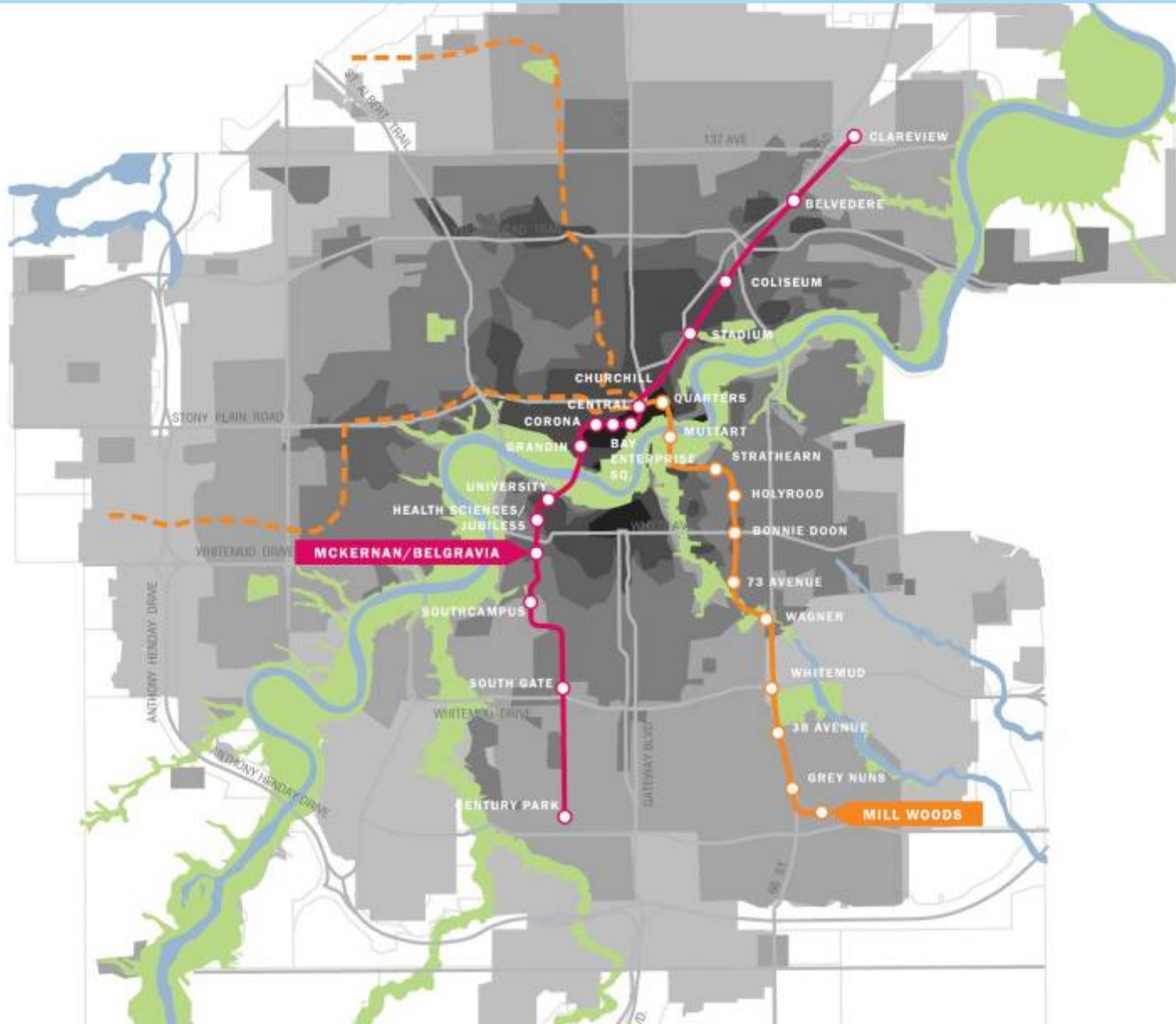
400,000 over 30
years

From the Municipal
Development Plan:
The Way We Grow

The LRT network today

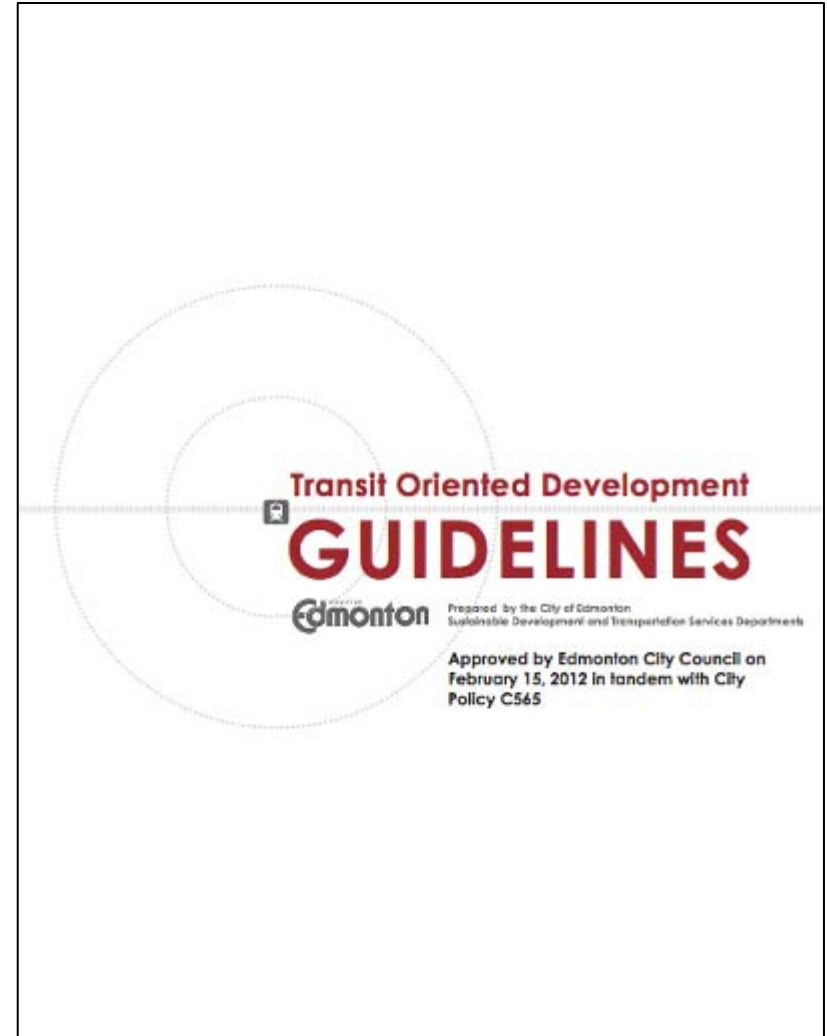


The long-term LRT network will link more people and shape the City's Growth



TOD Policy, Guidelines, Strategy, Plans

- Transit Oriented Development City Policy (C565)
- Transit Oriented Development City Guidelines
- Transit Oriented Development Implementation Strategy for the City of Edmonton
- Station Area Planning



Station Area Plans

- Determines the location and design of new transit-oriented land uses
- Establishes a clear vision for future development within station area
- Council approved Plan

