

WELCOME!



Edmonton

...to the Public Open House for the future Kinistinâw Park in The Quarters Downtown



PROJECT OVERVIEW

As part of The Quarters Downtown redevelopment, the City of Edmonton is developing a new park for the neighbourhood, called Kinistinâw Park. The vision for this park is to create a community space for people to gather and to attract further redevelopment to the area.

PROJECT GOALS & OBJECTIVES

- Improve connectivity to open spaces within The Quarters Downtown
- Make The Armature and Kinistinâw Park a focal point and a year-round gathering place in The Quarters Downtown
- Use environmentally friendly sustainable landscape design practices
- Ensure the publicly accessible open space is designed, maintained, and managed to help keep it vibrant, safe, and clean.

WE WANT TO HEAR FROM YOU!

We want to hear your ideas on how to make Kinistinâw Park a vibrant and safe year round community gathering place.

Today we would like you to:

- Review the information
- Ask questions
- Provide comments on the boards or comment form
- Complete the survey - paper or online (www.edmonton.ca/kinistinawpark)

THE SITE

Today...

The site today is an under-used open space in The Quarters Downtown.

PROJECT ORIGIN

Kinistinâw Park is a key component of the open space network of The Quarters and supports The Armature as the core framework around which The Quarters is built. The Armature is envisioned as a highly walkable, pedestrian-focused high street that connects The Quarters to the North Saskatchewan River Valley. Kinistinâw Park is the culmination of that journey from the River to the heart of the Neighbourhood.

A preliminary concept plan was completed for Kinistinâw Park (then called New City Park) in 2012 in conjunction with the development of the concept design of The Armature.

This ongoing design process intends to establish a comprehensive vision based on community input to develop a phased approach to creating a new place for The Quarters, the neighbourhood of Boyle Street, and the surrounding downtown.



Edge of park from 102 A Ave



Aerial of park



Edge of park along lane adjacent to existing residential



Edge of park along The Armature

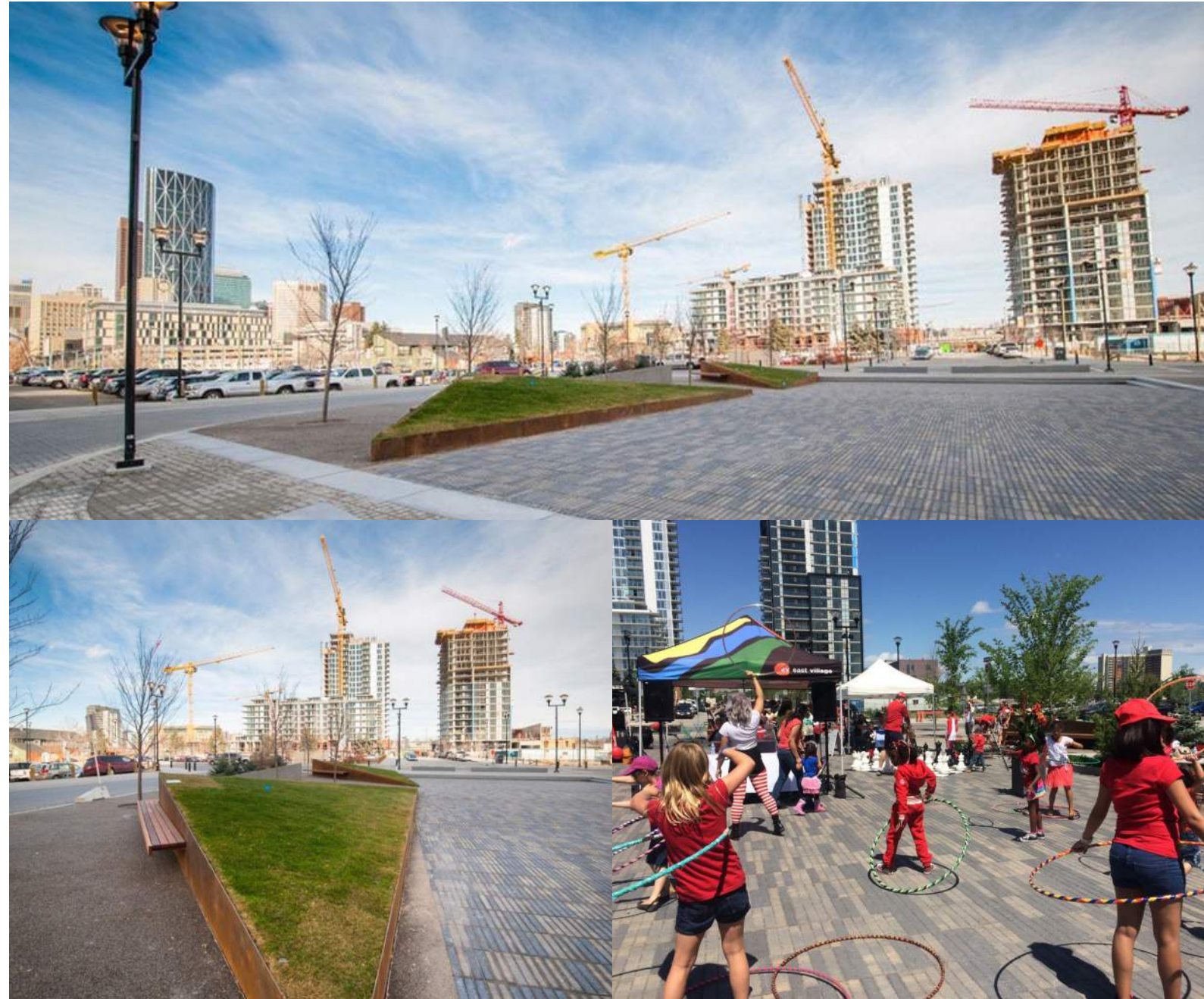


Existing open space

PRECEDENT PARKS

what lessons can we learn from...

5th Street Square



Location: Calgary, Canada

5th Street Square is a small programmable urban park in the centre of the East Village that features movable tables and chairs, grassed areas, and a multi-purpose programmable central open space. It plays host to food trucks, seniors' programs, and holiday festivities.

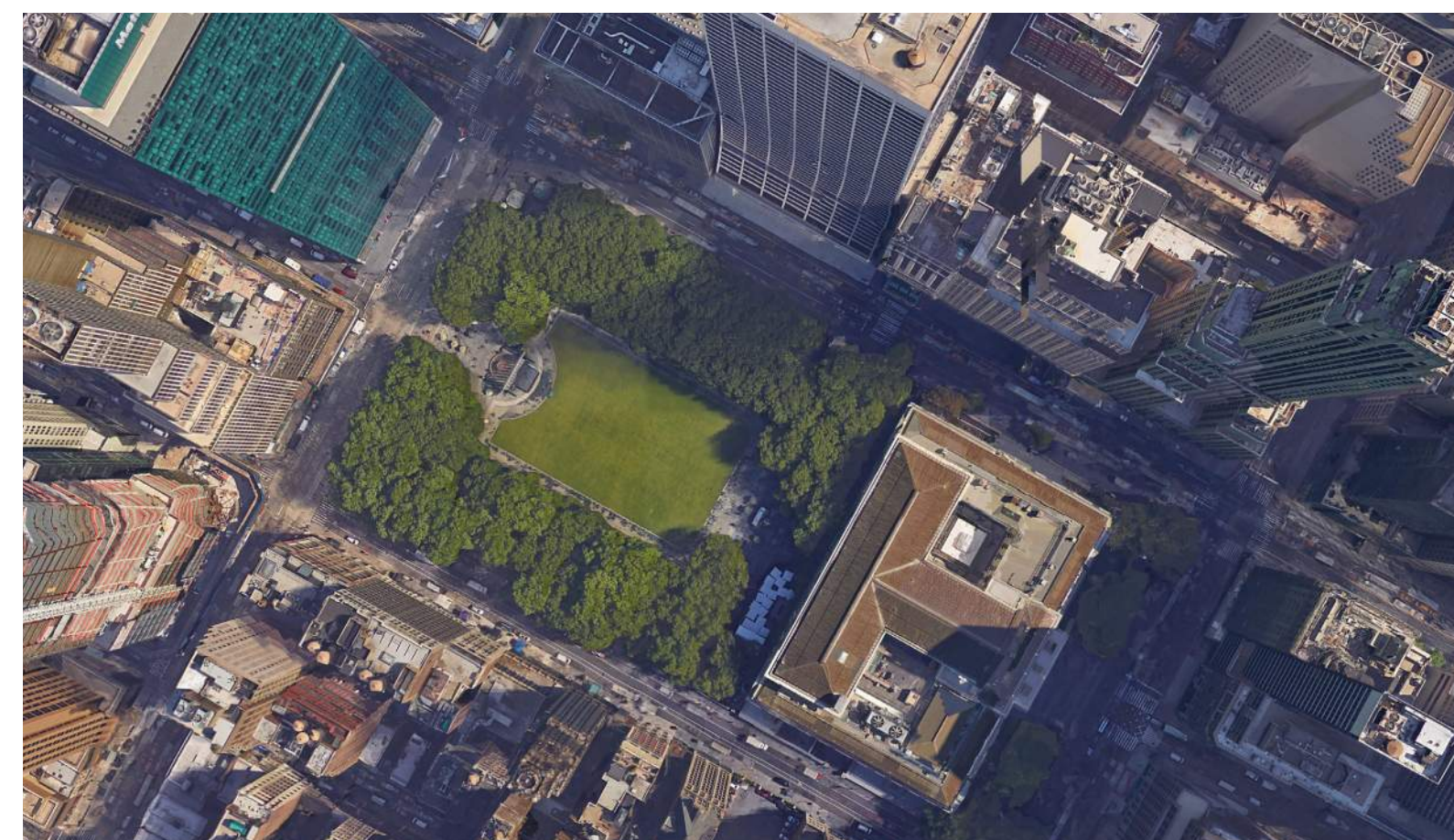


Bryant Park

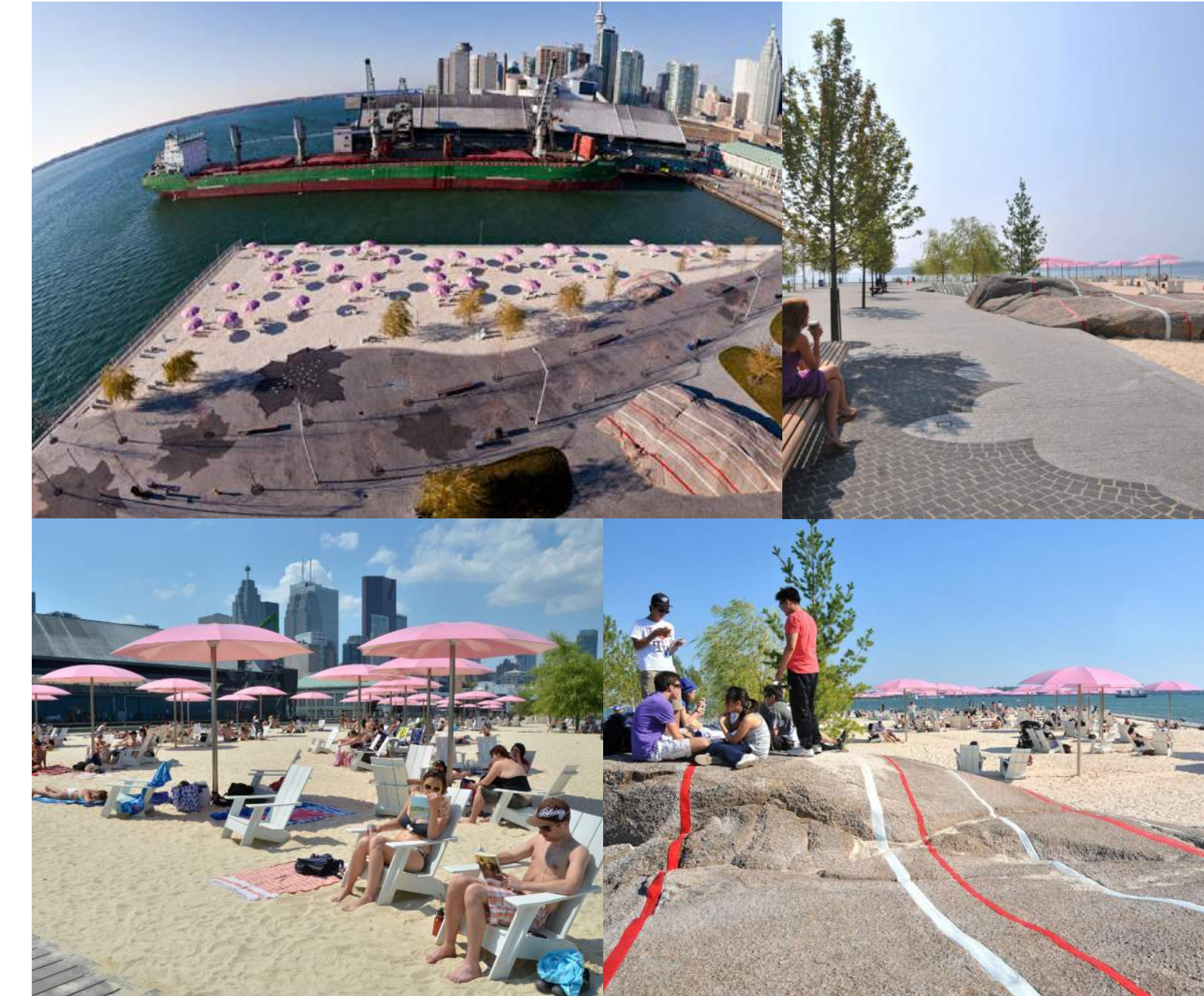


Location: New York, USA

Bryant Park is a privately managed public park and the site of winter ice skating at The Pond, free summer movies on the lawn, and endless meals and meetings at its movable tables and chairs.

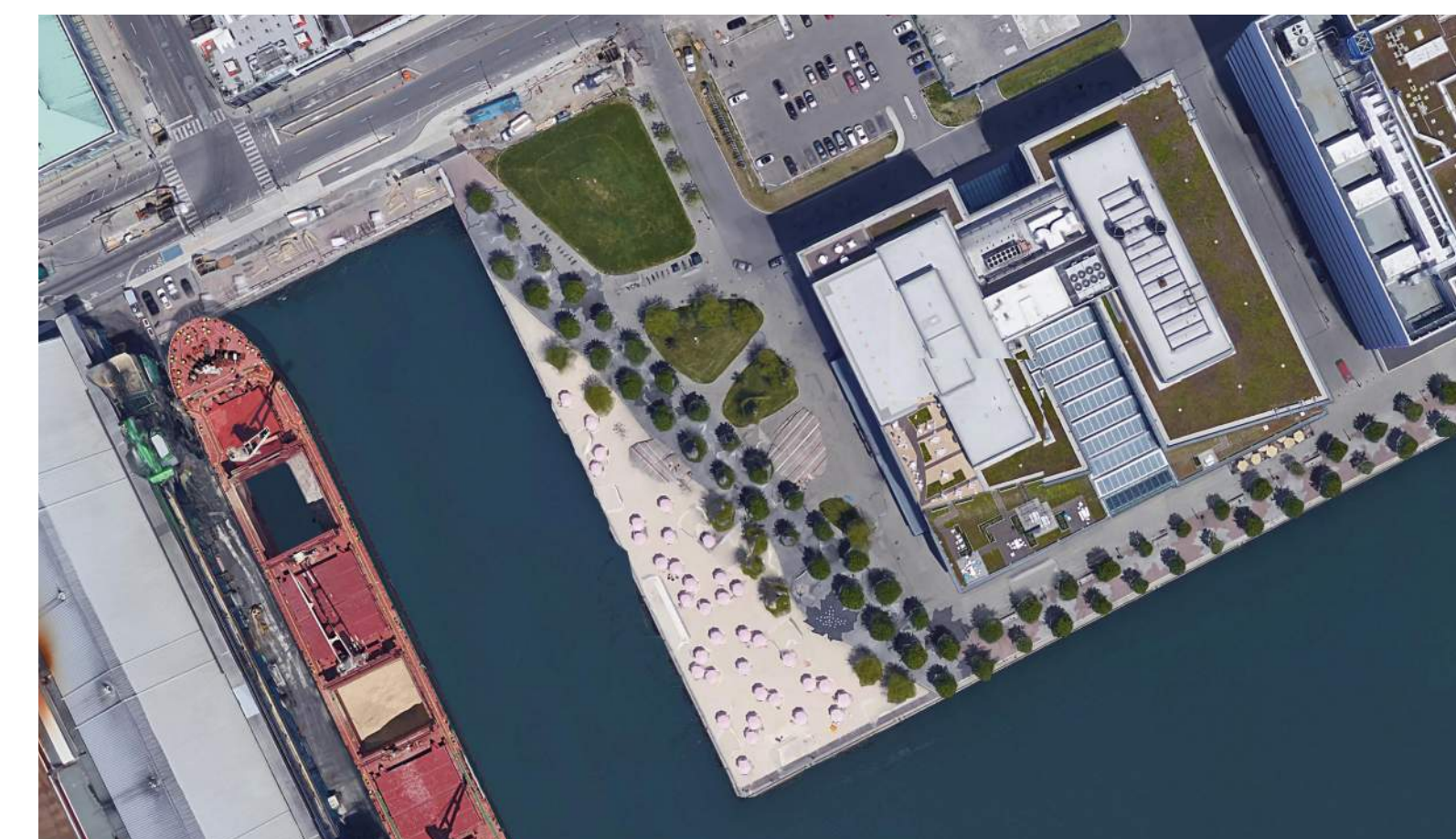


Sugar Beach



Location: Toronto, Canada

Sugar Beach draws upon the industrial heritage of the area along the Toronto waterfront. The park features an urban beach; a plaza space; and a tree-lined promenade running diagonally through the park.

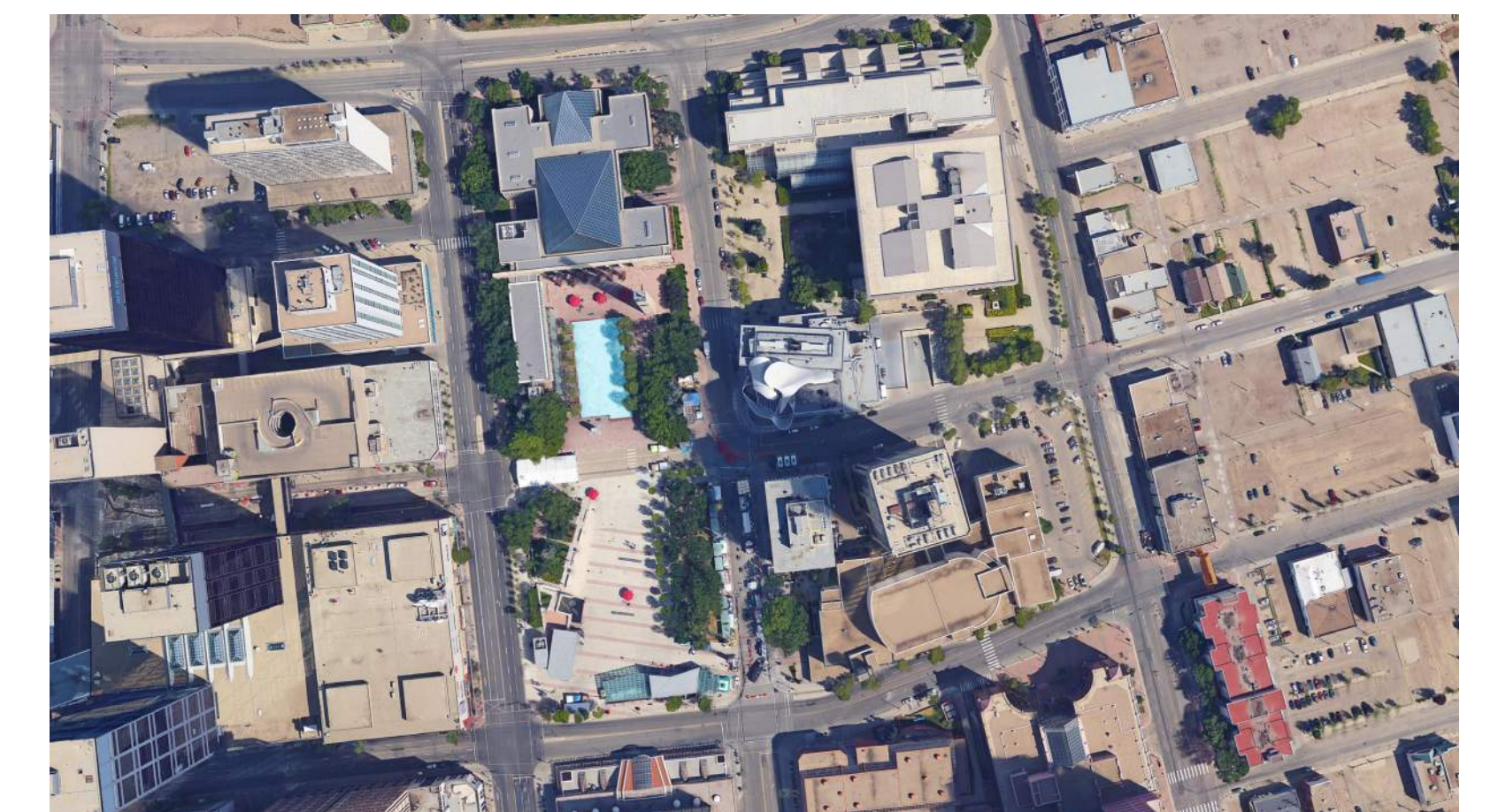


Churchill Square



Location: Edmonton, Canada

Churchill Square is a flexible, year-round festival and community event venue that accommodates large and small events. The Square features an amphitheatre, formal gardens, and movable tables and chairs.



WHAT INSPIRES YOU?

Great Public Places

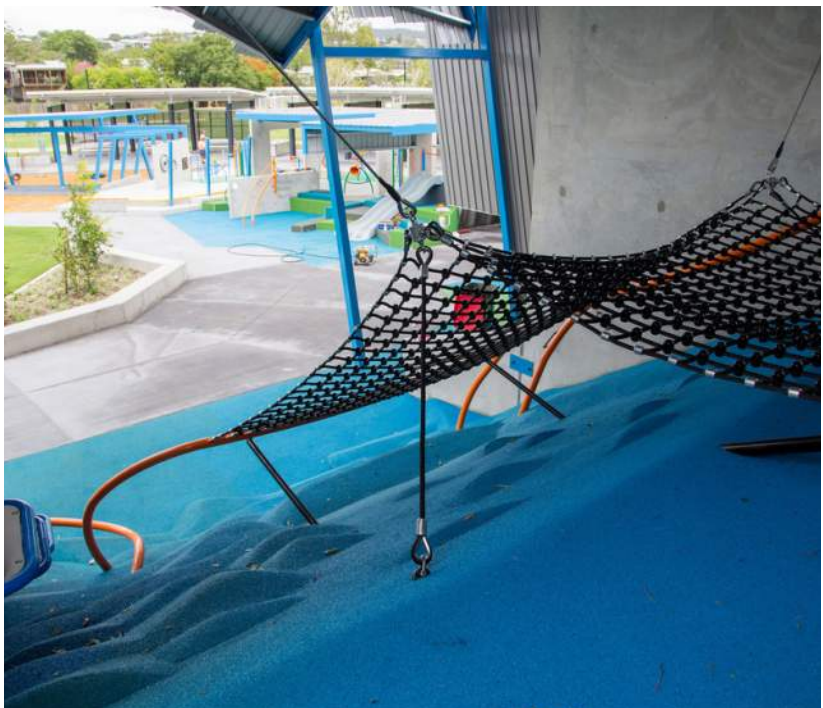
Public spaces are diverse, with different qualities that influence how they look, feel, and function as people places.

Place your dots below to identify which ingredients from parks around the world you think could work well for Kinistinâw Park!

Ingredient: **PLAY**

Immersive and challenging play spaces that provide a different level of experience than afforded by typical play structures are becoming increasingly popular. Likewise, adult play elements such as ping-pong, enable young and old to equally engage with public spaces and programmed activities.

Park + Location: Arena Playground, Frew Park, Brisbane



Owner: Brisbane City Council (City Projects Office) | Designer: Guymer Bailly Architects

Place a dot here if you like the idea of **PLAY** for the new park

Ingredient: **FOOD**

Food is a powerful magnet that invites passersby to explore and visit parks and open spaces. Communal tables and chairs, along with access to a variety of food and refreshments, can create a sense of invitation, comfort, and shared experiences in a public setting. Food vendors also provide 'eyes onto a space', which promotes a sense of safety.

Park+Location: Bryant Park, New York City | Snack Bar Patio on the Highline, New York City | Food Truck Pod, Seattle



Precedents: Bryant Park, New York + Snack Bar Patio on the Highline, New York + Food Truck Pod in Seattle

Place a dot here if you like the idea of **FOOD** for the new park

Ingredient: **EVENTS**

The temporary pavilions in this park provide an ever changing platform for art and culture. They also create a sense of wonder and engagement that is fostered by the unique designs of the structures themselves, as well as the performances and program they accommodate.

Park + Location: Serpentine Pavilion, London



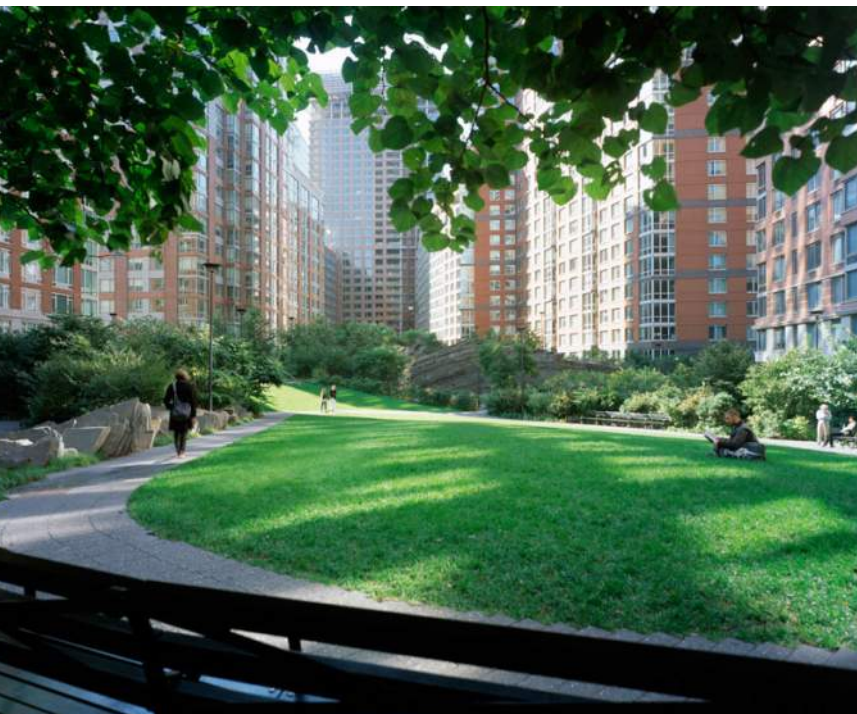
Owner: Serpentine Gallery | Designer: Several

Place a dot here if you like the idea of **EVENTS** for the new park

Ingredient: **NATURE**

Native plants and soils were used in creating this park, resulting in high degree of biodiversity. Planting including robust tree planting to enhance Vancouver Urban Forest, with the potential for horticultural specimens to soften the Urban context.

Park + Location: Tear Drop Park, NYC



Owner: Battery Park City Parks Conservancy | Designer: Michael Van Valkenburgh + Associates

Place a dot here if you like the idea of **NATURE** for the new park

WHAT INSPIRES YOU?

Great Public Places

Public spaces are diverse, with different qualities that influence how they look, feel, and function as people places.

Place your dots below to identify which ingredients from parks around the world you think could work well for Kinistinâw Park!

Ingredient: **SCALE + COMFORT**

This scale of this community library allows for a variety of uses, resulting in a site that is comfortable for a single person, a small group, or a large gathering.

Park + Location: Open Air Library, Madgeburg



Owner: City of Madgeburg, Germany | Designer: KARO Architekten, Architectur + Netzwerk

Place a dot here if you like the idea of **SCALE + COMFORT** for the new park

Ingredient: **ADAPTABILITY**

This structure was used as a theatre space to host diverse events and engage a wide range of audiences. Although it was designed to be temporary and transient in nature, it is a great example of how an idea can be distilled down to a simple idea to fulfill an important purpose.

Park + Location: BMW Guggenheim Lab - New York City, Berlin, Mumbai



Owner: BMW | Designer: Various

Place a dot here if you like the idea of **ADAPTABILITY** for the new park

Ingredient: **PROGRAM**

“Program” is a catch-all word used when describing a range of organized activities that help activate park spaces. Program has a lot to do with the success and popularity of urban parks, with a great number of activities and events happening throughout the year, which encourages people to mix and engage with one another.

Park + Location: Bryant Park, NYC



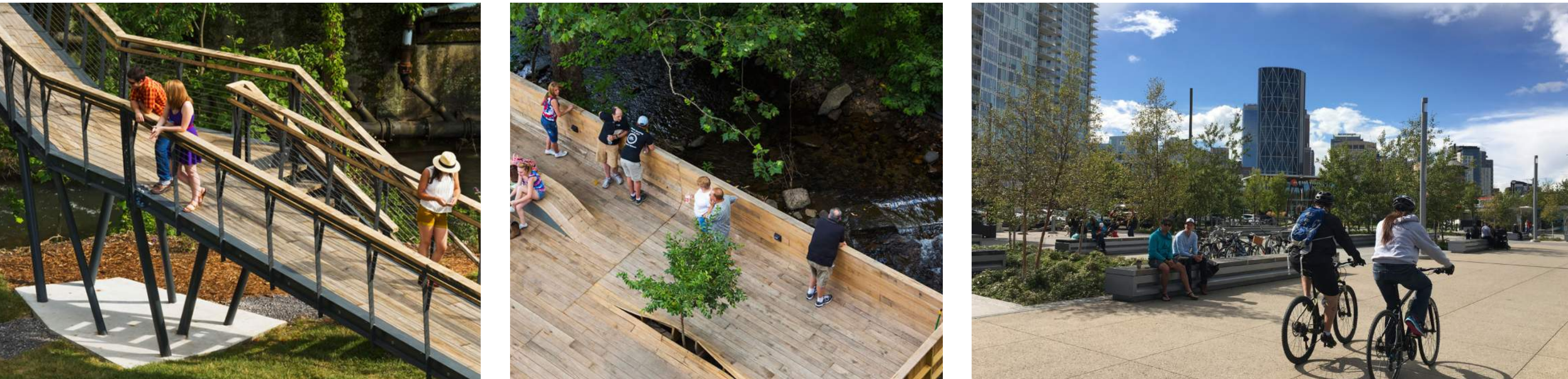
Owner: Bryant Park Corporations | Designer: Lynden Miller

Place a dot here if you like the idea of **PROGRAM** for the new park

Ingredient: **CONNECTIVITY**

Well-used destination spaces can be a place where you meet to start you journey, stop along the way, or your complete your travels. These place are a part of a larger network of pedestrian routes and parks.

Parks + Locations: Smith Creek Amphitheatre, Clifton Forge, Virginia, and Riverwalk, Calgary



Designer: design/buildLAB Virginia Tech (Smith Creek), Stantec Landscape Architecture, (Riverwalk)

Place a dot here if you like the idea of **CONNECTIVITY** for the new park

WHAT INSPIRES YOU?

Great Public Places

Public spaces are diverse, with different qualities that influence how they look, feel, and function as people places.

Place your dots below to identify which ingredients from parks around the world you think could work well for Kinistinâw Park!

Ingredient: **ACTIVE EDGES**

A space is defined by its surrounding edges. Creating engaging edges allow people to catch some sun, spontaneously strike up a conversation, buy a coffee, or just perch for a few moments and observe the theatre of life.

Locations: Whole Foods, 4th Ave. + Art Gallery Steps, Robson St.



Precedents: Whole Foods + Art Gallery Steps

Place a dot here if you like the idea of **ACTIVE EDGES** for the new park

Ingredient: **TRANSFORMATION**

Due to the design and detailing of the chainmail-like shroud as the operable walls to this stage, its can quickly transform both the experience of the stage and the park around it. The stage and the surrounding space can be used during the day or at night.

Park + Location: OMS Stage, Winnipeg



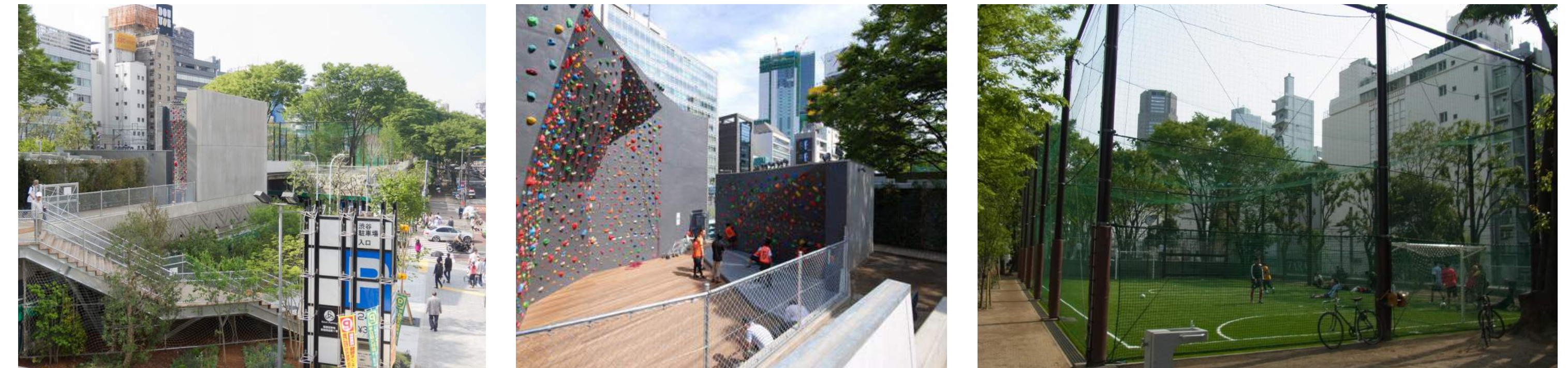
Owner: Winnipeg Exchange District BIZ | Designer: 5468796 Architecture Inc

Place a dot here if you like the idea of **TRANSFORMATION** for the new park

Ingredient: **MULTIPLE USES**

Miyashita Park is a retrofitted community park built upon an existing parkade structure that required upgrading. It provides an example of how multiple experiences and activities can co-exist in a busy downtown urban site where space is limited.

Park + Location: Miyashita Park, Tokyo



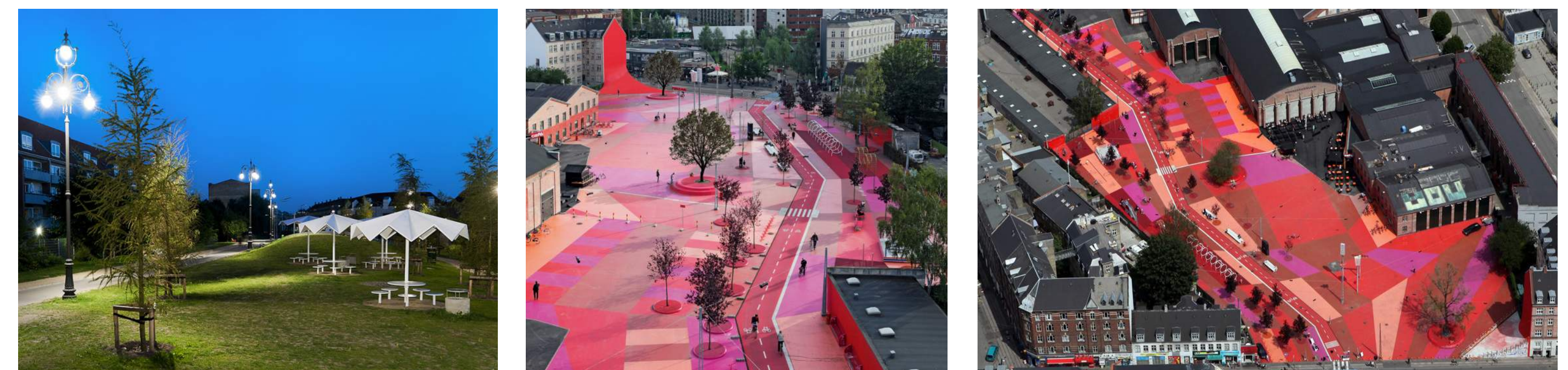
Owner: Shibuya, Tokyo | Designer: Atelier Bow Wow

Place a dot here if you like the idea of **MULTIPLE USES** for the new park

Ingredient: **IDENTITY**

Colour is used in dramatic and creative ways in this open space, blurring the realms between distinct recreation and those spaces for every day city living, while also defining a strong sense of place and bold identity.

Park + Location: Superkilen, Nørrebro, Copenhagen



Owner: Copenhagen Municipality | Designer: Topotek + BIG Architects + Superflex

Place a dot here if you like the idea of **IDENTITY** for the new park

VISION



What five words describe the experiences you would like to have in the future Kinistinâw Park?

PROGRAM



What three activities do you want to do in the future Kinistinâw Park?

BIG IDEAS



What is your big idea for the future Kinistinâw Park?

NEXT STEPS



USING YOUR INPUT

Thank you for attending today’s open house! We value your time and contributions to this process.

The community input that we receive today will help to create a preliminary design. We are also gathering input through an online survey.

In January, we will come back to the community to present the preliminary design and confirm ideas. The final design concept will be presented in March.

STAY INVOLVED



Fill out the survey on paper or online:
www.edmonton.ca/kinistinawpark



@CityofEdmonton #kinistinawpark



311



CMSParkAndFacilityDevelopment@edmonton.ca



At upcoming public events!

THE PROCESS

