

Heritage Valley Park and Ride

What:

The City is constructing a Park and Ride and Transit Centre at the northwest corner of Ellerslie Road and 127 Street.

When:

Start of Construction: Spring 2018

Finish Construction: Late 2019

Operational: Early 2020



Background

Southwest Edmonton will be home to a Park and Ride at the northwest corner of Ellerslie Road and 127 Street. The new integrated transit facility will include a future LRT station on the Capital Line South LRT Extension, a transit centre, and the Park and Ride.

In July 2008, City Council approved the Concept Plan for the Capital Line South LRT Extension from Century Park to the south city limit (41 Avenue SW). The Concept Plan defined the alignment (where the track fits in the roadway) and station locations, including a station north of Ellerslie Road.

The site for a permanent Park and Ride was recommended as part of the preliminary design of the Capital Line South LRT Extension and was approved by City Council in April 2009.

In the fall of 2016, the Heritage Valley Park and Ride was approved by the federal government as eligible for Public Transit Infrastructure Funding (PTIF).



The Project

The Heritage Valley Park and Ride has an ultimate capacity of approximately 1,900 parking stalls. The site has been designed to simplify transit to transit connections, while accommodating cycle and pedestrian links into adjacent neighbourhoods. Land has also been reserved to the west of the future LRT tracks to accommodate potential Transit Oriented Development (TOD).

PCL Construction is the general contractor for the site. Construction of Phase 1 will begin in 2018 and will be staged over two years (2018-2019).

Phase 1 construction will include:

- A 15-bay transit centre, with a heated building and several unheated, sheltered waiting areas
- 1,100 parking stalls
- Two Kiss and Ride locations
- Reconstruction of a portion of 127 Street, for access to and from the Park and Ride
- A Stormwater Management Facility (storm pond) north of the Park and Ride lot



HERITAGE VALLEY PARK AND RIDE
ULTIMATE SITE PLAN
NTS



Phase 1 of the Heritage Valley Park and Ride has been designed to accommodate future expansion (to the ultimate capacity of 1,900 stalls and 20 bus bays) as well as the addition of LRT. Such an expansion may also include enhanced landscaping features and additional pedestrian/cycle connections into adjacent neighbourhoods, and will be based on service demands and funding availability.

Traffic and Pedestrian Impacts

Traffic impacts during construction

- Increased congestion due to construction vehicle traffic
- Reduced speed limits during construction activities near Ellerslie Road and 127 Street

Pedestrian impacts during construction

- Construction noise
- Construction dust
- All weather pedestrian route to be maintained during construction on the North side of Ellerslie Road

Phase 1



LEGEND

- | | | | |
|--|---------------------------------|--|---------------------------------------|
| | SHARED USE PATHWAY | | TRANSIT CENTRE PEDESTRIAN CONNECTIONS |
| | EXTERIOR SITE SIDEWALKS | | BIKE PARKING |
| | PARK & RIDE PEDESTRIAN NETWORKS | | FUTURE SHARED USE PATHWAY |

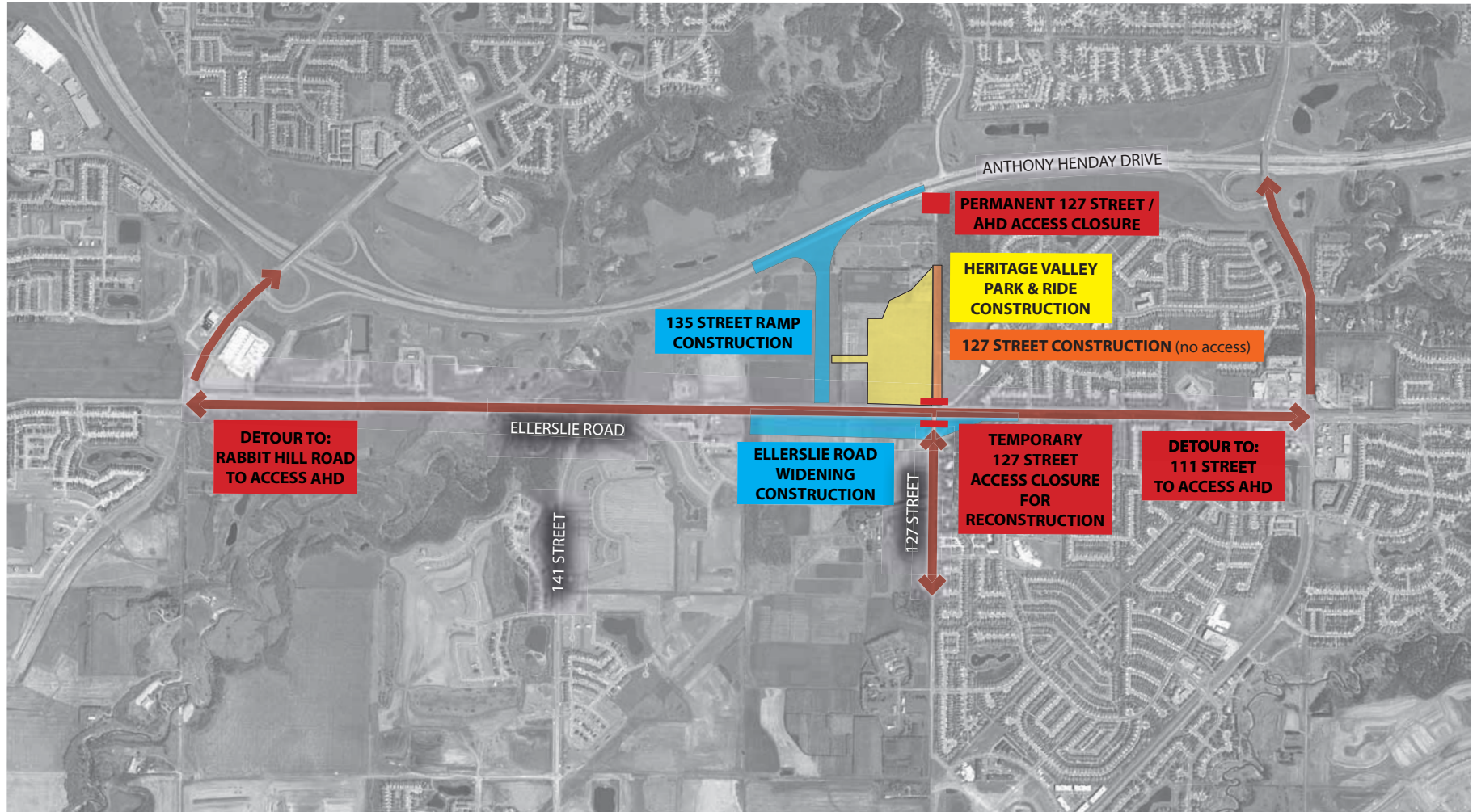
Construction Staging Plan: Summer 2018 - Spring 2019



- Open Roadway
- 135 Street & Ellerslie Road Widening Construction
- Heritage Valley Park & Ride Construction
- Temporary Closure of Ellerslie Road (utility work) West of 141 Street until approximately mid-June 2018



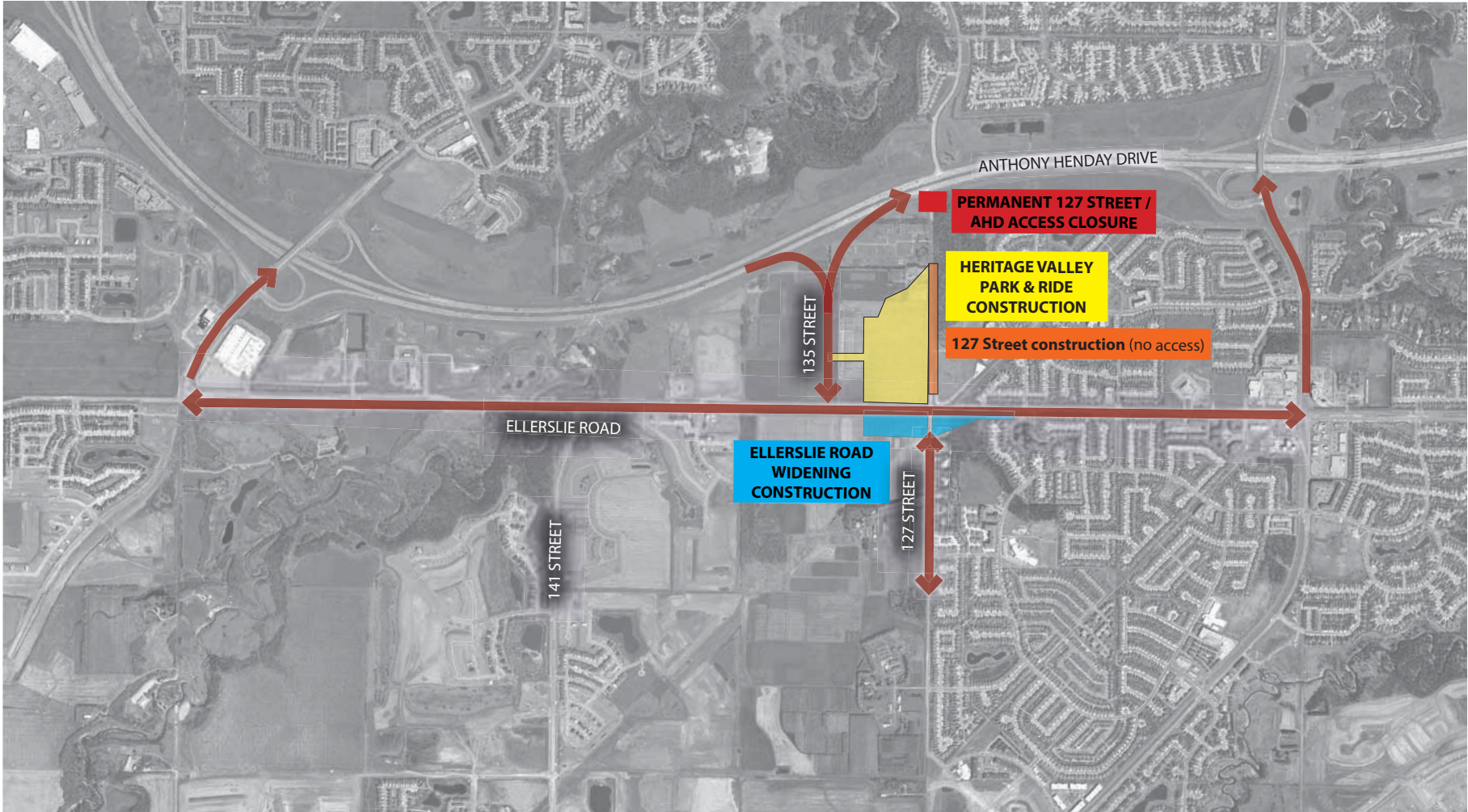
Construction Staging Plan: Spring / Summer 2019




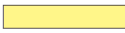



- Open Roadway
- Access Closure
- 135 Street & Ellerslie Road Widening Construction
- Heritage Valley Park & Ride Construction
- 127 Street Construction



Construction Staging Plan: Summer / Fall 2019



-  Open Roadway
-  Access Closure
-  Ellerslie Road Widening Construction
-  Heritage Valley Park & Ride Construction
-  127 Street Construction



Ultimate Site Plan



LEGEND

- SHARED USE PATHWAY
- EXTERIOR SITE SIDEWALKS
- PARK & RIDE PEDESTRIAN NETWORKS
- ↔ TRANSIT CENTRE PEDESTRIAN CONNECTIONS
- BIKE PARKING

Shuttle Bus Service



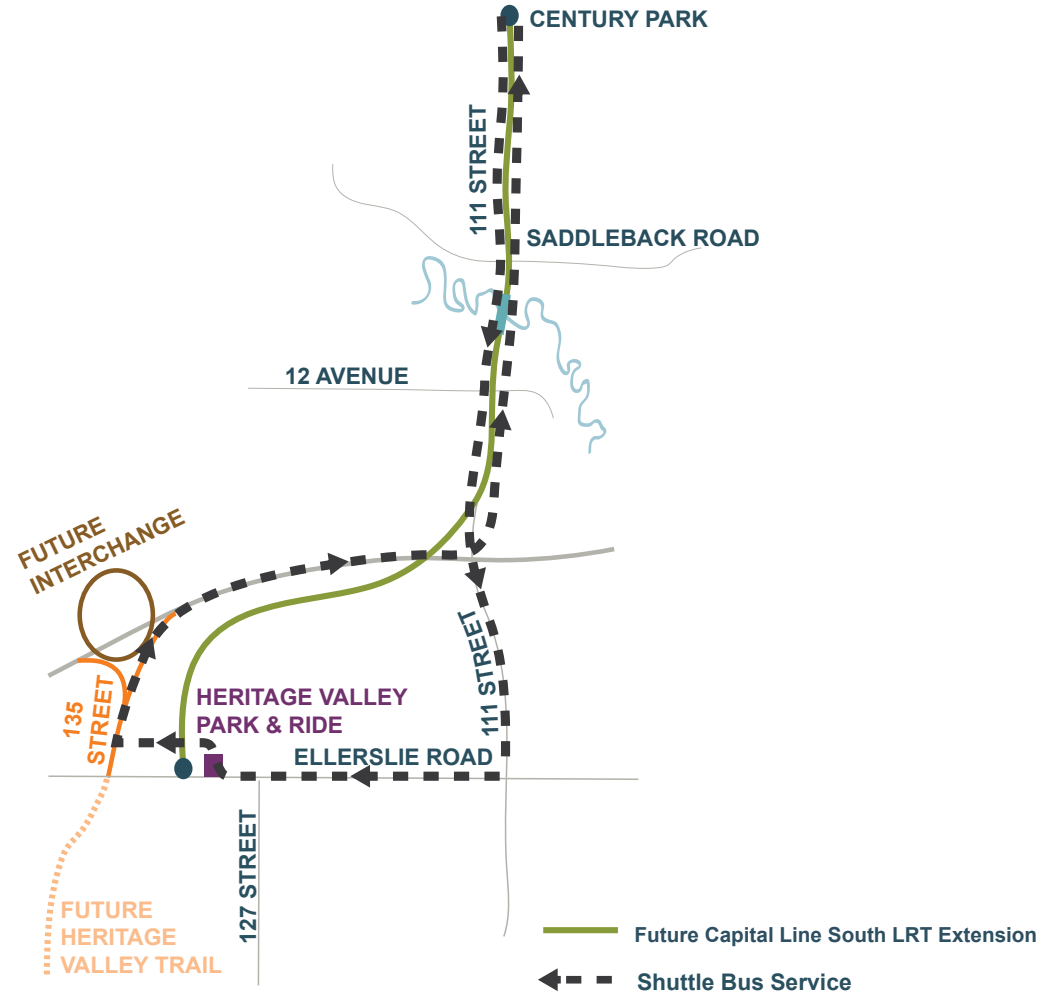
The Transit Centre has an ultimate capacity of 20 bus bays. The first 15 will be built as part of Phase 1, providing transit service for Southwest Edmonton. Bus routes are to be confirmed in conjunction with the City of Edmonton's overall Bus Network Redesign project.

The Transit Centre will also be used to provide a shuttle service to and from Century Park Transit Centre, until such time that the Capital Line LRT is extended to Ellerslie Road.

Proposed shuttle service:

- Approximate 5 min frequency Weekday AM/PM Peak
- Approximate 10-15 min frequency Weekday midday & evening
- Approximate 10-15 min frequency on Weekends
- One-way travel time: 8-12 minutes

Operational: Early 2020



Landscape Amenities



BIOSWALE MEDIAN PERSPECTIVE VIEW



PLANTER SEAT WALL PRECEDENT IMAGE



BICYCLE PARKING PERSPECTIVE, LOOKING NORTH

Ultimate Transit Centre Perspective



Transit Centre Perspective

