

WELCOME!

...to Stakeholder Event #2 for the future KINISTINÂW PARK in The Quarters Downtown.



PROJECT OVERVIEW

As part of The Quarters Downtown, the City of Edmonton is developing a new park for the neighbourhood, called Kinistinâw Park. The park is intended to be a community gathering space and to attract further redevelopment to the area.

PROJECT OBJECTIVES

- Improve connectivity to open spaces within The Quarters Downtown.
- Make The Armature and Kinistinâw Park a focal point and a year-round gathering place in The Quarters Downtown.
- Use environmentally friendly sustainable landscape design practices.
- Ensure the publicly accessible open space is designed, maintained, and managed to help keep it vibrant, safe, and clean.

WE WANT TO HEAR FROM YOU!

We want to hear your feedback for Kinistinâw Park regarding the principles, vision, program elements, + preliminary concept option diagrams.

Today we would like you to **(1) review the information** and **(2) provide your comments on the boards** using the materials provided. Members of the project team are here to answer your questions.

THE SITE

Today...

The site today is an under-used open space in The Quarters Downtown.

PROJECT ORIGIN

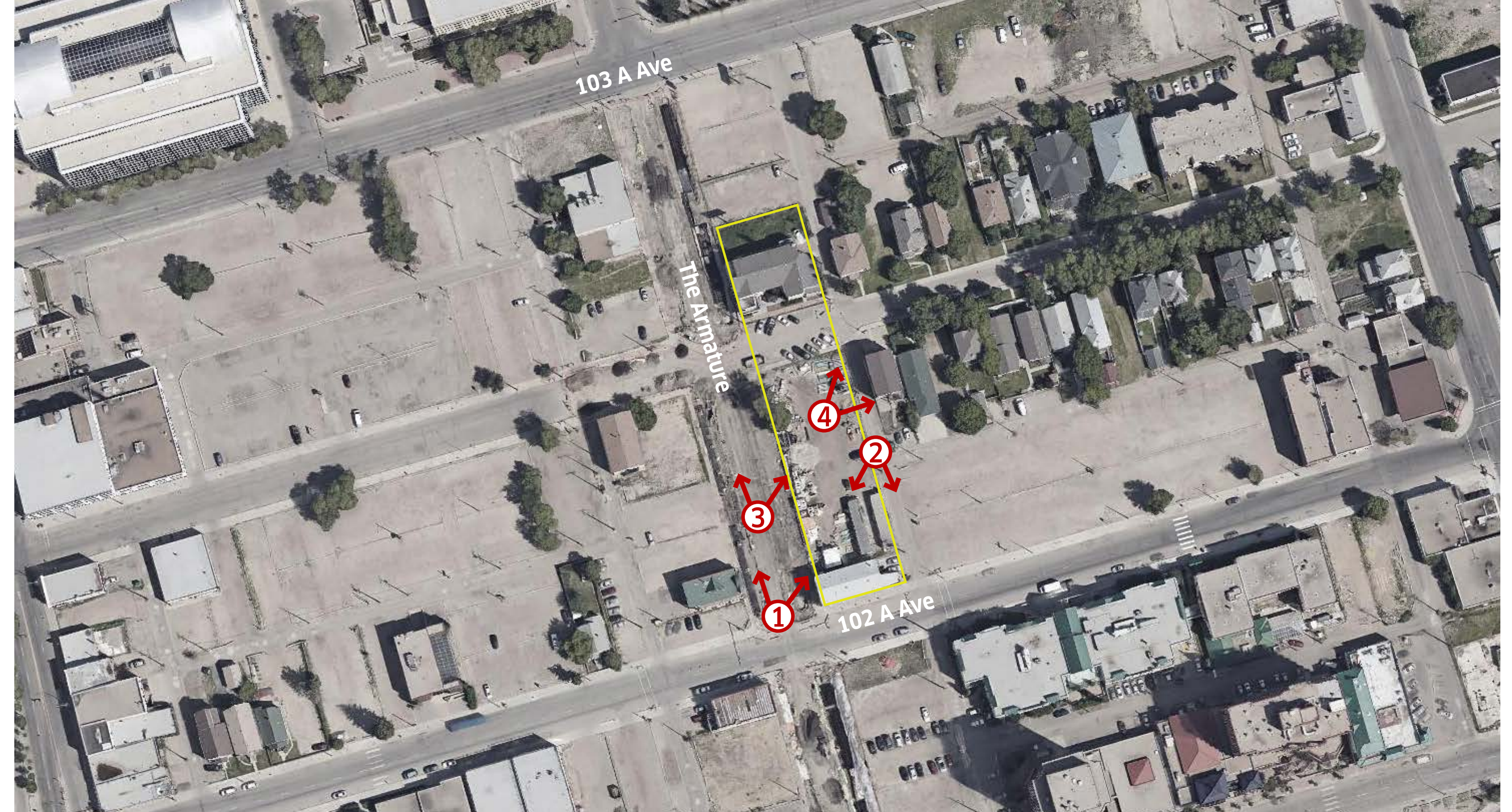
Kinistinâw Park is a key component of the open space network of The Quarters and supports The Armature as the core framework around which The Quarters is built. The Armature is envisioned as a highly walkable, pedestrian-focused high street that connects The Quarters to the North Saskatchewan River Valley. Kinistinâw Park is the culmination of that journey from the River to the heart of the Neighbourhood.

A preliminary concept plan was completed for Kinistinâw Park (then called New City Park) in 2012 in conjunction with the development of the concept design of The Armature.

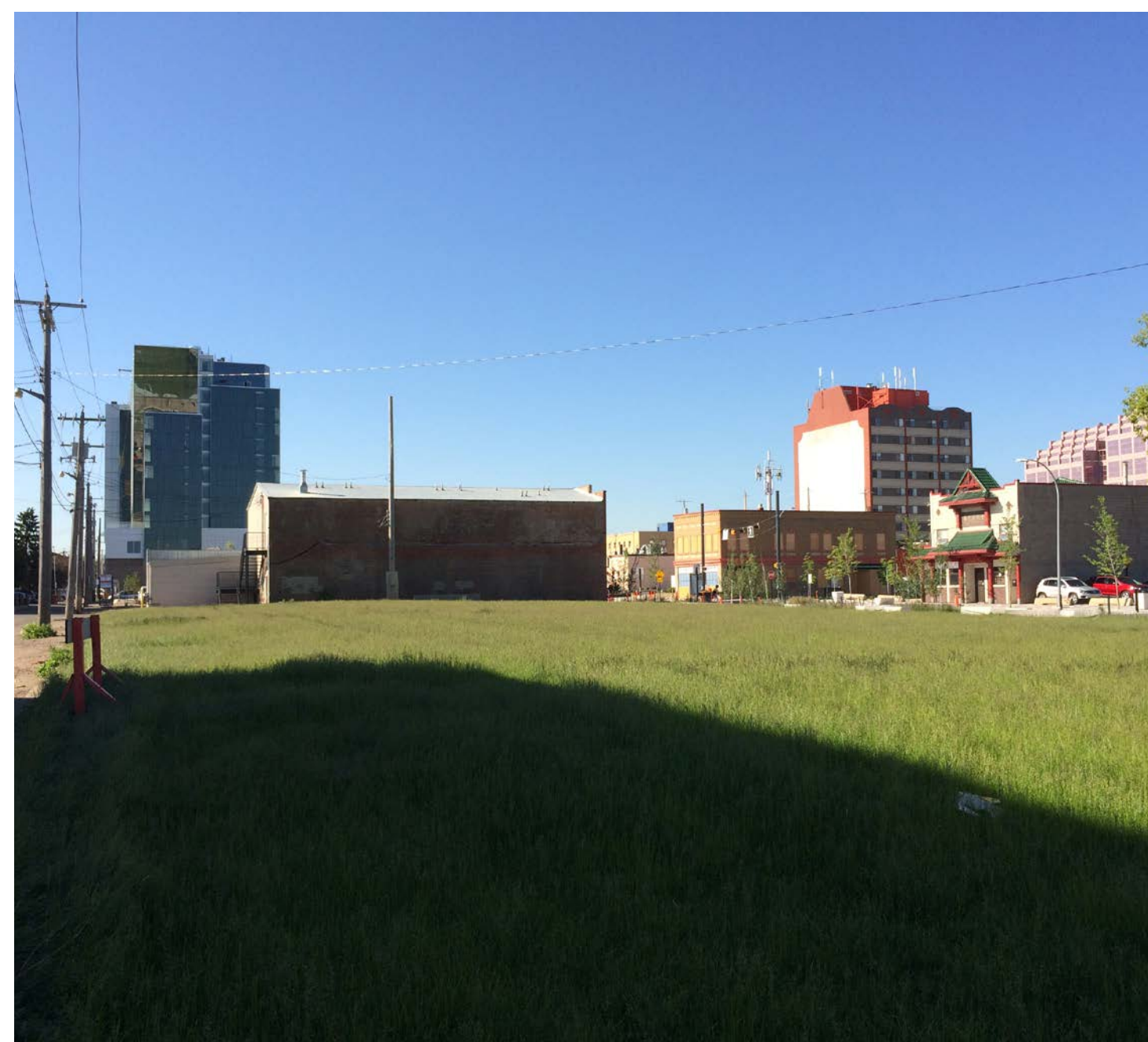
This ongoing design process intends to establish a comprehensive vision based on community input to develop a phased approach to creating a new place for The Quarters, the neighbourhood of Boyle Street, and the surrounding downtown.



① Edge of park from 102 A Ave



Aerial of park



② Edge of park along lane adjacent to existing residential



③ Edge of park along The Armature



④ Existing open space

WHAT WE'VE DONE

Internal Stakeholder Workshop #1

November 8, 2016

—

Community Open House #1

November 8, 2016

—

Pop Up Event #1 | Downtown Farmer's Market

December 3, 2016

—

Student Workshop | St. Teresa of Calcutta School

December 16, 2016

—

External Stakeholder Interviews

December 12, 2016 to January 10, 2017

—

Online Survey

November 9, 2016 to January 13, 2017

—

On-Site Park Signage Installed

February 10, 2017

WHAT WE'VE HEARD

Emerging Core Values & Characteristics

The following six core values have emerged from input provided by members of the public, community organizations, and City staff.



EMPHASIS ON SAFETY



INTEGRATED GREEN



**UNIQUE IDENTITY /
HONOURING SENSE OF PLACE**



**CELEBRATING
COMMUNITY**



**OPPORTUNITIES
FOR PLAY**



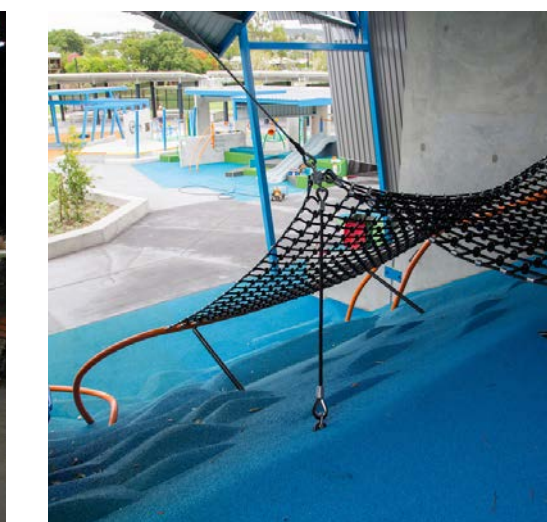
**STRATEGIC PROGRAMS &
COMMUNITY PARTNERS**

Participants also identified the following as the top five desired park “ingredients”.

PROGRAMMING



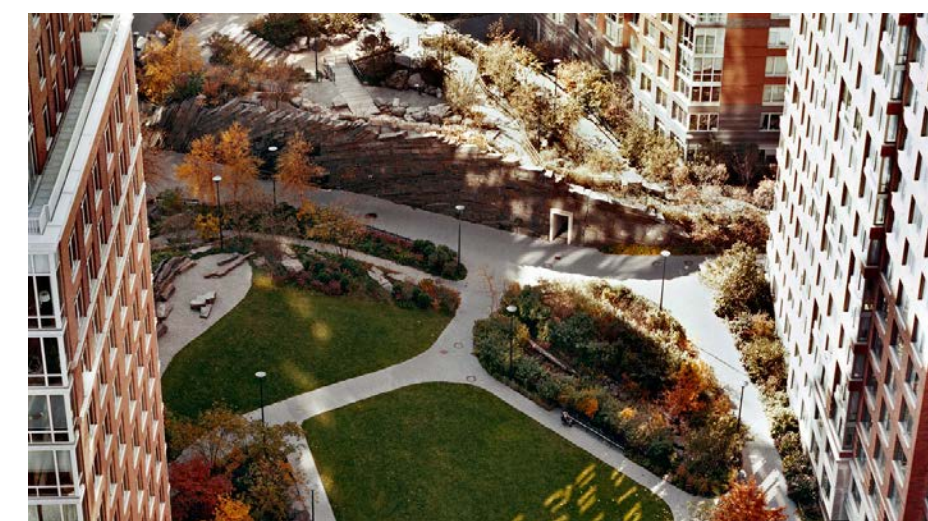
PLAY



CONNECTIVITY



NATURE



FOOD



PROJECT PRINCIPLES

Kinistinâw Park should...

...be a **safe**, **welcoming**, and **inclusive** space for all users, in all seasons, and at all time of the day.

...be an extension of The Armature that provides for both **formal activities** and **events**, as well as **informal** and **spontaneous experiences**.

...have a **unique identity** and **character** that is reflective of the **rich history** of the surrounding community and **positively contributes** to the revitalization of The Quarters Downtown.

...incorporate **natural elements** and integrate opportunities for **play**.

...provide **amenities** that consider the needs of park users.

...leverage opportunities for **partnership** and innovative models of operation/programming by continuing to **engage** with the surrounding community organizations, social agencies, and businesses.

Do you agree with the proposed project principles? What could be changed or added? Have we missed anything?

Use the post-it to share your thoughts here.

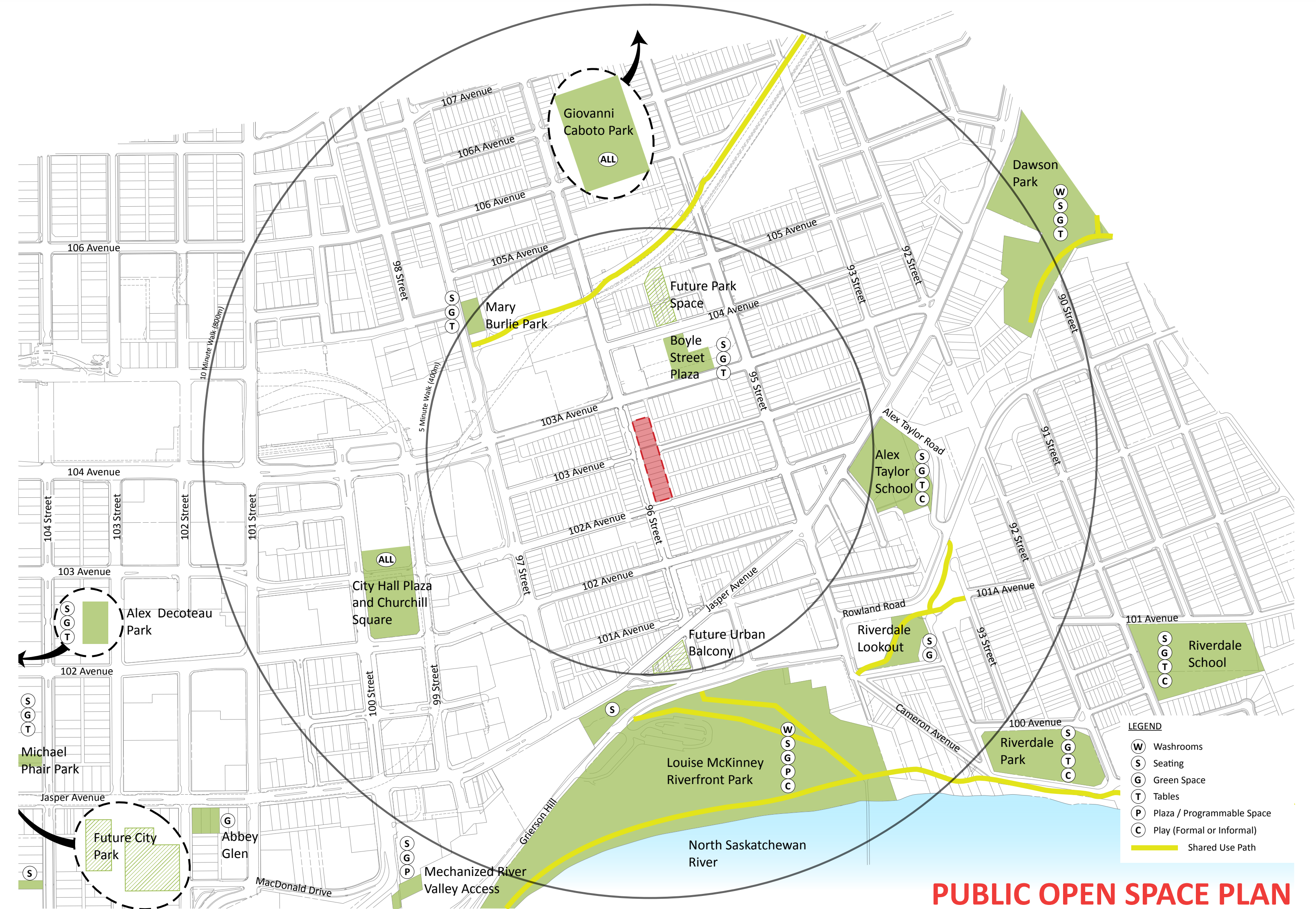
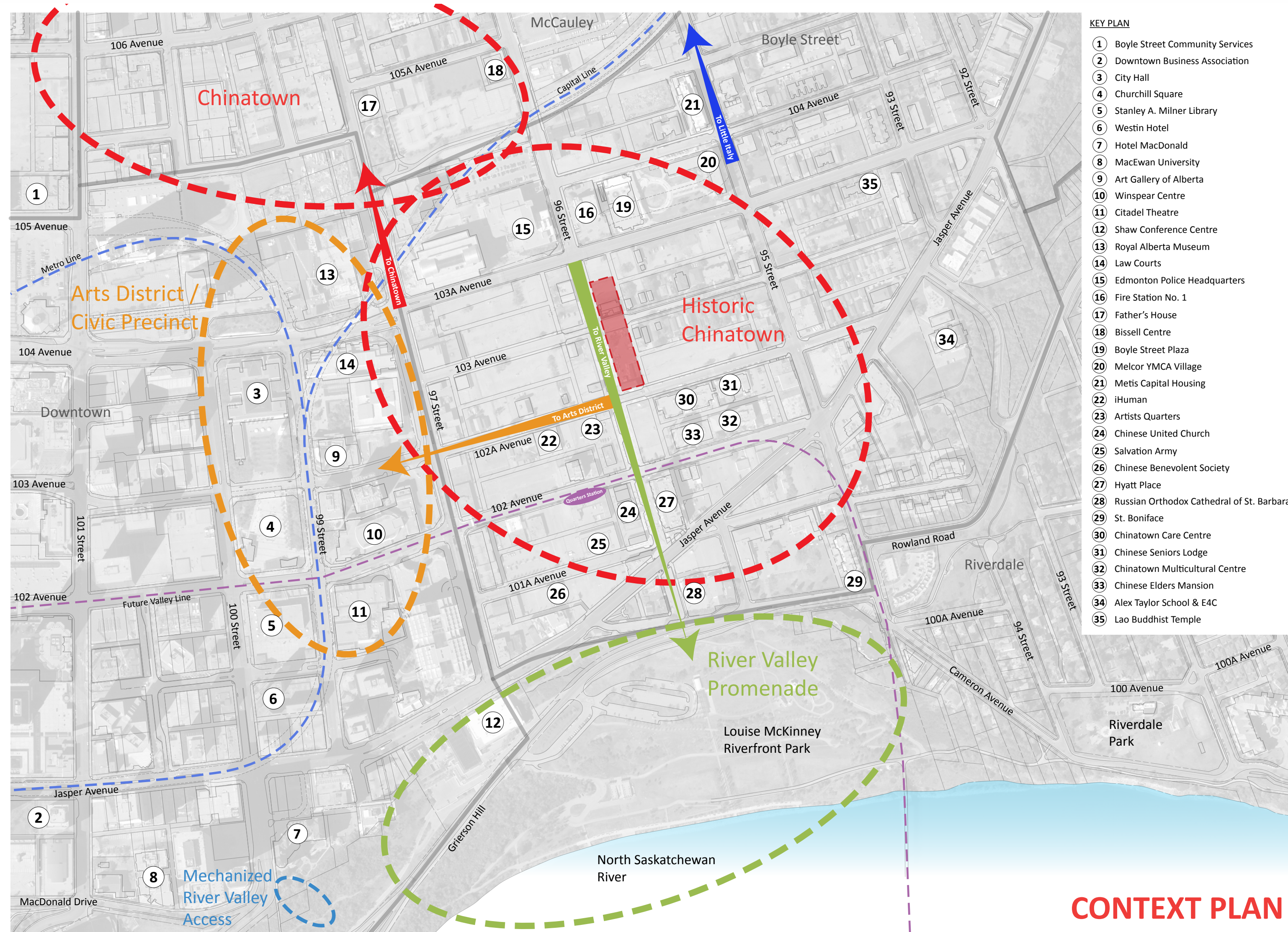
PROJECT VISION

As the centre piece of The Quarters Downtown, Kinistinâw Park is an **inviting** and **safe** urban park. It reflects the **past**, **present**, and **future** stories of the community, encouraging everyday **enjoyment** and special opportunities for **celebration** and **gathering**. Integrated with The Armature and surrounding streets, the park is a **dynamic** and **well-loved** neighbourhood **destination** that is source of local pride.

Does the proposed vision reflect what you
imagine for Kinistinâw Park?
Have we missed anything?

Use the post-it to share your thoughts here.

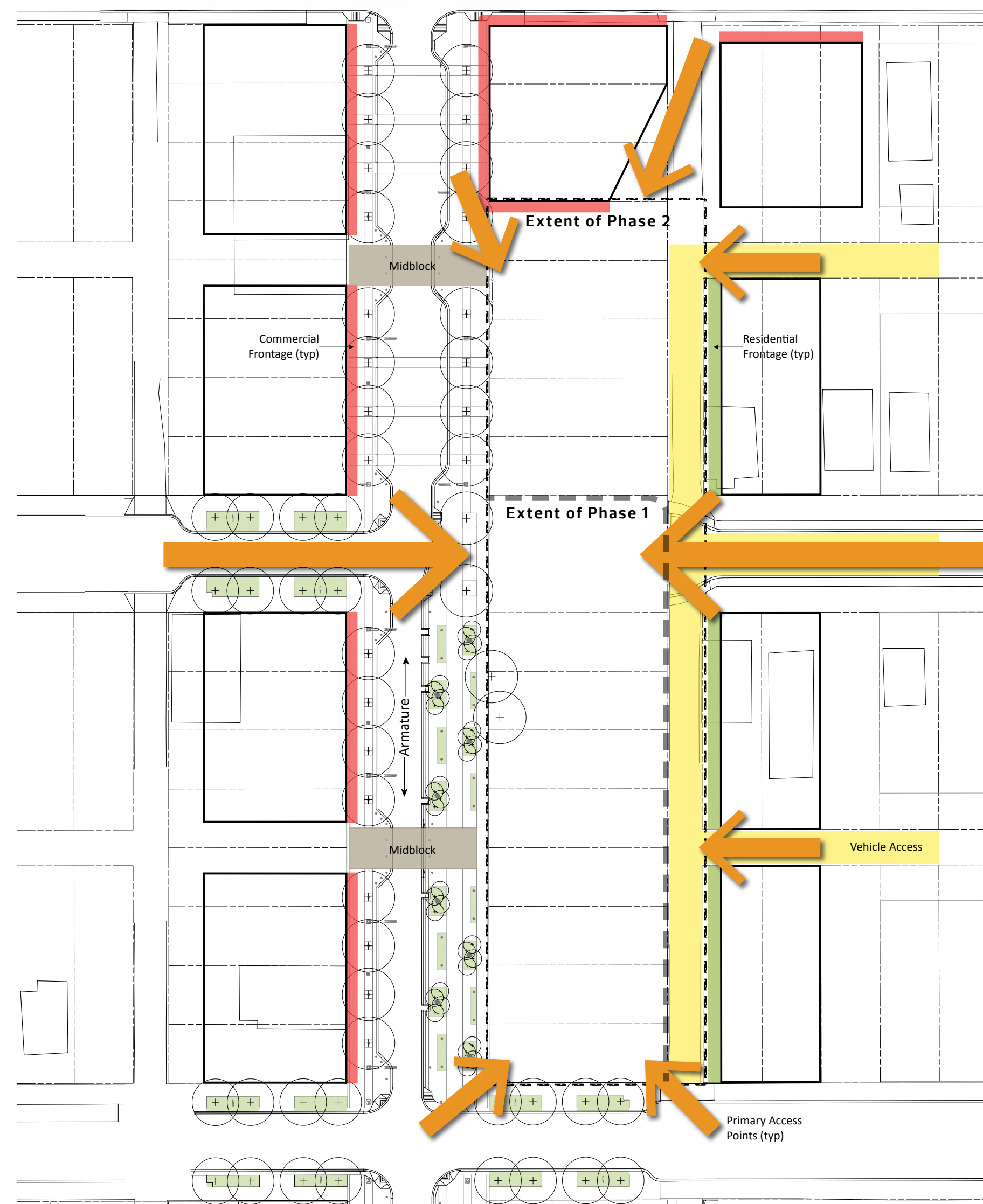
SITE ANALYSIS DIAGRAMS



Have we missed anything?

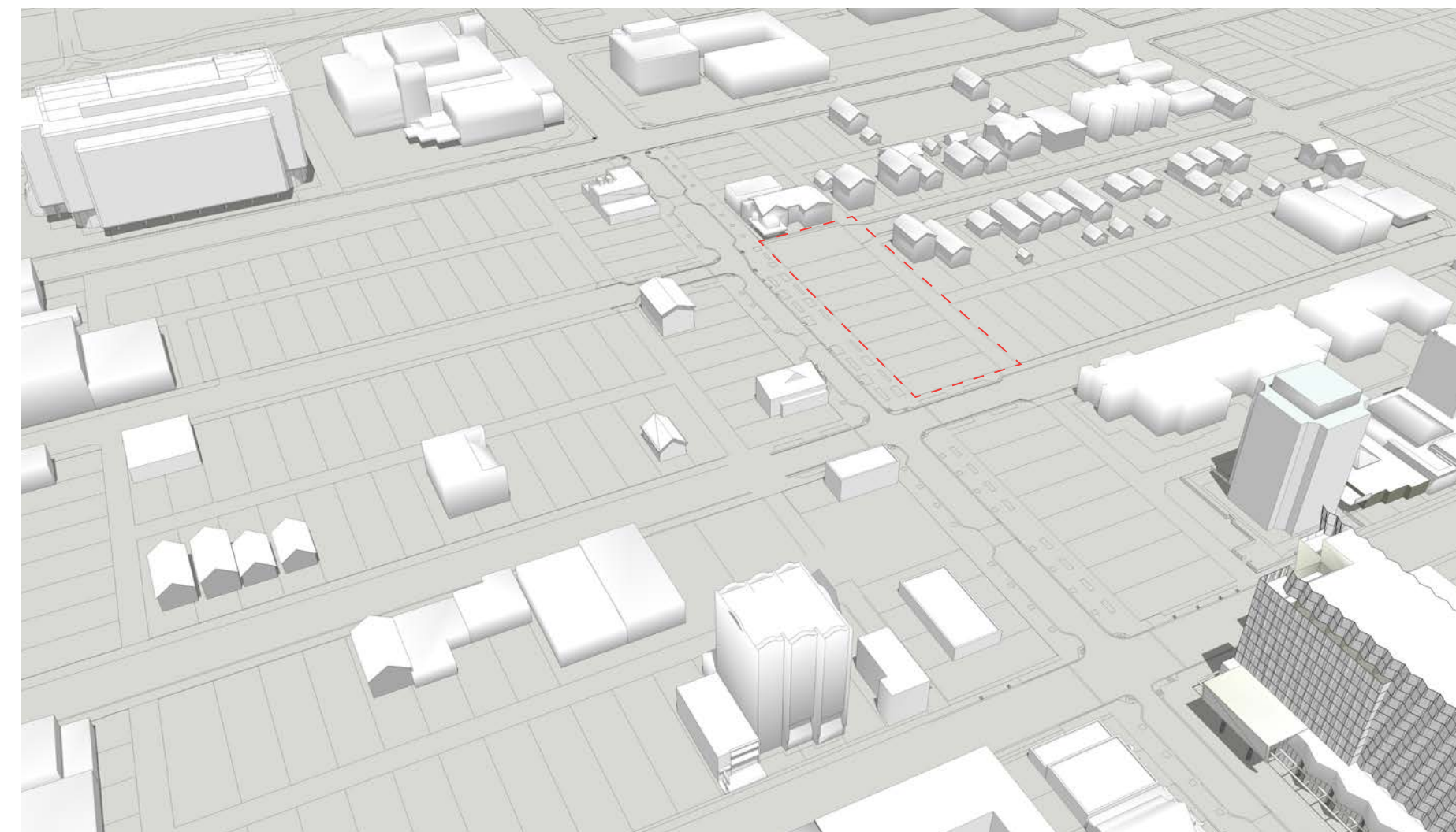
Use the post-it to share your thoughts here.

SITE ANALYSIS DIAGRAMS

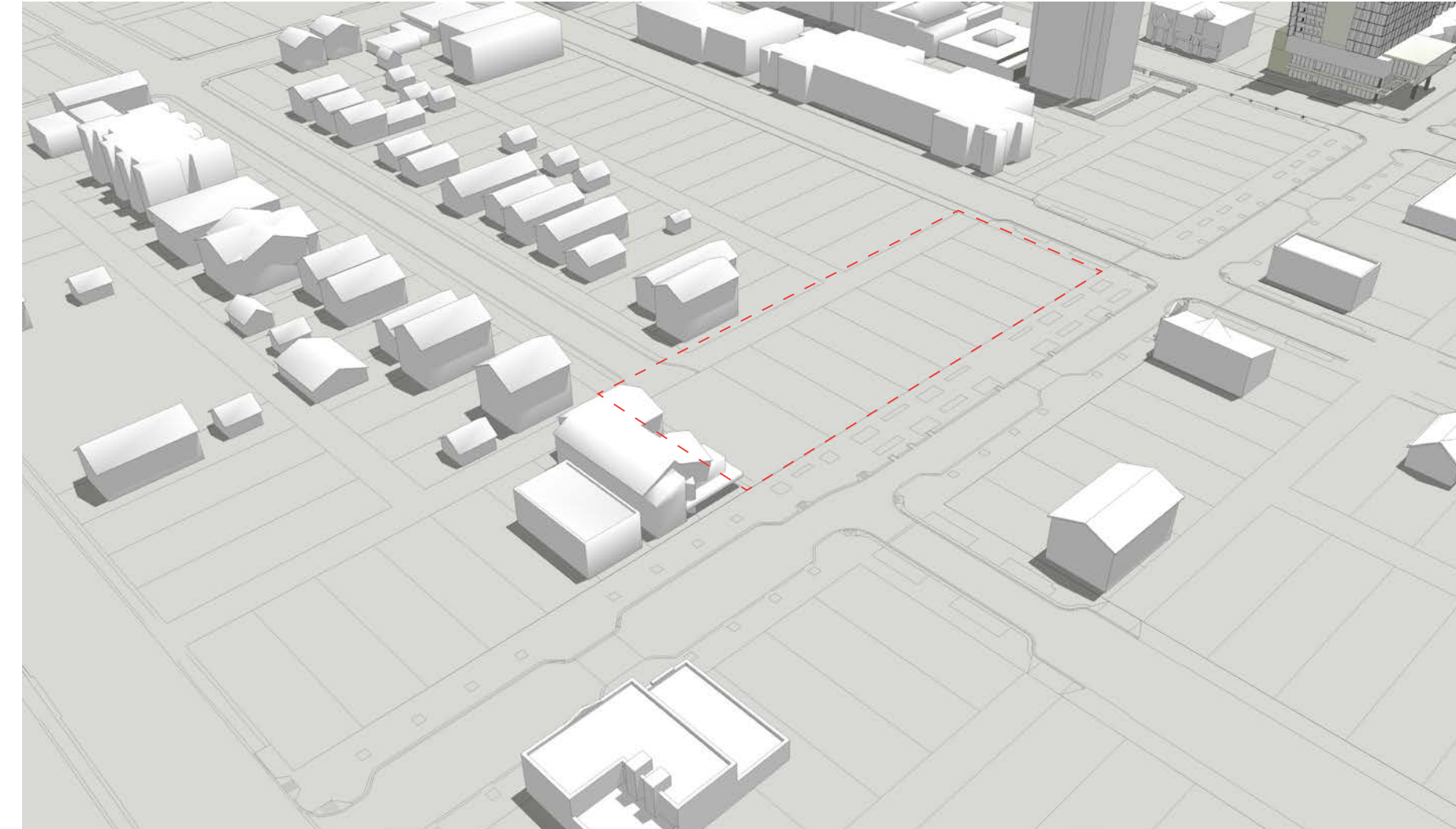


SITE CONTEXT

VIEW FROM SOUTHWEST

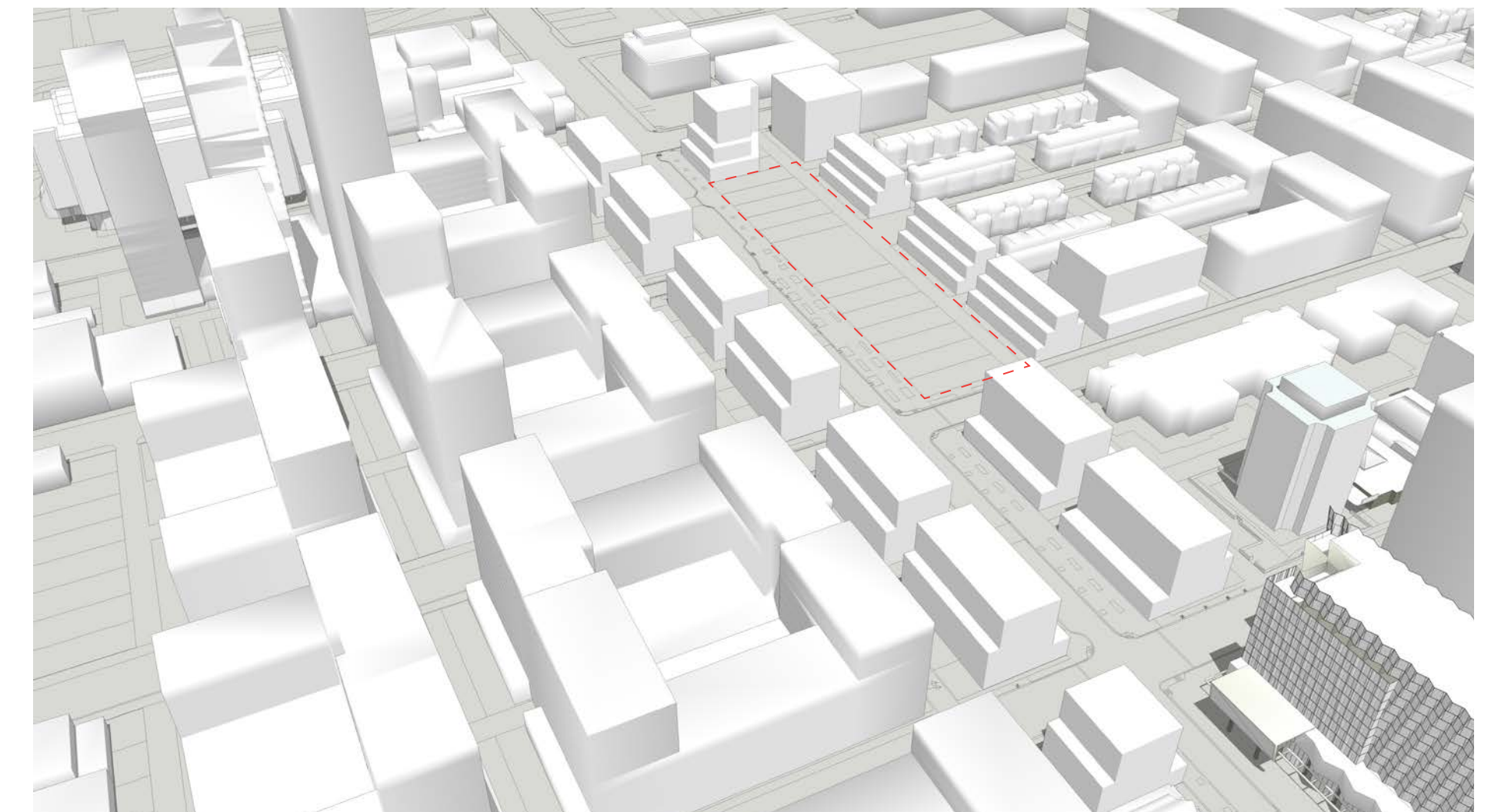


VIEW FROM NORTHWEST

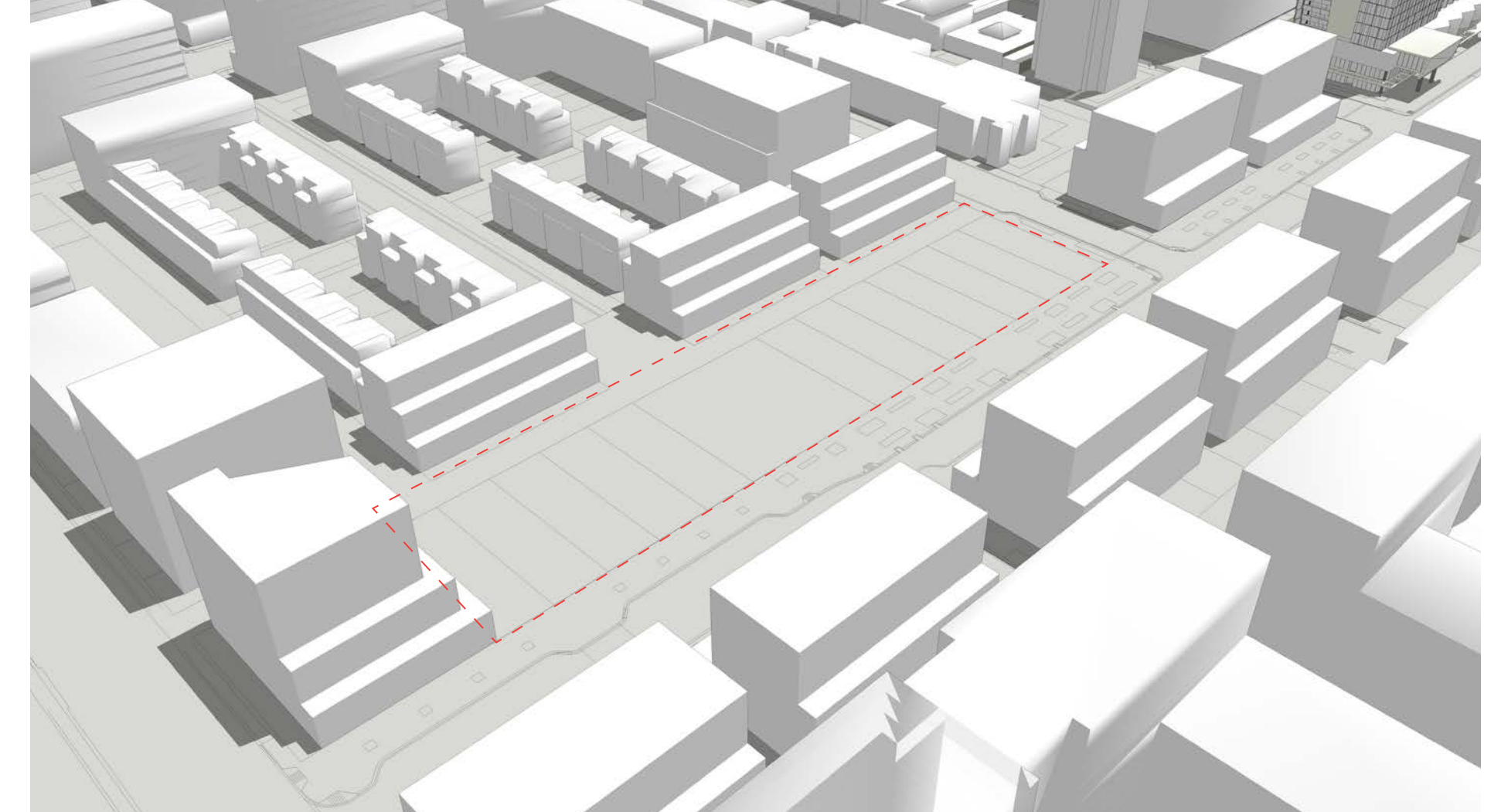


EXISTING BUILT FORM

VIEW FROM SOUTHWEST



VIEW FROM NORTHWEST



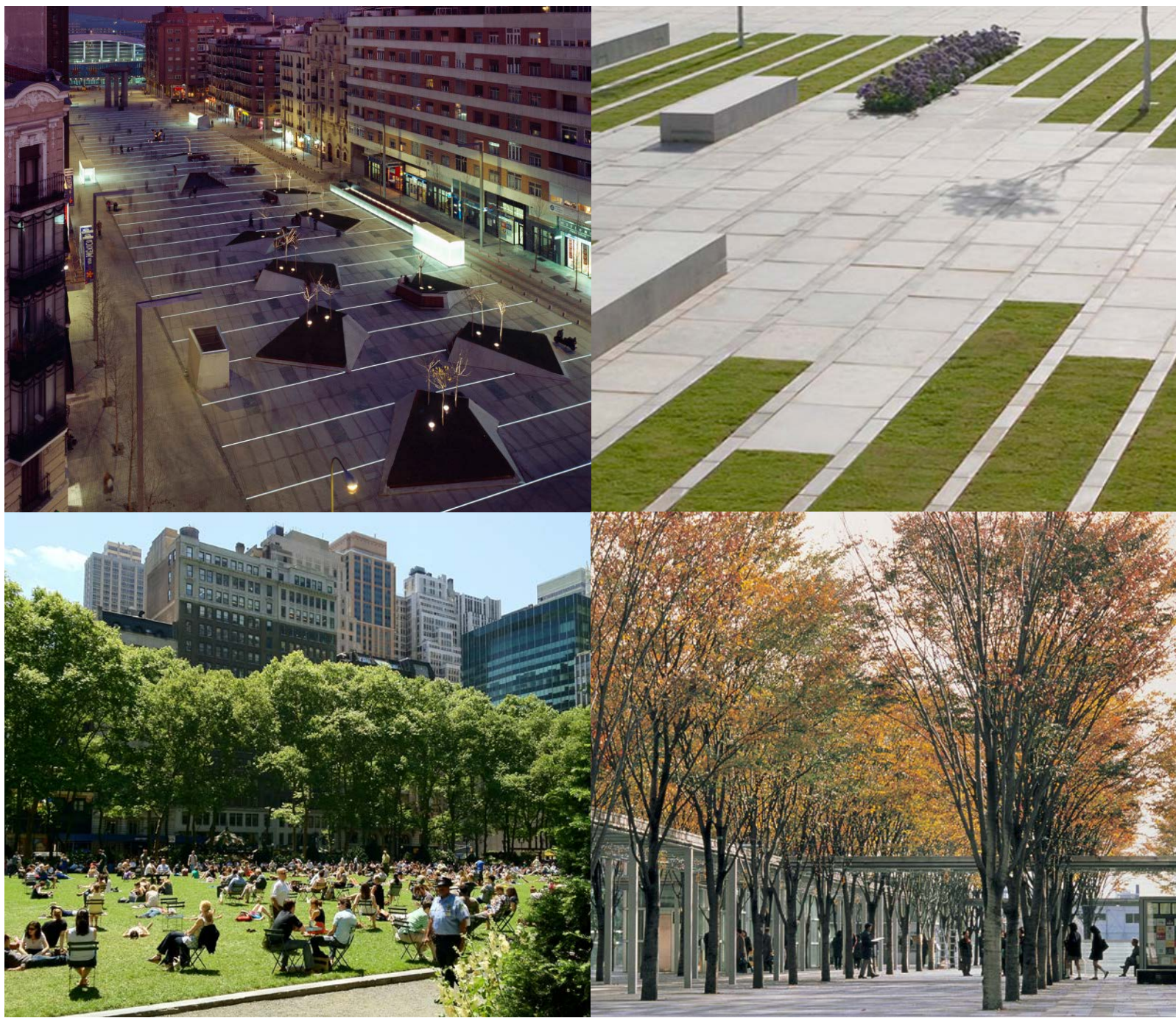
POTENTIAL ULTIMATE BUILT FORM

Have we missed anything?

Use the post-it to share your thoughts here.

PROPOSED SITE PROGRAM ELEMENTS

FLEXIBLE SPACE



- 1 RAISED + SUNKEN PLANES
- 2 PAVED SURFACE AT DIFFERENT SCALES
- 3 SOFT SURFACE
- 4 TREE CANOPY FOR SHADE

PLANTING



- 1 ORNAMENTAL PLANTINGS
- 2 SEASONAL INTEREST
- 3 HABITAT FOR BIRDS & INSECTS
- 4 FRUIT BEARING SHRUBS

SEATING



- 1 DIFFERENT FOMATS FOR LOUNGING
- 2 GROUP SEATING
- 3 MOVABLE FURNITURE
- 4 INTEGRATED WITH PLANTING

INTERPRETATION



- 1 MULTI-CULTURAL
- 2 COMMUNITY
- 3 HISTORICAL
- 4 ICONIC

Which of the proposed site program elements do you like/dislike and why?

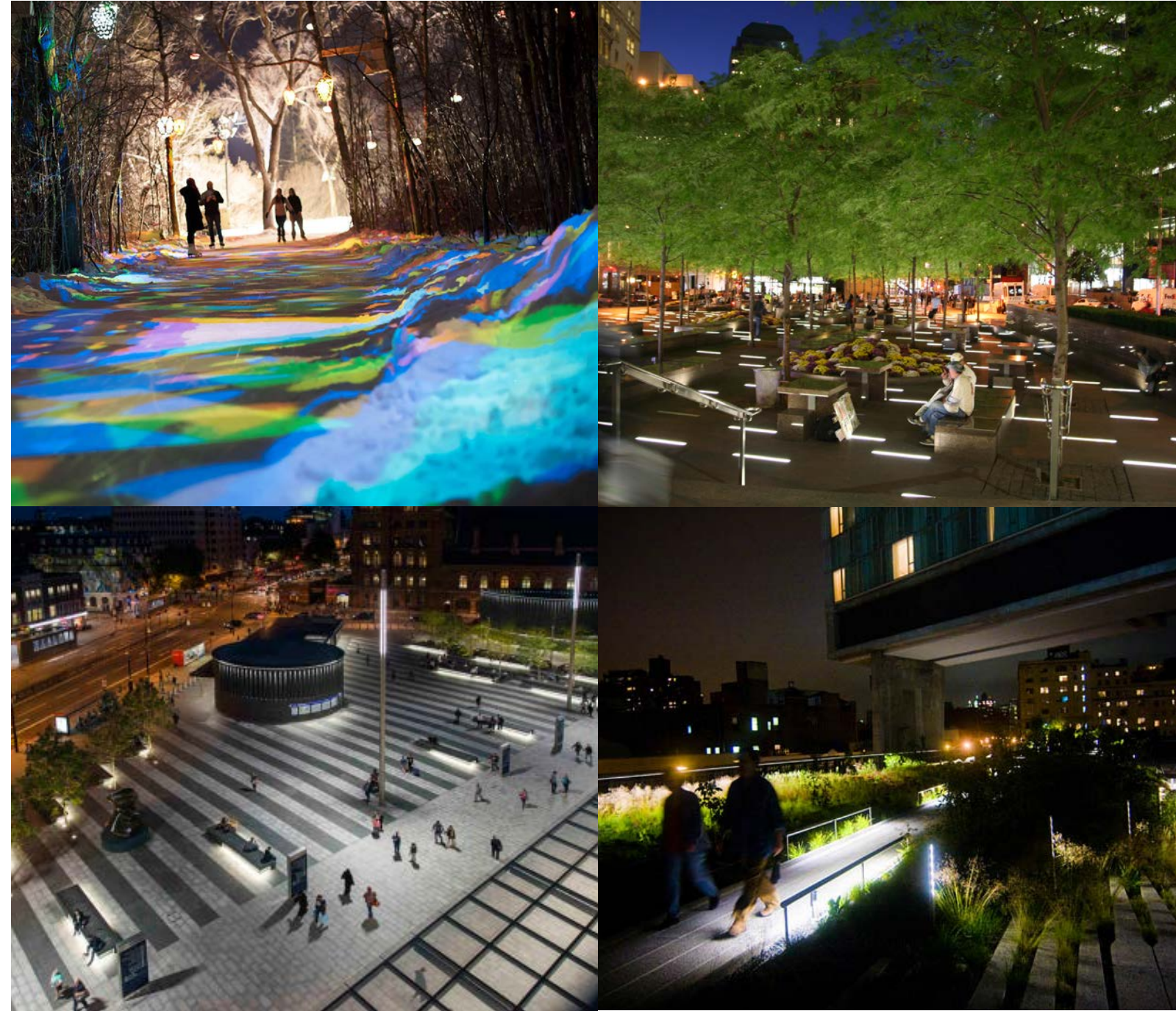
What are the “must haves” for the success of Kinistinaw Park?

What are the “deal breakers” that are constraints for the park?

Use the stickers to select the images that you like and use the post-it to share your thoughts here.

PROPOSED SITE PROGRAM ELEMENTS

LIGHTING



- 1 WINTER
- 2 PEDESTRIAN SCALE
- 3 PLAZA LIGHTING
- 4 LANDSCAPE LIGHTING

PLAY ELEMENTS



- 1 LARGE FORMAT/CUSTOM ELEMENTS
- 2 ART
- 3 NATURAL ELEMENTS
- 4 SKATING

WATER FEATURES



- 1 JETS
- 2 REFLECTION POOLS
- 3 WATERWALL
- 4 STREAMS

BUILT ELEMENTS



- 1 PROGRAMMABLE
- 2 INTERACTIVE
- 3 SHADE
- 4 SEASONAL ACTIVATION

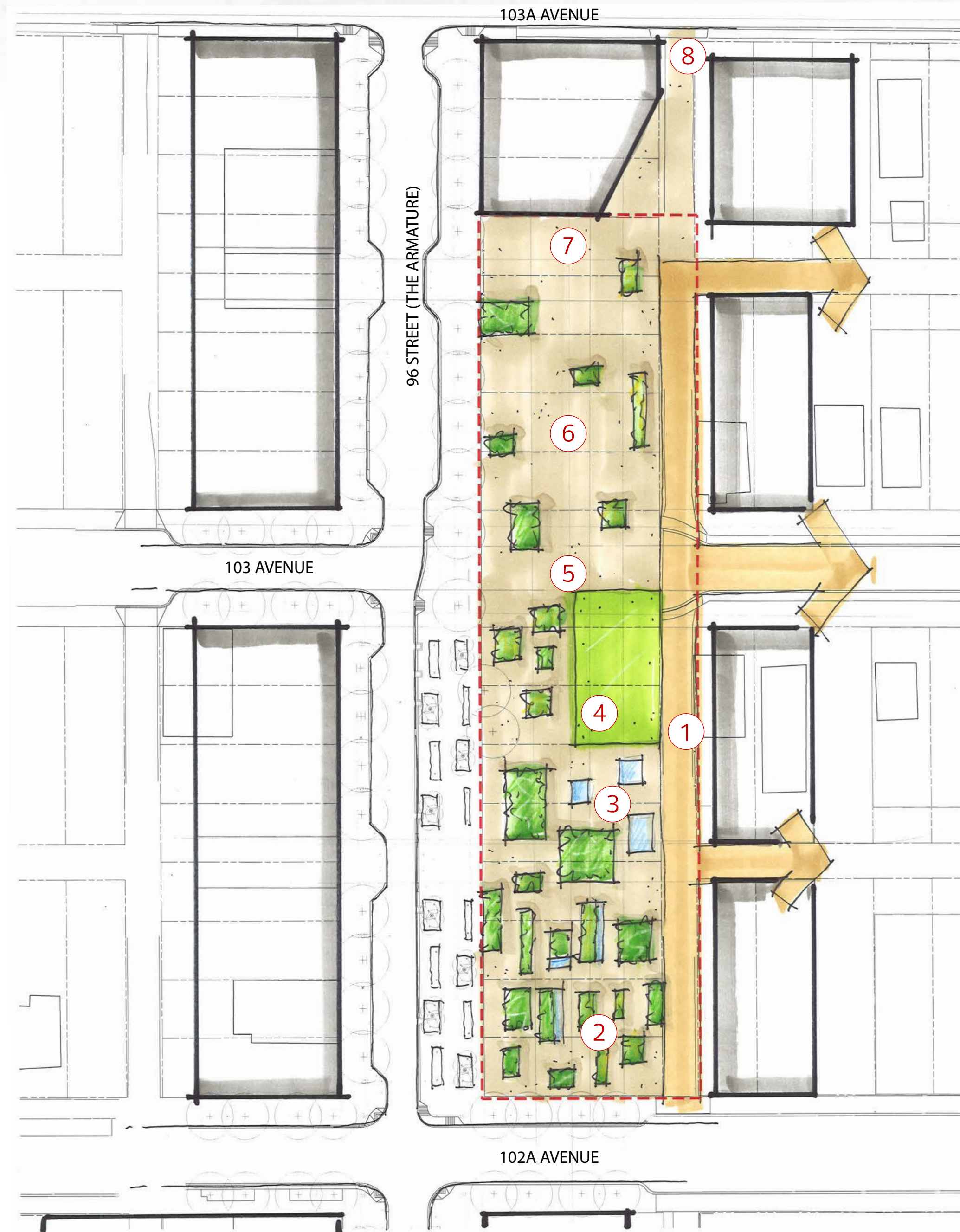
Which of the proposed site program elements do you like/dislike and why?

What are the “must haves” for the success of Kinistinaw Park?

What are the “deal breakers” that are constraints for the park?

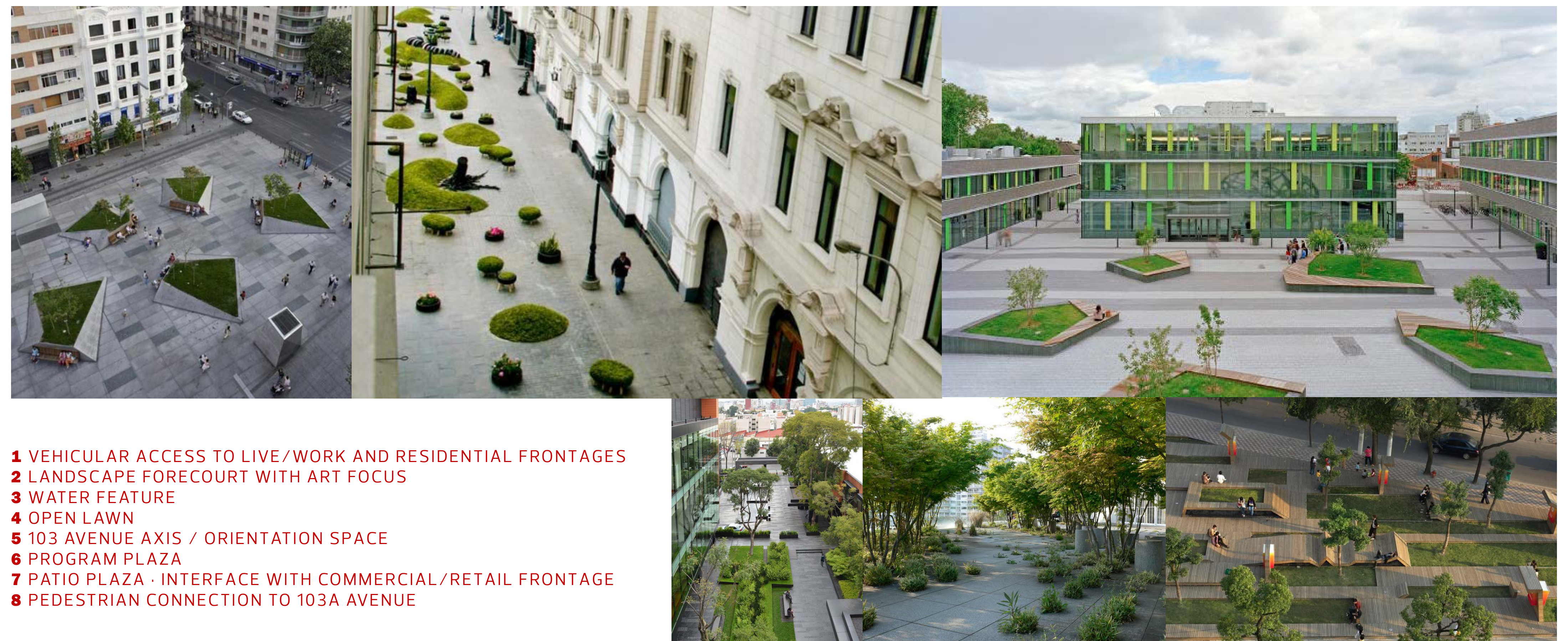
Use the stickers to select the images that you like and use the post-it to share your thoughts here.

PRELIMINARY CONCEPT DIAGRAMS



ERODED PLAZA

Eroded Plaza is a reference to both the urban and cultural context of the area. Emerging from the surrounding hardscape of The Armature are niche patches of soft landscapes. Each space is distinct, representative of the individual cultures that have shaped the area, creating a patchwork of influences that define the community.



- 1 VEHICULAR ACCESS TO LIVE/WORK AND RESIDENTIAL FRONTAGES
- 2 LANDSCAPE FORECOURT WITH ART FOCUS
- 3 WATER FEATURE
- 4 OPEN LAWN
- 5 103 AVENUE AXIS / ORIENTATION SPACE
- 6 PROGRAM PLAZA
- 7 PATIO PLAZA · INTERFACE WITH COMMERCIAL/RETAIL FRONTAGE
- 8 PEDESTRIAN CONNECTION TO 103A AVENUE

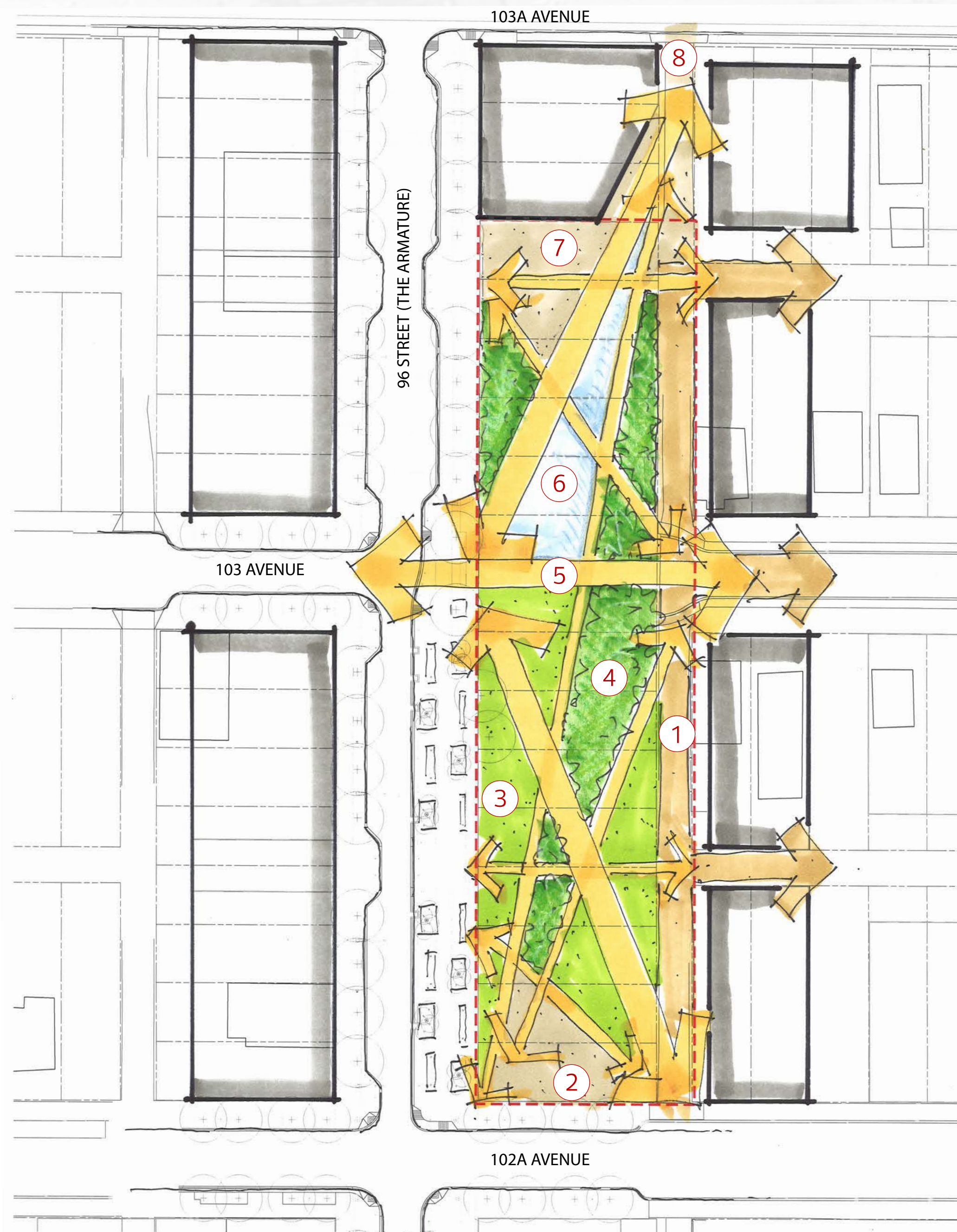
What do you like about the Preliminary Concepts?
What do you dislike about the them? Are there any
operating impacts that we need to be aware of
Is there anything else that we need to consider
prior to moving forward?

Use the post-it notes to share your thoughts here.

PRELIMINARY CONCEPT DIAGRAMS

JOURNEYS

The Journeys concept is illustrative of the diverse journeys that have been imprinted onto the site and surrounding area by residents and visitors. Crisscrossing the landscape, these paths signify the historic physical, personal, artistic, and cultural travels resulting in an angular form which emphasizes the existing desire lines and informs ultimate program of the concept.



- 1 VEHICULAR ACCESS TO LIVE/WORK AND RESIDENTIAL FRONTAGES
- 2 ART PLAZA · INTERFACE WITH 102A AVENUE
- 3 LAWN
- 4 PLANTING WITH GATHERING AREAS
- 5 103 AVENUE AXIS / ORIENTATION SPACE
- 6 WATER FEATURE IN PLAZA
- 7 PATIO PLAZA · INTERFACE WITH COMMERCIAL/RETAIL FRONTAGE
- 8 PEDESTRIAN CONNECTION TO 103A AVENUE

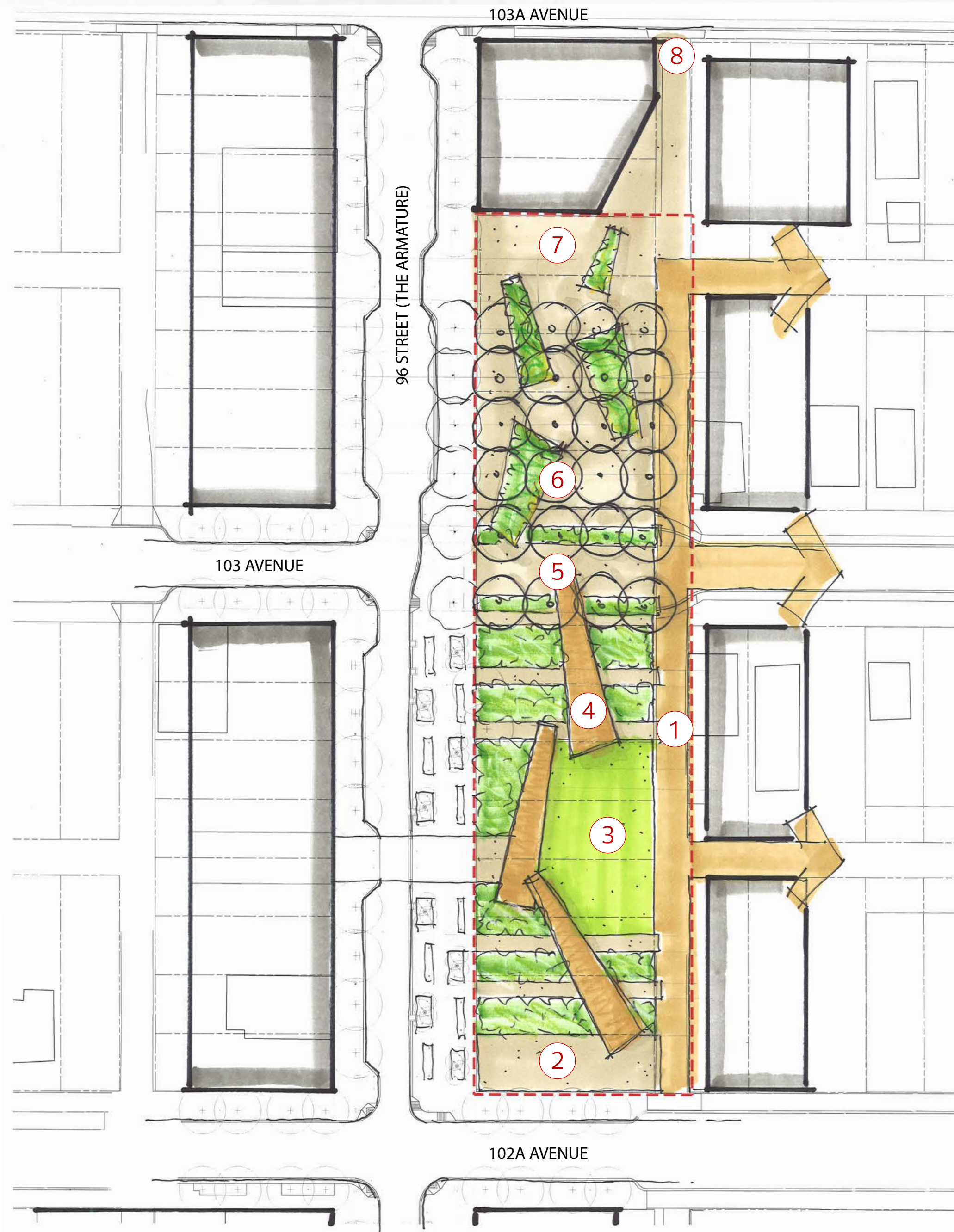
What do you like about the Preliminary Concepts?
What do you dislike about the them? Are there any
operating impacts that we need to be aware of
Is there anything else that we need to consider
prior to moving forward?

Use the post-it notes to share your thoughts here.

PRELIMINARY CONCEPT DIAGRAMS

LANDSCAPE ERODED

In contrast to Eroded Plaza, the Landscape Eroded concept is symbolic of islands of hardscape emerging from the soft and natural surface of the park. Taking cues from the surrounding environment, Landscape Eroded is composed of overlapping layers of materiality, defined spaces, and a multitude of navigational routes.



- 1 VEHICULAR ACCESS TO LIVE/WORK AND RESIDENTIAL FRONTAGES
- 2 ART PLAZA · INTERFACE WITH 102A AVENUE
- 3 LAWN
- 4 PROGRAM SPACES WITH OVERHEAD STRUCTURES
- 5 103 AVENUE AXIS / ORIENTATION SPACE
- 6 PLAZA BOSQUE · PLANTING BEDS WITH GATHERING AREAS
- 7 PATIO PLAZA · INTERFACE WITH COMMERCIAL/RETAIL FRONTAGE
- 8 PEDESTRIAN CONNECTION TO 103A AVENUE

What do you like about the Preliminary Concepts?
What do you dislike about the them? Are there any operating impacts that we need to be aware of
Is there anything else that we need to consider prior to moving forward?

Use the post-it notes to share your thoughts here.

NEXT STEPS & PROJECT SCHEDULE

USING YOUR INPUT

Thank you for attending today's open house! We value your time and contributions to this process.

The input that we receive today will help to refine the preliminary concept design options.

In March, we will come back to stakeholders and the public to present the proposed concept for finalization.

STAY INVOLVED



www.edmonton.ca/kinistinawpark



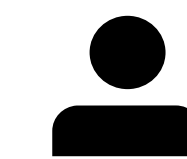
@CityofEdmonton #kinistinawpark



311

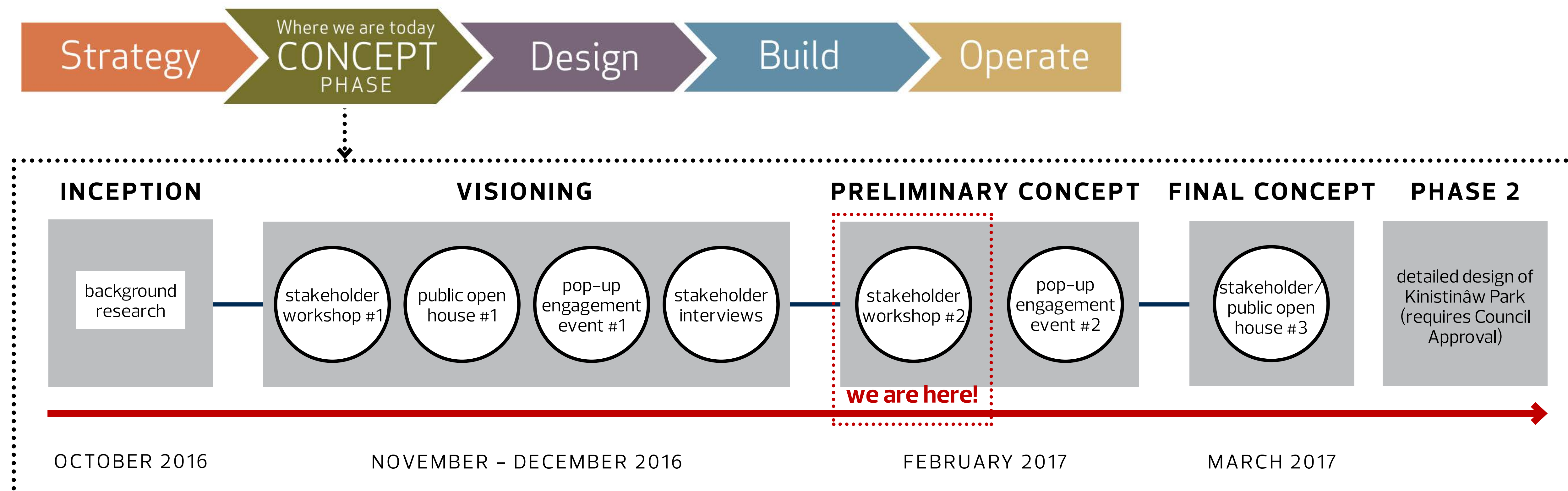


CMSParkAndFacilityDevelopment@edmonton.ca



At upcoming public events!

THE PROCESS



ADDITIONAL IDEAS, COMMENTS, OR CONCERNS

Use the post-it to share your thoughts here.