



City of Edmonton

2012 Employee Engagement and Diversity Survey

Snapshot Report

Section / Sub-Section: n/a

Branch: Corporate Accounting and Treasury

Department: Financial Services and Utilities

Survey Start Date: September 10, 2012

Survey Close Date: September 28, 2012



Snapshot Report

Corporate Accounting and Treasury

HOW TO READ YOUR REPORT

This report is designed to summarize the opinions made by individuals regarding the job and work environment at your organization. The information below describes how to read the results.

Your satisfaction/agreement percentages are graphically depicted as bar charts in % Favourable, % Neutral, and % Unfavourable formats. The box to the right displays how each percentage was calculated. A % Favourable score of 100% means that all employees indicated they were "Very Satisfied" or "Satisfied". While a % Neutral score is technically the middle value on the scale, the score can represent a response that is more unfavourable than it is favourable.

Each organization is different and your survey results should be used as a guide for further investigation. Generally, a % Favourable of 70 or above is considered good, a % Favourable in the 60s is acceptable, and a % Favourable lower than 60 would indicate the need to investigate further.

Interpreting "Neutral" scores: It is a common temptation to view the neutral scores as "mildly positive" or "on the fence" and to combine neutral with positive scores. TalentMap's experience, corroborated with academic and industry research, indicates that neutral scores should be interpreted as "mildly negative" given the positive bias of the survey instrument. Respondents who select "neither agree nor disagree" to a particular question are not in agreement and are therefore sending a mildly negative message.

This report displays the survey items in the order they appear in the questionnaire. Throughout the report, you will notice a letter indicating that the item was used in one of the Key Dimension calculations presented on slide 3. This letter will appear beside the questionnaire item in the report. An (E) indicates that the item is part of the Engagement dimension; a (C) indicates that the item is part of the Culture dimension; and a (W) indicates that the item is part of the Workplace dimension.

Branch 2012: refers to your 2012 branch's % Favourable score.

Group 2010: refers to your 2010 group's % Favourable score.

Dept 2012: refers to your department's 2012 overall % Favourable score.

CoE 2012: refers to the overall score for the City of Edmonton.

% Unfavourable: represents the respondents who chose "Very Dissatisfied/Dissatisfied" or "Strongly Disagree/Disagree".

% Neutral: represents the respondents who chose "Neither Agree nor Disagree" or "Neutral".

% Favourable: represents the respondents who chose "Very Satisfied/Satisfied" or "Strongly Agree/Agree".

Invited: 101

Responded: 84

Response Rate 2012: 83%

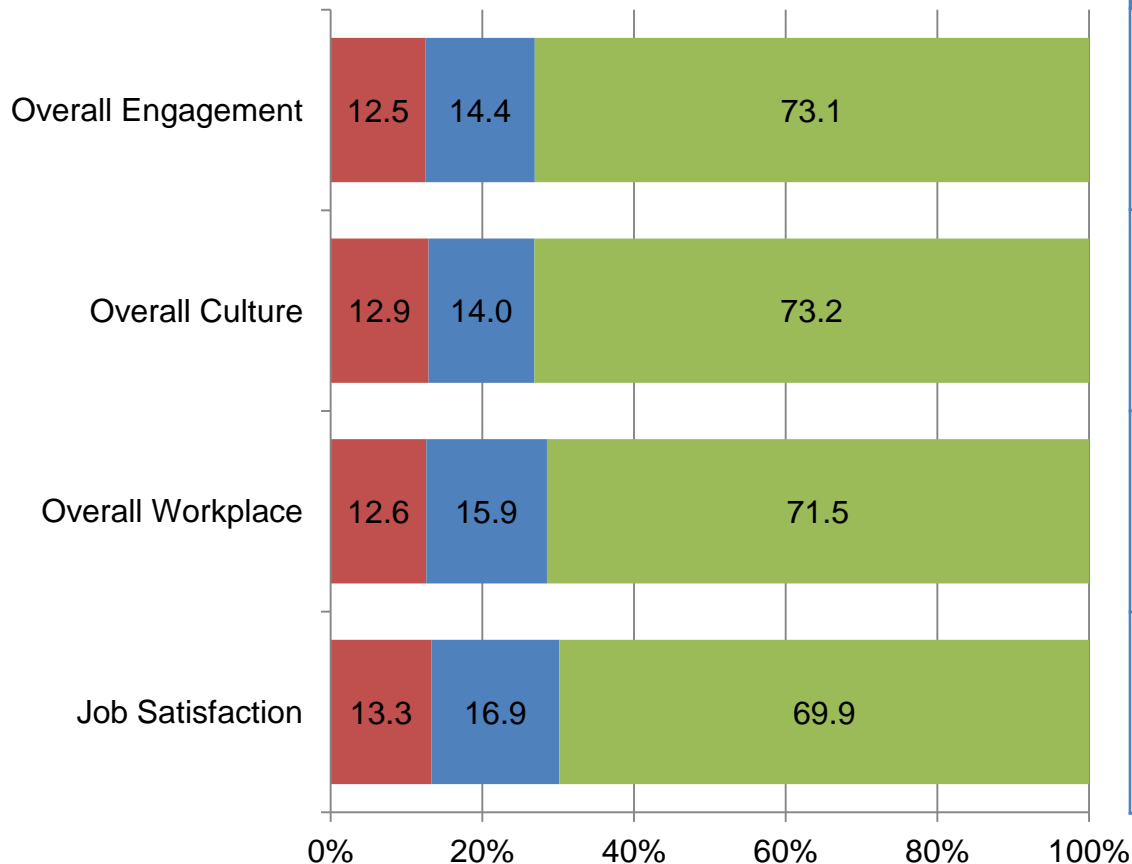
Response Rate 2010: n/a

Snapshot Report

Corporate Accounting and Treasury

Key Dimension Overview

■ Unfavourable ■ Neutral ■ Favourable



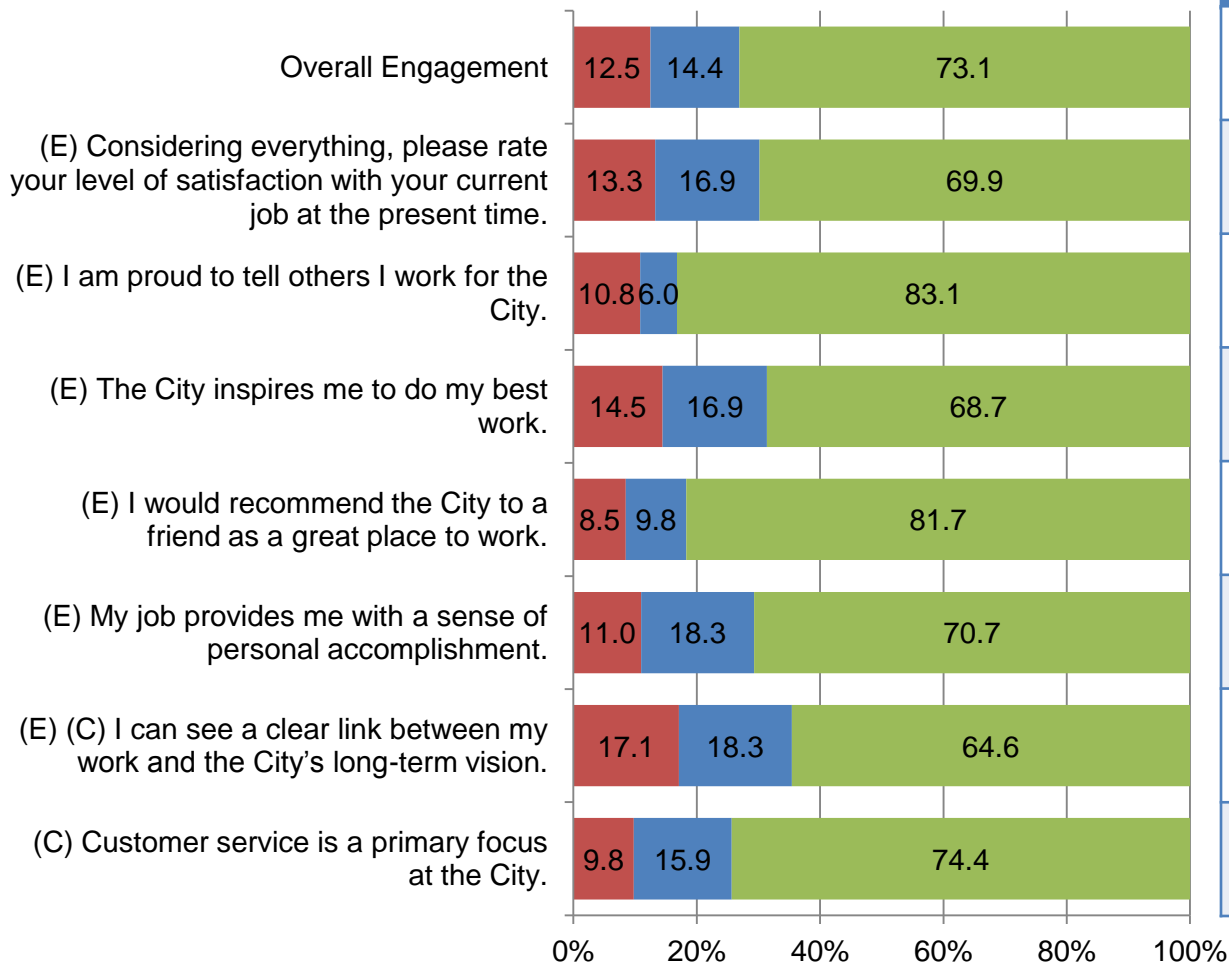
Branch 2012	Group 2010	Dept 2012	CoE 2012
73.1	n/a	68.8	68.4
73.2	n/a	66.7	67.3
71.5	n/a	67.1	67.7
69.9	n/a	65.9	67.5

Snapshot Report

Corporate Accounting and Treasury

Engagement

■ Unfavourable ■ Neutral ■ Favourable



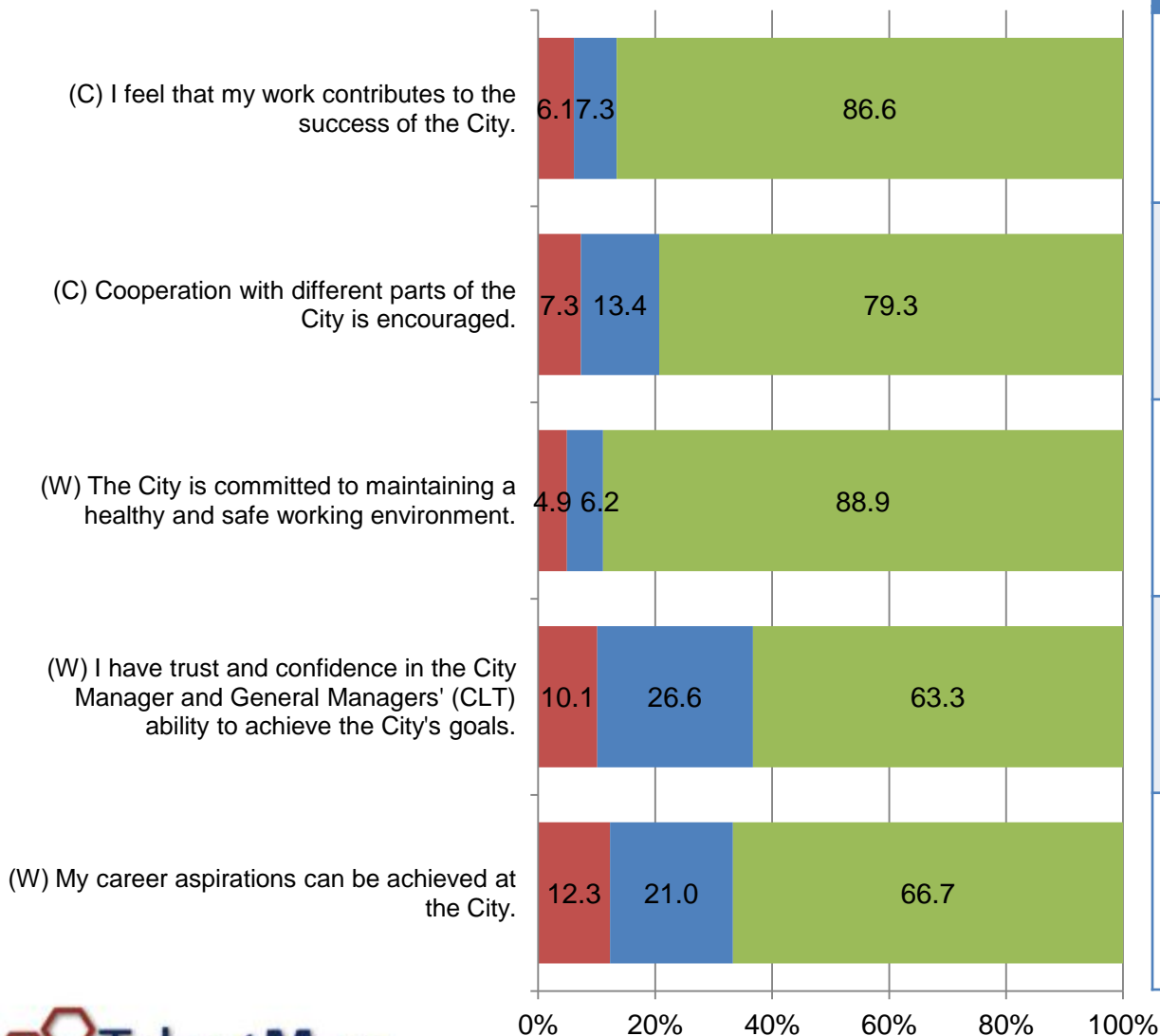
Branch 2012	Group 2010	Dept 2012	CoE 2012
73.1	n/a	68.8	68.4
69.9	n/a	65.9	67.5
83.1	n/a	78.6	77.5
68.7	n/a	60.1	59.5
81.7	n/a	76.2	75.4
70.7	n/a	68.9	71.1
64.6	n/a	62.8	59.2
74.4	n/a	78.7	75.2

Snapshot Report

Corporate Accounting and Treasury

Understanding of the City

■ Unfavourable ■ Neutral ■ Favourable



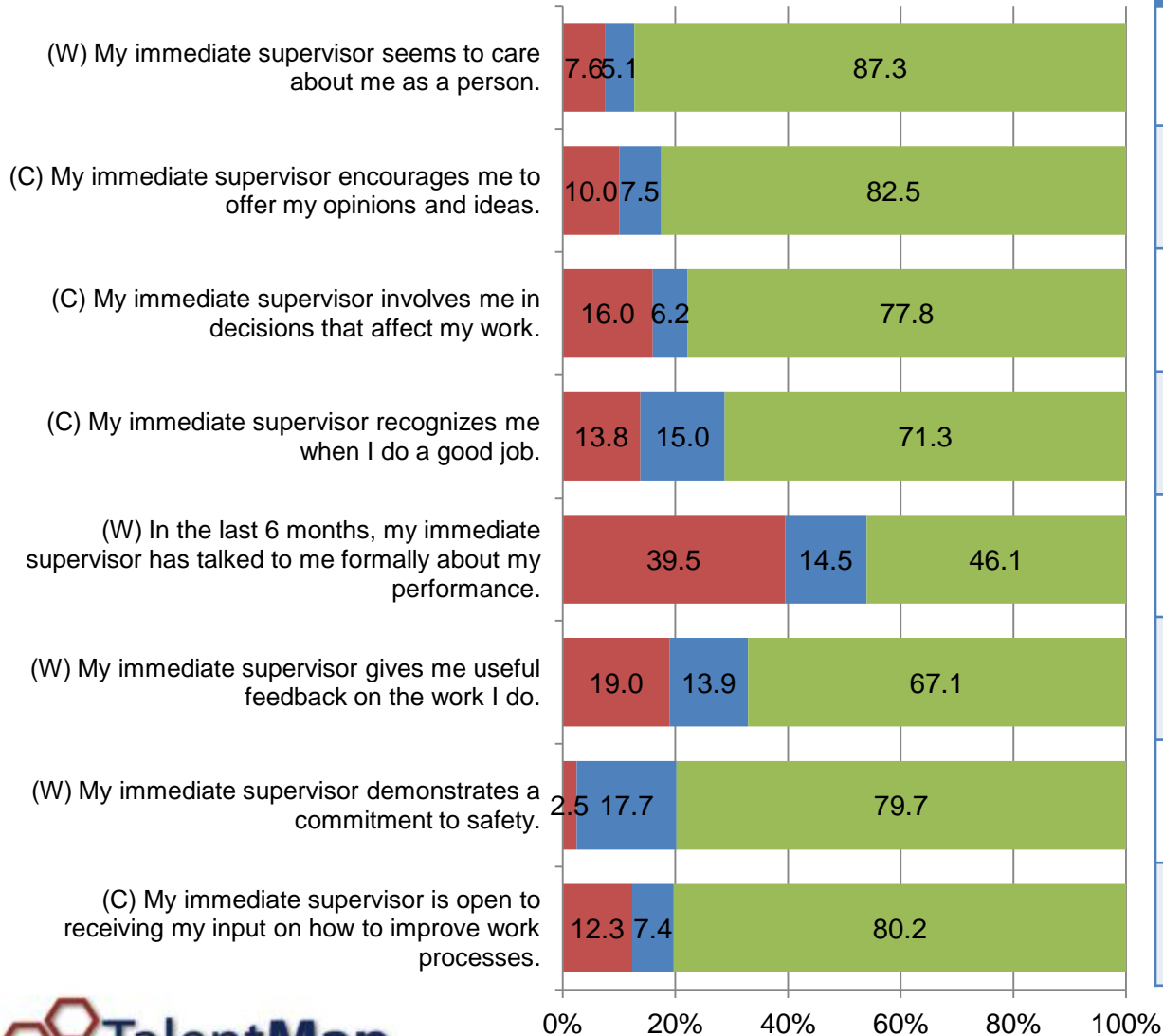
Branch 2012	Group 2010	Dept 2012	CoE 2012
86.6	n/a	85.0	85.0
79.3	n/a	66.1	67.6
88.9	n/a	80.3	81.9
63.3	n/a	62.2	58.8
66.7	n/a	61.7	59.5

Snapshot Report

Corporate Accounting and Treasury

Immediate Supervisor

■ Unfavourable ■ Neutral ■ Favourable



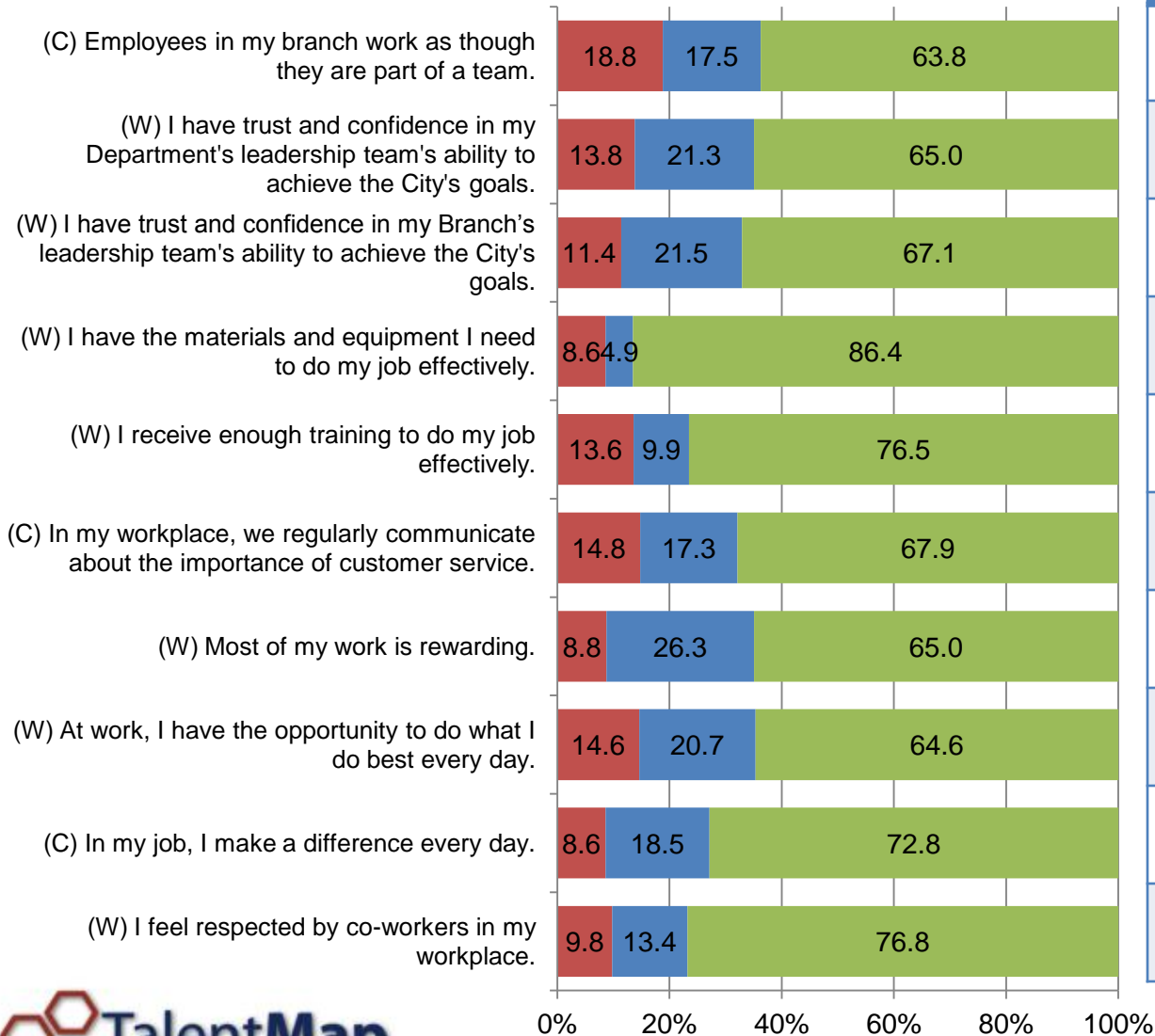
Branch 2012	Group 2010	Dept 2012	CoE 2012
87.3	n/a	78.7	78.0
82.5	n/a	73.5	75.1
77.8	n/a	68.9	68.4
71.3	n/a	67.5	70.6
46.1	n/a	49.9	55.2
67.1	n/a	60.4	63.3
79.7	n/a	77.6	78.2
80.2	n/a	72.0	71.6

Snapshot Report

Corporate Accounting and Treasury

Workplace and Branch

■ Unfavourable ■ Neutral ■ Favourable



Branch 2012	Group 2010	Dept 2012	CoE 2012
63.8	n/a	60.7	62.3
65.0	n/a	59.5	59.4
67.1	n/a	59.3	60.5
86.4	n/a	76.1	74.0
76.5	n/a	71.2	69.3
67.9	n/a	62.2	62.6
65.0	n/a	62.9	66.9
64.6	n/a	63.2	66.1
72.8	n/a	65.1	69.0
76.8	n/a	76.3	76.5

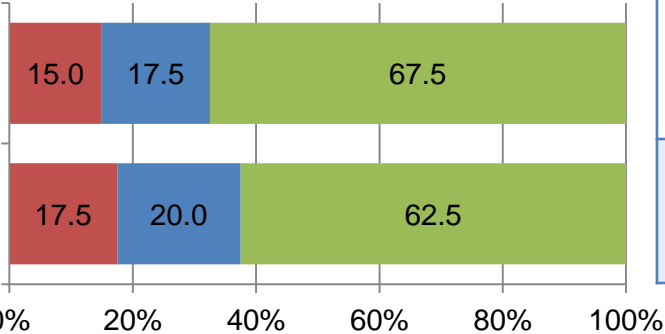
Snapshot Report

Corporate Accounting and Treasury

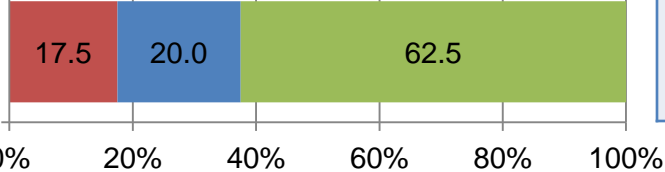
Communication

■ Unfavourable ■ Neutral ■ Favourable

(C) In general, information in the City is communicated well.



(C) In my branch, information is widely shared so that everyone can get the required information when it's needed.

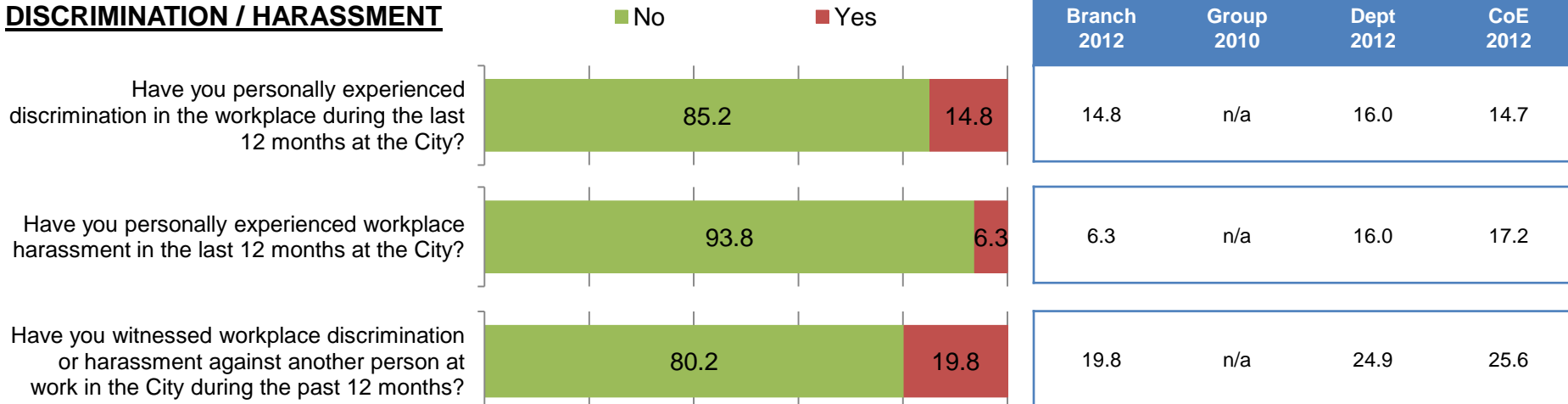


Branch 2012	Group 2010	Dept 2012	CoE 2012
67.5	n/a	53.5	54.2
62.5	n/a	50.6	53.8

Snapshot Report

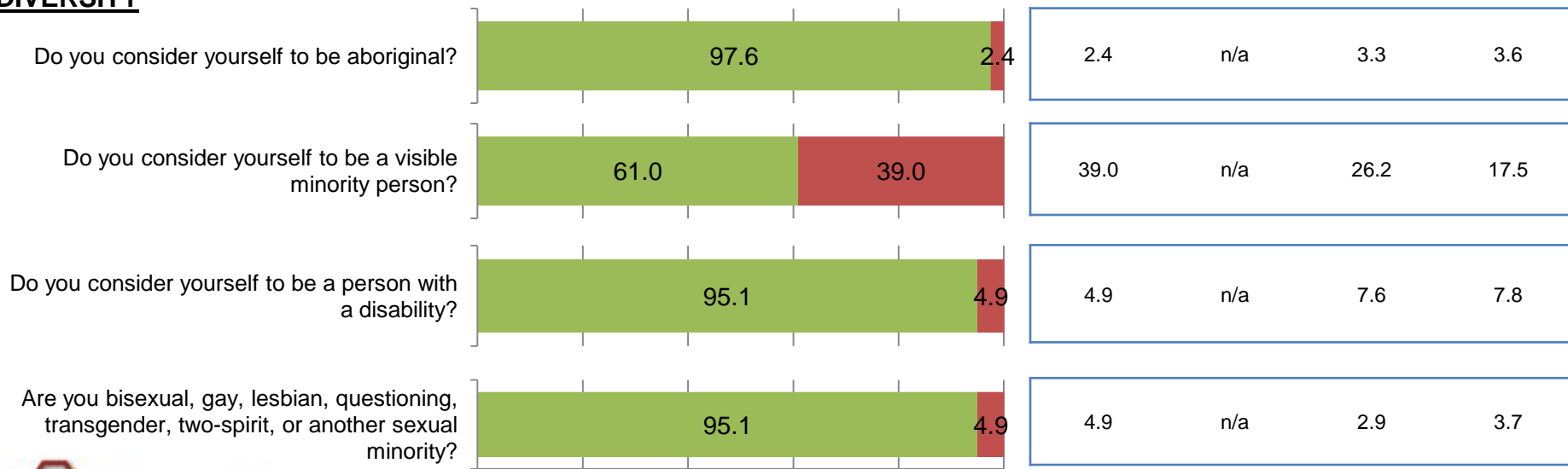
Corporate Accounting and Treasury

DISCRIMINATION / HARASSMENT



For the Discrimination / Harassment section, % No represents a favourable score.

DIVERSITY



0% 20% 40% 60% 80% 100%

All table numbers represent % Yes.