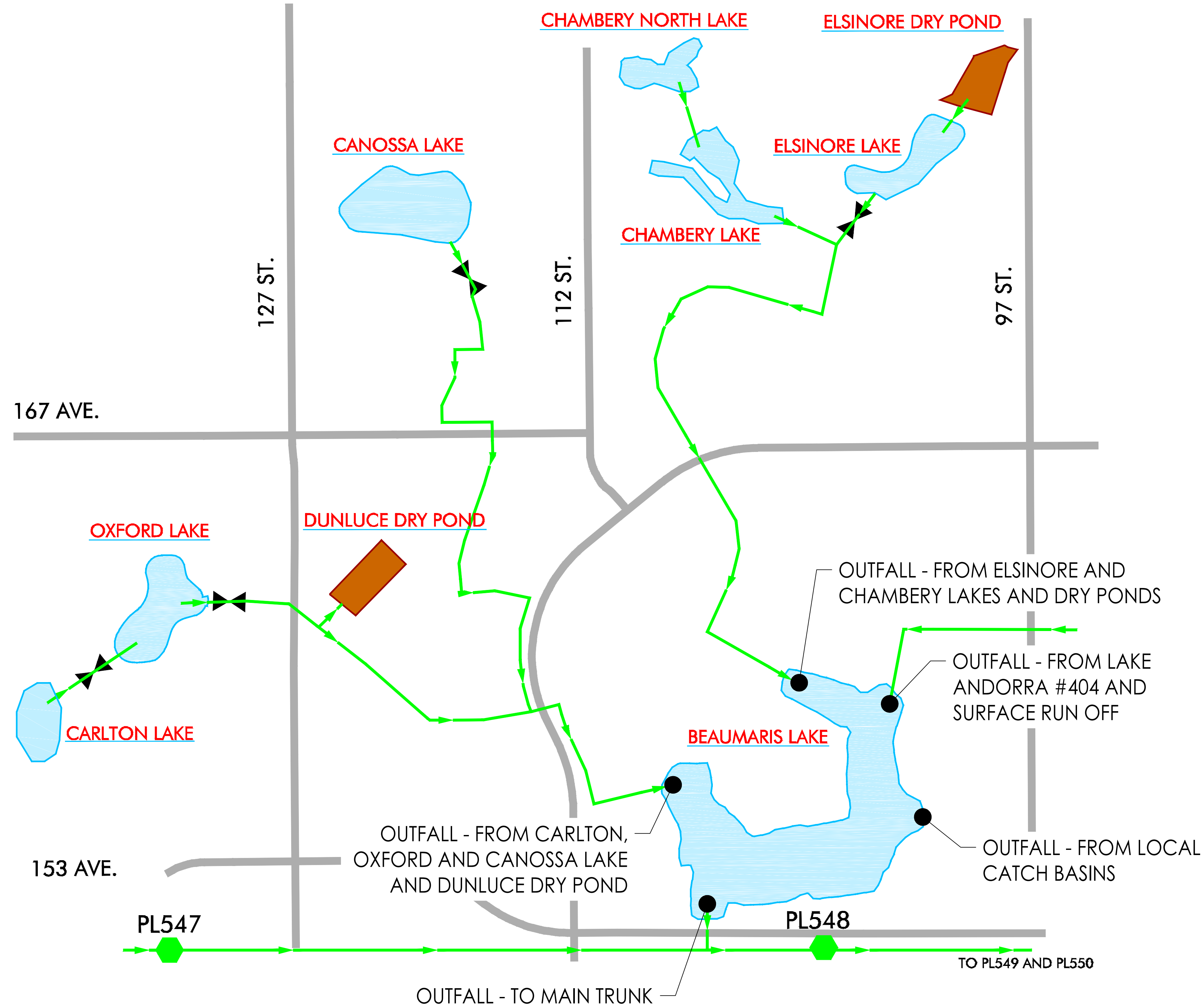


\\\\cd1001-c200\\shared_projects\\110117043\\drafting\\figures\\current\\Hydraulics\\fig_x.dwg
2017/11/20 1:50 PM By: Sumner, Paul



10160 - 112 Street
Edmonton AB
www.stantec.com

Legend

- Main Roadway
- Storm Sewer

Scale

Source: "527-Beaumaris Lake 378188.pdf".
Stormwater Management Facilities Beaumaris
Lake, 10804 - 153 Avenue, Drainage Structure
Operation Description, City of Edmonton Asset
Management & Public Works Drainage Services.

Client/Project



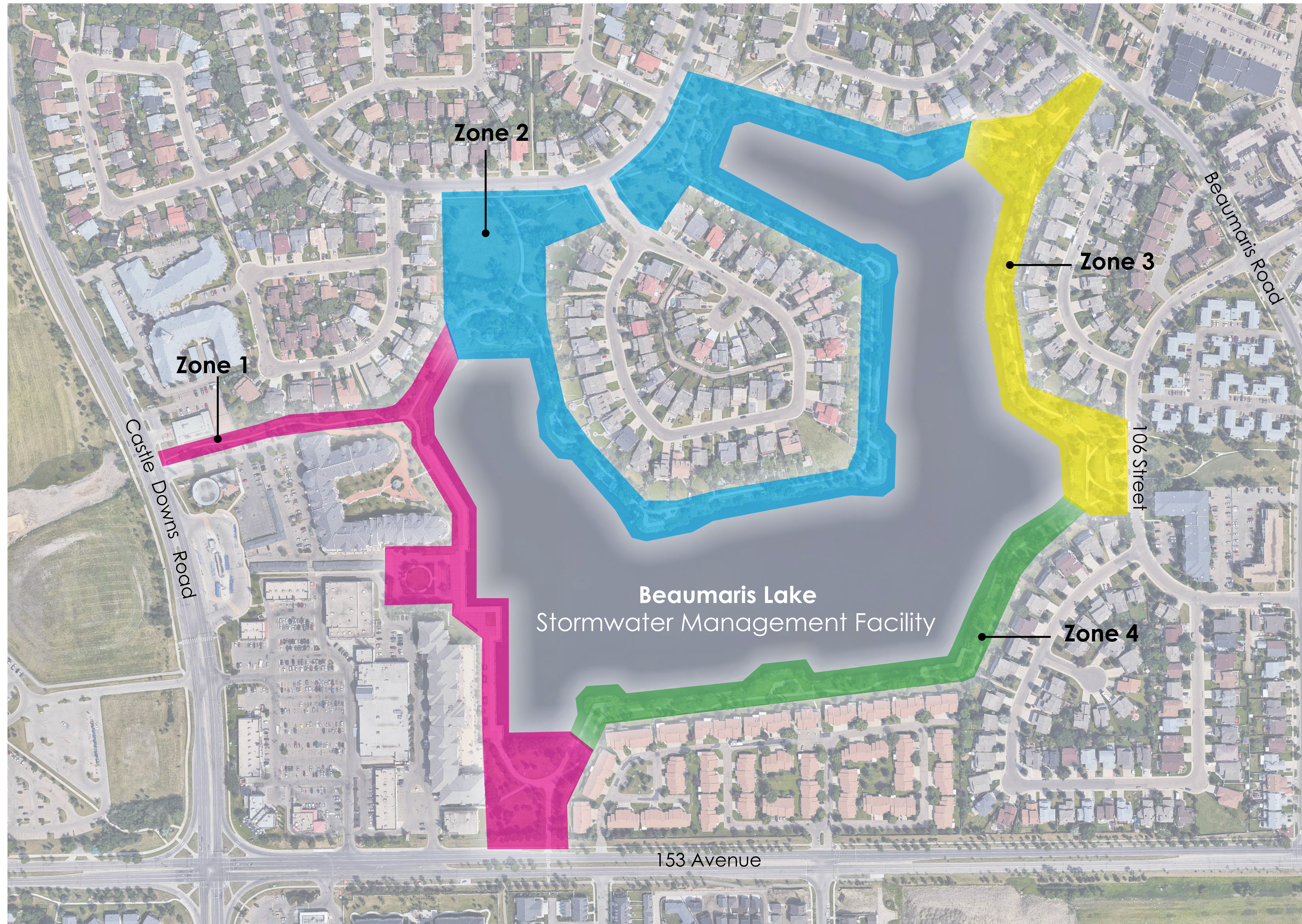
Beaumaris Lake Condition Assessment
and Rehabilitation Plan

Figure No.

X-X

Title

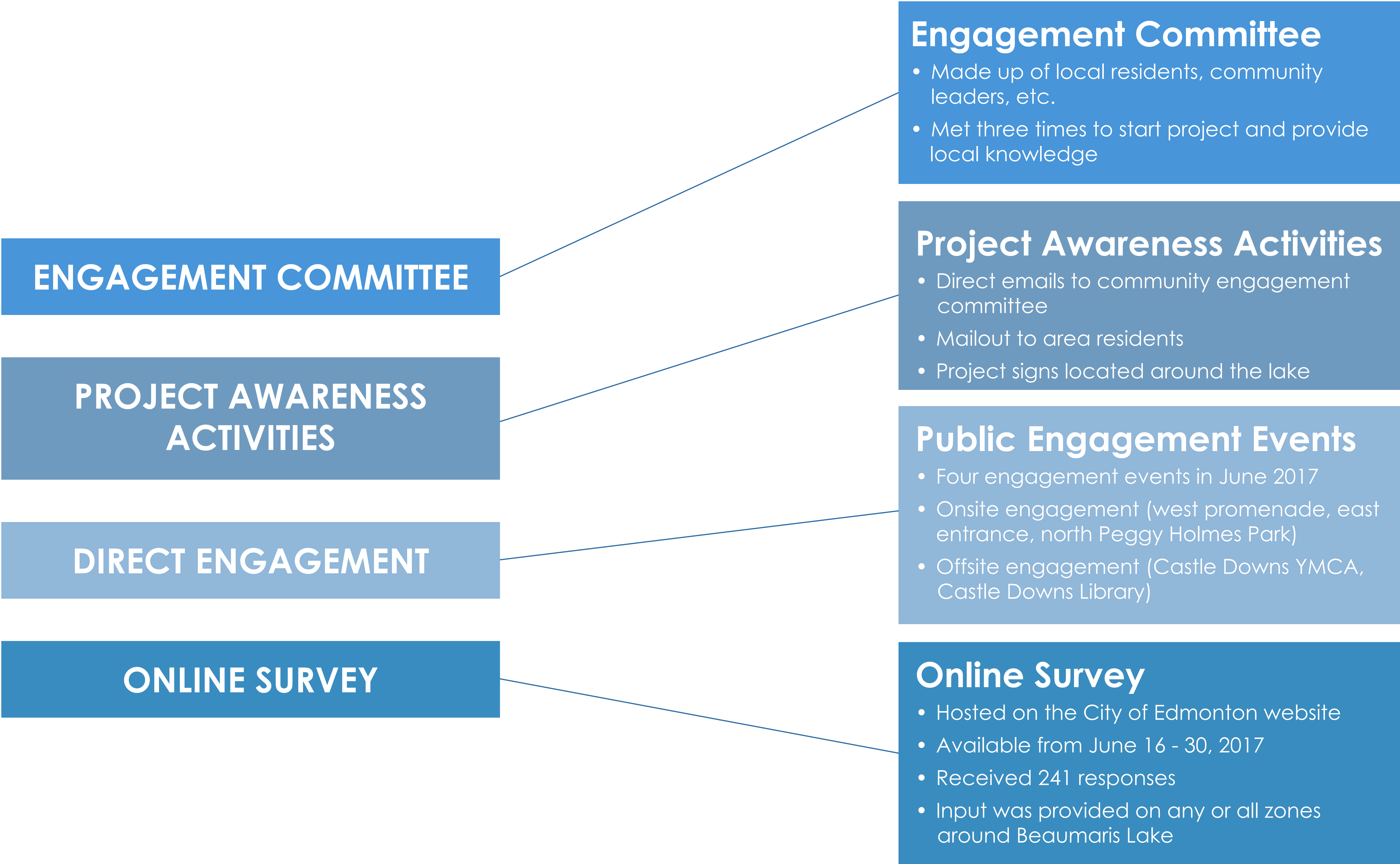
Northwest Edmonton Lake District,
Overall Drainage Interconnections



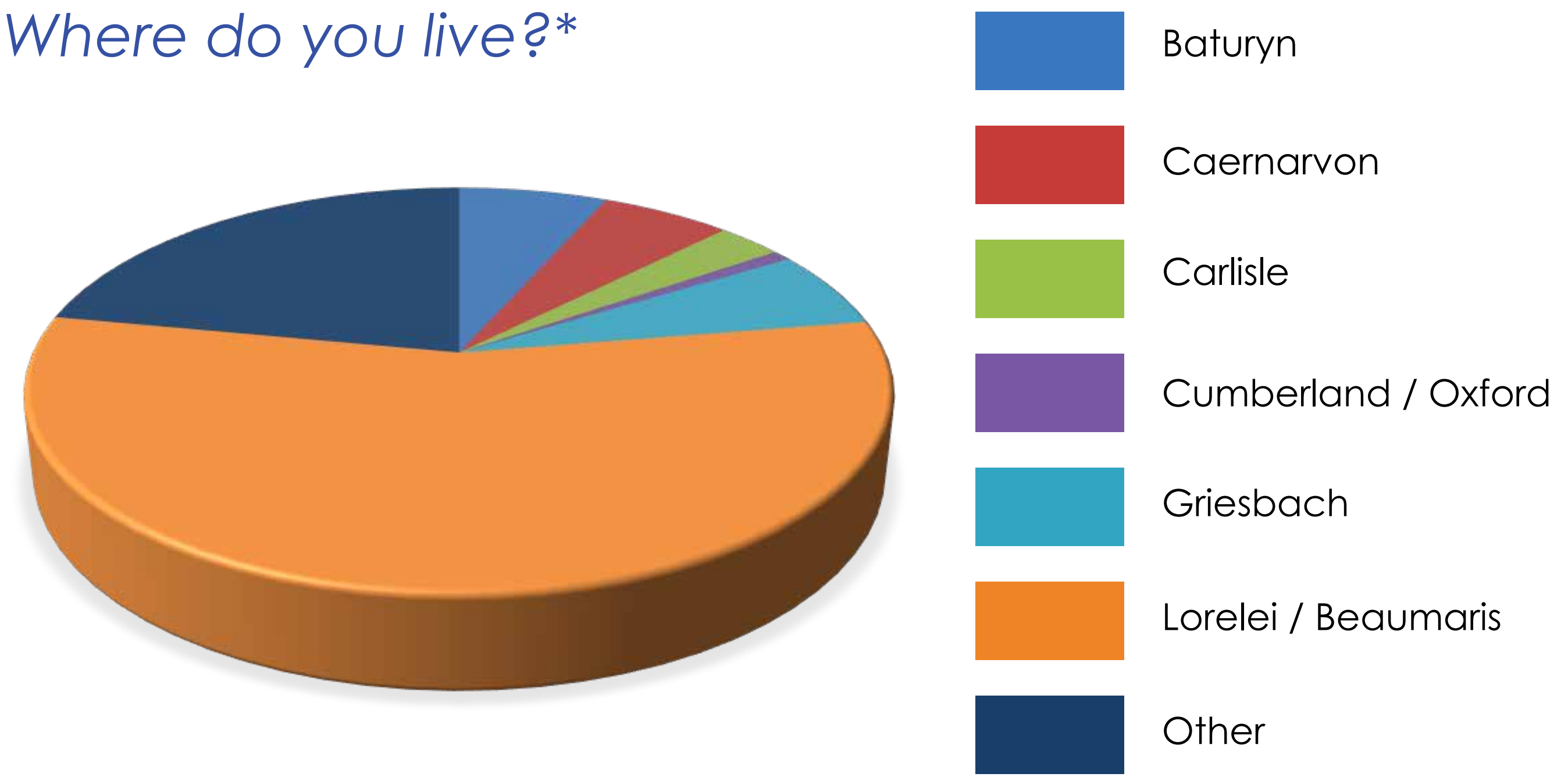
Project Focus

- Development of Functional Program Concept
- Schematic Design
- Landscape & Community Amenities Only
- Address Safety Concerns
- Guide Rehabilitation

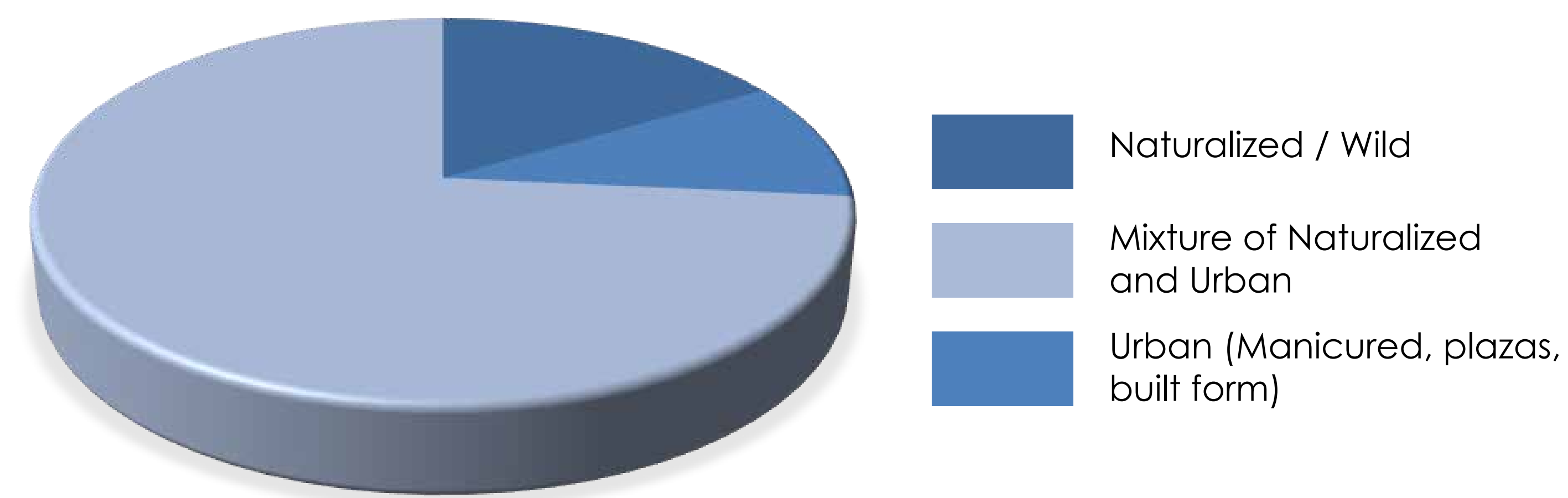




Where do you live?*

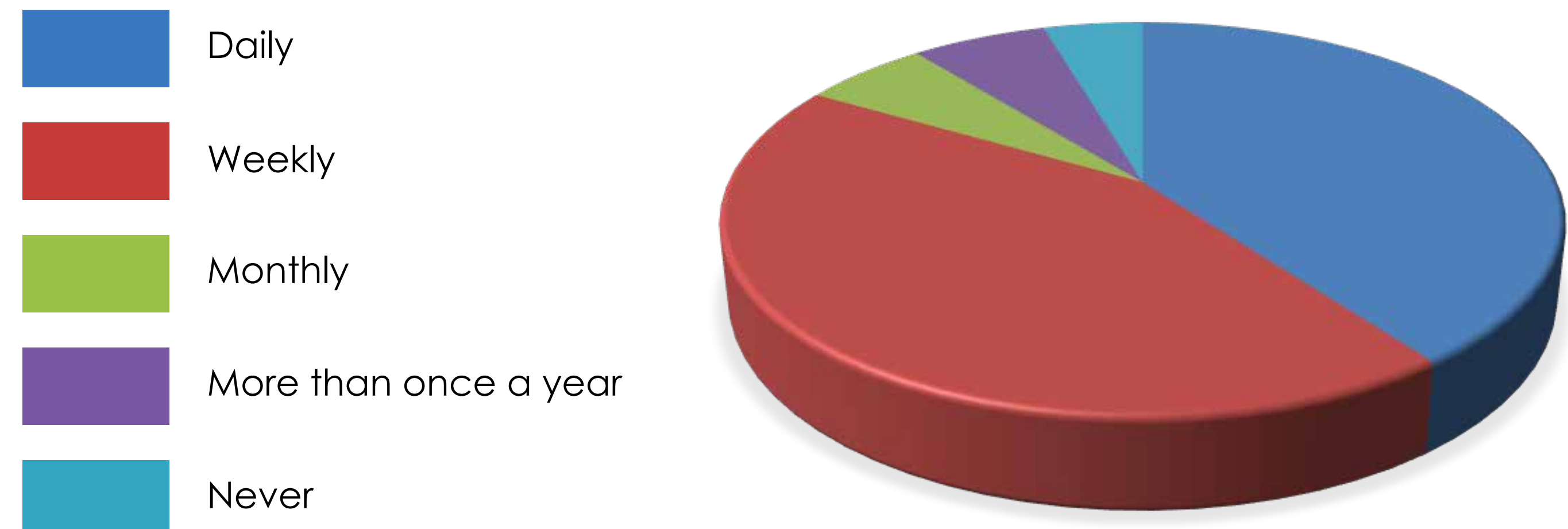


What is your preferred “look” for the open space at Beaumaris Lake?

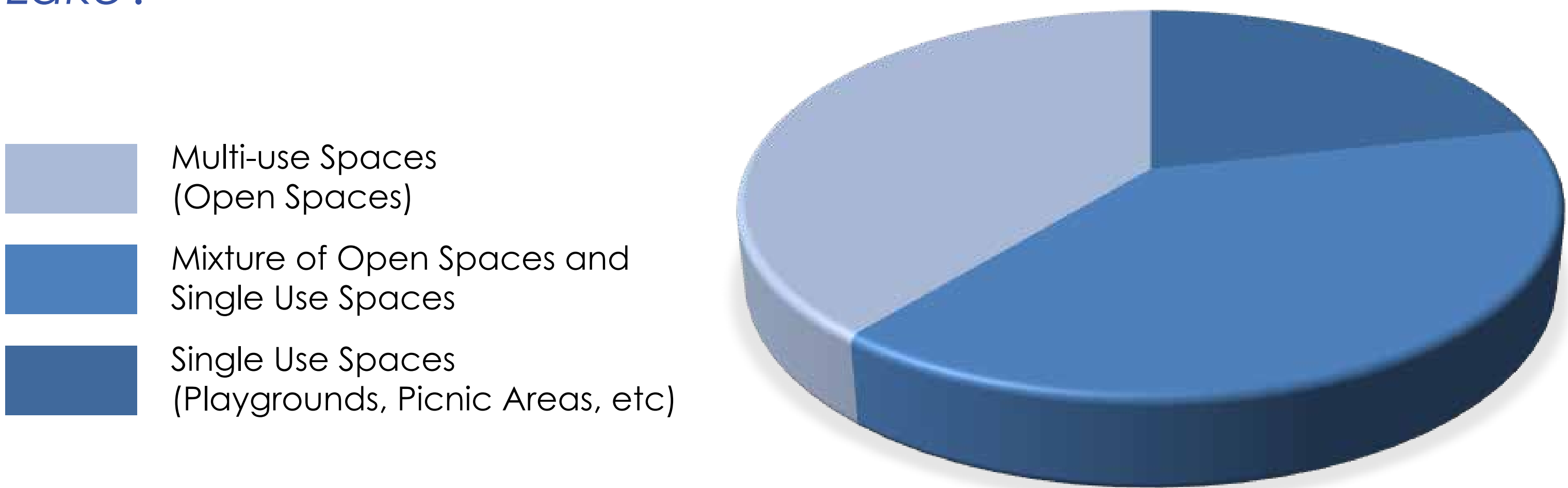


Results: Majority of respondents like the way the open space looks today (a mixture of naturalized space and urban space), and would like to see this in the open space improvements

How often do you use the open space around Beaumaris Lake?*



What are your preferred uses for the open space at Beaumaris Lake?



Results: The responses were split between the preference for multi-use open spaces, single-use spaces and a mixture of open space. The improvements will focus on providing open spaces, as well as increase the number seating and table spaces.

* Feedback is from online survey only
(241 responses)



Preservation and Enhancement of
Existing Natural Setting



Inclusion of ***Interpretive Signage***



Improved ***Safety*** and ***Security***



Additional ***Seating*** and ***Rest Areas***



Desire for ***Drinking Fountains***
and ***Washroom Facilities***

Vision Statement

“To provide a high quality, natural environment that supports healthy living by offering opportunities for: tranquility and rest, wildlife and stormwater management education, community gathering, and physical activity.”

Project Values

- Preservation and Enhancement of Mature Landscape and Theme
- Peacefulness and Tranquility
- Safety and Security
- Community Gathering
- Education, Wildlife Preservation and Connecting Children to Nature
- Exercise and Physical Activity

Project Objectives

- Improve User Experience at the Lake
- Improve Views of the Lake
- Retain and Enhance Existing Landscape
- Improve Trails and Seating Network
- Provide Connection between the Lake and the Library
- Create Gathering Spaces
- Provide Education on Rain Gardens and Innovative Storm Water Management
- Provide Support Signage for Exercise Loop

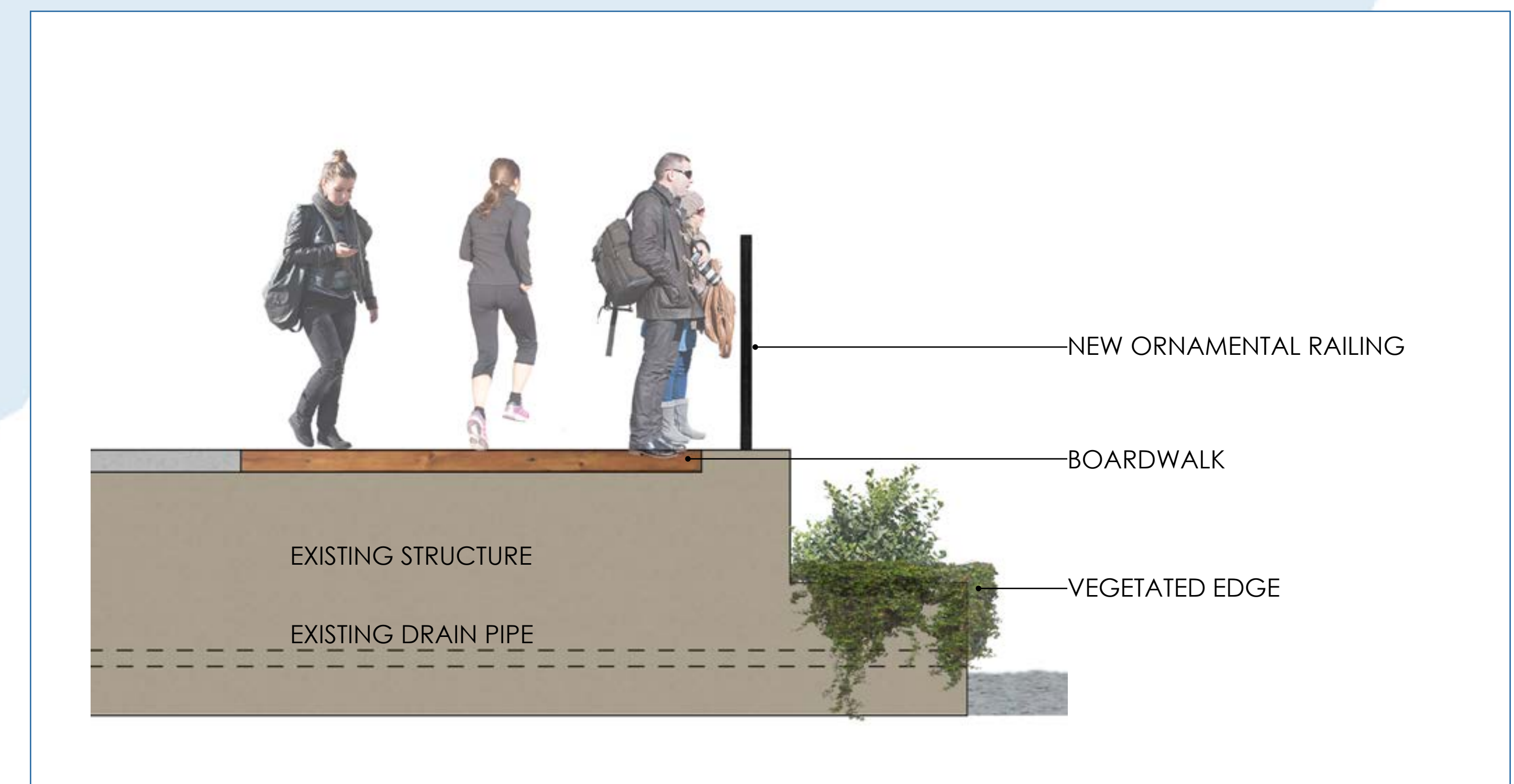


KEY FEATURES

- New railing improves views to the lake
- Variety of seating types and opportunities
- Planted wall to soften lake edge
- Interpretive signage for educational opportunities
- Site Lighting



Key Plan





Graphic Rendering of Promenade

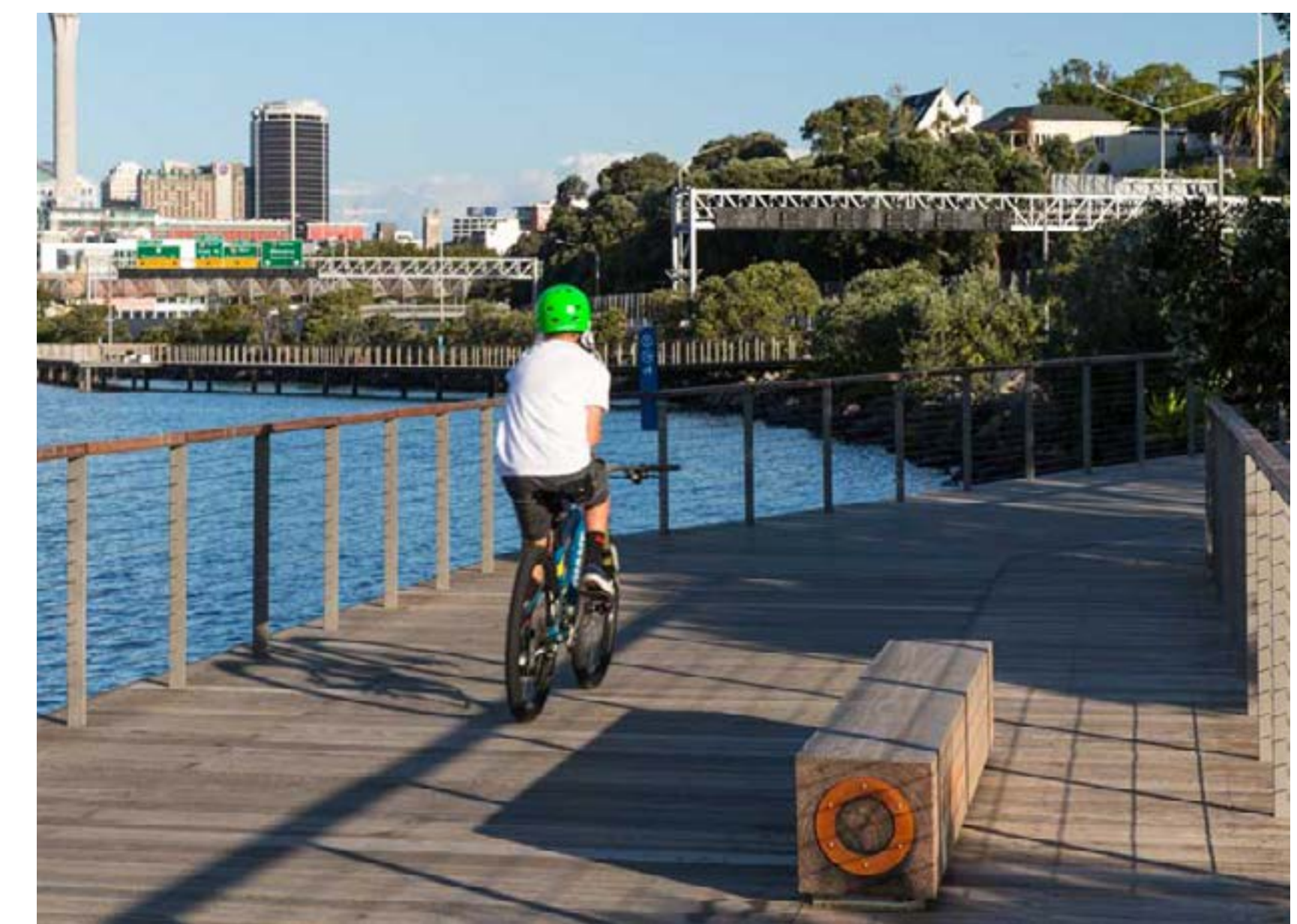
INSPIRATION IMAGES



Walls and Seating

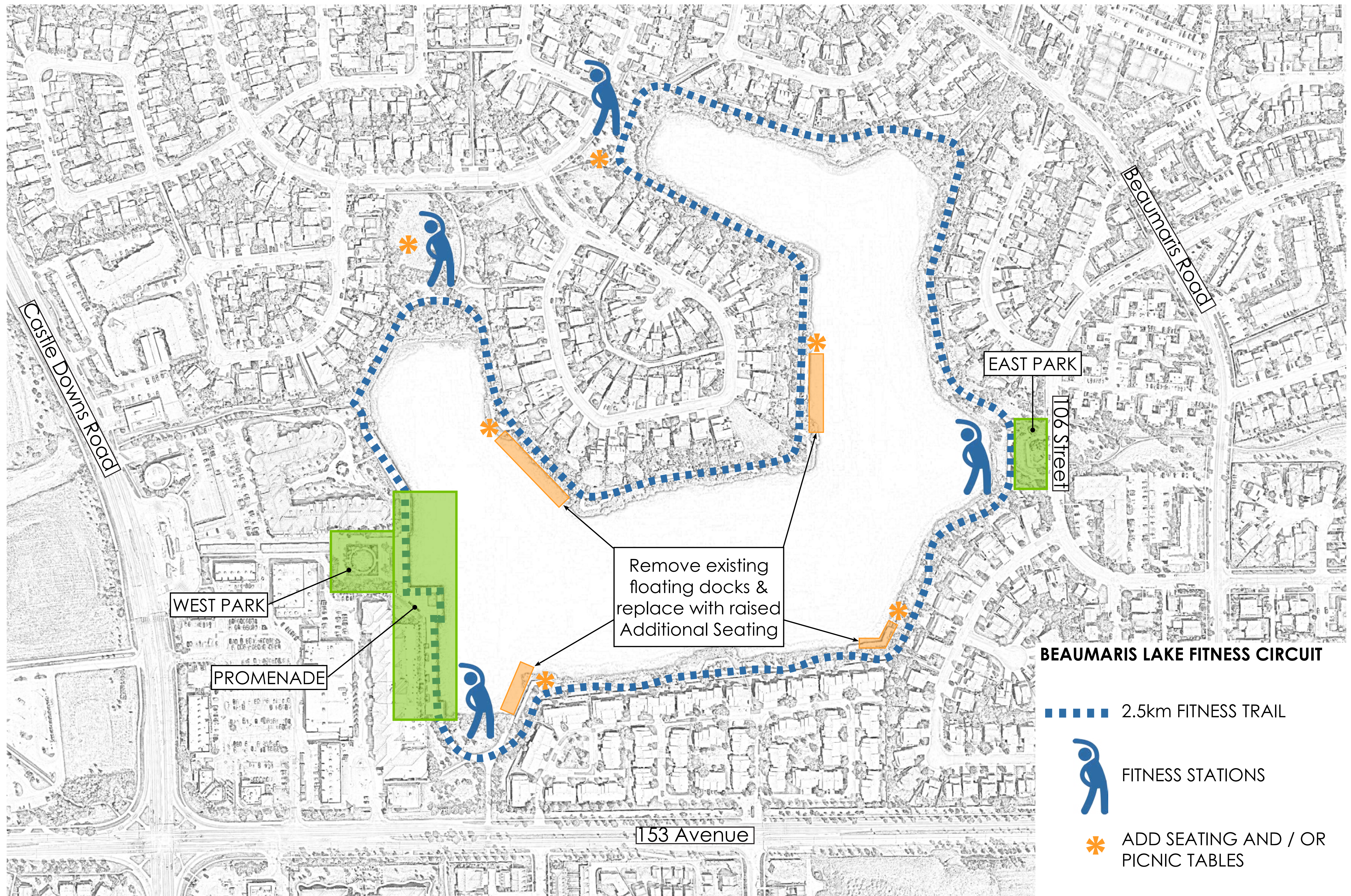


Trailing Plant Material



Boardwalk Promenade

BEAUMARIS LAKE OPEN SPACE | PROMENADE CONCEPT



BEAUMARIS LAKE OPEN SPACE | OVERALL LAKE CONCEPT





Fitness Trail Exercises



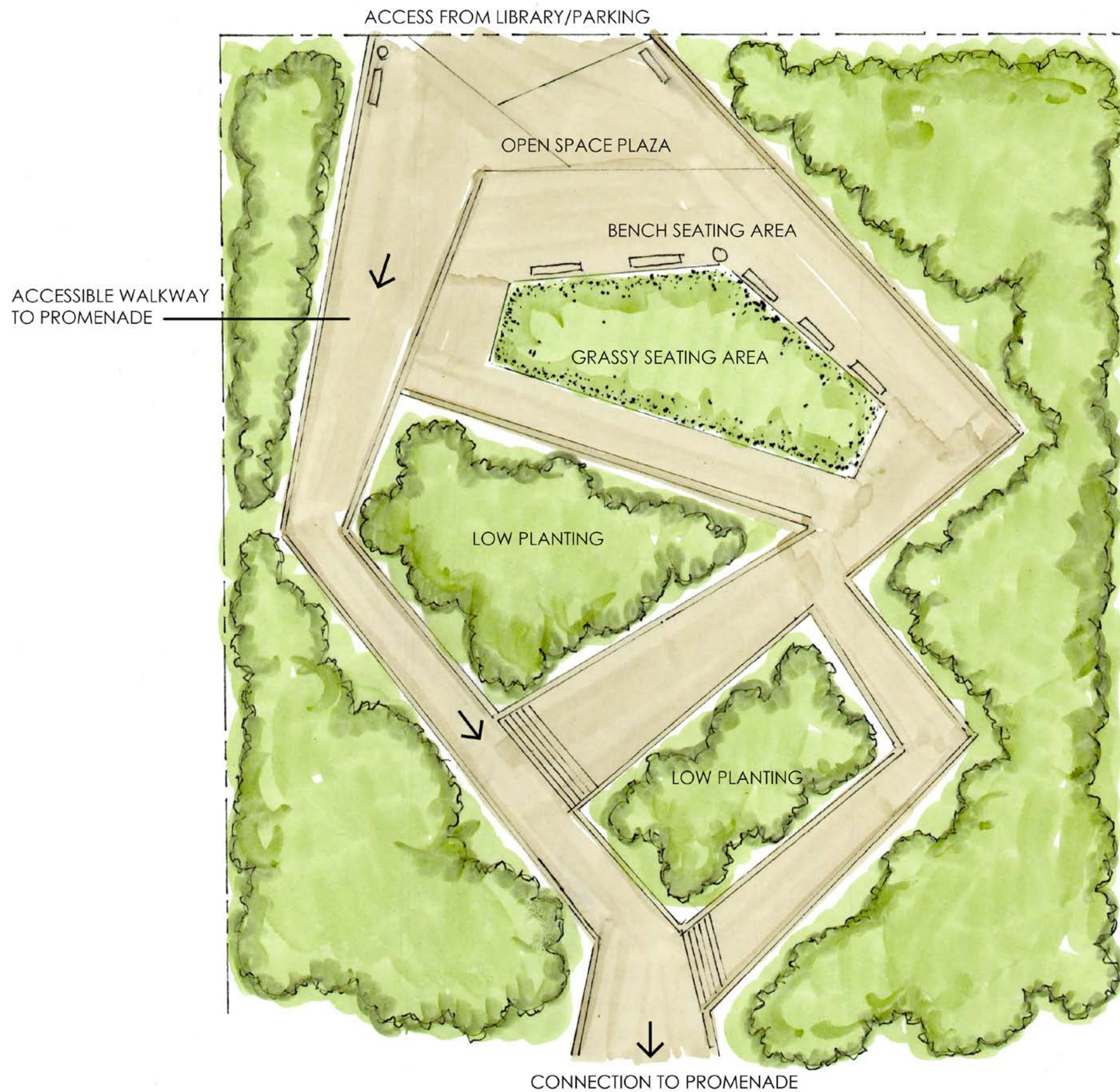
Fitness Trail Signage



Outdoor Fitness Classes



BEAUMARIS LAKE OPEN SPACE | OVERALL LAKE CONCEPT - DOCK REPLACEMENT



KEY FEATURES

- Upper Plaza at grade with existing parking
- Graded paths down to lake to improve accessibility - minimal stairs
- Open multi-use areas
- Low Maintenance
- Site Lighting



Key Plan

INSPIRATION IMAGES

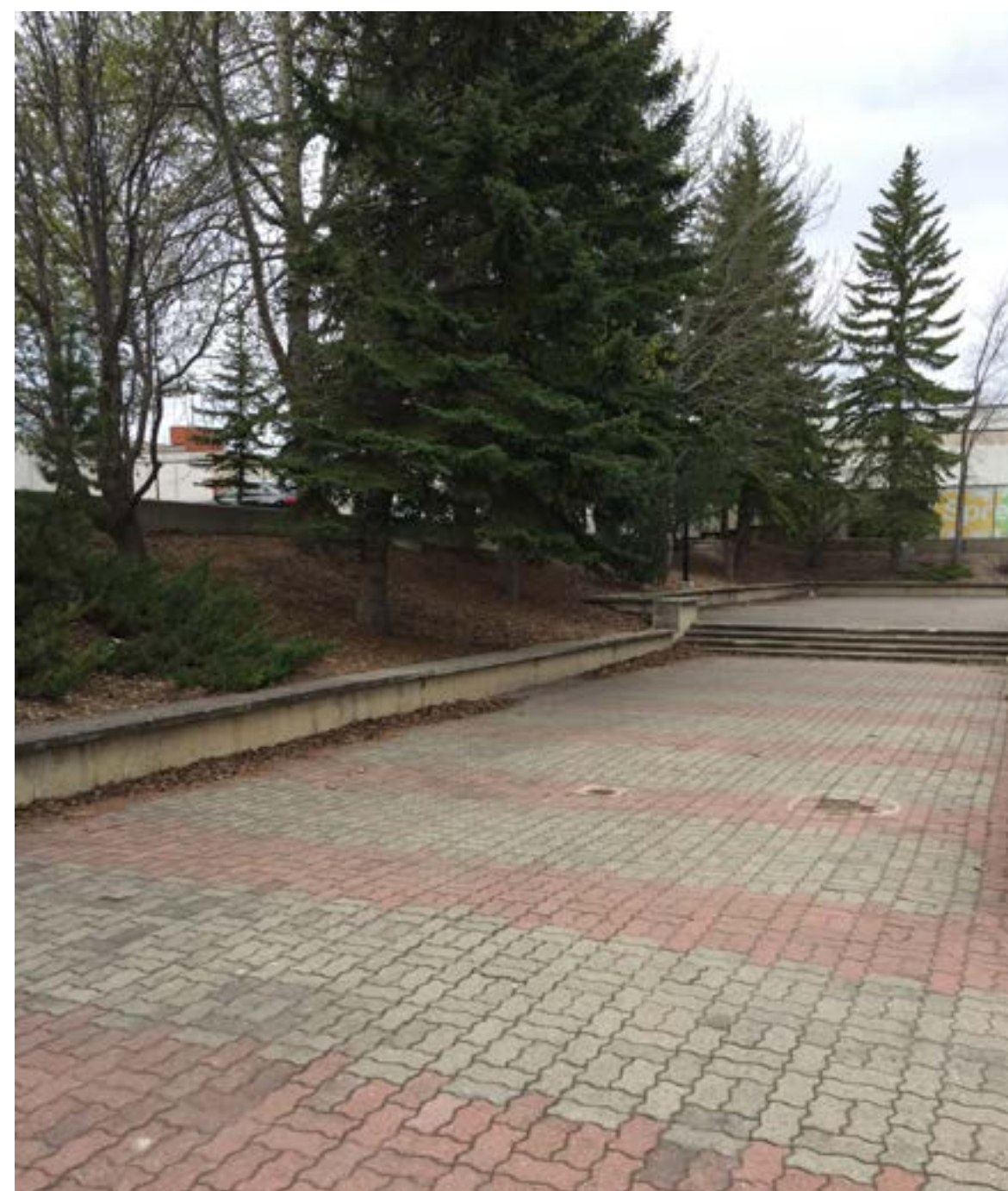


Low Plant Material



Grassy Seating Area

Bench Seating



EXISTING SITE CONDITIONS

BEAUMARIS LAKE OPEN SPACE | WEST PARK CONCEPT - OPTION 1



ACCESS TO LIBRARY / PARKING



KEY FEATURES

- Upper seating area with multiple access angles
- Gentle switchback path through low / no maintenance plantings to improve accessibility
- Stormwater Management Education Zone
- Site Lighting



Key Plan

INSPIRATION IMAGES



Rain Garden Stormwater Education Zone



Water Feature



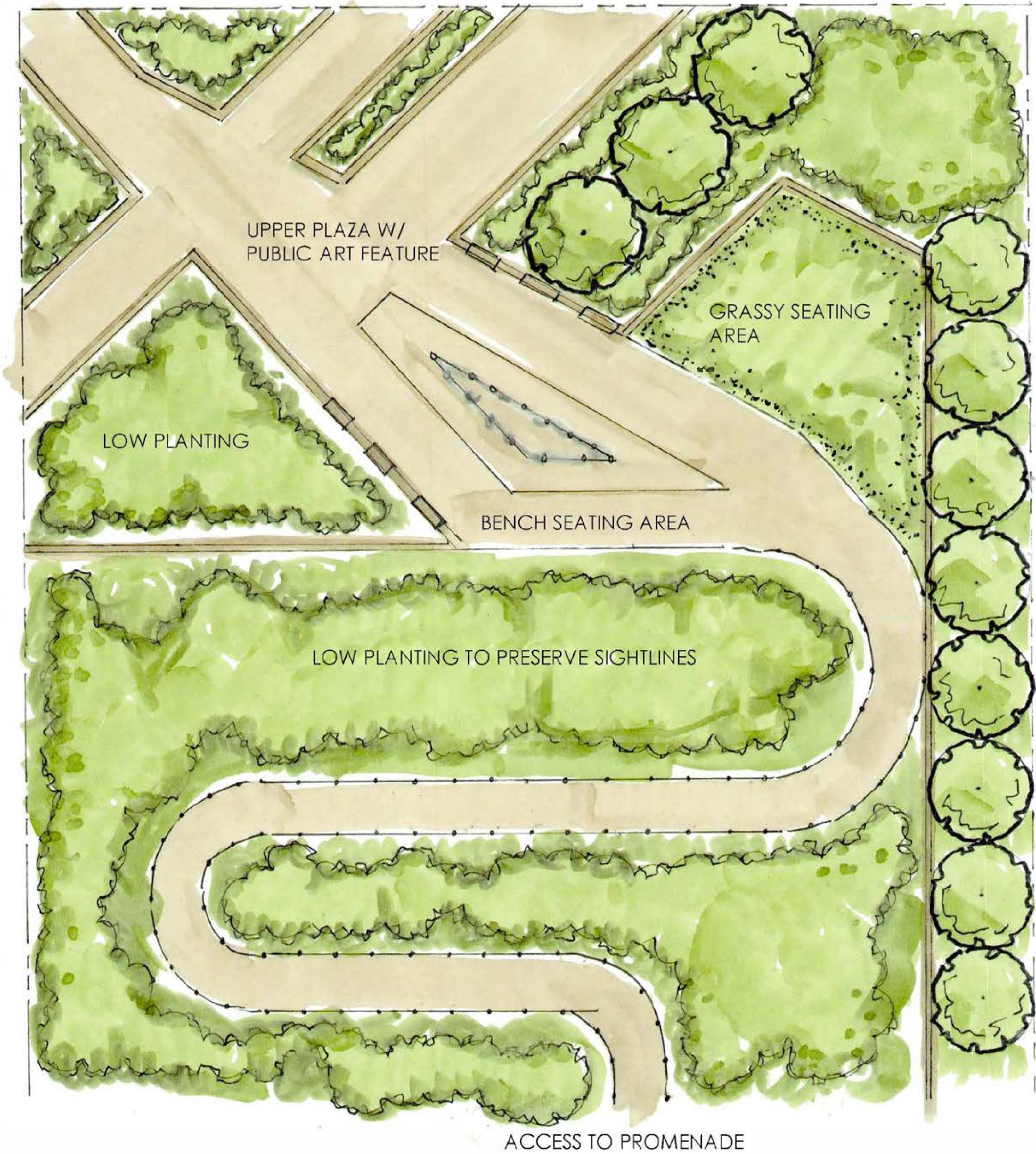


EXISTING SITE CONDITIONS

BEAUMARIS LAKE OPEN SPACE | WEST PARK CONCEPT - OPTION 2



ACCESS TO LIBRARY/PARKING



KEY FEATURES

- Large upper terrace with multiple access angles
- Large multi-use green space
- Interactive public art piece
- Gentle switchback path through low / no maintenance plantings to improve accessibility
- Site Lighting



Key Plan

INSPIRATION IMAGES



Multi-Use Green Space



Seating in Upper Plaza



Low / No Maintenance Plantings



Public Art





EXISTING SITE CONDITIONS

BEAUMARIS LAKE OPEN SPACE | WEST PARK CONCEPT - OPTION 3





Key Plan

KEY FEATURES

- Large open grass space adjacent to existing trail
- Terraced planting beds with low, trailing planting
- Upper plaza are with open views and seating
- Site Lighting

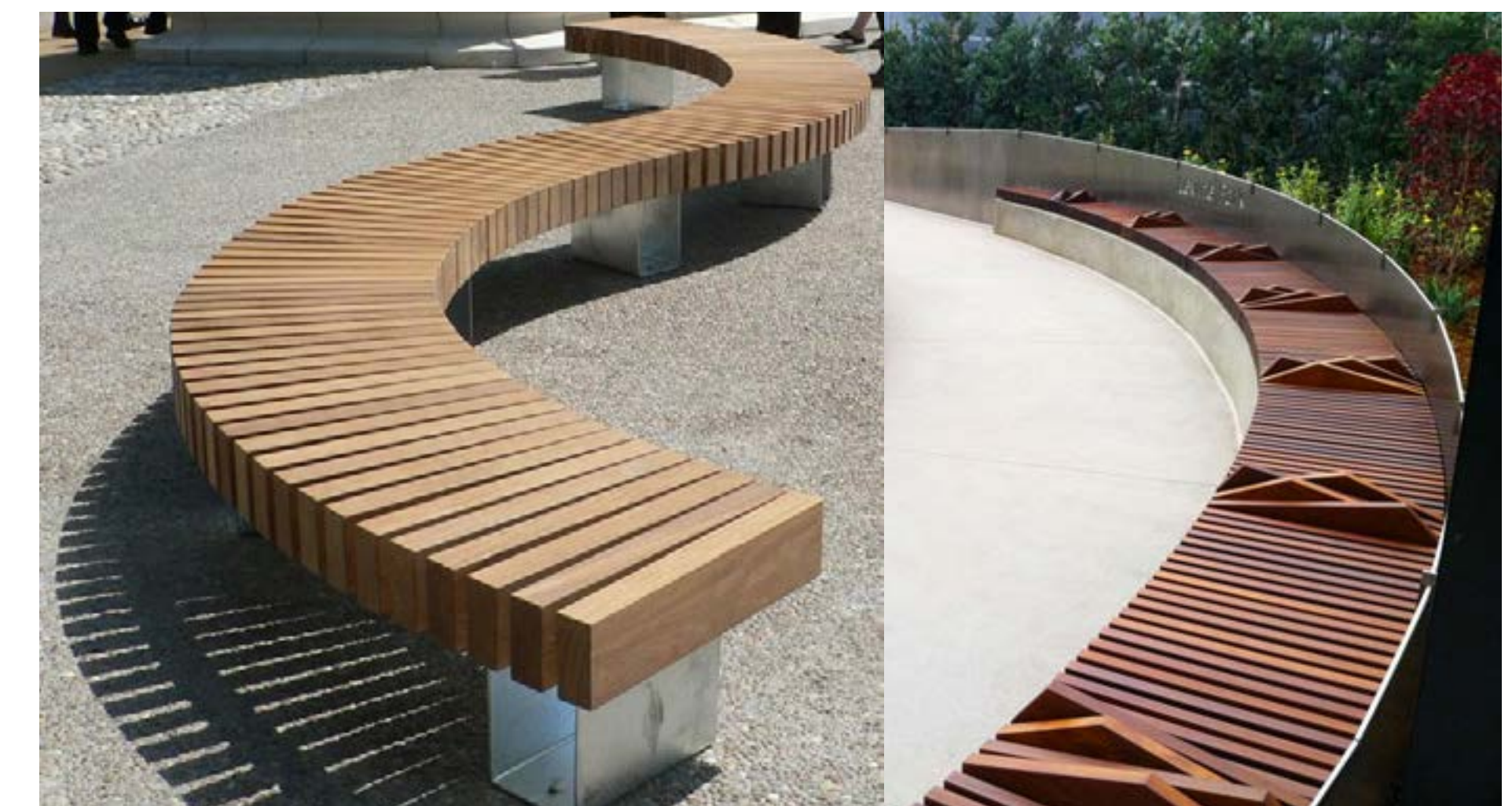
INSPIRATION IMAGES



Terraced Walls and Planting



Grassy Seating Area



Bench Seating

BEAUMARIS LAKE OPEN SPACE | EAST PARK CONCEPT - OPTION 1

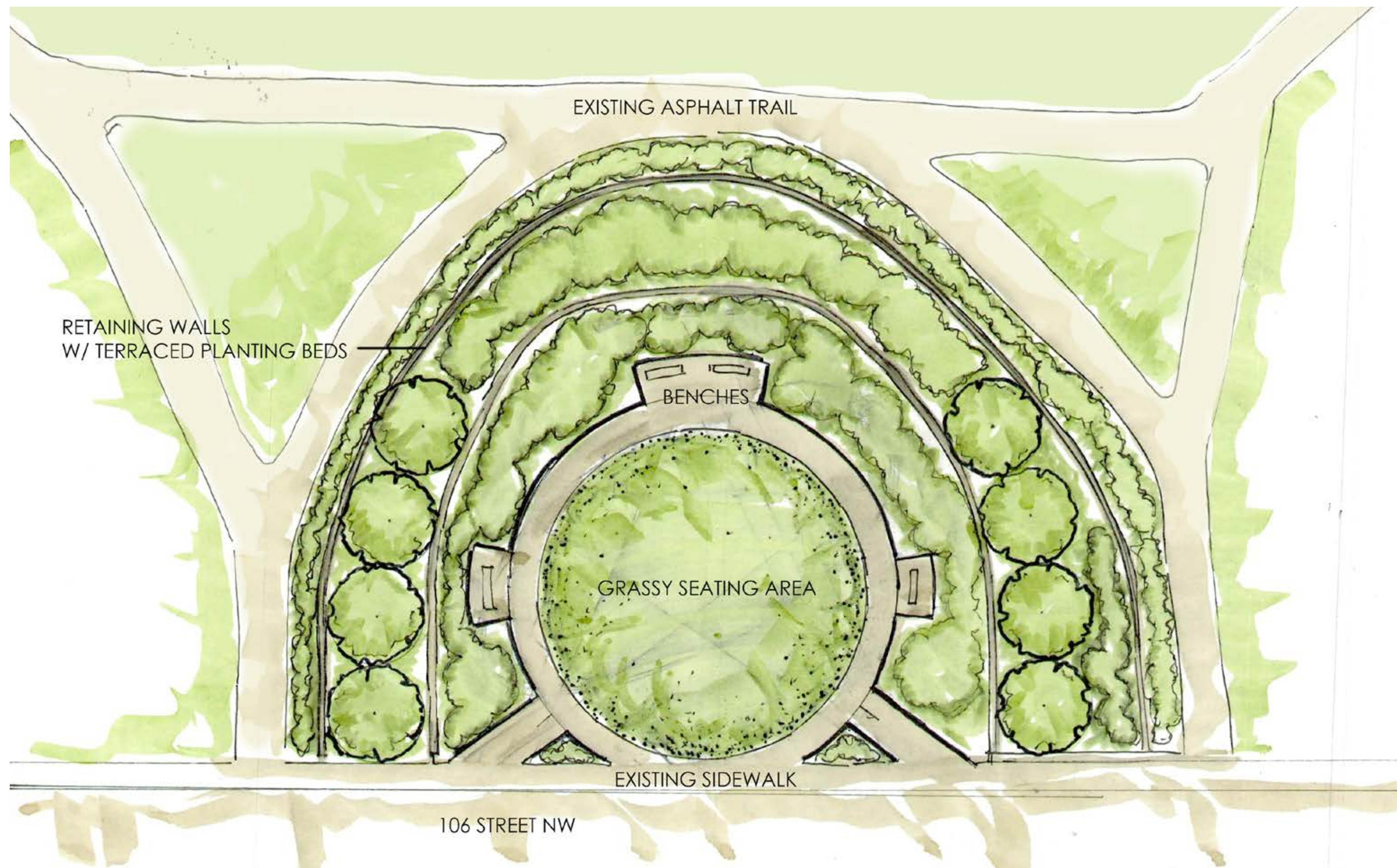




EXISTING SITE CONDITIONS

BEAUMARIS LAKE OPEN SPACE | EAST PARK CONCEPT - OPTION 1





Key Plan

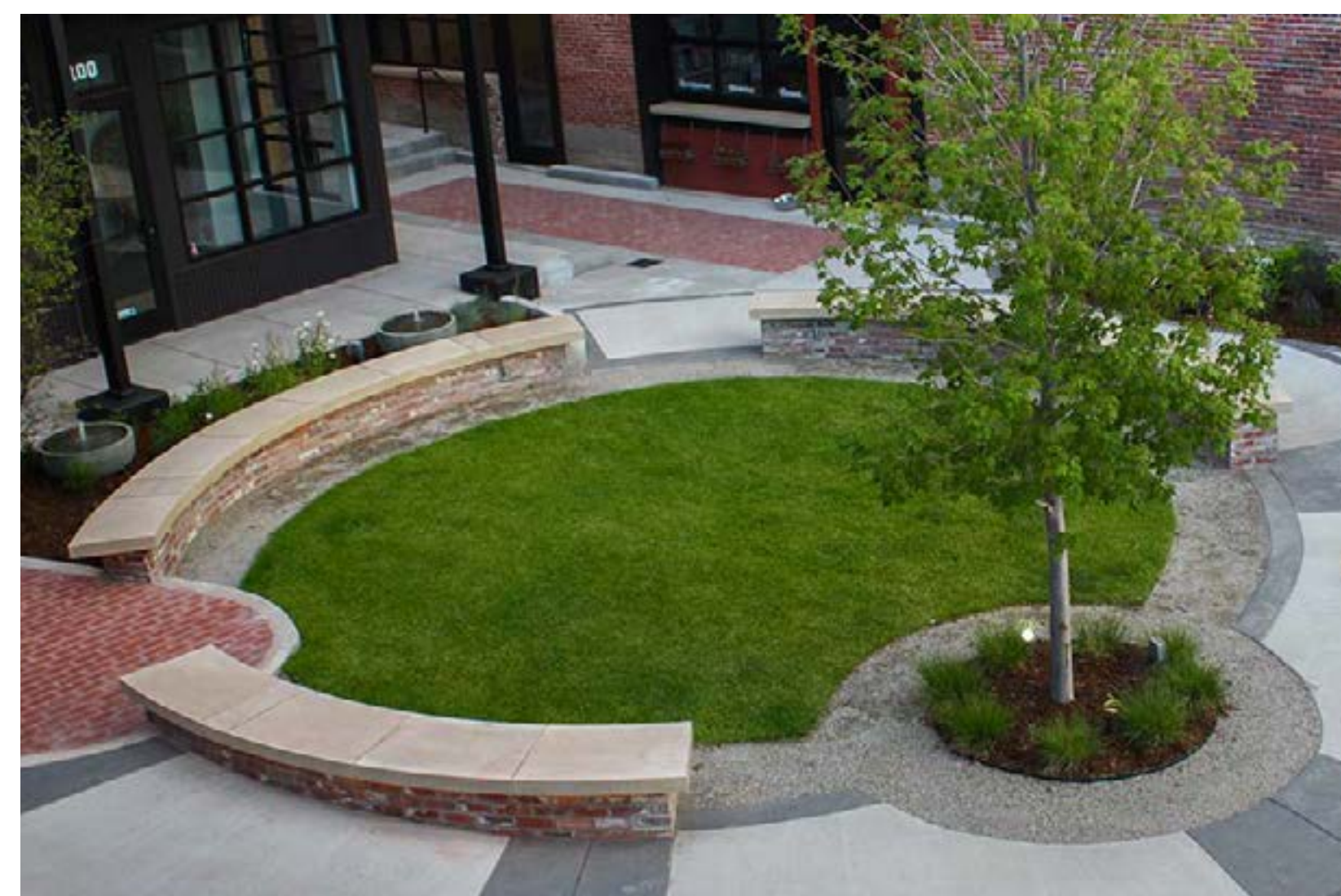
KEY FEATURES

- Large open grass space adjacent to street
- Terraced planting beds with low, trailing planting
- Maximize open space at upper area with seating
- Site Lighting

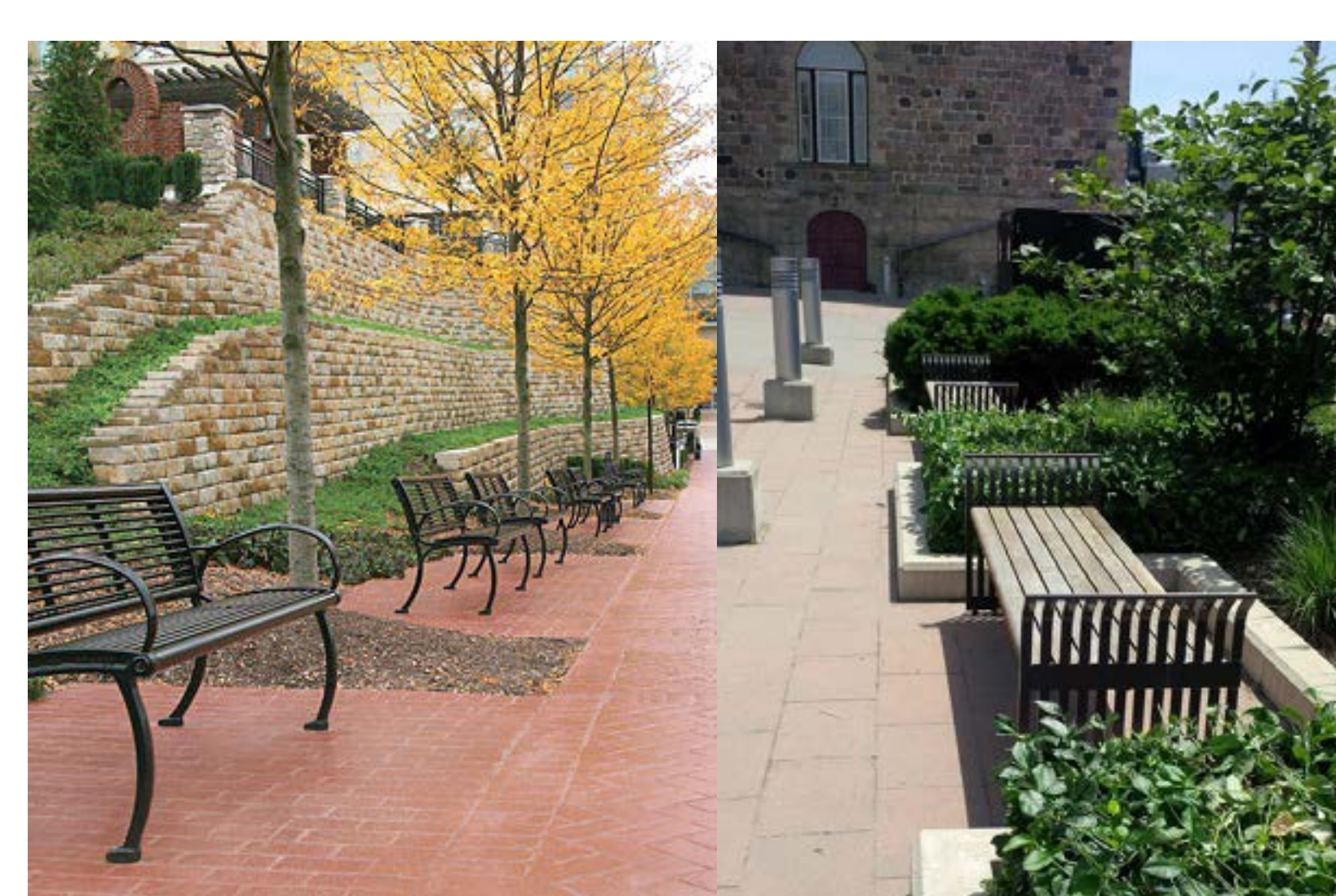
INSPIRATION IMAGES



Terraced Walls and Planting



Grassy Seating Area



Bench Seating



EXISTING SITE CONDITIONS

