

Balwin & Belvedere

Year 1 Impact Snapshot 2020



The Neighbourhood Revitalization program offers resources to support both social and physical infrastructure in Balwin and Belvedere.

June 2018 City Council decided to bring the Neighbourhood Revitalization Program to the neighbourhoods of Balwin and Belvedere

2019 working closely with a community working group, the Revitalization Strategy for Balwin and Belvedere was developed. In 2020 implementation teams were formed: **Revitalization Guiding Team and Project teams**



2020 working closely with a community capital project team, the neighbourhoods of Balwin and Belvedere were asked their thoughts and ideas on capital investment opportunities

2021 these ideas were synthesized, vetted with neighbourhood stakeholders and prioritized to develop recommendations for capital investments

The Covid-19 pandemic has impacted our neighbourhoods and communities across Edmonton including the implementation of the 1st year of the Revitalization.

Revitalization outputs

The Revitalization Guiding Team established:



3 # of new projects identified

- Micro Orchard and Community Garden
- Revitalization Newsletter
- Capacity building in Fund development

350+

of volunteer hours contributed overall to the Revitalization in 2020

\$20/hr • This translates into \$7000+ of volunteer contribution into the neighbourhood

5 # of project start ups

- Capital project team
- Safety project Team

BELOW WERE STALLED BY COVID:

- Historical Walk
- Information hub
- Food truck event

6

of projects identified in the strategy for year 1 and 2

30

of unique individuals involved in the planning and development of the implementation

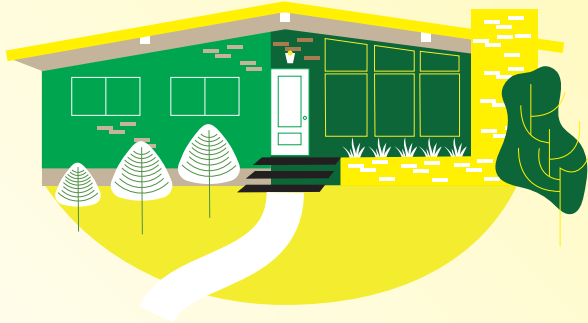
(attended more than 3 meetings for a project)

23

of stakeholder groups connected with around the Revitalization

churches, schools, non profits, businesses

Capital Overview



Community capital project team

4

members of the community on the team

100+

hours contributed

Public Engagement

- Developed a survey and workbook

200+ survey responses

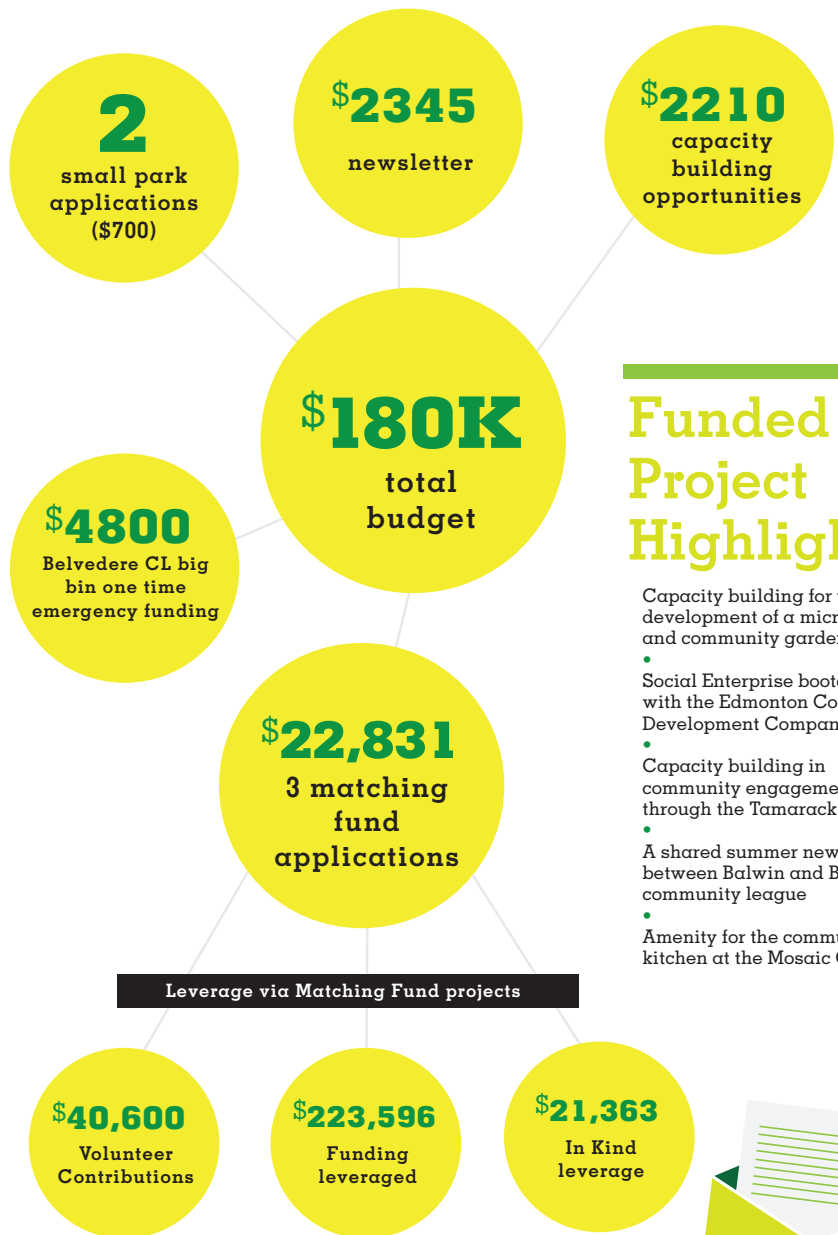
Idea Generation

- Data analysis and theming to identify projects for capital investment
- Review and edits of draft report

Prioritization

- Working with consultants to develop criteria for prioritization
- Discussions with neighbourhood stakeholders to confirm and/or adjust criteria for final decision making on recommendations.
- Review and edits of report

Program budget overview



Funded Project Highlights

- Capacity building for the development of a micro orchard and community garden
- Social Enterprise bootcamp with the Edmonton Community Development Company
- Capacity building in community engagement through the Tamarack Institute
- A shared summer newsletter between Balwin & Belvedere community league
- Amenity for the community kitchen at the Mosaic Centre

Feedback Received

• "Thanks for sponsoring my **Social Enterprise Bootcamp** experience. I found the bootcamp very interesting. I am putting the experience to good use. I have been asked to chair a committee of the board of directors of **Africa Center** (I am a board member) to look at the possibility of establishing or to look at some of the existing programs that could be converted into a social enterprise to generate a sustainable source of funding for some other programs. Africa Centre is a not for profit organization that caters for the advancement of African-Canadians in Alberta." - **Social Enterprise Bootcamp participant**

• "I feel the work this team has done to this point is admirable and challenging. It is admirable because there are people on this team who are trying to make an effort to connect with the community and community members. It is challenging due to the pandemic." - **Revitalization Guiding Team member**