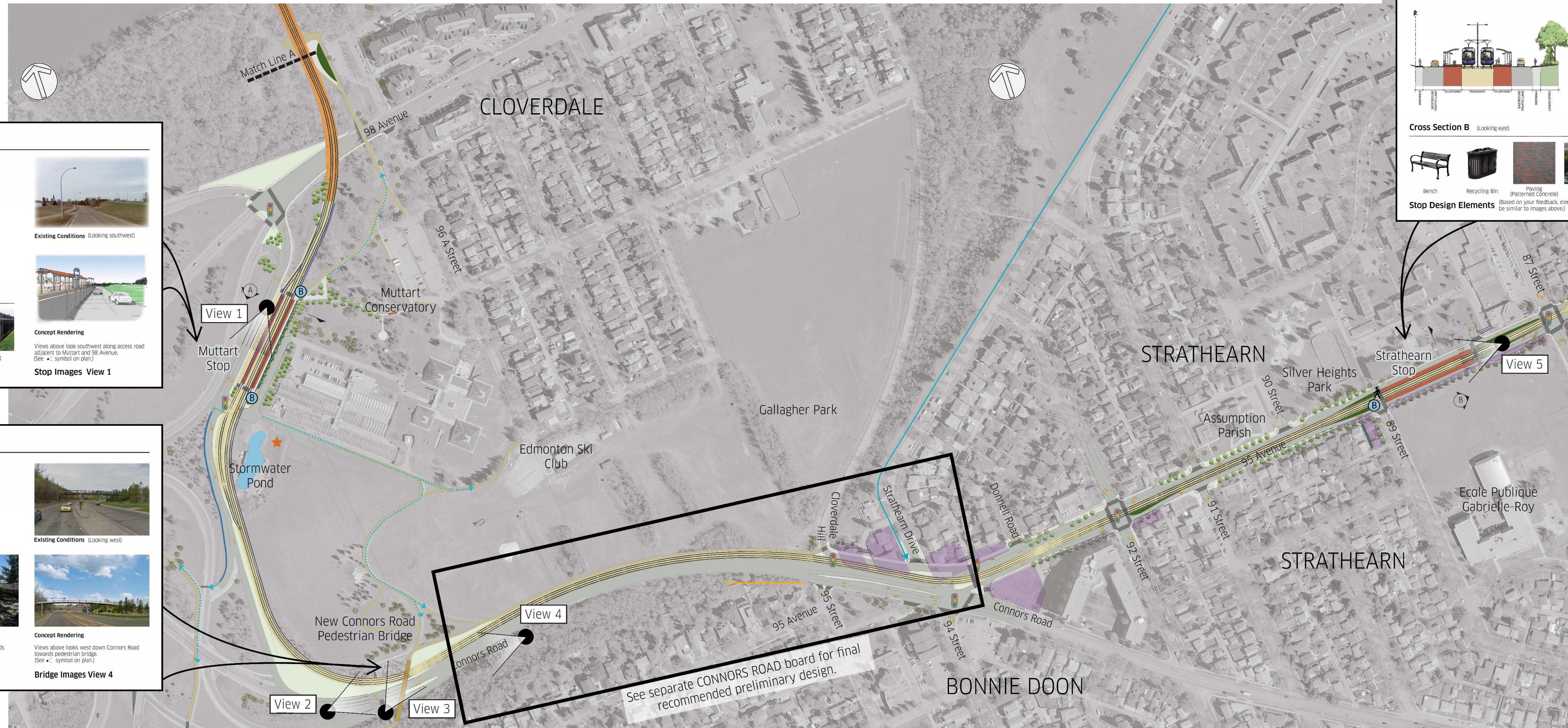


# Corridor & Access Plan - Area 4A



### Muttart Stop

**Existing Conditions** (Looking southwest)

**Stop Design Elements** (Based on your feedback, elements selected for project will be similar to images above.)

- Bench
- Recycling Bin
- Paving (Patterned Concrete)
- Column Wrap
- Railing

**Stop Images View 1**

### Strathearn Stop

**Existing Conditions** (Looking west)

**Stop Design Elements** (Based on your feedback, elements selected for project will be similar to images above.)

- Bench
- Recycling Bin
- Paving (Patterned Concrete)
- Column Wrap
- Railing

**Stop Images View 5**

### Connors Road Pedestrian Bridge

- The existing pedestrian bridge is too short to span the corridor when the LRT is constructed. A new pedestrian bridge is required.
- During construction, pedestrians and cyclists will be detoured, as required. See separate Environmental Impact Assessment (EIA) board for preliminary pathway detour information.

**Existing Conditions** (Looking west)

**Concept Rendering**

View above look east up Connors Road towards pedestrian bridge. (See < symbol on plan.)

**Bridge Images View 2**

**Concept Rendering**

View above looks northeast down towards Connors Road and pedestrian bridge. (See < symbol on plan.)

**Bridge Images View 3**

**Concept Rendering**

Views above looks west down Connors Road towards pedestrian bridge. (See < symbol on plan.)

**Bridge Images View 4**

### Legend

Trackway - Embedded	Concrete Walk	Shrubs	Access Closure	Bike Parking
Trackway - Elevated	Shared Use Path	Potential Property Impacts	Traction Power Sub Station (Approximate Location)	Potential Retaining Wall Location
Asphalt Road Surface	Potential Landscape Area (Hard or Soft)	Existing Trees	Traffic Signals	Existing Bike Connection
Pedestrian Crossing	Stop Platform	Proposed Trees	Signalized Pedestrian Crossing	Proposed Bike Connection

All Bus Stop locations and bus routes are being reviewed by ETS to provide an integrated Bus/LRT system. This will be completed in 2024.

\*Specific site evaluation must be completed prior to final location and quantity.

