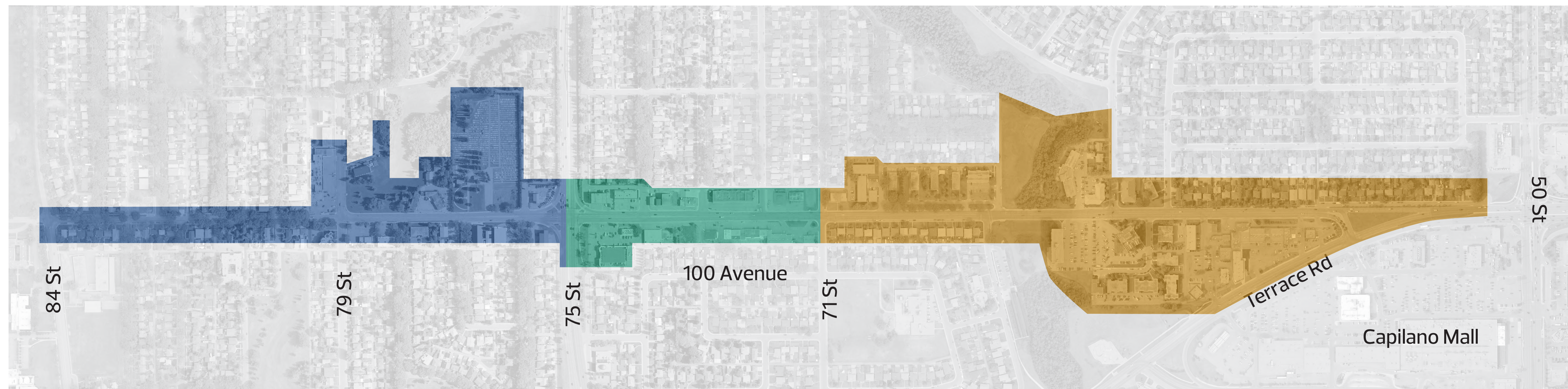


# 101 Avenue Corridor

Today, 101 Avenue is characterized by vehicle-oriented design, with parking lots in front of residential and commercial properties and a mix of land-uses set back from the street.

In the public engagement materials the 101 Avenue project area is organized into three sections:

1. **West:** 84 Street to 76 Street
2. **Central:** 76 Street to 70 Street
3. **East:** 70 Street to 50 Street

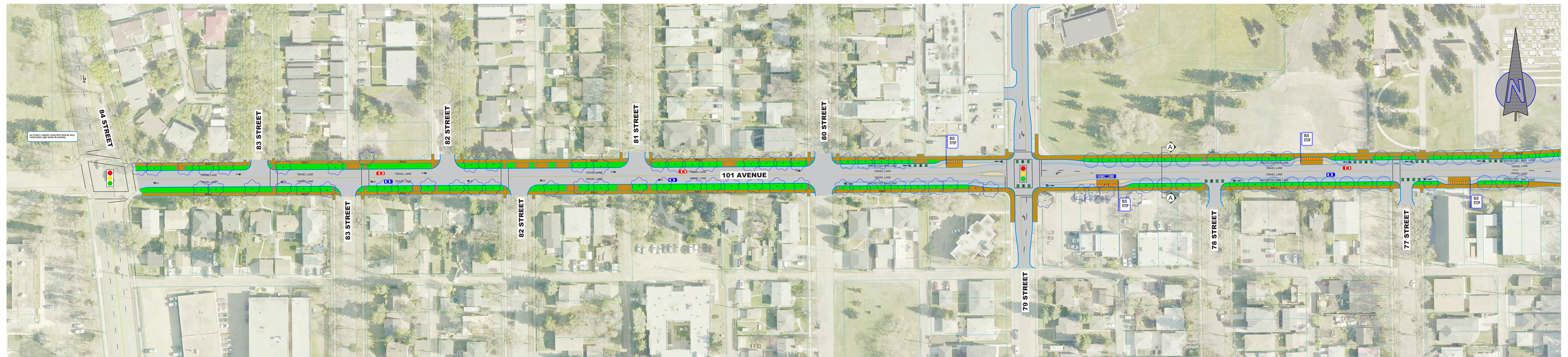


**ADVISE**

**SHARE YOUR VOICE**  
**SHAPE OUR CITY**

**Edmonton**

# West 101 Avenue: 84 Street to 76 Street

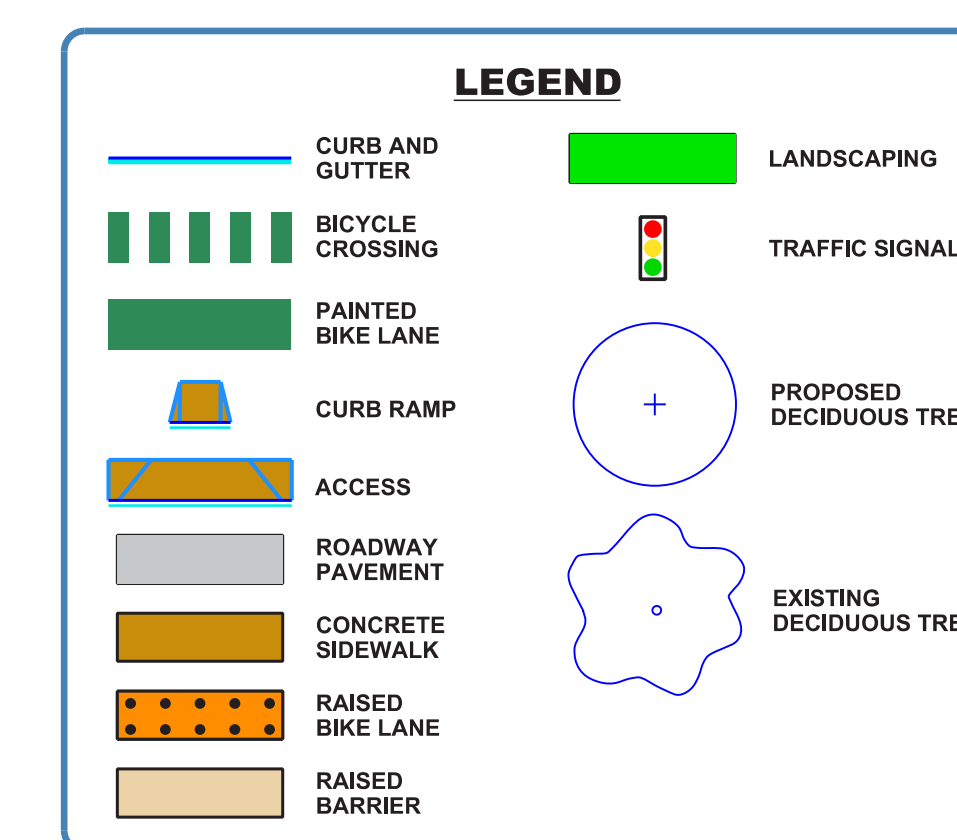


## What We Heard June 2021

- + Wider sidewalks and green separation between vehicles and people walking is important
- + Add more greenspaces and trees to the area
- + More trees and landscaping added between 79 Street and 75 Street

## What We Learned

- + There is a need to provide an improved cycling link to 84 Street to integrate with Bike Network improvements planned from 84 Street to the District Connector route in the River Valley.

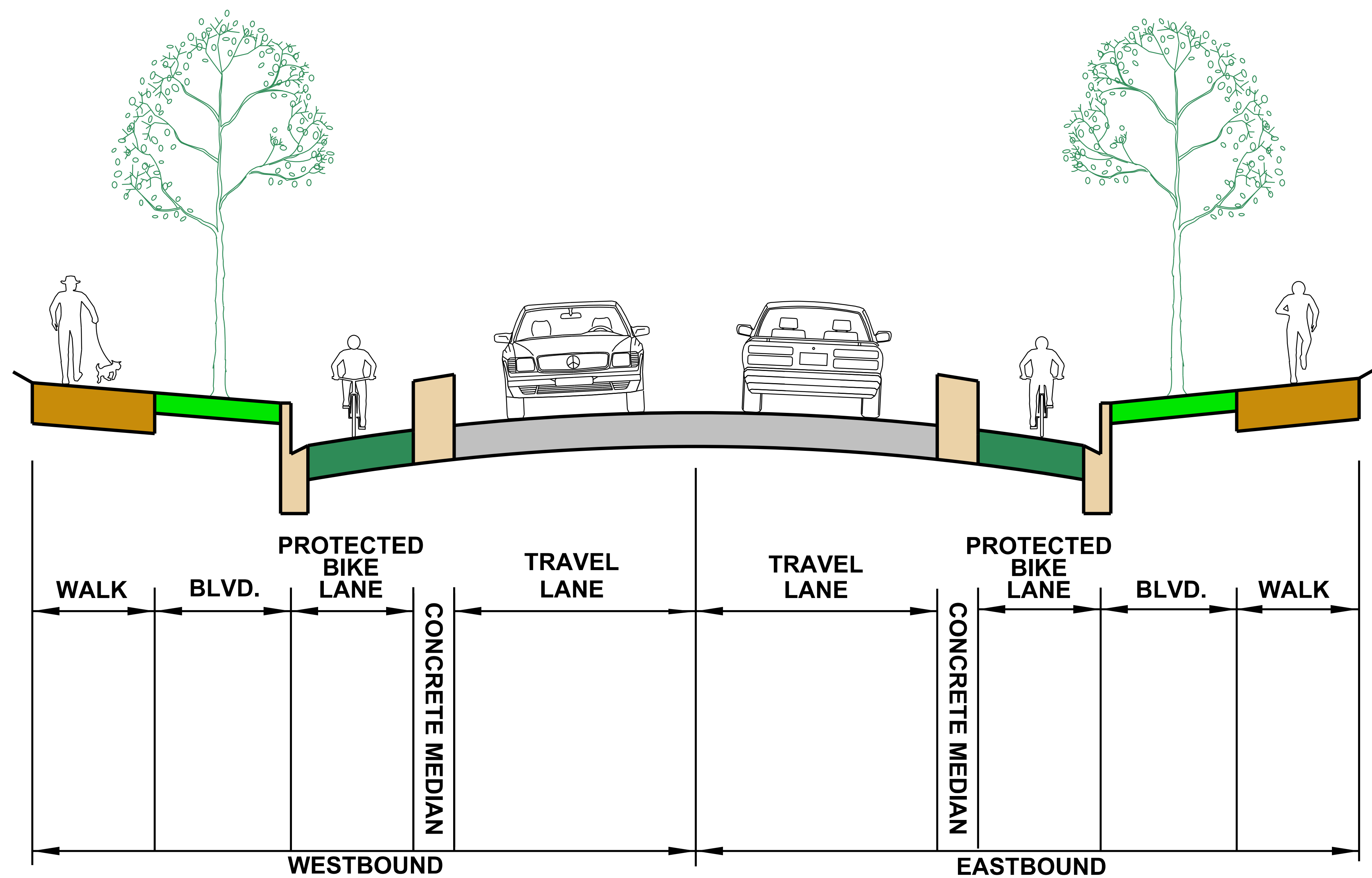


SHARE YOUR VOICE  
SHAPE OUR CITY



# West 101 Avenue: 84 Street to 76 Street

## Cross Section A: West of 78 Street



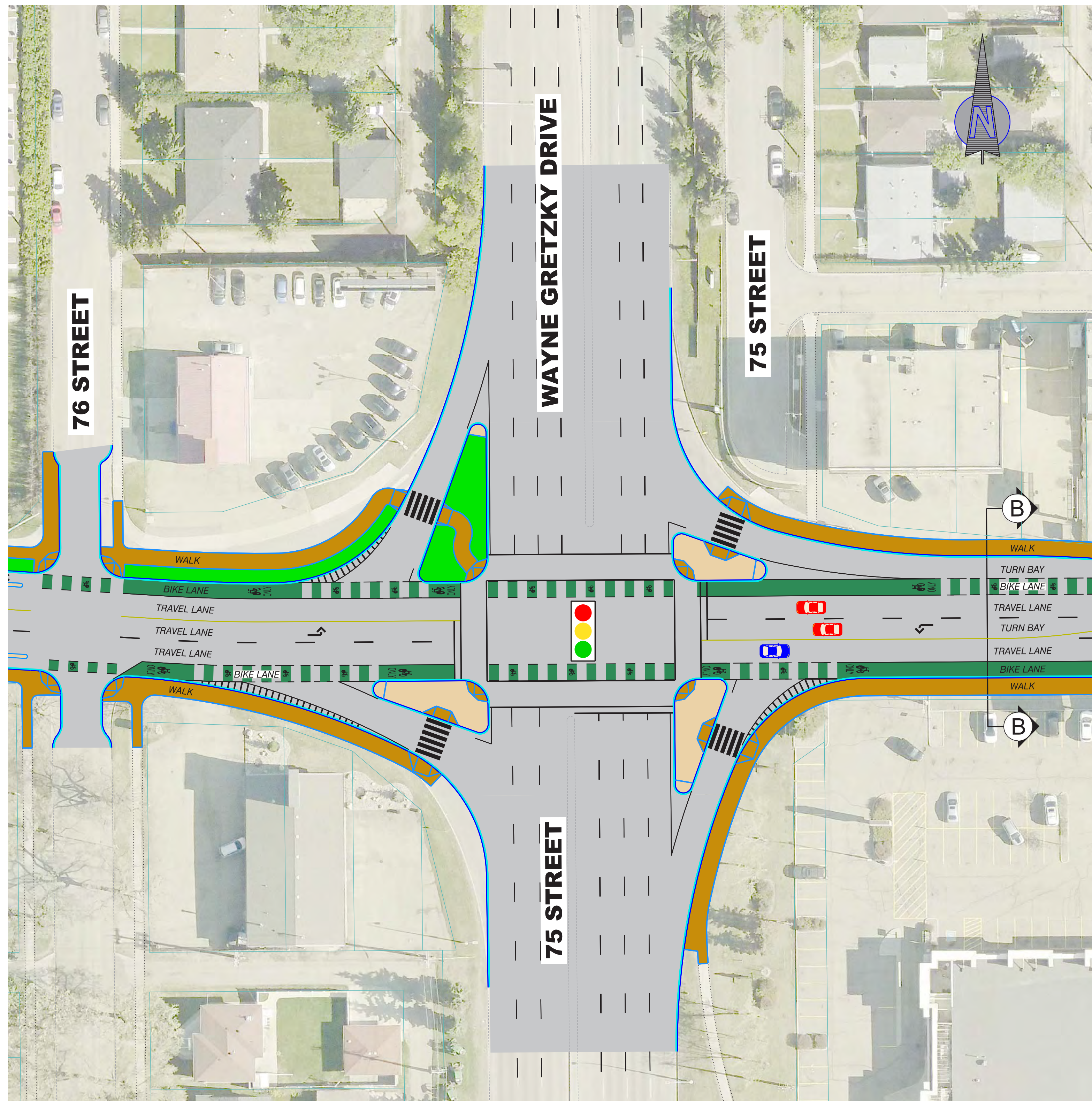
### Proposed improvements

- + On road shared bike lanes that connect to the planned shared use path at 84 Street (currently scheduled for 2022 construction)
- + New sidewalks and new road surface
- + Maintained or new landscaping along the boulevard
- + Provide pedestrian lighting

SHARE YOUR VOICE  
SHAPE OUR CITY

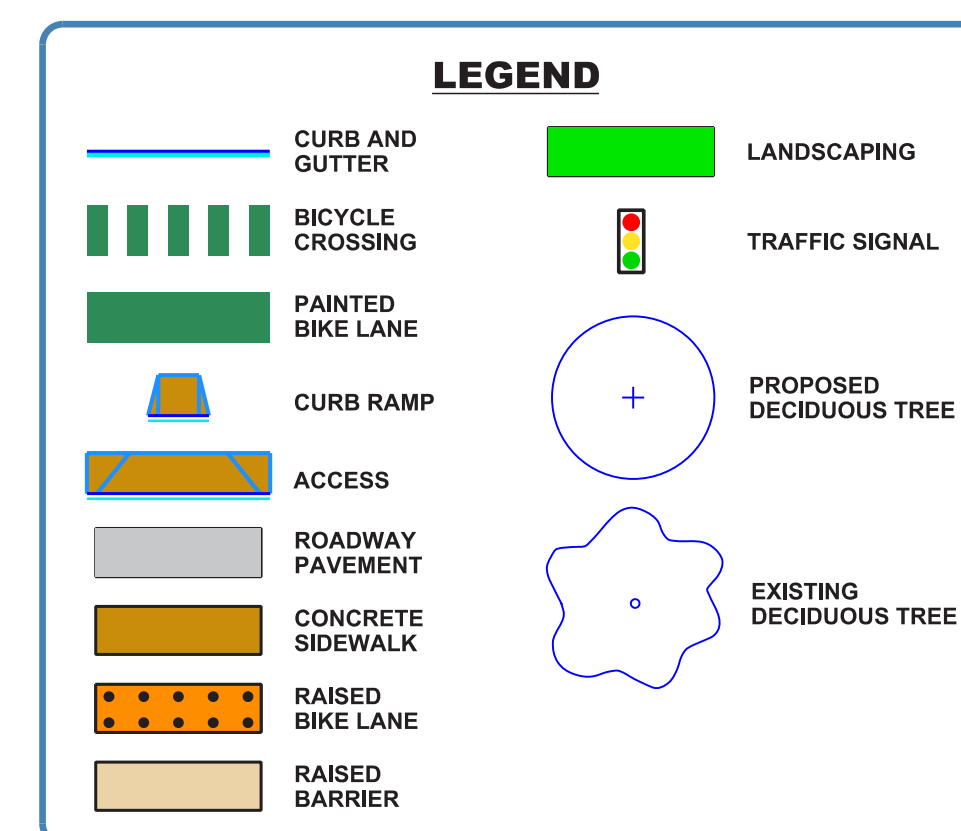


# 75 Street Intersection



## Proposed improvements

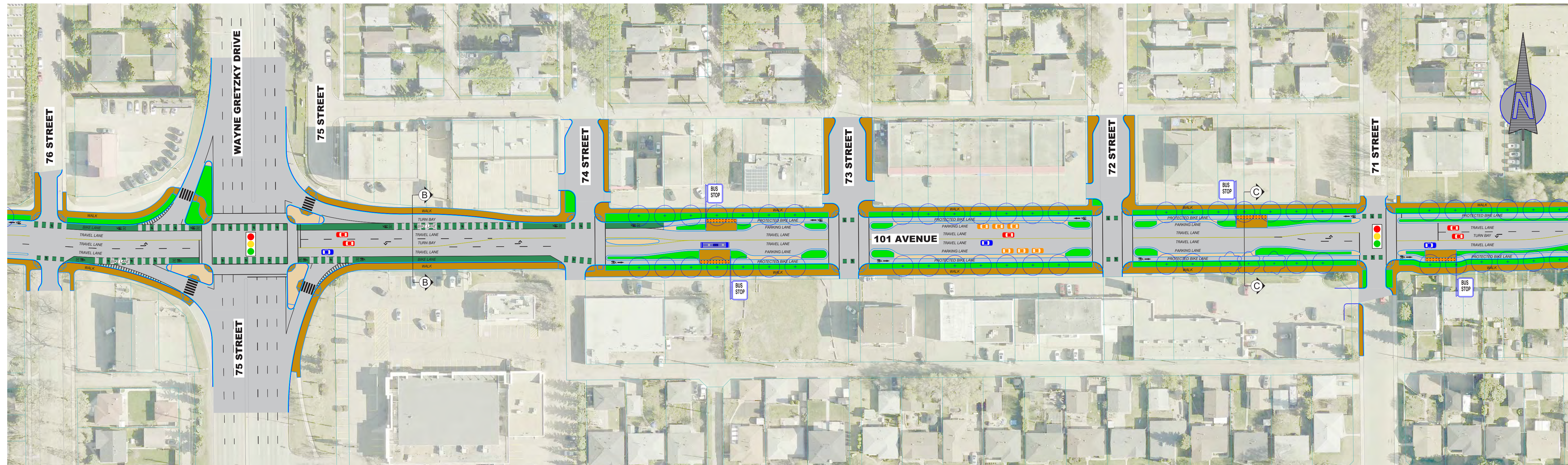
- + Three lanes of travel moving north/south, one lane of traffic in each direction moving east/west
- + Maintain left turn lanes in all directions
- + Improve right turn bays in all directions, change the configuration of the island and add a right turn bay from 75 Street northbound to 101 Avenue eastbound
- + Right turn lane moving northbound is will become a yield right-turn
- + Protected bike lanes become painted bike lanes to accomodate vehicles making right turns



**SHARE YOUR VOICE**  
**SHAPE OUR CITY**



# Central 101 Avenue: 76 Street to 70 Street

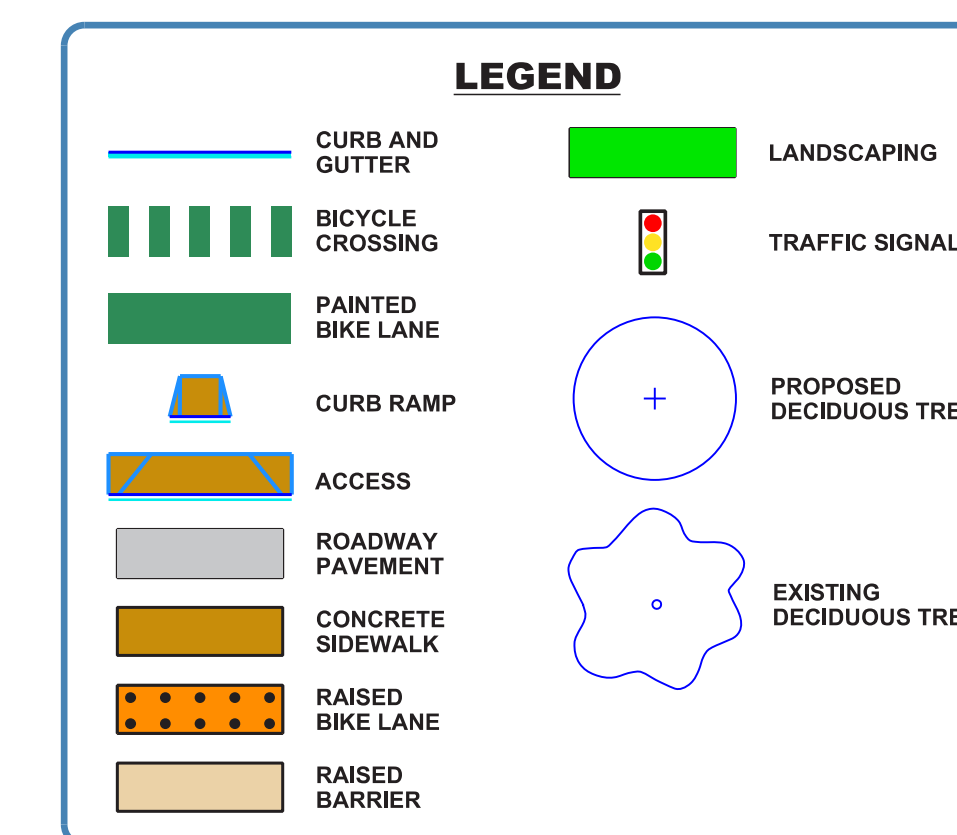


## What We Heard June 2021

- + On-street parking is important for this section
- + Add landscaping to boulevards to beautify the area
- + Wider sidewalks and separation from vehicles

## What We Learned

- + Removing the proposed centre median from the corridor study allows for improved emergency services access and more room for the pedestrian space
- + Reconfiguring the transit stops to the street-side of the bike lanes improves rider experience

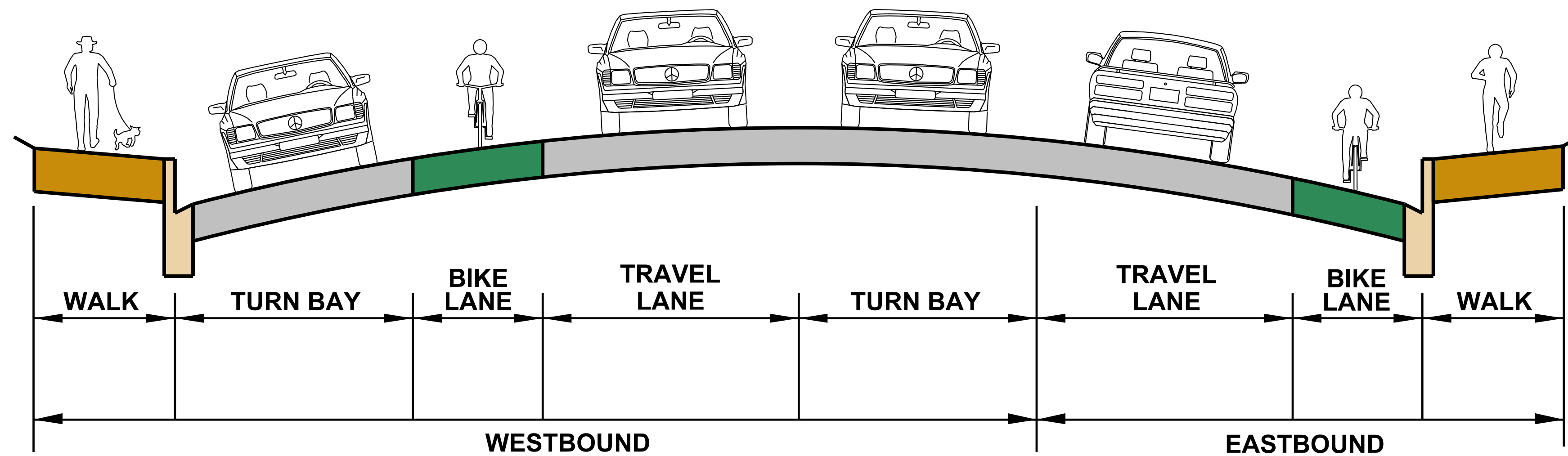


SHARE YOUR VOICE  
SHAPE OUR CITY

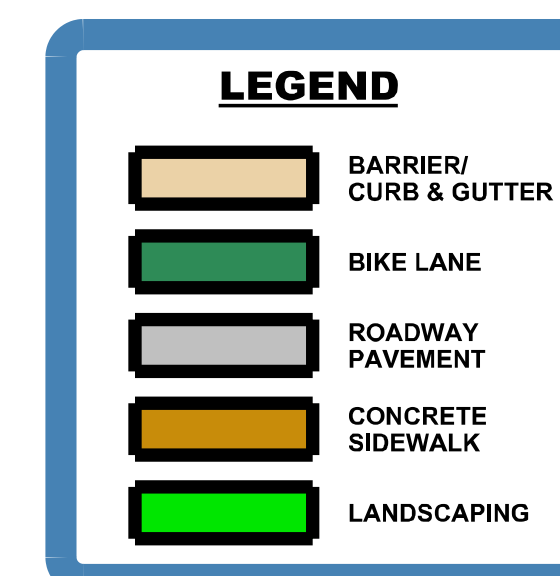
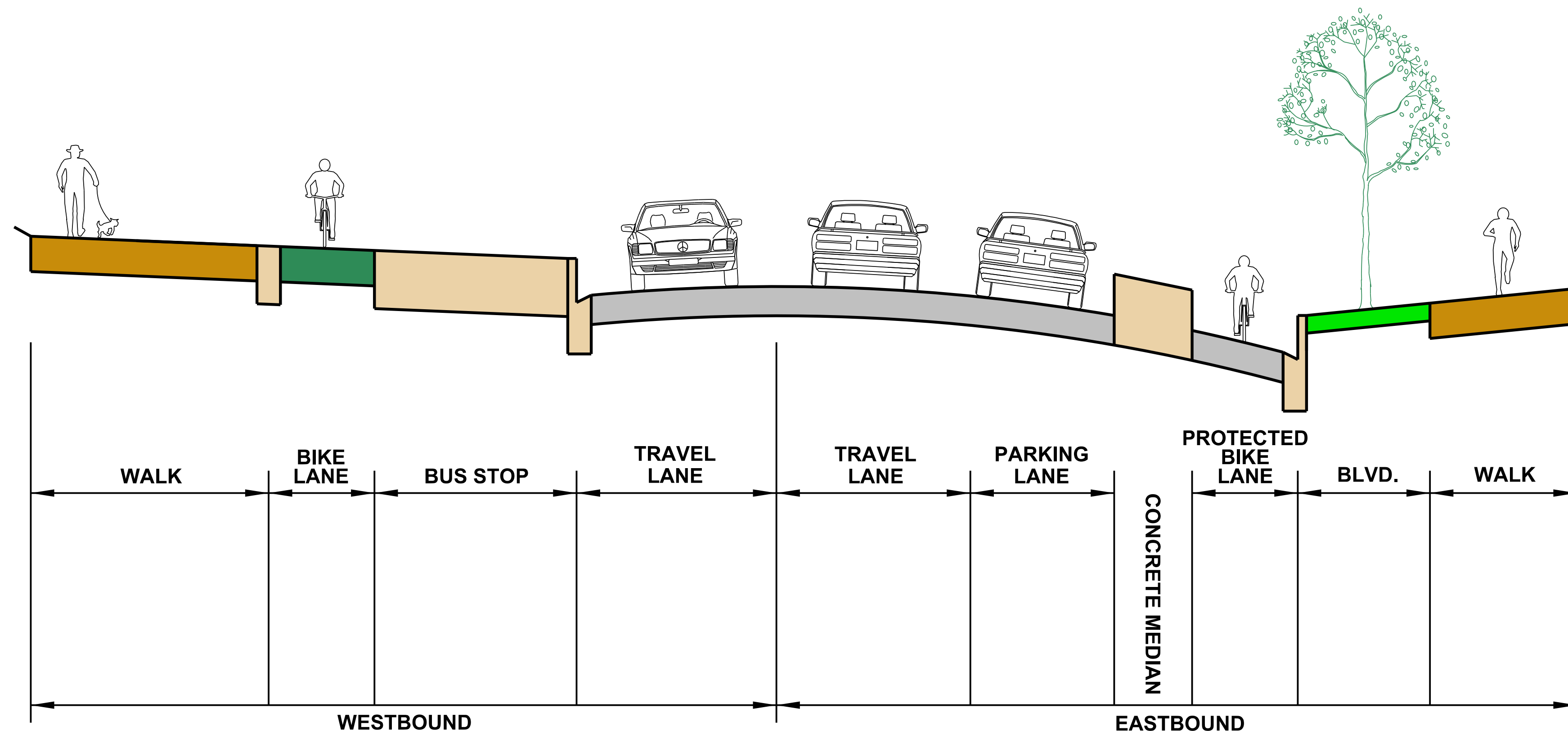


# Central 101 Avenue: 76 Street to 70 Street

## Cross Section B: East of 75 Street



## Cross Section C: West of 78 Street



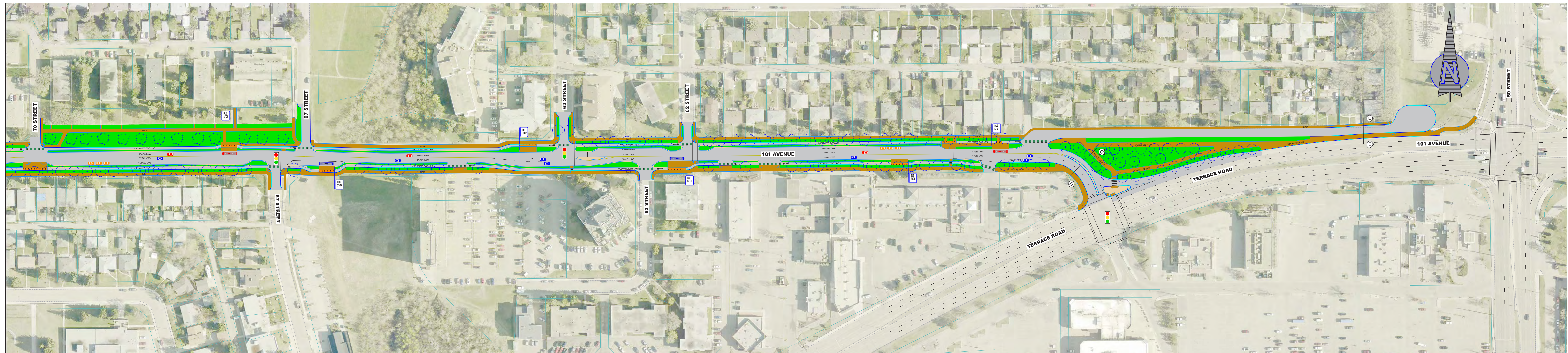
### Proposed improvements

- + Reduce vehicle lanes to one in each direction
- + Create on-street parking between 75 Street and 71 Street
- + Add left turn lanes at 71 Street for north and south turns
- + Add protected bike lanes
- + Add missing curb ramps at intersections, enhanced markings or crossing lights at cross walks, reduce crossing distances and provide a direct and clear path of travel for people who walk
- + Provide pedestrian lighting

SHARE YOUR VOICE  
SHAPE OUR CITY



# East 101 Avenue: 70 Street to 50 Street

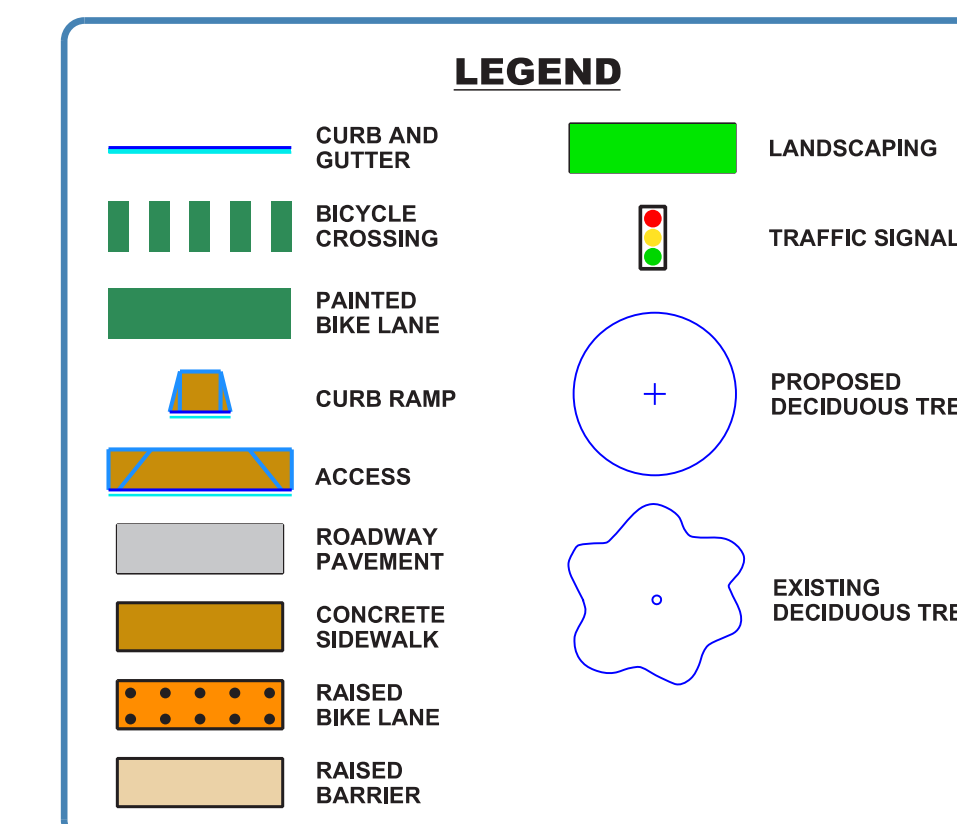


## What We Heard June 2021

- + Concerns about closing 101 Avenue at 50 Street to vehicles
- + Bike lanes are supported, but ensure safe access to Capilano Mall

## What We Learned

- + Removing the proposed centre median from the corridor study allows for improved emergency services access and more room for the pedestrian environment
- + Reconfiguring the transit stops to the street-side of the bike lanes improves rider experience

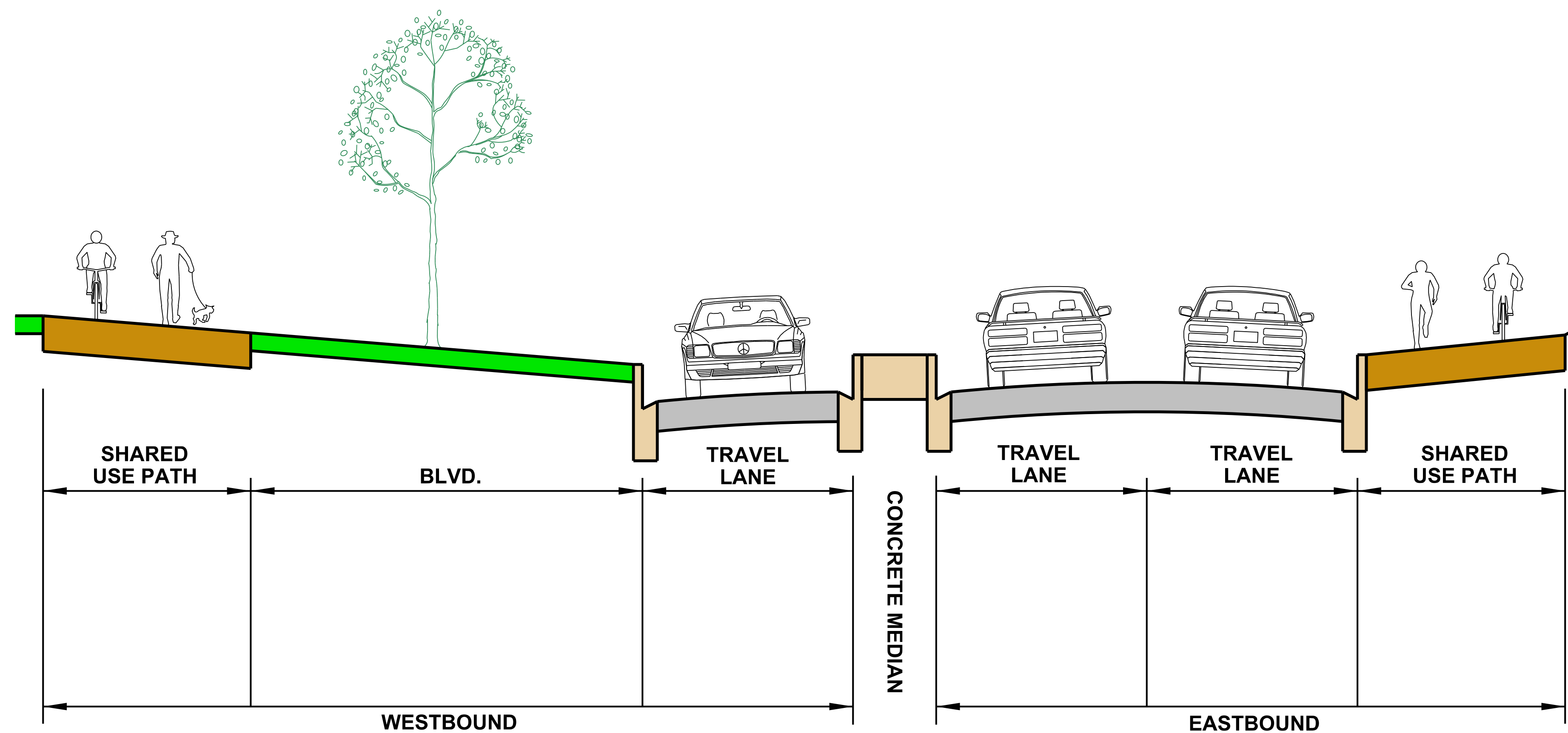


**SHARE YOUR VOICE**  
**SHAPE OUR CITY**



# East 101 Avenue: 70 Street to 50 Street

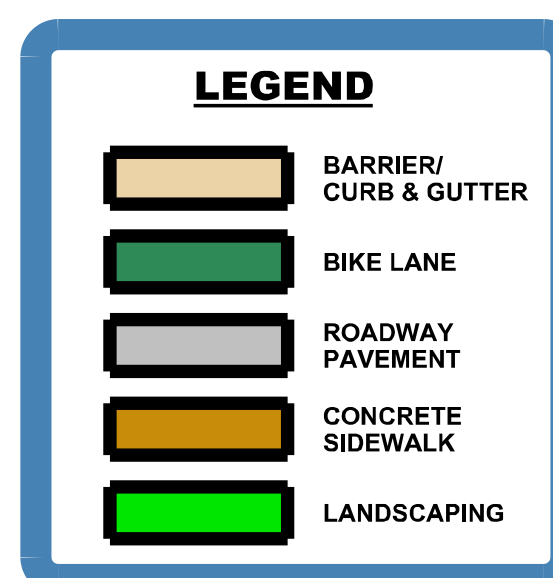
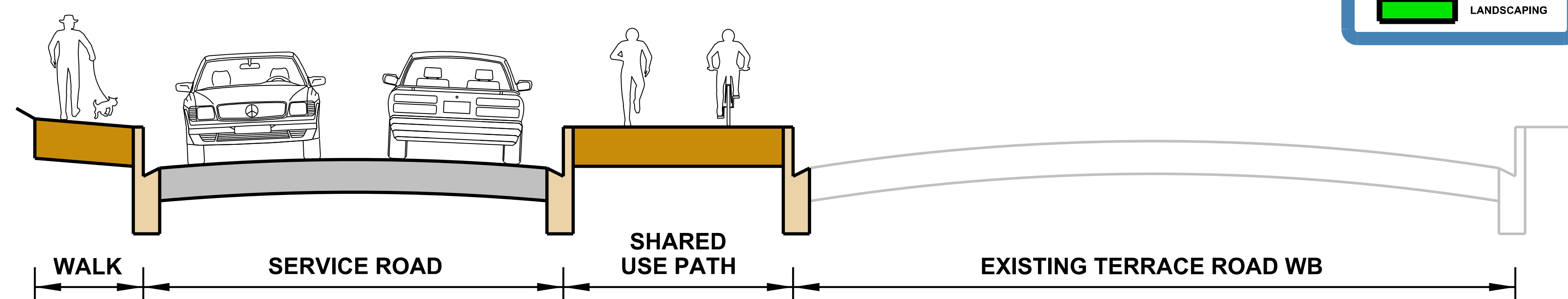
## Cross Section D: North of Terrace Road



### Proposed improvements

- + Close 101 Avenue between Terrace Road and 50 Street, available for local traffic only
- + Provide protected bike lanes on 101 Avenue
- + Provide a cycling connection to the 50 Street shared-use path
- + Reduced vehicle lanes to one lane in each direction
- + Add left turn lanes at key intersections
- + Provide pedestrian lighting
- + Close key accesses on the south side of 101 Avenue as future redevelopment occurs

## Cross Section E: West of 50 Street



SHARE YOUR VOICE  
SHAPE OUR CITY





# Landscaping

## What We Heard June 2021

- + Use native or adaptive plants for landscaping
- + Eagerness to add green boulevards and trees to 101 Avenue

## What We Learned

- + Not all locations along 101 Avenue can accommodate tree-lined boulevards
- + Locations for landscaping will follow universal design standards, set-backs and safety guidelines

## Proposed improvements

- + Tree-lined and landscaped boulevards
- + Space for plantings out front of businesses
- + Added benches and waste receptacles

## Landscaping examples



**ADVISE**

**SHARE YOUR VOICE**  
**SHAPE OUR CITY**

**Edmonton**