



# What We Heard

Garneau  
Neighbourhood  
Renewal –  
Exploring  
Opportunities

May – September 2019

BUILDING GREAT  
NEIGHBOURHOODS

Edmonton

## TABLE OF CONTENTS

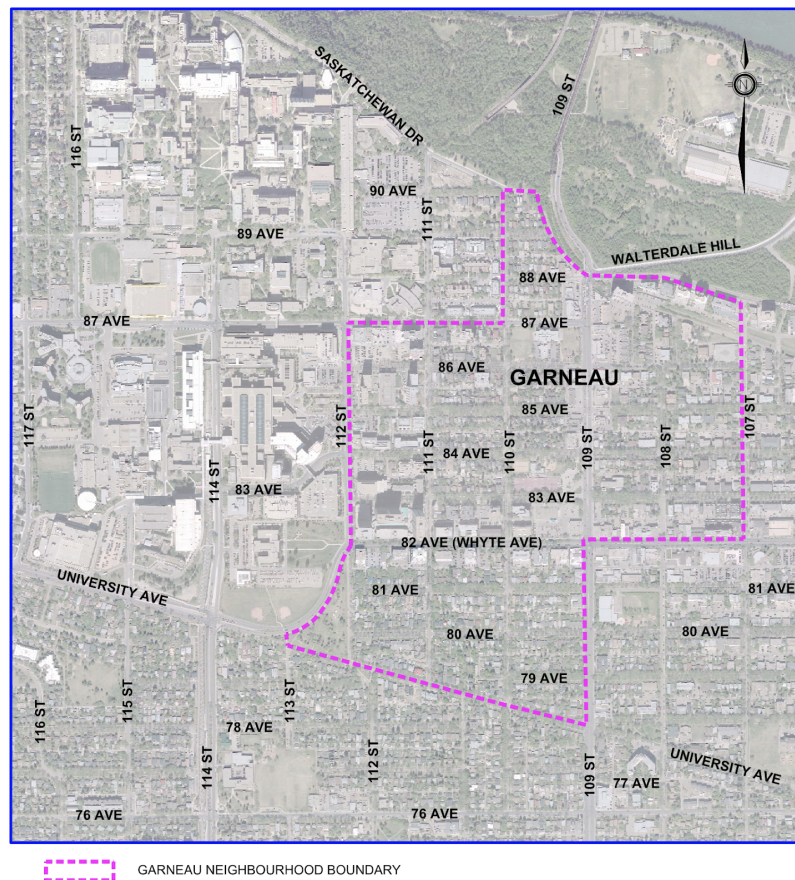
Project background	PG 2
How we engaged with you	PG 5
What we heard	PG 5
Building a project vision together	PG 10
Next steps	PG 11

## PROJECT BACKGROUND

Planning for Garneau's Neighbourhood Renewal began in late 2018, with construction scheduled for 2021–2022.

Through the City of Edmonton's Building Great Neighbourhoods and Open Spaces branch, the Neighbourhood Renewal program will rehabilitate roads, replace street lights, curbs and gutters, repair sidewalks, and connect missing sidewalks where possible. Cost sharing opportunities will be made available through the Local Improvement process for sidewalk reconstruction and decorative street light upgrades in the neighbourhood. The City will also be considering other enhancements that would improve how people use the neighbourhood to walk, bike and drive, and how they enjoy City-owned green spaces and parks.

*Garneau neighbourhood boundary map*



## Public Engagement Spectrum

The City of Edmonton is committed to involving the people affected by the decisions it makes by seeking diverse opinions, experiences, and information so that a wide range of input is available to decision makers. Public input, technical analysis, and City policies are all considered in determining the future neighbourhood design.

The City's Public Engagement Spectrum defines the public's level of influence during engagement processes.

Activities during this phase were at the REFINE level on the City's Public Engagement Spectrum.



## Garneau Public Engagement and Communications Committee

In a partnership with residents and the City, some residents of Garneau have volunteered as members of the Garneau Public Engagement and Communications Committee.

The collaborative group ensures transparency and open communication during the neighbourhood renewal project. It provides direction on appropriate methods to engage residents, business owners, and other community stakeholders, and helps shape the vision for the renewal.

This committee is not involved with decision making and does not influence the neighbourhood design. It is focused solely on providing input for the best public engagement and communication strategies for the residents of Garneau. The ad hoc committee meets approximately once a month, during evening hours. Membership is open to all residents and is not limited to those with a community league affiliation.

### Where we are in the decision-making process

We have created a road map (below) to help you understand the steps of the renewal process and how you can participate. At each step, we will tell you what the purpose is and how your input will inform the decisions being made. We commit to report back on how we used your input through What We Heard reports and at public engagement events. Please note that steps may happen concurrently and out of sequence.

*We are at Exploring Options and Tradeoffs.*



## How we engaged with you to Explore Opportunities (May–September 2019)



Community pop-ups, June to August 2019  
+ Approximately 100 people engaged



Online engagement, June to September 2019  
+ 56 comments



Exploring Opportunities public event, St. Basil's Cultural Centre,  
September 14, 2019

- + 210 attendees
- + 32 feedback forms received (paper and online)
- + Hundreds of comments on table maps and display boards

### What we heard

The following summarizes what we heard from you over the past several months. All input was considered as we created design options for the neighbourhood to share with you during the Options and Tradeoffs stage of engagement (November 2019 to Spring 2020).

#### Community pop-ups and online engagement

Our team “popped up” at various neighbourhood locations that we heard needed improvement or had an opportunity for enhancements. We connected with people who walk, bike, and use the local parks. We also spoke to home owners and those visiting the area to collect local knowledge and understanding. During this time, residents were also invited to upload photos and share comments, ideas, and opportunities online using an interactive online map of the neighbourhood.

## We heard:

- + Improve safety for all users around Garneau School during drop-off and pick-up times
- + Improve safety for people who walk and bike along 90 Avenue east of 110 Street. This is a well used connection for people who walk and bike to get to the High Level Bridge, but is confusing for drivers (dead end) and there are conflicts between users
- + One-way roads are generally supported to reduce shortcutting, but wayfinding and navigating through the neighbourhood can be a challenge, and sometimes wrong way movements occur by people who bike as well as people who drive
- + Streets are too dark and need improved lighting
- + City Arts Park needs improvements
- + There is a lack of on-street visitor parking (residential)
- + Poor sidewalk conditions and missing sidewalks make it difficult for wheelchairs, strollers, or people with mobility challenges
- + Braithwaite Park is in need of enhancements and ongoing maintenance to make it more inviting and comfortable to visit
- + There is a desire for an off-leash dog park within Braithwaite Park
- + There is a desire for intersection improvements at 109 Street and 88 Avenue
- + There is a desire for a fully signalized intersection at 109 street and 86 Avenue

## Exploring Opportunities public event

On September 14, 2019, residents shared feedback on areas identified for improvement or enhancement and let us know if anything was missing or needed additional consideration.

### 1. Biking: lanes and connectors

As part of the Southside Bike Network, 110 Street will be the location for a fully separated, protected bike lane. East-west connections



between the 110 Street bike lane and 109 Street are being explored as part of the Southside Bike Network.

**What you told us:**

- + There is support for the South Side Bike Network bike lane along 110 Street between Saskatchewan Drive and 76 Avenue
- + A protected lane is supported

**80 Avenue/81 Avenue: east-west connections between 109 Street and 110 Street**

Currently on the east side of 109 Street, a one-way *eastbound* bike lane exists on 80 Avenue and a one-way *westbound* lane exists on 81 Avenue. There is an opportunity to extend these lanes on the west side of 109 Street to the 110 Street bike lane.

**What you told us:**

- + Support exists for both 80 Avenue and 81 Avenue connector bike lanes

**83 Avenue/84 Avenue: connection from 83 Avenue bike lane to 112 Street/University of Alberta**

While 83 Avenue is the most direct route, a fully signalized intersection exists at 84 Avenue. Both 83 and 84 Avenue routes pose challenges to implementing a bike connection due to driveways, parking lots, and other obstacles that create conflicts.

**What you told us:**

- + There is support for a connection from the existing 83 Avenue facility to 112 Street



### 88 Avenue and 89 Avenue connections

There is an opportunity to provide a new on-street, two-way protected bike lane connector between 109 Street and 110 Street on 89 Avenue. Parking would be removed and one-way eastbound traffic would remain. The existing 88 Avenue bike route would be removed.

#### What you told us:

- + Maintaining a bike lane on 88 Avenue is supported over a new facility on 89 Avenue

## 2. Driving/traffic calming

There are opportunities to improve the driving experience and other driving concerns.

#### What you told us:

- + Locations where there are concerns for drivers
- + Locations where traffic calming measures are suggested to be added/removed to improve traffic flow, as well as to reduce shortcutting and speeding

## 3. 90 Avenue/Saskatchewan Drive area

Opportunities at 90 Avenue and Saskatchewan Drive include the potential for a new lookout, improvements to Adair Park, and an improved intersection design including the addition of curb extensions to slow traffic and improve safety.

#### What you told us:

- + Curb extensions are supported
- + Improve safety for all who drive, bike and walk

#### 4. Walking

New sidewalks are proposed where they are currently missing to improve safety and enhance routes for people who walk.

##### **What you told us:**

- + Locations where sidewalks are missing were identified
- + Locations of difficult/dangerous crossings were identified
- + Maintain unpaved walkway on 110 Street between 83 Avenue and 85 Avenue as the homeowner likes the existing look and feel

#### 5. Parks & open spaces

##### **What you told us:**

- + There is a desire for a fenced off-leash dog park in Braithwaite Park
- + Connections to parks and green spaces need improvement

#### 6. Garneau School area (86 Avenue)

Options to improve safety for all users and minimize conflicts along 86 Avenue by Garneau School were proposed as this area becomes congested during drop-off and pick-up times. These options include potential bus bays, a shared-use path on the north side of the street, and a new crosswalk near the school.

##### **What you told us:**

- + There is a desire to preserve the trees along 86 Avenue
- + Improve crossings; raised crosswalks are supported
- + Improve conditions for dropping off students
- + Improve crossing at 109 Street and 86 Avenue

## 7. Parking

### What you told us:

- + Access to parking is a concern for residents and their visitors
- + Suggestions to modify and improve parking were identified

## Building a project vision together

Input was collected from the Visioning Survey (November/December 2018), the Ideas Workshop (April 2019), and the Garneau Public Engagement and Communications Committee to help CREATE a draft vision and principles for the Garneau Neighbourhood Renewal.

A vision sets the direction for the future of the neighbourhood. Guiding principles are ideas which inform how the vision is applied to the neighbourhood design.

Attendees at our September 14, 2019 event were able to express their opinions on the vision and principles, which received general support.

## Final vision and principles for Garneau Neighbourhood Renewal

### Vision

Garneau is a unique urban village—a welcoming neighbourhood where a diversity of people live, work, learn, shop, and play, promoting friendly interactions and a high quality of life.

Pedestrian focused, the neighbourhood is safe, inclusive, and accessible for all who walk, bike, drive, and use transit, with inviting public spaces and parks that strengthen its sense of community.

Garneau embraces and enhances its beauty, and builds on its rich historic charm and distinct character.

## Principles

1. To provide a safe and enjoyable pedestrian experience that encourages walking.
2. To design safe, user-friendly roadways and intersections that reduce vehicle speeds and discourage shortcutting.
3. To provide safe connections to neighbourhood amenities and destinations for all modes of travel.
4. To provide infrastructure, street crossings, and public spaces that are accessible and safe for all ages, genders, and mobility levels, and in all seasons.
5. To establish new, and enhance existing, public spaces and parks that provide opportunities for community gathering and recreation.
6. To incorporate urban design that reflects and enhances the neighbourhood's history, beauty, and natural elements.
7. To prioritize on-street parking for residents and their visitors within a reasonable distance from their homes.

## Next steps

In the next step of the Garneau Neighborhood Renewal Process, **Exploring Options and Tradeoffs**, we will share design options along with their benefits and associated tradeoffs. We need your help to **REFINE** our understanding of how these options will improve the future of Garneau.