

PLAYING – PARKS and OPEN SPACES

Proposed changes:

Most of the park spaces throughout Garneau will experience different levels of enhancement to improve usage, beauty and safety. These changes will offer new and different uses of the parks and improve how pedestrians travel through them.

Location	Changes
Braithwaite Park*	Dog park, pathways, tree plantings, boulevard sidewalk
Adair Park*	Plaza, seating, pedestrian connections
City Arts Centre / Bus Turnaround*	Continuous north-south green space, boulevard trees, pedestrian path
Park Space at 107 Street / 86 Avenue*	More open space for multi-use programming

*Click to go directly to details



What we heard about Parks and Open Spaces in Garneau:

People told us that parks, green and open spaces require enhancements and the addition of any new gathering spaces would be welcomed. There is a desire for a fenced off-leash dog park in Braithwaite Park and for improvements to pedestrian connections to parks and green spaces.



Draft Design Input Opportunity

Please review the plans for parks and open spaces on the following pages and tell us what you think using the online survey.

PLAYING – PARKS AND OPEN SPACES

Braithwaite Park

8018 112 Street

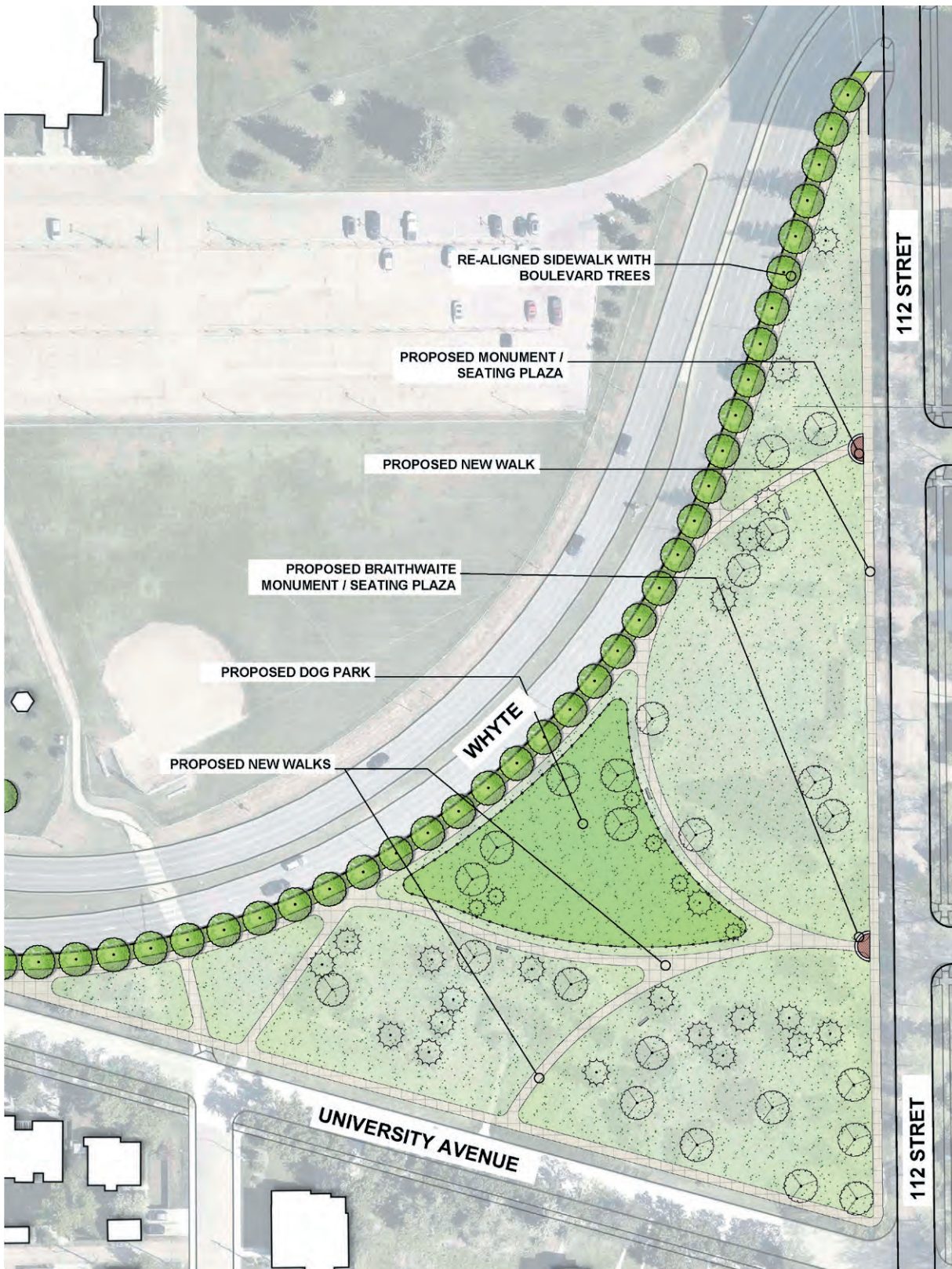
Proposed changes:

A new off-leash dog park will be added and enclosed with fencing and plantings. The remainder of the park will be open for various recreation activities and have new pathways connecting across and through it. Boulevard sidewalks will be added along 112 Street, 82 Avenue and the north side of University Avenue. A row of trees will be planted on the north side of the park along 82 Avenue.

BRAITHWAITE



(continued on next page)

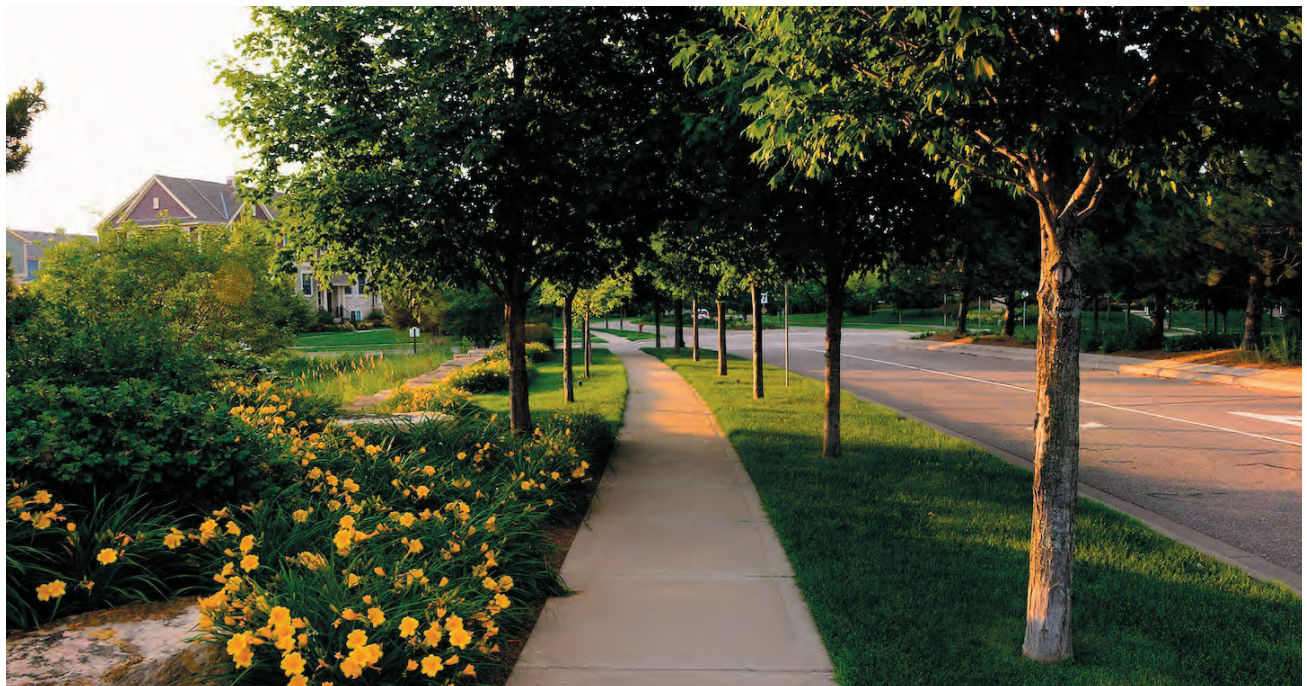


Braithwaite Park

DOG PARK



BOULEVARD TREES – PARK



Braithwaite Park

BLACK WROUGHT IRON FENCE



PARK PATH



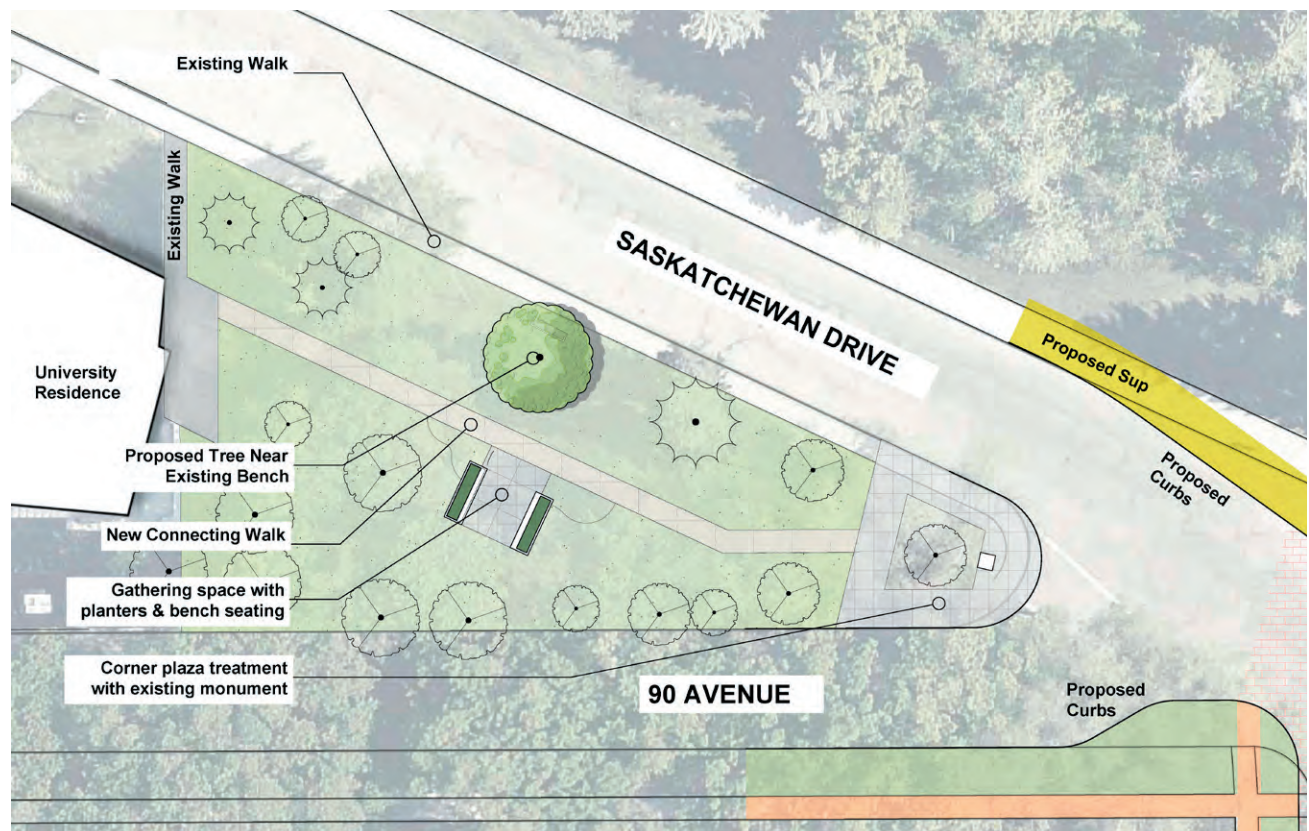
PLAYING – PARKS AND OPEN SPACES

Adair Park

11011 Saskatchewan Drive

Proposed changes:

A designated gathering place in the center of Adair Park. Monument and surrounding plaza area would be upgraded.



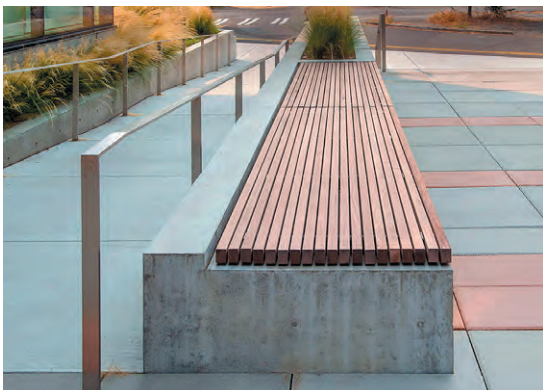
(continued on next page)

Adair Park

SEATING PLAZA



PLANTER BENCHES



PLAYING – PARKS AND OPEN SPACES

City Arts Centre / Bus Turnaround

109 Street / 83 Avenue

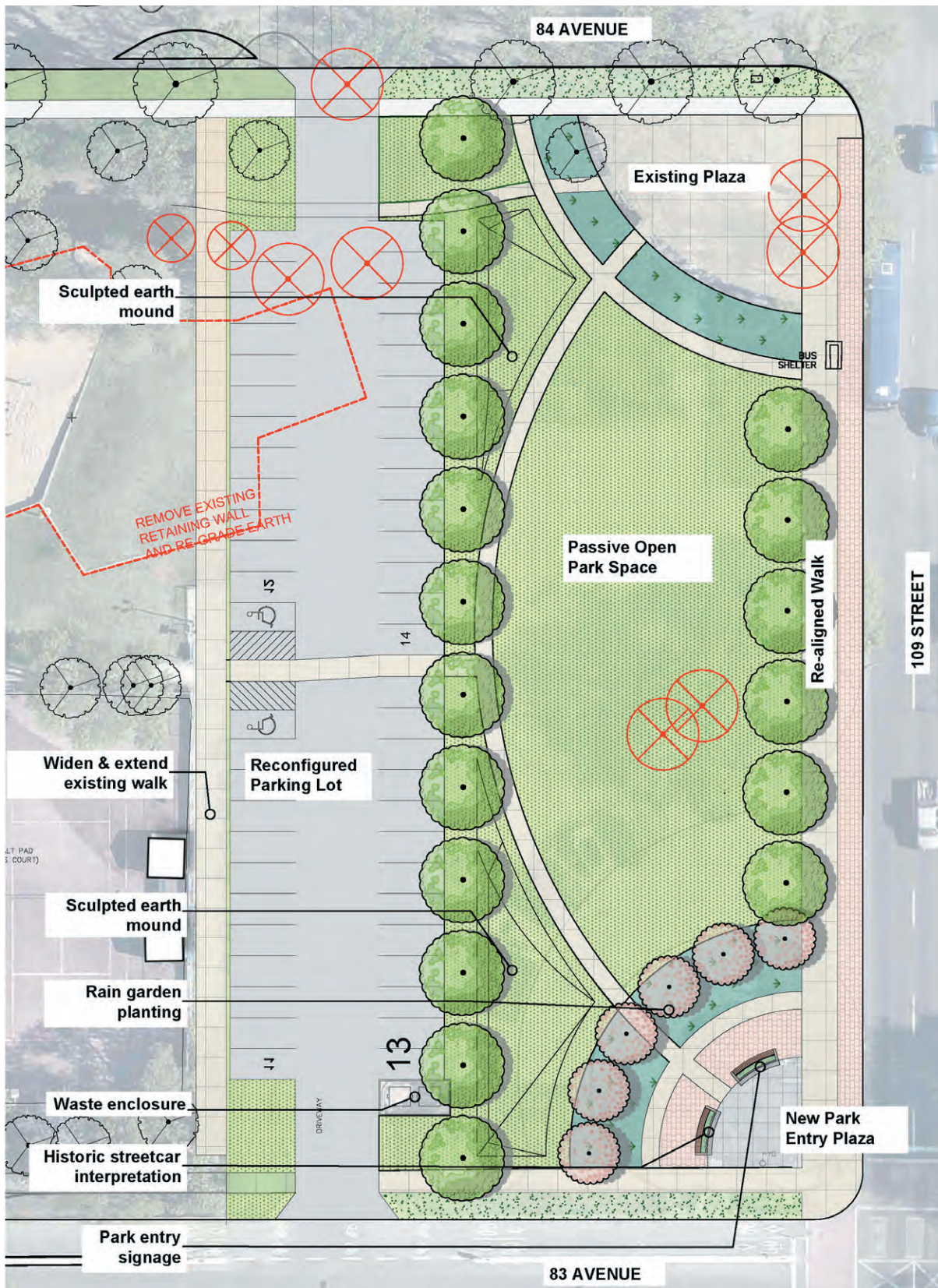
Proposed changes:

A long continuous green space stretching from 83 Avenue to 84 Avenue with a meandering pedestrian path, plaza and boulevard trees planted along 109 Street. The number of parking stalls remain close to existing and a new access off 84 Avenue is added.

VIEW FACING NORTH



(continued on next page)



City Arts Centre

ENTRY PLAZA



RAIN GARDEN



City Arts Centre

SCULPTED GRASS MOUNDS



SCULPTED EARTHWORK



PLAYING – PARKS AND OPEN SPACES

Park Space at 107 Street / 86 Avenue

Proposed changes:

Increasing the available green space will allow for additional amenities and recreation opportunities. A new pedestrian path will provide improved access to the existing playground.



(continued on next page)

Park Space at 107 Street

COMMUNITY GATHERING AREA



MULTI-SPORT SURFACE



LONG COMMUNAL TABLES



Draft Design Input Opportunity

Please review the plans for parks and open spaces on the following pages and tell us what you think using the online survey.