

SIDEWALK IMPROVEMENTS – LORELEI

We need more feedback...

We heard that you...	The design includes...	What do we want you to think about?
<ul style="list-style-type: none"> · like that the improvements will enhance connections and make it easier for people to get around the neighbourhood · have concerns about the the need for additional sidewalks in cul-de-sacs 	<ul style="list-style-type: none"> · the addition of new sidewalks · potential parking restrictions on one side of the road · two-way traffic and one parking lane will be maintained on these streets <p>Key changes from the previous concept:</p> <ul style="list-style-type: none"> · removed additional sidewalks from cul-de-sacs 	<ul style="list-style-type: none"> · how people of all ages and abilities will use the space year round today and in the future · how people will be getting to key destinations in the neighbourhood · the relationship with nearby properties and the street · some trees and landscaping may need to be removed in order to make room for sidewalks · existing parking usage and patterns · new sidewalks will need to be maintained (cleared of snow and ice) by nearby property owners as per the current Snow and Ice Policy



Improving connectivity by having viable options to walk, bike and drive within and surrounding the neighbourhood.



Creating easy access to neighbourhood destinations

Does the concept reflect the vision and guiding principles?

Why do you like or dislike it?

Is there anything missing?



SIDEWALK IMPROVEMENTS – BEAUMARIS

We need more feedback...

We heard that you...	The design includes...	What do we want you to think about?
<ul style="list-style-type: none"> · like that the improvements will enhance connections and make it easier for people to get around the neighbourhood · have concerns about the the need for additional sidewalks in cul-de-sacs 	<ul style="list-style-type: none"> · the addition of new sidewalks · potential parking restrictions on one side of the road · two-way traffic and one parking lane will be maintained on these streets <p>Key changes from the previous concept:</p> <ul style="list-style-type: none"> · the addition of a boulevard with planting along 158 Avenue and 106 Street 	<ul style="list-style-type: none"> · how people of all ages and abilities will use the space year round today and in the future · how people will be getting to key destinations in the neighbourhood · the relationship with nearby properties and the street · some trees and landscaping may need to be removed in order to make room for sidewalks · existing parking usage and patterns · new sidewalks will need to be maintained (cleared of snow and ice) by nearby property owners as per the current Snow and Ice Policy



Improving connectivity by having viable options to walk, bike and drive within and surrounding the neighbourhood.



Creating easy access to neighbourhood destinations

Does the concept reflect the vision and guiding principles?

Why do you like or dislike it?

Is there anything missing?



SHARED-USE PATH IMPROVEMENTS

We heard that you...	The design includes...
<ul style="list-style-type: none">· like that the shared-use paths will enhance connections and make it easier for people to get around the neighbourhood· like that the shared-use paths will make better use of existing green space (ie. Green Corridor)· like that the shared-use path will make it easier to access sports fields in Lorelei Park	<ul style="list-style-type: none">· the addition of new and re-constructed shared-use paths throughout the neighbourhood to make it easier to walk and bike· other amenities to provide areas for people to rest along the shared-use paths including seating areas, waste receptacles and lighting (More details on the location of these amenities are provided in the refined designs) <p>Key changes from the previous concept:</p> <ul style="list-style-type: none">· removal of the Castle Downs Road shared-use path concept

Does the concept align with our vision and guiding principles?

Yes

No

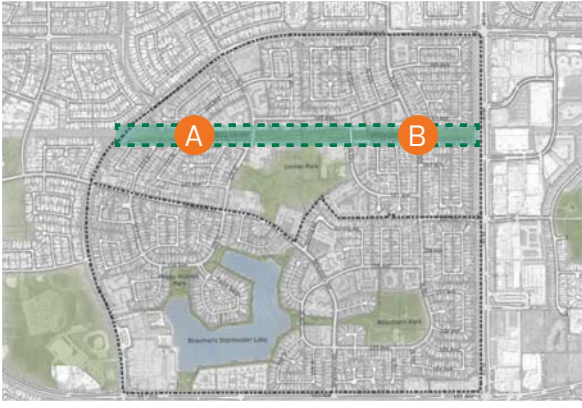
Why?

Is there anything else we should think about as we finalize the designs?

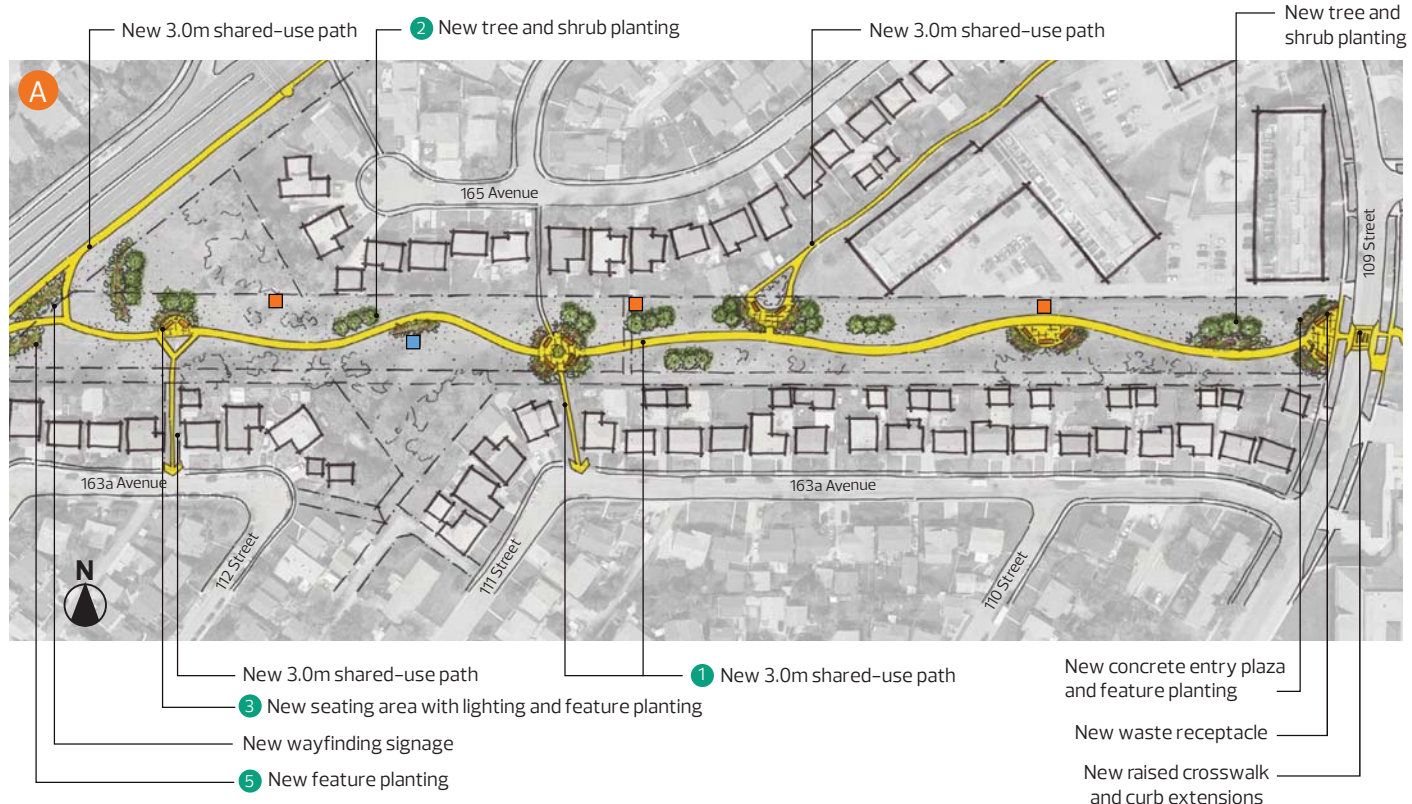
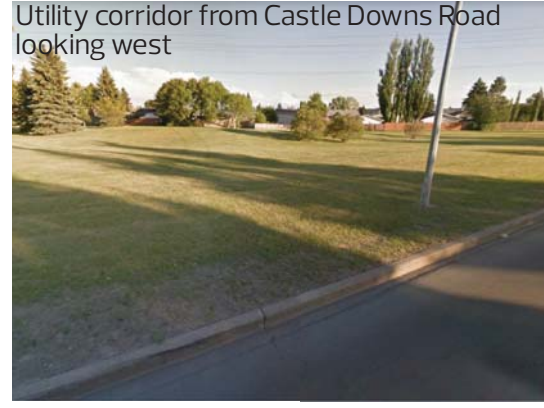


GREEN CORRIDOR

Refined design location



Existing condition



■ Transmission tower (maintain 10m clearance)
■ Power pole

Designs are subject to approvals and funding.

Note: Feature planting is intended to enhance green space and should include flowering trees where possible, perennials and annuals.

Design element examples



SHARE YOUR VOICE
SHAPE OUR CITY

Edmonton



GREEN CORRIDOR

We heard that you...	The design includes...
<ul style="list-style-type: none">· like that the shared-use path will increase usage of the green space and enhance connections within and surrounding the neighbourhood· like the dog park because it will be well used, but have concerns that it may be too small as a fenced dog park· have concerns about traffic noise from 97 Street· want accessible space for people who bike and walk when crossing the streets that intersect the green corridor· believe that lighting needs to be improved	<ul style="list-style-type: none">· amenities including lighting, seating and waste receptacles to make the space safer and more accessible· shared-use path to enhance east-to-west connections· new shrub and tree plantings to beautify the corridor· off-leash dog park to support the corridor as a destination <p>Key changes from the previous concept:</p> <ul style="list-style-type: none">· the removal of the fence for the dog park as there is an existing berm that acts as a natural barrier to 97 Street <p><i>*Please note that this is a powerline corridor and that requirements and regulations from Altalink may impact the final design.</i></p>

Does the concept align with our vision and guiding principles?

Yes

No

Why?

Is there anything else we should think about as we finalize the designs?



LORELEI PARK

We heard that you...	The design includes...
<ul style="list-style-type: none">· like that the new east-to-west pathway will make it easier to access the sports fields· like the seating, lighting, planting, waste receptacles and the upgraded playground· want sight lines to be considered when planting trees within the park· want drainage to be considered for pathway improvements	<ul style="list-style-type: none">· amenities including lighting, seating and waste receptacles to make the space safer and more accessible· new trees and shrubs to beautify the park· an east-to-west shared-use path and reconstructed north-to-south shared-use path to enhance connections· curb extensions and raised crosswalks to discourage speeding, improve sight lines and make it easier to cross the street· an upgraded playground to support the park as a destination <p><i>*Please note that upgrades to the playground would need to be led by the community.</i></p> <p>Key changes from the previous concept:</p> <ul style="list-style-type: none">· the addition of raised crosswalks along 103 Street and 109 Street to make it easier to access the park

Does the concept align with our vision and guiding principles?

Yes

No

Why?

Is there anything else we should think about as we finalize the designs?

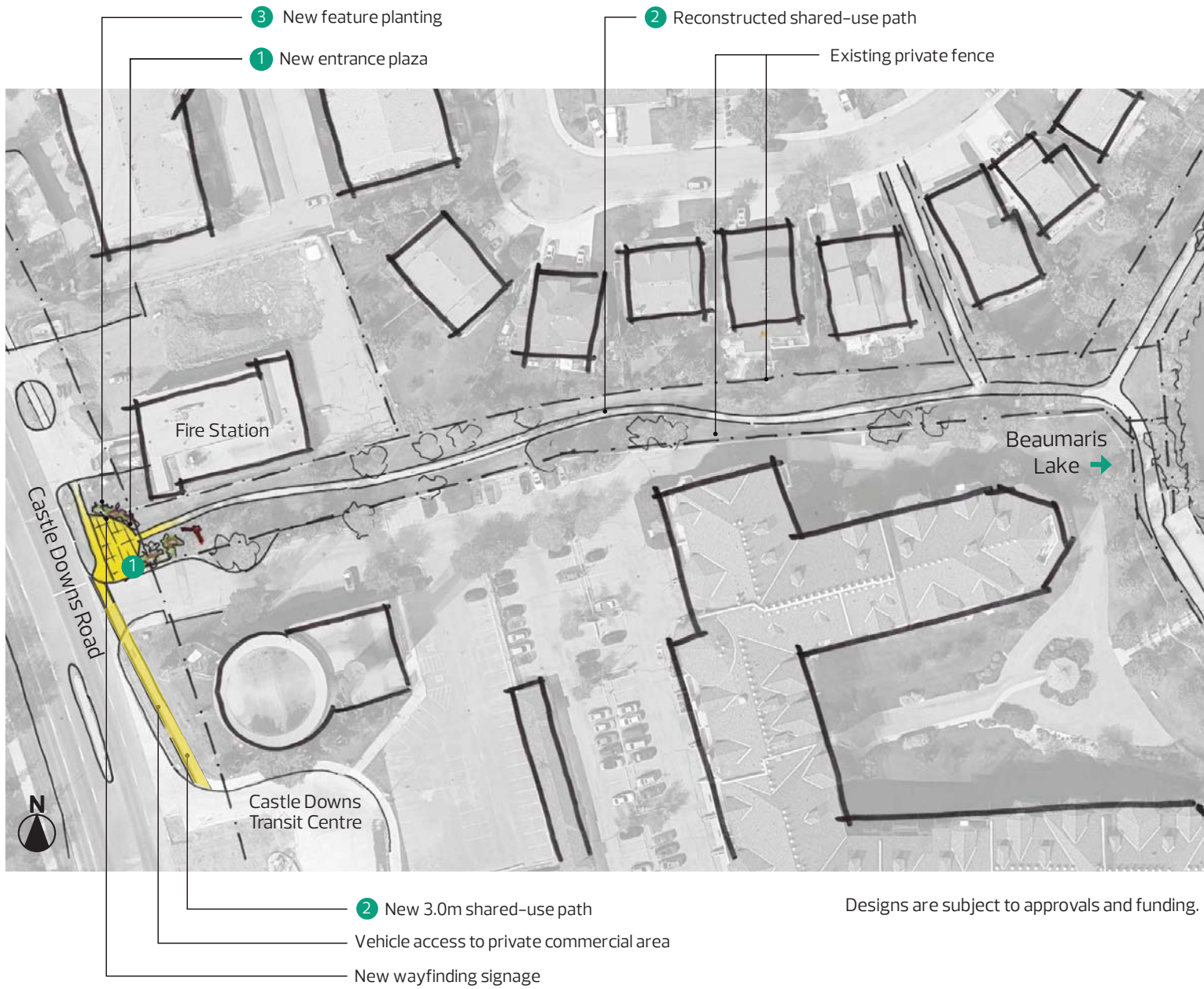


CASTLE DOWNS TO BEAUMARIS LAKE

Refined design location



Existing condition



Design element examples



CASTLE DOWNS TO BEAUMARIS LAKE

We heard that you...

- like that the improvements will make the pathway more accessible for users (including people from the nearby seniors' living facility) and will enhance the connection from Beaumaris Lake to the YMCA on the other side of Castle Downs Road

The design includes...

- an entrance plaza with plantings to beautify the connection to Beaumaris Lake
- an extension to the shared-use path along Castle Downs Road to enhance the connection to Castle Downs Transit Centre
- a reconstructed shared-use path to enhance the connection to Beaumaris Lake

Key changes from the previous concept:

- the addition of the extension to the shared-use path to connect with the Transit Centre

Does the concept align with our vision and guiding principles?

Yes

No

Why?

Is there anything else we should think about as we finalize the designs?



BEAUMARIS PARK TO BEAUMARIS LAKE

Refined design location

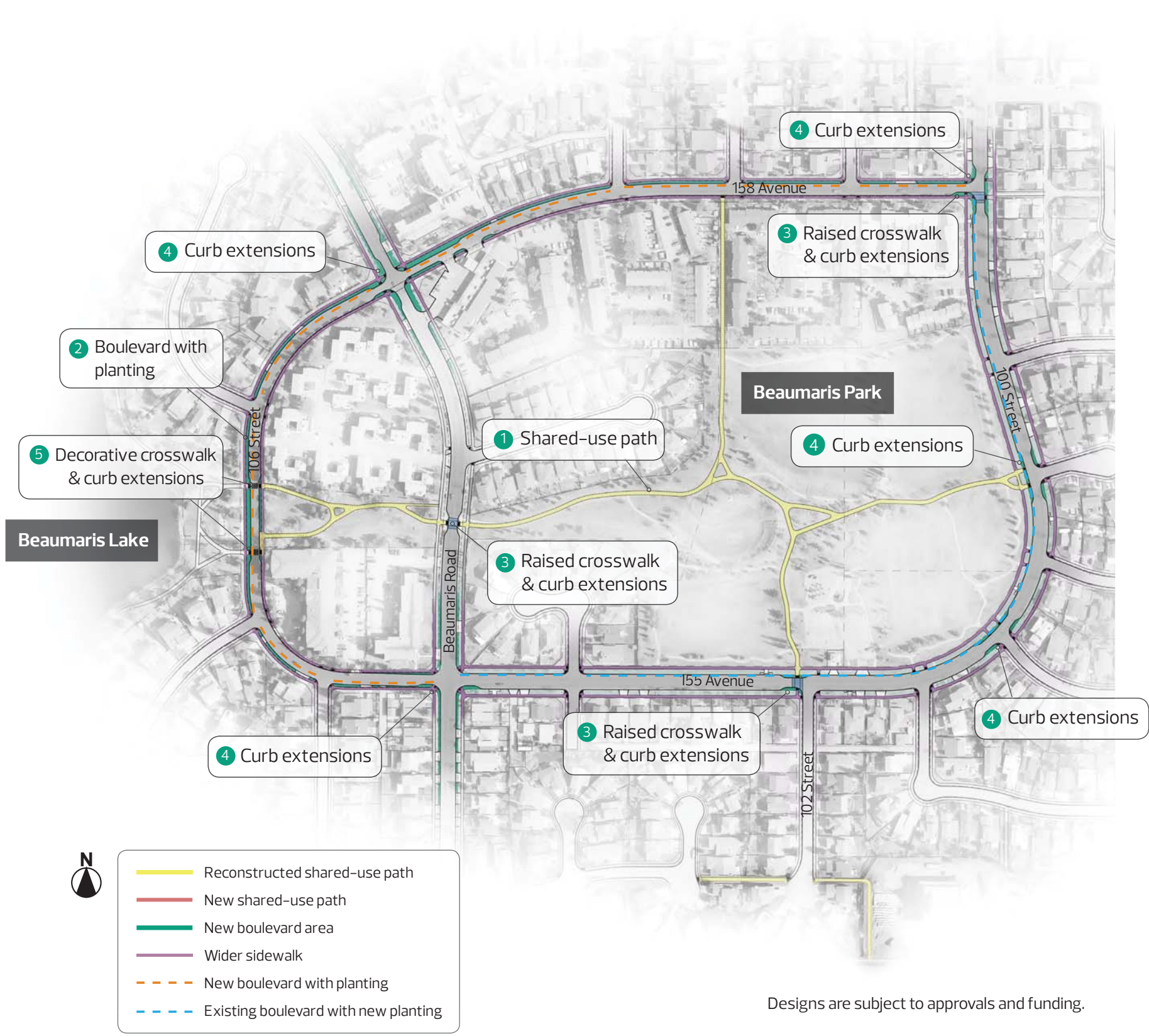


Existing condition

106 Street looking north



Beaumaris Park entrance near 102 Street looking north



Designs are subject to approvals and funding.

Design element examples



SHARE YOUR VOICE
SHAPE OUR CITY



BEAUMARIS PARK TO BEAUMARIS LAKE

We heard that you...	The design includes...
<ul style="list-style-type: none">· like that the improvements make the area more attractive and well-connected· like that the improvements could reduce the amount of crime near the lake by making it a more welcoming space· like the decorative crossing and boulevard trees to enhance the entrance to Beaumaris Lake· have concerns about the removal of parking in front of Beaumaris Lake access	<ul style="list-style-type: none">· curb extensions and raised crosswalks to discourage speeding, improve sight lines and make it easier to cross the street· boulevard with trees and decorative crosswalks to discourage speeding and provide a more welcoming entrance to Beaumaris Lake· a reconstructed shared-use path to enhance connections <p>Key changes from the previous concept:</p> <ul style="list-style-type: none">· the addition of curb extensions at 158 Avenue and 100 Street <p><i>*Please note that amenities like lighting, seating and waste receptacles are being considered near the lake through the Beaumaris Lake Rehabilitation Project.</i></p>

Does the concept align with our vision and guiding principles?

Yes

No

Why?

Is there anything else we should think about as we finalize the designs?



BEAUMARIS ROAD – EAST

Refined design location

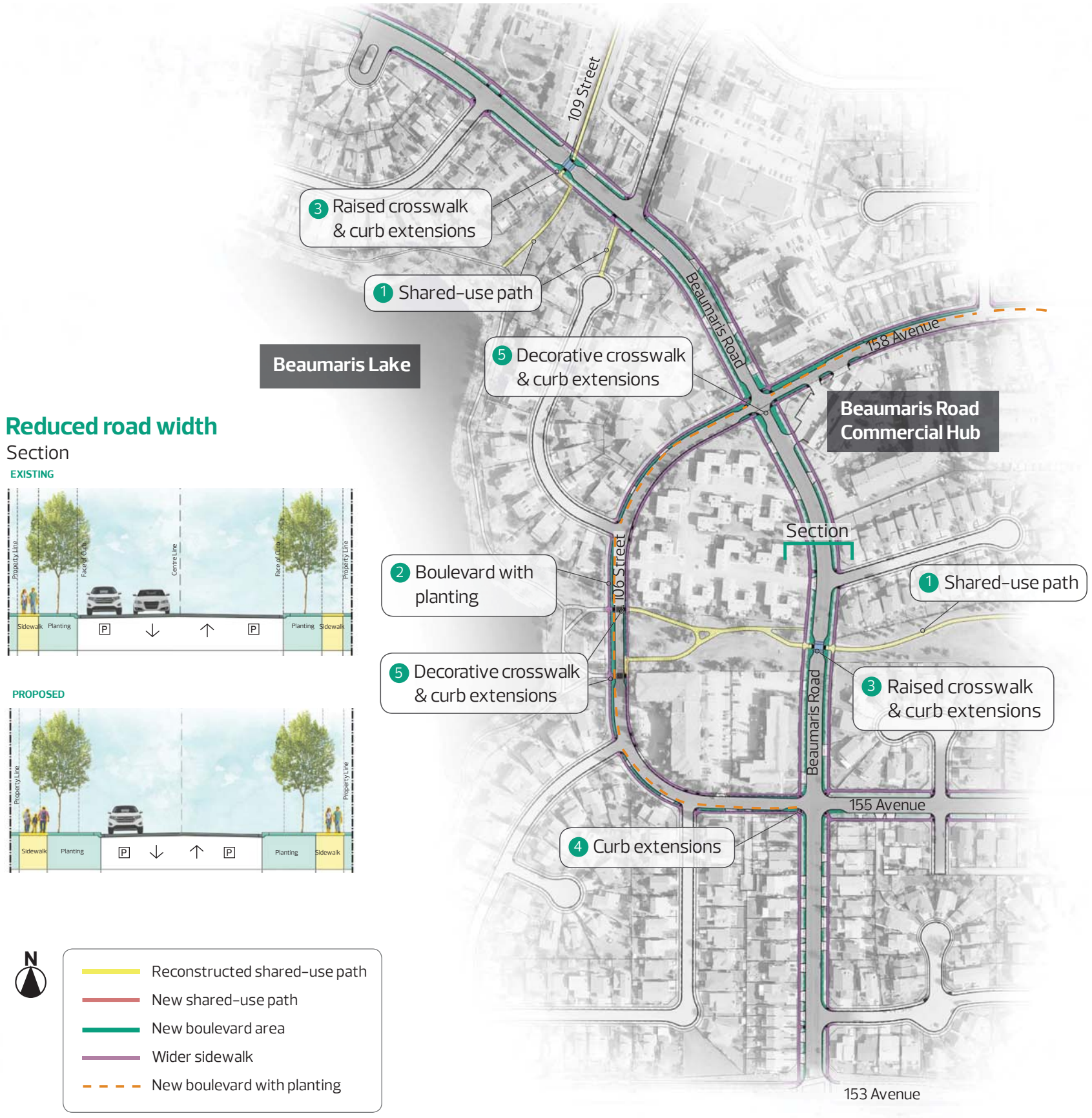


Existing condition

Beaumaris Road looking southeast

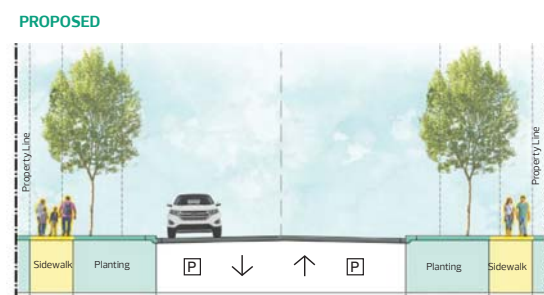
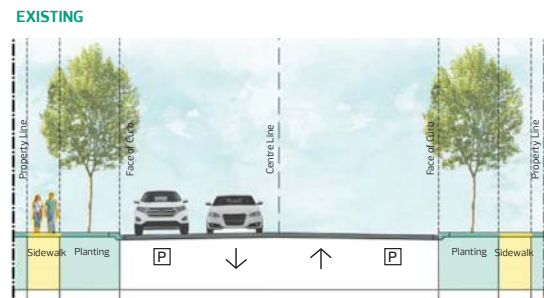


Beaumaris Road looking north



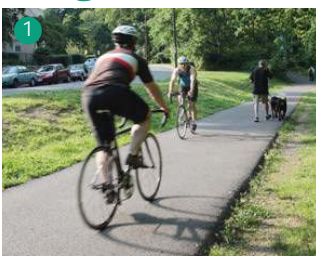
Reduced road width

Section



Designs are subject to approvals and funding.

Design element examples



**SHARE YOUR VOICE
SHAPE OUR CITY**

Edmonton

BEAUMARIS ROAD – WEST

Refined design location



Existing condition

Beaumaris Road looking east



Beaumaris Road near Lorelei School looking west



Design element examples



SHARE YOUR VOICE
SHAPE OUR CITY

Edmonton

BEAUMARIS ROAD

We heard that you...

- like the boulevard with trees to beautify the street
- like the curb extensions and raised crosswalks to discourage speeding and improve safety for people who walk
- have concerns that the curb extensions will make the road too narrow and impact winter maintenance
- have concerns about limiting driveway access along Beaumaris Road south of 155 Avenue
- want crossing improvements at the Beaumaris Road and 155 Avenue intersection

The design includes...

- a wider grassy boulevard and reduced road width to discourage speeding and create a larger natural buffer between the sidewalk and street
- curb extensions and a raised crosswalk to improve sight lines and make it easier to cross the street
- a decorative crosswalk near 158 Avenue to support the commercial hub as a destination
- a wider sidewalk on both sides of the street to make it easier for people who walk to get around

Key changes from the previous concept:

- the removal of the proposed rehabilitated entrance signage

**Please note that the redesign of Beaumaris Road will not limit driveway access and will ensure sufficient road widths are provided.*

Does the concept align with our vision and guiding principles?

Yes

No

Why?

Is there anything else we should think about as we finalize the designs?



109 STREET CORRIDOR

Refined design locations



Existing condition

109 Street looking north

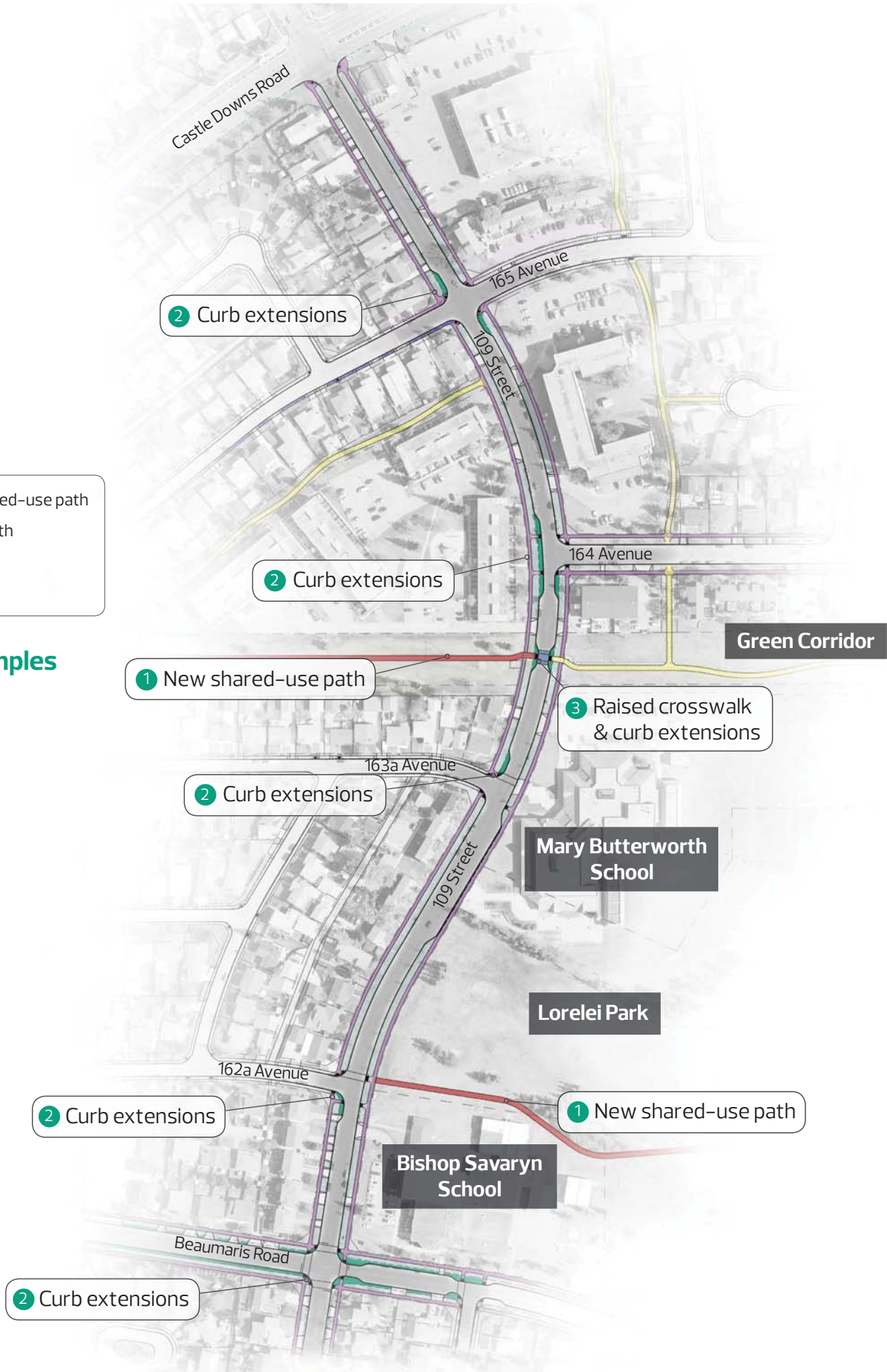


109 Street looking south



- Reconstructed shared-use path
- New shared-use path
- New boulevard area
- Wider sidewalk

Design element examples



Designs are subject to approvals and funding.

SHARE YOUR VOICE
SHAPE OUR CITY

Edmonton



109 STREET CORRIDOR

We heard that you...

- have concerns about speeding along 109 Street
- have concerns about safety for people crossing the street

The design includes...

- curb extensions and a raised crosswalk to discourage speeding, improve sight lines and make it easier to cross the street
- a new sidewalk between 164 Street and 165 Street to enhance connections and make it easier to get around

Key changes from the previous concept:

- the addition of a raised crosswalk along 109 Street to cross the green corridor

Does the concept align with our vision and guiding principles?

Yes

No

Why?

Is there anything else we should think about as we finalize the designs?

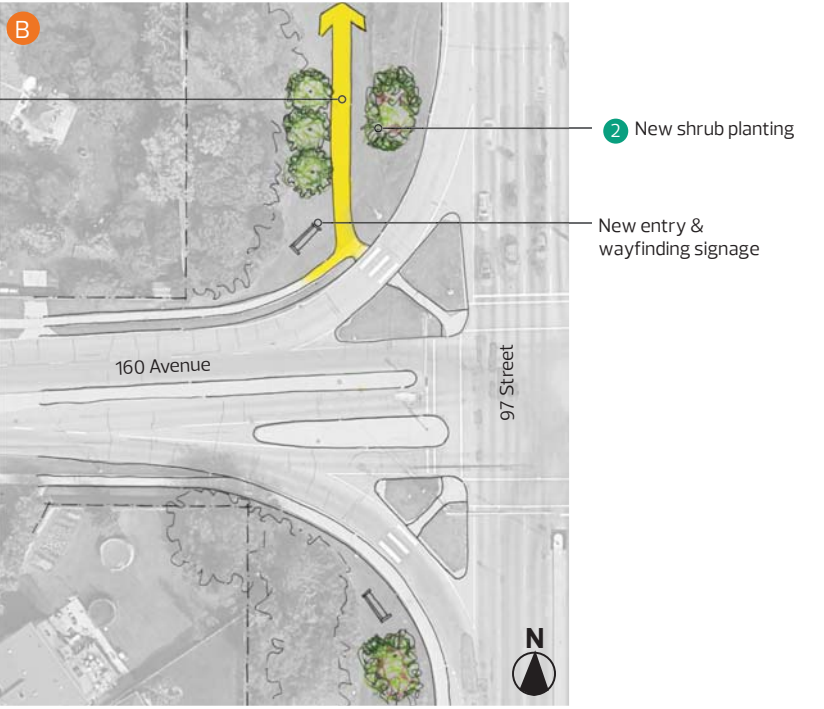
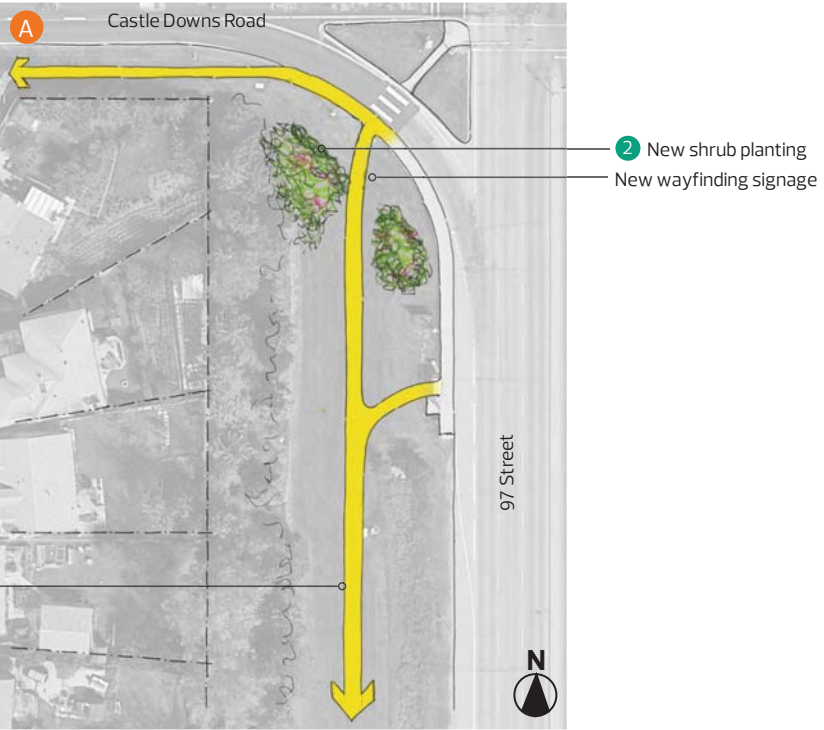


97 STREET SHARED-USE PATH CONNECTION

Refined design location

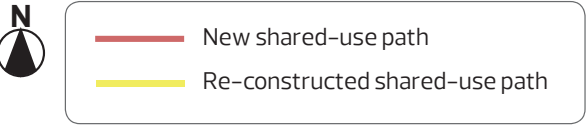


Existing condition



Designs are subject to further technical review, approvals and funding.

Design element examples



SHARE YOUR VOICE
SHAPE OUR CITY



97 STREET SHARED-USE PATH CONNECTION

We heard that you...	The design includes...
<ul style="list-style-type: none">· like that the path improves walkability and makes it easier and safer for people to walk, bike and stay active· believe that the shared-use path should be extended south of 160 Avenue on the west side of 97 Street	<ul style="list-style-type: none">· shared-use path along the west side of 97 Street to enhance the connection· entry features and wayfinding signage at 97 Street and 160 Avenue to improve the look of the entrance <p>Key changes from the previous concept:</p> <ul style="list-style-type: none">· the addition of a shared-use path connection to 97 Street near 162 Avenue <p><i>*Please note that the shared-use path could not be extended to the south of 160 Avenue due to technical constraints. It also may not be possible to connect the shared-use path to 97 Street near 162 Avenue due to technical constraints. This section is currently under review and an update will be provided at the next public event.</i></p>

Does the concept align with our vision and guiding principles?

Yes

No

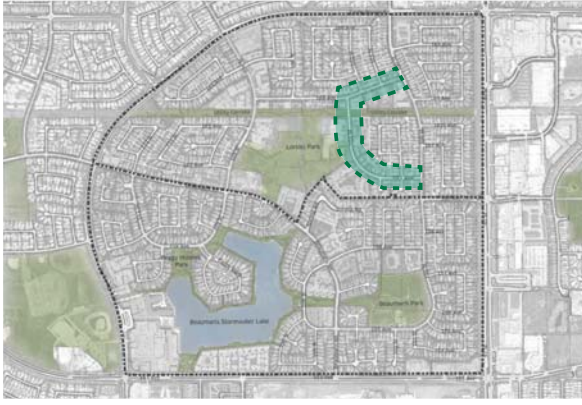
Why?

Is there anything else we should think about as we finalize the designs?

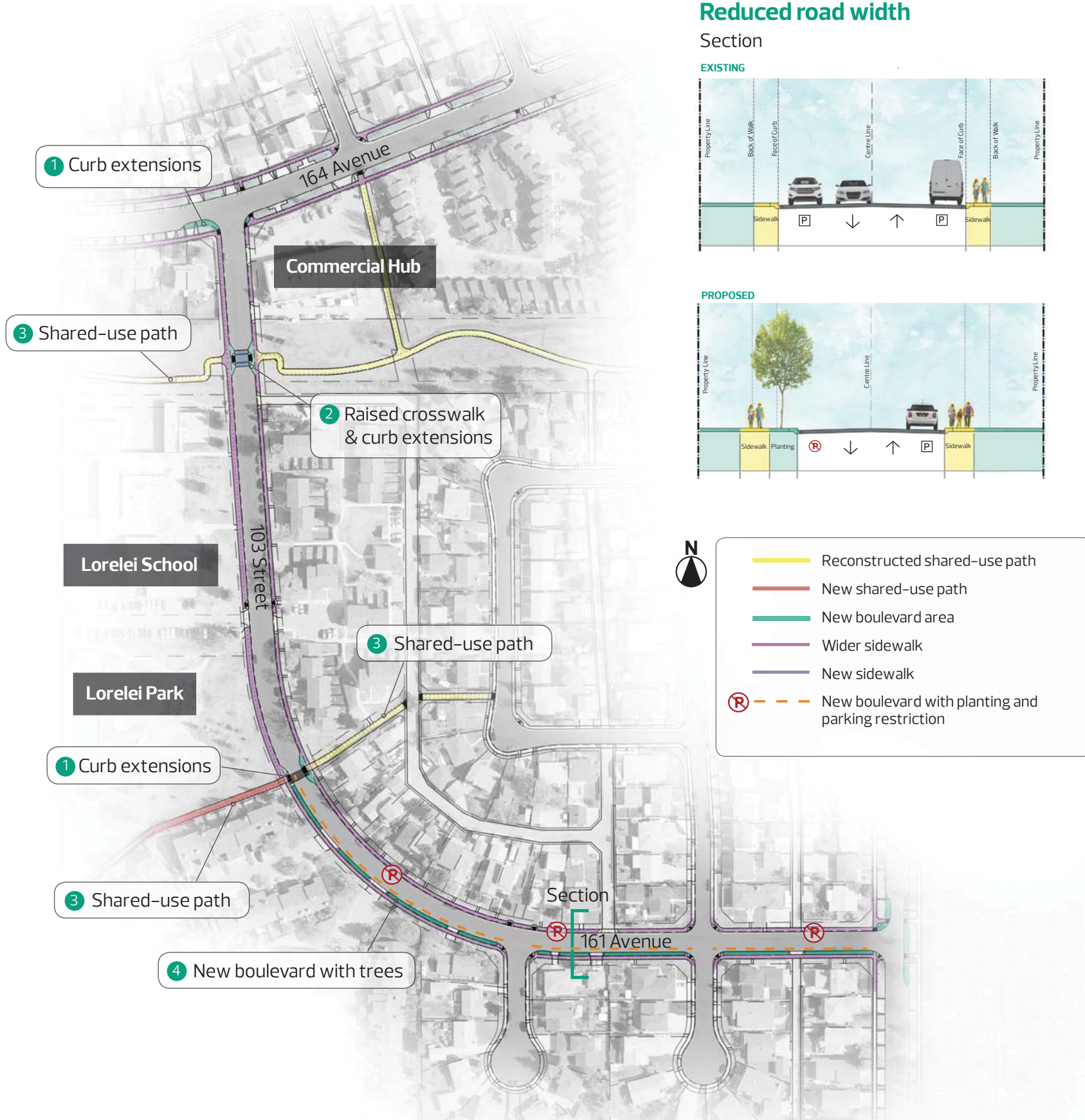


164 AVENUE AND 103 STREET DESIGN

Refined design location



Existing condition



Designs are subject to approvals and funding.

Design element examples



SHARE YOUR VOICE
SHAPE OUR CITY

Edmonton



164 AVENUE AND 103 STREET DESIGN

We heard that you...	The design includes...
<ul style="list-style-type: none">· believe that access should be improved to the commercial hub and other key destinations in the neighbourhood· like the curb extensions to discourage speeding and improve safety	<ul style="list-style-type: none">· curb extensions and a raised crosswalks to discourage speeding, improve sight lines and make it easier to cross the street, especially near Lorelei School· boulevard with trees and reduced road width to decrease speeding and beautify the street· 2.5 m wide sidewalk in front of Lorelei School to enhance the connection· parking restrictions along the south side of the road to maintain two-way travel <p>Key changes from the previous concept:</p> <ul style="list-style-type: none">· the removal of curb extensions at 164 Avenue and 102 Street· the removal of the decorative crosswalk at 164 Avenue and 103 Street <p><i>*Please note additional improvements may be undertaken for the commercial hub through other City programs.</i></p>

Does the concept align with our vision and guiding principles?

Yes

No

Why?

Is there anything else we should think about to finalize the design?



100 STREET IMPROVEMENTS

Refined design location



Existing condition

100 Street looking south



100 Street looking north



Design element examples



Designs are subject to approvals and funding.

SHARE YOUR VOICE
SHAPE OUR CITY

Edmonton



100 STREET IMPROVEMENTS

We heard that you...

- have concerns about speeding along 100 Street and traffic safety at the 158 Avenue intersection

The design includes...

- curb extensions to improve sight lines and discourage speeding and make it easier to cross the street
- re-constructed and new shared use paths to enhance connections

Key changes from the previous concept:

- the addition of curb extensions along 100 Street at 165 Avenue, 162 Avenue and 158 Avenue

Does the concept align with our vision and guiding principles?

Yes

No

Why?

Is there anything else we should think about as we finalize the designs?

