

December 11, 2020

City of Edmonton
DEVELOPMENT SERVICES (Edmonton Tower)
2nd Floor, 10111 – 104 Avenue NW
EDMONTON, AB T5J 0J4



Re: 345971146-001 DC2 Documents, Shadow Study

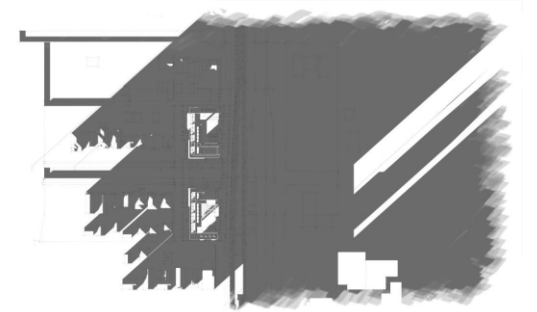
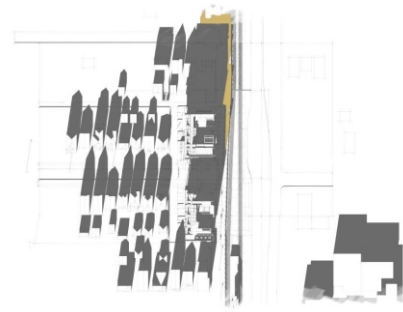
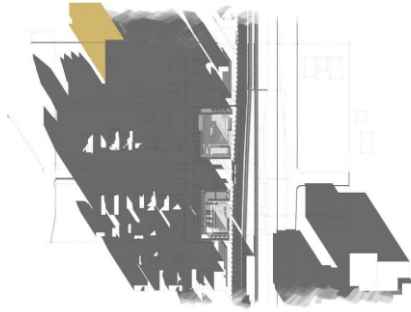
It has been brought to our attention that the images presented in the Shadow Study had the following error; the latitude for the model was not set correctly.

This is solely our fault and we apologize, the model was copied and pasted into a new file for the purposes of conducting the study but did not bring the proper "Geo-location" with it. We've since reinserted the Geo-location and there is a difference in the length of the shadows. By no means was this misrepresentation deliberate or even noticed by our staff, members of the team, or the City.

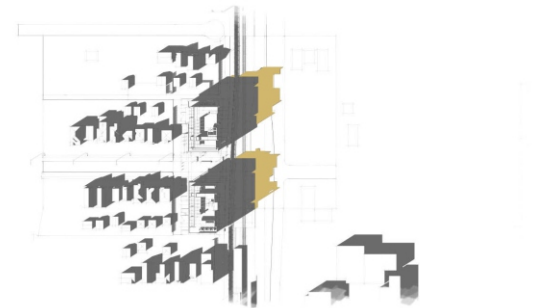
Once again we apologize for any confusion this may have caused and have resubmitted this document to the City to be uploaded and replace the incorrect document.

Keith McIntyre AAA

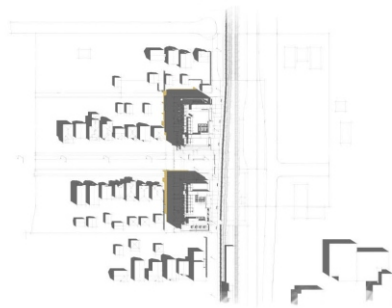
DECEMBER 21



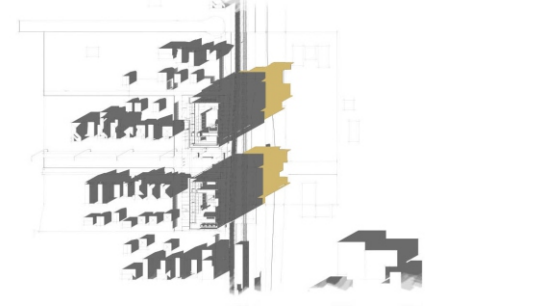
MARCH 20



JUNE 20



SEPTEMBER 22



9:00 AM

12:00 PM

3:00 PM

submitted to:



Shadow Study

The ORANGE on the site plans indicates the extra cast shadow of a 6 storey building vs 4 storey

submitted by:

