



What We Heard Report Eastwood and Elmwood Park Neighbourhood Renewal

SHARE YOUR VOICE
SHAPE OUR CITY

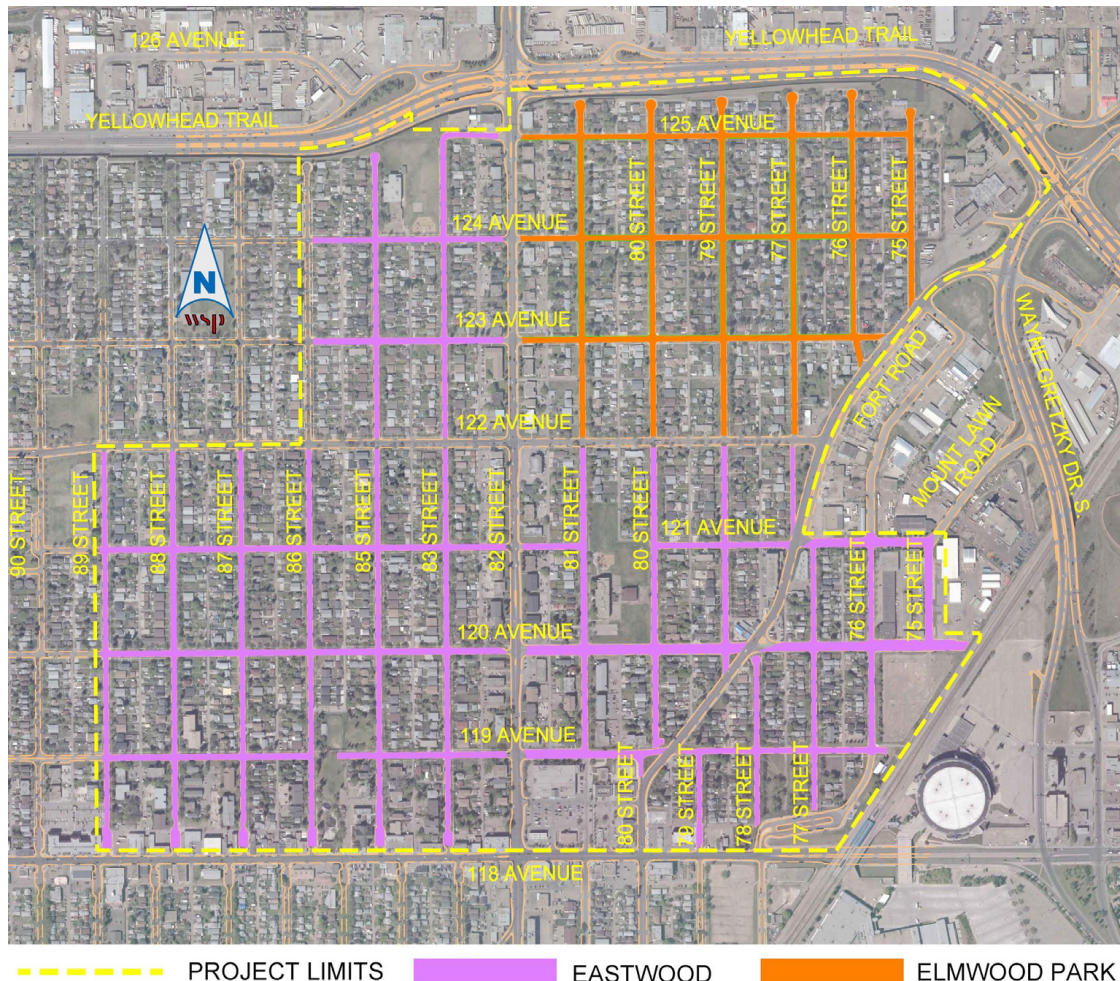
Edmonton

What We Heard Report

Eastwood and Elmwood Park Neighbourhood Renewal Visioning and Local Knowledge

PROJECT BACKGROUND

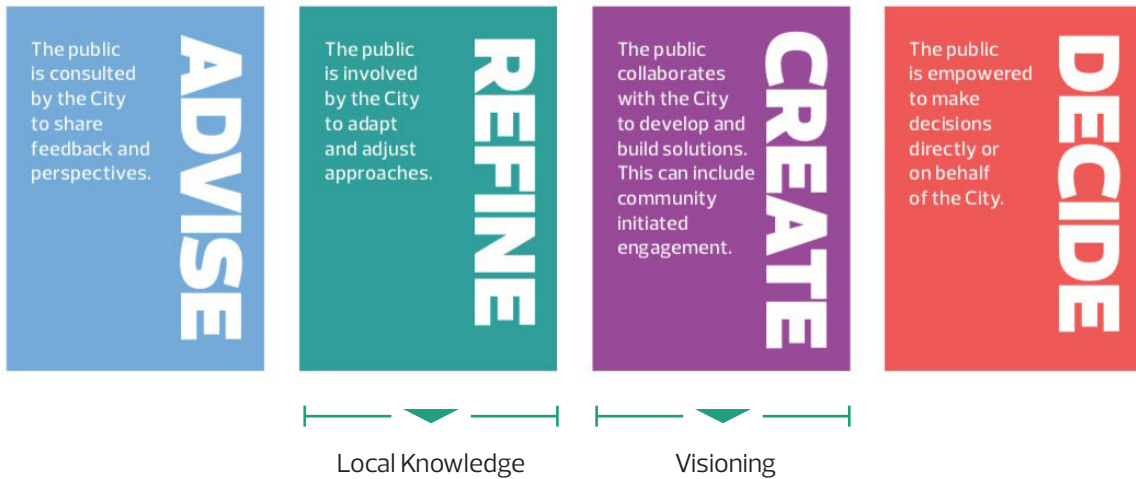
Beginning in 2020, Eastwood and Elmwood Park will experience Neighbourhood Renewal. Through the City of Edmonton's Building Great Neighbourhoods and Open Spaces branch, the Neighbourhood Renewal program will rehabilitate roads, replace street lights, curb and gutters, repair sidewalks, and connect missing sidewalk links where possible in Eastwood and Elmwood Park. Cost sharing opportunities will be made available through the Local Improvement process for sidewalk reconstruction and decorative streetlight upgrades in the neighbourhood. Other opportunities to improve parks and public spaces will also be explored.



ENGAGEMENT SPECTRUM

The Public Engagement spectrum is a tool that explains the four roles the public can play when they participate in City of Edmonton Public Engagement activities. As we move forward in the spectrum, there is an increasing level of public influence and commitment from the City and the public.

The subjects we have engaged on are shown on the spectrum below, reflecting the level of public influence at each level.



Community Engagement Advisory Group

In order to ensure we are approaching our engagement with the neighbourhood in a way that meets the needs and interests of the community, we will be forming a Community Engagement Advisory Group (CEAG) to help refine the City's approach to engagement throughout the life cycle of the project. The CEAG provides input on the project public engagement plan by representing the interests and needs of the community.

For more information regarding the CEAG, please visit edmonton.ca/BuildingEastwoodElmwoodPark.

WHERE WE ARE IN THE DECISION MAKING PROCESS

We have created a road map (below) to help you understand the steps of the renewal process and how you can participate. At each step, we will tell you what the purpose is and how your input will inform the decisions being made. We commit to report back on how we used your input through What We Heard reports and at public engagement events. Please note that steps may happen concurrently and out of sequence. We are only at the beginning of the public engagement process. The first few public engagement opportunities combined the following stages: Building a Project Vision Together and Exploring Opportunities.

Road Map to Building Great Neighbourhoods



LEGEND

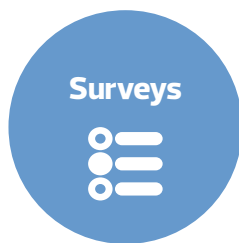
| | | | | |
|--|---------------|--------------|-------------|---------------|
| Public Engagement and Communications Opportunities | Concept Phase | Design Phase | Build Phase | Operate Phase |
|--|---------------|--------------|-------------|---------------|

WHAT WE ASKED AND HOW WE ASKED

The Eastwood/Elmwood Park Neighbourhood Renewal project team organized the following opportunities for the public to help create a draft vision and guiding principles for the project and help refine the project team's understanding of the improvements needed in the area.



- ▶ A public workshop was held **December 1, 2018** at the Eastwood Community League.
 - Attendees participated in a guided neighbourhood walk around Eastwood or Elmwood Park to identify opportunities for improvement.
 - During the afternoon attendees participated in a neighbourhood assessment and visioning workshop where they completed mapping and sketching exercises.



- ▶ Two online surveys gathering input on Visioning and Local Knowledge were available for the public to complete from **December 1, 2018 to January 15, 2019**.



- ▶ A community pop-up was held at St. Gerard School Christmas Concert on **December 12, 2018** to promote the online surveys.
 - Students from grades 4 to 6 also answered questions about Visioning and Local Knowledge in a classroom handout.
- ▶ A second community pop-up was held at Safeway Coliseum on **January 10, 2019** where shoppers completed the online surveys while in the store.
- ▶ A pop-up event on **January 31, 2019** at Crystal Kids allowed youth to give feedback through both a handout and table exercises.

Over 150 participants!

WHAT WE HEARD

Four themes emerged across all engagement opportunities:



Exploring Opportunities To Shape Your Neighbourhood

Residents shared feedback on areas of City-owned land and opportunities to enhance the neighbourhood in coordination with the neighbourhood renewal project. We plan to use this feedback to help inform the draft designs for the neighbourhoods. Following are some of the common themes that emerged from comments by residents of both Eastwood and Elmwood Park:

| | |
|--|--|
|  <p>Streets and Connections Pedestrian Connections</p> <p>STREETS & CONNECTIONS</p> | <ul style="list-style-type: none"> + In poor condition: potholes, cracks, drainage issues, etc. + Inadequate snow clearing + Awkward one-way to two-way transitions + Visibility issues (e.g. unmarked crossings and intersections) + Missing or poor condition crosswalks, sidewalks and bike lanes result in unsafe conditions + Consider the parking needs of residents and non-residents + Unclear or missing traffic signage + Inadequate way finding and directional signs |
|  <p>Illicit/Unwanted Activity</p> <p>SAFETY</p> | <ul style="list-style-type: none"> + People sleeping in public spaces + Need to reduce violent and non-violent crime in the area |
|  <p>Accessibility for All Ages and Abilities</p> <p>ACCESSIBILITY</p> | <ul style="list-style-type: none"> + Need for curb ramps, accessible building entrances, and lighting improvements + Fences obstructing through access near public spaces |
|  <p>Parks Underused Facilities</p> <p>FACILITIES & OPEN SPACES</p> | <ul style="list-style-type: none"> + Need for improved facilities (e.g. benches, landscaping, garbage bins, drainage, and lighting) + Potential for permanent, in-ground community garden + Buildings, parks, and other spaces that are not used to full potential (e.g. baseball diamond) + Increase programming or awareness of neighbourhood events and activities |

Building a Project Vision Together

Input was collected from all of the engagement activity participants to help **CREATE** a draft vision and guiding principles for Eastwood and Elmwood Park. A vision is a short description that sets the direction for the community's future liveability. Guiding Principles are ideas which inform how the vision is applied to the neighbourhood design. Neighbourhood walk participants were asked whether or not there should be two vision statements, one for each community. The shared values amongst residents justified one vision statement to represent both communities.

Visioning

How do you want to see or experience your neighbourhood in the future?



Draft Vision Statement and Guiding Principles

Vision

Eastwood and Elmwood Park are proud to be safe, prosperous, and self-reliant neighbourhoods. Many generations will have the opportunity to set down roots in this quiet and inviting area of Edmonton, known for its vibrant parks and greenery.

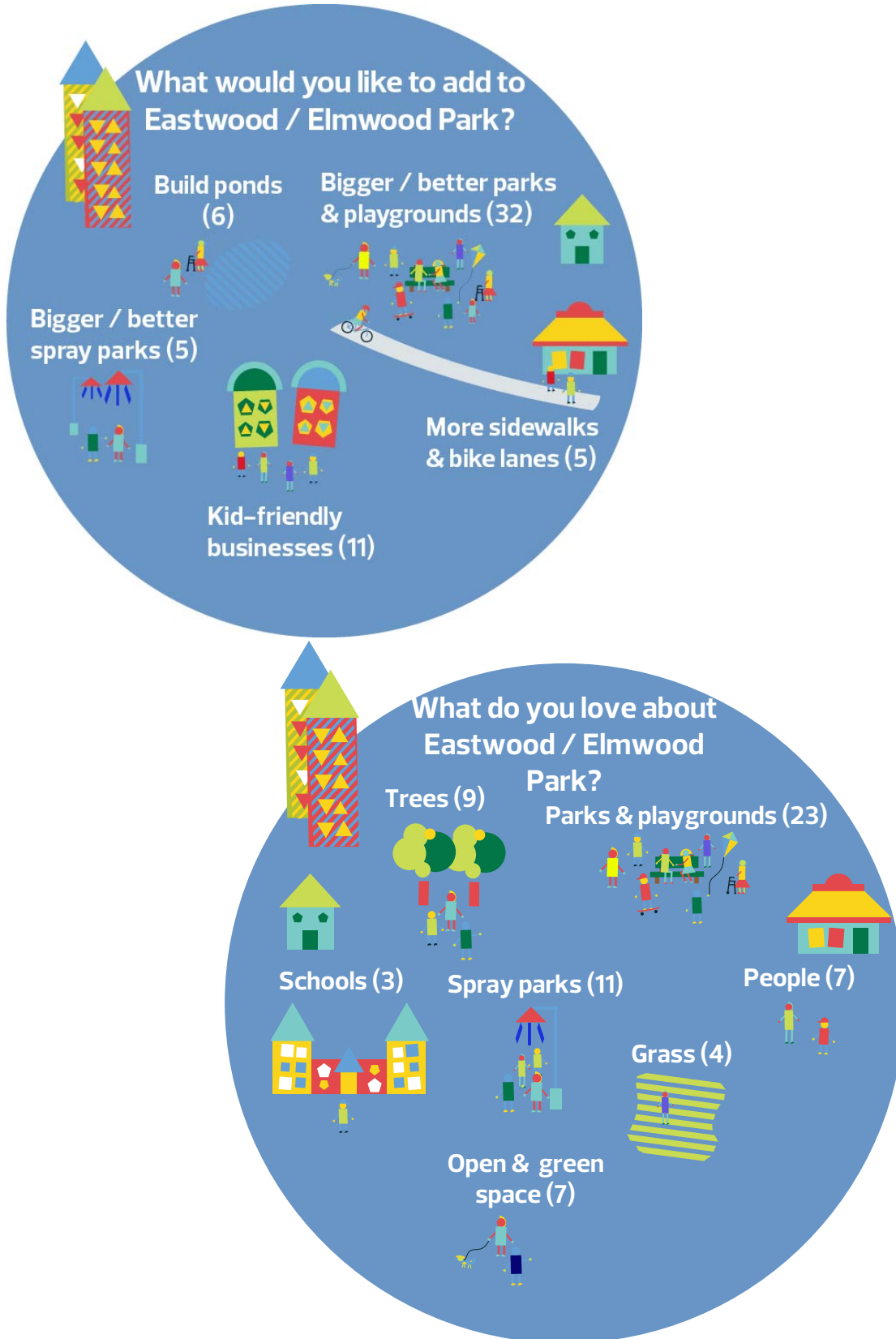
Guiding Principles

Eastwood and Elmwood Park:

- + are safe areas where residents feel comfortable walking throughout the neighbourhoods at any time of day.
- + residents have access to a range of amenities, businesses, and resources located within the community.
- + feature a natural beauty within their parks, open spaces, and a community garden.
- + are both connected and accessible while offering a peaceful and serene quality.
- + are multi-generational where families can grow with the community.

Youth Perspective

Two community pop-ups were organized to gather feedback from young people and children. Students at St. Gerard Elementary School and the youth who attend the Crystal Kids after school centre shared their input with the project team about Eastwood and Elmwood Park. This is what they said:



NEXT STEPS

In the next stage of the Eastwood/Elmwood Park Neighbourhood Renewal process, **EXPLORING OPTIONS AND TRADE OFFS**, we will ask you to get more specific in identifying your preferences as they relate to design choices and specific areas within the communities.

An online survey will be available from February 19 to March 4, and watch for notices about the next public engagement event happening April 2019!

For more information regarding the Eastwood/Elmwood Park neighbourhood renewal, upcoming public engagement events, and to subscribe for project updates, please visit **edmonton.ca/BuildingEastwoodElmwoodPark**.

Working together to make the most out of your neighbourhood.

This is your city and your neighbourhood. We want to understand how you experience your neighbourhood and ask for your input on what we might do to make it better.

We will engage and work with you on the renewal of roads, sidewalks, street lights, and park spaces, and promote other community opportunities to enhance how people live and interact in your neighbourhood. We commit to being open and transparent about how your input is used. Let's make the most out of your neighbourhood.



edmonton.ca/BuildingEastwoodElmwoodPark

SHARE YOUR VOICE
SHAPE OUR CITY

Edmonton