

The graphic features a dark background with yellow and white elements. On the left, a yellow outline of a person's head is shown in profile. In the center, the text 'YELLOWHEAD TRAIL' is written in large, bold, yellow capital letters, with 'FREEWAY CONVERSION PROGRAM' in smaller white capital letters below it. To the right, the word 'Yellowhead' is written in a yellow, cursive font. Various yellow arrows and white dashed lines are scattered across the background, suggesting a road or construction theme.

YELLOWHEAD TRAIL

FREEWAY CONVERSION PROGRAM

Construction Bulletin

156 Street to St. Albert Trail

April 22, 2022

Project Overview

Construction of the 156 Street to St. Albert Trail project began in summer 2021 and is anticipated to extend through to the end of 2023. This project includes the removal of the existing street-level intersections at 149 Street and 142 Street, construction of one-way service roads parallel to Yellowhead Trail to provide access to existing businesses and roadways, various utility relocations, and replacement of the Dovercourt noise wall.

Purpose of Bulletin

To accommodate ongoing construction activities, **Yellowhead Trail will be reduced to two lanes in both directions** between 156 Street and St Albert Trail. Additionally, the left turns to and from Yellowhead Trail, at 145 Street and 143 Street, will be closed and subsequently removed.

Schedule

- The lane restrictions and closures on the main corridor commenced on **Friday, April 29, 2022**. It is anticipated that lane restrictions will remain in place until late 2023.

Traffic Accommodations (Map Attached)

- Yellowhead Trail will be reduced to two through lanes in each direction between 156 Street and St Albert Trail.
- The left turning lane at 145 Street in both the eastbound and westbound directions will be closed and subsequently removed.
- The left turning lane at 143 Street in the eastbound direction will be closed and subsequently removed.
- All existing traffic movements at 149 Street will remain at this time.
- Access to local businesses will be maintained at all times.
- Emergency access will be maintained at all times.

Be Safe

For everyone's safety, please exercise caution and follow all construction signage in the area.

For More Information:

Thank you for your patience and cooperation during construction. We understand that this work may cause some inconvenience and we assure you that we will minimize the disruption as much as possible.

To learn more about the project and sign up for updates, please visit:
edmonton.ca/yellowhead156streettostalbertrail

Follow our Twitter account: @YEGyellowhead

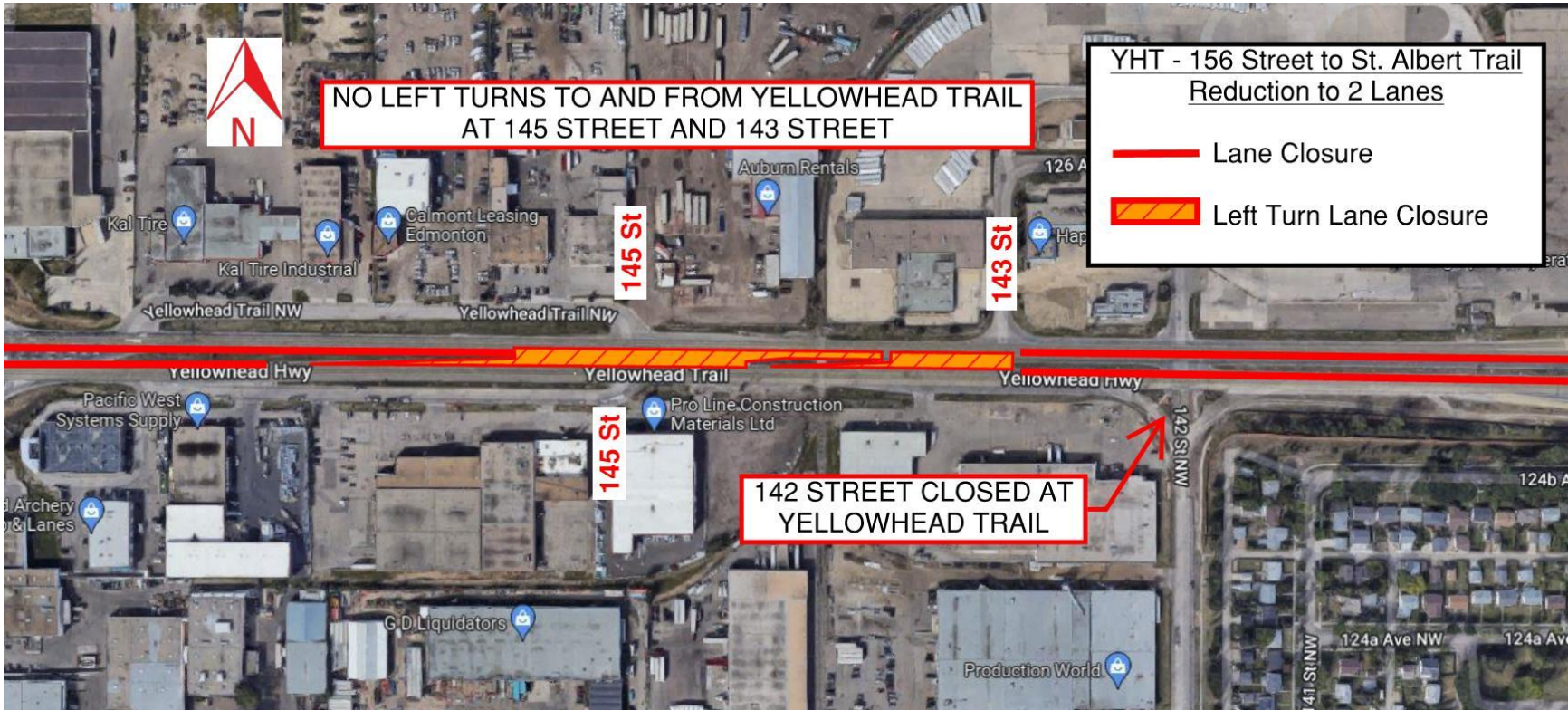
For questions or concerns, please contact:

Duane Winder
Project Superintendent
Standard General Inc.
duane.winder@standardgeneral.ca
780-699-4623

John Phong
Project Manager
City of Edmonton
john.phong@edmonton.ca
780-217-4227

edmonton.ca/YellowheadTrail





NO LEFT TURNS TO AND FROM YELLOWHEAD TRAIL
AT 145 STREET AND 143 STREET

YHT - 156 Street to St. Albert Trail
Reduction to 2 Lanes

- Lane Closure
- ▨ Left Turn Lane Closure

142 STREET CLOSED AT
YELLOWHEAD TRAIL