

Construction Bulletin

156 Street to St. Albert Trail

November 2023

Project Overview

Construction of the 156 Street to St. Albert Trail project includes the removal of the at-grade intersections at 149 Street and 142 Street, construction of one-way service roads parallel to Yellowhead Trail, significant improvements to drainage infrastructure and replacement of the Dovercourt noise wall.

Purpose of Bulletin

To provide awareness of upcoming traffic pattern changes along Yellowhead Trail between 156 Street and St. Albert Trail.

Schedule

The opening of the new one-way **Eastbound** and **Westbound Service Roads** is planned for **Saturday, November 18, 2023**. Please note that construction schedules are weather-dependent and subject to change. Construction is expected to continue until late 2023 and resume in the spring of 2024.

Traffic Accommodations (Map Attached)

- **New Eastbound Service Road**, accessed from eastbound Yellowhead Trail, west of 149 Street, provides access south of Yellowhead Trail to 149 Street, 142 Street, St Albert Trail and south businesses. **The exit at St. Albert Trail directly from eastbound Yellowhead Trail will be permanently closed.**
- **New Westbound Service Road**, accessed from westbound Yellowhead Trail, at 143 Street and 147 Street, provides access north of Yellowhead Trail to 143 Street, 149 Street, 156 Street and north businesses.
- Yellowhead Trail between 156 Street and St. Albert Trail will open to 3 lanes in each direction near the end of December 2023.

For More Information:

We understand that our work may cause some inconvenience and we thank you for your patience.

For more information about the project and detour routes, please visit:

edmonton.ca/yellowhead156streettostalbertrail

Twitter: [@YEGYellowhead](https://twitter.com/YEGYellowhead) **Email:** yellowhead@edmonton.ca

For questions or concerns, please contact:

Duane Winder, Project Superintendent
Standard General Inc.
duane.winder@standardgeneral.ca
780-699-4623

John Phong, Project Manager
City of Edmonton
john.phong@edmonton.ca
780-217-4227

edmonton.ca/YellowheadTrail



Edmonton



WEST YELLOWHEAD TRAIL SERVICE ROAD ENTRANCE

- For Access To:
- 151 Street
 - 156 Street
 - North Side Businesses
 - **NOTE: NO access to 149 Street**

WEST YELLOWHEAD TRAIL SERVICE ROAD ENTRANCE

- For Access To:
- 143 Street
 - 149 Street
 - 156 Street
 - North Side Businesses

Exit Service Road to:

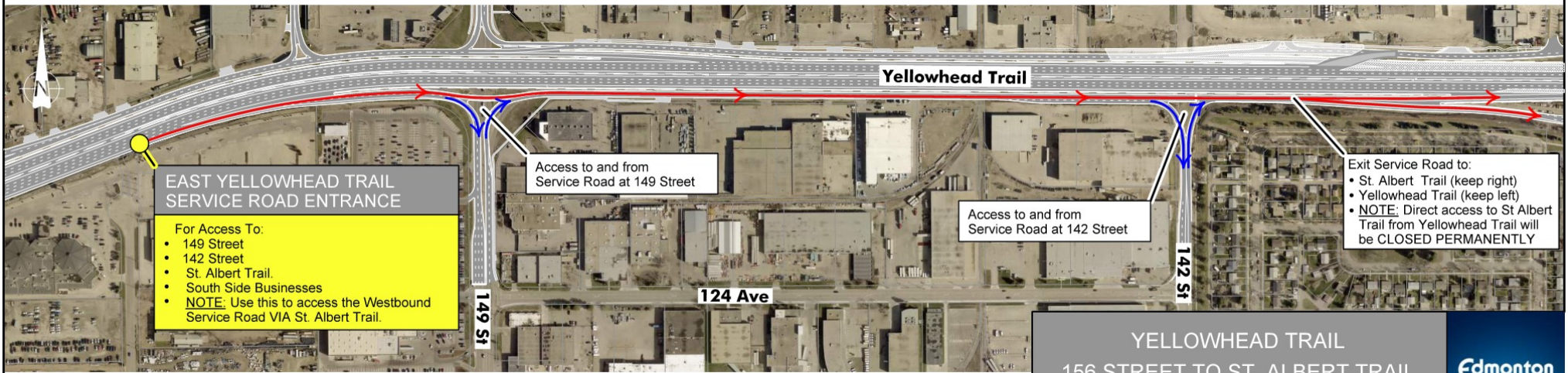
- 156 Street (keep right)
- Yellowhead Trail (keep left)

Access to and from Service Road at 149 Street

Yellowhead Trail

St Albert Trail to Westbound Yellowhead Trail

WESTBOUND ONE-WAY SERVICE ROAD



EAST YELLOWHEAD TRAIL SERVICE ROAD ENTRANCE

- For Access To:
- 149 Street
 - 142 Street
 - St. Albert Trail
 - South Side Businesses
 - **NOTE: Use this to access the Westbound Service Road VIA St. Albert Trail.**

Access to and from Service Road at 149 Street

Yellowhead Trail

Access to and from Service Road at 142 Street

Exit Service Road to:

- St. Albert Trail (keep right)
- Yellowhead Trail (keep left)
- **NOTE: Direct access to St. Albert Trail from Yellowhead Trail will be CLOSED PERMANENTLY**

EASTBOUND ONE-WAY SERVICE ROAD

YELLOWHEAD TRAIL
156 STREET TO ST. ALBERT TRAIL
ROAD AND ACCESS CONFIGURATION

