

## WINDERMERE DISTRICT PARK

January 2026

The City of Edmonton is getting set to start construction on the new Windermere District Park. District parks are designed to meet the needs of multiple communities and are important for Edmontonians' health, wellness and quality of life.

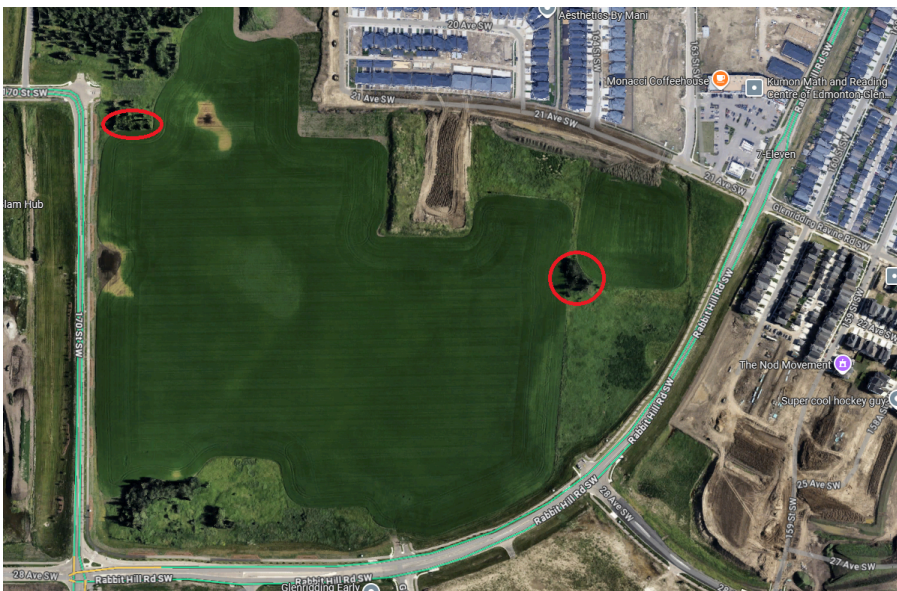
### Project overview

This project will prepare the site with base-level amenities to support the needs of two future schools, a recreation facility and a transit facility. At this point, the project includes construction on the open space elements of the site only, not any of the facilities. This project plans to grade and plant grass seed or sod on the land allocated for the unfunded facility sites including the Catholic school, recreation facility and transit facility sites.

### Tree removals

To prepare the site for construction, two small treestands must be removed. The project will plant additional landscaping leaving the site with more trees than were removed.

The tree removals are expected to start in mid-January and will take approximately one week.



Residents in the neighbourhood may experience increased noise levels and traffic around the area. All construction will take place during the hours of 7 a.m. to 9 p.m. Monday to Saturday, according to the Community Standards Bylaw. Construction equipment and materials will be stored near the work area.

**PLEASE RESPECT ALL SIGNAGE AND OBEY STAFF DIRECTION IN THIS ACTIVE WORK ZONE.**

If you have questions or concerns about this work, please contact the Project Manager at [BuildingGreatNeighbourhoods@edmonton.ca](mailto:BuildingGreatNeighbourhoods@edmonton.ca).

**THANK YOU**