



## Safety improvements are coming to 106 Street!

The **Towards 40 program** is focused on improving road safety in areas where speeding and safety issues have been identified. It encourages safe driving habits and increases speed limit compliance.

The City will be installing adaptable measures to improve safety along **106 Street from 97 Avenue to 100 Avenue**, based on the data collected and the feedback heard during public engagement.

The installation of the adaptable measures, which include **curb extensions, pavement markings, intersection changes** and a **speed table**, are targeted to begin the week of **September 22, 2025** and continue throughout the construction season, weather dependent.

While the roadway will be accessible during installations, please anticipate some impacts such as restrictions to on-street parking, noise due to construction and some temporary delays when there are work crews on site. Please follow any signage or site instructions, such as no-parking signage and directions from work crews in the area.

For an overview of this project and to view the **final design** and **What We Decided Report**, **scan the QR code** or visit [edmonton.ca/Towards40](https://edmonton.ca/Towards40). This includes details about what will be installed and feedback we heard from residents.



### What's next?

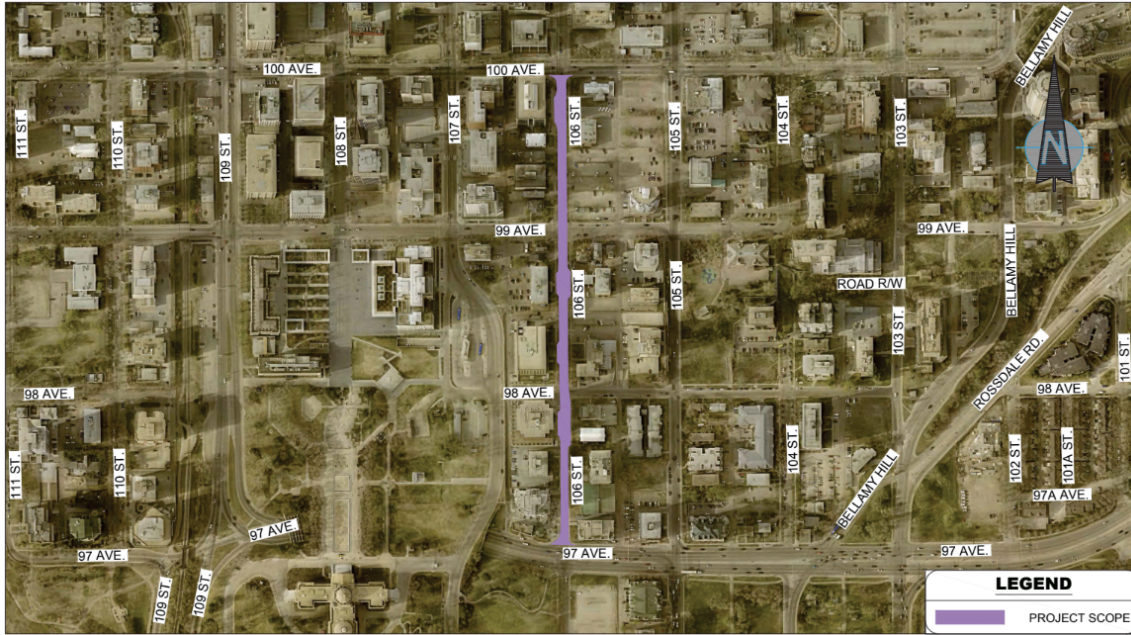
After the installation, there will be a period for residents to adjust to the changes while the City collects traffic data.

Feedback from all road users will be gathered through 311 and used with technical data to assess if adjustments are needed.

**Questions?** Call 311 or email [saferoads@edmonton.ca](mailto:saferoads@edmonton.ca)

## Map of Project Area

- 106 Street from 97 Avenue to 100 Avenue in purple



**TOWARDS 40**  
Scope Map  
106 ST. 97 AVE. TO 100 AVE.

CITY OPERATIONS  
PARKS AND ROADS SERVICES - SAFE MOBILITY  
DATE: August 16, 2024

