

April 2023

Terwillegar Drive Expansion Stage Two: Whitemud Drive and Interchange Upgrades 142 Street Pedestrian/Cyclist Bridge - Tree Removals



Planning for the Whitemud Drive and Interchange Upgrades 142 Street Pedestrian/Cyclist Bridge is underway. The project began construction in spring of 2023.

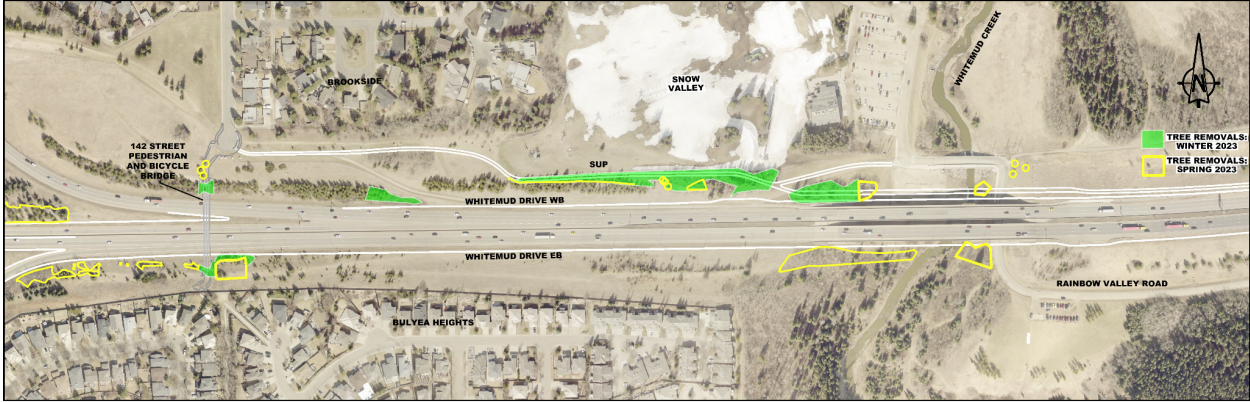
The Terwillegar Drive Stage Two and the 142 Street Pedestrian/Cyclist bridge project include roadway, transit and active transportation upgrades. Building on the Stage One improvements, these upgrades will further alleviate congestion, accommodate planned rapid bus transit services and connect southwest Edmonton to the city's broader active transportation and transit networks to surrounding destinations.

Tree removals required for the project took place in late January. Additional trees need to be removed in April to support construction activities. The City of Edmonton project team has worked closely to minimize the number of trees removed and to ensure that the construction work does not compromise the integrity of the retained trees within the boundary of this project.

City-owned trees are a highly valued asset and are only removed when all other preservation options are unsuitable. As part of the Urban Forest Management Plan, new trees and shrubs will be planted in the project area once construction is complete.

The map below outlines in yellow the additional tree removal areas related to this construction. Previous tree removal notifications are shown in green.

Project Area



For information about this project:



Visit: edmonton.ca/TerwillegarDrive

Email: terwillegardrive@edmonton.ca