

Reuse Centre

Edmonton

● Self-
Guided
Tour



Welcome to the Reuse Centre!



**Thank you for your
interest in making
less waste.**

The Reuse Centre accepts (waste) items that people don't need and offers them to others for **reuse**.

This service prevents these items from going to a landfill and potentially harming the environment.



15

years

This year is the Reuse Centre's **15th anniversary**.

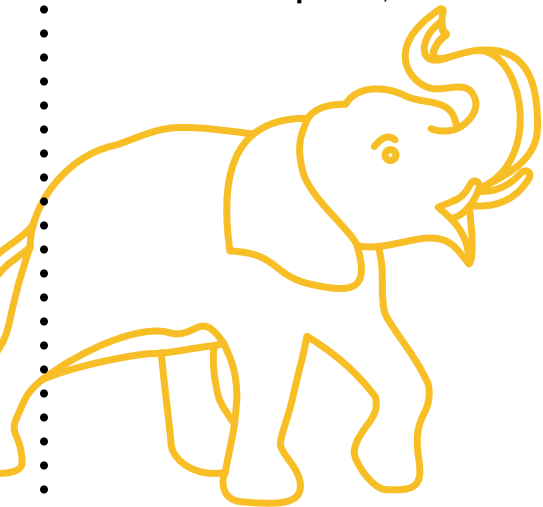
To celebrate, everything in our store is **free**.



● **2,680**
tonnes

Since opening, the Centre has stopped **2,680 tonnes** of material from going into the garbage.

(That's as much as the weight of **765 African elephants!**)

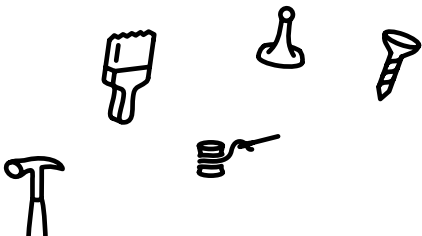




Whoa!

When you walk in the front doors, take a minute to **look around** at all the stuff on the shelves.

Imagine if all this stuff was going into a landfill; **it would take up a lot of space!**





Terminology

Before you start your tour, it may help if your group is familiar with the following terms.



Reduce

To make smaller, decrease amount.

Responsible consumers try to limit the amount of items they purchase to have a positive impact on the environment and create less waste.



Reuse

To use an item more than once (e.g. using reusable water bottles, lunch containers, batteries, etc.).

The Reuse Centre allows citizens to donate items for others to take and reuse in the future.



Recycle

To convert waste into new materials.

In Edmonton, you can put your paper, cardboard, plastic, metal, glass and beverage containers in a blue bag and those materials will be broken down and turned into new materials. (ex: Plastic bottles = Fleece)

Landfill

A place to put garbage into the ground by burying it and covering it with soil.

Waste that goes into black garbage carts goes to the landfill where it harms animals, people and the environment.

Waste

An item or material that is no longer viewed as useful.

The Store Area

All of the things you see here came from the community.

We organize everything and put them in the store in a way that makes them easy to find.

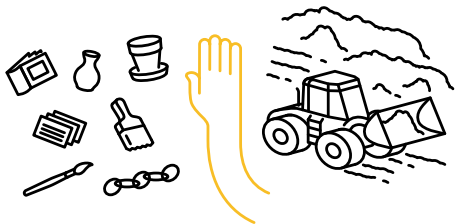


By keeping these things out of the garbage, we can help people who need them and help our environment.



Some of the people that shop here are students, teachers, artists, daycares, community groups, social service agencies, and others who want to reuse items.

In **2019**, we saved **90% of all donations** from landfill.



Don't forget to **weigh your finds** before leaving, as this is how we keep track of what is being saved from the landfill.





Interpretive Space

**Look through the windows
by the art supplies.**



That room is where we run fun programs like **Choose to Reuse, Green City Challenge** and **DIY Workshops**.

You can **learn how** to make your own items from reused materials, how to reduce your waste at home and more!



Check out our website for more information:
edmonton.ca/reusecentre

Scavenger Hunt Activity

Can you find these items?

Pencil crayon

Puzzle

Notebook

Paint brush

Gift bag



***Special challenge:** Take a picture with the garbage truck and share it with us **@reusecentre** on Facebook and Instagram!

Drop Off Area



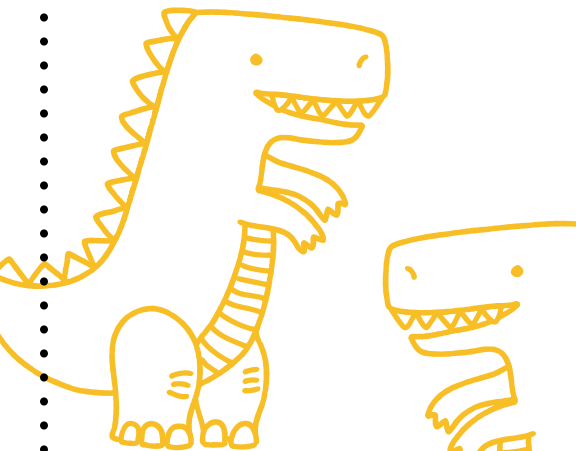
Beside our front doors, on your right when you're exiting, is our drop off area.

This is where people bring their items so we can put them in the store. We are always looking for donations, and you can help by bringing in anything on our **accepted materials list**.

We take in **over 200 different items**, including puzzles, board games, craft supplies, paints, beads and much more.

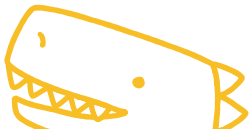


Once items are dropped off, they are sorted throughout our store area to make them easier to find.



In 2019, we received 320 tonnes of items. That's an average of **27 tonnes per month**.

(That's three times as heavy as a Tyrannosaurus rex!)





Stay connected!

Follow us to stay informed and share your projects and waste reduction ideas with the Reuse Centre on social media **@reusecentre!**