

What We Heard Ottewell Neighbourhood Renewal

Community Feedback on Draft Design

December 2021 – January 2022

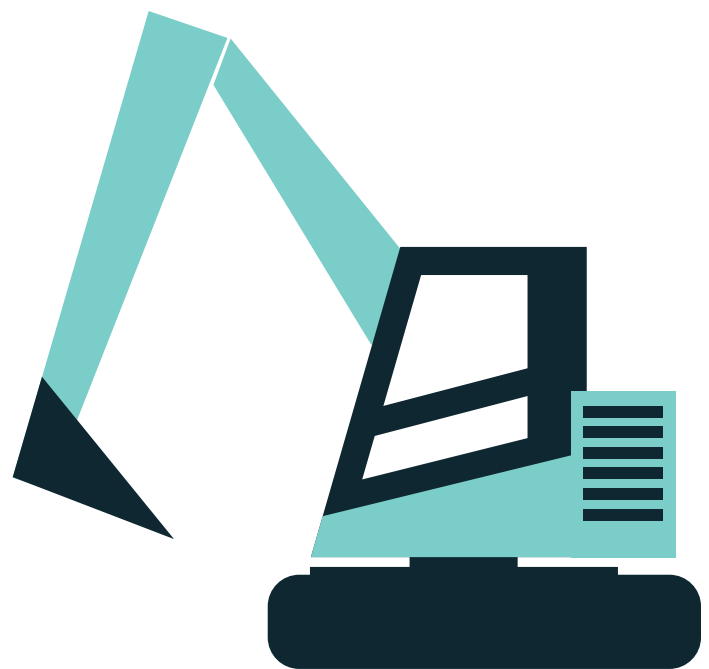
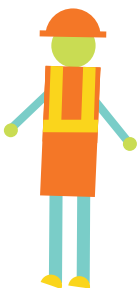
REFINE

SHARE YOUR VOICE
SHAPE OUR CITY

Edmonton

Table of Contents

3	Project overview
4	Vision and guiding principles
5	Public engagement for the Ottewell Neighbourhood Renewal
6	Roadmap to Building Great Neighbourhoods
7	Decision-making process
8	What we asked and what we did
9	What we heard
14	Next steps

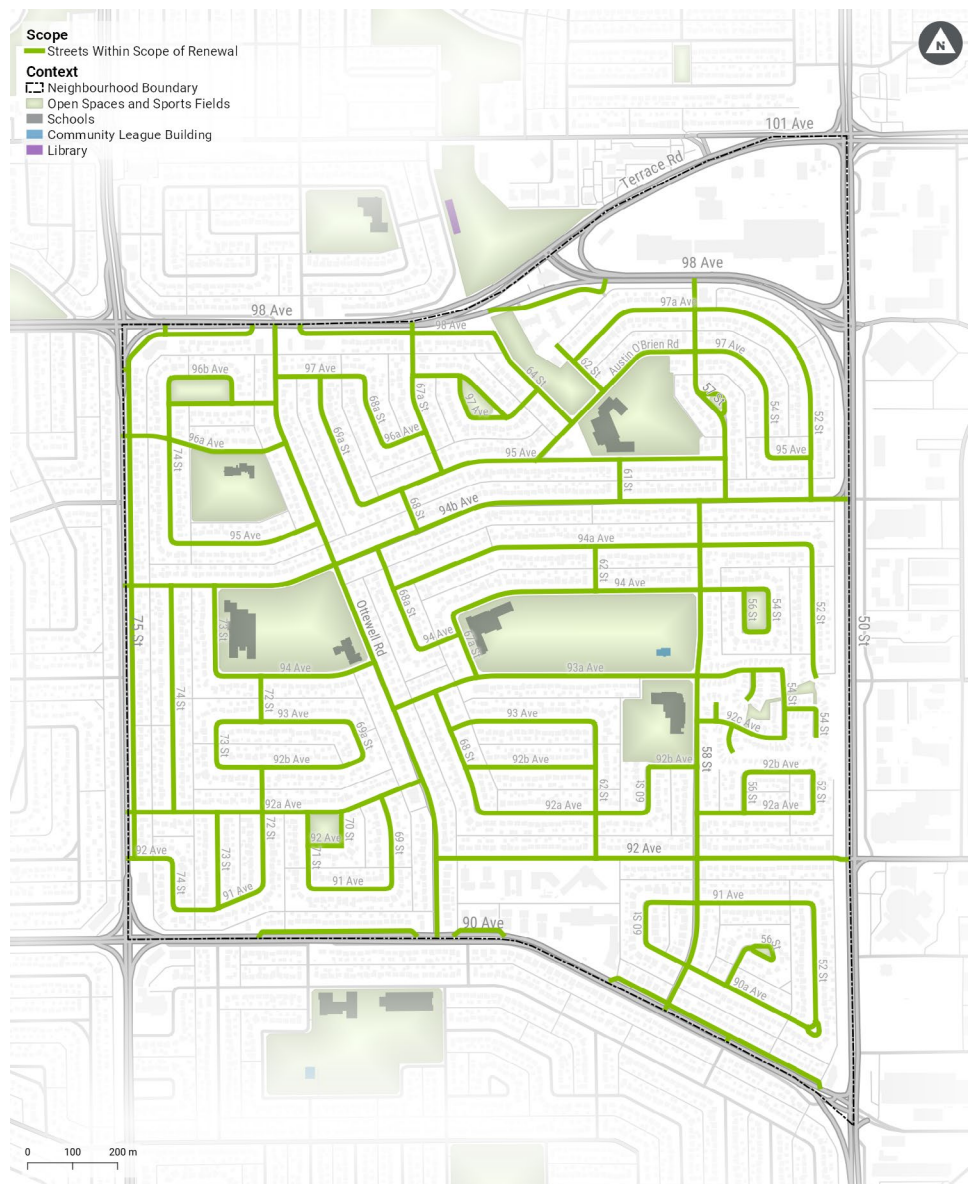


Project overview

Ottewell has been chosen for Neighbourhood Renewal to update its aging streets and sidewalks. Construction is scheduled to begin in 2023.

Neighbourhood Renewal rehabilitates residential roads, replaces street lights, sidewalks, curbs and gutters and adds missing sidewalk links, where possible. Other opportunities to improve how people walk, roll, bike and drive in the neighbourhood. How they enjoy City-owned parks and open spaces are also explored.

Ottewell Neighbourhood Renewal project scope map



Vision and guiding principles

The vision and principles were generated by the community in the first stage of engagement.

Vision

A small town in the heart of the city.

Guiding Principles

Ottewell is a community that:



Enjoys safe sidewalks that encourage people of all ages to take advantage of good connections through a walkable neighbourhood.



Celebrates the neighbourhood's splendid character, with mature trees and parks.



Delights in its green spaces, with activities and amenities for all ages and abilities.



Values its family-friendly, multi-generational neighbourhood where all are welcome.



Appreciates safe streets where people driving respect speed limits and traffic laws.



Invites and encourages all kinds of mobility options for people walking, cycling, driving and other forms of active transportation.



Nurtures a strong sense of community where people feel safe and look out for each other.

More than 5,900 residents live in Ottewell, each with needs and opinions on how they envision its future. Since fall of 2020, feedback has been through surveys, emails/phone calls and stakeholder discussions. Early public input was used to develop the Project Vision and Guiding Principles that, along with ongoing public engagement, continue to guide the Project Team when making project decisions.

Thank you to everyone who participated in the public engagement opportunities to date and contributed knowledge and experience to help shape the future of Ottewell.



Public Engagement for Ottewell Neighbourhood Renewal

Members of the Building Great Neighbourhoods Project Team are genuinely interested guests, stepping into the Ottewell neighbourhood as visitors. The team wants to learn and appreciate how people live and what they value and need in their neighbourhood. The team seeks to involve local residents and business owners in decision making to shape the vision for engagement and neighbourhood improvements.

An interactive public engagement process was designed to gather local knowledge, views and opinions from residents and property owners to inform the development of the neighbourhood design and ensure it meets the needs of both current residents and visitors and those in the future.

Public engagement spectrum

The City of Edmonton is committed to seeking diverse opinions, experiences and perspectives from Edmontonians, ensuring a wide range of input is available to support decision making.

The City's public engagement spectrum defines the public's level of influence in the engagement process. Engagement activities during this stage were at the **REFINE** level..

The public was invited to provide input that would help:

+ **REFINE** the draft design for Ottewell Neighbourhood Renewal

We commit to telling you how public input influences decisions according to the public engagement spectrum.



Visit edmonton.ca/PublicEngagement for more information on the City's public engagement process and click on Vision, Definition and Spectrum.

Roadmap to Building Great Neighbourhoods

The Neighbourhood Renewal program follows the roadmap below. At each step, the project team shares with you how your input will inform the decisions being made.

This report highlights the input received during the **Community Feedback on Draft Design** between December 2021 and January 2022.



LEGEND

- 
Public Engagement and Communications Opportunities
- 
Concept Phase
- 
Design Phase
- 
Build Phase
- 
Operate Phase

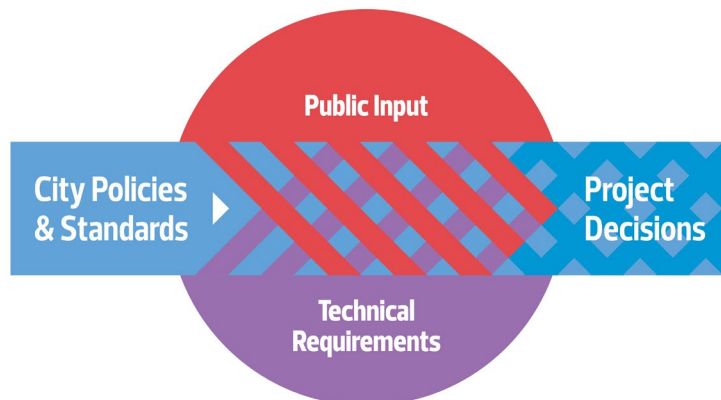
Community feedback on draft design

During this project stage, the Project Team reviewed and analyzed public feedback on the proposed options from the previous engagement stage – **Exploring Options and Tradeoffs** – and the team used this analysis to create the draft neighbourhood design. The draft design is the first look at how the proposed infrastructure and design elements could work together as a system. The draft design was shared with the public to gather feedback.

Decision-making process

The City makes decisions using a combination of policy and program information, public engagement input, technical requirements and available funding. This process helps to ensure the decisions we make are fiscally responsible, align with best practices, consider the existing public and private infrastructure, land uses and activities in the neighbourhood and result in the best outcomes for our city.

City policies and programs such as the City Plan, Complete Streets Design and Construction Standards, Safe Mobility Strategy and Winter City Strategy provide the overall direction for Neighbourhood Renewal designs. As each neighbourhood is unique, the Project Team asks for input from residents who live, work and play in the neighbourhood and considers technical aspects such as roadway widths and conflicts with utilities and trees to determine what will fit in the neighbourhood.



What we asked and what we did

The Ottewell Neighbourhood Renewal project team organized the following opportunities for the public to provide input to help **REFINE** the draft design.

What we asked

A survey was completed in winter 2022 that had draft design options on local roads, main roads and open spaces. Respondents were asked to provide feedback on the options.

What we did

This stage provides draft designs for specific locations being addressed, as well as the broader neighbourhood. People were asked to consider the draft designs and provide feedback.



Survey

- + An online survey with two components was conducted between December 17, 2021 and January 14, 2022 on the City of Edmonton website. Residents were encouraged to answer both parts or select the one that held the most interest for them. The survey components were:
 - Main and local roads
 - Parks and open spaces
- + People were asked to provide feedback on the proposed design changes for main and local roads, and for parks and open spaces. Generally, people were supportive of the proposed changes to the Ottewell neighborhood
- + To help people understand the proposed designs, an booklet illustrating the draft design was created and posted to the City website. This booklet provided information and drawings to help people form opinions for the survey



How we communicated

- + To promote this engagement opportunity we sent **5,170** newsletters to Ottewell addresses and non-resident property owners and mailed **454** letters to individuals to identify specific proposed changes near their properties
- + **Six** road signs were used between December 15, 2021 and January 14, 2022 to help promote the surveys
- + The project webpage received **3,238** unique visits and the design booklet was opened by **112** people
- + To promote the survey, the City of Edmonton ran a Facebook campaign, which had people click the link to the project website page survey **791** times
- + The surveys were also promoted through the City of Edmonton's email distribution to **236** subscribers
- + Project staff spoke with representatives of neighbourhood schools, school boards, Ottewell Community League and Ottewell Place seniors' residence. Over **50** people phoned and emailed with their comments



Response breakdown

- + There were **340** responses to the Main and Local Roads survey and **206** responses to the Parks and Open Space survey



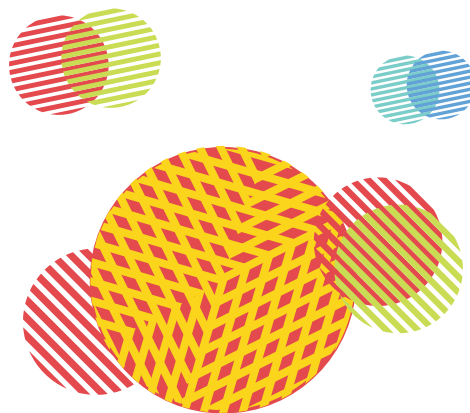
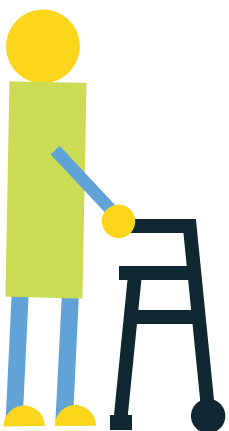
What we heard

The following sections include a summary of what we heard through the online survey. The summary has been developed to reflect the relevancy, frequency and diversity of the responses we received based on the questions that were asked of residents when completing the survey.

Overview of input from the public on main and local roads

Survey respondents showed pride in their neighbourhood and the majority were pleased with the proposed improvements that would improve main and local roads for all users, including people who walk, roll, or bike. Adding to the usability of the parks spaces was especially welcome, particularly the addition of amenities such as garbage bins and benches.

"Overall, very nice design. I especially like the effort to add more trees and the fenced in dog park. Honestly a 10/10."



Main and local roads

Draft designs presented for main and local roads were generally well received. Concerns were related to parking, winter maintenance, project costs, road width near shared-use paths and new boulevards/greenery. While there were some mixed opinions, there was general agreement with the designs presented.

Parking in Ottewell

- + Parking was frequently raised by respondents.
- + Participants shared varying perspectives on the maintaining and removal of parking.

"Eliminate parking on one side of street to permit separated bike and walking lanes."

"I strongly disagree with removing any on-street parking adjacent to residential property."

"On Ottewell Road in front of Clara Tyner school, there needs to be a pick-up drop-off zone for child safety and lack of parent frustration."

"I strongly agree with the intersection changes because I've always felt there should be better accommodations throughout the entire neighbourhood for pedestrian crosswalks."

Traffic safety in Ottewell

- + We heard how safety, congestion and promotion of alternative transportation methods are top of mind to participants.
- + Safety around schools, playgrounds, sports fields and other popular destinations was a priority for respondents. Some felt that special loading zones for pick-up/drop-off, additional crosswalks, bump outs and other traffic safety measures needed to be incorporated into the design.
- + Some expressed concerns that removal of on-street parking near schools would cause safety issues. They suggested adding loading zones for parents picking up/dropping off students.



Shared-use paths

- + Creating shared-use paths on 92, 92A and 93A Avenues was generally supported.
- + The exception was the shared-use path on 92 Avenue between Ottewell Road and 58 Street. While the other streets had a strong majority in favour of shared-use paths, the feedback here was split.
- + Winter maintenance was a concern shared by some survey participants. Participants expressed concern with windrows which may affect parking and narrow the road, and for maintenance of the proposed shared-use paths.

"My only concern would be losing parking near the park and community league because people come in from other neighborhoods to play sports."

"I am glad to see the addition of shared-use paths. I feel again that in too many instances street parking was maintained at the expense of even more shared-use path space or dedicated bike lanes."

"Very happy with the shared-use paths. Any time we can encourage cars to live with people walking on bikes, wheelchairs, strollers, walkers etc. is good with me."

"Riding a bike or pushing a stroller is difficult due to poor condition of the sidewalks."

Sidewalks

- + Fixing sidewalks was a high priority for respondents, especially considering many responses indicated that people walking and younger people riding bikes preferred to use the roads instead of the sidewalks due to their poor surface condition.

Boulevards

- + There was support for more green space and boulevards as a means to add beauty to the neighbourhood. Some feel it is important to design well so sight lines are clear, the area is easily maintained and that the roadway is not narrowed.

"I like the addition of boulevard trees and wider paths. The LID is also appreciated and if it could help to minimize flooding, that would be great."

"Corner of Ottewell Road and 94 Avenue is not wide enough for cars to safely go already, will be unsafe. Adding trees on the east side increases risk of not seeing children walking. It will be a parking lot at 3:00. Not a good plan at all!!!!"

Parks and Open Spaces

People shared they would like more park and open spaces, particularly for sitting, reading and enjoying the neighbourhood in new ways.

The draft designs were enthusiastically received, with the majority indicating the designs met their expectations. Participants suggested the designs added to the beauty of the neighbourhood and transformed unused places into community gathering spaces.

In addition to beautifying unused space, respondents liked the idea of enhancing existing park space, acknowledging that parks were an important feature in the community.

Pocket parks

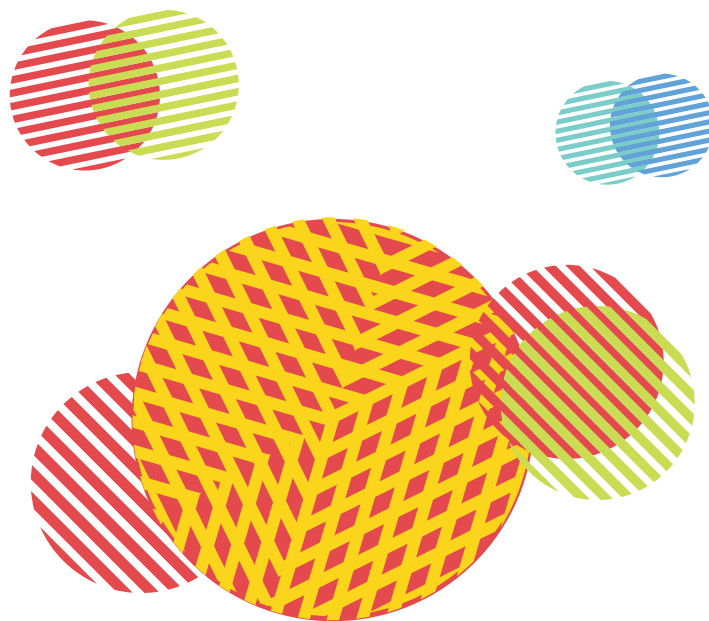
Pocket parks are small open spaces that are intended to provide residents with park opportunities within 0.5km, or a 10 minute walk, of their home. These parks are typically located along roadways and are intended to provide unstructured recreation opportunities for residents and passersby.

- + Pocket park designs were well received, with the majority of responses supporting the proposed park spaces. Most comments included appreciation and the excitement for the community's green spaces.
- + A few perspectives encouraged the City to consider its ability to maintain the parks.



"They are all very nice designs that allow for people to walk and experience the neighborhood in a new way."

"The kids play areas with labyrinths are very nice. I like how these parks will be places to relax and walk through now."





Fulton Park

- + A majority of respondents said they liked the proposed designs for Fulton Park.
- + Participants shared both support and concern for the off-leash dog park.

"I'm glad that a fenced dog park will be added to the neighbourhood, hopefully this will stop people using school yards as dog parks"

"I am not sure this green space is the best for a fenced, off-leash dog area. Being so close to a high school (where students use this field to have lunch, play sports, etc) after and during school, it raises safety concerns with having a dog park on that same plot of land. I foresee many instances where injuries and disagreements may take place."

"Ottewell Park is already an asset to our neighbourhood, and these improvements will only help to make it more accessible and attractive."

"I notice many new concrete paths are being placed in the parks. I wonder if there are plans to keep them clear of snow during winter."

Ottewell Park

- + Most respondents liked the proposed designs for Ottewell Park as a central green space in the neighbourhood.
- + Written comments indicated concerns were related to maintenance and types of pathway, rather than the overall park design.



Open space behind Waldorf School

- + Most respondents supported the proposed design for the open space behind Waldorf School, saying it makes the space more usable.

"I am thrilled with the design as someone who lives nearby the Waldorf School and would like to make better use of the open space! I'm highly supportive of the proposed design plan."

"What is the purpose of the sidewalk? There already sidewalks/ alleys all around this area so the extra sidewalk is fully unnecessary."

"This is a great idea and badly needed."

"The sidewalk is a good idea, but the trees are not. They take up space and require ongoing care and pruning to keep them healthy."

"What a great improvement. The seniors as well as children going to the area daycare will have a safe place to walk to the plaza."

Pedestrian connection to Ottewell Plaza

- + The proposed connection for people walking to and from Ottewell Plaza was well received by a strong majority of respondents. Many felt the improvements would make connection safer for children and people of all ages.

Breezeways, alley connections and community benches

- + These ideas all received strong support from survey participants and were a welcome amenity in the community.



Next steps

The project team will review all of the feedback provided, along with technical information and City policies and programs, for consideration in the development of the final design.

The project team will return to the community to share a final design of proposed renewal changes for your neighbourhood in fall 2022. During the **Community Feedback on Final Design** stage of engagement, we invite you to provide your feedback to **ADVISE** on the final design for Ottewell Neighbourhood Renewal.

Property owners in each neighbourhood undergoing renewal have the opportunity to upgrade to their community's choice of decorative street lights through a community-initiated Local Improvement process. The selected option submitted to the City was Standard Street Light – Powder Coated Black. In summer 2022, the City will send an Expression of Interest package containing estimated costs asking registered property owners to indicate whether or not they support the decorative street light Local Improvement and provide their response to the City by fall 2022.

Stay informed

For more information regarding the Ottewell Neighbourhood Renewal, upcoming public engagement activities and to subscribe for project updates, please visit edmonton.ca/BuildingOttewell.

Working together to make the most out of your neighbourhood

This is your city and your neighbourhood. We want to understand how you experience your neighbourhood and ask for your input on what we might do to make it better. We will engage and work with you on the renewal of streets, sidewalks, street lights, and park spaces, and promote other community opportunities to enhance how people live and interact in your neighbourhood. We commit to being open and transparent about how your input is used.

Let's make the most out of your neighbourhood.

SHARE YOUR VOICE
SHAPE OUR CITY

Edmonton