



# CONSTRUCTION NOTICE

## Latta Bridge Replacement

Greetings,

The City of Edmonton will be undergoing work in your area which involves the replacement of Latta Bridge, located along Jasper Avenue, northeast of 91 Street and southwest of 90 Street. We would like to inform you that pre-construction activities are scheduled to begin in mid-February with the removal of some trees and vegetation in the project site. Tree removal will not affect the flow of traffic, access to river valley trails or pedestrian bridge access.

### Tree Removals

Tree removals will begin mid-February 2022. Tree removals are necessary to facilitate construction access required for the scope of work. Removals are being done in compliance with the City of Edmonton [Corporate Tree Management Policy](#).

We are working with the City of Edmonton Forestry department to ensure a restoration and tree planting plan will be developed and implemented once the bridge is complete.

### Project Update

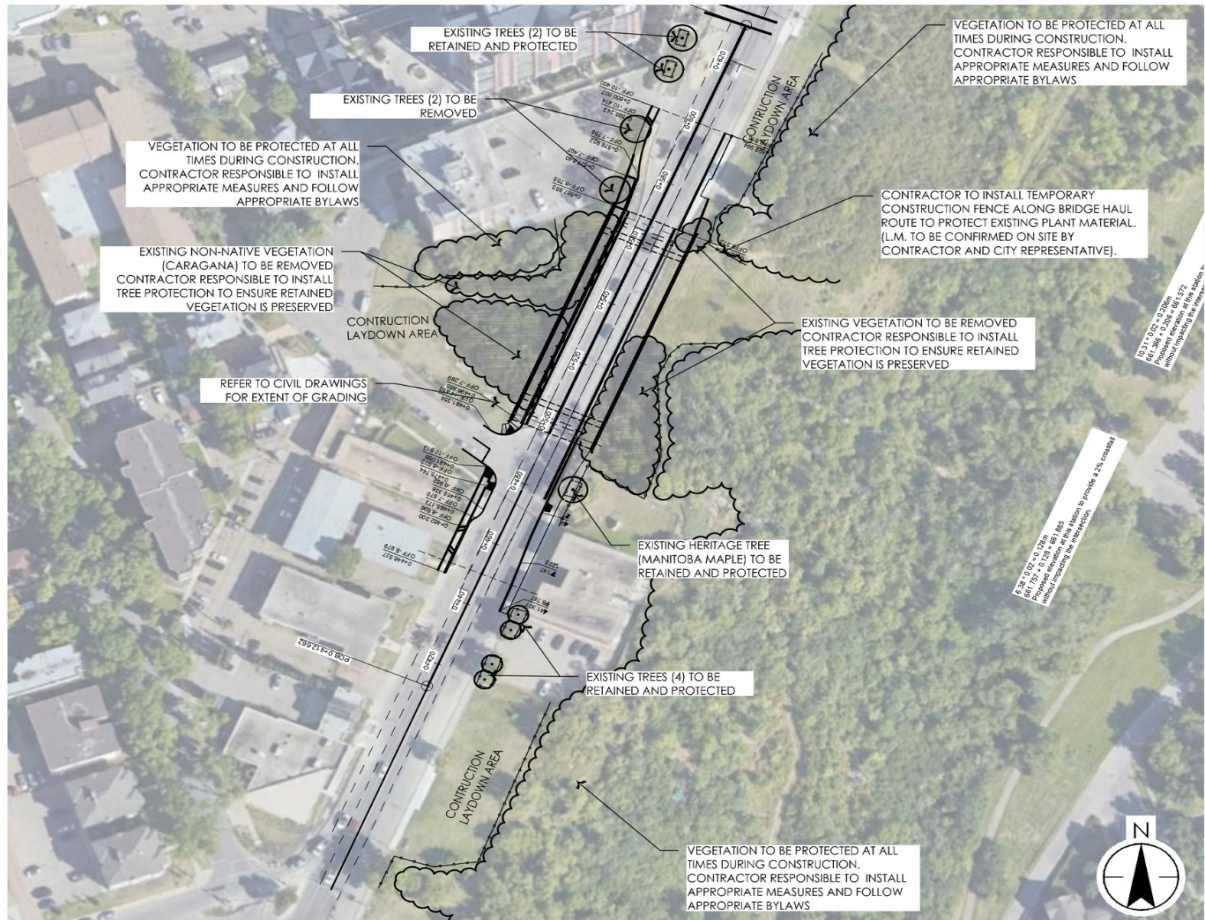
The project is currently in the detailed design phase with construction anticipated to begin in August 2022. A public information session is scheduled for spring 2022, prior to construction.

### Project Overview

Latta Bridge was originally constructed in 1911 and currently serves as an arterial roadway with 4 lanes of traffic. Latta Bridge is located along Jasper Avenue, northeast of 91 Street and southwest of 90 Street. The bridge crosses Latta Ravine, the site of a maintenance access trail, which provides further access to Dawson Park and the river valley.

A Condition Assessment, Load Evaluation and Management Strategy Report was completed in December 2019 and recommended full replacement of the bridge.

We will update our website, [Edmonton.ca/LattaBridge](https://Edmonton.ca/LattaBridge), as construction progresses. If you have questions or concerns about the Latta Bridge Replacement project, please contact the Engineering Project Manager, Loli Fernandez, [lattakinnard@edmonton.ca](mailto:lattakinnard@edmonton.ca).



**A** TREE REMOVALS AND PROTECTION PLAN  
SCALE: 1:300

