

# PROJECT NOTICE

## Capital Line LRT Utility Relocation Project

**MAY 2023**

### PROJECT OVERVIEW

As part of the City of Edmonton's Capital Line South LRT Extension Project, EPCOR is responsible for relocating the power, water and drainage utilities to avoid potential conflicts with future LRT infrastructure. This line is an extension of the current Capital Line, which will operate from Century Park to Ellerslie Road.

To meet the overall LRT project schedule, the City of Edmonton has requested that EPCOR perform the utility relocations within specific areas along the route prior to LRT construction.

Work to relocate power, water and drainage utilities began in March 2023 and is expected to be complete by the end of 2024. This notice outlines the work planned for 2023. Residents and businesses around the specific work areas will receive additional information prior to construction starting.

EPCOR is committed to engaging and building relationships with the community and stakeholders. Current relocation work will also support the ongoing reliability of utility services in these areas.

For up-to-date information and project notices, please visit [epcor.com/capitalline](https://epcor.com/capitalline).

### WHAT'S HAPPENING

#### Drainage Utility Relocations

- Drainage utility relocations will occur on the west side of 111 Street NW from south of 23 Avenue NW to 12 Avenue NW. Work will include a storm sewer relocation, forcemain relocations both north and south of Blackmud Creek and outfall rehabilitation within Blackmud Creek. Work is anticipated to begin in **early June** and is expected to be completed by the **end of 2023**.

#### Power Utility Relocations

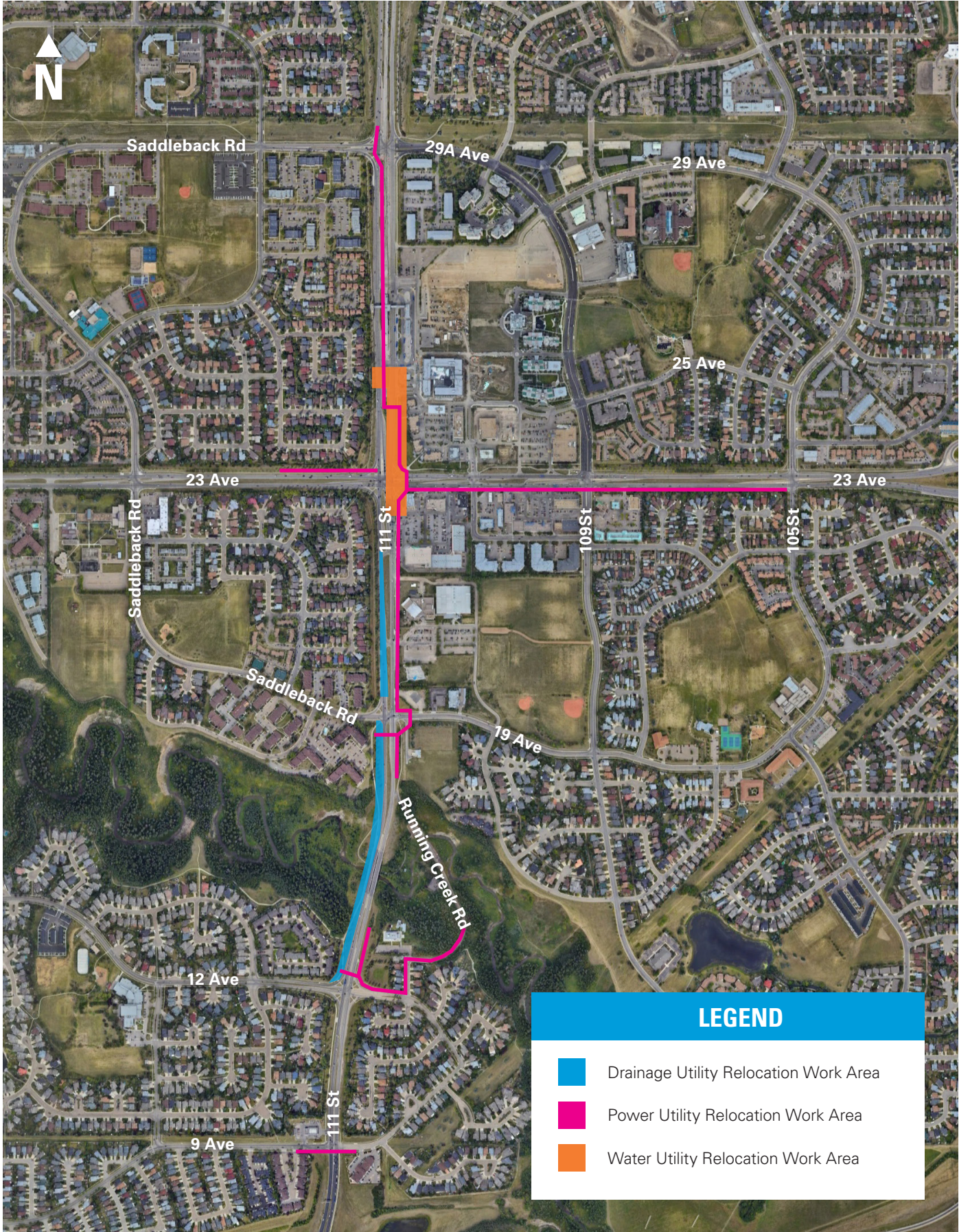
- Power utility relocations will occur along Running Creek Road, and in specific locations along 111 Street NW from 9 Avenue NW to 29A Avenue NW. Work will include small excavations and directional drilling to install new underground power cables. We will also be relocating various above ground electrical infrastructure such as transformers, cubicle switches and power poles. Work began in **March** and is expected to be completed in **late fall 2023**. Additional work along 111 Street NW, south of 9 Avenue NW will occur in **2024**.

#### Water Utility Relocations

- Water utility relocations will occur along 111 Street NW both north and south of 23 Avenue NW. Work will include moving a water transmission main to the east side of 111 Street NW for a distance of approximately 450 metres. Work will begin as early as **June 2023** and will take approximately **two months** to complete.

*Please note, timelines are estimates and may change based on work progress, material procurement, unforeseen delays, weather and construction conditions.*

# OVERALL PROJECT AREA



## WORK ACTIVITIES

You may see some of the following work activities in your area.

### Open-trench Construction/Excavation

Open-trench construction is a method in which surface area is excavated to install new infrastructure. Most of the drainage infrastructure and water main relocation work for this project will include this type of construction.

Open-trench construction requires a large area to accommodate trenching; therefore, impacts usually include road and/or sidewalk closures. Due to the amount of material and equipment required, there is often a laydown area that needs to be incorporated onto the site, which may cause a large portion of a road and/or sidewalk to be closed, or disrupt a greenspace area normally used for public recreation.



### Water Utility Relocation

Water utility relocation work includes moving an existing water main to an alternate location after the infrastructure has been exposed through open-cut excavation.

In addition to the activities associated with open-trench excavation, customers affected by water main relocations may require a temporary water connection supplied by EPCOR while work is ongoing. We aim to notify affected customers at least 24 hours in advance, where possible.

### Directional Drilling

Directional drilling will be used to install new underground electrical and drainage infrastructure. This method is used in an effort to minimize the amount of ground disturbance to an area or for crossing large roads or bodies of water, and where open-cut is not feasible. Directional drilling will be primarily utilized in the Blackmud Creek area.



## PROJECT IMPACTS

Further notifications will be provided before work begins and will include details of traffic impacts, timelines and schedule when possible.

Once construction is complete, EPCOR will restore the work area to its original or better condition. This includes all affected landscaping, roads and sidewalks.

### Traffic

- Depending on the work location, residents and businesses can expect to see activity that is typical to construction, including company/contractor vehicles and equipment.
- Road and sidewalk closures are anticipated. Signage will indicate closures and detours along with any parking restrictions.
- We will work with the City of Edmonton to relocate bus stops as needed.
- Construction vehicles and tandem dump trucks used for hauling will access work areas through local roadways.

### Laydown Areas

- Laydown areas for material storage are required for this project. Material will be transported to and from these areas for the duration of the construction activities.

### Noise

- Work will create typical noise associated with construction.
- Work outside the noise bylaw hours may occur. More information will be distributed if construction is scheduled outside regular hours outlined in the noise bylaw.
- We will take measures to ensure compliance with the City of Edmonton's Community Standards Bylaw for Noise Control.

### Outages (Water/Power)

- Depending on your location along the route you may experience a water outage during the course of the planned construction work. If we have to shut off the water main temporarily during construction, you will receive written notice at least 24 hours in advance. Water service will typically resume within eight hours.
- If we need to shut off your water during construction for longer than eight hours, we will provide you with a temporary above ground water supply. There will be no consumption charge for water provided through the temporary line. You will only pay the monthly basic charge for water supply and any water consumption provided by regular metering service.
- Power outages may be necessary at times to ensure work can be completed safely. Customers can learn more about power outages at [epcor.com/poweroutages](http://epcor.com/poweroutages).

## MORE INFORMATION

EPCOR is committed to minimizing construction impacts where possible while we work in the community.

If you have any questions regarding this work please contact us.

### EPCOR

**Phone:** 780-412-4200

**Email:** [EPCORprojects@epcor.com](mailto:EPCORprojects@epcor.com)

**Website:** [epcor.com/capitalline](http://epcor.com/capitalline)

For up-to-date information and project notices, visit [epcor.com/capitalline](http://epcor.com/capitalline).

If you have questions regarding the future LRT please contact the City of Edmonton.

### City of Edmonton

**Phone:** LRT Projects Information Centre at 780-496-4874 (voicemail)

**Email:** [lrtprojects@edmonton.ca](mailto:lrtprojects@edmonton.ca)

**Website:** [edmonton.ca/capitalsw](http://edmonton.ca/capitalsw)



*EPCOR respects your privacy. Any personal information we collect about you, including your name, address, phone number, and email address will only be used in regards to EPCOR projects, including electricity transmission and distribution, natural gas, water and drainage. For more information on EPCOR's Privacy Policy, please visit [epcor.com](http://epcor.com). If you would like to opt out, please contact us at 780-412-4200 or [EPCORprojects@epcor.com](mailto:EPCORprojects@epcor.com)*