

Share your feedback on Balwin-Belvedere Transportation Revitalization



Learn more at
edmonton.ca/BalwinBelvedereTransportation

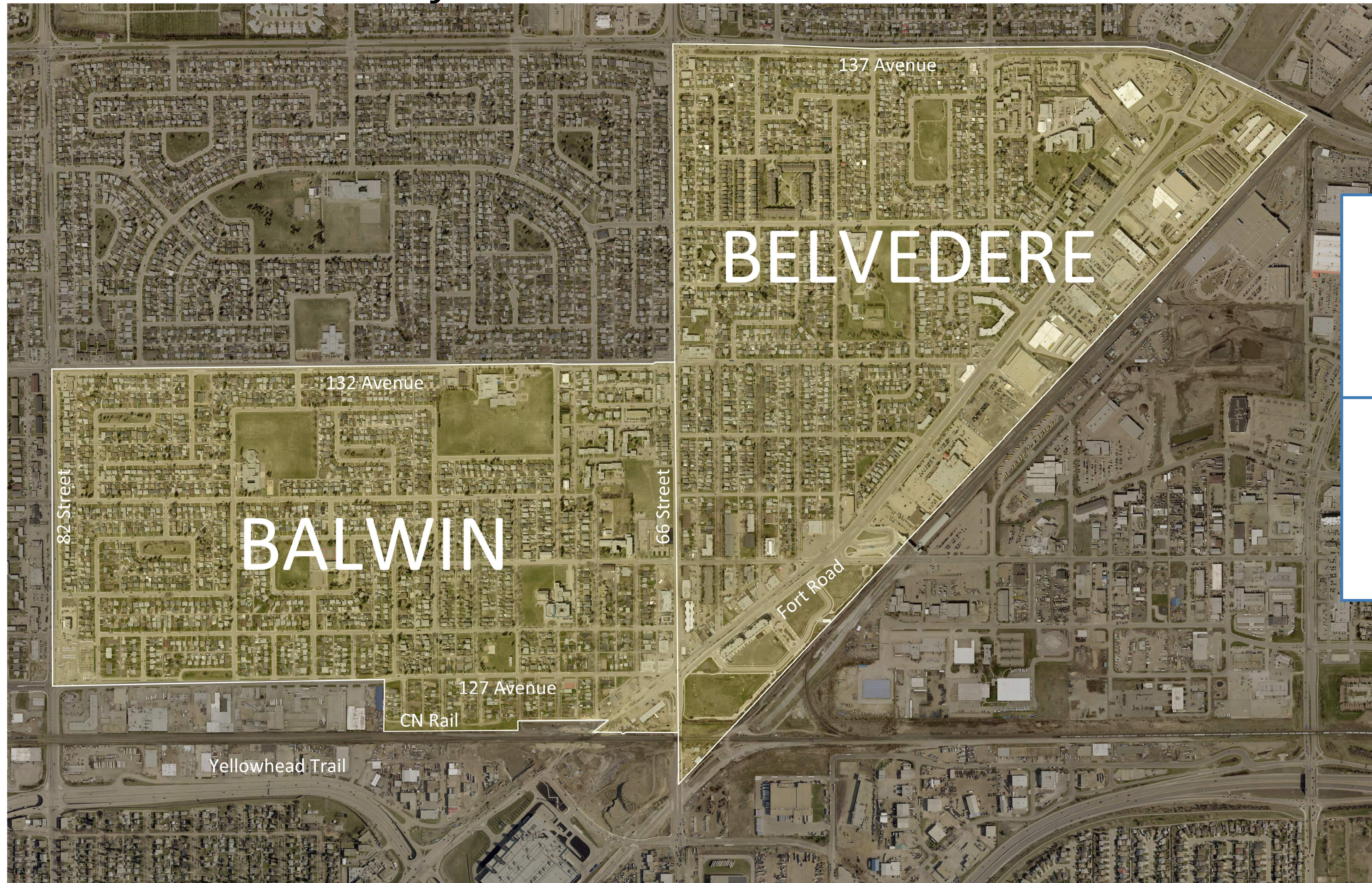
SHARE YOUR VOICE
SHAPE OUR CITY

Edmonton

EDMONTON

Which Community do You Live In?

Place a dot where you live



Elsewhere in Edmonton

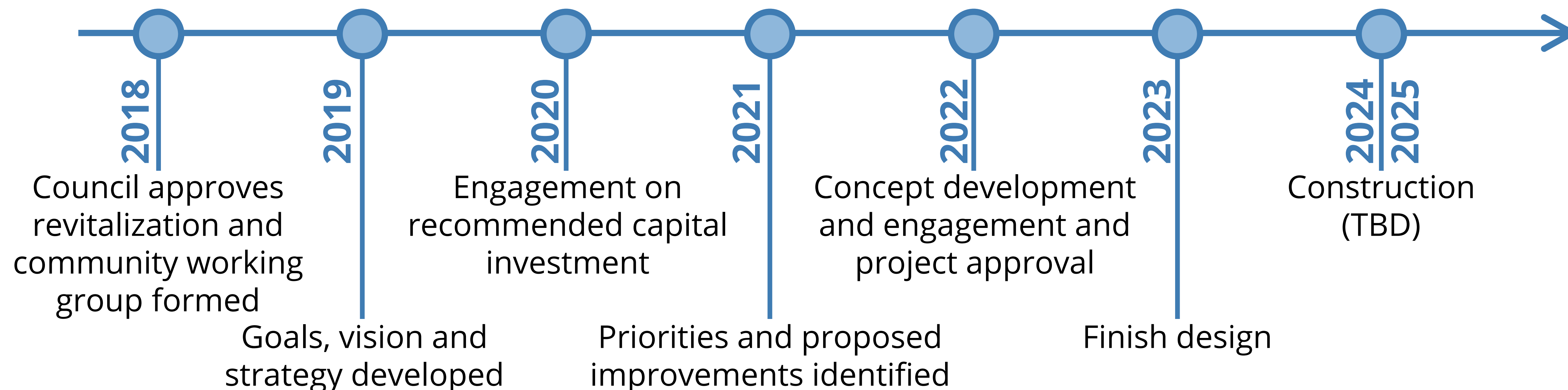
Outside of Edmonton

Edmonton

What Does Transportation Revitalization Mean for Balwin and Belvedere?

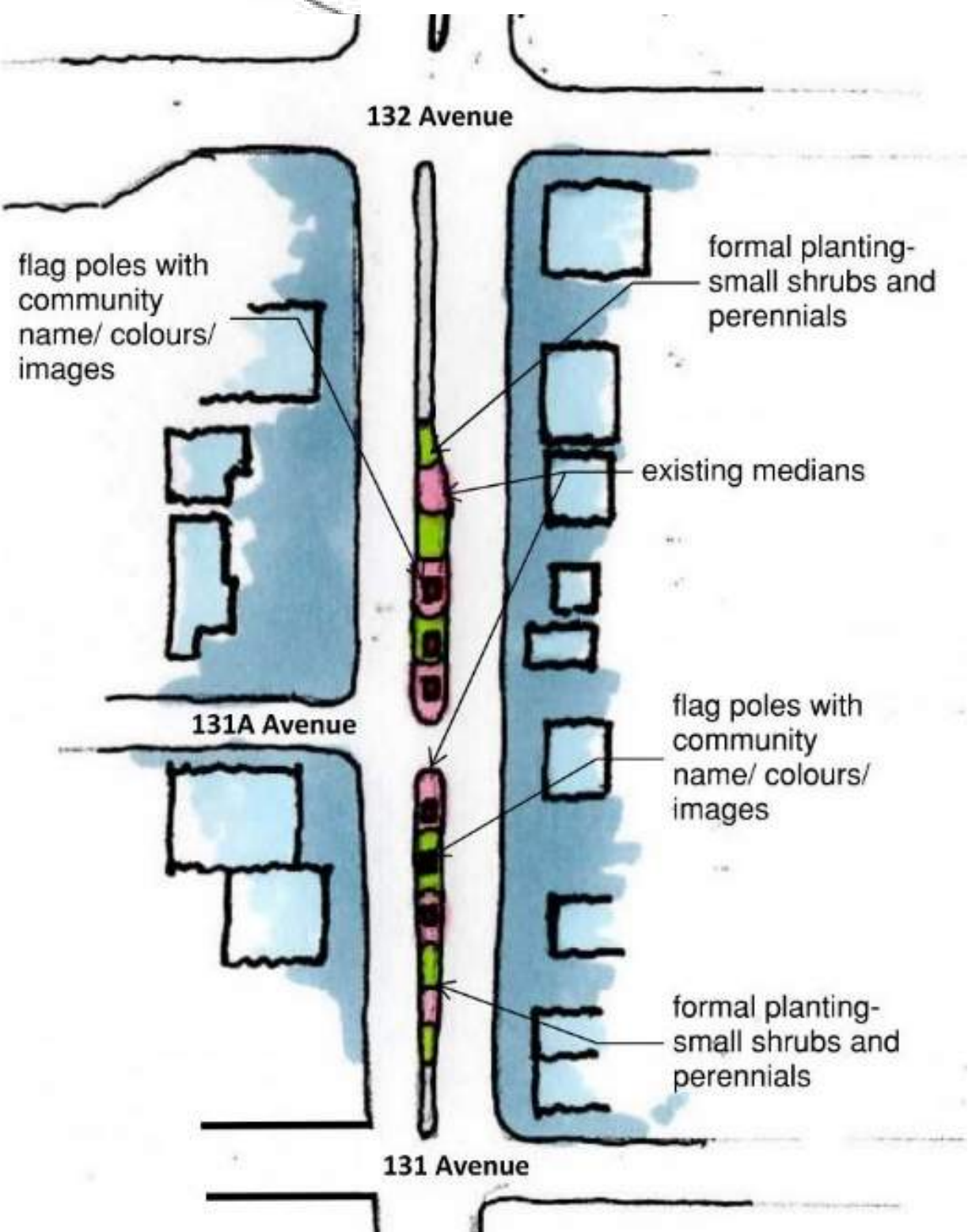
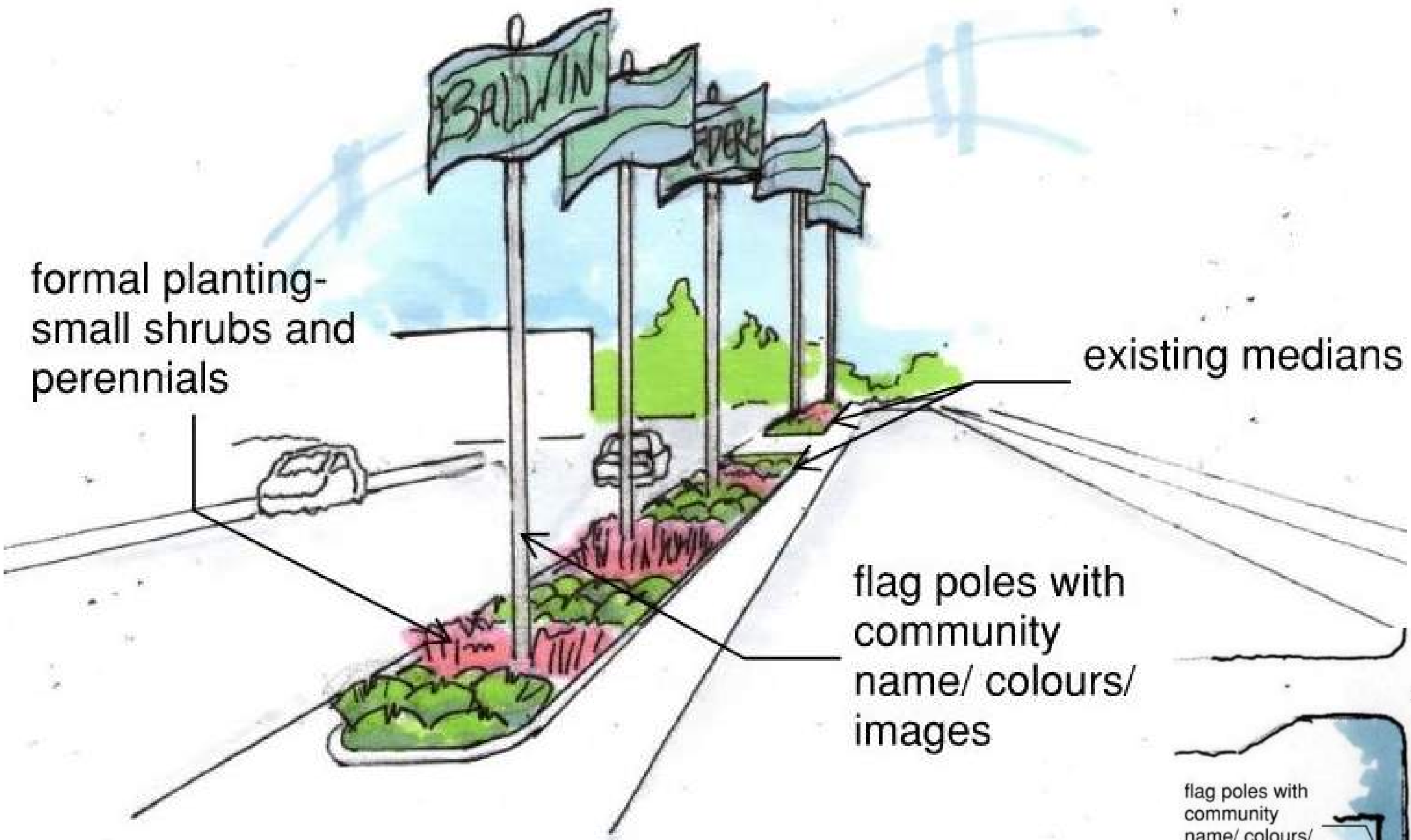
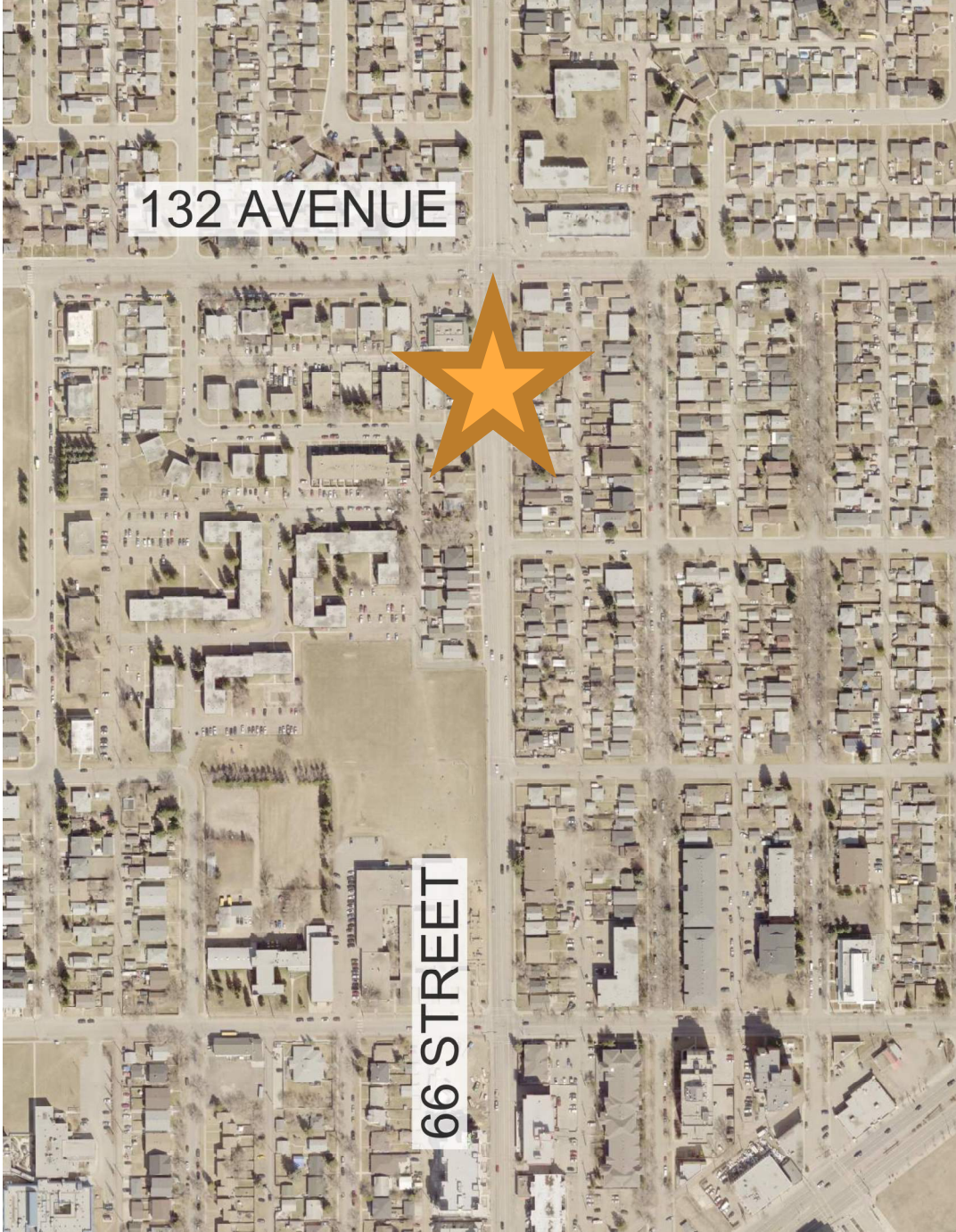
Transportation revitalization improvements on 127 Avenue, 128 Avenue and 66 Street.

- Installing missing curb ramps
- Adding missing sidewalk links
- Curb line changes to improve operations and provide room for landscaping
- Traffic calming and pedestrian crossing features
- Changes to on-street parking
- Landscaping and shrub planting



Entry Feature Design Options

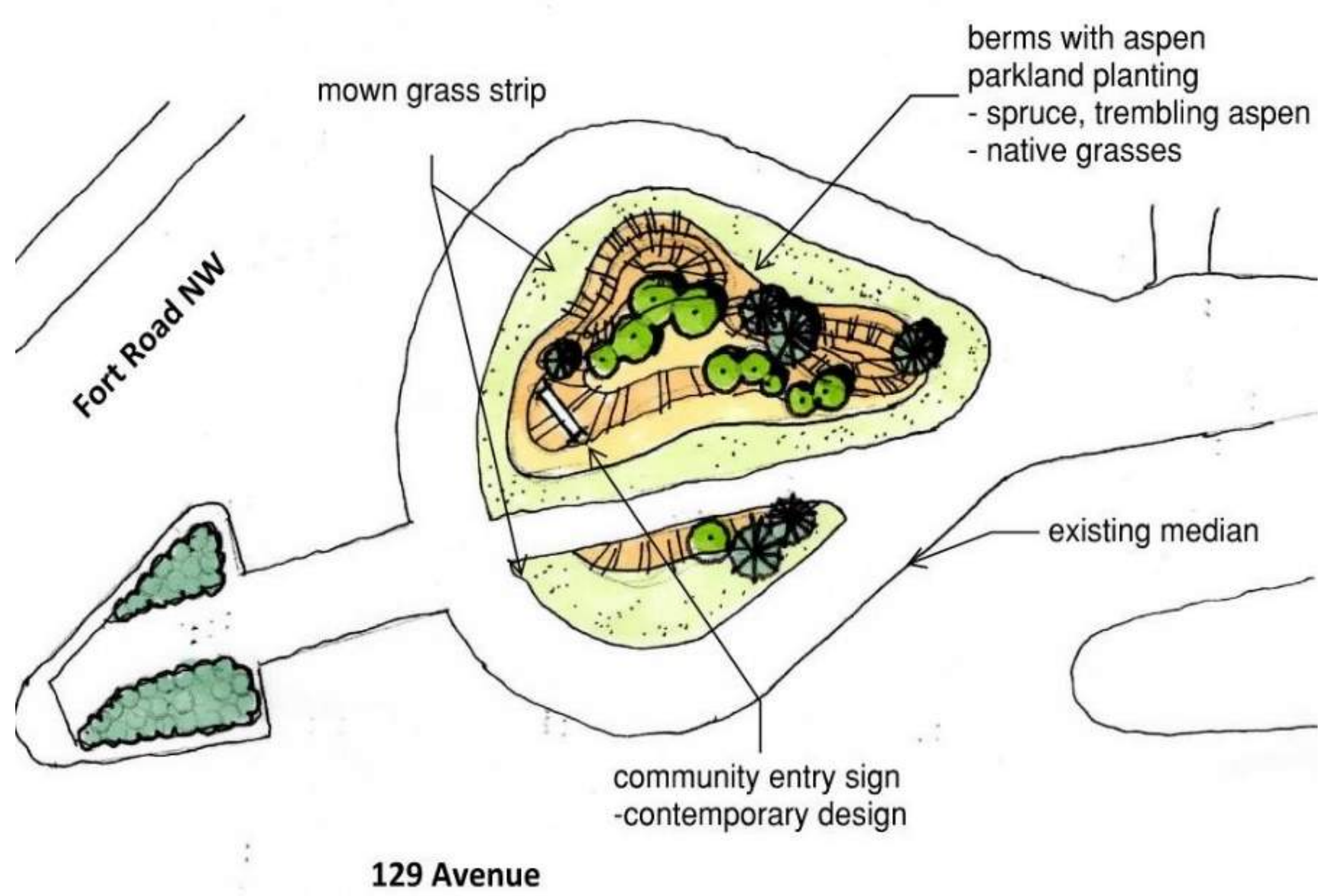
Option One: 66th Street (Combined Balwin and Belvedere Feature)



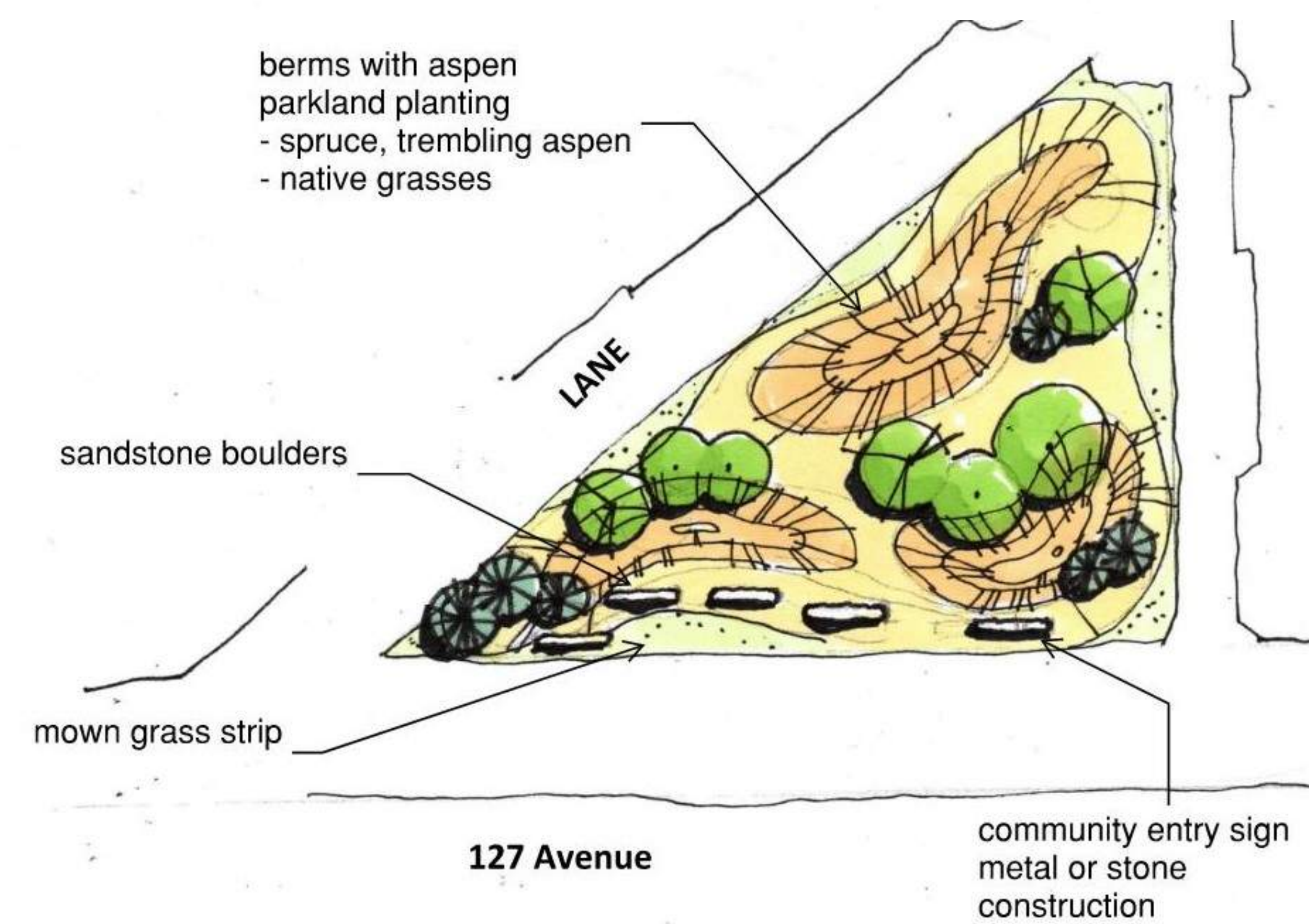
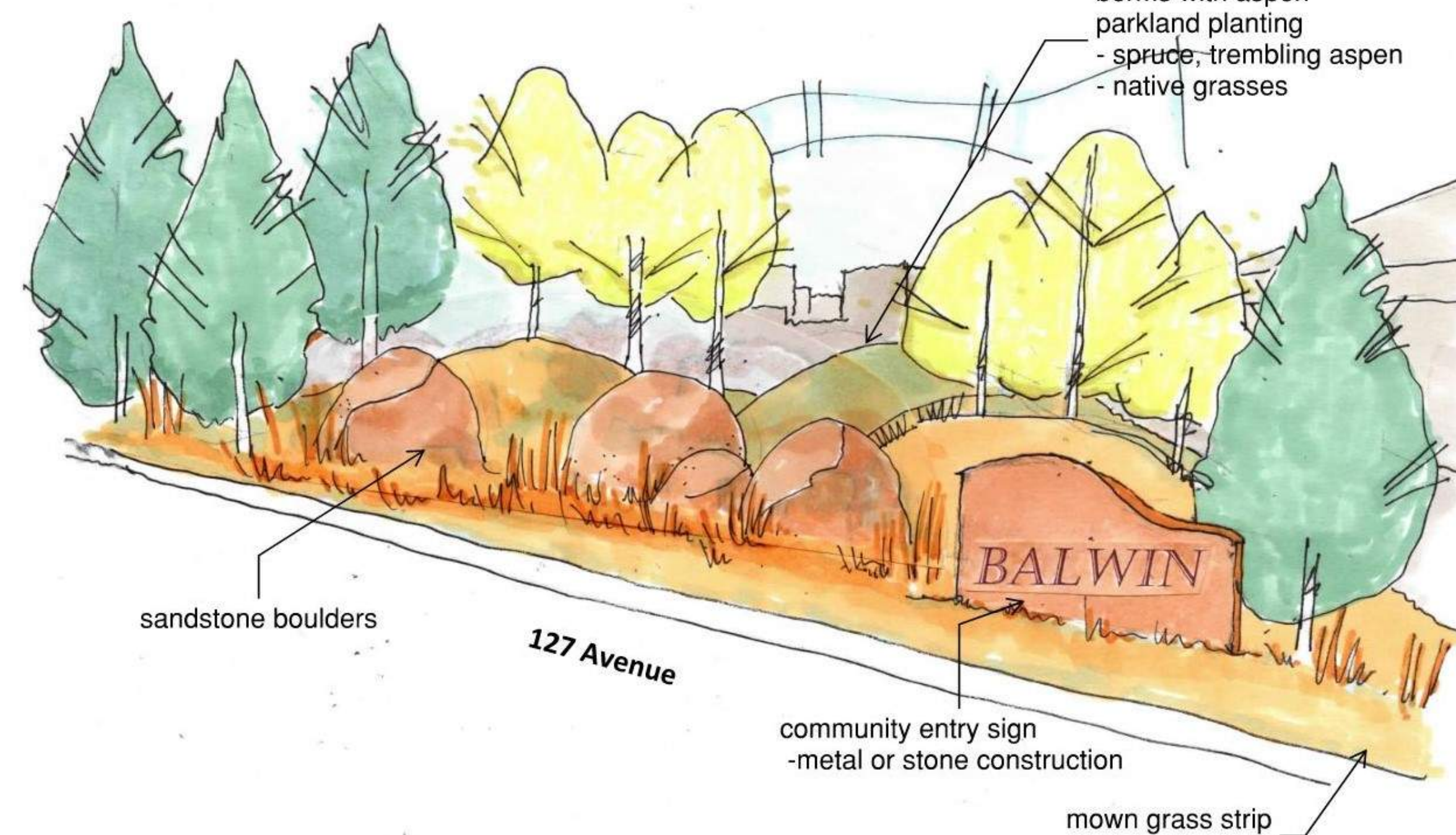
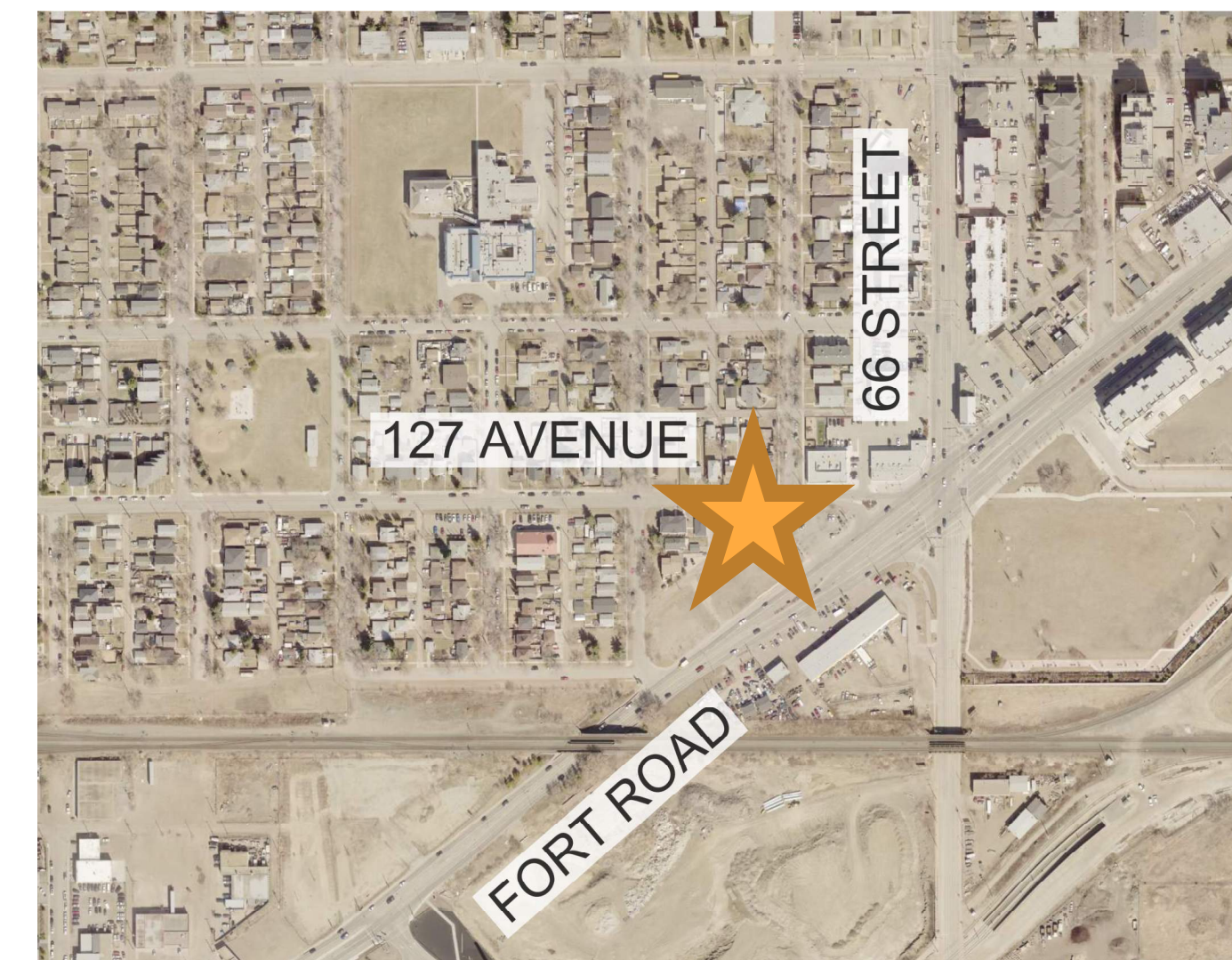
Entry Feature Design Options

Option Two: 127th and 129th Avenues (Separate Balwin and Belvedere Feature)

129 Avenue / Fort Road
(Belvedere Transit Centre)



127 Avenue / 67 Street
(Existing Open Space)



Temporary Traffic Calming Examples



Canmore Curb:

Precast concrete and rubber islands typically located in the middle the road to improve safety for pedestrians. They are currently used in Calgary and Canmore.



Traffic Calming Curbs:

Oval-shaped precast slabs of concrete typically located along curb edge of a roadway to narrow traffic lanes to slow vehicles and outline parking areas. They are currently used in Edmonton, St. Albert and Calgary.



Mini Barriers:

These are used to narrow roadways, guide traffic, and separate road users. They can also be painted to add visual interest to the area.

Permanent Traffic Calming Examples



Curb Extensions and Bulb Outs:

Narrowing of the road helps to define parking areas, shorten pedestrian crossings, and slow traffic. This is done by constructing new permanent curbs near intersections, accesses, or driveways to shorten pedestrian crossings and slow traffic.



Raised and Tabled Intersections:

A raised intersection raises the roadway through the intersection to near sidewalk height, forcing vehicles to slow down; it acts like a giant speed hump.



Raised Crosswalks:

A raised crosswalk raises the roadway through the crosswalk to near sidewalk height, forcing vehicles to slow down due to the elevation difference; it acts like a speed hump.

Next Steps

- Finalization of Concept Design based on feedback
- Preliminary Design (late 2023)
- Detailed Design (early 2024)
- Construction: 2024 / 2025 (*TBD*)

Learn more at
edmonton.ca/BalwinBelvedereTransportation

Edmonton