

Construction Notice – Update on Full Closure of 12 Avenue East

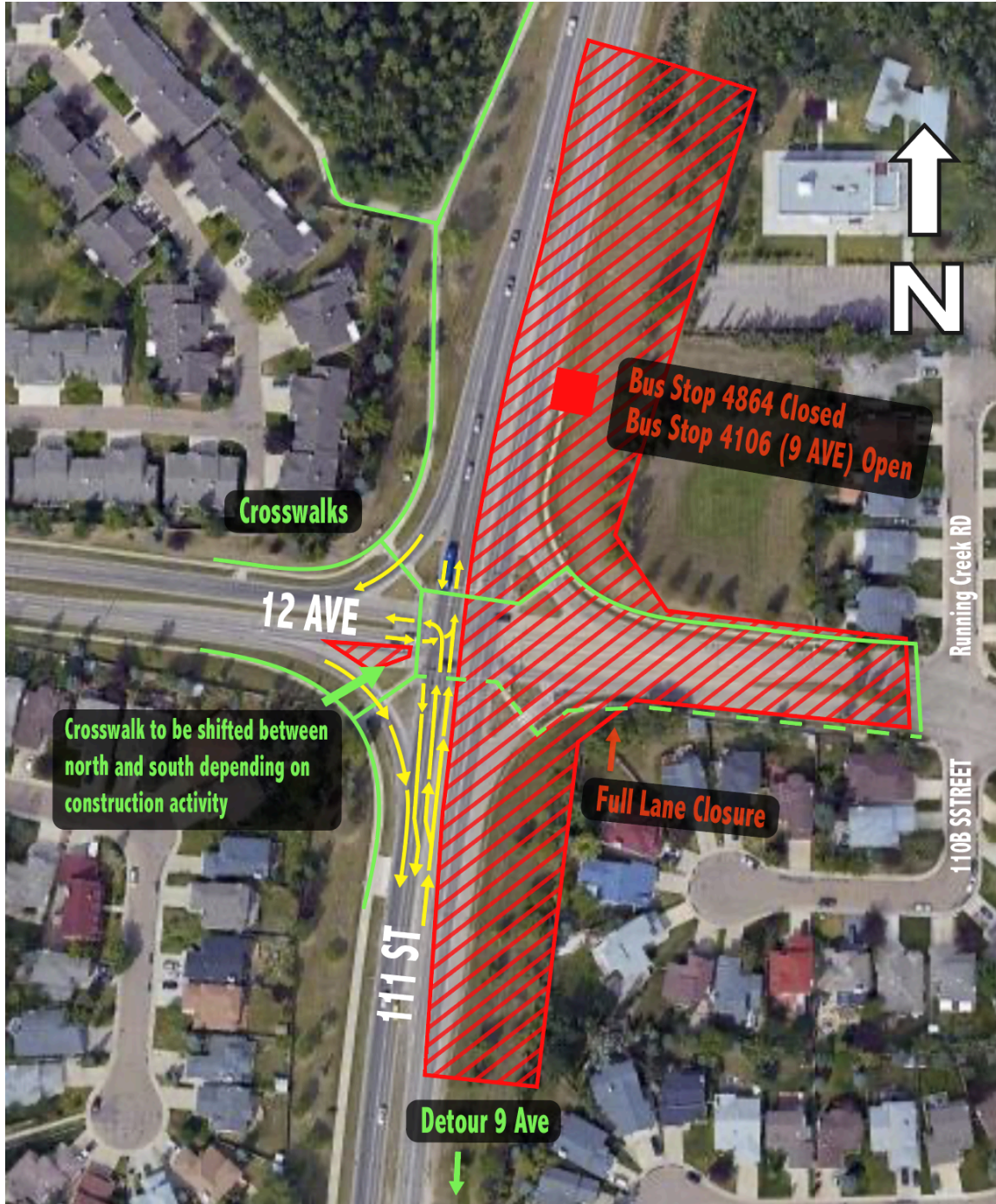
In June, the City of Edmonton shared a [construction notice](#) outlining the full closure of 12 Avenue east of 111 Street, with a planned reopening in late July.

While the City of Edmonton and Leducor both strive to share accurate timelines, in some instances weather and other factors cause delays. Due to ongoing rainy weather and paving completion timelines, the new anticipated reopening of 12 Avenue is the **beginning of September**.

We apologize for the inconvenience this may have caused, and thank residents and drivers for their patience during this time. To stay up-to-date on the Capital Line South LRT Extension, sign up for emailed notices [here](#).

Please refer to the map below for details about the current closure.

Map 1: Lane reductions on 111 Street near 12 Avenue and full closure of 12 Avenue east



What to Expect

Traffic Impacts

- Motorists are unable to travel in or out of 111 Street via 12 Avenue east, and are detoured to 9 Avenue.
- Bus stop 4864 is temporarily closed during this period. Bus stop 4106 (9 Avenue)

remains open.

Pedestrian Detour

- Pedestrians and cyclists travelling north-south can use the crosswalk on the west side of 111 Street.
- East-west crosswalks will alternate closures, ensuring one remains open at all times, with proper detour signage to ensure safety around the work zone.

Other Impacts

- The speed limit on 111 Street approaching the work zones is reduced to 40 km/h in both directions.
- Efforts are being made to minimize noise, vibration and dust. Mitigation measures are implemented to monitor and reduce these impacts.

For More Information

City of Edmonton (general project inquiries)

Visit: edmonton.ca/capitalsw

Email: lrtprojects@edmonton.ca

Call: LRT Projects Information Centre at 780-496-4874 (voicemail)

Ledcor Group of Companies (construction-specific inquiries)

Email: capitallinesouth@ledcor.com

Call: Capital Line South public inquiry line at 780-540-7013 (voicemail)